

Nirvana - Bambi slaughter

♩ = 97,200150

WinJammer Demo

WinJammer Demo

WinJammer Demo

3

WinJammer Demo

WinJammer Demo

WinJammer Demo

5

WinJammer Demo

WinJammer Demo

WinJammer Demo

7

WinJammer Demo

WinJammer Demo

WinJammer Demo

9

WinJammer Demo

WinJammer Demo

WinJammer Demo

This system contains measures 9 and 10. The top staff (treble clef) shows a melodic line starting with a quarter note, followed by a half note with a sharp sign, and then a quarter note with a slash and a vertical line, indicating a measure rest. The middle staff (soprano clef) features a continuous eighth-note accompaniment. The bottom staff (bass clef) has a rhythmic pattern of eighth notes, including a half note with a sharp sign.

11

WinJammer Demo

WinJammer Demo

WinJammer Demo

This system contains measures 11 and 12. The top staff (treble clef) shows a melodic line starting with a quarter note, followed by a half note with a sharp sign, and then a quarter note with a slash and a vertical line, indicating a measure rest. The middle staff (soprano clef) features a continuous eighth-note accompaniment. The bottom staff (bass clef) has a rhythmic pattern of eighth notes, including a half note with a sharp sign.

13

WinJammer Demo

WinJammer Demo

WinJammer Demo

This system contains measures 13 and 14. The top staff (treble clef) shows a melodic line starting with a quarter note, followed by a half note with a sharp sign, and then a quarter note with a slash and a vertical line, indicating a measure rest. The middle staff (soprano clef) features a continuous eighth-note accompaniment. The bottom staff (bass clef) has a rhythmic pattern of eighth notes, including a half note with a sharp sign.

15

WinJammer Demo

WinJammer Demo

WinJammer Demo

This system contains measures 15 and 16. The top staff (treble clef) shows a melodic line starting with a quarter note, followed by a half note with a sharp sign, and then a quarter note with a slash and a vertical line, indicating a measure rest. The middle staff (soprano clef) features a continuous eighth-note accompaniment. The bottom staff (bass clef) has a rhythmic pattern of eighth notes, including a half note with a sharp sign.

17

WinJammer Demo

WinJammer Demo

WinJammer Demo

This system contains three staves of music for measures 17 and 18. The top staff is in treble clef and shows a melodic line starting with a half note, followed by quarter notes, and ending with a quarter rest. The middle staff is in alto clef and features a continuous eighth-note accompaniment. The bottom staff is in bass clef and also features a continuous eighth-note accompaniment.

19

WinJammer Demo

WinJammer Demo

WinJammer Demo

This system contains three staves of music for measures 19 and 20. The top staff is in treble clef and shows a melodic line starting with a half note, followed by quarter notes, and ending with a whole rest. The middle staff is in alto clef and features a continuous eighth-note accompaniment. The bottom staff is in bass clef and also features a continuous eighth-note accompaniment.

21

WinJammer Demo

WinJammer Demo

WinJammer Demo

This system contains three staves of music for measures 21 and 22. The top staff is in treble clef and shows a melodic line starting with a half note, followed by a quarter note with a sharp sign, and ending with a quarter note and a quarter rest. The middle staff is in alto clef and features a continuous eighth-note accompaniment. The bottom staff is in bass clef and also features a continuous eighth-note accompaniment.

23

WinJammer Demo

WinJammer Demo

WinJammer Demo

This system contains three staves of music for measures 23 and 24. The top staff is in treble clef and shows a melodic line starting with a half note, followed by a quarter note with a sharp sign, and ending with a quarter note and a quarter rest. The middle staff is in alto clef and features a continuous eighth-note accompaniment. The bottom staff is in bass clef and also features a continuous eighth-note accompaniment.

25

WinJammer Demo

WinJammer Demo

WinJammer Demo

This system contains three staves of music for measures 25 and 26. The top staff is in treble clef and features a melody with a dotted quarter note followed by an eighth note, then a half note, and finally a quarter note with a fermata. The middle staff is in alto clef and consists of a continuous eighth-note accompaniment. The bottom staff is in bass clef and also features a continuous eighth-note accompaniment.

27

WinJammer Demo

WinJammer Demo

WinJammer Demo

This system contains three staves of music for measures 27 and 28. The top staff is in treble clef and features a melody with a dotted quarter note followed by an eighth note, then a half note, and finally a quarter note with a fermata. The middle staff is in alto clef and consists of a continuous eighth-note accompaniment. The bottom staff is in bass clef and also features a continuous eighth-note accompaniment.

29

WinJammer Demo

WinJammer Demo

WinJammer Demo

This system contains three staves of music for measures 29 and 30. The top staff is in treble clef and features a melody with a dotted quarter note followed by an eighth note, then a half note, and finally a quarter note with a fermata. The middle staff is in alto clef and consists of a continuous eighth-note accompaniment. The bottom staff is in bass clef and also features a continuous eighth-note accompaniment.

31

WinJammer Demo

WinJammer Demo

WinJammer Demo

This system contains three staves of music for measures 31 and 32. The top staff is in treble clef and features a melody with a dotted quarter note followed by an eighth note, then a half note, and finally a quarter note. The middle staff is in alto clef and consists of a continuous eighth-note accompaniment. The bottom staff is in bass clef and also features a continuous eighth-note accompaniment.

33

WinJammer Demo



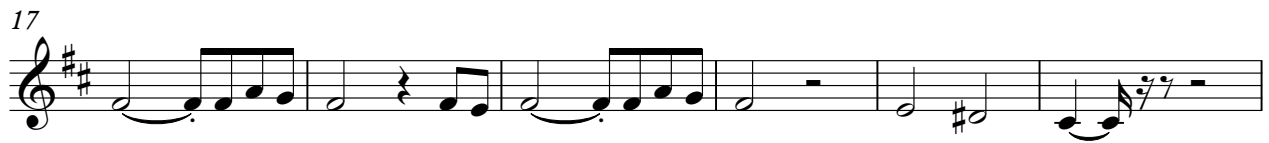
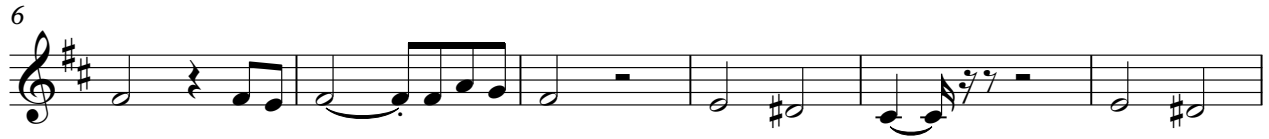
WinJammer Demo



WinJammer Demo



♩ = 97,200150



♩ = 97,200150



3



5



7



9



11



13



15



17



19



V.S.

♩ = 97,200150



