

Blink 182 - Apple Shampoo

♩ = 208,000381

Drums - Scott

Guitar - Tom

Bass - Mark

Vocals - Mark

4

Guitar - Tom

Bass - Mark

Vocals - Mark

7

Drums - Scott

Guitar - Tom

Bass - Mark

Vocals - Mark

♩ = 212,000656

9

Drums - Scott

Guitar - Tom

Bass - Mark

Vocals - Mark

♩ = 212,000656

12

Drums - Scott

Guitar - Tom

Bass - Mark

Vocals - Mark

15 ♪ = 208,000381

Drums - Scott

Guitar - Tom

Bass - Mark

Vocals - Mark

18

Guitar - Tom

Bass - Mark

Vocals - Mark

21

Guitar - Tom

Bass - Mark

Vocals - Mark

24 $\text{♩} = 212,000656$

Drums - Scott

Guitar - Tom

Bass - Mark

Vocals - Mark

$\text{♩} = 212,000656$

26

Bass - Mark

Vocals - Mark

29 $\text{♩} = 212,000656$

Drums - Scott

Guitar - Tom

Bass - Mark

Vocals - Mark

$\text{♩} = 212,000656$

32 $\text{♩} = 204,000443$ 5

Drums - Scott

Guitar - Tom

Bass - Mark

Vocals - Mark

35

Drums - Scott

Guitar - Tom

Bass - Mark

38

Drums - Scott

Guitar - Tom

Bass - Mark

40

Drums - Scott

Guitar - Tom

Bass - Mark

Vocals - Mark

42

Drums - Scott

Guitar - Tom

Bass - Mark

Vocals - Mark

44

Drums - Scott

Guitar - Tom

Bass - Mark

Vocals - Mark

46

Drums - Scott

Guitar - Tom

Bass - Mark

Vocals - Mark

48

Drums - Scott

Guitar - Tom

Bass - Mark

Vocals - Mark

50

Drums - Scott

Guitar - Tom

Bass - Mark

53

Drums - Scott

Guitar - Tom

Bass - Mark

This system contains measures 53, 54, and 55. The drum part (Scott) features a consistent pattern of eighth notes on the snare and bass drum. The guitar part (Tom) consists of chords and single notes, with a double bar line and repeat sign at the start of measure 53. The bass part (Mark) provides a steady eighth-note accompaniment.

56

Drums - Scott

Guitar - Tom

Bass - Mark

Vocals - Mark

This system contains measures 56 and 57. The drum part (Scott) continues with the established pattern. The guitar part (Tom) shows some variation in chord voicings. The bass part (Mark) maintains the eighth-note line. The vocal part (Mark) begins in measure 57 with a series of eighth notes.

58

Drums - Scott

Guitar - Tom

Bass - Mark

Vocals - Mark

This system contains measures 58 and 59. The drum part (Scott) remains consistent. The guitar part (Tom) continues with its chordal accompaniment. The bass part (Mark) stays on the eighth-note line. The vocal part (Mark) continues with a melodic line of eighth notes.

60

Drums - Scott

Guitar - Tom

Bass - Mark

Vocals - Mark

62

Drums - Scott

Guitar - Tom

Bass - Mark

Vocals - Mark

64

Drums - Scott

Guitar - Tom

Bass - Mark

Vocals - Mark

66

Drums - Scott

Guitar - Tom

Bass - Mark

Vocals - Mark

69

Backup vocals - Tom

Drums - Scott

Guitar - Tom

Bass - Mark

Vocals - Mark

72 11

Drums - Scott

Guitar - Tom

Bass - Mark

Vocals - Mark

74

Backup vocals - Tom

Drums - Scott

Guitar - Tom

Bass - Mark

Vocals - Mark

76

Backup vocals - Tom

Drums - Scott

Guitar - Tom

Bass - Mark

Vocals - Mark

Detailed description of measures 76-77: This system contains five staves. The top staff, 'Backup vocals - Tom', has a whole rest in measure 76 and a quarter note in measure 77. The second staff, 'Drums - Scott', shows a drum set icon and a rhythmic pattern of eighth notes with 'x' marks above them, indicating cymbal hits. The third staff, 'Guitar - Tom', features a series of eighth-note chords. The fourth staff, 'Bass - Mark', has a simple eighth-note line. The bottom staff, 'Vocals - Mark', has a whole rest in measure 76 and a quarter note in measure 77.

78

Backup vocals - Tom

Drums - Scott

Guitar - Tom

Bass - Mark

Vocals - Mark

Detailed description of measures 78-79: This system contains five staves. The top staff, 'Backup vocals - Tom', has a melodic line starting with a quarter note, followed by a quarter rest, and then eighth notes. The second staff, 'Drums - Scott', continues the drum pattern. The third staff, 'Guitar - Tom', continues the eighth-note chord progression. The fourth staff, 'Bass - Mark', continues the eighth-note line. The bottom staff, 'Vocals - Mark', has a melodic line similar to the backup vocals, starting with a quarter note, a quarter rest, and eighth notes.

80

Backup vocals - Tom

Drums - Scott

Guitar - Tom

Bass - Mark

Vocals - Mark

Detailed description: This system covers measures 80 and 81. Backup vocals (Tom) and Vocals (Mark) are written in treble clef. Backup vocals start with a quarter note, followed by a half note, and then a whole note. Vocals start with a quarter note, followed by a half note, and then a whole note. Drums (Scott) is in drum notation, showing a consistent pattern of eighth notes with some accents. Guitar (Tom) and Bass (Mark) are in a grand staff. Guitar plays a series of chords, and Bass plays a simple eighth-note line.

82

Backup vocals - Tom

Drums - Scott

Guitar - Tom

Bass - Mark

Vocals - Mark

Detailed description: This system covers measures 82 and 83. Backup vocals (Tom) and Vocals (Mark) are written in treble clef. Backup vocals start with a quarter note, followed by a half note, and then a whole note. Vocals start with a quarter note, followed by a half note, and then a whole note. Drums (Scott) is in drum notation, showing a consistent pattern of eighth notes with some accents. Guitar (Tom) and Bass (Mark) are in a grand staff. Guitar plays a series of chords, and Bass plays a simple eighth-note line.

84

Backup vocals - Tom

Drums - Scott

Guitar - Tom

Bass - Mark

Vocals - Mark

86

Backup vocals - Tom

Drums - Scott

Guitar - Tom

Bass - Mark

Vocals - Mark

88

Backup vocals - Tom

Drums - Scott

Guitar - Tom

Bass - Mark

Vocals - Mark

90

Drums - Scott

Guitar - Tom

Bass - Mark

93

Drums - Scott

Guitar - Tom

Bass - Mark

96

Drums - Scott

Guitar - Tom

Bass - Mark

98

Backup vocals - Tom

Drums - Scott

Guitar - Tom

Bass - Mark

Vocals - Mark

100

Backup vocals - Tom

Drums - Scott

Guitar - Tom

Bass - Mark

Vocals - Mark

102

Backup vocals - Tom

Drums - Scott

Guitar - Tom

Bass - Mark

Vocals - Mark

104

Backup vocals - Tom

Drums - Scott

Guitar - Tom

Bass - Mark

Vocals - Mark

106

Drums - Scott

Guitar - Tom

Bass - Mark

Vocals - Mark

109

Drums - Scott

Guitar - Tom

Bass - Mark

Vocals - Mark

112

Drums - Scott

Guitar - Tom

Bass - Mark

Vocals - Mark

114

Drums - Scott

Guitar - Tom

Bass - Mark

Vocals - Mark

116

Drums - Scott

Guitar - Tom

Bass - Mark

Vocals - Mark

118

Drums - Scott

Guitar - Tom

Bass - Mark

Vocals - Mark

120

Drums - Scott

Guitar - Tom

Bass - Mark

Vocals - Mark

122

Drums - Scott

Guitar - Tom

Bass - Mark

Vocals - Mark

This system contains measures 122 and 123. The drum part features a consistent pattern of cymbals and snare hits. The guitar part consists of a series of chords, some with a double bar line and an asterisk above them. The bass part is a simple eighth-note line. The vocal part has a melodic line with some phrasing.

124

Backup vocals - Tom

Drums - Scott

Guitar - Tom

Bass - Mark

Vocals - Mark

This system contains measures 124 and 125. Backup vocals (Tom) enter in measure 124 with a melodic line. The drum, guitar, and bass parts continue from the previous system. The vocal part (Mark) continues with a melodic line.

126

Backup vocals - Tom

Drums - Scott

Guitar - Tom

Bass - Mark

Vocals - Mark

128

Drums - Scott

Guitar - Tom

Bass - Mark

Vocals - Mark

♩ = 199,000351

131

Drums - Scott

Guitar - Tom

Bass - Mark

134

Drums - Scott

Guitar - Tom

Bass - Mark

Vocals - Mark

136

♩ = 204,000443

Drums - Scott

Guitar - Tom

Bass - Mark

Vocals - Mark

138

Drums - Scott

Guitar - Tom

Bass - Mark

141

Drums - Scott

Guitar - Tom

Bass - Mark

This musical score covers measures 141 to 143. The drum part (Scott) features a steady eighth-note pattern. The guitar part (Tom) consists of chords in the treble clef. The bass part (Mark) is a simple eighth-note line in the bass clef.

144

Drums - Scott

Guitar - Tom

Bass - Mark

This musical score covers measures 144 to 145. The drum part (Scott) features a steady eighth-note pattern. The guitar part (Tom) consists of chords in the treble clef. The bass part (Mark) is a simple eighth-note line in the bass clef.

Blink 182 - Apple Shampoo

Drums - Scott

♩ = 208,000381

♩ = 212,000656

6

3

13

♩ = 208,000381

6

♩ = 212,000656

24

3

31

♩ = 204,000443

35

39

42

46

49

53

V.S.

56

59

63

66

70

74

78

81

85

88

91

95

98

102

105

109

113

117

120

123

V.S.

4

Drums - Scott

127

♩ = 199,000351

3

134

♩ = 204,000443

138

142

144

♩ = 208,000381

9 ♩ = 212,000656

17 ♩ = 208,000381 ♩ = 212,000656

26 ♩ = 204,000443

34

39

43

46

49

54

58



61



64



68



72



76



80



84



88



92



97

100

103

106

110

114

118

122

126

♩ = 199,000351

131

V.S.

4

$\text{♩} = 204,000443$
137

Guitar - Tom

Musical notation for guitar tom, measures 137-140. The notation is on a single staff with a treble clef. It consists of four measures of music. The first measure contains three chords: a triad of G4, B4, and D5, followed by a dyad of G4 and B4, and then a dyad of G4 and D5. The second measure contains a triad of G4, B4, and D5, followed by a dyad of G4 and B4, and then a dyad of G4 and D5. The third measure contains a triad of G4, B4, and D5, followed by a dyad of G4 and B4, and then a dyad of G4 and D5. The fourth measure contains a triad of G4, B4, and D5, followed by a dyad of G4 and B4, and then a dyad of G4 and D5.

141

Musical notation for guitar tom, measures 141-144. The notation is on a single staff with a treble clef. It consists of four measures of music. The first measure contains three chords: a triad of G4, B4, and D5, followed by a dyad of G4 and B4, and then a dyad of G4 and D5. The second measure contains a triad of G4, B4, and D5, followed by a dyad of G4 and B4, and then a dyad of G4 and D5. The third measure contains a triad of G4, B4, and D5, followed by a dyad of G4 and B4, and then a dyad of G4 and D5. The fourth measure contains a triad of G4, B4, and D5, followed by a dyad of G4 and B4, and then a dyad of G4 and D5.

♩ = 208,000381



5



9 ♩ = 212,000656



13

♩ = 208,000381



18



22

♩ = 212,000656



26



30

♩ = 204,000443



35



40



85



89



93



97



101



105



109



113



117



121



V.S.

125



129 ♩ = 199,000351



133



137 ♩ = 204,000443



141



♪ = 208,000381

6

♪ = 212,000656

11

16

♪ = 208,000381

21

♪ = 212,000656

26

31

♪ = 204,000443

6

41

46

7

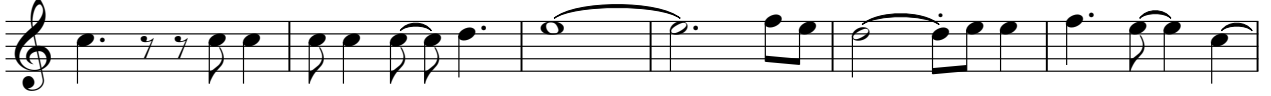
57



62



67



73



79



84



89



102



108



114



119



124

♩ = 199,000351



130

4



136

♩ = 204,000443

8

