

Nirvana - Opinion

♩ = 145,000031

KDC-Guitar

Measures 1-4 of the guitar part. The key signature has one flat (Bb) and the time signature is 4/4. The music consists of a series of chords and single notes, including a prominent Bb chord and a melodic line with eighth notes.

KDC-Guitar

Measures 5-8 of the guitar part. The key signature changes to two sharps (F# and C#). The music continues with similar chordal and melodic patterns.

KDC-Vocals

Measures 1-4 of the vocal part. The melody begins in measure 3 with a series of eighth notes and a half note.

KDC-Guitar

Measures 9-12 of the guitar part. The key signature returns to one flat (Bb). The music features a mix of chords and melodic lines.

KDC-Vocals

Measures 9-12 of the vocal part. The melody continues with eighth notes and a half note.

KDC-Guitar

Measures 13-16 of the guitar part. The key signature changes to two sharps (F# and C#). The music continues with similar chordal and melodic patterns.

KDC-Vocals

Measures 13-16 of the vocal part. The melody continues with eighth notes and a half note.

KDC-Guitar

Measures 17-20 of the guitar part. The key signature returns to one flat (Bb). The music features a mix of chords and melodic lines.

KDC-Vocals

Measures 17-20 of the vocal part. The melody continues with eighth notes and a half note.

KDC-Guitar

Measures 21-24 of the guitar part. The key signature returns to one flat (Bb). The music features a mix of chords and melodic lines.

KDC-Vocals

Measures 21-24 of the vocal part. The melody continues with eighth notes and a half note.

19

KDC-Guitar

KDC-Vocals

Detailed description: This system contains measures 19 and 20. The guitar part (top staff) is in treble clef with a key signature of two sharps (F# and C#). It features a complex chordal texture with many accidentals and a melodic line. The vocal part (bottom staff) is in treble clef with a key signature of one flat (Bb). It consists of a melodic line with some rests and a final note on a half note.

21

KDC-Guitar

KDC-Vocals

Detailed description: This system contains measures 21 and 22. The guitar part continues with similar complex chordal textures and melodic lines. The vocal part continues with a melodic line, including a quarter rest in measure 22.

23

KDC-Guitar

KDC-Vocals

Detailed description: This system contains measures 23 and 24. The guitar part maintains its complex texture. The vocal part continues with a melodic line, including a quarter rest in measure 24.

25

KDC-Guitar

KDC-Vocals

Detailed description: This system contains measures 25 and 26. The guitar part continues with complex textures. The vocal part continues with a melodic line, including a quarter rest in measure 26.

27

KDC-Guitar

KDC-Vocals

Detailed description: This system contains measures 27 and 28. The guitar part continues with complex textures. The vocal part continues with a melodic line, including a quarter rest in measure 28.

30

KDC-Guitar

KDC-Vocals

Detailed description: This system contains measures 30 and 31. The guitar part continues with complex textures. The vocal part continues with a melodic line, including a quarter rest in measure 31.

33

KDC-Guitar

KDC-Vocals

36

KDC-Guitar

KDC-Vocals

38

KDC-Guitar

KDC-Vocals

41

KDC-Guitar

KDC-Vocals

43

KDC-Guitar

KDC-Vocals

46

KDC-Guitar

KDC-Vocals

49

KDC-Guitar

KDC-Vocals

This system contains measures 49, 50, and 51. The guitar part (KDC-Guitar) is written in a key with three sharps (F#, C#, G#) and a common time signature. It features a complex chord progression with many accidentals and a melodic line. The vocal part (KDC-Vocals) consists of a few notes with rests.

52

KDC-Guitar

KDC-Vocals

This system contains measures 52 and 53. The guitar part (KDC-Guitar) continues with complex chords and a melodic line. The vocal part (KDC-Vocals) has a long note followed by rests.

54

KDC-Guitar

KDC-Vocals

This system contains measures 54 and 55. The guitar part (KDC-Guitar) ends with a final chord. The vocal part (KDC-Vocals) has a long note followed by rests.

Nirvana - Opinion

KDC-Guitar

♩ = 145,000031

5

9

12

16

20

23

26

30

34

V.S.

37

Musical notation for measures 37-39, featuring a treble clef and a key signature of two sharps (F# and C#). The notation includes chords and eighth notes.

40

Musical notation for measures 40-42, featuring a treble clef and a key signature of one flat (Bb). The notation includes chords and eighth notes.

43

Musical notation for measures 43-45, featuring a treble clef and a key signature of two sharps (F# and C#). The notation includes chords and eighth notes.

47

Musical notation for measures 47-49, featuring a treble clef and a key signature of two sharps (F# and C#). The notation includes chords and eighth notes.

51

Musical notation for measures 51-53, featuring a treble clef and a key signature of two sharps (F# and C#). The notation includes chords and eighth notes.

54

Musical notation for measures 54-56, featuring a treble clef and a key signature of one flat (Bb). The notation includes chords and eighth notes.

♩ = 145,000031

3

8

12

16

21

25

29

33

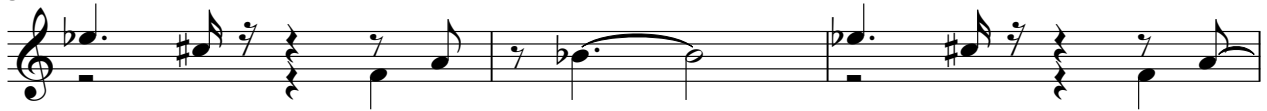
38

42

46



51



54

