

Onbekende Klassieke SongsDiversen - BEQ53E

♩ = 50,000000

English Horn

Soprano Sax

Trombone

Tuba

Detailed description: This block contains the first three measures of a musical score. The tempo is marked as ♩ = 50,000000. The score is for four instruments: English Horn (treble clef), Soprano Sax (treble clef), Trombone (bass clef), and Tuba (bass clef). The time signature is 4/4. The key signature has one sharp (F#). The English Horn part starts with a quarter rest followed by a quarter note G4, then eighth notes A4, B4, C5, and D5. The Soprano Sax part starts with a quarter note G#4, followed by eighth notes A4, B4, C5, and D5. The Trombone part starts with a quarter rest, followed by eighth notes G3, A3, B3, and C4. The Tuba part starts with a quarter rest, followed by eighth notes G2, A2, B2, and C3.

4

English Horn

Soprano Sax

Trombone

Tuba

Detailed description: This block contains measures 4, 5, and 6 of the musical score. The measure number '4' is written above the first staff. The English Horn part continues with eighth notes D5, C5, B4, and A4. The Soprano Sax part continues with eighth notes D5, C5, B4, and A4. The Trombone part continues with eighth notes G3, A3, B3, and C4. The Tuba part continues with eighth notes G2, A2, B2, and C3.

7

English Horn

Soprano Sax

Trombone

Tuba

This system of music covers measures 7, 8, and 9. The English Horn part (top staff) begins with a melodic line in measure 7, followed by a sustained note in measure 8 and a melodic phrase in measure 9. The Soprano Sax part (second staff) plays a rhythmic accompaniment with eighth and sixteenth notes. The Trombone part (third staff) features a melodic line with some rests. The Tuba part (bottom staff) provides a bass line with eighth and sixteenth notes.

10

English Horn

Soprano Sax

Trombone

Tuba

This system of music covers measures 10, 11, and 12. The English Horn part (top staff) has a melodic line with some rests. The Soprano Sax part (second staff) continues with a rhythmic accompaniment. The Trombone part (third staff) has a melodic line with some rests. The Tuba part (bottom staff) provides a bass line with eighth and sixteenth notes.

13

English Horn

Soprano Sax

Trombone

Tuba

This system of music covers measures 13, 14, and 15. The English Horn part (top staff) has a melodic line with some rests. The Soprano Sax part (second staff) continues with a rhythmic accompaniment. The Trombone part (third staff) has a melodic line with some rests. The Tuba part (bottom staff) provides a bass line with eighth and sixteenth notes.

♩ = 29,000008

15

English Horn

Soprano Sax

Trombone

Tuba

English Horn

Onbekende Klassieke SongsDiversen - BEQ53E

♩ = 50,000000



5



9



13



15

♩ = 29,000008



Soprano Sax

Onbekende Klassieke SongsDiversen - BEQ53E

♩ = 50,000000

The first staff of music is in treble clef with a key signature of one sharp (F#) and a 4/4 time signature. It begins with a quarter rest in the first measure, followed by a quarter note G4, an eighth note A4, a quarter note B4, and a quarter note C5. The second measure contains a quarter note D5, an eighth note E5, a quarter note F#5, and a quarter note G5. The third measure contains a quarter note A5, an eighth note B5, a quarter note C6, and a quarter note B5. The fourth measure contains a quarter note A5, an eighth note G5, a quarter note F#5, and a quarter note E5.

5

The second staff of music continues from the first. Measure 5: quarter note D5, eighth note E5, quarter note F#5, quarter note G5. Measure 6: quarter note A5, eighth note B5, quarter note C6, quarter note B5. Measure 7: quarter note A5, eighth note G5, quarter note F#5, quarter note E5. Measure 8: quarter note D5, quarter note E5, quarter note F#5, quarter note G5.

9

The third staff of music continues from the second. Measure 9: quarter note A5, eighth note B5, quarter note C6, quarter note B5. Measure 10: quarter note A5, eighth note G5, quarter note F#5, quarter note E5. Measure 11: quarter note D5, quarter note E5, quarter note F#5, quarter note G5. Measure 12: quarter note A5, eighth note B5, quarter note C6, quarter note B5.

13

♩ = 29,000008

The fourth staff of music continues from the third. Measure 13: quarter note D5, quarter note E5, quarter note F#5, quarter note G5. Measure 14: quarter note A5, eighth note B5, quarter note C6, quarter note B5. Measure 15: quarter note A5, eighth note G5, quarter note F#5, quarter note E5. Measure 16: quarter note D5, quarter note E5, quarter note F#5, quarter note G5, ending with a double bar line.



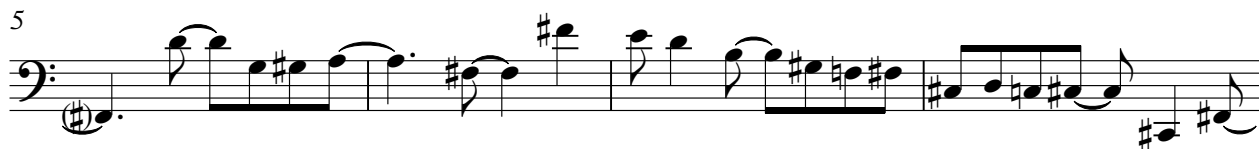
Tuba

Onbekende Klassieke SongsDiversen - BEQ53E

♩ = 50,000000



5



9



13

♩ = 29,000008

