

Onbekende Klassieke SongsDiversen - GROSSO3

$\text{♩} = 120,000000$

Sop 1

Sop 2

6

Sop 1

Sop 2

9

Sop 1

Sop 2

12

Sop 1

Sop 2

15

Sop 1

Sop 2

18

Bass

Sop 1

Sop 2

Tenor

21

Bass

Tenor

24

Bass

Tenor

27

Bass

Tenor

31 $\text{♩} = 50,000000$

Bass

Sop 1

Sop 2

Tenor

35 $\text{♩} = 120,000000$

Bass

39

Bass

Tenor

42

Bass

Sop 2

Tenor

45

Bass Sop 1 Sop 2 Tenor

This system contains measures 45, 46, and 47. The Bass part features a complex rhythmic pattern with eighth and sixteenth notes, including a triplet in measure 47. Sopranos 1 and 2 have sparse vocal lines, with Sop 2 having a few notes in measures 45 and 46. The Tenor part has a steady eighth-note accompaniment.

48

Bass Sop 1 Sop 2 Tenor

This system contains measures 48, 49, and 50. The Bass part continues with eighth-note patterns and rests. Sopranos 1 and 2 have more active vocal lines, with Sop 2 featuring a melodic line. The Tenor part maintains its eighth-note accompaniment.

51

Bass Sop 1 Sop 2 Tenor

This system contains measures 51, 52, and 53. The Bass part has a sparse accompaniment with few notes. Sopranos 1 and 2 have very active vocal lines with many notes, including some triplets. The Tenor part continues with eighth-note accompaniment.

53

Bass

Sop 1

Sop 2

Tenor

This system contains measures 53, 54, and 55. The Bass line starts with a half note G2, followed by quarter notes A2, B2, and C3. Sop 1 has a half note G4, followed by quarter notes A4, B4, and C5. Sop 2 has a half note G4, followed by quarter notes A4, B4, and C5. Tenor has a half note G3, followed by quarter notes A3, B3, and C4. The key signature has one sharp (F#) and the time signature is 4/4.

56

Bass

Sop 1

Sop 2

Tenor

This system contains measures 56 and 57. The Bass line starts with a half note G2, followed by quarter notes A2, B2, and C3. Sop 1 has a half note G4, followed by quarter notes A4, B4, and C5. Sop 2 has a half note G4, followed by quarter notes A4, B4, and C5. Tenor has a half note G3, followed by quarter notes A3, B3, and C4. The key signature has one sharp (F#) and the time signature is 4/4.

58

Bass

Sop 1

Sop 2

Tenor

This system contains measures 58 and 59. The Bass line starts with a half note G2, followed by quarter notes A2, B2, and C3. Sop 1 has a half note G4, followed by quarter notes A4, B4, and C5. Sop 2 has a half note G4, followed by quarter notes A4, B4, and C5. Tenor has a half note G3, followed by quarter notes A3, B3, and C4. The key signature has one sharp (F#) and the time signature is 4/4.

60

Bass

Sop 1

Sop 2

Tenor

Detailed description: This system contains measures 60 and 61. The Bass part starts with a dotted quarter note, followed by eighth notes and a quarter note. Sop 1 has a melodic line with a slur over measures 60-61. Sop 2 has a melodic line with a slur over measures 60-61. Tenor has a melodic line with a slur over measures 60-61.

62

Bass

Sop 1

Sop 2

Tenor

Detailed description: This system contains measures 62, 63, and 64. The Bass part has a melodic line with a slur over measures 62-64. Sop 1 has a melodic line with a slur over measures 62-64. Sop 2 has a melodic line with a slur over measures 62-64. Tenor has a melodic line with a slur over measures 62-64.

65

Bass

Sop 1

Sop 2

Tenor

Detailed description: This system contains measures 65, 66, and 67. The Bass part has a melodic line with a slur over measures 65-67. Sop 1 has a melodic line with a slur over measures 65-67. Sop 2 has a melodic line with a slur over measures 65-67. Tenor has a melodic line with a slur over measures 65-67.

68

Bass

Sop 1

Sop 2

Tenor

Detailed description: This system contains measures 68 and 69. The Bass part features a continuous eighth-note line with a flat (b) in the second measure. Sopranos 1 and 2 have sparse notes, with Sop 1 having a long note in measure 69. The Tenor part has a steady eighth-note line with a flat (b) in measure 69.

70

Bass

Sop 1

Sop 2

Tenor

Detailed description: This system contains measures 70 and 71. The Bass part continues with eighth notes and a flat (b) in measure 71. Sopranos 1 and 2 have notes, with Sop 1 having a sharp (#) in measure 71. The Tenor part has a steady eighth-note line with a flat (b) in measure 71.

72

Bass

Sop 1

Sop 2

Tenor

Detailed description: This system contains measures 72 and 73. The Bass part has eighth notes with a flat (b) in measure 73. Sopranos 1 and 2 have notes, with Sop 1 having a sharp (#) in measure 73. The Tenor part has a steady eighth-note line with a flat (b) in measure 73.

74

Bass Sop 1 Sop 2 Tenor

This system contains measures 74 and 75. The Bass part features a rhythmic pattern of eighth notes in measure 74, followed by a rest and a quarter note in measure 75. Sopranos 1 and 2 have rests in measure 74 and enter in measure 75 with eighth-note patterns. The Tenor part has a half note in measure 74 and a quarter-note pattern in measure 75.

76

Bass Sop 1 Sop 2 Tenor

This system contains measures 76 and 77. The Bass part has a continuous eighth-note pattern. Sopranos 1 and 2 have eighth-note patterns with various accidentals. The Tenor part has a half note in measure 76 and a quarter note in measure 77.

78

Bass Sop 1 Sop 2 Tenor

This system contains measures 78, 79, and 80. The Bass part has eighth notes in measure 78, rests in measure 79, and eighth notes in measure 80. Sopranos 1 and 2 have quarter and eighth notes with accidentals. The Tenor part has quarter notes in measure 78, rests in measure 79, and eighth notes in measure 80.

81

Bass

Sop 1

Sop 2

Tenor

Detailed description: This system covers measures 81 and 82. The Bass part features a rhythmic eighth-note pattern in the first measure, followed by a melodic line in the second measure. Sopranos 1 and 2 have sparse notes, with Sop 2 having a rest in measure 81 and a melodic phrase in measure 82. The Tenor part has a rest in measure 81 and a melodic phrase in measure 82.

83

Bass

Sop 1

Sop 2

Detailed description: This system covers measures 83 and 84. The Bass part has a melodic line in measure 83 and a rest in measure 84. Sopranos 1 and 2 have melodic lines in measure 83, with Sop 1 having a rest in measure 84. Sop 2 has a melodic line in measure 83 and a rest in measure 84.

85

Bass

Sop 1

Sop 2

Detailed description: This system covers measures 85 and 86. The Bass part has a melodic line in measure 85 and a more complex melodic line in measure 86. Sopranos 1 and 2 have melodic lines in measure 85, with Sop 1 having a rest in measure 86. Sop 2 has a melodic line in measure 85 and a rest in measure 86.

87

Bass

Sop 1

Sop 2

Tenor

Detailed description: This system covers measures 87 and 88. The Bass part has a melodic line in measure 87 and a rest in measure 88. Sopranos 1 and 2 have melodic lines in measure 87, with Sop 1 having a rest in measure 88. Sop 2 has a melodic line in measure 87 and a rest in measure 88. The Tenor part has a melodic line in measure 87 and a rest in measure 88.

89

Bass

Sop 1

Sop 2

Tenor

Detailed description: This system covers measures 89 and 90. The Bass line features a long melodic line with a slur over both measures. Sopranos 1 and 2 have active melodic lines with slurs. The Tenor part is mostly rests with some rhythmic patterns.

91

Bass

Sop 1

Sop 2

Tenor

Detailed description: This system covers measures 91 and 92. The Bass line has a long melodic line with a slur. Sopranos 1 and 2 have active melodic lines. The Tenor part consists of a simple harmonic line.

93

Bass

Sop 1

Sop 2

Tenor

Detailed description: This system covers measures 93 and 94. The Bass line has a long melodic line with a slur. Sopranos 1 and 2 have active melodic lines. The Tenor part consists of a simple harmonic line.

95

Bass

Sop 1

Sop 2

Tenor

Detailed description: This system covers measures 95 and 96. The Bass part features a long, sustained note with a fermata over it, spanning both measures. Sopranos 1 and 2 have melodic lines with various notes and rests. The Tenor part has a more active line with eighth and sixteenth notes. The system is divided into two measures by a vertical bar line.

97

Bass

Sop 1

Sop 2

Tenor

Detailed description: This system covers measures 97 and 98. The Bass part has a long, sustained note with a fermata. Sopranos 1 and 2 continue their melodic lines. The Tenor part has a more active line with eighth and sixteenth notes. The system is divided into two measures by a vertical bar line.

99

Bass

Sop 1

Sop 2

Tenor

Detailed description: This system covers measures 99 and 100. The Bass part has a long, sustained note with a fermata. Sopranos 1 and 2 continue their melodic lines. The Tenor part has a more active line with eighth and sixteenth notes. The system is divided into two measures by a vertical bar line.

Onbekende Klassieke SongsDiversen - GROSSO3

Bass

♩ = 120,000000

19

24

29

♩ = 50,000000

34

♩ = 120,000000

38

42

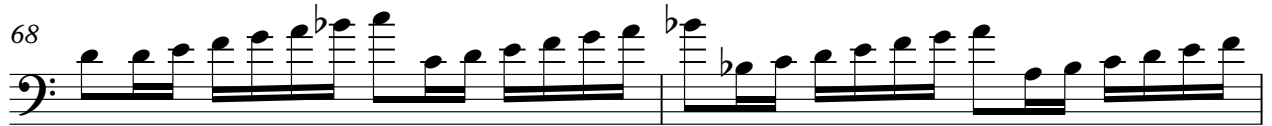
45

48

53

57

V.S.



97

Bass

3

The image shows a musical score for a bass guitar. It consists of a single staff with a treble clef and a bass clef. The staff contains a sequence of notes: a half note G2, a half note F2, a half note E2, a half note D2, a half note C2, a half note B1, a half note A1, and a half note G1. Above the staff, there are three slurs, each covering two notes. Below the staff, there is a guitar tablature line with fret numbers: 2, 1, 0, 0, 0, 0, 2, 1, 5, 4, 3, 2, 0, 0, 0, 0. The number '3' is written above the tablature line at the end. The word 'Bass' is written above the staff, and the number '97' is written to the left of the staff. The number '3' is written above the staff at the end.

Sop 1

47

52

56

60

63

66

71

75

78

83

Sop 1

86

Musical staff for measure 86, featuring a treble clef and a key signature of one flat. The staff contains a sequence of eighth notes with various accidentals (flats and sharps).

89

Musical staff for measure 89, featuring a treble clef and a key signature of one flat. The staff contains a sequence of eighth notes with various accidentals (sharps and flats).

91

Musical staff for measure 91, featuring a treble clef and a key signature of one flat. The staff contains a sequence of eighth notes with various accidentals (sharps and flats).

94

Musical staff for measure 94, featuring a treble clef and a key signature of one flat. The staff contains a sequence of eighth notes with various accidentals (sharps and flats).

97

Musical staff for measure 97, featuring a treble clef and a key signature of one flat. The staff contains a sequence of eighth notes with various accidentals (flats and sharps).

100

Musical staff for measure 100, featuring a treble clef and a key signature of one flat. The staff contains a sequence of notes with a slur over the last three notes. A guitar tablature string is provided below the staff: $\text{1 2 0 0 4 0 0 9 9 2 3 5 5 2 0 5 0 7 8 0 0 0 3 1}$.

Tenor

♩ = 120,000000

19

22

25

29

♩ = 50,000000

34

♩ = 120,000000

4

41

46

49

53

56

V.S.

