

Paul Van Dyk - crush djkruse

♩ = 135,200302

4/4

NN19 1

NN19 2

NN19 3

4

NN19 1

NN19 2

NN19 3

7

NN19 1

NN19 2

NN19 3

10

NN19 1

NN19 2

NN19 3

13

NN19 1

NN19 2

NN19 3

Measures 13-15: NN19 1 and NN19 3 play sustained chords. NN19 2 plays a rhythmic eighth-note pattern.

16

NN19 1

NN19 2

NN19 3

Measures 16-18: NN19 1 and NN19 3 play sustained chords. NN19 2 plays a rhythmic eighth-note pattern.

19

NN19 1

NN19 2

NN19 3

Measures 19-21: NN19 1 and NN19 3 play sustained chords. NN19 2 plays a rhythmic eighth-note pattern.

22

NN19 1

NN19 2

NN19 3

Measures 22-24: NN19 1 and NN19 3 play sustained chords. NN19 2 plays a rhythmic eighth-note pattern.

25

NN19 1

NN19 2

NN19 3

28

NN19 1

NN19 2

NN19 3

31

NN19 1

NN19 2

NN19 3

36

NN19 1

NN19 3

44

NN19 1

53

NN19 1

4

62  
NN19 1



A musical staff in treble clef containing nine measures, each with a whole rest. The number 62 is positioned above the first measure.

71  
NN19 1



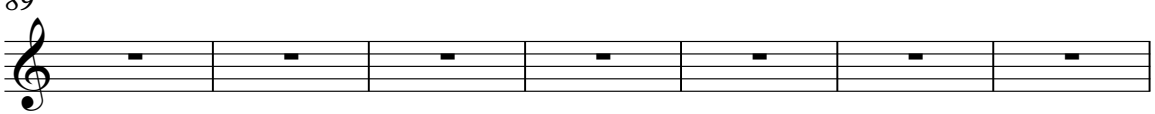
A musical staff in treble clef containing nine measures, each with a whole rest. The number 71 is positioned above the first measure.

80  
NN19 1




A musical staff in treble clef containing nine measures, each with a whole rest. The number 80 is positioned above the first measure.

89  
NN19 1



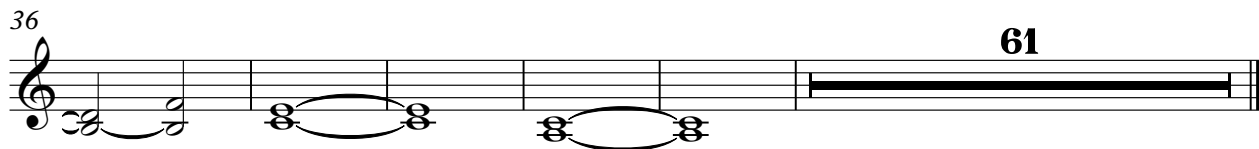
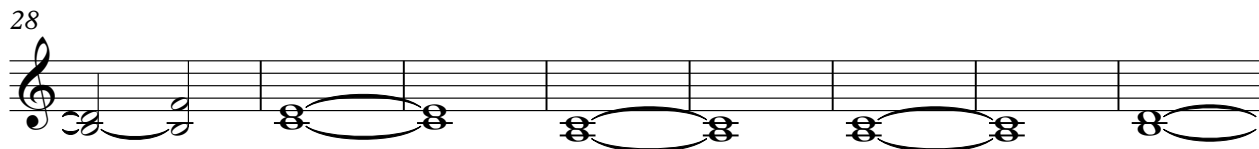
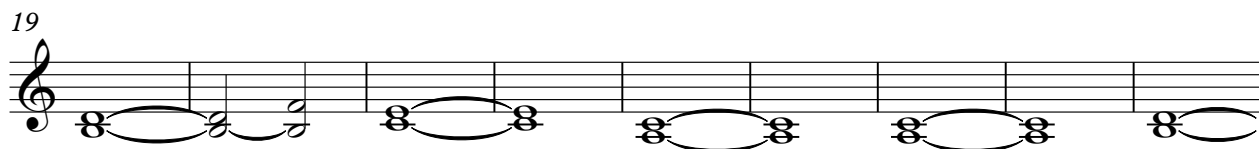
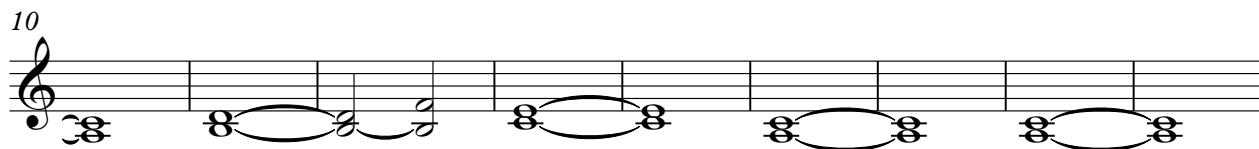
A musical staff in treble clef containing seven measures, each with a whole rest. The number 89 is positioned above the first measure.

96  
NN19 1



A musical staff in treble clef containing six measures, each with a whole rest. The number 96 is positioned above the first measure. The staff ends with a double bar line.

♩ = 135,200302



♩ = 135,200302



5



9



13



17



21



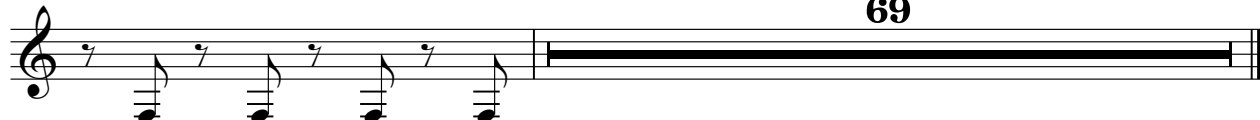
25



29



32



♩ = 135,200302

10

19

28

36

61