

# Pink - Wish You Where Here 2

♩ = 125,000000

Musical score for the first system of 'Wish You Where Here 2'. The score is in 4/4 time and consists of six staves: Percussion, Steel-stGt, Overdrive, FingeredBs, Strings, and Sweep Pad. The tempo is marked as ♩ = 125,000000. The Percussion, Overdrive, FingeredBs, and Strings staves are currently empty. The Steel-stGt staff contains a sequence of chords: a whole rest, followed by a series of chords in the first five measures. The Sweep Pad staff is also empty.

♩ = 125,000000

Musical score for the second system of 'Wish You Where Here 2', starting at measure 6. The Steel-stGt staff contains a sequence of chords: a whole rest, followed by a series of chords in the first five measures. The Overdrive staff is empty.

Musical score for the third system of 'Wish You Where Here 2', starting at measure 11. The Steel-stGt staff contains a sequence of chords: a whole rest, followed by a series of chords in the first five measures. The Overdrive staff is empty.

16

Percussion

Steel-stGt

Overdrive

FingeredBs

Strings

Sweep Pad

20

Percussion

Steel-stGt

FingeredBs

Strings

Sweep Pad

24

Percussion

Steel-stGt

FingeredBs

Strings

Sweep Pad

28

Percussion

Steel-stGt

FingeredBs

Strings

Sweep Pad

31

Percussion

Steel-stGt

FingeredBs

Strings

Sweep Pad

35

Percussion

Steel-stGt

Overdrive

FingeredBs

Strings

Sweep Pad

38

Percussion

Steel-stGt

Overdrive

FingeredBs

Strings

Sweep Pad

42

Percussion

Steel-stGt

Overdrive

FingeredBs

Strings

Sweep Pad

45

Percussion

Steel-stGt

Overdrive

FingeredBs

Strings

Sweep Pad

48

Percussion

Steel-stGt

Overdrive

FingeredBs

Strings

Sweep Pad

52

Percussion

Steel-stGt

Overdrive

FingeredBs

Sweep Pad

56

Percussion

Steel-stGt

Overdrive

FingeredBs

Sweep Pad

60

Percussion

Steel-stGt

Overdrive

FingeredBs

Sweep Pad

64

Percussion

Steel-stGt

Overdrive

FingeredBs

Sweep Pad



68

Percussion

Steel-stGt

Overdrive

FingeredBs

Strings

Sweep Pad

72

Percussion

Steel-stGt

Overdrive

FingeredBs

Strings

Sweep Pad

76

Percussion

Steel-stGt

Overdrive

FingeredBs

Strings

Sweep Pad

Detailed description: This system of musical notation covers measures 76, 77, and 78. The Percussion part features a steady eighth-note pattern. The Steel-string guitar part consists of complex chordal textures with many notes beamed together. The Overdrive part has long, sustained notes with a curved line above them. The Fingered Bass part plays a simple sequence of notes. The Strings part has a melodic line with some rests. The Sweep Pad part features long, horizontal lines indicating sustained or swept sounds.

79

Percussion

Steel-stGt

Overdrive

FingeredBs

Strings

Sweep Pad

Detailed description: This system of musical notation covers measures 79, 80, and 81. The Percussion part continues with a similar eighth-note pattern. The Steel-string guitar part shows more complex chordal textures. The Overdrive part has long, sustained notes with a curved line above them. The Fingered Bass part plays a simple sequence of notes. The Strings part has a melodic line with some rests. The Sweep Pad part features long, horizontal lines indicating sustained or swept sounds.

82

Percussion

Steel-stGt

Overdrive

FingeredBs

Strings

Sweep Pad

86

Percussion

Steel-stGt

Overdrive

FingeredBs

Sweep Pad

90

Percussion

Steel-stGt

Overdrive

FingeredBs

Sweep Pad

94

Percussion

Steel-stGt

Overdrive

FingeredBs

Sweep Pad

98

Percussion

Steel-stGt

Overdrive

FingeredBs

Sweep Pad

102

Percussion

Steel-stGt

Overdrive

FingeredBs

Strings

Sweep Pad

106

Percussion

Steel-stGt

Overdrive

FingeredBs

Strings

Sweep Pad

Detailed description: This system of musical notation covers measures 106 through 109. The Percussion part features a steady eighth-note pattern with occasional accents. The Steel-string guitar part consists of chords and melodic lines, including a 7/7 time signature change in measure 107. The Overdrive part provides harmonic support with sustained notes and melodic fragments. The Fingered Bass part has a consistent eighth-note bass line. The Strings part is silent, indicated by a whole rest. The Sweep Pad part uses long, sweeping notes to create a atmospheric background.

110

Percussion

Steel-stGt

Overdrive

FingeredBs

Strings

Sweep Pad

Detailed description: This system of musical notation covers measures 110 through 113. The Percussion part continues with its eighth-note pattern. The Steel-string guitar part shows a change in chord voicing and melodic direction, featuring a sharp sign in measure 111. The Overdrive part maintains its harmonic role with sustained notes. The Fingered Bass part continues with its eighth-note line. The Strings part remains silent. The Sweep Pad part continues with its sweeping, atmospheric texture.

114

Percussion

Steel-stGt

Overdrive

FingeredBs

Strings

Sweep Pad

Detailed description: This system of musical notation covers measures 114 through 117. The Percussion part features a steady eighth-note pattern. The Steel-string guitar (Steel-stGt) and Overdrive parts play a melodic line with a sharp key signature and a 7/8 time signature, characterized by long, sweeping notes. The Fingered Bass (FingeredBs) part provides a bass line with a mix of eighth and quarter notes. The Strings part is silent, indicated by a whole rest. The Sweep Pad part features a complex, layered texture with multiple overlapping notes and a 7/8 time signature.

118

Percussion

Steel-stGt

Overdrive

FingeredBs

Strings

Sweep Pad

Detailed description: This system of musical notation covers measures 118 through 121. The Percussion part continues with its eighth-note pattern. The Steel-string guitar (Steel-stGt) and Overdrive parts continue their melodic line, with some notes being held across measures. The Fingered Bass (FingeredBs) part continues its bass line. The Strings part remains silent. The Sweep Pad part continues its layered texture.

122

Percussion

Steel-stGt

Overdrive

FingeredBs

Strings

Sweep Pad

The musical score for measures 122-125 consists of six staves. The Percussion staff features a consistent eighth-note pattern. The Steel-stGt and Overdrive staves play a melodic line starting with a rest in measure 122, followed by a series of eighth notes and a quarter note in measure 123, and ending with a quarter note in measure 124. The FingeredBs staff has a bass line with a slur over the first two notes of measure 122, followed by eighth notes and a quarter note in measure 123, and ending with a quarter note in measure 124. The Strings staff plays a rhythmic eighth-note pattern with rests. The Sweep Pad staff has a long sustained chord with a tremolo effect, starting in measure 122 and ending in measure 124.



# Pink - Wish You Where Here 2

## Percussion

♩ = 125,000000

**16**

21

27

33

38

43

49

54

59

64

V.S.



Pink - Wish You Where Here 2

Steel-stGt

♩ = 125,000000

7

12

17

22

27

32

38

45

51

V.S.

57



63



69



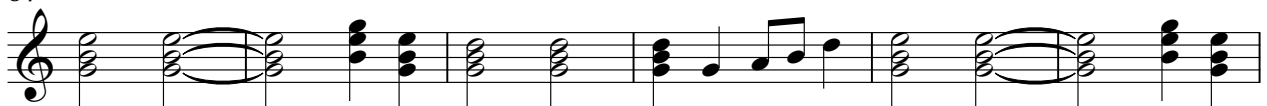
74



79



84



90



96



103



109



115



120



# Pink - Wish You Where Here 2

Overdrive

♩ = 125,000000

10 4 18

36 4

44 3

51

57

63 5

74

81

87

93

V.S.

2

# Overdrive

99



105



111



117



121









Strings

Pink - Wish You Where Here 2

♩ = 125,000000

16 2

22

27

32

37

42

46

49 17



Pink - Wish You Where Here 2

Sweep Pad

♩ = 125,000000

16

22

29

36

43

50

57

64

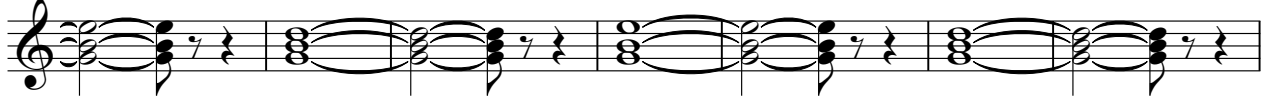
71

78

Detailed description: The image shows a musical score for a 'Sweep Pad' in 4/4 time. The tempo is marked as ♩ = 125,000000. The score begins at measure 16. The first staff shows a whole rest followed by a thick bar line, then a series of chords and melodic lines. The subsequent staves (22, 29, 36, 43, 50, 57, 64, 71, 78) continue this pattern with various chord voicings and melodic fragments. The notation includes treble clefs, 4/4 time signatures, and various note values and rests.

V.S.

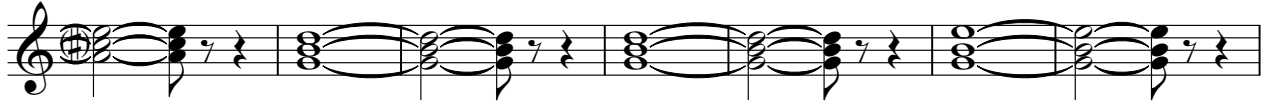
85



92



99



106



113



119

