

Python Monty - Always Look On The Bright Side Of Life

♩ = 118,999924

Whistle

Drumsgs

MELODIE

GuitarE

Bassngs

Choirle

♩ = 118,999924

Strings

Pianole

MELODIE

GuitarE

MELODIE

GuitarE

9

MELODIE

GuitarE

12

MELODIE

GuitarE

14

Drumsgs

MELODIE

GuitarE

Bassngs

Pianole

17

Whistle

Drumsgs

MELODIE

Bassngs

Pianole

19

Drumsgs

MELODIE

Bassngs

Pianole

21

Whistle

Drumsgs

MELODIE

Bassngs

Pianole

23

Drumsgs

MELODIE

Bassngs

Choirle

Pianole

25

Drumsgs
MELODIE
Bassngs
Choirle
Pianole

This musical system covers measures 25 and 26. The Drumsgs part features a consistent rhythmic pattern of eighth notes with 'x' marks above them. The MELODIE part starts with a series of eighth notes, followed by a triplet of eighth notes in measure 26. The Bassngs part has a melodic line with a slur and a triplet of eighth notes in measure 26. The Choirle part consists of two chords: a G major chord in measure 25 and a B minor chord in measure 26. The Pianole part features a steady accompaniment of eighth notes with chords, including a triplet in measure 26.



27

Drumsgs
MELODIE
Bassngs
Choirle
Pianole

This musical system covers measures 27 and 28. The Drumsgs part continues with the same rhythmic pattern. The MELODIE part begins with a triplet of eighth notes in measure 27, followed by a quarter note and another triplet of eighth notes in measure 28. The Bassngs part features a melodic line with a slur and a triplet of eighth notes in measure 27. The Choirle part has two chords: a G major chord in measure 27 and a B minor chord in measure 28. The Pianole part continues with eighth notes and chords, including a triplet in measure 27.

29

Drumsgs

MELODIE

Bassngs

Choirle

Strings

Pianole



31

Whistle

Drumsgs

MELODIE

Bassngs

Choirle

Strings

Pianole

34

Whistle

Drumsgs

MELODIE

Bassngs

Choirle

Strings

Pianole

36

Whistle

Drumsgs

MELODIE

Bassngs

Choirle

Strings

Pianole

38

Whistle

Drumsgs

MELODIE

Bassngs

Choirle

Strings

Pianole



40

Drumsgs

MELODIE

Bassngs

Choirle

Strings

Pianole

42

Drumsgs

MELODIE

Bassngs

Choirle

Strings

Pianole



44

Drumsgs

MELODIE

Bassngs

Choirle

Strings

Pianole

46

Drumsgs

MELODIE

Bassngs

Choirle

Strings

Pianole



49

Whistle

Drumsgs

MELODIE

Bassngs

Choirle

Strings

Pianole

51

Drumsgs
MELODIE
Bassngs
Choirle
Strings
Pianole

Detailed description: This system contains measures 51 and 52. The Drumsgs part features a consistent rhythmic pattern of eighth notes with 'x' marks above them. The MELODIE part is in treble clef with a sequence of eighth and quarter notes. Bassngs is in bass clef with a melodic line of eighth and quarter notes, some beamed together. Choirle is in treble clef with block chords. Strings is in bass clef with block chords. Pianole is in treble clef with chords and eighth notes.



53

Whistle
Drumsgs
MELODIE
Bassngs
Choirle
Strings
Pianole

Detailed description: This system contains measures 53 and 54. The Whistle part has a melodic line with eighth notes and rests. Drumsgs continues with the eighth-note pattern, including a triplet of eighth notes in measure 54. MELODIE has rests in measure 53 and a melodic phrase in measure 54. Bassngs has a melodic line with eighth notes and a triplet in measure 54. Choirle has a block chord in measure 53 and rests in measure 54. Strings has block chords in both measures. Pianole has chords and eighth notes in both measures.

55

Drumsgs

MELODIE

Bassngs

Choirle

Strings

Pianole



57

Drumsgs

MELODIE

Bassngs

Choirle

Strings

Pianole

59

Drumsgs

MELODIE

Bassngs

Choirle

Strings

Pianole



61

Drumsgs

MELODIE

Bassngs

Choirle

Strings

Pianole

63

Drumsgs

MELODIE

Bassngs

Choirle

Strings

Pianole



66

Drumsgs

MELODIE

Bassngs

Choirle

Strings

Pianole

68

Drumsgs

MELODIE

Bassngs

Choirle

Strings

Pianole



70

Drumsgs

MELODIE

Bassngs

Choirle

Strings

Pianole

72

Whistle

Drumsgs

MELODIE

Bassngs

Choirle

Strings

Pianole

74

Whistle

Drumsgs

MELODIE

Bassngs

Choirle

Strings

Pianole

Musical score for page 16, measures 76-81. The score includes parts for Whistle, Drums, MELODIE, Bass, Choir, Strings, and Piano. A double bar line is present between measures 76 and 78.

Measure 76:

- Whistle:** Rest, then eighth notes G4, A4, B4, C5, B4, A4, G4.
- Drums:** Snare drum pattern: x, x, x, x, x, x, x, x, x, x, x, x, x, x, x, x.
- MELODIE:** Quarter notes G4, A4, B4, C5, B4, A4, G4.
- Bass:** Quarter notes G3, A3, B3, C4, B3, A3, G3. A triplet of eighth notes G3, A3, B3 is marked with a '3'.
- Choir:** Chords: G4, A4, B4, C5, B4, A4, G4.
- Strings:** Chords: G4, A4, B4, C5, B4, A4, G4.
- Piano:** Chords: G4, A4, B4, C5, B4, A4, G4.

Measure 77:

- Whistle:** Eighth notes G4, A4, B4, C5, B4, A4, G4.
- Drums:** Snare drum pattern: x, x, x, x, x, x, x, x, x, x, x, x, x, x, x, x.
- MELODIE:** Quarter notes G4, A4, B4, C5, B4, A4, G4.
- Bass:** Quarter notes G3, A3, B3, C4, B3, A3, G3. A triplet of eighth notes G3, A3, B3 is marked with a '3'.
- Choir:** Chords: G4, A4, B4, C5, B4, A4, G4.
- Strings:** Chords: G4, A4, B4, C5, B4, A4, G4.
- Piano:** Chords: G4, A4, B4, C5, B4, A4, G4.

Measure 78:

- Whistle:** Eighth notes G4, A4, B4, C5, B4, A4, G4.
- Drums:** Snare drum pattern: x, x, x, x, x, x, x, x, x, x, x, x, x, x, x, x.
- MELODIE:** Quarter notes G4, A4, B4, C5, B4, A4, G4.
- Bass:** Quarter notes G3, A3, B3, C4, B3, A3, G3. A triplet of eighth notes G3, A3, B3 is marked with a '3'.
- Choir:** Chords: G4, A4, B4, C5, B4, A4, G4.
- Strings:** Chords: G4, A4, B4, C5, B4, A4, G4.
- Piano:** Chords: G4, A4, B4, C5, B4, A4, G4.

Measure 79:

- Whistle:** Rest.
- Drums:** Snare drum pattern: x, x, x, x, x, x, x, x, x, x, x, x, x, x, x, x.
- MELODIE:** Quarter notes G4, A4, B4, C5, B4, A4, G4.
- Bass:** Quarter notes G3, A3, B3, C4, B3, A3, G3.
- Choir:** Chords: G4, A4, B4, C5, B4, A4, G4.
- Strings:** Chords: G4, A4, B4, C5, B4, A4, G4.
- Piano:** Chords: G4, A4, B4, C5, B4, A4, G4.

Measure 80:

- Whistle:** Eighth notes G4, A4, B4, C5, B4, A4, G4.
- Drums:** Snare drum pattern: x, x, x, x, x, x, x, x, x, x, x, x, x, x, x, x.
- MELODIE:** Quarter notes G4, A4, B4, C5, B4, A4, G4.
- Bass:** Quarter notes G3, A3, B3, C4, B3, A3, G3.
- Choir:** Chords: G4, A4, B4, C5, B4, A4, G4.
- Strings:** Chords: G4, A4, B4, C5, B4, A4, G4.
- Piano:** Chords: G4, A4, B4, C5, B4, A4, G4.

Measure 81:

- Whistle:** Eighth notes G4, A4, B4, C5, B4, A4, G4.
- Drums:** Snare drum pattern: x, x, x, x, x, x, x, x, x, x, x, x, x, x, x, x.
- MELODIE:** Quarter notes G4, A4, B4, C5, B4, A4, G4.
- Bass:** Quarter notes G3, A3, B3, C4, B3, A3, G3.
- Choir:** Chords: G4, A4, B4, C5, B4, A4, G4.
- Strings:** Chords: G4, A4, B4, C5, B4, A4, G4.
- Piano:** Chords: G4, A4, B4, C5, B4, A4, G4.

80

Whistle

Drumsgs

MELODIE

Bassngs

Choirle

Strings

Pianole

82

Whistle

Drumsgs

MELODIE

Bassngs

Choirle

Strings

Pianole

88

Whistle

Drumsgs

MELODIE

Bassngs

Choirle

Strings

Pianole

90

Whistle

Drumsgs

MELODIE

Bassngs

Choirle

Strings

Pianole

This musical score page contains measures 92 through 94. The instruments and parts are as follows:

- Whistle:** Measures 92-94, featuring a melodic line with a triplet in measure 94.
- Drumsgs:** Measures 92-94, featuring a complex rhythmic pattern with various drum sounds.
- MELODIE:** Measures 92-94, featuring a melodic line with a triplet in measure 94.
- Bassngs:** Measures 92-94, featuring a bass line with a triplet in measure 94.
- Choirle:** Measures 92-94, featuring a choral part with a triplet in measure 94.
- Strings:** Measures 92-94, featuring a string part with a triplet in measure 94.
- Pianole:** Measures 92-94, featuring a piano part with a triplet in measure 94.

A double bar line is present on the left side of the page, between measures 93 and 94.

This musical score page contains two systems of music, measures 96-107. The instruments and parts are: Whistle, Drums, MELODIE, Bass, Choir, Strings, and Piano. The score is written in a key with one sharp (F#) and a 2/4 time signature. The MELODIE part is the primary melodic line, often featuring triplets and slurs. The Bass part provides a steady accompaniment with slurs. The Piano part features complex chordal textures and triplets. The Drums part has a consistent rhythmic pattern. The Whistle part has a melodic line with some rests. The Choir and Strings parts provide harmonic support with block chords and sustained notes. A double bar line is present between measures 97 and 98.

100

Whistle

Drumsgs

MELODIE

Bassngs

Choirle

Strings

Pianole

102

Whistle

Drumsgs

MELODIE

Bassngs

Choirle

Strings

Pianole

The musical score for page 22, measures 100-102, is presented in a multi-staff format. The top system (measures 100-101) includes parts for Whistle, Drums, MELODIE, Bass, Choir, Strings, and Piano. The bottom system (measures 102) includes parts for Whistle, Drums, MELODIE, Bass, Choir, Strings, and Piano. The score is written in a key signature of one sharp (F#) and a common time signature (C). The MELODIE part is written in a treble clef, while the Bassngs part is in a bass clef. The Drums part uses a standard drum notation with 'x' marks for cymbals and vertical lines for other drums. The Piano part is written in a treble clef and features complex chordal textures. The Choir part is written in a treble clef and consists of block chords. The Strings part is written in a bass clef and consists of block chords. The Whistle part is written in a treble clef and consists of a melodic line. The score is marked with a double bar line between measures 101 and 102. The MELODIE part in measure 101 has a triplet of eighth notes. The Drums part in measure 101 has a triplet of eighth notes. The Bassngs part in measure 101 has a triplet of eighth notes. The Piano part in measure 101 has a triplet of eighth notes. The Choir part in measure 101 has a triplet of eighth notes. The Strings part in measure 101 has a triplet of eighth notes. The Whistle part in measure 101 has a triplet of eighth notes.

104

Drumsgs

MELODIE

Bassngs

Choirle

Strings

Pianole

Python Monty - Always Look On The Bright Side Of Life

Whistle

♩ = 118,999924

15

19 2 10

33 2

38 10

51 2 18

73 2

78 2

83 2 2

89 2

93 2

2

Whistle

97

Musical notation for a whistle melody, measures 97-100. The notation is on a single treble clef staff. Measure 97 starts with a quarter rest, followed by a quarter note G4, an eighth note A4, and a quarter note B4. Measure 98 contains a quarter note C5, an eighth note B4, a quarter note A4, and a quarter note G4. Measure 99 contains a quarter note F4, an eighth note G4, a quarter note A4, and a quarter note B4. Measure 100 contains a quarter note C5, an eighth note B4, a quarter note A4, and a quarter note G4. The piece concludes with a double bar line. A large number '2' is positioned above the staff in the final measure.

101

Musical notation for a whistle melody, measures 101-104. The notation is on a single treble clef staff. Measure 101 starts with a quarter rest, followed by a quarter note G4, an eighth note A4, and a quarter note B4. Measure 102 contains a quarter note C5, an eighth note B4, a quarter note A4, and a quarter note G4. Measure 103 contains a quarter note F4, an eighth note G4, a quarter note A4, and a quarter note B4. Measure 104 contains a quarter note C5, an eighth note B4, a quarter note A4, and a quarter note G4. The piece concludes with a double bar line. A large number '4' is positioned above the staff in the final measure.

Drumsgs

Python Monty - Always Look On The Bright Side Of Life

♩ = 118,999924

12

16

19

22

25

28

31

34

37

40

V.S.

Drumsgs

43

46

49

52

55

58

61

64

67

70

Drumsgs

73

Musical notation for measure 73, featuring a drum staff with a double bar line and a bass staff with a treble clef. The drum staff contains a series of eighth notes with 'x' marks above them, indicating a specific drum sound. The bass staff contains a series of eighth notes, with a triplet of eighth notes marked with a '3' and a bracket.

76

Musical notation for measure 76, featuring a drum staff with a double bar line and a bass staff with a treble clef. The drum staff contains a series of eighth notes with 'x' marks above them. The bass staff contains a series of eighth notes, with a triplet of eighth notes marked with a '3' and a bracket.

79

Musical notation for measure 79, featuring a drum staff with a double bar line and a bass staff with a treble clef. The drum staff contains a series of eighth notes with 'x' marks above them. The bass staff contains a series of eighth notes.

82

Musical notation for measure 82, featuring a drum staff with a double bar line and a bass staff with a treble clef. The drum staff contains a series of eighth notes with 'x' marks above them. The bass staff contains a series of eighth notes, with a triplet of eighth notes marked with a '3' and a bracket.

85

Musical notation for measure 85, featuring a drum staff with a double bar line and a bass staff with a treble clef. The drum staff contains a series of eighth notes with 'x' marks above them. The bass staff contains a series of eighth notes, with a triplet of eighth notes marked with a '3' and a bracket.

88

Musical notation for measure 88, featuring a drum staff with a double bar line and a bass staff with a treble clef. The drum staff contains a series of eighth notes with 'x' marks above them. The bass staff contains a series of eighth notes, with a triplet of eighth notes marked with a '3' and a bracket.

91

Musical notation for measure 91, featuring a drum staff with a double bar line and a bass staff with a treble clef. The drum staff contains a series of eighth notes with 'x' marks above them. The bass staff contains a series of eighth notes.

94

Musical notation for measure 94, featuring a drum staff with a double bar line and a bass staff with a treble clef. The drum staff contains a series of eighth notes with 'x' marks above them. The bass staff contains a series of eighth notes, with a triplet of eighth notes marked with a '3' and a bracket.

97

Musical notation for measure 97, featuring a drum staff with a double bar line and a bass staff with a treble clef. The drum staff contains a series of eighth notes with 'x' marks above them. The bass staff contains a series of eighth notes, with a triplet of eighth notes marked with a '3' and a bracket.

100

Musical notation for measure 100, featuring a drum staff with a double bar line and a bass staff with a treble clef. The drum staff contains a series of eighth notes with 'x' marks above them. The bass staff contains a series of eighth notes, with a triplet of eighth notes marked with a '3' and a bracket.

V.S.

4

Drumsgs

103

The image shows a musical score for guitar and drums. The guitar part is written on a six-line staff with a treble clef. It begins with a double bar line and a repeat sign. The notation consists of eighth notes, some beamed together, and some with stems pointing down. There are several measures of music, with a triplet of eighth notes in the final measure. The drum part is written on a five-line staff with a treble clef. It consists of a series of 'x' marks, representing drum hits, placed above the staff. The 'x' marks are aligned with the guitar notes. There are two triplet markings above the drum staff, one above the first triplet of guitar notes and one above the final triplet of guitar notes. The score ends with a double bar line.

MELODIE

Python Monty - Always Look On The Bright Side Of Life

♩ = 118,999924

2

7

11

15

20

24

28

32

37

41

V.S.

MELODIE



MELODIE

87

♩ = 118,999924

5

8

11

13

14

92

Python Monty - Always Look On The Bright Side Of Life

Bassngs

♩ = 118,999924

13

18

22

27

31

36

40

45

50

54

V.S.

59



63



68



72



77



81



85



89



93



97



101



104



Python Monty - Always Look On The Bright Side Of Life

Choirle

♩ = 118,999924

21

27

33

39

46

51

57

64

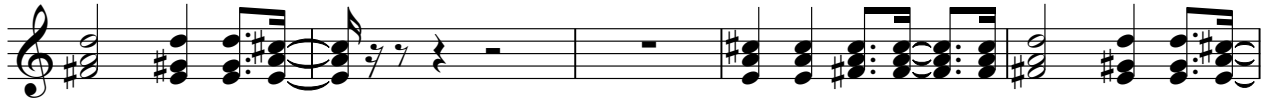
69

74

79



84



89



95



100



104



Python Monty - Always Look On The Bright Side Of Life

Strings

♩ = 118,999924

28

33

39

43

47

53

58

62

66

71

V.S.

2

77

Strings

83

89

95

100

3

Python Monty - Always Look On The Bright Side Of Life

Pianole

♩ = 118,999924

13

17

20

23

26

29

33

36

39

42

V.S.

45

Musical score for Pianole, measures 78-102. The score is written in treble clef with a key signature of one sharp (F#). It features a complex rhythmic pattern with frequent sixteenth notes and rests. The notation includes various articulations such as slurs and accents. Fingerings are indicated by numbers 1-5. Specific technical markings include a sextuplet (6) in measures 78 and 81, and several triplets (3) in measures 83, 86, 89, 94, 97, 99, and 102. The piece concludes with a repeat sign at the end of measure 102.

V.S.

104

