

Ramsey Lewis - Hang On Sloopy

♩ = 120,000000

MIDI 4/4
MIDI 4/4
MIDI 4/4
MIDI 4/4
MIDI 4/4
MIDI 4/4
MIDI 4/4

The first system of MIDI notation consists of seven staves. The first four staves are grouped with a brace on the left. The first staff has a treble clef and 4/4 time signature, with notes in the second and fourth measures. The second staff has a treble clef and 4/4 time signature, with notes in the second and fourth measures. The third staff has a treble clef and 4/4 time signature, with a series of eighth notes marked with 'x' in the second and fourth measures. The fourth staff has a treble clef and 4/4 time signature, with a single note in the second measure. The fifth staff has a treble clef and 4/4 time signature, which is empty. The sixth staff has a bass clef and 4/4 time signature, which is empty. The seventh staff has a bass clef and 4/4 time signature, with notes in the second and fourth measures.



5

MIDI 4/4
MIDI 4/4
MIDI 4/4
MIDI 4/4
MIDI 4/4
MIDI 4/4
MIDI 4/4

The second system of MIDI notation consists of seven staves. The first four staves are grouped with a brace on the left. The first staff has a treble clef and 4/4 time signature, with notes in the second and fourth measures. The second staff has a treble clef and 4/4 time signature, with notes in the second and fourth measures. The third staff has a treble clef and 4/4 time signature, with a series of eighth notes marked with 'x' in the second and fourth measures. The fourth staff has a treble clef and 4/4 time signature, with a single note in the second measure. The fifth staff has a treble clef and 4/4 time signature, with notes in the second and fourth measures. The sixth staff has a bass clef and 4/4 time signature, with notes in the second and fourth measures. The seventh staff has a bass clef and 4/4 time signature, with notes in the second and fourth measures.

8



11

14

MIDI MIDI MIDI MIDI MIDI

This system contains five MIDI staves for measures 14, 15, and 16. The first staff (MIDI) has a treble clef and a key signature of one sharp (F#). It contains quarter notes with stems pointing up. The second staff (MIDI) has a treble clef and contains quarter notes with stems pointing down. The third staff (MIDI) has a treble clef and contains eighth notes with stems pointing down. The fourth staff (MIDI) has a treble clef and contains chords with stems pointing down. The fifth staff (MIDI) has a bass clef and contains eighth notes with stems pointing down.



17

MIDI MIDI MIDI MIDI MIDI

This system contains five MIDI staves for measures 17, 18, and 19. The notation is identical to the first system, with five MIDI staves for measures 17, 18, and 19.



20

MIDI MIDI MIDI MIDI MIDI

This system contains five MIDI staves for measures 20, 21, and 22. The notation is identical to the previous systems, with five MIDI staves for measures 20, 21, and 22.

23

MIDI

MIDI

MIDI

MIDI

MIDI

MIDI

This system contains measures 23, 24, and 25. It features five MIDI staves. The top two staves are in a piano (p) dynamic, with the first staff playing a melody of quarter notes and the second staff playing a similar melody. The third staff is a drum set with a consistent pattern of snare and hi-hat hits. The fourth staff is a grand piano (G) with a chordal accompaniment of chords and eighth notes. The fifth staff is a grand bass (B) with a bass line of eighth notes.



26

MIDI

MIDI

MIDI

MIDI

MIDI

MIDI

This system contains measures 26, 27, and 28. It features five MIDI staves. The top two staves are in a piano (p) dynamic, with the first staff playing a melody that includes a sixteenth-note run in measure 28. The second staff plays a similar melody. The third staff is a drum set with a consistent pattern of snare and hi-hat hits. The fourth staff is a grand piano (G) with a chordal accompaniment of chords and eighth notes. The fifth staff is a grand bass (B) with a bass line of eighth notes.



29

MIDI

MIDI

MIDI

MIDI

MIDI

MIDI

MIDI

This system contains measures 29, 30, and 31. It features six MIDI staves. The top two staves are in a piano (p) dynamic, with the first staff playing a melody of quarter notes and the second staff playing a similar melody. The third staff is a drum set with a consistent pattern of snare and hi-hat hits. The fourth staff is a grand piano (G) with a chordal accompaniment of chords and eighth notes. The fifth staff is a grand bass (B) with a bass line of eighth notes. The sixth staff is a grand piano (G) with a chordal accompaniment of chords and eighth notes.

32

MIDI

MIDI

MIDI

MIDI

MIDI

MIDI

MIDI



35

MIDI

MIDI

MIDI

MIDI

MIDI

MIDI

MIDI

38

MIDI MIDI MIDI MIDI MIDI

This system contains five MIDI staves. The first three staves are grouped by a brace on the left. The first staff has a treble clef and a key signature of one sharp (F#). It contains three measures of music with notes on the 1st, 2nd, and 3rd lines. The second staff has a treble clef and contains three measures of music with notes on the 1st, 2nd, and 3rd lines. The third staff has a treble clef and contains three measures of music with 'x' marks on the 1st, 2nd, and 3rd lines. The fourth staff has a treble clef and contains three measures of music with chords on the 1st, 2nd, and 3rd lines. The fifth staff has a bass clef and contains three measures of music with notes on the 1st, 2nd, and 3rd lines.



41

MIDI MIDI MIDI MIDI MIDI

This system contains five MIDI staves. The first three staves are grouped by a brace on the left. The first staff has a treble clef and a key signature of one sharp (F#). It contains three measures of music with notes on the 1st, 2nd, and 3rd lines. The second staff has a treble clef and contains three measures of music with notes on the 1st, 2nd, and 3rd lines. The third staff has a treble clef and contains three measures of music with 'x' marks on the 1st, 2nd, and 3rd lines. The fourth staff has a treble clef and contains three measures of music with chords on the 1st, 2nd, and 3rd lines. The fifth staff has a bass clef and contains three measures of music with notes on the 1st, 2nd, and 3rd lines.



44

MIDI MIDI MIDI MIDI MIDI

This system contains five MIDI staves. The first three staves are grouped by a brace on the left. The first staff has a treble clef and a key signature of one sharp (F#). It contains three measures of music with notes on the 1st, 2nd, and 3rd lines. The second staff has a treble clef and contains three measures of music with notes on the 1st, 2nd, and 3rd lines. The third staff has a treble clef and contains three measures of music with 'x' marks on the 1st, 2nd, and 3rd lines. The fourth staff has a treble clef and contains three measures of music with chords on the 1st, 2nd, and 3rd lines. The fifth staff has a bass clef and contains three measures of music with notes on the 1st, 2nd, and 3rd lines.

47



50



53

56

MIDI
MIDI
MIDI
MIDI
MIDI
MIDI

This system contains MIDI notation for measures 56, 57, and 58. It features six staves: four drum tracks and two piano tracks. The first drum track has a pattern of quarter notes with stems pointing up. The second drum track has a pattern of quarter notes with stems pointing down. The third drum track has a pattern of eighth notes with stems pointing down. The fourth drum track has a pattern of eighth notes with stems pointing down. The piano tracks show chords and single notes.



59

MIDI
MIDI
MIDI
MIDI
MIDI
MIDI

This system contains MIDI notation for measures 59, 60, and 61. It features six staves: four drum tracks and two piano tracks. The first drum track has a pattern of quarter notes with stems pointing up. The second drum track has a pattern of quarter notes with stems pointing down. The third drum track has a pattern of eighth notes with stems pointing down. The fourth drum track has a pattern of eighth notes with stems pointing down. The piano tracks show chords and single notes.



62

MIDI
MIDI
MIDI
MIDI
MIDI
MIDI

This system contains MIDI notation for measures 62, 63, and 64. It features six staves: four drum tracks and two piano tracks. The first drum track has a pattern of quarter notes with stems pointing up. The second drum track has a pattern of quarter notes with stems pointing down. The third drum track has a pattern of eighth notes with stems pointing down. The fourth drum track has a pattern of eighth notes with stems pointing down. The piano tracks show chords and single notes.

65

MIDI
MIDI
MIDI
MIDI
MIDI
MIDI



68

MIDI
MIDI
MIDI
MIDI
MIDI
MIDI

71

MIDI

MIDI

MIDI

MIDI

MIDI

MIDI



74

MIDI

MIDI

MIDI

MIDI

MIDI

MIDI

77

MIDI MIDI MIDI MIDI MIDI MIDI MIDI



80

MIDI MIDI MIDI MIDI MIDI MIDI MIDI

♩ = 120,000000

2

8

14

20

26

31

37

43

49

55

60



65



70



76



79

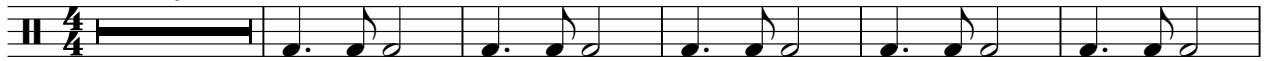


MIDI

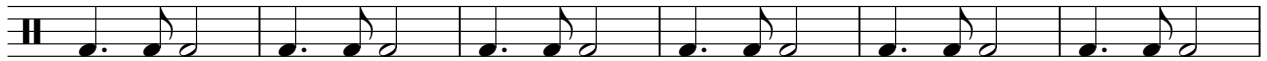
Ramsey Lewis - Hang On Sloopy

♩ = 120,000000

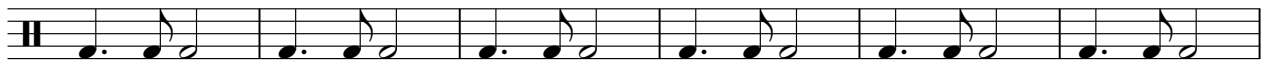
2



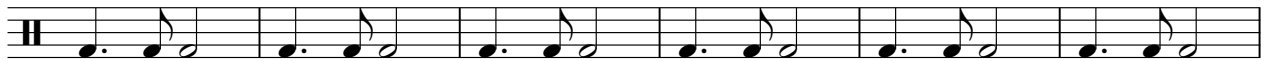
8



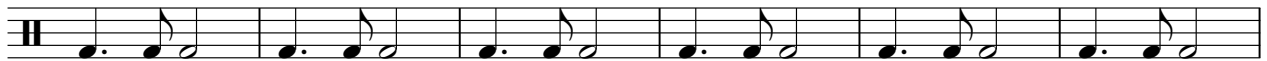
14



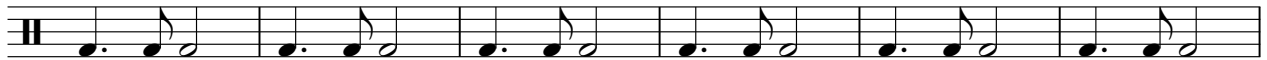
20



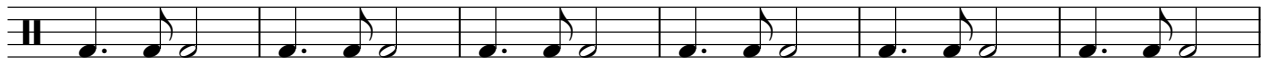
26



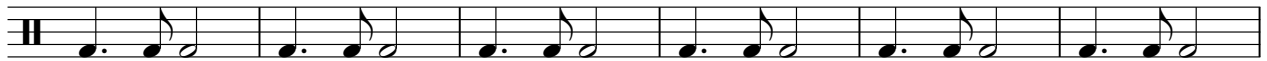
32



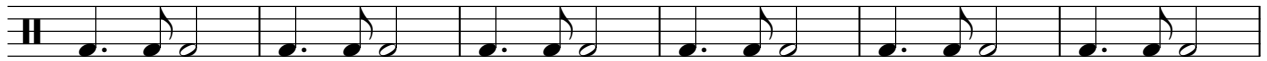
38



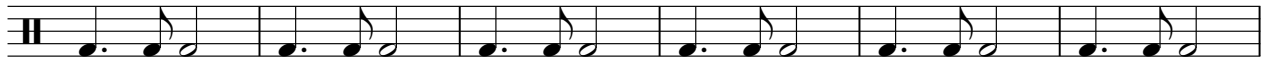
44



50



56

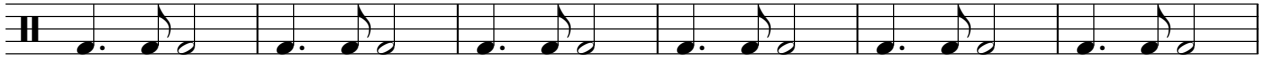


V.S.

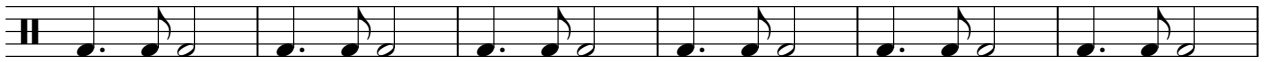
2

MIDI

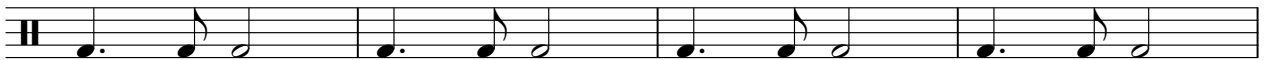
62



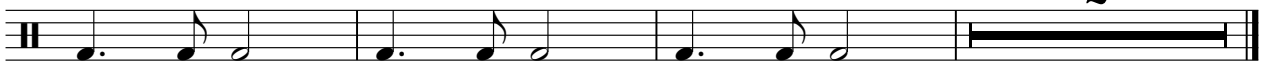
68



74



78



Ramsey Lewis - Hang On Sloopy

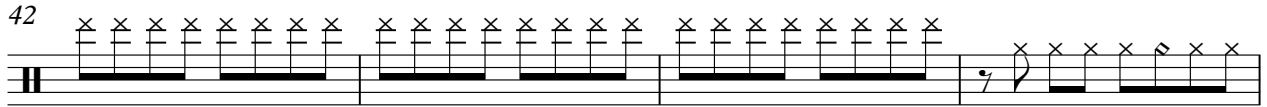
MIDI

♩ = 120,000000
2

2 6 10 14 18 22 26 30 34 38

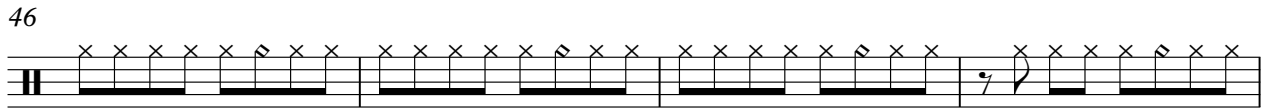
V.S.

42



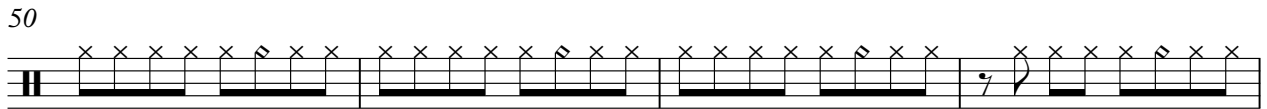
A musical staff for guitar with a double bar line at the beginning. It contains four measures of music. The first three measures each have six 'x' marks above the staff, indicating fretted notes. The fourth measure contains a 7th fret barre symbol (a vertical line with a '7' below it) followed by six 'x' marks.

46



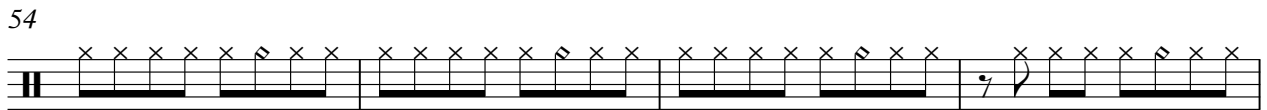
A musical staff for guitar with a double bar line at the beginning. It contains four measures of music. The first three measures each have six 'x' marks above the staff. The fourth measure contains a 7th fret barre symbol followed by six 'x' marks.

50



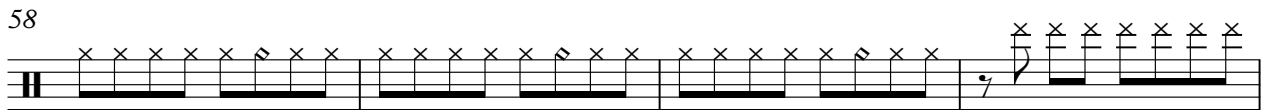
A musical staff for guitar with a double bar line at the beginning. It contains four measures of music. The first three measures each have six 'x' marks above the staff. The fourth measure contains a 7th fret barre symbol followed by six 'x' marks.

54



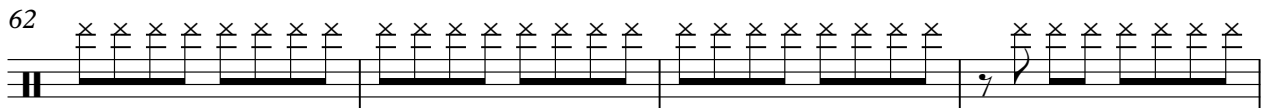
A musical staff for guitar with a double bar line at the beginning. It contains four measures of music. The first three measures each have six 'x' marks above the staff. The fourth measure contains a 7th fret barre symbol followed by six 'x' marks.

58



A musical staff for guitar with a double bar line at the beginning. It contains four measures of music. The first three measures each have six 'x' marks above the staff. The fourth measure contains a 7th fret barre symbol followed by six 'x' marks.

62



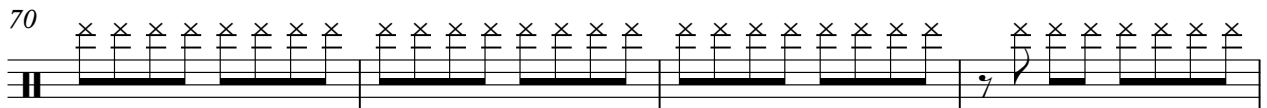
A musical staff for guitar with a double bar line at the beginning. It contains four measures of music. The first three measures each have six 'x' marks above the staff. The fourth measure contains a 7th fret barre symbol followed by six 'x' marks.

66



A musical staff for guitar with a double bar line at the beginning. It contains four measures of music. The first three measures each have six 'x' marks above the staff. The fourth measure contains a 7th fret barre symbol followed by six 'x' marks.

70



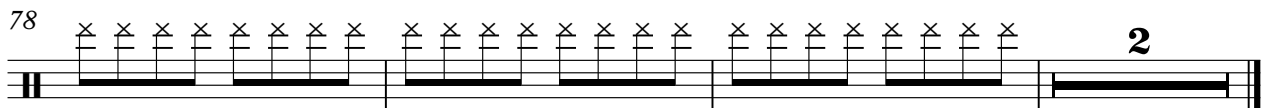
A musical staff for guitar with a double bar line at the beginning. It contains four measures of music. The first three measures each have six 'x' marks above the staff. The fourth measure contains a 7th fret barre symbol followed by six 'x' marks.

74



A musical staff for guitar with a double bar line at the beginning. It contains four measures of music. The first three measures each have six 'x' marks above the staff. The fourth measure contains a 7th fret barre symbol followed by six 'x' marks.

78



A musical staff for guitar with a double bar line at the beginning. It contains four measures of music. The first three measures each have six 'x' marks above the staff. The fourth measure contains a 7th fret barre symbol followed by six 'x' marks. A large number '2' is positioned at the end of the staff, indicating a second ending.

Ramsey Lewis - Hang On Sloopy

♩ = 120,000000

2 3 3

14 7 7 3

34 3 3 3 3

49 3 3 3

62 3 3 3

73 3 3

Ramsey Lewis - Hang On Sloopy

MIDI

♩ = 120,000000

4

8

12

16

20

24

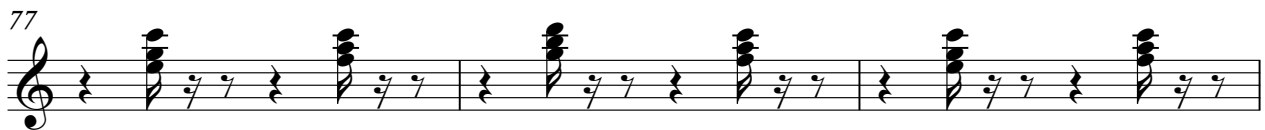
28

31

35

39

V.S.



80

Musical notation for guitar, starting at measure 80. It features a sequence of nine chords, each followed by a slash and a tilde (~), indicating a specific playing technique. The chords are: G major, F major, E major, D major, C major, B major, A major, G major, and F major. The notation ends with a double bar line.

♩ = 120,000000

4



8



12



16



20



24



28



32



36



40



44



48



52



56



60



64



68



72



76



79

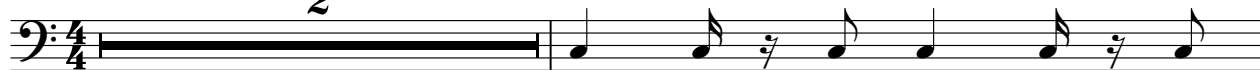


MIDI

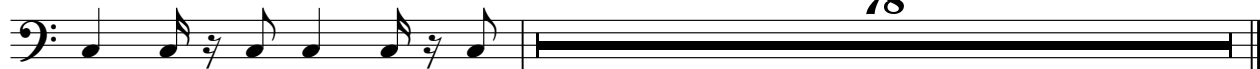
Ramsey Lewis - Hang On Sloopy

♩ = 120,000000

2



4



78

♩ = 120,000000

6 2

11 18

31 2

35 34

71 2

75 2

79