

RBD - Salvame

♩ = 100,000000 = 72,999985

tk10: Drum set notation in 4/4 time, showing a pattern of snare and bass drum hits.

tk2: Treble clef, 4/4 time. Melodic line with eighth and sixteenth notes, including a triplet.

tk3: Treble clef, 4/4 time. Rests.

tk4: Bass clef, 4/4 time. Rests.

tk1: Bass clef, 4/4 time. Bass line with quarter and eighth notes.

♩ = 100,000000 = 72,999985

5

tk10: Drum set notation in 4/4 time, showing a pattern of snare and bass drum hits.

tk2: Treble clef, 4/4 time. Melodic line with eighth and sixteenth notes, including a triplet.

tk4: Bass clef, 4/4 time. Bass line with quarter and eighth notes.

tk1: Bass clef, 4/4 time. Bass line with quarter and eighth notes.

Bad_Boy_531@hotmail.com

2

8

tk10

tk2

tk4

tk1

10

tk10

tk2

tk4

tk1

13

tk10

tk2

tk1

4

23

tk10

tk2

tk3

tk4

tk1

Detailed description: This musical score block covers measures 23 to 25. It features five tracks: tk10 (drums), tk2 (melodic line with eighth notes and a triplet), tk3 (chordal accompaniment with a triplet), tk4 (bass line with a triplet), and tk1 (pedal point). Measure 23 starts with a drum pattern and a melodic line. Measure 24 continues the melodic and bass lines, with a triplet in tk2 and tk4. Measure 25 features a triplet in tk2 and tk4, and a sustained chord in tk1.

25

tk10

tk2

tk3

tk4

tk1

Detailed description: This musical score block covers measures 25 to 27. It features five tracks: tk10 (drums), tk2 (melodic line with eighth notes and a triplet), tk3 (chordal accompaniment with a triplet), tk4 (bass line with a triplet), and tk1 (pedal point). Measure 25 starts with a drum pattern and a melodic line. Measure 26 continues the melodic and bass lines, with a triplet in tk2 and tk4. Measure 27 features a triplet in tk2 and tk4, and a sustained chord in tk1.

27

tk10

tk2

tk3

tk4

tk1

29

tk10

tk2

tk3

tk4

tk1

6

31

tk10

tk2

tk3

tk4

tk1

Detailed description: This musical score block covers measures 31 to 32. It features five tracks: tk10 (drums), tk2 (guitar), tk3 (guitar), tk4 (bass), and tk1 (bass). Measure 31 contains a complex guitar part with triplets and a drum part with various rhythmic patterns. Measure 32 continues the guitar and drum parts, with the bass line providing a steady accompaniment. The tk1 track shows a transition in bass line between the two measures.

33

tk10

tk2

tk3

tk4

tk1

Detailed description: This musical score block covers measures 33 to 34. It features five tracks: tk10 (drums), tk2 (guitar), tk3 (guitar), tk4 (bass), and tk1 (bass). Measure 33 continues the guitar and drum parts from the previous block, with the bass line providing a steady accompaniment. Measure 34 concludes the piece with a final chord in the guitar and bass tracks and a final drum hit.

35 7

tk10

tk2

tk3

tk4

tk1

37

tk10

tk2

tk3

tk4

tk1

8

39

tk10

tk2

tk3

tk4

tk1

40

tk10

tk2

tk3

tk4

tk1

41

tk10

tk2

tk3

tk4

tk1

Detailed description: This system of musical notation covers measures 41 and 42. It features five tracks: tk10 (drum), tk2 (treble clef), tk3 (treble clef), tk4 (bass clef), and tk1 (bass clef). Measure 41 includes a drum part with triplet patterns, a treble line with a sixteenth-note melody, a treble line with chords, and a bass line with a triplet. Measure 42 continues these patterns with more complex rhythmic figures and triplet markings. Track tk1 shows a long, sustained note with a tremolo effect.

42

tk10

tk2

tk3

tk4

tk1

Detailed description: This system of musical notation covers measures 43 and 44. It features five tracks: tk10 (drum), tk2 (treble clef), tk3 (treble clef), tk4 (bass clef), and tk1 (bass clef). Measure 43 includes a drum part with triplet patterns, a treble line with a sixteenth-note melody, a treble line with chords, and a bass line with a triplet. Measure 44 continues these patterns with more complex rhythmic figures and triplet markings. Track tk1 shows a long, sustained note with a tremolo effect.

10

44

tk10

tk2

tk3

tk4

tk1

Detailed description: This musical score block covers measures 44 to 45. It features five tracks: tk10 (drums), tk2 (melody), tk3 (chords), tk4 (bass), and tk1 (pedal point). tk10 has a consistent drum pattern with snare and hi-hat. tk2 plays a melodic line with eighth notes and includes a triplet of eighth notes. tk3 provides a harmonic accompaniment with chords, including a key signature change to one flat. tk4 has a bass line with a triplet of eighth notes. tk1 features a long, sustained note in the left hand.

46

tk10

tk2

tk3

tk4

tk1

Detailed description: This musical score block covers measures 46 to 47. It features the same five tracks as the previous block. tk10 continues the drum pattern. tk2 has a melodic line with a triplet of eighth notes. tk3 has a chordal accompaniment with a triplet of eighth notes. tk4 has a bass line with a triplet of eighth notes. tk1 features a long, sustained note in the left hand.

48

tk10

tk2

tk3

tk4

tk1

Detailed description: This system of musical notation covers measures 48 to 50. Track tk10 (drums) features a complex rhythmic pattern with eighth and sixteenth notes. Track tk2 (treble clef) has a melodic line with a triplet of eighth notes in measure 48. Track tk3 (treble clef) plays a series of chords, some with a slash indicating a specific voicing. Track tk4 (bass clef) has a bass line with a triplet of eighth notes in measure 49. Track tk1 (bass clef) provides a low-frequency accompaniment with a long note in measure 49.

50

tk10

tk2

tk3

tk4

tk1

Detailed description: This system of musical notation covers measures 50 to 52. Track tk10 (drums) continues with its rhythmic pattern. Track tk2 (treble clef) has a melodic line with a triplet of eighth notes in measure 50. Track tk3 (treble clef) plays a series of chords, some with a slash indicating a specific voicing. Track tk4 (bass clef) has a bass line with a triplet of eighth notes in measure 50 and a sixteenth note in measure 51. Track tk1 (bass clef) provides a low-frequency accompaniment with a long note in measure 50.

12

52

tk10

tk2

tk3

tk4

tk1

54

tk10

tk2

tk3

tk4

tk1

56

tk10

tk2

tk3

tk4

tk1

58

tk10

tk2

tk3

tk4

tk1

60

tk10

tk2

tk3

tk4

tk1

The image shows a musical score for five tracks, labeled tk10, tk2, tk3, tk4, and tk1. Track tk10 is a guitar track with a treble clef, a key signature of one sharp (F#), and a tempo marking of 60. It features a series of eighth notes with stems pointing down, followed by a rest. Track tk2 is a guitar track with a treble clef, a key signature of one sharp, and a 7/8 time signature. It starts with a chord, followed by a rest. Track tk3 is a guitar track with a treble clef, a key signature of one sharp, and a 7/8 time signature. It starts with a complex rhythmic pattern, followed by a rest. Track tk4 is a guitar track with a bass clef, a key signature of one sharp, and a 7/8 time signature. It starts with a long note, followed by a rest. Track tk1 is a guitar track with a bass clef, a key signature of one sharp, and a 7/8 time signature. It starts with a chord, followed by a rest.

♩ = 100,000002,999985

4 3

8 3

10

15

19 3 3

21 3 6 3

23

25 3

27 3 3 3

29 3

Bad_Boy_531@hotmail.com

V.S.

31

33

35

37

39

41

43

45

47

49

51

53

55

57

59

RBD - Salvame

tk2

$\text{♩} = 100,000000 = 72,999985$

5

8

11

14

17

20

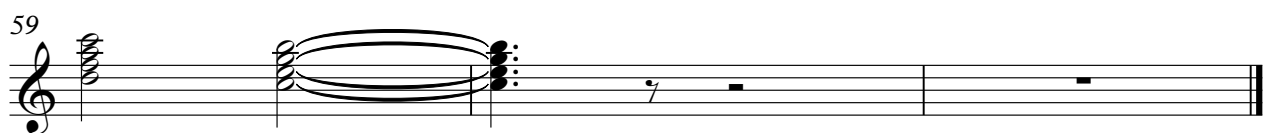
23

26

29

Bad_Boy_531@hotmail.com

V.S.



♩ = 100,000000 ♩ = 72,999985

17 4

25

28

31

34

37

39

41

44

47

2

tk3

50

53

56

59

♩ = 100,000000 ♩ = 72,999985

5

10

8

21

26

31

35

39

43

47

51

2

tk4

55



58



♩ = 100,000000,999985

9

16

22

29

35

40

47

54

58