

# Beatles - Can't buy me love

♩ = 168,000397  
PsmPlayer V3.80

Musical score for the first system of "Can't Buy Me Love". The score is in 4/4 time and includes the following parts:

- Percussion:** Indicated by a double bar line and a 4/4 time signature, with no notes.
- Jazz Guitar:** Treble clef, 4/4 time. Features a series of chords and some melodic lines.
- Electric Bass:** Bass clef, 4/4 time. Features a simple bass line.
- Tape Sampler Keyboard [Brass]:** Treble clef, 4/4 time. Features a melodic line.
- Lead 8 (Bass + Lead):** Treble clef, 4/4 time. Features a melodic line.

A tempo marking of  $\text{♩} = 168,000397$  is present below the Tape Sampler Keyboard part.

Musical score for the second system of "Can't Buy Me Love". The score includes the following parts:

- J. Gtr.:** Treble clef, 4/4 time. Features a complex melodic line with a triplet of eighth notes at the beginning.
- E. Bass:** Bass clef, 4/4 time. Features a simple bass line.
- Tape Smp. Brs:** Treble clef, 4/4 time. Features a melodic line.
- Lead 8:** Treble clef, 4/4 time. Features a melodic line.

6

Perc.

J. Gtr.

E. Bass

Tape Smp. Brs

Lead 8

9

Perc.

J. Gtr.

E. Bass

Tape Smp. Brs

12

Perc.

J. Gtr.

E. Bass

Tape Smp. Brs

15

Perc.

J. Gtr.

E. Bass

Tape Smp. Brs

18

Perc.

J. Gtr.

E. Bass

Tape Smp. Brs

21

Perc.

J. Gtr.

E. Bass

Tape Smp. Brs

24

Perc.

J. Gtr.

E. Bass

Tape Smp. Brs

Detailed description: This system contains measures 24, 25, and 26. The Percussion part features a consistent rhythmic pattern of eighth notes. The J. Gtr. part consists of a series of chords, some with slash marks indicating muted notes. The E. Bass part plays a simple eighth-note line. The Tape Smp. Brs part has a melodic line in the treble clef and rests in the bass clef.

27

Perc.

J. Gtr.

E. Bass

Tape Smp. Brs

Detailed description: This system contains measures 27, 28, and 29. The Percussion part continues with eighth notes, including some accented notes marked with an asterisk. The J. Gtr. part features more complex chordal textures with slash marks. The E. Bass part continues its eighth-note line. The Tape Smp. Brs part has a melodic line in the treble clef and some notes in the bass clef.

30

Perc.

J. Gtr.

E. Bass

Tape Smp. Brs

Lead 8

33

Perc.

J. Gtr.

E. Bass

Tape Smp. Brs

Lead 8

36

Perc.

J. Gtr.

E. Bass

Tape Smp. Brs

Lead 8

39

Perc.

J. Gtr.

E. Bass

Tape Smp. Brs

Lead 8

42

Perc.

J. Gtr.

E. Bass

Tape Smp. Brs

45

Perc.

J. Gtr.

E. Bass

Tape Smp. Brs



48

Perc. J. Gtr. E. Bass Tape Smp. Brs

This system contains measures 48, 49, and 50. The Percussion part features a consistent rhythmic pattern of eighth notes with accents. The J. Gtr. part consists of a series of chords, some with a flat sign. The E. Bass part has a simple eighth-note line. The Tape Smp. Brs part has a melodic line with some rests and a final note.

51

Perc. J. Gtr. E. Bass Tape Smp. Brs Lead 8

This system contains measures 51, 52, and 53. The Percussion part continues with the same eighth-note pattern. The J. Gtr. part has more complex chords, including some with a flat sign and a slash. The E. Bass part continues with eighth notes. The Tape Smp. Brs part is mostly silent with a few notes. The Lead 8 part has a melodic line with a slash and a final note.

54

Perc. J. Gtr. E. Bass Lead 8

This system contains measures 54 through 57. The Percussion part features a consistent rhythmic pattern of eighth notes. The J. Gtr. part consists of a series of chords, primarily triads and dyads, with some slash marks indicating muted notes. The E. Bass part provides a steady bass line with quarter notes. The Lead 8 part has a melodic line with eighth and quarter notes, including some rests.

56

Perc. J. Gtr. E. Bass Lead 8

This system contains measures 58 through 61. The Percussion part continues with the same eighth-note pattern. The J. Gtr. part shows more complex chordal textures, including some sixteenth-note chords. The E. Bass part remains a steady quarter-note bass line. The Lead 8 part features a melodic line with eighth notes and some chordal accompaniment.

59

Perc. J. Gtr. E. Bass Lead 8

This system contains measures 62 through 65. The Percussion part continues with the eighth-note pattern. The J. Gtr. part features a mix of chords, including some with sixteenth-note patterns. The E. Bass part continues with the quarter-note bass line. The Lead 8 part has a melodic line with eighth notes and some chordal accompaniment.

62

Perc.

J. Gtr.

E. Bass

Tape Smp. Brs

Lead 8

65

Perc.

J. Gtr.

E. Bass

Tape Smp. Brs

Lead 8

68

Perc.

J. Gtr.

E. Bass

Tape Smp. Brs

Lead 8

71

Perc.

J. Gtr.

E. Bass

Tape Smp. Brs

Lead 8

74

Perc.

J. Gtr.

E. Bass

Tape Smp. Brs.

77

Perc.

J. Gtr.

E. Bass

Tape Smp. Brs.

80

Perc. J. Gtr. E. Bass Tape Smp. Brs

This musical score covers measures 80, 81, and 82. The Percussion part features a steady eighth-note pattern with occasional accents. The J. Gtr. part consists of complex chordal textures with various accidentals and articulation marks. The E. Bass part provides a simple, rhythmic accompaniment. The Tape Smp. Brs part includes melodic lines with slurs and rests.

83

Perc. J. Gtr. E. Bass Tape Smp. Brs Lead 8

This musical score covers measures 83, 84, and 85. The Percussion part continues with its eighth-note pattern. The J. Gtr. part features dense chordal textures. The E. Bass part maintains a consistent rhythmic accompaniment. The Tape Smp. Brs part has a melodic line with slurs. The Lead 8 part is mostly silent, with some chordal textures appearing in the final measure.

86

Perc.

J. Gtr.

E. Bass

Tape Smp. Brs

Lead 8

89

Perc.

J. Gtr.

E. Bass

Tape Smp. Brs

Lead 8

91

Perc.

J. Gtr.

E. Bass

Tape Smp. Brs

Lead 8

Detailed description of the musical score for measures 91 and 92:

- Perc.**: Measure 91 features a snare drum on the first beat and a bass drum on the second beat. Measure 92 is a whole rest.
- J. Gtr.**: Measure 91 contains four chords: a triad, a dyad, a triad, and a dyad. Measure 92 contains a complex chord with a double bar line.
- E. Bass**: Measure 91 contains a melodic line with notes G2, F2, E2, D2, C2. Measure 92 is a whole rest.
- Tape Smp. Brs**: Measure 91 contains a melodic line with notes G4, F4, E4, D4, C4. Measure 92 is a whole rest.
- Lead 8**: Measure 91 contains a melodic line with notes G4, F4, E4, D4, C4. Measure 92 is a whole rest.



# Beatles - Can't buy me love

## Percussion

♩ = 168,000397  
PsmPlayer V3.80

5

10

15

20

25

30

35

40

45

50

V.S.

Percussion

55

60

65

70

75

80

85

89

♩ = 168,000397

5

9

12

15

19

22

25

28

32

36



40



44



47



51



55



58



61



65



69



The image displays ten staves of musical notation for a jazz guitar piece. Each staff begins with a measure number (36, 40, 44, 47, 51, 55, 58, 61, 65, 69) and contains a sequence of chords and melodic lines. The notation includes various chord symbols, such as triads and dyads, and uses a variety of rhythmic values including eighth and sixteenth notes. The key signature is one flat (B-flat), and the time signature is 4/4. The notation is presented in a clean, black-and-white format on a white background.

73

77

80

84

88

90



61



67



73



79



85



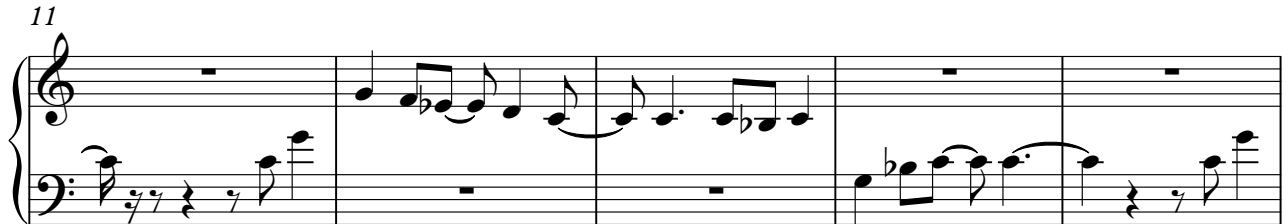
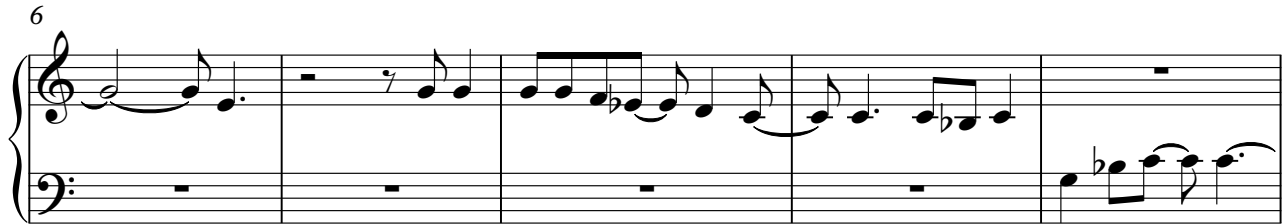
89



# Beatles - Can't buy me love

Tape Sampler Keyboard [Brass]

♩ = 168,000397



V.S.







Lead 8 (Bass + Lead) Beatles - Can't buy me love

♩ = 168,000397

7 23

34

40 12

55

59

63

68

73 11

88