

Sam The Sham & The Pharao`s - Wooly Bully

♩ = 128,000000

This system contains the first four staves of the score. The top staff is for Saxophone, the second for Drums, the third for Rhythm Guitar, and the fourth for Bass. The music is in 4/4 time. The saxophone part features a melodic line with eighth notes and rests. The drums play a steady backbeat. The rhythm guitar provides a chordal accompaniment with power chords. The bass line follows a simple eighth-note pattern.

4

This system contains the next four staves of the score, starting at measure 4. The instruments are Saxophone, Drums, Rhythm Guitar, Bass, and Organ-GM. The saxophone part continues with a more complex melodic line. The drums maintain the backbeat. The rhythm guitar plays a similar chordal accompaniment. The bass line continues with eighth notes. The Organ-GM part is a new addition, playing a rhythmic accompaniment of eighth notes.

6

Sax

Drums

Guitar, rhythm

Bass

Organ-GM

Detailed description: This musical score covers measures 6 and 7. The Saxophone part (treble clef) features a rhythmic melody with eighth and sixteenth notes, including a sharp sign on the second measure. The Drums part (drum clef) shows a consistent pattern of snare and bass drum hits. The Rhythm Guitar part (treble clef) plays a series of chords, with a sharp sign on the second measure. The Bass part (bass clef) provides a steady eighth-note accompaniment. The Organ-GM part (treble clef) plays a continuous eighth-note chordal accompaniment.

8

Sax

Drums

Guitar, rhythm

Bass

Organ-GM

Detailed description: This musical score covers measures 8, 9, 10, and 11. The Saxophone part (treble clef) continues its rhythmic melody. The Drums part (drum clef) maintains the same pattern. The Rhythm Guitar part (treble clef) plays chords, with a flat sign on the second measure of measure 8 and another flat sign on the second measure of measure 9. The Bass part (bass clef) continues with eighth notes. The Organ-GM part (treble clef) continues with eighth-note chords, with a flat sign appearing in the key signature at the start of measure 9.

10

Sax

Drums

Guitar, rhythm

Bass

Organ-GM

Detailed description: This system of music covers measures 10 through 13. The Saxophone part (treble clef) features a rhythmic melody with eighth notes and some accidentals. The Drums part (drum clef) shows a consistent pattern of snare and bass drum hits. The Rhythm Guitar part (treble clef) plays a series of chords, mostly triads. The Bass part (bass clef) provides a steady bass line with eighth notes and some chromatic movement. The Organ-GM part (treble clef) plays a continuous eighth-note accompaniment.

12

Sax

Drums

Guitar, rhythm

Bass

Organ-GM

Detailed description: This system of music covers measures 12 through 15. The Saxophone part continues its rhythmic melody. The Drums part maintains the same pattern. The Rhythm Guitar part shows a change in chord voicings, including a chord with a flat. The Bass part continues its steady eighth-note line. The Organ-GM part continues its eighth-note accompaniment.

14

Sax

Drums

Guitar, rhythm

Bass

Organ-GM

Detailed description: This musical score covers measures 14 through 17. The Saxophone part (treble clef) plays a rhythmic line of eighth notes: G4, A4, B4, C5, G4, A4, B4, C5, G4, A4, B4, C5, G4, A4, B4, C5. The Drums part (drum clef) features a consistent pattern of eighth notes: snare (x), bass drum (o), snare (x), bass drum (o), snare (x), bass drum (o), snare (x), bass drum (o). The Guitar (rhythm) part (treble clef) plays a series of chords: G4-B4, G4-B4, G4-B4, G4-B4, G4-B4, G4-B4, G4-B4, G4-B4. The Bass part (bass clef) plays a line of eighth notes: G3, A3, B3, C4, G3, A3, B3, C4, G3, A3, B3, C4, G3, A3, B3, C4. The Organ-GM part (treble clef) plays a series of chords: G4-B4, G4-B4, G4-B4, G4-B4, G4-B4, G4-B4, G4-B4, G4-B4.

16

Sax

Drums

Guitar, rhythm

Bass

Organ-GM

Detailed description: This musical score covers measures 16 through 19. The Saxophone part (treble clef) plays a rhythmic line of eighth notes: G4, A4, B4, C5, G4, A4, B4, C5, G4, A4, B4, C5, G4, A4, B4, C5. The Drums part (drum clef) features a consistent pattern of eighth notes: snare (x), bass drum (o), snare (x), bass drum (o), snare (x), bass drum (o), snare (x), bass drum (o). The Guitar (rhythm) part (treble clef) plays a series of chords: G4-B4, G4-B4, G4-B4, G4-B4, G4-B4, G4-B4, G4-B4, G4-B4. The Bass part (bass clef) plays a line of eighth notes: G3, A3, B3, C4, G3, A3, B3, C4, G3, A3, B3, C4, G3, A3, B3, C4. The Organ-GM part (treble clef) plays a series of chords: G4-B4, G4-B4, G4-B4, G4-B4, G4-B4, G4-B4, G4-B4, G4-B4.

18

Sax

Drums

Guitar, rhythm

Bass

Organ-GM

Detailed description: This block contains the musical notation for measures 18, 19, and 20. It features five staves: Saxophone (Sax), Drums, Rhythm Guitar (Guitar, rhythm), Bass, and Organ-GM. The Saxophone part consists of eighth-note patterns with various accidentals. The Drums part shows a consistent rhythmic pattern with 'x' marks for cymbals and dots for other drums. The Rhythm Guitar part features a series of chords, some with accidentals. The Bass part has a steady eighth-note line with some accidentals. The Organ-GM part plays a continuous eighth-note accompaniment with chords.

20

Sax

Drums

Guitar, rhythm

Bass

Organ-GM

Detailed description: This block contains the musical notation for measures 20, 21, 22, and 23. It features five staves: Saxophone (Sax), Drums, Rhythm Guitar (Guitar, rhythm), Bass, and Organ-GM. The Saxophone part continues with eighth-note patterns. The Drums part maintains the same rhythmic pattern. The Rhythm Guitar part continues with chords. The Bass part continues with eighth-note lines. The Organ-GM part continues with eighth-note accompaniment.

22

Sax

Drums

Guitar, rhythm

Bass

Organ-GM

Detailed description: This musical score covers measures 22 to 25. The Saxophone part (treble clef) features a rhythmic pattern of eighth notes with various accidentals. The Drums part (percussion clef) shows a consistent pattern of eighth notes. The Rhythm Guitar part (treble clef) consists of block chords, with a flat sign appearing in measure 24. The Bass part (bass clef) plays a steady eighth-note line. The Organ-GM part (treble clef) features a continuous eighth-note accompaniment.

24

Sax

Drums

Guitar, rhythm

Bass

Organ-GM

Detailed description: This musical score covers measures 24 to 27. The Saxophone part (treble clef) continues with its eighth-note rhythmic pattern. The Drums part (percussion clef) maintains the eighth-note pattern. The Rhythm Guitar part (treble clef) shows block chords, with a flat sign in measure 24 and a sharp sign in measure 27. The Bass part (bass clef) continues with its eighth-note line. The Organ-GM part (treble clef) continues with its eighth-note accompaniment.

26

Sax

Drums

Guitar, rhythm

Bass

Organ-GM

28

Sax

Drums

Guitar, rhythm

Bass

Organ-GM

30

Sax
Drums
Guitar, rhythm
Bass
Organ-GM

This musical score covers measures 30 and 31. The Saxophone part (treble clef) features a melodic line with eighth notes and rests. The Drums part (drum clef) shows a consistent rhythmic pattern with snare and bass drum hits. The Rhythm Guitar part (treble clef) plays a series of chords, some with rests. The Bass part (bass clef) provides a steady bass line with eighth notes. The Organ-GM part (treble clef) plays a rhythmic accompaniment with chords and eighth notes.

32

Sax
Drums
Guitar, rhythm
Bass
Organ-GM

This musical score covers measures 32 through 35. The Saxophone part continues with a melodic line. The Drums part maintains the same rhythmic pattern. The Rhythm Guitar part plays chords with rests. The Bass part continues with a steady bass line. The Organ-GM part plays a rhythmic accompaniment with chords and eighth notes.

34

Sax

Drums

Guitar, rhythm

Bass

Organ-GM

36

Sax

Drums

Guitar, rhythm

Bass

Organ-GM

38

Sax

Drums

Guitar, rhythm

Bass

Organ-GM

40

Sax

Drums

Guitar, rhythm

Bass

Organ-GM

42

Sax
Drums
Guitar, rhythm
Bass
Organ-GM

This musical score block covers measures 42 and 43. It features five staves: Saxophone (treble clef), Drums (percussion clef), Rhythm Guitar (treble clef), Bass (bass clef), and Organ-GM (treble clef). The Saxophone part consists of eighth-note patterns with some accidentals. The Drums part shows a consistent rhythmic pattern with 'x' marks for cymbals. The Rhythm Guitar part uses chords and rests. The Bass part has a steady eighth-note line. The Organ-GM part features a complex, repetitive eighth-note pattern.

44

Sax
Drums
Guitar, rhythm
Bass
Organ-GM

This musical score block covers measures 44 and 45. It features the same five staves as the previous block. In measure 44, the Saxophone continues with eighth-note patterns. In measure 45, the Saxophone part changes to a more melodic line with some rests. The Drums part continues with its rhythmic pattern. The Rhythm Guitar part has chords and rests. The Bass part has eighth-note lines. The Organ-GM part has a complex eighth-note pattern.

47

Sax

Drums

Guitar, rhythm

Bass

Organ-GM

50

Sax

Drums

Guitar, rhythm

Bass

Organ-GM

52

Sax

Drums

Guitar, rhythm

Bass

Organ-GM

Detailed description: This block contains the musical notation for measures 52 and 53. The score is arranged in five staves. The Saxophone staff (top) features a melodic line with eighth and sixteenth notes, including a triplet in measure 53. The Drums staff shows a consistent rhythmic pattern with 'x' marks for cymbals and vertical lines for the drum kit. The Guitar, rhythm staff uses a treble clef and contains block chords, some with a flat sign. The Bass staff uses a bass clef and plays a steady eighth-note line. The Organ-GM staff uses a grand staff and plays a rhythmic accompaniment of eighth-note chords.

53

Sax

Drums

Guitar, rhythm

Bass

Organ-GM

Detailed description: This block contains the musical notation for measures 53 and 54. The Saxophone staff continues the melodic line from measure 52, ending with a triplet in measure 54. The Drums staff maintains the same rhythmic pattern. The Guitar, rhythm staff continues with block chords, some with a flat sign. The Bass staff continues with a steady eighth-note line. The Organ-GM staff continues with a rhythmic accompaniment of eighth-note chords.

55

Sax

Drums

Guitar, rhythm

Bass

Organ-GM

57

Sax

Drums

Guitar, rhythm

Bass

Organ-GM

59

Sax

Drums

Guitar, rhythm

Bass

Organ-GM

Detailed description: This block contains the musical notation for measures 59 and 60. It features five staves: Saxophone (Sax), Drums, Rhythm Guitar (Guitar, rhythm), Bass, and Organ-GM. The Saxophone part consists of eighth notes with accents. The Drums part shows a consistent rhythmic pattern with 'x' marks for cymbals. The Rhythm Guitar part features block chords. The Bass part has a simple eighth-note line. The Organ-GM part plays a steady eighth-note accompaniment.

60

Sax

Drums

Guitar, rhythm

Bass

Organ-GM

Detailed description: This block contains the musical notation for measures 61 through 64. It features the same five staves as the previous block. The Saxophone part continues with eighth notes and includes a key signature change to B-flat major in measure 62. The Drums part maintains the same rhythmic pattern. The Rhythm Guitar part continues with block chords. The Bass part continues with eighth notes. The Organ-GM part continues with eighth-note accompaniment.

62

Sax

Drums

Guitar, rhythm

Bass

Organ-GM

Detailed description: This musical score covers measures 62 to 65. The Saxophone part (treble clef) features a rhythmic melody with eighth notes and rests. The Drums part (drum set notation) provides a steady backbeat. The Rhythm Guitar part (treble clef) plays a series of chords, primarily triads. The Bass part (bass clef) follows a simple eighth-note line. The Organ-GM part (treble clef) plays a continuous eighth-note accompaniment.

64

Sax

Drums

Guitar, rhythm

Bass

Organ-GM

Detailed description: This musical score covers measures 64 to 67. The instrumentation and parts are identical to the previous system. The Saxophone part continues its rhythmic melody. The Drums part maintains the backbeat. The Rhythm Guitar part continues with its chordal accompaniment. The Bass part continues its eighth-note line. The Organ-GM part continues its eighth-note accompaniment.

66

Sax

Drums

Guitar, rhythm

Bass

Organ-GM

Detailed description: This musical score covers measures 66 to 69. The Saxophone part (treble clef) features a rhythmic melody with eighth notes and rests. The Drums part (drum clef) shows a consistent pattern of snare and bass drum hits. The Rhythm Guitar part (treble clef) plays a series of chords, primarily triads. The Bass part (bass clef) provides a steady eighth-note accompaniment. The Organ-GM part (treble clef) plays a continuous eighth-note accompaniment.

68

Sax

Drums

Guitar, rhythm

Bass

Organ-GM

Detailed description: This musical score covers measures 68 to 71. The Saxophone part (treble clef) continues with a rhythmic melody. The Drums part (drum clef) maintains the same pattern. The Rhythm Guitar part (treble clef) includes a flat symbol (b) above some chords. The Bass part (bass clef) continues with eighth notes. The Organ-GM part (treble clef) continues with eighth notes, and a flat symbol (b) is visible in the key signature area.

70

Sax
Drums
Guitar, rhythm
Bass
Organ-GM

Detailed description: This system of music covers measures 70 through 73. The Saxophone part (treble clef) features a rhythmic melody with eighth notes and some accidentals. The Drums part (drum clef) shows a consistent pattern of snare and bass drum hits. The Rhythm Guitar part (treble clef) consists of block chords, some with a flat sign. The Bass part (bass clef) plays a steady eighth-note line. The Organ-GM part (treble clef) provides a harmonic accompaniment with chords and eighth notes.

72

Sax
Drums
Guitar, rhythm
Bass
Organ-GM

Detailed description: This system of music covers measures 74 through 77. The Saxophone part continues its rhythmic melody. The Drums part maintains the same pattern. The Rhythm Guitar part shows a change in chord voicing, including a flat sign. The Bass part continues its eighth-note line. The Organ-GM part continues its accompaniment, with a key signature change to one flat indicated by a flat sign on the staff.

74

Sax
Drums
Guitar, rhythm
Bass
Organ-GM

Detailed description: This block contains the musical notation for measures 74, 75, and 76. The score is arranged in five staves. The Saxophone staff (top) uses a treble clef and contains eighth-note patterns. The Drums staff uses a double bar line and contains 'x' marks for snare and cymbal hits. The Guitar, rhythm staff uses a treble clef and contains chordal accompaniment. The Bass staff uses a bass clef and contains a walking bass line. The Organ-GM staff uses a treble clef and contains a rhythmic accompaniment of eighth notes. The measure numbers 74, 75, and 76 are indicated at the beginning of their respective staves.

76

Sax
Drums
Guitar, rhythm
Bass

Detailed description: This block contains the musical notation for measures 76, 77, and 78. The score is arranged in four staves. The Saxophone staff (top) uses a treble clef and contains a melodic line. The Drums staff uses a double bar line and contains a pattern of snare and cymbal hits. The Guitar, rhythm staff uses a treble clef and contains chordal accompaniment. The Bass staff uses a bass clef and contains a walking bass line. The measure numbers 76, 77, and 78 are indicated at the beginning of their respective staves.

Sam The Sham & The Pharao`s - Wooly Bully

Sax

♩ = 128,000000



V.S.

Musical score for Saxophone, measures 42-75. The score is written in treble clef with a key signature of two sharps (F# and C#). The music consists of ten staves of notation. Measure 46 features a triplet of eighth notes. The piece concludes with a double bar line at the end of measure 75.

42

46 **3**

52

55

58

60

64

68

72

75

Sam The Sham & The Pharaoh's - Woolly Bully

Drums

♩ = 128,000000

6

10

14

18

22

26

30

34

38

V.S.

Drums

42

46

51

55

59

63

67

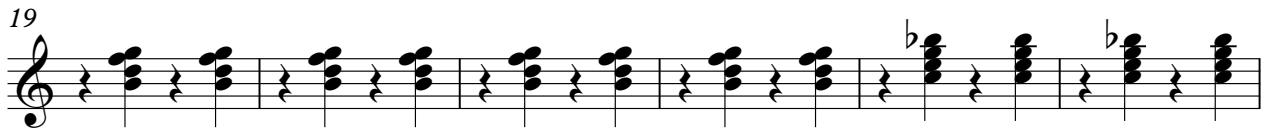
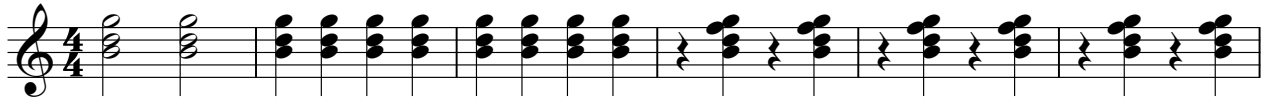
71

75

Sam The Sham & The Pharao`s - Wooly Bully

Guitar, rhythm

♩ = 128,000000



V.S.

41



45



49



53



57



61



65



69



73



76



♩ = 128,000000

3

6

8

10

12

14

16

18

20

22



44 3

49

51

53

55

57

59

61

63

65

67



69



71



73



75

