

♩ = 105,000107

Harmonica

Baroque Trumpet

Trombone

Tuba

Percussion

Acoustic Bass

Fretless Electric Bass

SEEMANNM

Quintus

Tape Sampler Keyboard [Brass]

♩ = 105,000107

FX 5 (Brightness)

4

Bar. Tpt.  
Tbn.  
Perc.  
A. Bass  
E. Bass  
Q.  
FX 5

Detailed description: This system contains measures 4, 5, and 6. The Baritone Trumpet (Bar. Tpt.) part features a melodic line with eighth and sixteenth notes, including a triplet in measure 5. The Trombone (Tbn.) part has a similar melodic line. The Percussion (Perc.) part consists of a steady eighth-note pattern with 'x' marks above the notes, and a snare drum pattern in measures 5 and 6. The Alto Bass (A. Bass) and Electric Bass (E. Bass) parts play a simple bass line of quarter notes. The Trumpet (Q.) part has a sustained chord in measure 4, which is tied through measures 5 and 6. The FX 5 part has a melodic line with eighth notes and rests.



7

Bar. Tpt.  
Tbn.  
Tba.  
Perc.  
A. Bass  
E. Bass  
Q.

Detailed description: This system contains measures 7, 8, and 9. The Baritone Trumpet (Bar. Tpt.) part has a melodic line with eighth notes and rests. The Trombone (Tbn.) part has a melodic line with eighth notes and rests. The Trombone (Tba.) part has a melodic line with eighth notes and rests. The Percussion (Perc.) part has a snare drum pattern in measure 7, followed by a steady eighth-note pattern with 'x' marks above the notes in measures 8 and 9. The Alto Bass (A. Bass) and Electric Bass (E. Bass) parts play a simple bass line of quarter notes. The Trumpet (Q.) part has a sustained chord in measure 7, which is tied through measures 8 and 9.

10

Bar. Tpt.

Perc.

A. Bass

E. Bass

Q.

Tape Smp. Brs

Detailed description: This system contains measures 10 and 11. The Baritone Trumpet (Bar. Tpt.) part features eighth-note patterns with rests. The Percussion (Perc.) part has a consistent eighth-note rhythmic pattern. The Alto Bass (A. Bass) and Electric Bass (E. Bass) parts play a simple eighth-note line. The Saxophone (Q.) part has a melodic line with a long note in measure 11. The Tape Samples (Tape Smp. Brs) part has a few notes in measures 10 and 11.



12

Bar. Tpt.

Perc.

A. Bass

E. Bass

Q.

Tape Smp. Brs

Detailed description: This system contains measures 12 and 13. The Baritone Trumpet (Bar. Tpt.) part continues with eighth-note patterns. The Percussion (Perc.) part maintains the eighth-note pattern. The Alto Bass (A. Bass) and Electric Bass (E. Bass) parts continue with the eighth-note line. The Saxophone (Q.) part has a melodic line with a long note in measure 13. The Tape Samples (Tape Smp. Brs) part has a few notes in measures 12 and 13.

14

Bar. Tpt.  
Perc.  
A. Bass  
E. Bass  
Q.  
Tape Smp. Brs

Detailed description: This system contains measures 14 and 15. The Baritone Trumpet (Bar. Tpt.) part features complex rhythmic patterns with eighth and sixteenth notes. The Percussion (Perc.) part has a steady eighth-note accompaniment. The Alto Bass (A. Bass) and Electric Bass (E. Bass) parts play a simple, steady eighth-note line. The Trombone (Q.) part has a long, sustained note in the first measure, followed by a melodic line. The Tape Samples (Tape Smp. Brs) part has a few scattered notes.



16

Bar. Tpt.  
Tba.  
Perc.  
A. Bass  
E. Bass  
Q.  
Tape Smp. Brs

Detailed description: This system contains measures 16 and 17. The Baritone Trumpet (Bar. Tpt.) part has a melodic line with some rests. The Trombone (Tba.) part has a similar melodic line. The Percussion (Perc.) part continues with its eighth-note accompaniment. The Alto Bass (A. Bass) and Electric Bass (E. Bass) parts play a steady eighth-note line. The Trombone (Q.) part has a long, sustained note in the first measure, followed by a melodic line. The Tape Samples (Tape Smp. Brs) part has a few scattered notes.

18

Bar. Tpt.  
Tbn.  
Perc.  
A. Bass  
E. Bass  
Q.

Detailed description: This system contains measures 18 and 19. The Baritone Trumpet (Bar. Tpt.) part features a melodic line with eighth and sixteenth notes. The Trombone (Tbn.) part provides harmonic support with chords and eighth notes. The Percussion (Perc.) part has a steady eighth-note pattern. The Alto Bass (A. Bass) and Electric Bass (E. Bass) parts play simple quarter notes. The Guitar (Q.) part has a few chords and a short melodic phrase.



20

Bar. Tpt.  
Tbn.  
Perc.  
A. Bass  
E. Bass  
Q.  
FX 5

Detailed description: This system contains measures 20 and 21. The Baritone Trumpet (Bar. Tpt.) part has a melodic line with some rests. The Trombone (Tbn.) part has rests. The Percussion (Perc.) part has a complex pattern of eighth notes with 'x' marks above them. The Alto Bass (A. Bass) and Electric Bass (E. Bass) parts play quarter notes. The Guitar (Q.) part has a long sustained chord. The FX 5 part has a melodic line with some rests.

22

Bar. Tpt.  
Tbn.  
Perc.  
A. Bass  
E. Bass  
Q.

Detailed description: This musical score covers measures 22 and 23. The Baritone Trumpet (Bar. Tpt.) part features a melodic line with eighth and sixteenth notes, including some grace notes. The Trombone (Tbn.) part provides harmonic support with chords and some melodic fragments. The Percussion (Perc.) part has a consistent rhythmic pattern of eighth notes. The Alto Bass (A. Bass) and Electric Bass (E. Bass) parts play simple, steady quarter notes. The Piano (Q.) part provides a harmonic accompaniment with chords.



24

Bar. Tpt.  
Tbn.  
Tba.  
Perc.  
A. Bass  
E. Bass  
Q.

Detailed description: This musical score covers measures 24 and 25. The Baritone Trumpet (Bar. Tpt.) part has a melodic line that becomes more active in measure 25. The Trombone (Tbn.) and Trombone Alto (Tba.) parts have rests in measure 24 and enter in measure 25 with melodic lines. The Percussion (Perc.) part continues with a rhythmic pattern, including some cross-sticks in measure 25. The Alto Bass (A. Bass) and Electric Bass (E. Bass) parts play quarter notes in measure 24 and eighth notes in measure 25. The Piano (Q.) part provides harmonic accompaniment with chords and some melodic fragments.

26

Bar. Tpt.

Perc.

A. Bass

E. Bass

Q.

Tape Smp. Brs



28

Bar. Tpt.

Perc.

A. Bass

E. Bass

Q.

Tape Smp. Brs

30

Bar. Tpt.

Perc.

A. Bass

E. Bass

Q.

Tape Smp. Brs

Detailed description: This musical system covers measures 30 and 31. The Baritone Trumpet (Bar. Tpt.) part features a melodic line with eighth and sixteenth notes, including some triplets. The Percussion (Perc.) part consists of a steady eighth-note pattern. The Alto Bass (A. Bass) and Electric Bass (E. Bass) parts play a similar eighth-note line. The Trombone (Q.) part has a long, sustained note in the first measure, followed by a melodic phrase. The Tape Samples (Tape Smp. Brs) part has a few scattered notes.



32

Bar. Tpt.

Tba.

Perc.

A. Bass

E. Bass

Q.

Tape Smp. Brs

Detailed description: This musical system covers measures 32 and 33. The Baritone Trumpet (Bar. Tpt.) part continues with a melodic line. The Trombone (Tba.) part has a melodic line with some chromatic movement. The Percussion (Perc.) part remains a steady eighth-note pattern. The Alto Bass (A. Bass) and Electric Bass (E. Bass) parts play a similar eighth-note line. The Trombone (Q.) part has a long, sustained note in the first measure, followed by a melodic phrase. The Tape Samples (Tape Smp. Brs) part has a few scattered notes.



34

Bar. Tpt.

Perc.

A. Bass

E. Bass

Q.

Tape Smp. Brs



36

Bar. Tpt.

Perc.

A. Bass

E. Bass

Q.

Tape Smp. Brs

38

Bar. Tpt.

Perc.

A. Bass

E. Bass

Q.

Tape Smp. Brs



40

Bar. Tpt.

Tba.

Perc.

A. Bass

E. Bass

Q.

Tape Smp. Brs

42

Tbn.

Tba.

Perc.

A. Bass

E. Bass

Tape Smp. Brs

Detailed description: This block contains the musical notation for measures 42 and 43. It features six staves: Tbn. (Tuba), Tba. (Tuba), Perc. (Percussion), A. Bass (Alto Bass), E. Bass (Electric Bass), and Tape Smp. Brs (Tape Sampler Brass). The Tbn. and Tba. parts consist of chords and rhythmic patterns. The Perc. part has a complex, syncopated rhythm. The A. Bass and E. Bass parts have a steady, rhythmic accompaniment. The Tape Smp. Brs part features a melodic line with chords.



44

Tbn.

Tba.

Perc.

A. Bass

E. Bass

Tape Smp. Brs

Detailed description: This block contains the musical notation for measures 44 and 45. It features the same six staves as the previous block. The Tbn. and Tba. parts continue with their respective rhythmic and chordal patterns. The Perc. part maintains its complex rhythm. The A. Bass and E. Bass parts provide a consistent bass line. The Tape Smp. Brs part continues its melodic and harmonic contribution.

46

Bar. Tpt.  
Tbn.  
Tba.  
Perc.  
A. Bass  
E. Bass  
Tape Smp. Brs

This musical score block covers measures 46 and 47. It features seven staves: Baritone Trumpet (Bar. Tpt.) in treble clef with a key signature of one sharp; Trombone (Tbn.) in bass clef; Tuba (Tba.) in bass clef; Percussion (Perc.) in a standard drum set notation; Alto Bass (A. Bass) in bass clef; Electric Bass (E. Bass) in bass clef; and Tape Samples (Tape Smp. Brs) in treble clef. The music is in 4/4 time. Measures 46 and 47 are separated by a double bar line. The percussion part includes a snare drum pattern with eighth notes and a hi-hat pattern. The brass parts feature eighth and sixteenth notes, while the bass parts play a steady eighth-note line.



48

Bar. Tpt.  
Tbn.  
Tba.  
Perc.  
A. Bass  
E. Bass  
Tape Smp. Brs

This musical score block covers measures 48 and 49. It features the same seven staves as the previous block. Measures 48 and 49 are separated by a double bar line. The musical notation continues with similar patterns for all instruments, including the brass, percussion, and bass lines.

50

Bar. Tpt.

Tbn.

Tba.

Perc.

A. Bass

E. Bass

Q.

Tape Smp. Brs

Detailed description: This is a page of a musical score, page 13, starting at measure 50. The score is arranged in a vertical stack of staves. The top staff is for Baritone Trumpet (Bar. Tpt.) in G major, featuring a melodic line with eighth and sixteenth notes. The second staff is for Tenor Trombone (Tbn.) with a similar melodic line. The third staff is for Bass Trombone (Tba.) with a rhythmic pattern of eighth notes. The fourth staff is for Percussion (Perc.) with a complex rhythmic pattern. The fifth and sixth staves are for Alto Bass (A. Bass) and Electric Bass (E. Bass), both playing a simple bass line. The seventh staff is for Quads (Q.) with sustained chords. The eighth staff is for Tape Samples (Tape Smp. Brs) with a rhythmic pattern.

52

Bar. Tpt.  
Tbn.  
Tba.  
Perc.  
A. Bass  
E. Bass  
Q.  
Tape Smp. Brs

Detailed description: This block contains the musical score for measures 52 and 53. It features seven staves: Baritone Trumpet (Bar. Tpt.) in treble clef, Trombone (Tbn.) in bass clef, Tuba (Tba.) in bass clef, Percussion (Perc.) in a standard percussion clef, Alto Bass (A. Bass) in bass clef, Electric Bass (E. Bass) in bass clef, and a string quartet (Q.) in treble clef. The Tape Samples Brass (Tape Smp. Brs) part is on a separate staff in treble clef. The music is in 4/4 time. Measure 52 shows a complex brass arrangement with eighth and sixteenth notes. Measure 53 continues the pattern with some rests and dynamic markings.



54

Bar. Tpt.  
Tbn.  
Tba.  
Perc.  
A. Bass  
E. Bass  
Tape Smp. Brs

Detailed description: This block contains the musical score for measures 54 and 55. It features six staves: Baritone Trumpet (Bar. Tpt.) in treble clef, Trombone (Tbn.) in bass clef, Tuba (Tba.) in bass clef, Percussion (Perc.) in a standard percussion clef, Alto Bass (A. Bass) in bass clef, and Electric Bass (E. Bass) in bass clef. The Tape Samples Brass (Tape Smp. Brs) part is on a separate staff in treble clef. The music is in 4/4 time. Measure 54 shows a complex brass arrangement with eighth and sixteenth notes. Measure 55 continues the pattern with some rests and dynamic markings.

56

Bar. Tpt.  
Tbn.  
Tba.  
Perc.  
A. Bass  
E. Bass  
Tape Smp. Brs

Detailed description: This block contains the musical notation for measures 56 and 57. It features seven staves: Baritone Trumpet (Bar. Tpt.), Trombone (Tbn.), Tuba (Tba.), Percussion (Perc.), Alto Bass (A. Bass), Electric Bass (E. Bass), and Tape Samples (Tape Smp. Brs). The Bar. Tpt. staff has a treble clef and a key signature of one flat. The Tbn. and Tba. staves have bass clefs. The Perc. staff uses a drum set icon. The A. Bass and E. Bass staves have bass clefs. The Tape Smp. Brs staff has a treble clef. The music includes various rhythmic patterns, including eighth and sixteenth notes, and rests.



58

Bar. Tpt.  
Tbn.  
Tba.  
Perc.  
A. Bass  
E. Bass  
Q.  
Tape Smp. Brs

Detailed description: This block contains the musical notation for measures 58 and 59. It features eight staves: Baritone Trumpet (Bar. Tpt.), Trombone (Tbn.), Tuba (Tba.), Percussion (Perc.), Alto Bass (A. Bass), Electric Bass (E. Bass), a new staff labeled 'Q.', and Tape Samples (Tape Smp. Brs). The Bar. Tpt. staff has a treble clef and a key signature of one flat. The Tbn. and Tba. staves have bass clefs. The Perc. staff uses a drum set icon. The A. Bass and E. Bass staves have bass clefs. The 'Q.' staff has a treble clef and contains a whole rest in measure 58 and a chord in measure 59. The Tape Smp. Brs staff has a treble clef. The music includes various rhythmic patterns, including eighth and sixteenth notes, and rests.

60

Bar. Tpt.

Tbn.

Tba.

Perc.

A. Bass

E. Bass

Q.

Tape Smp. Brs



62

Bar. Tpt.

Tbn.

Tba.

Perc.

A. Bass

E. Bass

Q.

Tape Smp. Brs



64

Harm.

Tbn.

Perc.



67

Harm.

Perc.

70

Harm.

Perc.

FX 5



73

Bar. Tpt.

Tba.

Perc.

A. Bass

E. Bass

Tape Smp. Brs

FX 5

75

Harm.

Bar. Tpt.

Tba.

Perc.

A. Bass

E. Bass

Tape Smp. Brs

FX 5

77

Bar. Tpt.

Tba.

Perc.

A. Bass

E. Bass

Tape Smp. Brs

FX 5

79

Bar. Tpt.

Tba.

Perc.

A. Bass

E. Bass

Q.

Tape Smp. Brs

FX 5

81

Bar. Tpt.

Tba.

Perc.

A. Bass

E. Bass

Q.

Tape Smp. Brs

83

Bar. Tpt.

Tba.

Perc.

A. Bass

E. Bass

Q.

Tape Smp. Brs

FX 5

85

Bar. Tpt.

Tba.

Perc.

A. Bass

E. Bass

Q.

Tape Smp. Brs

83

85

3

87

Bar. Tpt.  
Tba.  
Perc.  
A. Bass  
E. Bass  
Q.  
Tape Smp. Brs

Detailed description: This block contains the musical score for measures 87 and 88. The score is arranged in a grand staff with seven staves. The Baritone Trumpet (Bar. Tpt.) and Trombone (Tba.) parts feature eighth-note patterns. The Percussion (Perc.) part has a consistent eighth-note accompaniment. The Alto Bass (A. Bass) and Electric Bass (E. Bass) parts play a steady bass line. The Quintet (Q.) part features chords and a triplet in measure 88. The Tape Sample Brass (Tape Smp. Brs) part has a few notes at the beginning of measure 87.



89

Bar. Tpt.  
Tba.  
Perc.  
A. Bass  
E. Bass  
Q.  
Tape Smp. Brs

Detailed description: This block contains the musical score for measures 89 and 90. The Baritone Trumpet (Bar. Tpt.) and Trombone (Tba.) parts continue with eighth-note patterns. The Percussion (Perc.) part has a consistent eighth-note accompaniment. The Alto Bass (A. Bass) and Electric Bass (E. Bass) parts play a steady bass line. The Quintet (Q.) part features chords and a triplet in measure 90. The Tape Sample Brass (Tape Smp. Brs) part has a few notes at the end of measure 90.

91

Bar. Tpt.  
Tba.  
Perc.  
A. Bass  
E. Bass  
Q.  
Tape Smp. Brs

Detailed description: This system contains measures 91 and 92. The Baritone Trumpet (Bar. Tpt.) and Trombone (Tba.) parts feature melodic lines with various accidentals. The Percussion (Perc.) part has a steady eighth-note pattern. The Alto Bass (A. Bass) and Electric Bass (E. Bass) parts play a simple harmonic line. The Quintet (Q.) part has block chords. The Tape Sample Brass (Tape Smp. Brs) part has a short sample at the end of measure 92.



93

Bar. Tpt.  
Tba.  
Perc.  
A. Bass  
E. Bass  
Q.  
Tape Smp. Brs

Detailed description: This system contains measures 93 and 94. The Baritone Trumpet (Bar. Tpt.) and Trombone (Tba.) parts continue their melodic lines. The Percussion (Perc.) part has a steady eighth-note pattern. The Alto Bass (A. Bass) and Electric Bass (E. Bass) parts play a simple harmonic line. The Quintet (Q.) part has block chords, with a triplet of eighth notes in measure 94. The Tape Sample Brass (Tape Smp. Brs) part has a short sample at the end of measure 94.

95

Bar. Tpt.  
Tba.  
Perc.  
A. Bass  
E. Bass  
Q.  
Tape Smp. Brs

Detailed description: This musical score covers measures 95 and 96. The Baritone Trumpet (Bar. Tpt.) part features a melodic line with a triplet in measure 96. The Trombone (Tba.) part has a rhythmic pattern of eighth notes. The Percussion (Perc.) part consists of a steady eighth-note pattern with accents. The Alto Bass (A. Bass) and Electric Bass (E. Bass) parts play a simple harmonic line. The Quintet (Q.) part provides harmonic support with chords and a melodic line. The Tape Samples Brass (Tape Smp. Brs) part has a few notes in measure 95 and is silent in measure 96.



97

Bar. Tpt.  
Tba.  
Perc.  
A. Bass  
Q.  
Tape Smp. Brs

Detailed description: This musical score covers measures 97 and 98. The Baritone Trumpet (Bar. Tpt.) part continues with a melodic line, featuring triplets in both measures. The Trombone (Tba.) part maintains its rhythmic eighth-note pattern. The Percussion (Perc.) part continues with the eighth-note pattern and accents. The Alto Bass (A. Bass) and Electric Bass (E. Bass) parts play a simple harmonic line. The Quintet (Q.) part provides harmonic support with chords and a melodic line. The Tape Samples Brass (Tape Smp. Brs) part has a few notes in measure 98.



99 ♩ = 70,000069

Bar. Tpt.

Tba.

Perc.

A. Bass

Q.

Tape Smp. Brs



100

Bar. Tpt.

Tba.

Perc.

A. Bass

Q.

Tape Smp. Brs

101

Bar. Tpt.

Tba.

Perc.

A. Bass

E. Bass

Q.

Tape Smp. Brs

Detailed description of the musical score: The score is for measures 101 and 102. The instruments are arranged vertically from top to bottom: Baritone Trumpet (Bar. Tpt.), Trombone (Tba.), Percussion (Perc.), Alto Bass (A. Bass), Electric Bass (E. Bass), Clarinet (Q.), and Tape Samples (Tape Smp. Brs). The Bar. Tpt., Tba., E. Bass, Q., and Tape Smp. Brs staves contain whole rests in both measures. The Perc. staff has a half note in measure 101 and a whole note in measure 102. The A. Bass staff has a rhythmic pattern in measure 101 consisting of eighth notes: G2 (quarter), A2 (quarter), B2 (quarter), C3 (quarter), D3 (quarter), E3 (quarter), F3 (quarter), G3 (quarter), followed by a whole rest in measure 102.

# Harmonica

♩ = 105,000107

**63**



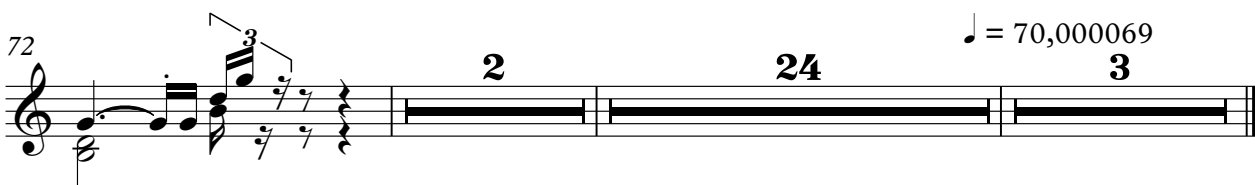
67



72

♩ = 70,000069

**2**      **24**      **3**



# Baroque Trumpet

♩ = 105,000107



V.S.

34

37

39

46

49

52

56

60

73

77

81

84

87

91

94

97

♩ = 70,000069

# Trombone

♩ = 105,000107

First staff of music, bass clef. It begins with a whole rest in the first measure, followed by eighth-note chords in the subsequent measures.

Second staff of music, bass clef, starting at measure 6. It continues with eighth-note chords and concludes with an 8-measure rest.

Third staff of music, bass clef, starting at measure 18. It continues with eighth-note chords.

Fourth staff of music, bass clef, starting at measure 23. It continues with eighth-note chords and concludes with an 16-measure rest.

Fifth staff of music, bass clef, starting at measure 43. It features sixteenth-note chords.

Sixth staff of music, bass clef, starting at measure 47. It features sixteenth-note chords.

Seventh staff of music, bass clef, starting at measure 50. It features sixteenth-note chords.

Eighth staff of music, bass clef, starting at measure 53. It features sixteenth-note chords.

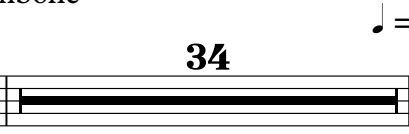
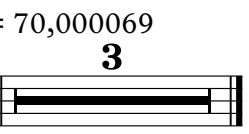
Ninth staff of music, bass clef, starting at measure 56. It features sixteenth-note chords.

Tenth staff of music, bass clef, starting at measure 59. It features sixteenth-note chords.

V.S.

2

Trombone

62  $\flat$    $\flat$   **2**  **34**  **3**  $\text{♩} = 70,000069$



# Tuba

♩ = 105,000107

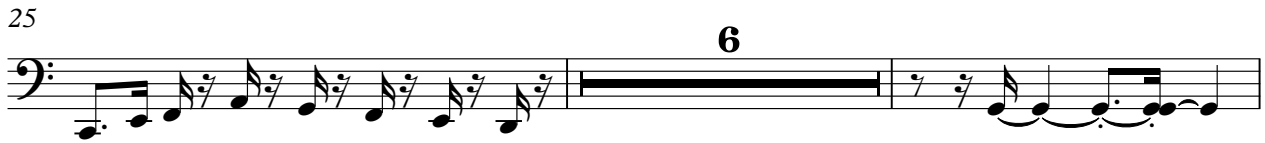
8 6



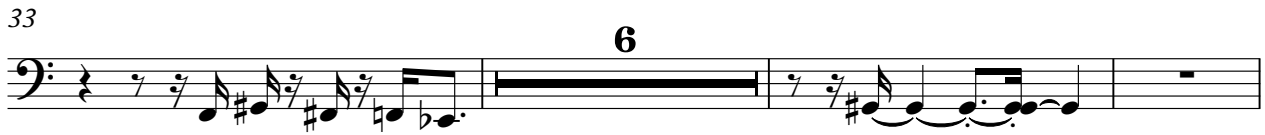
16 7



25 6



33 6



42



44



46



48



50



52



V.S.

54



56



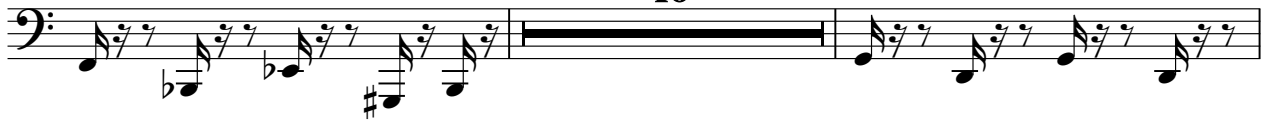
58



60



62



74



76



78



80



82



84



# Percussion

♩ = 105,000107

5

9

11

13

15

17

19

21

23

V.S.

25

Musical notation for measure 25, featuring a snare drum pattern with eighth notes and a cymbal symbol above the staff.

27

Musical notation for measure 27, featuring a snare drum pattern with eighth notes.

29

Musical notation for measure 29, featuring a snare drum pattern with eighth notes.

31

Musical notation for measure 31, featuring a snare drum pattern with eighth notes.

33

Musical notation for measure 33, featuring a snare drum pattern with eighth notes and a cymbal symbol above the staff.

35

Musical notation for measure 35, featuring a snare drum pattern with eighth notes.

37

Musical notation for measure 37, featuring a snare drum pattern with eighth notes.

39

Musical notation for measure 39, featuring a snare drum pattern with eighth notes.

41

Musical notation for measure 41, featuring a snare drum pattern with eighth notes, a cymbal symbol, and a '6' indicating a sixteenth note triplet.

43

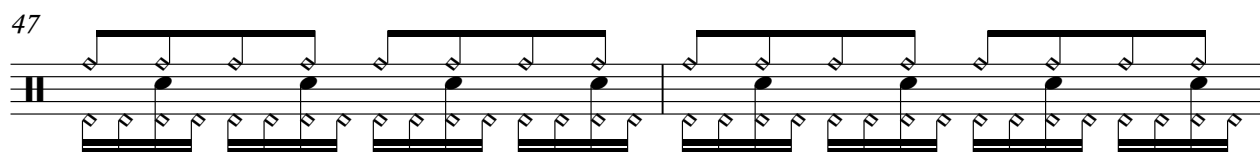
Musical notation for measure 43, featuring a snare drum pattern with eighth notes.

Percussion

45



47



49



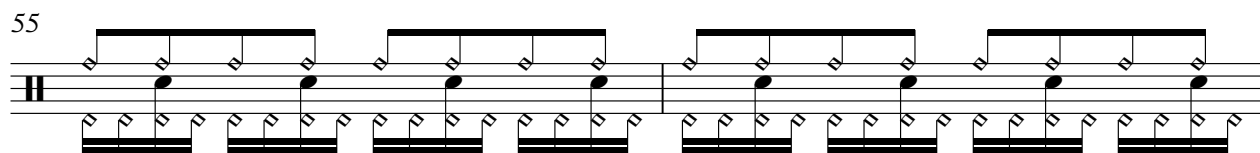
51



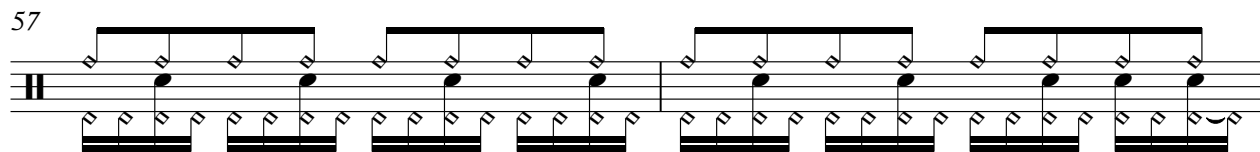
53



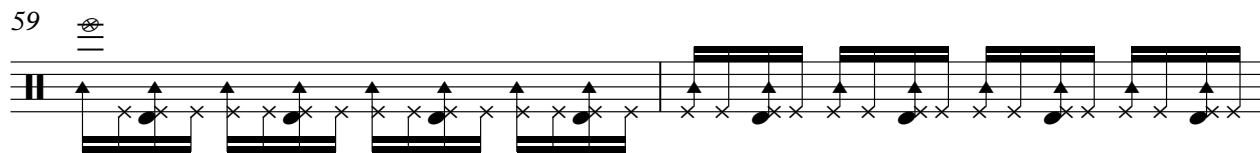
55



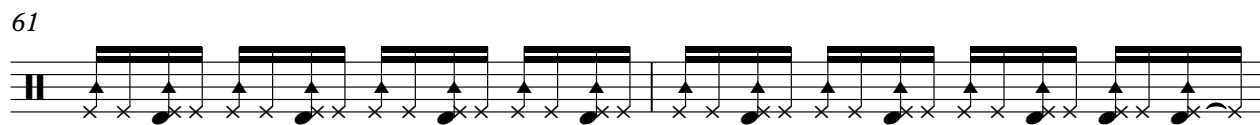
57



59



61



63



66



70



73



75



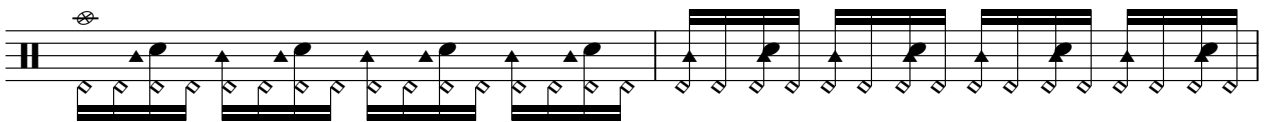
77



79



81



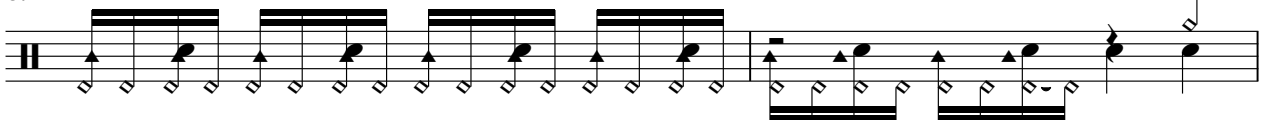
83



85



87



89

Measure 89: A single staff with a treble clef and a key signature of one flat. The notation consists of a series of eighth notes with stems pointing up, followed by a series of eighth notes with stems pointing down. Above the staff, there are four groups of beamed eighth notes, each with a thick black bar above it. A circled 'X' symbol is positioned above the first two notes of the first group.

91

Measure 91: A single staff with a treble clef and a key signature of one flat. The notation consists of a series of eighth notes with stems pointing up, followed by a series of eighth notes with stems pointing down. Above the staff, there are four groups of beamed eighth notes, each with a thick black bar above it.

93

Measure 93: A single staff with a treble clef and a key signature of one flat. The notation consists of a series of eighth notes with stems pointing up, followed by a series of eighth notes with stems pointing down. Above the staff, there are four groups of beamed eighth notes, each with a thick black bar above it. A circled 'X' symbol is positioned above the first two notes of the first group.

95

Measure 95: A single staff with a treble clef and a key signature of one flat. The notation consists of a series of eighth notes with stems pointing up, followed by a series of eighth notes with stems pointing down. Above the staff, there are four groups of beamed eighth notes, each with a thick black bar above it. A circled 'X' symbol is positioned above the first two notes of the first group.

97

Measure 97: A single staff with a treble clef and a key signature of one flat. The notation consists of a series of eighth notes with stems pointing up, followed by a series of eighth notes with stems pointing down. Above the staff, there are four groups of beamed eighth notes, each with a thick black bar above it. A circled 'X' symbol is positioned above the first two notes of the first group. A tempo marking of quarter note = 70,000069 is present at the end of the measure.

100

Measure 100: A single staff with a treble clef and a key signature of one flat. The notation consists of a series of eighth notes with stems pointing up, followed by a series of eighth notes with stems pointing down. Above the staff, there are four groups of beamed eighth notes, each with a thick black bar above it. A circled 'X' symbol is positioned above the first two notes of the first group. The number '6' is written below the staff under each of the four groups of beamed eighth notes.



# Acoustic Bass

♩ = 105,000107



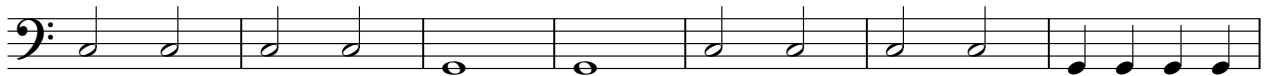
8



13



18



25



30



35



40



45



50



V.S.

55



60



73



78



83



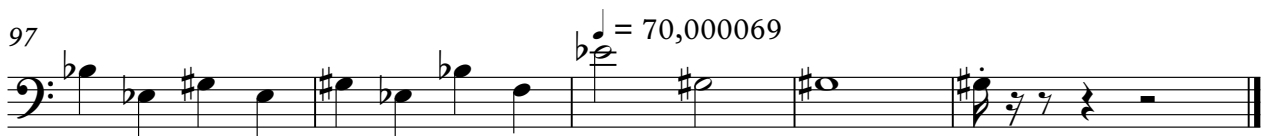
88



93

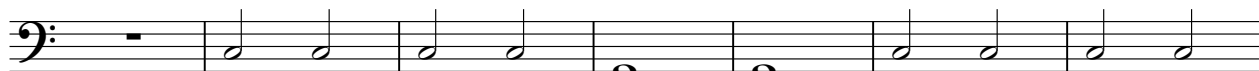


97



# Fretless Electric Bass

♩ = 105,000107  
SEEMANNM



V.S.

55



60



74



79



84



89

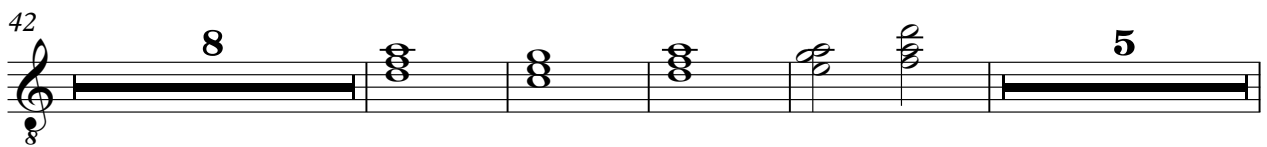
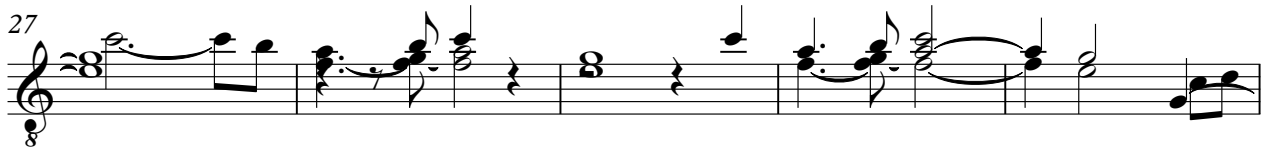
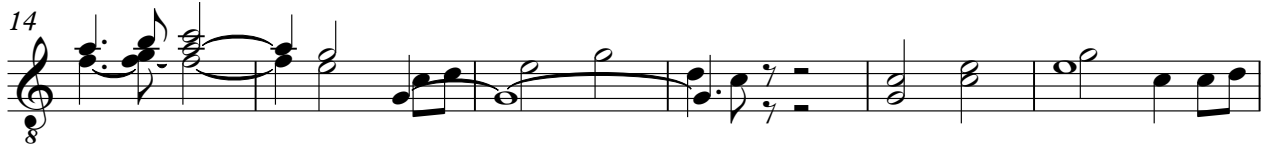


94



# Quintus

♩ = 105,000107



2

Quintus

80

Musical notation for Quintus, measures 80-83. The staff shows a sequence of chords and melodic lines. Measure 80 starts with a whole rest. Measure 81 has a chord with a flat. Measure 82 has a triplet of eighth notes. Measure 83 has a triplet of eighth notes and a whole note.

84

Musical notation for Quintus, measures 84-88. The staff shows a sequence of chords and melodic lines. Measure 84 has a triplet of eighth notes. Measure 85 has a triplet of eighth notes. Measure 86 has a triplet of eighth notes. Measure 87 has a triplet of eighth notes. Measure 88 has a chord with a flat.

89

Musical notation for Quintus, measures 89-92. The staff shows a sequence of chords and melodic lines. Measure 89 has a triplet of eighth notes. Measure 90 has a triplet of eighth notes. Measure 91 has a triplet of eighth notes. Measure 92 has a triplet of eighth notes.

93

Musical notation for Quintus, measures 93-96. The staff shows a sequence of chords and melodic lines. Measure 93 has a triplet of eighth notes. Measure 94 has a triplet of eighth notes. Measure 95 has a triplet of eighth notes. Measure 96 has a chord with a flat.

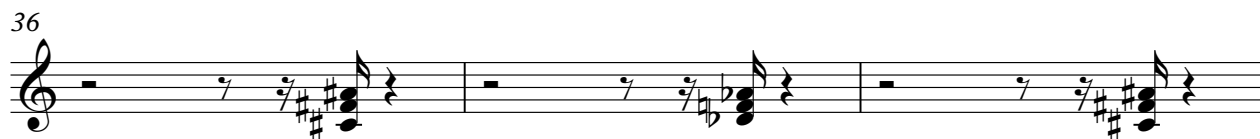
♩ = 70,000069

97

Musical notation for Quintus, measures 97-100. The staff shows a sequence of chords and melodic lines. Measure 97 has a chord with a flat. Measure 98 has a chord with a flat. Measure 99 has a chord with a flat. Measure 100 has a chord with a flat.

# Tape Sampler Keyboard [Brass]

♩ = 105,000107



42



46



50



54



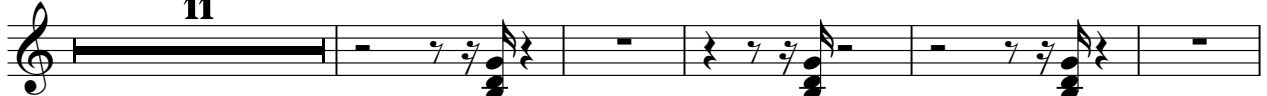
57



60



63



79





85



92



96



# FX 5 (Brightness)

♩ = 105,000107

3 14

21

7 50 3

75

3

79

2 16 3

♩ = 70,000069