

Seiken Densetsu 2 - The Fairy Child

♩ = 120,000000

Channel 1+2+3

Channel 4

Channel 5

Channel 6

Channel 7

Channel 8

This system of musical notation consists of six staves. The top staff, labeled 'Channel 1+2+3', uses a double bar line and a 4/4 time signature, with notes marked with 'x' to indicate guitar fretting. The subsequent five staves, labeled 'Channel 4' through 'Channel 8', use a treble clef and a 4/4 time signature. Channel 4 and 5 feature a melodic line with eighth notes and rests. Channel 6 and 7 feature a bass line with eighth notes and rests. Channel 8 is currently empty.

2

Channel 1+2+3

Channel 4

Channel 5

Channel 6

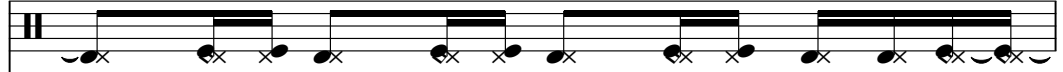
Channel 7

This system of musical notation consists of five staves. The top staff, labeled 'Channel 1+2+3', continues with the guitar fretting notation. The staves labeled 'Channel 4' through 'Channel 7' continue the melodic and bass lines from the first system. Channel 8 is not present in this system.

2

3

Channel 1+2+3



Channel 4



Channel 5



Channel 6



Channel 7



4

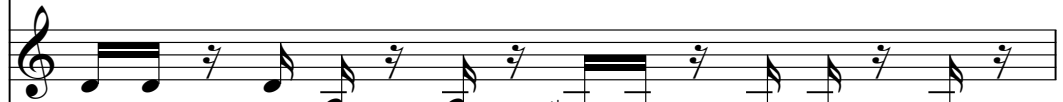
Channel 1+2+3



Channel 4



Channel 5



Channel 6



Channel 7



5

Channel 1+2+3

Channel 4

Channel 5

Channel 6

Channel 7

6

Channel 1+2+3

Channel 4

Channel 5

Channel 6

Channel 7

Channel 1+2+3



Channel 4




Channel 5



Channel 6



Channel 7



Channel 1+2+3



Channel 4



Channel 5



Channel 6



Channel 7



Channel 8



9

Channel 1+2+3

Channel 4

Channel 5

Channel 6

Channel 8

This musical score block contains five staves. The top staff, labeled 'Channel 1+2+3', uses a double bar line and contains a series of eighth notes with 'x' marks, representing a guitar strumming pattern. The second staff, 'Channel 4', and the third staff, 'Channel 5', both use treble clefs and contain eighth notes with stems pointing up and down, indicating a specific melodic line. The fourth staff, 'Channel 6', also uses a treble clef and contains eighth notes with stems pointing down, representing a bass line. The fifth staff, 'Channel 8', uses a treble clef and contains eighth notes with stems pointing down, similar to Channel 6 but with a different rhythmic pattern.

10

Channel 1+2+3

Channel 4

Channel 5

Channel 6

Channel 8

This musical score block contains five staves. The top staff, 'Channel 1+2+3', continues the strumming pattern from the previous block. The second staff, 'Channel 4', and the third staff, 'Channel 5', continue their respective melodic lines. The fourth staff, 'Channel 6', continues its bass line, with some notes marked with a sharp sign (#). The fifth staff, 'Channel 8', continues its eighth-note pattern, ending with a few notes that have stems pointing up.

Channel 1+2+3

Channel 4

Channel 5

Channel 6

Channel 8

Channel 1+2+3

Channel 4

Channel 5

Channel 6

Channel 8

13

Channel 1+2+3

Channel 4

Channel 5

Channel 6

Channel 8

This musical score block contains five staves of music for measures 13 and 14. The top staff, labeled 'Channel 1+2+3', uses a guitar-specific notation with 'x' marks on the strings and rhythmic flags. The other four staves (Channels 4, 5, 6, and 8) use standard musical notation with treble clefs. Channel 4 features a sequence of eighth notes with rhythmic flags. Channel 5 has eighth notes with flags and a triplet of eighth notes. Channel 6 contains eighth notes with flags and a triplet of eighth notes. Channel 8 also features eighth notes with flags and a triplet of eighth notes. The music is organized into two measures, with measure 13 on the left and measure 14 on the right.

14

Channel 1+2+3

Channel 4

Channel 5

Channel 6

Channel 8

This musical score block contains five staves of music for measures 13 and 14. The top staff, labeled 'Channel 1+2+3', uses a guitar-specific notation with 'x' marks on the strings and rhythmic flags. The other four staves (Channels 4, 5, 6, and 8) use standard musical notation with treble clefs. Channel 4 features a sequence of eighth notes with rhythmic flags. Channel 5 has eighth notes with flags and a triplet of eighth notes. Channel 6 contains eighth notes with flags and a triplet of eighth notes. Channel 8 also features eighth notes with flags and a triplet of eighth notes. The music is organized into two measures, with measure 13 on the left and measure 14 on the right.

15

Channel 1+2+3

Channel 4

Channel 5

Channel 6

Channel 8

16

Channel 1+2+3

Channel 4

Channel 5

Channel 6

Channel 8

17

Channel 1+2+3

Channel 4

Channel 5

Channel 6

Channel 7

Channel 8

This musical score block covers measures 17 and 18 across eight channels. Measure 17 starts with a double bar line and a common time signature. Channel 1+2+3 features a guitar-style accompaniment with a repeating eighth-note pattern. Channel 4 has a melodic line with eighth notes and rests. Channel 5 has a similar melodic line. Channel 6 has a bass line with eighth notes. Channel 7 is mostly empty with a few notes. Channel 8 has a bass line with eighth notes. Measure 18 continues the patterns from measure 17, with some notes beamed together and a slur over a group of notes in Channel 4.

18

Channel 1+2+3

Channel 4

Channel 5

Channel 6

Channel 7

Channel 8

This musical score block covers measures 18 and 19 across eight channels. Measure 18 starts with a double bar line and a common time signature. Channel 1+2+3 features a guitar-style accompaniment with a repeating eighth-note pattern. Channel 4 has a melodic line with eighth notes and rests. Channel 5 has a similar melodic line. Channel 6 has a bass line with eighth notes. Channel 7 has a bass line with eighth notes. Channel 8 has a bass line with eighth notes. Measure 19 continues the patterns from measure 18, with some notes beamed together and a slur over a group of notes in Channel 4.

19

Channel 1+2+3

Channel 4

Channel 5

Channel 6

Channel 8

This musical score block covers measures 19 and 20. It features five staves: Channel 1+2+3 (guitar), Channel 4 (treble clef), Channel 5 (treble clef), Channel 6 (treble clef), and Channel 8 (treble clef). Measure 19 shows a guitar part with a series of chords and single notes, while the other channels play rhythmic accompaniment. Measure 20 continues the piece with more complex guitar and accompaniment parts.

20

Channel 1+2+3

Channel 4

Channel 5

Channel 6

Channel 7

Channel 8

6

This musical score block covers measures 20 and 21. It features seven staves: Channel 1+2+3 (guitar), Channel 4 (treble clef), Channel 5 (treble clef), Channel 6 (treble clef), Channel 7 (treble clef), and Channel 8 (treble clef). Measure 20 shows a guitar part with a series of chords and single notes, while the other channels play rhythmic accompaniment. Measure 21 continues the piece with more complex guitar and accompaniment parts, including a triplet in Channel 4 and a sixteenth-note run in Channel 8.

21 ♩ = 120,000000

Channel 1+2+3

Channel 4

Channel 5

Channel 6

Channel 7

Channel 8

22

Channel 1+2+3

Channel 4

Channel 5

Channel 6

Channel 7

Channel 1+2+3

Channel 4

Channel 5

Channel 6

Channel 7

Channel 1+2+3

Channel 4

Channel 5

Channel 6

Channel 7

25

Channel 1+2+3

Channel 4

Channel 5

Channel 6

Channel 7

This musical score block contains five staves labeled Channel 1+2+3, Channel 4, Channel 5, Channel 6, and Channel 7. The first staff (Channel 1+2+3) uses a double bar line and contains rhythmic notation with 'x' marks above the notes. The other four staves (Channels 4-7) use a treble clef and contain melodic notation with various note values and rests. The music spans two measures, with measure 25 starting at the beginning of the block and measure 26 ending at the end of the block.

26

Channel 1+2+3

Channel 4

Channel 5

Channel 6

Channel 7

This musical score block contains five staves labeled Channel 1+2+3, Channel 4, Channel 5, Channel 6, and Channel 7. The first staff (Channel 1+2+3) uses a double bar line and contains rhythmic notation with 'x' marks above the notes. The other four staves (Channels 4-7) use a treble clef and contain melodic notation with various note values and rests. The music spans two measures, with measure 25 starting at the beginning of the block and measure 26 ending at the end of the block.

27

Channel 1+2+3



Channel 4



Channel 5



Channel 6



Channel 7



28

Channel 1+2+3



Channel 4



Channel 5



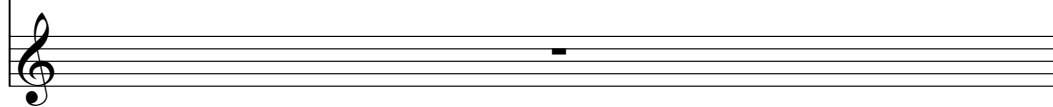
Channel 6



Channel 7



Channel 8



29

Channel 1+2+3

Channel 4

Channel 5

Channel 6

Channel 8

30

Channel 1+2+3

Channel 4

Channel 5

Channel 6

Channel 8

Channel 1+2+3

Channel 4

Channel 5

Channel 6

Channel 8

Channel 1+2+3

Channel 4

Channel 5

Channel 6

Channel 8

33

Channel 1+2+3

Channel 4

Channel 5

Channel 6

Channel 8

This musical score block contains five staves of music for measures 33 and 34. The top staff, labeled 'Channel 1+2+3', uses a double bar line and contains rhythmic notation with 'x' marks. The other four staves (Channels 4, 5, 6, and 8) use a treble clef and contain melodic lines with various note values and rests. In measure 33, Channels 6 and 8 feature triplet markings over groups of three notes. In measure 34, Channel 8 also features a triplet marking. The notation includes stems, beams, and various note heads.

34

Channel 1+2+3

Channel 4

Channel 5

Channel 6

Channel 8

This musical score block contains five staves of music for measures 34 and 35. The top staff, labeled 'Channel 1+2+3', uses a double bar line and contains rhythmic notation with 'x' marks. The other four staves (Channels 4, 5, 6, and 8) use a treble clef and contain melodic lines with various note values and rests. The notation includes stems, beams, and various note heads.

35

Channel 1+2+3

Channel 4

Channel 5

Channel 6

Channel 8

36

Channel 1+2+3

Channel 4

Channel 5

Channel 6

Channel 8

37

Channel 1+2+3

Channel 4

Channel 5

Channel 6

Channel 7

Channel 8

This musical score block covers measures 37 to 40. Channel 1+2+3 is a guitar channel with a double bar line at the start of measure 37, followed by a sequence of chords and single notes. Channel 4 and 5 are melodic lines in treble clef, featuring eighth and sixteenth notes with slurs. Channel 6 is a bass line in treble clef with chords and single notes. Channel 7 is a treble clef staff that is mostly empty, with a few notes in measure 39. Channel 8 is a treble clef staff with a melodic line of eighth and sixteenth notes.

38

Channel 1+2+3

Channel 4

Channel 5

Channel 6

Channel 7

Channel 8

This musical score block covers measures 38 to 41. Channel 1+2+3 starts with a double bar line and a few notes in measure 38, then continues with chords and notes. Channel 4 and 5 are melodic lines in treble clef with eighth and sixteenth notes. Channel 6 is a bass line in treble clef with chords and notes. Channel 7 is a treble clef staff with a melodic line of eighth and sixteenth notes. Channel 8 is a treble clef staff with a melodic line of eighth and sixteenth notes.

39

Channel 1+2+3

Channel 4

Channel 5

Channel 6

Channel 8

40

Channel 1+2+3

Channel 4

Channel 5

Channel 6

Channel 7

Channel 8

6

2

Channel 1+2+3

21 ♩ = 120,000000



23



25



27



29



31



33



35



37



39



40

The image shows a musical score for guitar. The top staff contains a melodic line with a 7th fret barre, a quarter note, a beamed eighth-note pair, a quarter note, and another beamed eighth-note pair. The bottom staff is a guitar tablature with six lines. It features a 7th fret barre, followed by three groups of notes: a pair of eighth notes on strings 1 and 2, a pair on strings 2 and 3, and a pair on strings 3 and 4. The final group is a triplet of eighth notes on strings 3, 4, and 5, indicated by a bracket and the number '3'. The piece ends with a double bar line.

♩ = 120,000000



3



5



7



9



11



13



15



17



20

♩ = 120,000000



V.S.

22



24



26



28



30



32



34



36



38



40



22



24



26



28



30



32



34



36



39



♩ = 120,000000

4

7

10

12

14

16

19

22

25

♩ = 120,000000

2

Channel 6

27



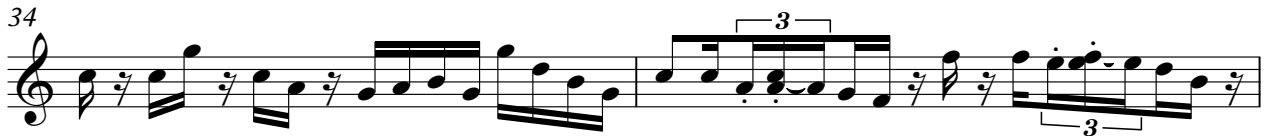
30



32



34



36



39



♩ = 120,000000

7

11

13

15

18

♩ = 120,000000

21

31

33

35

38

2

Channel 8

40

