

Status Quo - Whatever You Want 2

♩ = 120,000000

drummix

mut.Git.

E.guitar

overdriv

overdriv

Bass

Vocal

♩ = 120,000000

mut.Git.

E.guitar

mut.Git.

E.guitar

2

6

mut. Git.

E.guitar

overdriv

9

mut. Git.

E.guitar

overdriv

11

mut. Git.

E.guitar

overdriv

13

mut. Git.

E.guitar

overdriv

15

mut. Git.

E.guitar

overdriv

overdriv

Tab for E.guitar (measures 15-16):

T						0	2	0	2
A						0	0 0	0 0	0 0
B	0	0 0	0 0	0 0	0	0	0 0	0 0	0 0

17

E.guitar

overdriv

overdriv

Tab for E.guitar (measures 17-18):

T	0	2	0	2	0	2	0	2
A	0	0 0	0 0	0 0	0	0	0 0	0 0
B	0	0 0	0 0	0 0	0	0	0 0	0 0

19

E.guitar

overdriv

overdriv

Tab for E.guitar (measures 19-20):

T	0	2							
A	0	0 0	0	0	4	4	5	5	2
B	0	0 0	0	0	4	4	5	5	0

21

E.guitar

overdriv

overdriv

23

drummix

E.guitar

overdriv

overdriv

Bass

25

drummix

E.guitar

overdriv

overdriv

Bass

27

drummix

E.guitar

overdriv

overdriv

Bass

29

drummix

E.guitar

overdriv

overdriv

Bass

31

drummix

E.guitar

overdriv

overdriv

Bass

Vocal

33

drummix

E.guitar

overdriv

overdriv

Bass

Vocal

35

drummix

E.guitar

overdriv

overdriv

Bass

Vocal

37

drummix

E.guitar

overdriv

overdriv

Bass

Vocal

39

drummix

E.guitar

overdriv

overdriv

Bass

Vocal

3

41

drummix

E.guitar

overdriv

overdriv

Bass

Vocal

4

43

drummix

E.guitar

overdriv

overdriv

Bass

Vocal

45

drummix

E.guitar

overdriv

overdriv

Bass

Vocal

47

drummix

E.guitar

overdriv

overdriv

Bass

Vocal

49

drummix

E.guitar

overdriv

overdriv

Bass

Vocal

51

drummix

E.guitar

overdriv

overdriv

Bass

Vocal

53

drummix

E.guitar

overdriv

overdriv

Bass

Vocal

55

drummix

E.guitar

overdriv

overdriv

Bass

Vocal

57

drummix

E.guitar

overdriv

overdriv

Bass

Vocal

59

drummix

E.guitar

overdriv

overdriv

Bass

Vocal

61

drummix

E.guitar

overdriv

overdriv

Bass

Vocal

63

drummix

E.guitar

overdriv

overdriv

Bass

Vocal

65

drummix

E.guitar

overdriv

overdriv

Bass

67

drummix

E.guitar

overdriv

overdriv

Bass

69

drummix

E.guitar

overdriv

overdriv

Bass

71

drummix

E.guitar

overdriv

overdriv

Bass

Vocal

Detailed description: This block contains the musical notation for measures 71 and 72. The drummix part shows a steady rhythm with snare and bass drum patterns. The electric guitar part features a sequence of chords (0, 2, 0, 2) and a melodic line with a triplet. The two overdrive tracks provide harmonic support with sustained notes and rhythmic patterns. The bass line follows a similar rhythmic pattern to the guitar. The vocal line is mostly silent, with a few notes appearing at the end of measure 72.

73

drummix

E.guitar

overdriv

overdriv

Bass

Vocal

Detailed description: This block contains the musical notation for measures 73 and 74. The drummix part continues with a consistent rhythm. The electric guitar part shows a chord progression (0, 2, 0, 2) and a melodic line with a triplet. The two overdrive tracks provide harmonic support with sustained notes and rhythmic patterns. The bass line follows a similar rhythmic pattern to the guitar. The vocal line has more activity, with several notes and rests across both measures.

75

drummix

E.guitar

overdriv

overdriv

Bass

Vocal

77

drummix

E.guitar

overdriv

overdriv

Bass

Vocal

79

drummix

E.guitar

overdriv

overdriv

Bass

Vocal

81

drummix

E.guitar

overdriv

overdriv

Bass

Vocal

83

drummix

E.guitar

overdriv

overdriv

Bass

Vocal

85

drummix

E.guitar

overdriv

overdriv

Bass

Vocal

88

drummix

E.guitar

overdriv

overdriv

Bass

Vocal

90

drummix

E.guitar

overdriv

overdriv

Bass

Vocal

92

drummix

E.guitar

overdriv

overdriv

Bass

Vocal

94

drummix

E.guitar

overdriv

overdriv

Bass

Vocal

96

drummix

E.guitar

overdriv

overdriv

Bass

Vocal

98

drummix

E.guitar

overdriv

overdriv

Bass

Vocal

100

drummix

E.guitar

overdriv

overdriv

Bass

Vocal

Detailed description: This block contains the musical notation for measures 100 and 101. It features six staves: drummix, electric guitar (with tablature), two overdrive guitar parts, bass, and vocal. The drummix staff shows a consistent pattern of snare and kick drums. The electric guitar staff includes a tablature with fret numbers 0 and 2. The overdrive guitar parts consist of distorted guitar lines. The bass staff shows a steady bass line. The vocal staff contains a melodic line with lyrics.

102

drummix

E.guitar

overdriv

overdriv

Bass

Vocal

Detailed description: This block contains the musical notation for measures 102 and 103. It features six staves: drummix, electric guitar (with tablature), two overdrive guitar parts, bass, and vocal. The drummix staff shows a consistent pattern of snare and kick drums. The electric guitar staff includes a tablature with fret numbers 0 and 2. The overdrive guitar parts consist of distorted guitar lines. The bass staff shows a steady bass line. The vocal staff contains a melodic line with lyrics.

108

drummix

E.guitar

overdriv

overdriv

Bass

Vocal

Detailed description: This block contains the musical score for measures 108 and 109. It features six staves: drummix, electric guitar (E.guitar), two overdrive (overdriv) tracks, bass, and vocal. The drummix staff shows a consistent rhythmic pattern of eighth notes. The electric guitar staff includes a tablature with fret numbers (0, 2, 3, 0, 2) and a corresponding chord diagram with strings T, A, and B. The two overdrive tracks provide harmonic support with eighth-note patterns. The bass staff features a melodic line with a triplet of eighth notes in measure 109. The vocal staff contains a melodic line with a sharp sign (#) on the second note of each measure.

110

drummix

E.guitar

overdriv

overdriv

Bass

Vocal

Detailed description: This block contains the musical score for measures 110 and 111. It features six staves: drummix, electric guitar (E.guitar), two overdrive (overdriv) tracks, bass, and vocal. The drummix staff continues the rhythmic pattern. The electric guitar staff shows a similar fret sequence (0, 2, 0, 2) and chord diagram. The overdrive tracks maintain their harmonic patterns. The bass staff continues its melodic line. The vocal staff continues the melodic line with a sharp sign (#) on the second note of each measure.

116

The image shows a musical score for a multi-track recording. It consists of seven staves, each representing a different instrument or voice part. The staves are labeled on the left as follows: drummix, mut. Git., E.guitar, overdriiv, overdriiv, Bass, and Vocal. The drummix staff shows a rhythmic pattern with a sixteenth-note triplet marked with a '6' and a fermata. The mut. Git. staff is mostly empty with some rests. The E.guitar staff shows a TAB section with 'T', 'A', and 'B' labels and '0' fret markers. The two overdriiv staves show melodic lines with notes and rests. The Bass staff shows a simple bass line with notes and rests. The Vocal staff is mostly empty with some rests.

Status Quo - Whatever You Want 2

drummix

♩ = 120,000000

21

25

29

33

37

41

45

49

53

58

V.S.

62

3

66

70

6

74

78

6

82

6

86

6

90

94

98

3

102

Musical notation for measure 102, featuring a drumstick icon on the left and a series of eighth notes with 'x' marks below them, indicating a specific drum pattern.

106

Musical notation for measure 106, featuring a drumstick icon on the left and a series of eighth notes with 'x' marks below them. A triplet of eighth notes is marked with a '3' below it, and a fermata is placed over the final note of the measure.

110

Musical notation for measure 110, featuring a drumstick icon on the left and a series of eighth notes with 'x' marks below them.

114

Musical notation for measure 114, featuring a drumstick icon on the left and a series of eighth notes with 'x' marks below them. Two groups of sixteenth notes are marked with a '6' below them, indicating a sixteenth-note triplet. A fermata is placed over the final note of the measure, and a '2' is written above the final bar line.

Status Quo - Whatever You Want 2

mut.Git.

♩ = 120,000000

4

6

9

11

14

16

101

2

Status Quo - Whatever You Want 2

E.guitar

♩ = 120,000000

D		0	0	5	5	5	2	5		2	2	2	2	0	0	0
T	A						9	0	5	5	5	3	3			2
A	G									0	0	0	0	0	0	0
B	D	0	0	0			0									
D	A									3	3	3	3	3	2	2
D	D													2	2	

4

T	0	0	4	4	5	5	2	5	2	2	0	0	0	0	0	0
A	2	0												3	7	7
B	2	0	0	0	0	0	0							0	0	0
D	0	0												3	3	5
D														0	0	0
D																0

8

T																
A																
B	0	0	0	0	0	0	0	0	0	0	0	0	0	0	0	0
D	0	0	0	0	0	0	0	0	0	0	0	0	0	0	0	0

10

T																
A																
B	0	0	0	0	0	0	0	0	0	0	0	0	0	0	0	0
D	0	0	0	0	0	0	0	0	0	0	0	0	0	0	0	0

13

T																
A																
B	0	0	0	0	0	0	0	0	0	0	0	0	0	0	0	0
D	0	0	0	0	0	0	0	0	0	0	0	0	0	0	0	0

15

T																
A																
B	0	0	0	0	0	0	0	0	0	0	0	0	0	0	0	0
D	0	0	0	0	0	0	0	0	0	0	0	0	0	0	0	0

18

T	0	2	0	2						0	2					
A	0	0	0	0	0	0	0	0		0	0	0	0			
B														4	4	5
D														4	4	5

20

T										0	2	0	2			
A	2	4	2	4						0	0	0	0	0	0	0
B	0	0	0	0	0	0	0	0	0	0	0	0	0	0	0	0
D																

23

T	0	2	0							0	2	0	2			
A	0	0	0	0	0	0	0	0	0	0	0	0	0	0	0	0
B																
D																

26

T	0	2	0	2						0	2					
A	0	0	0	0	0	0	0	0		0	0	0	0			
B														4	4	5
D														4	4	5

V.S.

56

T	0	2	0	2	0	2	0	2
A	0	0	0	0	0	0	0	0
B	0	0	0	0	0	0	0	0

58

T	0	2	0	2	0	2		
A	0	0	0	0	0	0	0	0
B							4	4 5 5

60

T								
A	2	0	4	0	2	0	4	0
B	0	0	0	0	0	0	0	0

62

T	0	2	0	2	0	2	0	2	3	3	3	3	3	3	3
A	0	0	0	0	0	0	0	0	0	0	0	0	0	0	0
B	0	0	0	0	0	0	0	0	0	0	0	0	0	0	0

65

T	3	3	3	3	3	3	3	3	3	3	3	3	3	3	3
A	3	3	3	3	3	3	3	3	3	3	3	3	3	3	3
B	3	3	3	3	3	3	3	3	3	3	3	3	3	3	3

68

T									3	3	3	3	3	3	3	2	2	2	2	2	2	2
A	0	0	0	0	0	0	0	0	3	3	3	3	3	3	3	2	2	2	2	2	2	2
B	3	3	3	3	3	3	3	3	3	3	3	3	3	3	3	2	2	2	2	2	2	2

71

T									0	2	0	2										
A	2	2	2	2	2	2	2	2	0	0	0	0	0	0	0	0	0	0	0	0	0	0
B	0	0	0	0	0	0	0	0	0	0	0	0	0	0	0	0	0	0	0	0	0	0

74

T	0	2	0	2	0	2	0	2														
A	0	0	0	0	0	0	0	0	0	0	0	0	0	0	0	0	0	0	0	0	0	0
B																						

76

T	0	2																				
A	0	0	0	0	0	0	0	0	2	4	2	4	0	2	4	2	4	0	0	0	0	0
B									4	4	5	5	0	0	0	0	0	0	0	0	0	0

79

T	0	2	0	2	0	2	0	2	3	3	3	3	3	3	3	3	3	3	3	3	3	3
A	0	0	0	0	0	0	0	0	3	3	3	3	3	3	3	3	3	3	3	3	3	3
B									3	3	3	3	3	3	3	3	3	3	3	3	3	3

V.S.

T
A 0 2 4 0 | 2 4 0 2 4 0
B 4 4 5 5 0 0 0 0 | 0 0 0 0 2 0 4 0

T 0 2 0 | 0
A 2 4 0 0 0 0 0 0 | 0
B 0 0 0 0 0 0 0 0 | 0

Status Quo - Whatever You Want 2

overdriv

♩ = 120,000000

7

12

17

21

24

28

32

35

38

41

V.S.

Detailed description: This is a guitar score for the song 'Whatever You Want 2' by Status Quo. It is written in 4/4 time with a tempo of 120,000000. The score consists of ten staves of music. The first staff begins with a 7-measure bar. The music is characterized by a driving, overdriven sound. It features a mix of block chords, arpeggiated patterns, and melodic lines. The key signature has one sharp (F#), and the time signature is 4/4. The notation includes various rhythmic values such as eighth and sixteenth notes, as well as rests and accidentals. The score concludes with a 'V.S.' (Verso) marking.

44

47

50

54

57

59

61

63

66

69

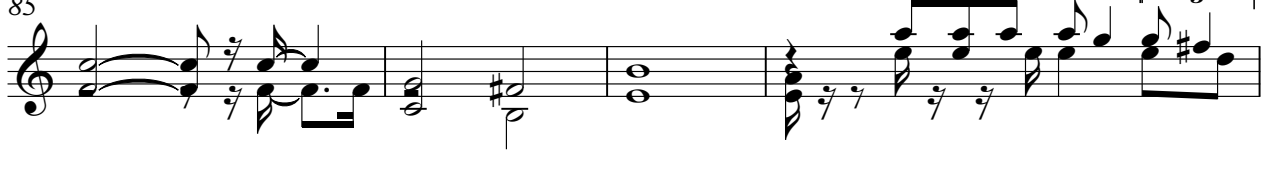
72 

75 


77 

79 

82 

85 

89 

92 

94 

96 

V.S.

Status Quo - Whatever You Want 2

overdriv

♩ = 120,000000

15

18

20

22

25

27

29

32

35

37

V.S.

40

43

45

47

51

56

58

60

62

65

68 3

71

74

76

78

80

83

88

91

93

V.S.

95

97

99

102

104

106

108

110

112

114

2

Status Quo - Whatever You Want 2

Bass

♩ = 120,000000

23



26



29



32



35



38



41



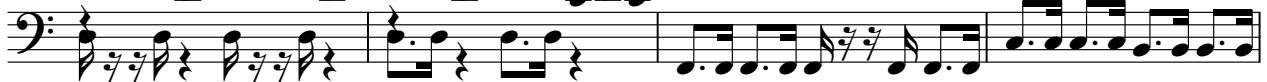
44



47



50



V.S.

54

58

61

64

68

72

75

79

82

85

89



92



96



100



103



106



109



112



114



Vocal

Status Quo - Whatever You Want 2

♩ = 120,000000
30

34

38

42

46

51

56

60

62 **8**

72



76



80



85



90



94



99



103



107



111



114

