

Teleac Rockscool & Styles - Disco Old

♩ = 109,001724

DRUMS

MUTED GTR

FINGERDBAS

CHOIR AAHS

CLAVINET

SYN STR 1

FANTASIA

♩ = 109,001724

STAR THEME



6

DRUMS

FINGERDBAS

CLAVINET

SYN STR 1

POLYSYNTH

8

DRUMS

FINGERDBAS

CLAVINET

SYN STR 1

POLYSYNTH

Detailed description: This system covers measures 8, 9, and 10. The DRUMS part features a consistent pattern of eighth notes with 'x' marks above them, indicating cymbal hits. The FINGERDBAS part has a steady eighth-note bass line. The CLAVINET part consists of chords with a rhythmic pattern of eighth notes and rests. The SYN STR 1 part has a sustained chord that changes at the start of measure 9. The POLYSYNTH part plays a complex, multi-layered eighth-note pattern.



11

DRUMS

FINGERDBAS

CLAVINET

SYN STR 1

POLYSYNTH

Detailed description: This system covers measures 11 and 12. The DRUMS part continues with the same eighth-note pattern. The FINGERDBAS part continues with its eighth-note line. The CLAVINET part continues with its chordal pattern. The SYN STR 1 part has a sustained chord that changes at the start of measure 12. The POLYSYNTH part continues with its complex eighth-note pattern.



13

DRUMS

FINGERDBAS

CLAVINET

SYN STR 1

POLYSYNTH

Detailed description: This system covers measures 13 and 14. The DRUMS part continues with the same eighth-note pattern. The FINGERDBAS part continues with its eighth-note line, including a flat symbol (b) under the first note of measure 13. The CLAVINET part continues with its chordal pattern, also including a flat symbol (b) under the first note of measure 13. The SYN STR 1 part has a sustained chord that changes at the start of measure 14. The POLYSYNTH part continues with its complex eighth-note pattern.

15 3

DRUMS

FINGERDBAS

CLAVINET

SYN STR 1

POLYSYNTH

STAR THEME



18

DRUMS

MUTED GTR

FINGERDBAS

CLAVINET

SYN STR 1

POLYSYNTH

STAR THEME

20

DRUMS

MUTED GTR

FINGERDBAS

CLAVINET

SYN STR 1

POLYSYNTH

STAR THEME



22

DRUMS

FINGERDBAS

CLAVINET

SYN STR 1

POLYSYNTH

STAR THEME

25

DRUMS

FINGERDBAS

CHOIR AAHS

CLAVINET

SYN STR 1

POLYSYNTH

Detailed description: This block contains the musical notation for measures 25, 26, and 27. The DRUMS part features a consistent rhythmic pattern of eighth notes with 'x' marks above them. The FINGERDBAS part has a bass line with eighth notes and rests. The CHOIR AAHS part shows sustained chords in the lower register. The CLAVINET part consists of chords with eighth-note patterns. The SYN STR 1 part has long, sustained chords. The POLYSYNTH part features a complex rhythmic pattern of eighth notes.



28

DRUMS

FINGERDBAS

CLAVINET

SYN STR 1

POLYSYNTH

Detailed description: This block contains the musical notation for measures 28, 29, 30, and 31. The DRUMS part continues with the same rhythmic pattern. The FINGERDBAS part has a bass line with eighth notes and rests, including a flat sign in measure 29. The CLAVINET part consists of chords with eighth-note patterns, including a flat sign in measure 29. The SYN STR 1 part has long, sustained chords, including a flat sign in measure 29. The POLYSYNTH part features a complex rhythmic pattern of eighth notes.

30

DRUMS

FINGERDBAS

CLAVINET

SYN STR 1

POLYSYNTH



33

DRUMS

FINGERDBAS

CLAVINET

SYN STR 1

POLYSYNTH

36

DRUMS

FINGERDBAS

CHOIR AAHS

CLAVINET

SYN STR 1

FANTASIA

POLYSYNTH



38

DRUMS

FINGERDBAS

CLAVINET

SYN STR 1

POLYSYNTH

40

DRUMS

FINGERDBAS

CLAVINET

SYN STR 1

POLYSYNTH

STAR THEME



43

DRUMS

FINGERDBAS

CLAVINET

SYN STR 1

POLYSYNTH

STAR THEME

45

DRUMS

MUTED GTR

FINGERDBAS

CLAVINET

SYN STR 1

POLYSYNTH

Detailed description: This system covers measures 45 and 46. The drums play a consistent pattern of eighth notes with 'x' marks above them. The muted guitar is silent in measure 45 and plays a series of chords in measure 46. The fingerboard bass plays a steady eighth-note line. The clavinet plays chords with a rhythmic pattern. The synth string 1 part has a few notes. The polysynth part plays a rhythmic pattern of chords.



47

DRUMS

FINGERDBAS

CLAVINET

SYN STR 1

POLYSYNTH

Detailed description: This system covers measures 47 and 48. The drums continue their pattern. The fingerboard bass continues its eighth-note line. The clavinet continues with its rhythmic chords. The synth string 1 part has long, sustained notes. The polysynth part continues with its rhythmic chords.



50

DRUMS

FINGERDBAS

CLAVINET

SYN STR 1

POLYSYNTH

Detailed description: This system covers measures 50 and 51. The drums continue their pattern. The fingerboard bass continues its eighth-note line. The clavinet continues with its rhythmic chords. The synth string 1 part has long, sustained notes. The polysynth part continues with its rhythmic chords.

52

DRUMS

FINGERDBAS

CLAVINET

SYN STR 1

POLYSYNTH



54

DRUMS

MUTED GTR

FINGERDBAS

CLAVINET

SYN STR 1

POLYSYNTH



56

DRUMS

FINGERDBAS

CLAVINET

SYN STR 1

POLYSYNTH

59

DRUMS

FINGERDBAS

CLAVINET

SYN STR 1

POLYSYNTH



61

DRUMS

FINGERDBAS

CLAVINET

SYN STR 1

POLYSYNTH



63

DRUMS

MUTED GTR

FINGERDBAS

CLAVINET

SYN STR 1

POLYSYNTH

65

DRUMS

FINGERDBAS

CLAVINET

SYN STR 1

POLYSYNTH

Detailed description: This system contains measures 65, 66, and 67. The DRUMS part features a consistent rhythmic pattern of eighth notes with 'x' marks above them. The FINGERDBAS part has a steady eighth-note bass line. The CLAVINET part consists of chords with a rhythmic pattern of eighth notes. The SYN STR 1 part has long, sustained notes. The POLYSYNTH part has a rhythmic pattern of eighth notes with chords.



68

DRUMS

MUTED GTR

FINGERDBAS

CLAVINET

SYN STR 1

POLYSYNTH

Detailed description: This system contains measures 68, 69, and 70. The DRUMS part continues with the same rhythmic pattern. The MUTED GTR part has a rhythmic pattern of eighth notes with chords. The FINGERDBAS part continues with the same bass line. The CLAVINET part has chords with a rhythmic pattern. The SYN STR 1 part has long, sustained notes. The POLYSYNTH part has a rhythmic pattern of eighth notes with chords.

70

DRUMS

MUTED GTR

FINGERDBAS

CLAVINET

SYN STR 1

POLYSYNTH



72

DRUMS

FINGERDBAS

CLAVINET

SYN STR 1

POLYSYNTH



75

DRUMS

FINGERDBAS

CLAVINET

SYN STR 1

POLYSYNTH

77

DRUMS

MUTED GTR

FINGERDBAS

CLAVINET

SYN STR 1

POLYSYNTH

Detailed description: This block contains the musical notation for measures 77 through 80. The score is arranged in six staves. The DRUMS staff uses a drum set icon and shows a consistent rhythmic pattern of eighth notes with 'x' marks above them. The MUTED GTR staff features a series of chords with a 'z' (mute) symbol above each. The FINGERDBAS staff has a simple eighth-note bass line. The CLAVINET staff shows chords with a 'z' symbol. The SYN STR 1 staff has a long note with a fermata. The POLYSYNTH staff has chords with a 'z' symbol.



79

DRUMS

MUTED GTR

FINGERDBAS

CLAVINET

SYN STR 1

POLYSYNTH

Detailed description: This block contains the musical notation for measures 79 through 82. The DRUMS staff continues with the same rhythmic pattern. The MUTED GTR staff has a change in chord structure in measure 81. The FINGERDBAS staff continues with the eighth-note bass line. The CLAVINET staff has chords with a 'z' symbol. The SYN STR 1 staff has a long note with a fermata that spans across measures 79 and 80. The POLYSYNTH staff has chords with a 'z' symbol.

81

DRUMS

FINGERDBAS

CLAVINET

SYN STR 1

POLYSYNTH



83

DRUMS

MUTED GTR

FINGERDBAS

CLAVINET

SYN STR 1

POLYSYNTH

85

DRUMS

MUTED GTR

FINGERDBAS

CLAVINET

SYN STR 1

POLYSYNTH

Detailed description: This block contains the musical notation for measures 85 and 86. The score is arranged in six staves. The DRUMS staff shows a consistent rhythmic pattern of eighth notes with 'x' marks above them. The MUTED GTR staff features a series of chords, some with 'x' marks above them. The FINGERDBAS staff has a melodic line with eighth notes. The CLAVINET staff consists of chords with eighth notes. The SYN STR 1 staff has a long, sustained chord. The POLYSYNTH staff has a rhythmic pattern of eighth notes with chords.



87

DRUMS

MUTED GTR

FINGERDBAS

CLAVINET

SYN STR 1

POLYSYNTH

Detailed description: This block contains the musical notation for measures 87 and 88. The score is arranged in six staves. The DRUMS staff shows a consistent rhythmic pattern of eighth notes with 'x' marks above them. The MUTED GTR staff features a series of chords, some with 'x' marks above them. The FINGERDBAS staff has a melodic line with eighth notes. The CLAVINET staff consists of chords with eighth notes. The SYN STR 1 staff has a long, sustained chord. The POLYSYNTH staff has a rhythmic pattern of eighth notes with chords.

89

DRUMS

MUTED GTR

FINGERDBAS

CLAVINET

SYN STR 1

POLYSYNTH



91

DRUMS

MUTED GTR

FINGERDBAS

CLAVINET

SYN STR 1

POLYSYNTH

93

DRUMS

FINGERDBAS

CLAVINET

SYN STR 1

POLYSYNTH



96

DRUMS

FINGERDBAS

CLAVINET

SYN STR 1

POLYSYNTH



98

DRUMS

MUTED GTR

FINGERDBAS

CLAVINET

SYN STR 1

POLYSYNTH

100

DRUMS

MUTED GTR

FINGERDBAS

CLAVINET

SYN STR 1

POLYSYNTH

Detailed description: This system contains measures 100, 101, and 102. The DRUMS part features a consistent rhythmic pattern of eighth notes with 'x' marks above them. The MUTED GTR part has a few initial chords in measure 100 before being silent. The FINGERDBAS part plays a steady eighth-note bass line. The CLAVINET part provides a rhythmic accompaniment with chords. The SYN STR 1 part has a long, sustained chord in measure 100. The POLYSYNTH part plays a rhythmic pattern of eighth notes.



103

DRUMS

MUTED GTR

FINGERDBAS

CLAVINET

SYN STR 1

POLYSYNTH

Detailed description: This system contains measures 103, 104, and 105. The DRUMS part continues with its rhythmic pattern. The MUTED GTR part begins playing in measure 103. The FINGERDBAS part continues its bass line. The CLAVINET part has a change in chord in measure 104. The SYN STR 1 part has a long, sustained chord in measure 104. The POLYSYNTH part continues its rhythmic pattern.

105

DRUMS

MUTED GTR

FINGERDBAS

CLAVINET

SYN STR 1

POLYSYNTH

Detailed description: This system contains measures 105 and 106. The DRUMS part features a consistent rhythmic pattern of eighth notes with 'x' marks above them. The MUTED GTR part consists of a series of chords with a flat sign, some marked with 'x'. The FINGERDBAS part has a steady eighth-note bass line. The CLAVINET part plays chords with a flat sign. The SYN STR 1 part has a sustained chord with a flat sign. The POLYSYNTH part has a rhythmic pattern of eighth notes with a flat sign.



107

DRUMS

MUTED GTR

FINGERDBAS

CLAVINET

SYN STR 1

POLYSYNTH

Detailed description: This system contains measures 107 and 108. The DRUMS part continues with the same rhythmic pattern. The MUTED GTR part has a different chord pattern. The FINGERDBAS part continues with the eighth-note bass line. The CLAVINET part continues with chords and a flat sign. The SYN STR 1 part has a sustained chord with a flat sign. The POLYSYNTH part continues with the eighth-note rhythmic pattern and a flat sign.

109

DRUMS

FINGERDBAS

CLAVINET

SYN STR 1

POLYSYNTH



112

DRUMS

MUTED GTR

FINGERDBAS

CLAVINET

SYN STR 1

POLYSYNTH

114

DRUMS

MUTED GTR

FINGERDBAS

CLAVINET

SYN STR 1

POLYSYNTH



116

DRUMS

FINGERDBAS

CLAVINET

SYN STR 1

POLYSYNTH



119

DRUMS

FINGERDBAS

CLAVINET

SYN STR 1

POLYSYNTH

121

DRUMS

MUTED GTR

FINGERDBAS

CLAVINET

SYN STR 1

POLYSYNTH

The image shows a musical score for six instruments: DRUMS, MUTED GTR, FINGERDBAS, CLAVINET, SYN STR 1, and POLYSYNTH. The score is written in a multi-staff format. The DRUMS staff uses a double bar line and contains rhythmic notation with 'x' marks. The MUTED GTR staff uses a treble clef and contains rhythmic notation with 'x' marks. The FINGERDBAS staff uses a bass clef and contains rhythmic notation with 'x' marks. The CLAVINET staff uses a treble clef and contains rhythmic notation with 'x' marks. The SYN STR 1 staff uses a treble clef and contains rhythmic notation with 'x' marks. The POLYSYNTH staff uses a treble clef and contains rhythmic notation with 'x' marks. The score is divided into measures by vertical bar lines, and the first measure is marked with the number 121.

DRUMS

Teleac Rockscool & Styles - Disco Old

♩ = 109,001724

2

Two staves of musical notation for measures 1 and 2. The top staff shows a melodic line with eighth notes and quarter notes. The bottom staff shows a drum pattern with 'x' marks for cymbals and solid dots for other drums.

6

Four staves of musical notation for measures 3 through 6. The notation continues with a consistent drum pattern and melodic line.

9

Three staves of musical notation for measures 7 through 9.

12

Three staves of musical notation for measures 10 through 12.

15

Three staves of musical notation for measures 13 through 15.

18

Three staves of musical notation for measures 16 through 18.

21

Three staves of musical notation for measures 19 through 21.

24

Three staves of musical notation for measures 22 through 24.

27

Three staves of musical notation for measures 25 through 27.

30

Three staves of musical notation for measures 28 through 30.

V.S.

DRUMS

33

Drum notation for measures 33-35. The notation consists of two staves: a top staff with 'x' marks representing cymbals and a bottom staff with notes representing the drum kit. The pattern is a consistent 4/4 groove.

36

Drum notation for measures 36-38. The notation consists of two staves: a top staff with 'x' marks representing cymbals and a bottom staff with notes representing the drum kit. The pattern is a consistent 4/4 groove.

39

Drum notation for measures 39-41. The notation consists of two staves: a top staff with 'x' marks representing cymbals and a bottom staff with notes representing the drum kit. The pattern is a consistent 4/4 groove.

42

Drum notation for measures 42-44. The notation consists of two staves: a top staff with 'x' marks representing cymbals and a bottom staff with notes representing the drum kit. The pattern is a consistent 4/4 groove.

45

Drum notation for measures 45-47. The notation consists of two staves: a top staff with 'x' marks representing cymbals and a bottom staff with notes representing the drum kit. The pattern is a consistent 4/4 groove.

48

Drum notation for measures 48-50. The notation consists of two staves: a top staff with 'x' marks representing cymbals and a bottom staff with notes representing the drum kit. The pattern is a consistent 4/4 groove.

51

Drum notation for measures 51-53. The notation consists of two staves: a top staff with 'x' marks representing cymbals and a bottom staff with notes representing the drum kit. The pattern is a consistent 4/4 groove.

54

Drum notation for measures 54-56. The notation consists of two staves: a top staff with 'x' marks representing cymbals and a bottom staff with notes representing the drum kit. The pattern is a consistent 4/4 groove.

57

Drum notation for measures 57-59. The notation consists of two staves: a top staff with 'x' marks representing cymbals and a bottom staff with notes representing the drum kit. The pattern is a consistent 4/4 groove.

60

Drum notation for measures 60-62. The notation consists of two staves: a top staff with 'x' marks representing cymbals and a bottom staff with notes representing the drum kit. The pattern is a consistent 4/4 groove.

DRUMS

63

66

69

72

75

78

81

84

87

90

V.S.

DRUMS

93

96

99

102

105

108

111

114

117

120

Teleac Rockscool & Styles - Disco Old

MUTED GTR

♩ = 109,001724

17

20

25

47

8

8

65

4

71

6

79

2

83

2

88

2

92

5

99

3

MUTED GTR

104

106

112

114

116

♩ = 109,001724

3



8



12



16



20



24



28



32



36



40



V.S.



84



88



92



96



100



104



108



112



116



119



CHOIR AAHS

Teleac Rockscool & Styles - Disco Old

♩ = 109,001724

24 8

36

87

Teleac Rockscool & Styles - Disco Old

CLAVINET

♩ = 109,001724

3

7

10

13

16

19

22

26

29

32

V.S.



CLAVINET

68

71

75

78

81

84

87

90

93

97

100



104



107



110



113



116



119



Teleac Rockscool & Styles - Disco Old

SYN STR 1

♩ = 109,001724

3

12

21

30

39

48

54

62

69

77

V.S.

84



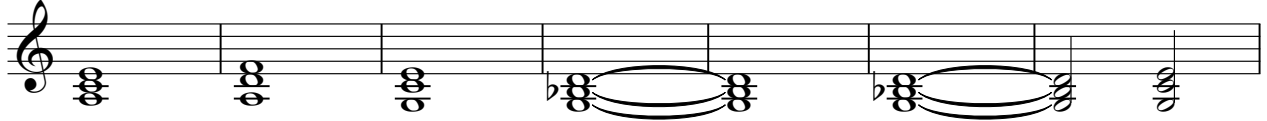
91



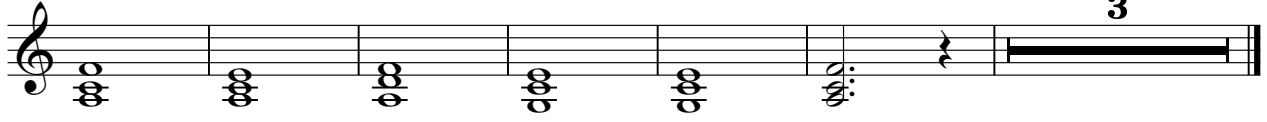
100



109



116



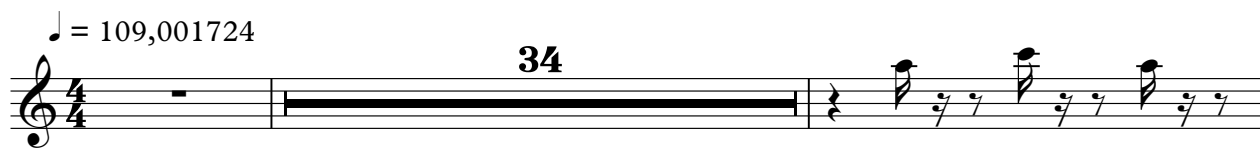
3

FANTASIA

Teleac Rockscool & Styles - Disco Old

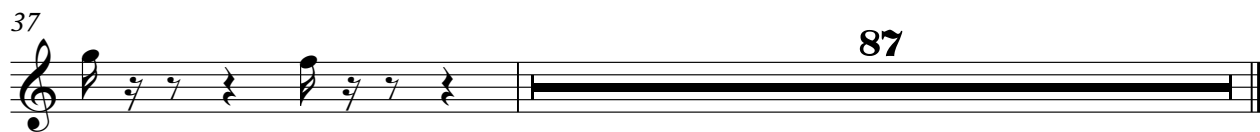
♩ = 109,001724

34



37

87



POLYSYNTH

Teleac Rockscool & Styles - Disco Old

♩ = 109,001724

3

7

10

13

16

19

22

25

28

31

Detailed description: The musical score is written on a single treble clef staff in 4/4 time. It begins with a tempo marking of 109,001724. The first measure is a whole rest. The second measure contains a triplet of eighth notes, indicated by a '3' above the staff. From the third measure onwards, the piece consists of a continuous eighth-note pattern. Each eighth note is beamed to a pair of notes, forming a consistent chordal accompaniment. The notes are primarily eighth notes with stems pointing downwards, and some measures include a flat sign for the bass note of the pair.

V.S.

34



37



40



43



46



49



52



55



58



61



POLYSYNTH

64



67



70



73



76



79



82



85



88



91



V.S.

94

97

100

103

106

109

112

115

118

120

3

STAR THEME

Teleac Rockscool & Styles - Disco Old

♩ = 109,001724

14

19

24

16

43

80