

Teleac Rockscool & Styles - Pop 6

♩ = 120,000000

DRUMS

SAW WAVE

FINGERDBAS

FRETLESS

BRASS 1



4

DRUMS

FINGERDBAS

BRASS 1

6

DRUMS

SAW WAVE

FINGERDBAS

FRETLESS

E.PIANO 2

POLYSYNTH

3



8

DRUMS

SAW WAVE

FINGERDBAS

FRETLESS

E.PIANO 2

POLYSYNTH

3

10

DRUMS

SAW WAVE

FINGERDBAS

FRETLESS

E.PIANO 2

POLYSYNTH

3



12

DRUMS

SAW WAVE

FINGERDBAS

FRETLESS

E.PIANO 2

POLYSYNTH

14

DRUMS

FINGERDBAS

FRETLESS

E.PIANO 2

BRASS 1

CHIFFER LD



15

DRUMS

FINGERDBAS

FRETLESS

E.PIANO 2

BRASS 1

CHIFFER LD

5

17

6

DRUMS

FINGERDBAS

FRETLESS

3

E.PIANO 2

BRASS 1

CHIFFER LD



19

3

DRUMS

FINGERDBAS

FRETLESS

6

BRASS 1

CHIFFER LD

21

DRUMS

FINGERDBAS

FRETLESS

E.PIANO 2

BRASS 1

CHIFFER LD

A.PIANO 1

6 3



23

DRUMS

FINGERDBAS

FRETLESS

E.PIANO 2

A.PIANO 1

25

DRUMS

FINGERDBAS

FRETLESS

E.PIANO 2

A.PIANO 1



27

DRUMS

FINGERDBAS

FRETLESS

E.PIANO 2

A.PIANO 1

28

DRUMS

FINGERDBAS

FRETLESS

E.PIANO 2

STRINGS

A.PIANO 1



30

ENGL.HORN

DRUMS

FINGERDBAS

FRETLESS

BRASS 1

STRINGS

A.PIANO 1

31

ENGL.HORN

DRUMS

FINGERDBAS

FRETLESS

STRINGS

A.PIANO 1

31



32

ENGL.HORN

DRUMS

FINGERDBAS

FRETLESS

STRINGS

A.PIANO 1

32

33

ENGL.HORN

DRUMS

FINGERDBAS

FRETLESS

STRINGS

A.PIANO 1

6

3

3



34

DRUMS

FINGERDBAS

FRETLESS

STRINGS

A.PIANO 1

6

35

DRUMS

FINGERDBAS

FRETLESS

STRINGS

A.PIANO 1

3



37

DRUMS

SAW WAVE

FINGERDBAS

FRETLESS

E.PIANO 2

BRASS 1

POLYSYNTH

A.PIANO 1

3

39

DRUMS

SAW WAVE

FINGERDBAS

FRETLESS

E.PIANO 2

POLYSYNTH



41

DRUMS

SAW WAVE

FINGERDBAS

FRETLESS

E.PIANO 2

POLYSYNTH

43

DRUMS

SAW WAVE

FINGERDBAS

FRETLESS

E.PIANO 2

POLYSYNTH



45

DRUMS

FINGERDBAS

FRETLESS

BRASS 1

CHIFFER LD

POLYSYNTH

46

ENGL.HORN

DRUMS

SAW WAVE

FINGERDBAS

FRETLESS

E.PIANO 2

BRASS 1

CHIFFER LD

POLYSYNTH

STRINGS

STRINGS

A.PIANO 1

ENGL.HORN

Teleac Rockscool & Styles - Pop 6

♩ = 120,000000

29

32

13 **2**

DRUMS

Teleac Rockscool & Styles - Pop 6

♩ = 120,000000

5

8

11

14

17

21

24

27

30

V.S.

2

DRUMS

33

6

3

36

39

42

6

45

SAW WAVE

Teleac Rockscool & Styles - Pop 6

♩ = 120,000000

4

8

3

12

24

39

3

3

3

2

2

43

3

2

2

$\text{♩} = 120,000000$

4

7

10

13

17

21

24

27

30

V.S.

34



38



41



44



46



FRETLESS

Teleac Rockscool & Styles - Pop 6

♩ = 120,000000

4

8

11

14

18

21

24

27

30

34

3

6

Detailed description: This image shows a bass guitar score for a piece titled 'Teleac Rockscool & Styles - Pop 6'. The score is written for a fretless instrument in 4/4 time, with a tempo of 120,000000. The key signature has one flat (B-flat). The notation is spread across ten staves, each starting with a measure number (4, 8, 11, 14, 18, 21, 24, 27, 30, 34). The music features a variety of rhythmic patterns, including eighth and sixteenth notes, and rests. There are several slurs and ties used throughout. In measures 18 and 30, there are bracketed groups of notes labeled '3' and '6' respectively, indicating triplets or sextuplets. The notation includes various accidentals (sharps, flats, naturals) and a double bar line at the end of the piece.

V.S.

2

FRETLESS

38



41



44



46



♩ = 120,000000

5

10

16

24

38

42

5

4

8

3

BRASS 1

Teleac Rockscool & Styles - Pop 6

♩ = 120,000000

3 8

14

16

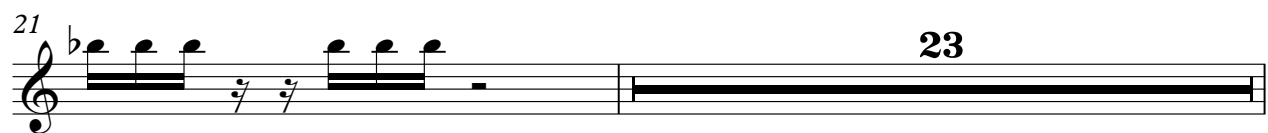
19

30

7 3 7

45

46



♩ = 120,000000

5 3

8 3

10 3

13 24

39 3 3

41 3

43

45 2

STRINGS

Teleac Rockscool & Styles - Pop 6

♩ = 120,000000

33

36

10 **2**

STRINGS

Teleac Rockscool & Styles - Pop 6

♩ = 120,000000

28

Musical notation for strings, measures 28-31. Measure 28 is a whole rest. Measures 29-31 contain chords and moving lines in bass and treble clefs.

32

13

2

Musical notation for strings, measures 32-34. Measure 32 contains chords and moving lines. Measures 33-34 are whole rests.

Teleac Rockscool & Styles - Pop 6

A.PIANO 1

♩ = 120,000000

21

23

25

27

29

31

32

33

34

35

V.S.

A.PIANO 1

2