

Beatles - A Hard Day`s Night

♩ = 140,000473 ♩ = 140,000473

Alto Saxophone

HARD_DAY

Alto Saxophone

Percussion

♩ = 140,000473 ♩ = 140,000473

Electric Guitar

Electric Guitar

Electric Guitar

Acoustic Bass

This system of the musical score covers measures 1 through 5. It features five staves: two for Alto Saxophone, one for Percussion, and three for Electric Guitar and Acoustic Bass. The tempo is marked as ♩ = 140,000473. The time signature starts in 4/4 and changes to 3/4 at the beginning of measure 4, then returns to 4/4 in measure 5. The Alto Saxophone part includes the lyrics 'HARD_DAY' under the first three measures. The Percussion part shows a simple drum pattern. The Electric Guitar parts include a melodic line in the top staff and a chordal accompaniment in the middle and bottom staves. The Acoustic Bass part provides a steady bass line.

6

Alto Sax.

Perc.

E. Gtr.

A. Bass

This system of the musical score covers measures 6 through 9. It features four staves: Alto Sax., Perc., E. Gtr., and A. Bass. The Alto Saxophone part continues with a melodic line. The Percussion part features a complex, rhythmic pattern with many sixteenth notes. The Electric Guitar part consists of a series of chords, some with accents. The Acoustic Bass part continues with a steady bass line.

8

Alto Sax.

Perc.

E. Gtr.

A. Bass

10

Alto Sax.

Perc.

E. Gtr.

A. Bass

16

Alto Sax.

Perc.

E. Gtr.

A. Bass

18

Alto Sax.

Perc.

E. Gtr.

A. Bass

20

Alto Sax.

Perc.

E. Gtr.

A. Bass

22

Alto Sax.

Perc.

E. Gtr.

A. Bass

24

Alto Sax.

Alto Sax.

Perc.

E. Gtr.

A. Bass

26

Alto Sax.

Alto Sax.

Perc.

E. Gtr.

A. Bass

28

Alto Sax.

Perc.

E. Gtr.

A. Bass

30

Alto Sax.

Perc.

E. Gtr.

A. Bass

32

Alto Sax.

Perc.

E. Gtr.

A. Bass

34

Alto Sax.

Perc.

E. Gtr.

A. Bass

37

Alto Sax.

Perc.

E. Gtr.

A. Bass

39

Alto Sax.

Perc.

E. Gtr.

A. Bass

41

Alto Sax.

Perc.

E. Gtr.

A. Bass

43

Alto Sax.

Perc.

E. Gtr.

A. Bass

45

Alto Sax.

Alto Sax.

Perc.

E. Gtr.

A. Bass

47

Alto Sax.

Alto Sax.

Perc.

E. Gtr.

A. Bass

49

Alto Sax.

Perc.

E. Gtr.

E. Gtr.

E. Gtr.

A. Bass

51

Perc.

E. Gtr.

E. Gtr.

E. Gtr.

A. Bass

53

Perc.

E. Gtr.

E. Gtr.

E. Gtr.

A. Bass

56

Alto Sax.

Alto Sax.

Perc.

E. Gtr.

E. Gtr.

E. Gtr.

A. Bass

58

Alto Sax.

Alto Sax.

Perc.

E. Gtr.

E. Gtr.

A. Bass

60

Alto Sax.

Perc.

E. Gtr.

A. Bass

62

Alto Sax.

Perc.

E. Gtr.

A. Bass

64

Alto Sax.

Perc.

E. Gtr.

A. Bass

66

Alto Sax.

Perc.

E. Gtr.

A. Bass

68

Alto Sax.

Perc.

E. Gtr.

A. Bass

70

Alto Sax.

Perc.

E. Gtr.

A. Bass

72

Alto Sax.

Perc.

E. Gtr.

A. Bass

74

Alto Sax.

Perc.

E. Gtr.

A. Bass

76

Alto Sax.

Alto Sax.

Perc.

E. Gtr.

A. Bass

78

Alto Sax.

Alto Sax.

Perc.

E. Gtr.

A. Bass

80

Alto Sax.

Perc.

E. Gtr.

A. Bass

3

82

Alto Sax.

Perc.

E. Gtr.

A. Bass

3

84

Alto Sax.

Perc.

E. Gtr.

E. Gtr.

A. Bass

87

E. Gtr.

90

E. Gtr.

Alto Saxophone

Beatles - A Hard Day`s Night

♩ = 140,000473 ♩ = 140,000473

2 8

14

9

26

17

46

9

58

17

77

12

92

2

Alto Saxophone

50 **7**

60

65

70

75

79

83 **6**

92 **2**

Beatles - A Hard Day`s Night

Percussion

♩ = 140,000473 ♩ = 140,000473

2

7

9

11

13

15

17

19

21

23

V.S.

25

Two staves of music. The top staff contains a series of eighth notes with stems pointing down, grouped in pairs. The bottom staff contains a series of eighth notes with stems pointing up, grouped in pairs. The two staves are aligned to form a rhythmic accompaniment.

27

Two staves of music. The top staff contains a series of eighth notes with stems pointing down, grouped in pairs. The bottom staff contains a series of eighth notes with stems pointing up, grouped in pairs. The two staves are aligned to form a rhythmic accompaniment.

29

Two staves of music. The top staff contains a series of eighth notes with stems pointing down, grouped in pairs. The bottom staff contains a series of eighth notes with stems pointing up, grouped in pairs. The two staves are aligned to form a rhythmic accompaniment.

32

Two staves of music. The top staff contains a series of eighth notes with stems pointing down, grouped in pairs. The bottom staff contains a series of eighth notes with stems pointing up, grouped in pairs. The two staves are aligned to form a rhythmic accompaniment.

35

Two staves of music. The top staff contains a series of eighth notes with stems pointing down, grouped in pairs. The bottom staff contains a series of eighth notes with stems pointing up, grouped in pairs. The two staves are aligned to form a rhythmic accompaniment.

38

Two staves of music. The top staff contains a series of eighth notes with stems pointing down, grouped in pairs. The bottom staff contains a series of eighth notes with stems pointing up, grouped in pairs. The two staves are aligned to form a rhythmic accompaniment.

40

Two staves of music. The top staff contains a series of eighth notes with stems pointing down, grouped in pairs. The bottom staff contains a series of eighth notes with stems pointing up, grouped in pairs. The two staves are aligned to form a rhythmic accompaniment.

42

Two staves of music. The top staff contains a series of eighth notes with stems pointing down, grouped in pairs. The bottom staff contains a series of eighth notes with stems pointing up, grouped in pairs. The two staves are aligned to form a rhythmic accompaniment.

44

Two staves of music. The top staff contains a series of eighth notes with stems pointing down, grouped in pairs. The bottom staff contains a series of eighth notes with stems pointing up, grouped in pairs. The two staves are aligned to form a rhythmic accompaniment.

46

Two staves of music. The top staff contains a series of eighth notes with stems pointing down, grouped in pairs. The bottom staff contains a series of eighth notes with stems pointing up, grouped in pairs. The two staves are aligned to form a rhythmic accompaniment.

Percussion

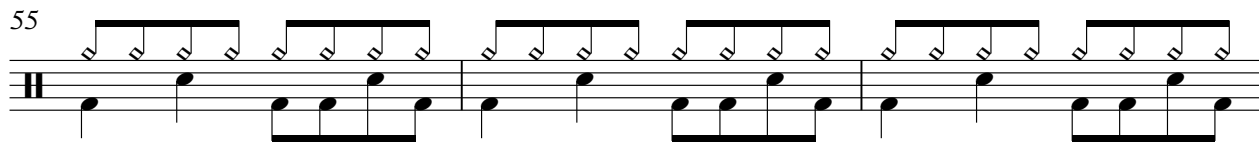
48



51



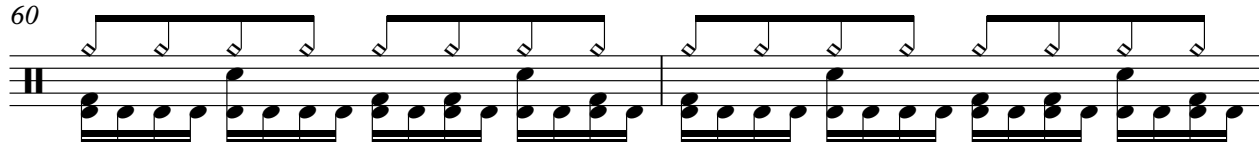
55



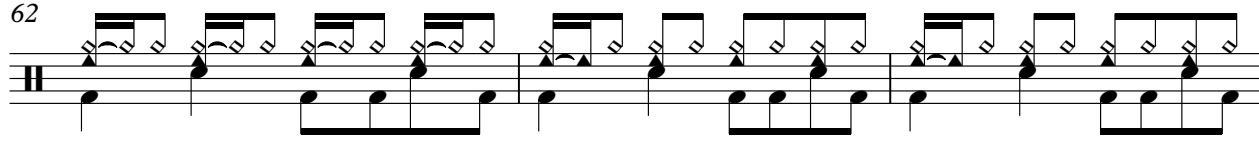
58



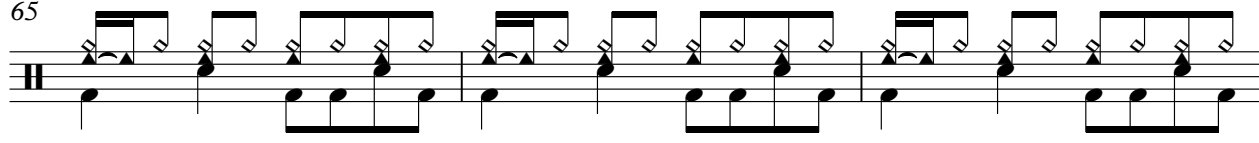
60



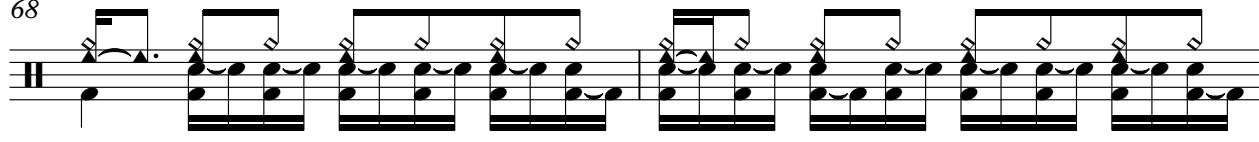
62



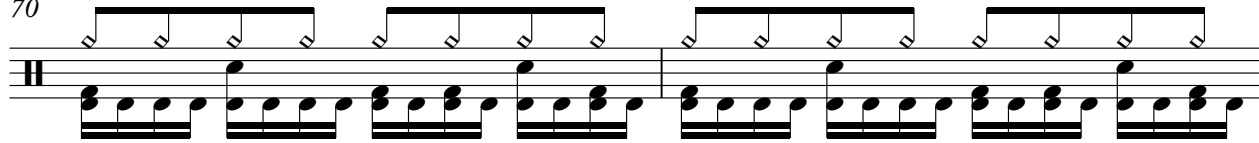
65



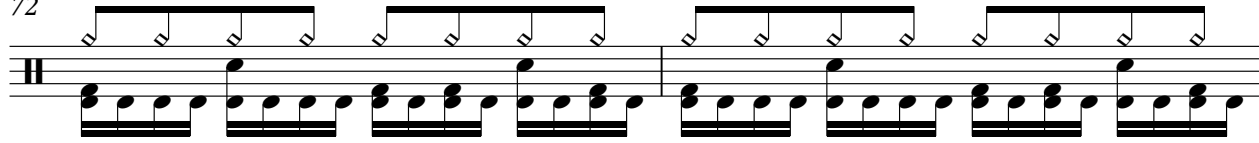
68



70



72



V.S.

Percussion

74

76

78

80

82

84

92

Electric Guitar

Beatles - A Hard Day`s Night

♩ = 140,000473 ♩ = 140,000473

2

7

11

15

18

21

25

28

32

35

V.S.

38



41



45



48



52



56



59



62



65



68



71



75



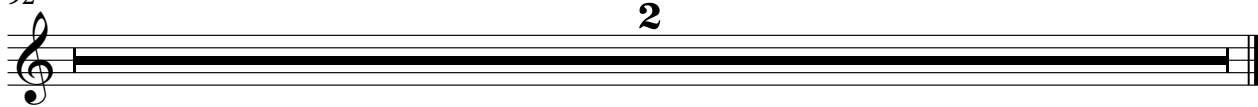
79



83



92



♩ = 140,000473 ♩ = 140,000473

2 44

50

55

60 25

88

92

♩ = 140,000473 ♩ = 140,000473

2 45

51

55

34

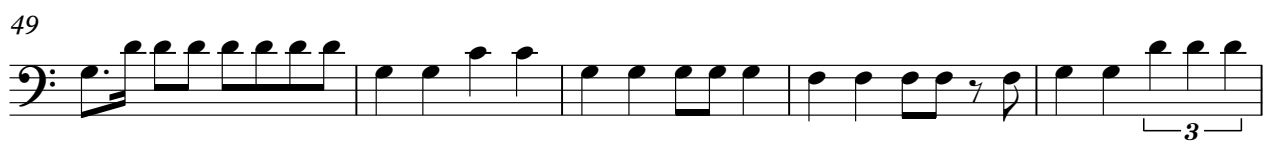
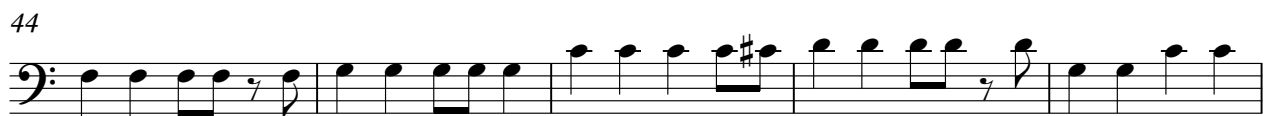
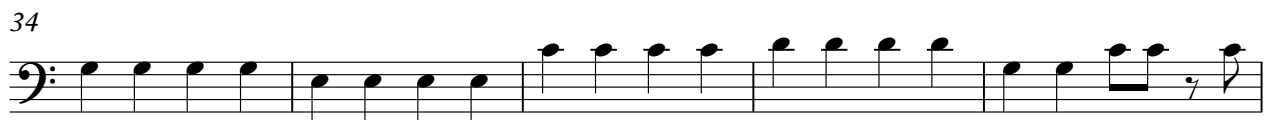
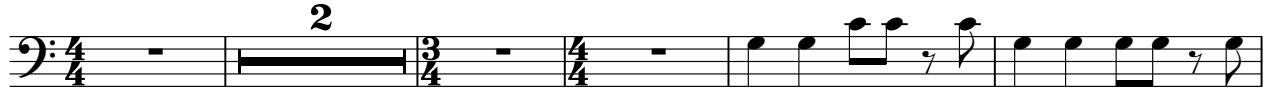
92

2

Beatles - A Hard Day`s Night

Acoustic Bass

♩ = 140,000473 ♩ = 140,000473



3 V.S.

54



59



65



70



75



80



84



92

