

the Pet Shop Boys - Opportunities (let`s Make Lots Of M

♩ = 120,999947

Drums **4/4**

4

Drums

7

Drums

Bassline

Synth

10

Drums

Bassline

Synth

The image displays a musical score for the song 'Opportunities' by the Pet Shop Boys. It is set in 4/4 time with a tempo of 120,999947. The score is divided into three systems. The first system (measures 1-3) features a drum pattern with a steady bass drum and snare, and a synth accompaniment of eighth-note chords. The second system (measures 4-6) includes a bassline that begins in measure 5, playing a simple eighth-note pattern. The third system (measures 7-9) shows a more complex drum pattern with a hi-hat and a bassline that continues the eighth-note pattern. The synth part in the third system plays a melodic line of eighth notes.

@I1985 Cage Music Ltd./10 Music Ltd.

13

Drums

Bassline

Synth

16

Drums

Synth

18

Drums

20

Drums

22

Drums

Melody

24

Drums

Melody

Bassline

Synth

Guitar Riffs

Detailed description: This block contains the musical notation for measures 24 and 25. It features five staves: Drums, Melody, Bassline, Synth, and Guitar Riffs. The key signature is B-flat major (two flats). The drum part shows a consistent pattern of snare and hi-hat hits. The melody consists of eighth and quarter notes with some rests. The bassline is a simple eighth-note pattern. The synth part features a dense, rhythmic chordal accompaniment. The guitar riffs are sparse, with some eighth-note patterns.

26

Drums

Melody

Bassline

Synth

Guitar Riffs

Detailed description: This block contains the musical notation for measures 26 and 27. It features five staves: Drums, Melody, Bassline, Synth, and Guitar Riffs. The key signature is B-flat major (two flats). The drum part continues with a similar pattern to the previous measures. The melody includes a triplet of eighth notes in measure 27. The bassline continues with a steady eighth-note pattern. The synth part maintains its dense, rhythmic accompaniment. The guitar riffs are consistent with the previous section.

28

Drums

Melody

Bassline

Synth

Guitar Riffs

30

Drums

Melody

Bassline

Synth

Guitar Riffs

32

Drums

Melody

Bassline

34

Drums

Melody

Bassline

36

Drums

Melody

Bassline

38

Drums

Melody

Bassline

40

Drums

Melody

Bassline

Synth

Guitar Riffs

42

Drums

Melody

Bassline

Synth

Guitar Riffs

44

Drums

Melody

Bassline

Synth

Guitar Riffs

Detailed description: This block contains the musical notation for measures 44 and 45. It features five staves: Drums, Melody, Bassline, Synth, and Guitar Riffs. The key signature is B-flat major (two flats). The drum part shows a complex pattern with various note values and rests. The melody part has a treble clef and includes a triplet of eighth notes in measure 44. The bassline part has a bass clef and consists of a steady eighth-note pattern. The synth part has a bass clef and features a sequence of chords with a rhythmic pattern of eighth notes. The guitar riffs part has a treble clef and shows a sequence of chords and notes.

46

Drums

Melody

Bassline

Synth

Guitar Riffs

Detailed description: This block contains the musical notation for measures 46 and 47. It features five staves: Drums, Melody, Bassline, Synth, and Guitar Riffs. The key signature is B-flat major (two flats). The drum part continues the pattern from the previous measures. The melody part has a treble clef and includes a triplet of eighth notes in measure 46. The bassline part has a bass clef and consists of a steady eighth-note pattern. The synth part has a bass clef and features a sequence of chords with a rhythmic pattern of eighth notes. The guitar riffs part has a treble clef and shows a sequence of chords and notes.

48

Drums

Melody

Bassline

Synth

Guitar Riffs

50

Drums

Melody

Bassline

Brass

Guitar Riffs

52

Drums

Melody

Bassline

Brass

Guitar Riffs

Detailed description: This block contains the musical notation for measures 52 and 53. It features five staves: Drums, Melody, Bassline, Brass, and Guitar Riffs. The Drums staff shows a complex rhythmic pattern with various note values and rests. The Melody staff is in a treble clef with a key signature of two flats, showing a sequence of notes and rests. The Bassline staff is in a bass clef with a key signature of two flats, featuring a steady eighth-note pattern. The Brass staff is in a treble clef with a key signature of two flats, showing a few notes and rests. The Guitar Riffs staff is in a treble clef with a key signature of two flats, showing a few notes and rests.

54

Drums

Melody

Bassline

Brass

Guitar Riffs

Detailed description: This block contains the musical notation for measures 54 and 55. It features five staves: Drums, Melody, Bassline, Brass, and Guitar Riffs. The Drums staff shows a complex rhythmic pattern with various note values and rests. The Melody staff is in a treble clef with a key signature of two flats, showing a sequence of notes and rests. The Bassline staff is in a bass clef with a key signature of two flats, featuring a steady eighth-note pattern. The Brass staff is in a treble clef with a key signature of two flats, showing a few notes and rests. The Guitar Riffs staff is in a treble clef with a key signature of two flats, showing a few notes and rests.

56

Drums

Melody

Bassline

58

Drums

Melody

Bassline

Guitar Riffs

60

Drums

Melody

Bassline

Guitar Riffs

62

Drums

Melody

Bassline

Guitar Riffs

64

Drums

Melody

Bassline

Guitar Riffs

66

Drums

Melody

Bassline

Synth

Guitar Riffs

68

Drums

Melody

Bassline

Synth

Guitar Riffs

70

Drums

Melody

Bassline

Synth

Guitar Riffs

72

Drums

Melody

Bassline

Synth

Brass

Guitar Riffs

Detailed description: This block contains the musical notation for measures 72 and 73. The score is arranged in a vertical stack of six staves. The top staff is for Drums, showing a complex rhythmic pattern with various note values and rests. The second staff is for Melody, written in a treble clef with a key signature of three flats. The third staff is for Bassline, written in a bass clef with the same key signature. The fourth staff is for Synth, showing a series of chords in a bass clef. The fifth staff is for Brass, written in a treble clef with the same key signature. The bottom staff is for Guitar Riffs, written in a treble clef with the same key signature. The notation includes various musical symbols such as stems, beams, and rests.

74

Drums

Bassline

Synth

Brass

Guitar Riffs

Detailed description: This block contains the musical notation for measures 74 and 75. The score is arranged in a vertical stack of five staves. The top staff is for Drums, showing a complex rhythmic pattern with various note values and rests. The second staff is for Bassline, written in a bass clef with a key signature of three flats. The third staff is for Synth, showing a series of chords in a bass clef. The fourth staff is for Brass, written in a treble clef with the same key signature. The bottom staff is for Guitar Riffs, written in a treble clef with the same key signature. The notation includes various musical symbols such as stems, beams, and rests.

76

Drums

Melody

Bassline

Synth

Brass

Guitar Riffs

Detailed description: This block contains the musical notation for measures 76 and 77. The score is arranged in six staves. The top staff is for Drums, showing a complex rhythmic pattern with various note values and rests. The second staff is for Melody, featuring a treble clef, a key signature of two flats, and a triplet of eighth notes in measure 77. The third staff is for Bassline, with a bass clef and a steady eighth-note rhythm. The fourth staff is for Synth, showing a sequence of chords with a consistent rhythmic pulse. The fifth staff is for Brass, with a treble clef and a few notes in measure 77. The bottom staff is for Guitar Riffs, showing a sequence of notes with a consistent rhythmic pulse.

78

Drums

Bassline

Synth

Brass

Guitar Riffs

Detailed description: This block contains the musical notation for measures 78 and 79. The score is arranged in six staves. The top staff is for Drums, showing a complex rhythmic pattern with various note values and rests. The second staff is for Bassline, with a bass clef and a steady eighth-note rhythm. The third staff is for Synth, showing a sequence of chords with a consistent rhythmic pulse. The fourth staff is for Brass, with a treble clef and a melodic line consisting of several notes. The bottom staff is for Guitar Riffs, showing a sequence of notes with a consistent rhythmic pulse.

80

Drums

Bassline

Synth

Brass

Guitar Riffs

Detailed description: This block contains the musical notation for measures 80 and 81. The Drums part features a complex, syncopated pattern with many accents. The Bassline is in a low register, primarily using quarter and eighth notes. The Synth part consists of a series of chords, mostly triads, with a consistent rhythmic pulse. The Brass part is mostly silent, with a few notes in measure 81. The Guitar Riffs part shows a rhythmic pattern of eighth notes in measure 80, followed by a rest in measure 81.

82

Drums

Bassline

Synth

Brass

Guitar Riffs

Detailed description: This block contains the musical notation for measures 82 and 83. The Drums part continues with a similar syncopated pattern. The Bassline has a more active role in measure 82, including some eighth-note runs. The Synth part continues with its chordal texture. The Brass part has a melodic line with a slur over two measures. The Guitar Riffs part has a rhythmic pattern in measure 82 and a rest in measure 83.

84

This system contains measures 84 and 85. The Drums part features a consistent pattern of eighth notes on the snare and bass drums. The Melody is in the treble clef with a key signature of two flats, showing a sequence of eighth notes. The Bassline is in the bass clef, also with a key signature of two flats, featuring a steady eighth-note pattern. The Synth part consists of a series of chords in the bass clef, each marked with a slash and a vertical line, indicating a specific sound or effect. The Brass part is mostly silent, with a few notes in measure 85. The Guitar Riffs part shows a sequence of notes in the treble clef, with a key signature of two flats, including some rests.

86

This system contains measures 86 and 87. The Drums part continues with the same eighth-note pattern. The Melody part shows a continuation of the eighth-note sequence, with some notes beamed together. The Bassline part maintains the eighth-note pattern, with some notes beamed together.

88

This system contains measures 88 and 89. The Drums part continues with the same eighth-note pattern. The Melody part shows a continuation of the eighth-note sequence, with some notes beamed together. The Bassline part maintains the eighth-note pattern, with some notes beamed together.

90

Drums

Melody

Bassline

This system contains measures 90 and 91. The drums part features a consistent pattern of eighth notes with accents. The melody is in a B-flat major key signature and consists of eighth notes. The bassline is a steady eighth-note accompaniment.

92

Drums

Melody

Bassline

This system contains measures 92 and 93. The drums part continues with the same eighth-note pattern. The melody and bassline continue with similar rhythmic patterns.

94

Drums

Melody

Bassline

Synth

Brass

Guitar Riffs

This system contains measures 94, 95, 96, and 97. Measure 94 includes a triplet in the melody and a drum accent. Measures 95-97 show a key signature change to C major (indicated by three sharps) and the introduction of new parts: Synth, Brass, and Guitar Riffs.

96

Drums

Melody

Bassline

Synth

Brass

Guitar Riffs

Detailed description: This system contains measures 96 and 97. The Drums part features a complex, syncopated rhythm with many accents. The Melody part is in treble clef with a key signature of three sharps (F#, C#, G#) and contains a few notes with rests. The Bassline part is in bass clef with the same key signature and consists of a simple, rhythmic line. The Synth part is in bass clef with the same key signature and features a dense, repetitive chordal texture. The Brass part is in treble clef with the same key signature and has a few notes with rests. The Guitar Riffs part is in treble clef with the same key signature and contains a few notes with rests.

98

Drums

Melody

Bassline

Synth

Brass

Guitar Riffs

Detailed description: This system contains measures 98 and 99. The Drums part continues with a complex, syncopated rhythm with many accents. The Melody part is in treble clef with a key signature of three sharps (F#, C#, G#) and contains a few notes with rests. The Bassline part is in bass clef with the same key signature and consists of a simple, rhythmic line. The Synth part is in bass clef with the same key signature and features a dense, repetitive chordal texture. The Brass part is in treble clef with the same key signature and has a few notes with rests. The Guitar Riffs part is in treble clef with the same key signature and contains a few notes with rests.

100

Drums

Melody

Bassline

Synth

Brass

Guitar Riffs

Detailed description: This system of musical notation covers measures 100 and 101. The Drums part features a complex, syncopated pattern with various note values and rests. The Melody is written in a treble clef with a key signature of three sharps (F#, C#, G#) and contains several eighth and quarter notes. The Bassline is in a bass clef with a key signature of three sharps, featuring a steady eighth-note pattern. The Synth part consists of a series of chords in a bass clef, each with a slash indicating a specific voicing. The Brass part is in a treble clef with a key signature of three sharps, showing a few notes in the first measure of the system. The Guitar Riffs part is in a treble clef with a key signature of three sharps, showing a few notes in the second measure of the system.

102

Drums

Melody

Bassline

Synth

Brass

Guitar Riffs

Detailed description: This system of musical notation covers measures 102 and 103. The Drums part continues the syncopated pattern from the previous system. The Melody is in a treble clef with a key signature of three sharps, featuring a mix of eighth and quarter notes. The Bassline is in a bass clef with a key signature of three sharps, showing a steady eighth-note pattern. The Synth part consists of a series of chords in a bass clef, each with a slash indicating a specific voicing. The Brass part is in a treble clef with a key signature of three sharps, showing a few notes in the first measure of the system. The Guitar Riffs part is in a treble clef with a key signature of three sharps, showing a few notes in the second measure of the system.

104

Drums
Melody
Bassline
Synth
Brass
Guitar Riffs

This musical score block covers measures 104 and 105. It features six staves: Drums, Melody, Bassline, Synth, Brass, and Guitar Riffs. The key signature is three sharps (F#, C#, G#). The drums play a consistent pattern of eighth notes with accents. The melody consists of eighth notes and rests. The bassline features a mix of eighth and quarter notes. The synth part is a dense block of chords. The brass and guitar riffs have sparse, rhythmic patterns.

106

Drums
Melody
Bassline
Synth
Brass

This musical score block covers measures 106 and 107. It features five staves: Drums, Melody, Bassline, Synth, and Brass. The key signature remains three sharps. The drums continue with the same eighth-note pattern. The melody has a few notes in measure 106 and rests in measure 107. The bassline continues with eighth and quarter notes. The synth part remains a block of chords. The brass part has a rhythmic pattern of eighth notes.

108

Drums

Bassline

Synth

Brass

Guitar Riffs

110

Drums

Bassline

Synth

Brass

the Pet Shop Boys - Opportunities (let`s Make Lots Of M

Drums

♩ = 120,999947

Measures 1-4: Drum notation in 4/4 time. The top staff shows a consistent pattern of eighth notes with stems pointing up. The bottom staff shows a consistent pattern of eighth notes with stems pointing down.

5

Measures 5-8: Drum notation. Measures 5-6 continue the previous pattern. Measures 7-8 feature a change in the top staff with eighth notes and a triplet of eighth notes, while the bottom staff continues with eighth notes.

9

Measures 9-12: Drum notation. Measures 9-10 continue the previous pattern. Measures 11-12 feature a change in the top staff with eighth notes and a triplet of eighth notes, while the bottom staff continues with eighth notes.

13

Measures 13-15: Drum notation. Measures 13-14 continue the previous pattern. Measure 15 features a change in the top staff with eighth notes and a triplet of eighth notes, while the bottom staff continues with eighth notes.

16

Measures 16-18: Drum notation. Measures 16-17 continue the previous pattern. Measure 18 features a change in the top staff with eighth notes and a triplet of eighth notes, while the bottom staff continues with eighth notes.

19

Measures 19-20: Drum notation. Measures 19-20 continue the previous pattern. Measure 20 features a triplet of eighth notes in the top staff.

21

Measures 21-23: Drum notation. Measures 21-22 continue the previous pattern. Measure 23 features a change in the top staff with eighth notes and a triplet of eighth notes, while the bottom staff continues with eighth notes.

24

Measures 24-26: Drum notation. Measures 24-25 continue the previous pattern. Measure 26 features a change in the top staff with eighth notes and a triplet of eighth notes, while the bottom staff continues with eighth notes.

27

Measures 27-28: Drum notation. Measures 27-28 continue the previous pattern. Measure 28 features a triplet of eighth notes in the top staff.

29

Measures 29-31: Drum notation. Measures 29-30 continue the previous pattern. Measure 31 features a change in the top staff with eighth notes and a triplet of eighth notes, while the bottom staff continues with eighth notes.

©1985 Cage Music Ltd./10 Music Ltd.

V.S.

32

35

38

41

44

46

49

52

55

57

59

62

65

67

70

72

75

77

79

82

85

88

91

94

96

99

102

105

108

the Pet Shop Boys - Opportunities (let`s Make Lots Of M

Melody

♩ = 120,999947

22

26

30

34

38

42

46

50

54

@I1985 Cage Music Ltd./10 Music Ltd.

the Pet Shop Boys - Opportunities (let`s Make Lots Of M

Bassline

♩ = 120,999947

7



12



24



29



33



35



37



39



43



48



51



53



55



57



59



61



63



65



68



73



Synth

the Pet Shop Boys - Opportunities (let`s Make Lots Of M

♩ = 120,999947

6

11

16

7

25

27

29

31

9

@I1985 Cage Music Ltd./10 Music Ltd.

41



43



45



47



67



69



71



74



76



78



80



82



84



95



97



99



101



103



105



107

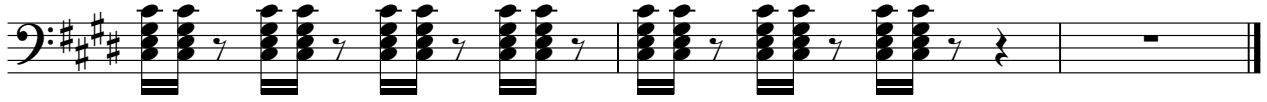


V.S.

4

Synth

109



the Pet Shop Boys - Opportunities (let`s Make Lots Of M

Brass

♩ = 120,999947

39

9

51

18

73

78

83

9

95

100

106

109

©1985 Cage Music Ltd./10 Music Ltd.

Guitar Riffs

the Pet Shop Boys - Opportunities (let`s Make Lots Of M

♩ = 120,999947

23

27 9

40

45

49

53 2

58

63

67 2

72

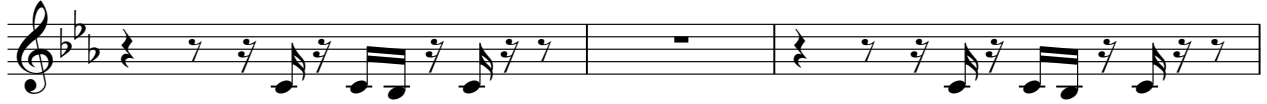
Detailed description: This image shows a series of ten musical staves for guitar riffs. The first staff (measures 23-26) starts with a tempo marking of 120,999947 and a measure number of 23. It features a 4/4 time signature and a key signature of two flats. The riff consists of a sequence of eighth notes and quarter notes, with some measures containing rests. The second staff (measures 27-33) starts at measure 27 and ends at measure 33 with a measure number of 9. It features a 2/4 time signature. The third staff (measures 40-44) starts at measure 40 and features a 2/4 time signature. The fourth staff (measures 45-48) starts at measure 45. The fifth staff (measures 49-52) starts at measure 49. The sixth staff (measures 53-57) starts at measure 53 and ends at measure 57 with a measure number of 2. The seventh staff (measures 58-62) starts at measure 58 and features a key signature change to one flat. The eighth staff (measures 63-66) starts at measure 63. The ninth staff (measures 67-71) starts at measure 67 and ends at measure 71 with a measure number of 2. The tenth staff (measures 72-75) starts at measure 72.

@I1985 Cage Music Ltd./10 Music Ltd.

76



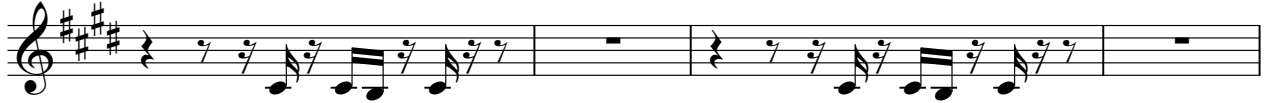
80



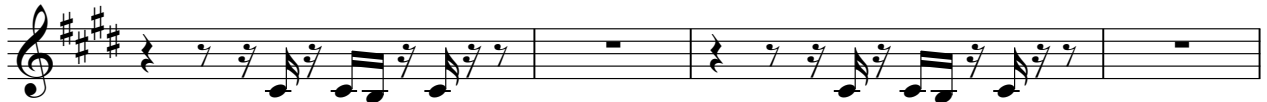
83



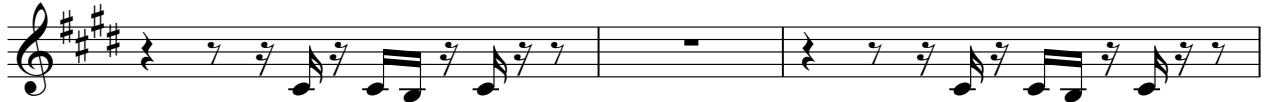
95



99



103



106

