

Tony Braxton - Your Makin` Me High

♩ = 92,499947

BD
Hhths
Toms
SD
Shakers
Saw
Guitar
Bass
Organ
Marcato
Strings
Piano

♩ = 92,499947

Detailed description: This block contains the first four measures of the musical score. The tempo is marked as ♩ = 92,499947. The score is for a 4/4 piece. The instruments listed are BD (Bass Drum), Hhths (Hi-Hats), Toms, SD (Snare Drum), Shakers, Saw (Sawtooth Synth), Guitar, Bass, Organ, Marcato (Maracas), Strings, and Piano. The organ part is silent. The guitar and bass parts feature a complex, syncopated rhythmic pattern. The percussion parts (BD, Hhths, Toms, SD, Shakers) provide a steady, driving accompaniment.



5

BD
Hhths
Toms
SD
Shakers
Saw
Guitar
Bass

Detailed description: This block contains measures 5 through 8 of the musical score. The tempo remains ♩ = 92,499947. The instrumentation is consistent with the previous block, but the Organ, Marcato, Strings, and Piano parts are silent. The rhythmic patterns for the guitar, bass, and percussion continue, with some melodic development in the guitar and bass lines.

8

BD
Hhts
Toms
SD
Shakers
Saw
Guitar
Bass



12

BD
Hhts
Toms
SD
Shakers
Guitar
Bass



16

BD
Hhts
Toms
SD
Shakers
Guitar
Bass

20

BD
Hhts
Toms
SD
Shakers
Guitar
Bass

Detailed description: This musical score covers measures 20 through 23. It features seven staves: BD (Bass Drum), Hhts (Hi-Hats), Toms, SD (Snare Drum), Shakers, Guitar, and Bass. The BD and Hhts parts are relatively simple, with the Hhts playing a consistent rhythmic pattern. The Toms and SD parts have more complex rhythmic patterns. The Shakers part has a melodic line with some grace notes. The Guitar and Bass parts are more intricate, with the Guitar playing a complex, fast-paced melody and the Bass providing a steady, rhythmic accompaniment.



24

BD
Hhts
Toms
SD
Shakers
Saw
Guitar
Bass

Detailed description: This musical score covers measures 24 through 27. It features eight staves: BD, Hhts, Toms, SD, Shakers, Saw, Guitar, and Bass. The BD and Hhts parts are consistent with the previous section. The Toms and SD parts have similar rhythmic patterns. The Shakers part continues its melodic line. The Saw part is a new addition, playing a simple, rhythmic melody. The Guitar and Bass parts continue their respective parts from the previous section, with the Guitar playing a complex, fast-paced melody and the Bass providing a steady, rhythmic accompaniment.

27

BD
Hhts
Toms
SD
Shakers
Saw
Guitar
Bass

Detailed description: This musical score covers measures 27 through 30. The instruments are arranged vertically from top to bottom: BD (Bass Drum), Hhts (Hi-Hats), Toms, SD (Snare Drum), Shakers, Saw (Saw), Guitar, and Bass. The BD and Hhts parts are relatively simple, with the BD playing a steady quarter-note pattern and the Hhts playing a consistent eighth-note pattern. The Toms part features a pattern of quarter notes with rests. The SD part consists of a steady quarter-note pattern. The Shakers part has a more complex rhythmic pattern with eighth and sixteenth notes. The Saw part is a melodic line in treble clef with various intervals and rests. The Guitar part is a complex, fast-moving line with many sixteenth notes and chords. The Bass part is a steady eighth-note pattern.



31

BD
Hhts
Toms
SD
Shakers
Saw
Guitar
Bass

Detailed description: This musical score covers measures 31 through 34. The instruments and their parts are the same as in the previous section. The BD and Hhts parts continue their respective patterns. The Toms part has a similar pattern to the previous section. The SD part continues with a steady quarter-note pattern. The Shakers part has a similar pattern to the previous section. The Saw part is a melodic line in treble clef with various intervals and rests. The Guitar part is a complex, fast-moving line with many sixteenth notes and chords. The Bass part is a steady eighth-note pattern.

35

BD
Hhts
Toms
SD
Shakers
Guitar
Bass

Detailed description: This musical score covers measures 35 to 38. It features seven staves: BD (Bass Drum), Hhts (Hi-Hats), Toms, SD (Snare Drum), Shakers, Guitar, and Bass. The BD and Hhts parts are simple, with the BD playing a steady quarter-note pattern and the Hhts playing a consistent eighth-note pattern. The Toms part has a sparse pattern of eighth notes. The SD part plays a pattern of quarter notes. The Shakers part has a rhythmic pattern of eighth notes. The Guitar part is a complex, multi-measure rest followed by a series of chords. The Bass part plays a rhythmic pattern of eighth notes.



39

BD
Hhts
Toms
SD
Shakers
Guitar
Bass
Strings

Detailed description: This musical score covers measures 39 to 42. It features eight staves: BD, Hhts, Toms, SD, Shakers, Guitar, Bass, and Strings. The BD and Hhts parts continue from the previous section. The Toms part has a sparse pattern of eighth notes. The SD part plays a pattern of quarter notes. The Shakers part has a rhythmic pattern of eighth notes. The Guitar part is a complex, multi-measure rest followed by a series of chords. The Bass part plays a rhythmic pattern of eighth notes. The Strings part is a simple, multi-measure rest.

43

BD
Hhths
Toms
SD
Shakers
Guitar
Bass
Strings

Detailed description: This musical score block covers measures 43, 44, and 45. It features seven staves: BD (Bass Drum), Hhths (Hi-Hats), Toms, SD (Snare Drum), Shakers, Guitar, and Bass. The BD, Hhths, and Toms staves are in a 2/4 time signature. The SD, Shakers, Guitar, and Bass staves are in a 4/4 time signature. The Strings staff is in a 4/4 time signature. The music is in a key signature of one flat (B-flat major or D minor). The BD part consists of a steady quarter-note pulse. The Hhths part consists of a steady eighth-note pulse. The Toms part consists of a steady eighth-note pulse. The SD part consists of a steady quarter-note pulse. The Shakers part consists of a steady eighth-note pulse. The Guitar part consists of a steady eighth-note pulse. The Bass part consists of a steady quarter-note pulse. The Strings part consists of a steady quarter-note pulse.



46

BD
Hhths
Toms
SD
Shakers
Saw
Guitar
Bass
Strings

Detailed description: This musical score block covers measures 46, 47, 48, and 49. It features eight staves: BD (Bass Drum), Hhths (Hi-Hats), Toms, SD (Snare Drum), Shakers, Saw, Guitar, and Bass. The BD, Hhths, and Toms staves are in a 2/4 time signature. The SD, Shakers, Guitar, and Bass staves are in a 4/4 time signature. The Saw and Strings staves are in a 4/4 time signature. The music is in a key signature of one flat (B-flat major or D minor). The BD part consists of a steady quarter-note pulse. The Hhths part consists of a steady eighth-note pulse. The Toms part consists of a steady eighth-note pulse. The SD part consists of a steady quarter-note pulse. The Shakers part consists of a steady eighth-note pulse. The Saw part consists of a steady quarter-note pulse. The Guitar part consists of a steady eighth-note pulse. The Bass part consists of a steady quarter-note pulse. The Strings part consists of a steady quarter-note pulse.

50

BD
Hhts
Toms
SD
Shakers
Saw
Guitar
Bass
Strings

Detailed description: This musical score covers measures 50, 51, and 52. The instruments are: BD (Bongos), Hhts (Hi-hats), Toms, SD (Snare Drum), Shakers, Saw (Saw), Guitar, Bass, and Strings. The key signature has one flat (B-flat). The time signature is 4/4. The BD part consists of quarter notes. The Hhts part consists of eighth notes. The Toms part has a pattern of quarter notes. The SD part has a pattern of quarter notes. The Shakers part has a pattern of eighth notes. The Saw part has a melodic line with a long sustain. The Guitar part has a complex rhythmic pattern with many sixteenth notes. The Bass part has a simple rhythmic pattern. The Strings part has a long sustain.



53

BD
Hhts
Toms
SD
Shakers
Saw
Guitar
Bass
Strings

Detailed description: This musical score covers measures 53, 54, and 55. The instruments are: BD (Bongos), Hhts (Hi-hats), Toms, SD (Snare Drum), Shakers, Saw (Saw), Guitar, Bass, and Strings. The key signature has one flat (B-flat). The time signature is 4/4. The BD part consists of quarter notes. The Hhts part consists of eighth notes. The Toms part has a pattern of quarter notes. The SD part has a pattern of quarter notes. The Shakers part has a pattern of eighth notes. The Saw part has a melodic line with a long sustain. The Guitar part has a complex rhythmic pattern with many sixteenth notes. The Bass part has a simple rhythmic pattern. The Strings part has a long sustain.

56

BD

Hhts

Toms

SD

Shakers

Saw

Guitar

Bass

Organ

Marcato

Strings

Detailed description: This page of a musical score, numbered 56, contains ten staves. The top five staves are percussion parts: BD (Bongos) with a steady quarter-note pulse; Hhts (Hi-hats) with a consistent eighth-note pattern; Toms with occasional eighth-note accents; SD (Snare Drum) with a simple quarter-note pattern; and Shakers with a rhythmic eighth-note pattern. The Saw staff is in treble clef with a melodic line. The Guitar staff features a complex, syncopated rhythm with many beamed notes. The Bass staff is in bass clef with a steady eighth-note line. The Organ staff has a treble and bass clef, with a melodic line in the treble. The Marcato staff is in bass clef and mostly contains rests, with a key signature change to B major in the third measure. The Strings staff is in treble clef with a melodic line.

59

BD
Hhts
Toms
SD
Shakers
Saw
Bass
Organ
Marcato

Detailed description: This musical score block covers measures 59 to 61. It features eight staves: BD (Bongos), Hhts (Hi-hats), Toms, SD (Snare Drum), Shakers, Saw (Sawtooth), Bass, Organ, and Marcato. The BD, Hhts, and Toms staves are in 2/4 time. The SD, Shakers, and Saw staves are in 4/4 time. The Bass, Organ, and Marcato staves are in 4/4 time. The key signature is one sharp (F#). The organ part includes a triplet in measure 60. The Marcato part features a long note in measure 60.



62

BD
Hhts
Toms
SD
Shakers
Saw
Bass
Organ
Marcato

Detailed description: This musical score block covers measures 62 to 64. It features the same eight staves as the previous block. The key signature changes to one flat (Bb). The organ part continues with complex chordal textures. The Marcato part features a long note in measure 62.

65

BD

Hhts

Toms

SD

Shakers

Saw

Guitar

Bass

Organ

Marcato

Piano

Detailed description: This is a multi-staff musical score for a band. The score is divided into two measures. The instruments and their parts are:
- **BD (Bass Drum):** Simple quarter notes.
- **Hhts (Hi-Hats):** A steady eighth-note pattern.
- **Toms:** Accented eighth notes on the second and fourth beats.
- **SD (Snare Drum):** Quarter notes on the second and fourth beats.
- **Shakers:** A rhythmic pattern of eighth and quarter notes.
- **Saw:** A melodic line with triplets and various accidentals.
- **Guitar:** Chordal accompaniment with some melodic fragments.
- **Bass:** A simple bass line with quarter and eighth notes.
- **Organ:** A melodic line in the right hand, with a low octave in the left hand.
- **Marcato:** A single chord at the beginning of the first measure.
- **Piano:** A complex accompaniment with many chords and moving lines.

67

BD
Hhts
Toms
SD
Shakers
Saw
Guitar
Bass
Strings
Piano

Detailed description: This musical score block covers measures 67 and 68. It features ten staves: BD (Bass Drum), Hhts (Hi-Hats), Toms, SD (Snare Drum), Shakers, Saw (Saw), Guitar, Bass, Strings, and Piano. The BD and Hhts parts consist of a steady 4/4 beat. The Toms part has a pattern of rests followed by eighth notes. The SD part has a pattern of eighth notes followed by quarter notes. The Shakers part has a rhythmic pattern of eighth notes. The Saw part is silent. The Guitar part has a complex rhythmic pattern with chords and single notes. The Bass part has a simple eighth-note pattern. The Strings part has a long, sustained note. The Piano part has a complex rhythmic pattern with chords and single notes, including a triplet in measure 68.



69

BD
Hhts
Toms
SD
Shakers
Guitar
Bass
Strings
Piano

Detailed description: This musical score block covers measures 69 and 70. It features nine staves: BD, Hhts, Toms, SD, Shakers, Guitar, Bass, Strings, and Piano. The BD and Hhts parts continue the steady 4/4 beat. The Toms part has a pattern of rests followed by eighth notes. The SD part has a pattern of eighth notes followed by quarter notes. The Shakers part has a rhythmic pattern of eighth notes. The Guitar part has a complex rhythmic pattern with chords and single notes. The Bass part has a simple eighth-note pattern. The Strings part has a long, sustained note. The Piano part has a complex rhythmic pattern with chords and single notes, including a triplet in measure 70.

70

BD
Hhts
Toms
SD
Shakers
Guitar
Bass
Strings
Piano

Detailed description: This musical score block covers measures 70 and 71. It features ten staves: BD (Bass Drum), Hhts (Hi-Hats), Toms, SD (Snare Drum), Shakers, Guitar, Bass, Strings, and Piano. The BD and Hhts parts are simple, with the Hhts playing a consistent rhythmic pattern. The Toms and SD parts have sparse notes. The Shakers part has a melodic line with a slur. The Guitar and Bass parts are more complex, with the Guitar using a mix of chords and single notes, and the Bass providing a steady accompaniment. The Strings part features a melodic line with a slur and a triplet. The Piano part has a complex accompaniment with many notes and a triplet.



71

BD
Hhts
Toms
SD
Shakers
Guitar
Bass
Strings
Piano

Detailed description: This musical score block covers measures 71 and 72. It features the same ten staves as the previous block. The BD and Hhts parts continue their simple patterns. The Toms and SD parts have sparse notes. The Shakers part has a melodic line with a slur. The Guitar and Bass parts are more complex, with the Guitar using a mix of chords and single notes, and the Bass providing a steady accompaniment. The Strings part features a melodic line with a slur. The Piano part has a complex accompaniment with many notes and a triplet.

73

BD
Hhts
Toms
SD
Shakers
Guitar
Bass
Strings
Piano

Detailed description: This musical score covers measures 73, 74, and 75. The percussion parts (BD, Hhts, Toms, SD, Shakers) feature a consistent rhythmic pattern. The guitar part is highly active with complex rhythmic patterns and accidentals. The bass line provides a steady accompaniment. The strings play a melodic line with triplets and a long sustain. The piano part has a complex, multi-layered texture with many notes and accidentals.



76

BD
Hhts
Toms
SD
Shakers
Guitar
Bass
Strings

Detailed description: This musical score covers measures 76, 77, 78, and 79. The percussion parts continue with the established patterns. The guitar part remains complex and rhythmic. The bass line continues its accompaniment. The strings play a melodic line with long sustains and some dynamics markings. The piano part is not visible in this section.

80

BD
Hhths
Toms
SD
Shakers
Saw
Guitar
Bass
Strings

Detailed description: This musical score covers measures 80, 81, and 82. The percussion parts (BD, Hhths, Toms, SD) feature a consistent rhythmic pattern of quarter notes. The Shakers part has a more complex, syncopated rhythm. The Saw part is mostly silent, with a melodic line appearing in measure 82. The Guitar part plays a complex, syncopated rhythm with many sixteenth notes. The Bass part has a steady eighth-note pattern. The Strings part consists of long, sustained notes.



83

BD
Hhths
Toms
SD
Shakers
Saw
Guitar
Bass
Strings

Detailed description: This musical score covers measures 83, 84, 85, and 86. The percussion parts continue with their established patterns. The Shakers part has a more complex, syncopated rhythm. The Saw part has a melodic line with some chromaticism. The Guitar part plays a complex, syncopated rhythm with many sixteenth notes. The Bass part has a steady eighth-note pattern. The Strings part consists of long, sustained notes.

87

BD
Hhths
Toms
SD
Shakers
Saw
Guitar
Bass
Strings

Detailed description: This musical score block covers measures 87, 88, and 89. It features eight staves: BD (Bongos), Hhths (Hi-hats), Toms, SD (Snare Drum), Shakers, Saw (Sawtooth), Guitar, and Strings. The BD and Hhths parts consist of steady eighth-note patterns. The Toms part has a sparse pattern with notes on the second and fourth beats of each measure. The SD part plays a simple quarter-note pattern. The Shakers part has a rhythmic pattern of eighth notes and quarter notes. The Saw part plays a melodic line with a sawtooth-like contour. The Guitar part features a complex, syncopated rhythm with many beamed eighth notes. The Bass part plays a steady eighth-note line. The Strings part has a long, sustained note with a slight vibrato.



90

BD
Hhths
Toms
SD
Shakers
Saw
Guitar
Bass
Strings

Detailed description: This musical score block covers measures 90, 91, 92, and 93. It features the same eight staves as the previous block. The BD and Hhths parts continue with their steady eighth-note patterns. The Toms part has a sparse pattern with notes on the second and fourth beats of each measure. The SD part plays a simple quarter-note pattern. The Shakers part has a rhythmic pattern of eighth notes and quarter notes. The Saw part plays a melodic line with a sawtooth-like contour. The Guitar part features a complex, syncopated rhythm with many beamed eighth notes. The Bass part plays a steady eighth-note line. The Strings part has a long, sustained note with a slight vibrato.

94

BD
Hhts
Toms
SD
Shakers
Saw
Guitar
Bass
Strings

Detailed description: This musical score covers measures 94 and 95. It features eight staves: BD (Bass Drum), Hhts (Hi-Hats), Toms, SD (Snare Drum), Shakers, Saw (Saw), Guitar, Bass, and Strings. The BD and Hhts parts are simple, with the BD playing a steady quarter-note pulse and the Hhts playing a consistent eighth-note pattern. The Toms part has a few notes in measures 94 and 95. The SD part plays a simple quarter-note pattern. The Shakers part has a melodic line with a slur over the first two notes of each measure. The Saw part has a melodic line with a slur over the first two notes of each measure. The Guitar part has a complex, rhythmic pattern with many slurs and ties. The Bass part has a simple, rhythmic pattern. The Strings part has a long, sustained note with a slur over it.



96

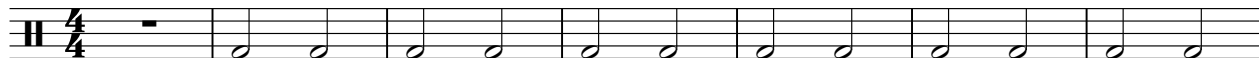
BD
Hhts
Toms
SD
Shakers
Saw
Guitar
Bass
Strings

Detailed description: This musical score covers measures 96 and 97. It features the same eight staves as the previous section. The BD and Hhts parts continue with their respective patterns. The Toms part has a few notes in measures 96 and 97. The SD part plays a simple quarter-note pattern. The Shakers part has a melodic line with a slur over the first two notes of each measure. The Saw part has a melodic line with a slur over the first two notes of each measure. The Guitar part has a complex, rhythmic pattern with many slurs and ties. The Bass part has a simple, rhythmic pattern. The Strings part has a long, sustained note with a slur over it.

BD

Tony Braxton - Your Makin` Me High

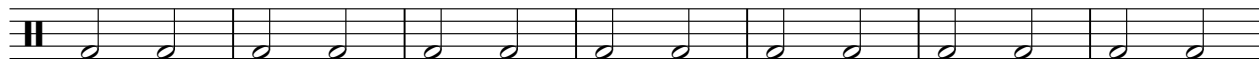
♩ = 92,499947



8



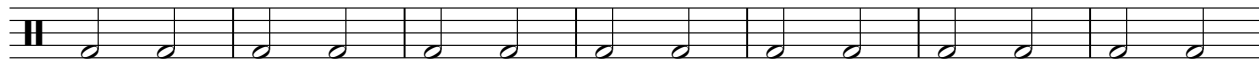
15



22



29



36



43



50



57



64

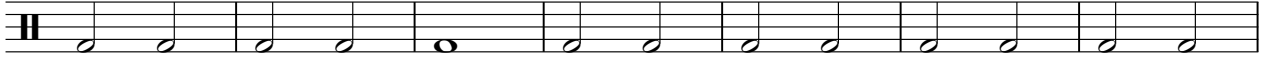


V.S.

2

BD

71



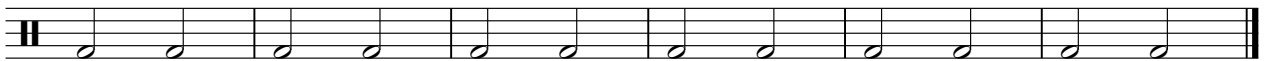
78



85



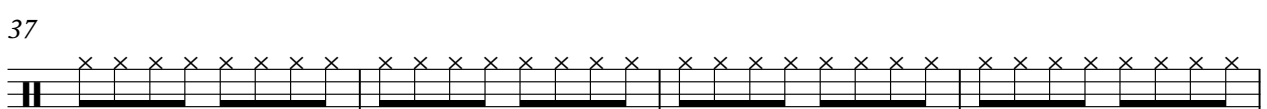
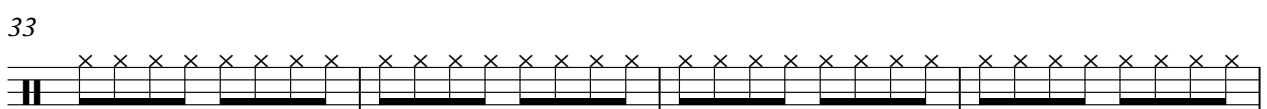
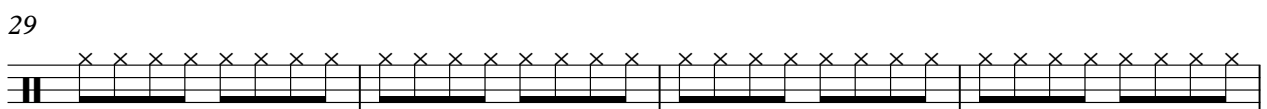
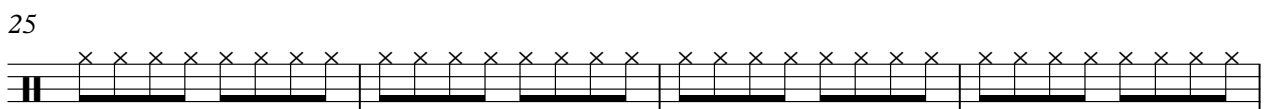
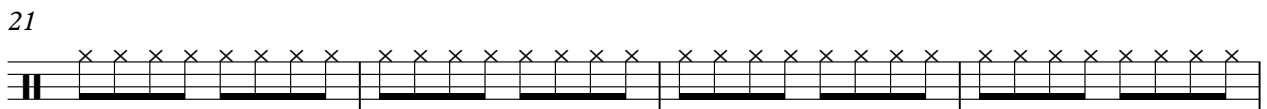
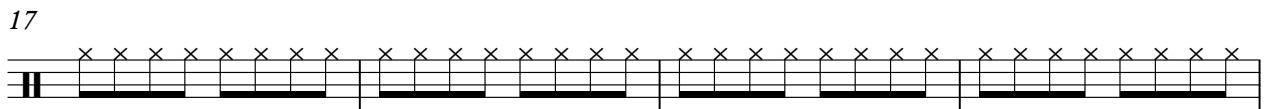
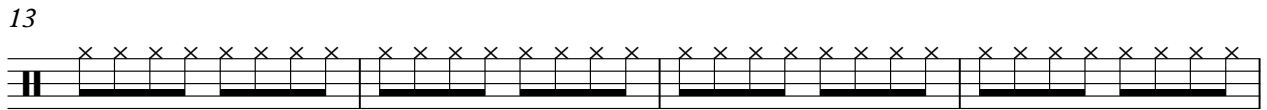
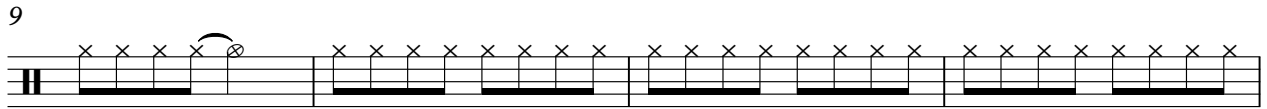
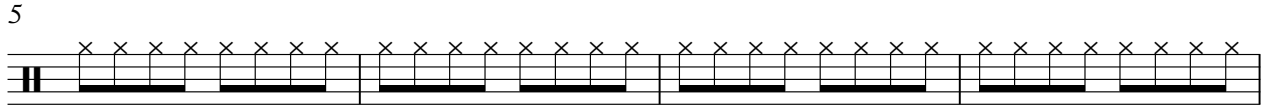
92



Hhths

Tony Braxton - Your Makin` Me High

♩ = 92,499947



V.S.

2

Hhts

41



45



49



53



57



61



65



69



73



77



81



85



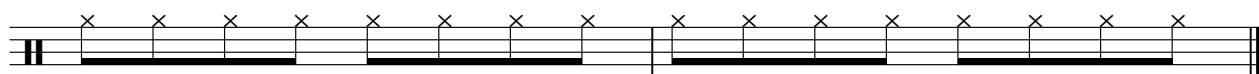
89



93



96



53



58



63



68



74



79



85



90



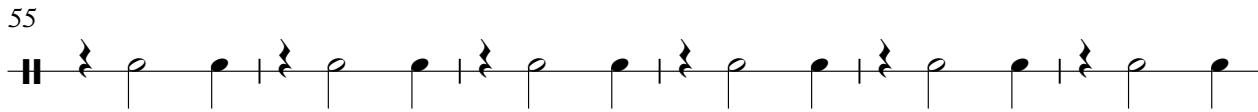
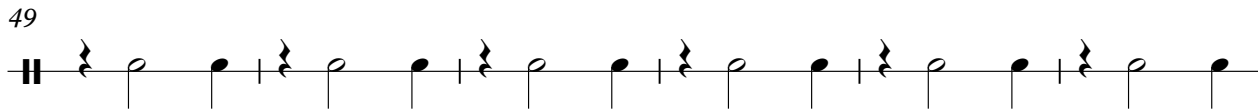
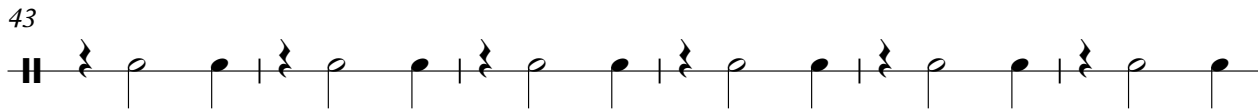
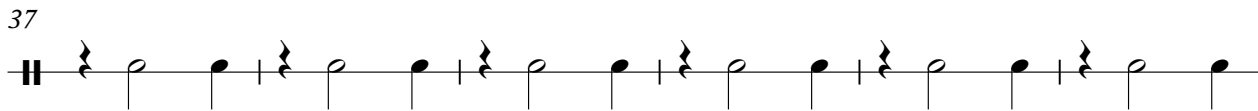
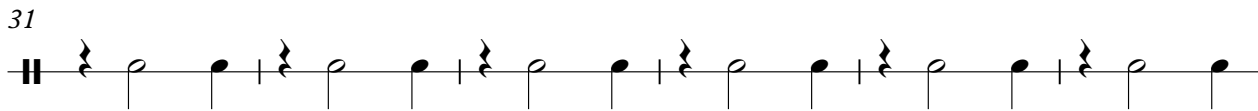
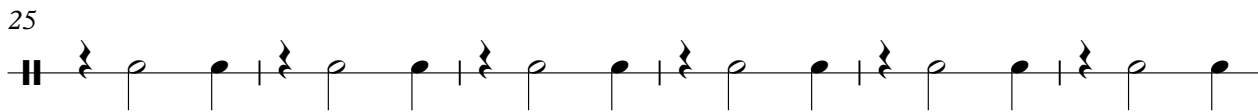
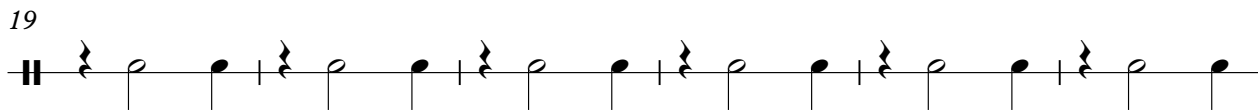
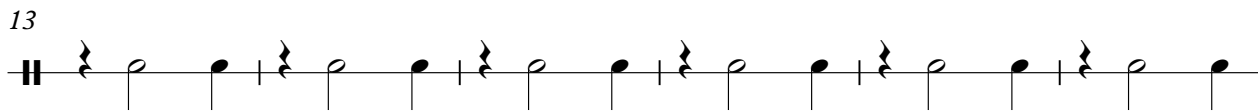
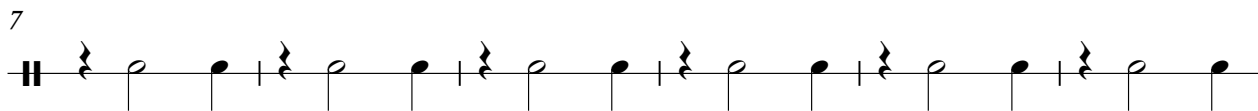
94



SD

Tony Braxton - Your Makin` Me High

♩ = 92,499947

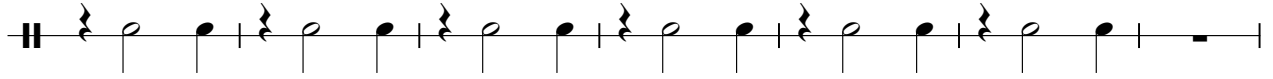


V.S.

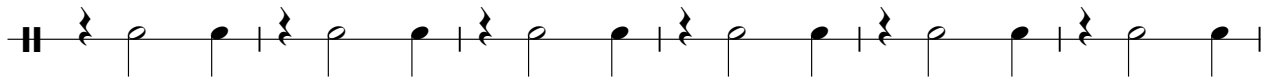
61



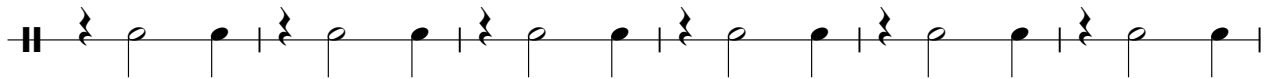
67



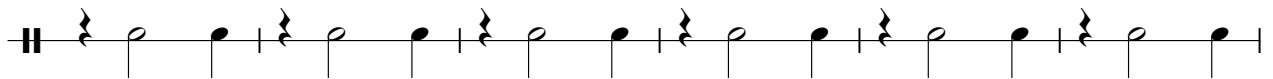
74



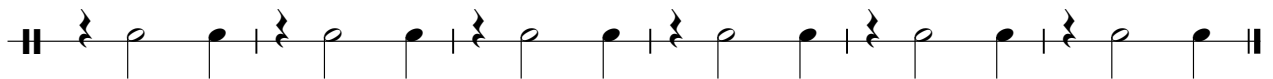
80



86



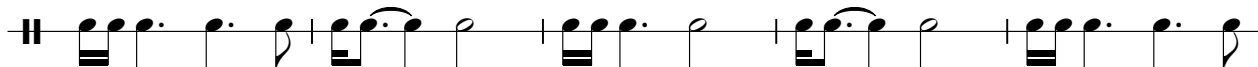
92



♩ = 92,499947



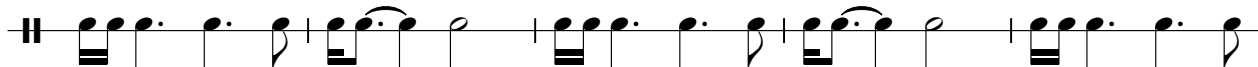
7



12



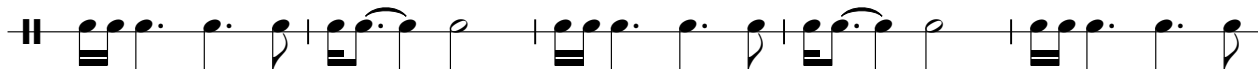
17



22



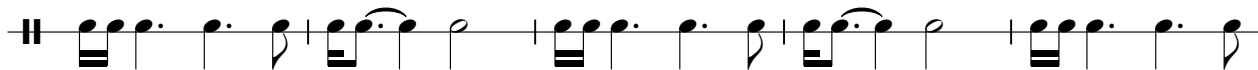
27



32



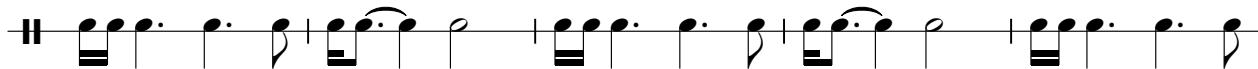
37



42



47

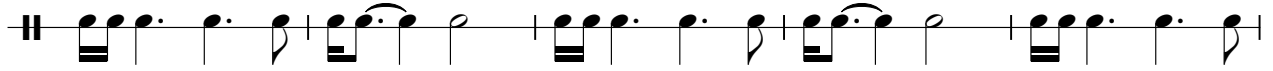


V.S.

52



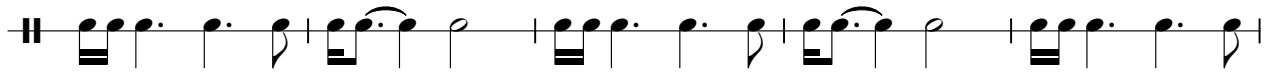
57



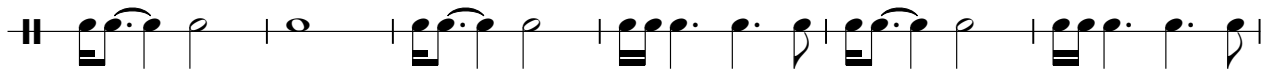
62



67



72



78



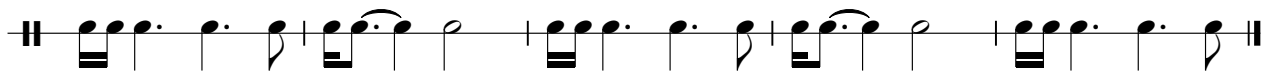
83



88



93



Tony Braxton - Your Makin` Me High

Saw

♩ = 92,499947

6

10

15

29

34

15

53

59

64

66

14

81



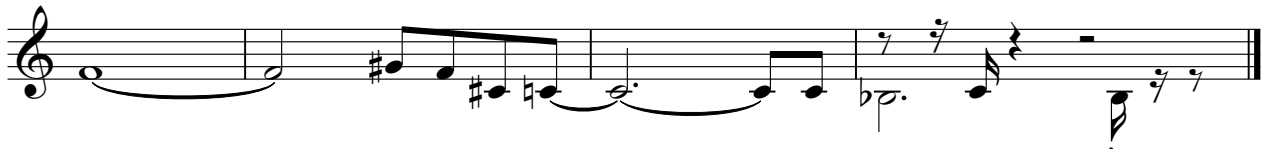
86



91



94



Tony Braxton - Your Makin` Me High

Guitar

♩ = 92,499947

4

6

8

11

14

17

20

22

25

V.S.

27

29

31

34

37

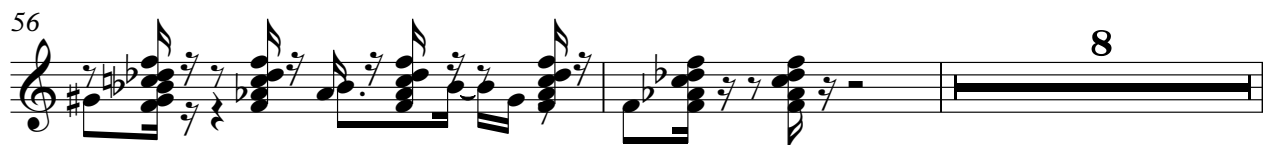
40

43

45

48

50



82

84

86

88

91

93

95

Tony Braxton - Your Makin` Me High

Bass

♩ = 92,499947



5



9



13



17



21



25



29



33



37



V.S.

41



45



49



53



57



60



63



68



72



76



80



84



88



92



95



Organ

Tony Braxton - Your Makin` Me High

♩ = 92,499947

57

57

This system shows measures 57 and 58. Measure 57 is a whole rest in both staves. Measure 58 features a complex melodic line in the treble clef with many accidentals and a triplet of eighth notes, and a bass line with a few notes and rests.

59

59

This system shows measures 59 and 60. Measure 59 has a busy treble staff with many notes and accidentals, and a bass staff with rests. Measure 60 continues the treble staff with a triplet and has a more active bass line.

61

61

This system shows measures 61, 62, and 63. Measure 61 has a treble staff with chords and a bass staff with notes. Measure 62 has a treble staff with chords and a bass staff with notes. Measure 63 has a treble staff with notes and a bass staff with notes.

64

32

32

This system shows measures 64, 65, and 66. Measure 64 has a treble staff with notes and a bass staff with notes. Measure 65 has a treble staff with notes and a bass staff with notes. Measure 66 is a double bar line with the number 32 written above and below the staves.

Marcato

Tony Braxton - Your Makin` Me High

♩ = 92,499947

57

57 58 59 60 61

62

62 63 64

65

32

65

Strings

Tony Braxton - Your Makin` Me High

♩ = 92,499947

41

48

56

10

72

81

89

94

Tony Braxton - Your Makin` Me High

Piano

♩ = 92,499947

65

67

68

69

70

71

73

74

23