

Traditional Publ 1853 - People Fid

♩ = 78,000076

Mélie

Batterie

Banjo

Guitare

Basse

Voix 1

Voix 2

Violon

♩ = 78,000076



6

Mélie

Guitare



11

Mélie

Guitare



16

Mélie

Guitare

21 $\text{♩} = 92,000130$

Mélie

Batterie

Banjo

Guitare

Basse

Violon



25

Mélie

Batterie

Banjo

Guitare

Basse

Voix 1

Voix 2

Violon

29

Mélo die

Batterie

Banjo

Guitare

Basse

Voix 1

Voix 2

Violon



33

Mélo die

Batterie

Banjo

Guitare

Basse

Voix 1

Voix 2

Violon

37

Mélo die

Batterie

Banjo

Guitare

Basse

Voix 1

Voix 2

Violon



41

Mélo die

Batterie

Banjo

Guitare

Basse

Voix 1

Voix 2

Violon

45

Mélo die

Batterie

Banjo

Guitare

Basse

Voix 1

Voix 2

Violon



48

Mélo die

Batterie

Banjo

Guitare

Basse

Voix 1

Voix 2

Violon

52

Mélo die

Batterie

Banjo

Guitare

Basse

Voix 1

Voix 2

Violon



56

Mélo die

Batterie

Banjo

Guitare

Basse

Voix 1

Voix 2

Violon

60

Mélodie

Batterie

Banjo

Guitare

Basse

Voix 1

Voix 2

Violon

Detailed description: This system contains measures 60 through 63. The Melodie part features a simple melody with a triplet in measure 63. The Batterie part has a steady eighth-note rhythm. The Banjo part includes a complex sequence of chords and single notes with fret numbers (e.g., 7, 5, 4, 2, 5, 0, 3, 0, 3, 0, 2, 2, 3). The Guitare part has a similar chordal structure. The Basse part provides a bass line with eighth notes. The Voix 1 part has a simple harmonic accompaniment. The Voix 2 part has a more active melody. The Violon part features a melodic line with slurs and accents.



64

Mélodie

Batterie

Banjo

Guitare

Basse

Voix 1

Voix 2

Violon

Detailed description: This system contains measures 64 through 67. The Melodie part has a simple melody. The Batterie part continues with a steady eighth-note rhythm. The Banjo part features a complex sequence of chords and single notes with fret numbers (e.g., 5, 3, 3, 3, 3, 3, 0, 0, 5, 5, 0, 5, 0, 5, 0, 4, 4, 4, 4, 0, 0). The Guitare part has a similar chordal structure. The Basse part provides a bass line with eighth notes. The Voix 1 part has a simple harmonic accompaniment. The Voix 2 part has a more active melody. The Violon part features a melodic line with slurs and accents.

67

Mélo die

Batterie

Banjo

Guitare

Basse

Voix 1

Voix 2

Violon



70

Mélo die

Batterie

Banjo

Guitare

Basse

Voix 1

Voix 2

Violon

74

Mélo die

Batterie

Banjo

Guitare

Basse

Voix 1

Voix 2

Violon



78

Mélo die

Batterie

Banjo

Guitare

Basse

Voix 1

Voix 2

Violon

Musical score for page 10, featuring the following instruments and parts:

- Mélodie:** Melody line in treble clef, starting at measure 82. Includes a tempo marking: $\text{♩} = 80, 09 029 069 08100 \pm 55, 058 069 0433, 000023$.
- Batterie:** Drum part in a simplified notation, featuring a triplet of eighth notes.
- Banjo:** Banjo part in treble clef with a 5/8 time signature. Includes a tempo marking: $\text{♩} = 80, 09 029 069 08100 \pm 55, 058 069 0433, 000023$. Fingerings are indicated by numbers 1-5.
- Guitare:** Guitar part in treble clef, featuring a complex rhythmic pattern with a $\%+$ marking.
- Basse:** Bass line in bass clef, providing a steady accompaniment.
- Voix 1:** First vocal part in treble clef, with a $\%+$ marking.
- Voix 2:** Second vocal part in treble clef, with a $\%+$ marking.
- Violon:** Violin part in treble clef, with a tempo marking: $\text{♩} = 80, 09 029 069 08100 \pm 55, 058 069 0433, 000023$.

Mélodie

Traditional Publ 1853 - Peuple Fid

♩ = 78,000076

3

9

15

21

27

33

39

45

51

57

V.S.

63



69



75



80



♩ = 80, 70, 60, 50, 40, 30, 20, 10, 000023

Batterie

Traditional Publ 1853 - People Fid

♩ = 78,000076 ♩ = 92,000130

22

26

30

34

38

42

46

50

54

58

V.S.

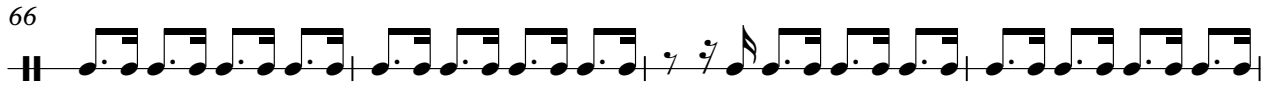
2

Batterie

62



66



70



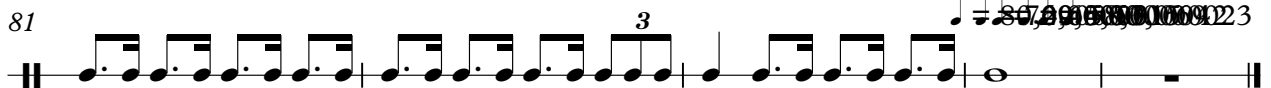
74



78



81



Traditional Publ 1853 - People Fid

Banjo

♩ = 78,000076 ♩ = 92,000130

22

25

29

32

35

39

43

46

49

52

V.S.

Detailed description: This is a sheet music page for a banjo piece titled 'People Fid'. The music is written on a five-line staff in 4/4 time. It begins with a tempo marking of ♩ = 78,000076 and a key signature of one flat (Bb). The first measure is a whole rest, followed by a double bar line and the number '22'. The piece then continues with a series of measures, each containing a mix of eighth and sixteenth notes, often beamed together. Fingering numbers (1-4) are placed above or below notes to indicate fingerings. There are several triplet markings (indicated by a '3' in a bracket) and some slurs. The piece concludes with a double bar line and the number '52', followed by the initials 'V.S.'.

Traditional Publ 1853 - People Fid

Guitare

♩ = 78,000076

4

6

9

13

16

19

♩ = 92,000130

22

25

28

V.S.

31

34

37

40

43

46

49

52

55

58

61

64

67

70

73

76

79

♩ = 80, 00000000000015 ♩ = 65, 000000000023

82

Traditional Publ 1853 - People Fid

Basse

♩ = 78,000076

♩ = 92,000130

22



27



33



38



43



48



53



58



63



68



V.S.

2

Basse

73



78



82

80 7 2 0 0 0 0 0 0 0 0 0 0 2 3



Traditional Publ 1853 - People Fid

Voix 1

$\% = 78,000076$ $\% = 92,000130$
22 **2**

29

35

40

47

53

59

65

71

77

V.S.

81

81 82 83 84 85 86 87 88 89 90 91 92 93 94 95 96 97 98 99 100 101 102 103 104 105 106 107 108 109 110 111 112 113 114 115 116 117 118 119 120 121 122 123

%+

Traditional Publ 1853 - People Fid

Voix 2

$\% = 78,000076$ $\% = 92,000130$
22 **2**

29

36

41

48

55

60

67

73

78

V.S.

2

Voix 2

82

%+ = 50,00000,0000423,000023

Musical notation for Voix 2, measure 82. The staff is in treble clef with a key signature of one sharp (F#). The notation includes a series of quarter notes, a half note with a slur, and a whole note. There are also some rests and a final bar line.

Violon

Traditional Publ 1853 - People Fid

♩ = 78,000076 ♩ = 92,000130

21

25

29

32

35

38

41

45

47

50

V.S.

Violon

53

57

60

63

66

68

72

75

79

82

86 87 88 89 90 91 92 93