

Travis Tritt - Help Me Hold On

♩ = 75,999969
Back Vocal

DO AND TIGHTEN UP THE BELT. DON'T LET US GO. WE'RE NOT FORGOTTEN. WE'RE NOT FORGOTTEN.

Harmonica

Percussion

Jazz Guitar

Jazz Guitar

Jazz Guitar

Jazz Guitar

Electric Guitar

Electric Guitar

Kora

Kora

Fretless Electric Bass

♩ = 75,999969

Viola

Solo

(C) 1994 Tune 1000 Corporation ;EMI Music/Sony/ATV Music Pub. Int'l Rights Secured.
(C) 1994 Tune 1000 Corporation ;EMI Music/Sony/ATV Music Pub. Int'l Rights Secured.

2

3

Perc.

J. Gtr.

J. Gtr.

J. Gtr.

E. Bass

Vla.

Solo

5

Harm.

Perc.

J. Gtr.

J. Gtr.

J. Gtr.

E. Gtr.

Kora


E. Bass


Vla.


Solo


Ba by lose that suit case you been pack


8


Harm. 

Perc. 

J. Gtr. 

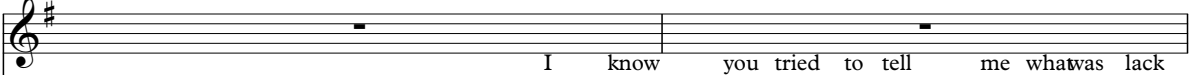
J. Gtr. 

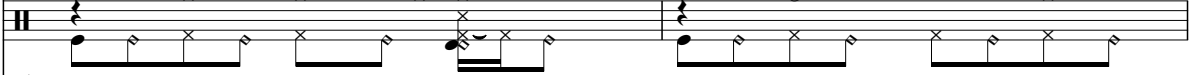
Kora 


E. Bass 


in'. Just sit down and talk to me a while.


10

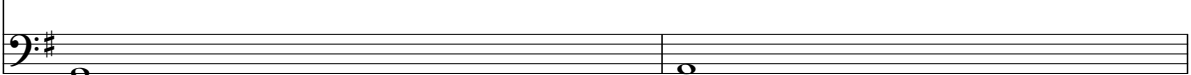
Harm. 

Perc. 

J. Gtr. 

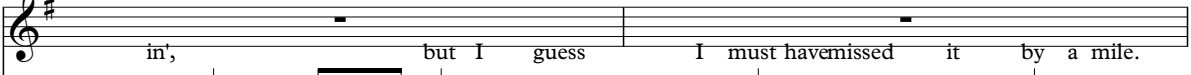
J. Gtr. 

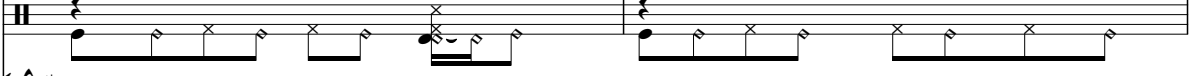
Kora 


E. Bass 


I know you tried to tell me what was lack


12

Harm. 

Perc. 

J. Gtr. 

J. Gtr. 

Kora 

E. Bass 

in', but I guess I must have missed it by a mile.

14

Harm. Well, this time, girl, I swear to you I'll lis

Perc.

J. Gtr.

J. Gtr.

Kora

E. Bass

Vla. 8

Solo



16

Harm. ten. Help me un der stand where I went wrong.

Perc.

J. Gtr.

J. Gtr.

E. Gtr.

Kora

E. Bass

Vla. 8

Solo

18

Harm. It's hard to find my self in this po si

Perc.

J. Gtr.

J. Gtr.

E. Gtr.

Kora

E. Bass

Vla.

Solo

20

Harm. tion, scared that'll go cra zyonce you'gone.

Perc.

J. Gtr.

J. Gtr.

E. Gtr.

Kora

E. Bass

Vla.

Solo

Harm. 

Help me hold on tow hat we had.

Perc. 

J. Gtr. 

J. Gtr. 

E. Gtr. 

Kora 

Kora 

E. Bass 

Vla. 

Solo 

24

Harm. *Once our love was strong; it can be a gain. You said it takes two*

Perc.

J. Gtr.

J. Gtr.

J. Gtr.

E. Gtr.

Kora

Kora

E. Bass



27

Harm. *to make love last. You're right all a long, schelpm hold on.*

Perc.

J. Gtr.

J. Gtr.

J. Gtr.

Kora

Kora

E. Bass

30

Harm.

Perc.

J. Gtr.

J. Gtr.

J. Gtr.

E. Gtr.

Kora

Kora

E. Bass

Vla.

Solo

32

Harm. Perc. J. Gtr. J. Gtr. J. Gtr. E. Gtr. E. Gtr. E. Bass

Vla. Solo

34

Harm. Perc. J. Gtr. J. Gtr. J. Gtr. E. Gtr. Kora E. Bass

have I got to do tomake it bet ter? What

36

Harm.

Perc.

J. Gtr.

J. Gtr.

J. Gtr.

Kora

Kora

E. Bass

have I got to do to make you see that,



38

Harm.

Perc.

J. Gtr.

J. Gtr.

J. Gtr.

J. Gtr.

Kora

E. Bass

venough I promised you for ever, I nev

40

Harm. erknew how hard that wouldbe? I re

Perc.

J. Gtr.

J. Gtr.

J. Gtr.

Kora

Kora

E. Bass



42

Harm. al ize I took your love fogrant ed, butI've learned

Perc.

J. Gtr.

J. Gtr.

Kora

Kora

E. Bass

Vla.

44

Harm. *that love worth hav in' don't come free.*

Perc.

J. Gtr.

J. Gtr.

Kora

Kora

E. Bass

Vla.



46

Harm. *pay an y price it takes to keep you sat*

Perc.

J. Gtr.

J. Gtr.

Kora

E. Bass

Vla.

48

Harm. *is fied and stay in' here withme.*

Perc.

J. Gtr.

J. Gtr.

Kora

Kora

E. Bass

Vla.



50

Harm. *Help me hold on to what we had.*

Perc.

J. Gtr.

J. Gtr.

E. Gtr.

Kora

Kora

E. Bass

Vla.

Harm.
Perc.
J. Gtr.
J. Gtr.
J. Gtr.
E. Gtr.
Kora
Kora
E. Bass
Vla.

55

Harm. *to make love last. You're right all a long, schelp m hold on.*

Perc.

J. Gtr.

J. Gtr.

J. Gtr.

Kora

Kora

E. Bass

Vla.

58

Perc.

J. Gtr.

E. Gtr.

Kora

Kora

E. Bass

Vla.

Solo

60

Harm.

Perc.

J. Gtr.

E. Gtr.

Kora

Kora

E. Bass

Vla.

Solo

Help me hold on

62

Harm. 

Perc. 

J. Gtr. 

J. Gtr. 

J. Gtr. 

E. Gtr. 

Kora 

Kora 

E. Bass 

Vla. 

65

Harm. 

Perc. 

J. Gtr. 

J. Gtr. 

J. Gtr. 

E. Gtr. 

Kora 

Kora 

E. Bass 

Vla. 

68

Harm.

søhlp meholðn. Youeright all ðong,

Perc.

J. Gtr.

J. Gtr.

J. Gtr.

J. Gtr.

E. Gtr.

Kora

Kora

E. Bass

Vla.

Solo

71

71

Harm.

Perc.

J. Gtr.

J. Gtr.

J. Gtr.

Kora

E. Bass

Vla.

Solo

schelpmhold on.

Detailed description: This block contains the musical score for measures 71 through 73. It features eight staves: Harm. (Harp), Perc. (Percussion), three J. Gtr. (Jazz Guitar) staves, Kora (Kora), E. Bass (Electric Bass), Vla. (Viola), and Solo (Soloist). The key signature has one sharp (F#). The Solo part has a melodic line with some grace notes. The Kora part has a rhythmic pattern. The J. Gtr. parts have various textures, including chords and arpeggios. The Perc. part has a consistent rhythmic accompaniment. The Harm. part has a few notes. The Vla. part has a simple harmonic accompaniment. The E. Bass part has a simple bass line. The Solo part has a melodic line with some grace notes. The text 'schelpmhold on.' is written above the Solo staff in measure 72.



74

74

Harm.

Perc.

J. Gtr.

J. Gtr.

J. Gtr.

E. Bass

Vla.

Solo

Detailed description: This block contains the musical score for measures 74 through 76. It features the same eight staves as the previous block. The key signature remains one sharp (F#). The Solo part continues its melodic line. The Kora part continues its rhythmic pattern. The J. Gtr. parts continue with various textures. The Perc. part continues its rhythmic accompaniment. The Harm. part continues with a few notes. The Vla. part continues with a simple harmonic accompaniment. The E. Bass part continues with a simple bass line.

76

♩ = 72,000031

♩ = 65,999992

♩ = 75,999969

Harm.

Musical notation for the Harmonica part, starting with a treble clef and a key signature of one sharp (F#). The staff contains a sequence of notes and rests, including a dotted quarter note, a quarter rest, an eighth note, and a quarter note.

Perc.

Musical notation for the Percussion part, starting with a double bar line. The staff contains rhythmic notation with 'x' marks indicating hits, including a quarter note, an eighth note, and a quarter note.

J. Gtr.

Musical notation for the first J. Gtr. part, starting with a treble clef and a key signature of one sharp (F#). The staff contains a sequence of chords and notes, including a dotted quarter note, a quarter note, and a quarter note.

J. Gtr.

Musical notation for the second J. Gtr. part, starting with a treble clef and a key signature of one sharp (F#). The staff contains a sequence of notes and rests, including a quarter note, an eighth note, and a quarter note.

J. Gtr.

Musical notation for the third J. Gtr. part, starting with a treble clef and a key signature of one sharp (F#). The staff contains a sequence of notes and rests, including a quarter note, an eighth note, and a quarter note.

E. Bass

Musical notation for the E. Bass part, starting with a bass clef and a key signature of one sharp (F#). The staff contains a sequence of notes and rests, including a quarter note, a half note, and a quarter note.

♩ = 72,000031

♩ = 65,999992

♩ = 75,999969

Vla.

Musical notation for the Vla. part, starting with a bass clef and a key signature of one sharp (F#). The staff contains a sequence of chords and notes, including a dotted quarter note, a quarter note, and a quarter note.

Solo

Musical notation for the Solo part, starting with a treble clef and a key signature of one sharp (F#). The staff contains a sequence of notes and rests, including a quarter note, an eighth note, and a quarter note.

Travis Tritt - Help Me Hold On

Harmonica

♩ = 75,999969
Back Vocal

5

NOT FIGHTING WITH THE WORLD FOR BENEFIT. Ba dya dya dya in'. Just do what you know

11

you're doin' in', guess missin' the. Wethis in' ye gollis ten. Help me hold on.

18

It's hard to find a position, scared to let go. Help me hold on what had. On how long;

25

2

it can gain. You take so much to last. You're tall long, help me hold on.

33

What are you making better? What are you making see that from his side

39

er, he's knowin' the. I're a little long, I'm a little long, I'm a little long

45

free. All you can do is keep you sat in a chair. Help me hold on

51

4

what had. On how long; it can gain. You take so much to last. You're tall long, help me hold on.

61

Help me hold on what had. On how long; it can gain. You take so

66

2

much to last. You're tall long; help me hold on. You're tall long,
(C) 1994 Tune 1000 Corporation ;EMI Music/Sony/ATV Music Pub. Int'l Rights Secured.
(C) 1994 Tune 1000 Corporation ;EMI Music/Sony/ATV Music Pub. Int'l Rights Secured.

2

Harmonica

71



staccato hold on.

75

♩ = 72,000031 ♩ = 65,999992 ♩ = 75,999969



Travis Tritt - Help Me Hold On

Percussion

♩ = 75,999969
2

6
10
13
16
18
20
22
25
28

(C) 1994 Tune 1000 Corporation ;EMI Music/Sony/ATV Music Pub. Int'l Rights Secured.
(C) 1994 Tune 1000 Corporation ;EMI Music/Sony/ATV Music Pub. Int'l Rights Secured.

V.S.

Musical score for Percussion, measures 31-49. The score is written on a grand staff with two staves per system. The top staff uses a treble clef and the bottom staff uses a bass clef. The music consists of rhythmic patterns with various note values (quarter, eighth, and sixteenth notes) and rests. The notation includes stems, beams, and various articulation marks such as accents and slurs. The measures are numbered 31, 33, 35, 37, 39, 41, 43, 45, 47, and 49. The score shows a complex rhythmic structure with frequent rests and dynamic markings.

Percussion

51

Musical notation for measure 51, featuring a drum staff with a series of 'x' marks and a bass staff with a rhythmic pattern of eighth notes.

54

Musical notation for measure 54, featuring a drum staff with a series of 'x' marks and a bass staff with a rhythmic pattern of eighth notes.

57

Musical notation for measure 57, featuring a drum staff with a series of 'x' marks and a bass staff with a rhythmic pattern of eighth notes.

60

Musical notation for measure 60, featuring a drum staff with a series of 'x' marks and a bass staff with a rhythmic pattern of eighth notes.

62

Musical notation for measure 62, featuring a drum staff with a series of 'x' marks and a bass staff with a rhythmic pattern of eighth notes.

65

Musical notation for measure 65, featuring a drum staff with a series of 'x' marks and a bass staff with a rhythmic pattern of eighth notes.

68

Musical notation for measure 68, featuring a drum staff with a series of 'x' marks and a bass staff with a rhythmic pattern of eighth notes. A triplet of eighth notes is marked with a '3' above it.

71

Musical notation for measure 71, featuring a drum staff with a series of 'x' marks and a bass staff with a rhythmic pattern of eighth notes.

74

Musical notation for measure 74, featuring a drum staff with a series of 'x' marks and a bass staff with a rhythmic pattern of eighth notes. A tempo marking is present: $\text{♩} = 72,000031 \quad \text{♩} = 65,959992969$.

Travis Tritt - Help Me Hold On

Jazz Guitar

♩ = 75,999969

17

24

31

38

11

54

5

65

69

7

♩ = 72,000031

♩ = 65,999989

2

(C) 1994 Tune 1000 Corporation ;EMI Music/Sony/ATV Music Pub. Int'l Rights Secured.
(C) 1994 Tune 1000 Corporation ;EMI Music/Sony/ATV Music Pub. Int'l Rights Secured.

Travis Tritt - Help Me Hold On
Jazz Guitar

♩ = 75,999969

38 30

71

♩ = 72,000031 ♩ = 75,999969

2

(C) 1994 Tune 1000 Corporation ;EMI Music/Sony/ATV Music Pub. Int'l Rights Secured.
(C) 1994 Tune 1000 Corporation ;EMI Music/Sony/ATV Music Pub. Int'l Rights Secured.

Travis Tritt - Help Me Hold On

Jazz Guitar

♩ = 75,999969

4

7

11

15

18

20

24

28

31

(C) 1994 Tune 1000 Corporation ;EMI Music/Sony/ATV Music Pub. Int'l Rights Secured.
(C) 1994 Tune 1000 Corporation ;EMI Music/Sony/ATV Music Pub. Int'l Rights Secured.

V.S.

34

39

44

49

54

58

4

65

69

73

75

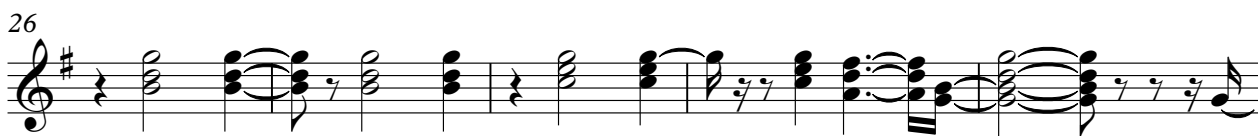
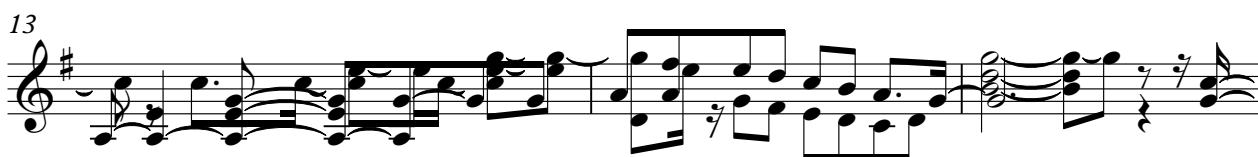
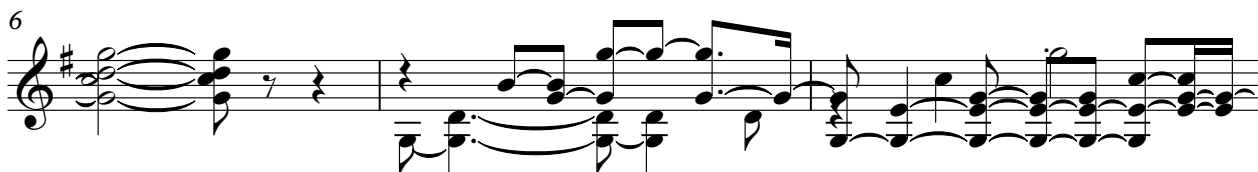
♩ = 72,000031 ♩ = 65,999992 ♩ = 75,999969

2

Travis Tritt - Help Me Hold On

Jazz Guitar

♩ = 75,999969



(C) 1994 Tune 1000 Corporation ;EMI Music/Sony/ATV Music Pub. Int'l Rights Secured.
(C) 1994 Tune 1000 Corporation ;EMI Music/Sony/ATV Music Pub. Int'l Rights Secured.

V.S.

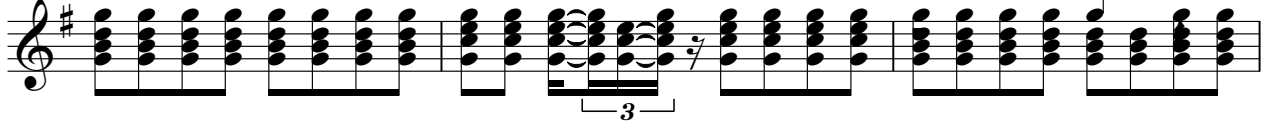
37



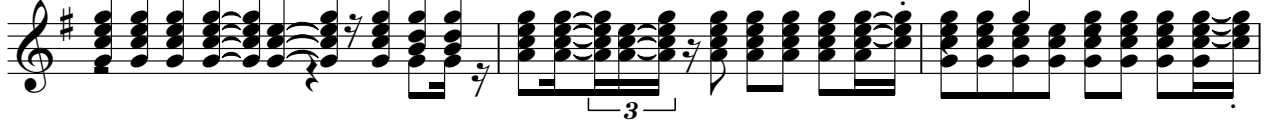
39



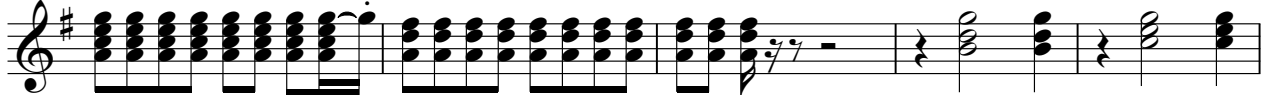
42



45



48



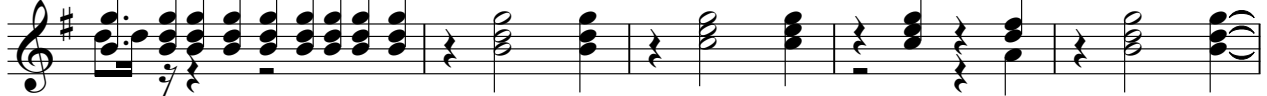
53



58



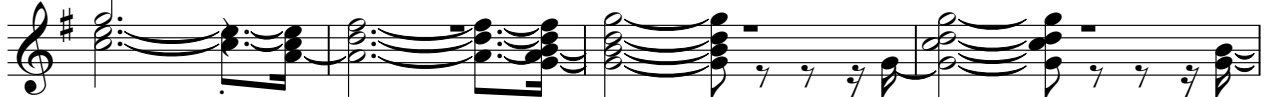
61



66



71



Jazz Guitar

75

♩ = 72,000031 ♩ = 65,999992 ♩ = 75,999969



Travis Tritt - Help Me Hold On
Electric Guitar

♩ = 75,999969
15

20

26 6 16

51 3

58

60 6 6 3

63 2

69 5 2

♩ = 72,000000,999992 = 75,999969

(C) 1994 Tune 1000 Corporation ;EMI Music/Sony/ATV Music Pub. Int'l Rights Secured.
(C) 1994 Tune 1000 Corporation ;EMI Music/Sony/ATV Music Pub. Int'l Rights Secured.

Travis Tritt - Help Me Hold On

Electric Guitar

♩ = 75,999969

5 23

This system of musical notation is written on a single staff in treble clef with a key signature of one sharp (F#) and a 4/4 time signature. It begins with a measure containing a whole rest, followed by a measure with a quarter rest. The third measure contains a series of eighth notes: F#4, G4, A4, B4, A4, G4, F#4, with a slur over the last three notes. The fourth measure contains a quarter note G4, a quarter note F#4, and a quarter rest. The fifth measure contains a whole rest. The system ends with a double bar line.

31

43 2

♩ = 72,999969

This system of musical notation continues on a single staff in treble clef with a key signature of one sharp (F#) and a 4/4 time signature. It starts with a measure containing a quarter rest, followed by a measure with a quarter rest. The third measure contains a series of eighth notes: F#4, G4, A4, B4, A4, G4, F#4, with a slur over the last three notes. The fourth measure contains a quarter note G4, a quarter note F#4, and a quarter rest. The fifth measure contains a whole rest. The sixth measure contains a whole rest. The system ends with a double bar line.

(C) 1994 Tune 1000 Corporation ;EMI Music/Sony/ATV Music Pub. Int'l Rights Secured.
(C) 1994 Tune 1000 Corporation ;EMI Music/Sony/ATV Music Pub. Int'l Rights Secured.

Travis Tritt - Help Me Hold On
Kora

♩ = 75,999969

6

3

10

3

14

17

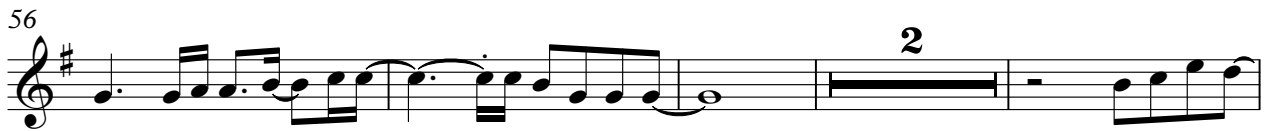
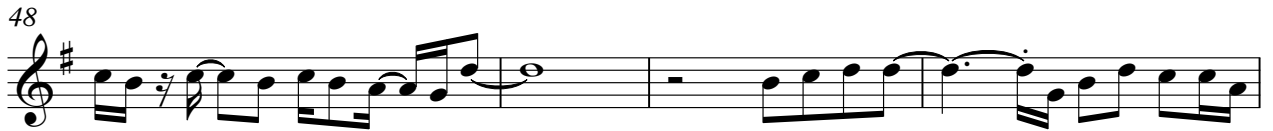
20

24

28

3

(C) 1994 Tune 1000 Corporation ;EMI Music/Sony/ATV Music Pub. Int'l Rights Secured.
(C) 1994 Tune 1000 Corporation ;EMI Music/Sony/ATV Music Pub. Int'l Rights Secured.



Kora

73

♩ = 72,000031 ♩ = 75,999969

2 2

Travis Tritt - Help Me Hold On
Kora

♩ = 75,999969

21

25

29 5

38 3

44 2

49

54

58 2

64

68 6 2

♩ = 72,00003999992 = 75,999969

(C) 1994 Tune 1000 Corporation ;EMI Music/Sony/ATV Music Pub. Int'l Rights Secured.
(C) 1994 Tune 1000 Corporation ;EMI Music/Sony/ATV Music Pub. Int'l Rights Secured.

Travis Tritt - Help Me Hold On

Fretless Electric Bass

♩ = 75,999969

2

8

15

20

24

29

34

39

44

49

V.S.

(C) 1994 Tune 1000 Corporation ;EMI Music/Sony/ATV Music Pub. Int'l Rights Secured.
(C) 1994 Tune 1000 Corporation ;EMI Music/Sony/ATV Music Pub. Int'l Rights Secured.

52



57



61



66



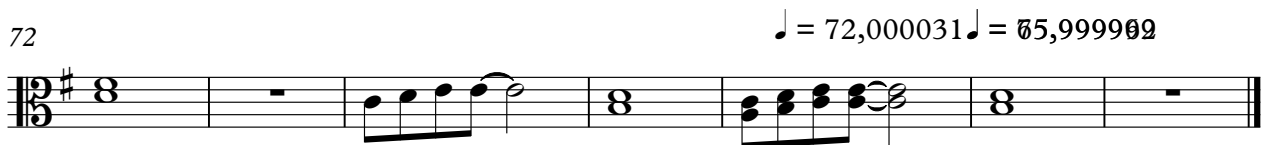
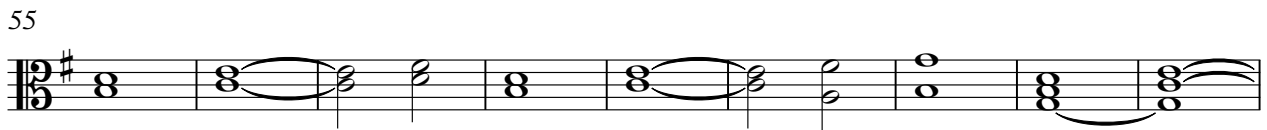
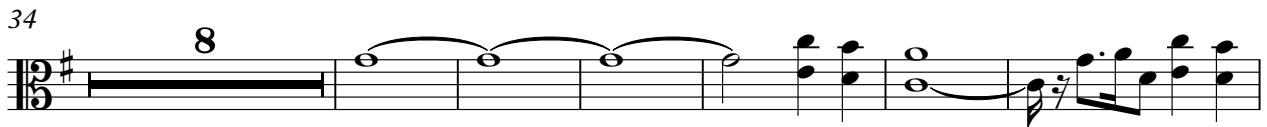
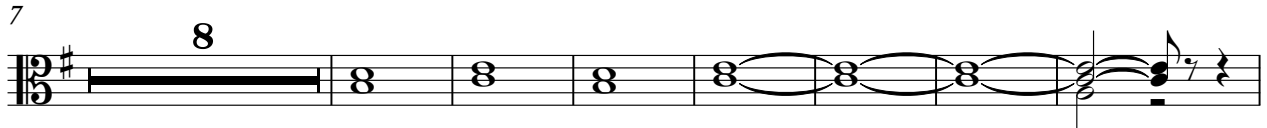
71

♩ = 72,000,000 275,999,969



Travis Tritt - Help Me Hold On
Viola

♩ = 75,999969



(C) 1994 Tune 1000 Corporation ;EMI Music/Sony/ATV Music Pub. Int'l Rights Secured.
(C) 1994 Tune 1000 Corporation ;EMI Music/Sony/ATV Music Pub. Int'l Rights Secured.

Travis Tritt - Help Me Hold On

Solo

♩ = 75,999969

2

6

7

17

22

7

32

24

58

3

61

7

70

74

♩ = 72,000031 ♩ = 65,9999999969

(C) 1994 Tune 1000 Corporation ;EMI Music/Sony/ATV Music Pub. Int'l Rights Secured.
(C) 1994 Tune 1000 Corporation ;EMI Music/Sony/ATV Music Pub. Int'l Rights Secured.