

UB 40 - Maybe Tomorrow

♩ = 188,007034

TRUMPET

TROMBONE

DRUMS

MUTED GTR

ACOU BASS

ORGAN 1

♩ = 188,007034

4

TRUMPET

TROMBONE

DRUMS

MUTED GTR

ACOU BASS

7

TRUMPET

TROMBONE

DRUMS

MUTED GTR

ACOU BASS

10

TRUMPET

TROMBONE

DRUMS

MUTED GTR

ACOU BASS

13

TRUMPET

TROMBONE

DRUMS

MUTED GTR

ACOU BASS

Detailed description: This system covers measures 13, 14, and 15. The Trumpet and Trombone parts are written in treble and bass clefs respectively, with a key signature of one sharp (F#). In measure 13, both instruments play a long, sustained note. In measures 14 and 15, they play eighth-note patterns. The Drums part uses a standard drum notation with 'x' marks for cymbals. The Muted Guitar part consists of chords and single notes in the treble clef. The Acoustic Bass part consists of eighth-note patterns in the bass clef.

16

TRUMPET

TROMBONE

DRUMS

MUTED GTR

ACOU BASS

Detailed description: This system covers measures 16, 17, and 18. The Trumpet and Trombone parts are written in treble and bass clefs respectively, with a key signature of one sharp (F#). In measure 16, both instruments play eighth-note patterns. In measure 17, they play a long, sustained note. In measure 18, they play eighth-note patterns. The Drums part uses a standard drum notation with 'x' marks for cymbals. The Muted Guitar part consists of chords and single notes in the treble clef. The Acoustic Bass part consists of eighth-note patterns in the bass clef.

19

DRUMS

MUTED GTR

ACOU BASS

ORGAN 1

22

DRUMS

MUTED GTR

ACOU BASS

ORGAN 1

25

DRUMS

MUTED GTR

ACOU BASS

ORGAN 1

28

DRUMS

MUTED GTR

ACOU BASS

ORGAN 1

Detailed description: This system covers measures 28, 29, and 30. The Drums part features a consistent pattern of eighth notes with 'x' marks above them, indicating a specific drum sound. The Muted Guitar part consists of a series of chords, primarily triads, with a sharp sign indicating a specific key signature. The Acoustic Bass part provides a steady bass line with eighth notes. The Organ 1 part has a sparse texture, with a few chords and a long, sustained note in the final measure.

31

DRUMS

MUTED GTR

ACOU BASS

ORGAN 1

Detailed description: This system covers measures 31, 32, and 33. The Drums part continues with the same eighth-note pattern. The Muted Guitar part maintains its chordal structure. The Acoustic Bass part continues with its eighth-note bass line. The Organ 1 part has a more active role in this section, with several chords and a melodic line in the final measure.

34

DRUMS

MUTED GTR

ACOU BASS

ORGAN 1

Detailed description: This system covers measures 34, 35, and 36. The Drums part continues with the eighth-note pattern. The Muted Guitar part continues with its chordal structure. The Acoustic Bass part continues with its eighth-note bass line. The Organ 1 part has a sparse texture, with a few chords and a long, sustained note in the final measure.

37

DRUMS

MUTED GTR

ACOU BASS

ORGAN 1

40

DRUMS

MUTED GTR

ACOU BASS

ORGAN 1

43

DRUMS

MUTED GTR

ACOU BASS

ORGAN 1

46

DRUMS

MUTED GTR

ACOU BASS

ORGAN 1

Detailed description: This system covers measures 46, 47, and 48. The Drums part features a consistent pattern of eighth notes with 'x' marks above them, indicating a specific drum sound. The Muted Guitar part consists of a series of chords, primarily triads, with a sharp sign indicating a specific chord quality. The Acoustic Bass part provides a steady eighth-note accompaniment. The Organ 1 part features a melodic line with a sharp sign and a 7/7 time signature, interspersed with sustained chords.

49

DRUMS

MUTED GTR

ACOU BASS

ORGAN 1

Detailed description: This system covers measures 49, 50, and 51. The Drums part continues with the same eighth-note pattern. The Muted Guitar part shows a progression of chords, including some with a sharp sign. The Acoustic Bass part maintains the eighth-note accompaniment. The Organ 1 part has a melodic line with a sharp sign and a 7/7 time signature, along with sustained chords.

52

DRUMS

MUTED GTR

ACOU BASS

ORGAN 1

Detailed description: This system covers measures 52, 53, and 54. The Drums part continues with the eighth-note pattern. The Muted Guitar part features a progression of chords, including some with a sharp sign. The Acoustic Bass part continues with the eighth-note accompaniment. The Organ 1 part has a melodic line with a sharp sign and a 7/7 time signature, along with sustained chords.

55

DRUMS

MUTED GTR

ACOU BASS

ORGAN 1

58

DRUMS

MUTED GTR

ACOU BASS

ORGAN 1

61

DRUMS

MUTED GTR

ACOU BASS

ORGAN 1

64

DRUMS

MUTED GTR

ACOU BASS

ORGAN 1

67

TRUMPET

TROMBONE

DRUMS

MUTED GTR

ACOU BASS

ORGAN 1

70

TRUMPET

TROMBONE

DRUMS

MUTED GTR

ACOU BASS

73

TRUMPET

TROMBONE

DRUMS

MUTED GTR

ACOU BASS

76

TRUMPET

TROMBONE

DRUMS

MUTED GTR

ACOU BASS

79

TRUMPET

TROMBONE

DRUMS

MUTED GTR

ACOU BASS

82

TRUMPET

TROMBONE

DRUMS

MUTED GTR

ACOU BASS

85

DRUMS

MUTED GTR

ACOU BASS

ORGAN 1

87

DRUMS

MUTED GTR

ACOU BASS

ORGAN 1

89

TRUMPET

TROMBONE

DRUMS

MUTED GTR

ACOU BASS

ORGAN 1

91

TRUMPET

TROMBONE

DRUMS

MUTED GTR

ACOU BASS

ORGAN 1

93

DRUMS

MUTED GTR

ACOU BASS

ORGAN 1

95

DRUMS

MUTED GTR

ACOU BASS

ORGAN 1

97

DRUMS

MUTED GTR

ACOU BASS

ORGAN 1

99

DRUMS

MUTED GTR

ACOU BASS

ORGAN 1

101

DRUMS

MUTED GTR

ACOU BASS

ORGAN 1

103

DRUMS

MUTED GTR

ACOU BASS

ORGAN 1

105

DRUMS

MUTED GTR

ACOU BASS

ORGAN 1

107

DRUMS

MUTED GTR

ACOU BASS

ORGAN 1

109

DRUMS

MUTED GTR

ACOU BASS

ORGAN 1

111

DRUMS

MUTED GTR

ACOU BASS

ORGAN 1

113

DRUMS

MUTED GTR

ACOU BASS

ORGAN 1

115

DRUMS

MUTED GTR

ACOU BASS

ORGAN 1

117

DRUMS

MUTED GTR

ACOU BASS

ORGAN 1

119

DRUMS

MUTED GTR

ACOU BASS

ORGAN 1

121

TRUMPET

TROMBONE

DRUMS

MUTED GTR

ACOU BASS

ORGAN 1

123

TRUMPET

TROMBONE

DRUMS

MUTED GTR

ACOU BASS

ORGAN 1

Detailed description of the musical score for measures 123-124: The score is for a jazz ensemble. The Trumpet part (treble clef) has a melodic line with two triplet eighth notes in measure 123 and a long note in measure 124. The Trombone part (bass clef) has a bass line with a triplet eighth note in measure 123 and a long note in measure 124. The Drums part (drum set) has a steady rhythm with snare and cymbal patterns. The Muted Guitar part (treble clef) has a rhythmic accompaniment with muted notes. The Acoustic Bass part (bass clef) has a bass line with quarter and eighth notes. The Organ 1 part (treble clef) has a chordal accompaniment and a melodic line.

125

TRUMPET

TROMBONE

DRUMS

MUTED GTR

ACOU BASS

ORGAN 1

Detailed description of the musical score for measures 125-126: The score continues from the previous system. The Trumpet and Trombone parts are mostly silent, with some notes in measure 125. The Drums part (drum set) continues with its steady rhythm. The Muted Guitar part (treble clef) continues with its rhythmic accompaniment. The Acoustic Bass part (bass clef) continues with its bass line. The Organ 1 part (treble clef) continues with its chordal accompaniment and melodic line.

127

DRUMS

MUTED GTR

ACOU BASS

ORGAN 1

130

DRUMS

MUTED GTR

ACOU BASS

ORGAN 1

132

DRUMS

MUTED GTR

ACOU BASS

ORGAN 1

134

DRUMS

MUTED GTR

ACOU BASS

ORGAN 1

136

DRUMS

MUTED GTR

ACOU BASS

ORGAN 1

138

DRUMS

MUTED GTR

ACOU BASS

ORGAN 1

140

DRUMS

MUTED GTR

ACOU BASS

ORGAN 1

142

DRUMS

MUTED GTR

ACOU BASS

ORGAN 1

144

TRUMPET

DRUMS

MUTED GTR

ACOU BASS

ORGAN 1

146

TRUMPET

TROMBONE

DRUMS

MUTED GTR

ACOU BASS

ORGAN 1

148

TRUMPET

TROMBONE

DRUMS

MUTED GTR

ACOU BASS

150

TRUMPET

TROMBONE

DRUMS

MUTED GTR

ACOU BASS

152

TRUMPET

TROMBONE

DRUMS

MUTED GTR

ACOU BASS

154

TRUMPET

TROMBONE

DRUMS

MUTED GTR

ACOU BASS

157

TRUMPET

TROMBONE

DRUMS

MUTED GTR

ACOU BASS

160

TRUMPET

TROMBONE

DRUMS

MUTED GTR

ACOU BASS

162

TRUMPET

TROMBONE

DRUMS

MUTED GTR

ACOU BASS

ORGAN 1

The musical score for page 28, measures 162-164, is as follows:

- TRUMPET:** Measure 162: Treble clef, whole note chord (G4, B4, D5). Measure 163: Treble clef, quarter note G4, quarter rest, quarter note G4, quarter rest. Measure 164: Treble clef, whole rest.
- TROMBONE:** Measure 162: Bass clef, whole note chord (G3, B3, D4). Measure 163: Bass clef, quarter note G3, quarter rest, quarter note G3, quarter rest. Measure 164: Bass clef, whole rest.
- DRUMS:** Measure 162: Drum set symbol with a diamond above it. Measure 163: Drum set symbol. Measure 164: Drum set symbol.
- MUTED GTR:** Measure 162: Treble clef, whole note chord (G4, B4, D5). Measure 163: Treble clef, quarter rest, quarter note G4, quarter rest. Measure 164: Treble clef, whole rest.
- ACOU BASS:** Measure 162: Bass clef, whole note chord (G3, B3, D4). Measure 163: Bass clef, quarter note G3, quarter rest, quarter note G3, quarter rest. Measure 164: Bass clef, whole rest.
- ORGAN 1:** Measure 162: Treble clef, whole note chord (G4, B4, D5). Measure 163: Treble clef, whole note chord (G4, B4, D5). Measure 164: Treble clef, quarter note G4, quarter rest, quarter note G4, quarter rest.

UB 40 - Maybe Tomorrow

TRUMPET

♩ = 188,007034
TRUMPET

6

11

16

68

73

77

82

90

122

TRUMPET

145



151



156



160



TROMBONE

UB 40 - Maybe Tomorrow

♩ = 188,007034
TROMBONE

2

TROMBONE

147

Musical notation for Trombone, measures 147-151. The notation is in bass clef. Measure 147 starts with a whole rest, followed by a triplet of eighth notes. Measure 148 contains eighth notes with slurs. Measure 149 features a triplet of eighth notes. Measure 150 has a half note with a slur. Measure 151 ends with a quarter note.

152

Musical notation for Trombone, measures 152-155. Measure 152 begins with eighth notes and a triplet. Measure 153 continues with eighth notes. Measure 154 includes a half note with a slur and a triplet. Measure 155 ends with a quarter note.

156

Musical notation for Trombone, measures 156-159. Measure 156 starts with eighth notes and a triplet. Measure 157 continues with eighth notes. Measure 158 has a half note with a slur. Measure 159 ends with a quarter note.

160

Musical notation for Trombone, measures 160-163. Measure 160 begins with eighth notes and a triplet. Measure 161 continues with eighth notes. Measure 162 has a half note with a slur. Measure 163 ends with a quarter rest.

UB 40 - Maybe Tomorrow

DRUMS

♩ = 188,007034
DRUMS

Musical notation for drums, measures 1-5. The notation is on a single staff with a 4/4 time signature. It shows a sequence of notes and rests, with 'x' marks above some notes indicating specific drum sounds. The first measure is a whole rest. The second measure starts with a quarter rest followed by a quarter note. The subsequent measures contain eighth and quarter notes.

6

Measures 6-10 of the drum part. The notation continues with eighth and quarter notes, maintaining the rhythmic pattern established in the previous measures.

11

Measures 11-15 of the drum part. The notation continues with eighth and quarter notes, maintaining the rhythmic pattern established in the previous measures.

16

Measures 16-20 of the drum part. The notation continues with eighth and quarter notes, maintaining the rhythmic pattern established in the previous measures.

21

Measures 21-25 of the drum part. The notation continues with eighth and quarter notes, maintaining the rhythmic pattern established in the previous measures.

26

Measures 26-30 of the drum part. The notation continues with eighth and quarter notes, maintaining the rhythmic pattern established in the previous measures.

31

Measures 31-35 of the drum part. The notation continues with eighth and quarter notes, maintaining the rhythmic pattern established in the previous measures.

36

Measures 36-40 of the drum part. The notation continues with eighth and quarter notes, maintaining the rhythmic pattern established in the previous measures.

41

Measures 41-45 of the drum part. The notation continues with eighth and quarter notes, maintaining the rhythmic pattern established in the previous measures.

46

Measures 46-50 of the drum part. The notation continues with eighth and quarter notes, maintaining the rhythmic pattern established in the previous measures.

V.S.

DRUMS

50



55



60



65



70



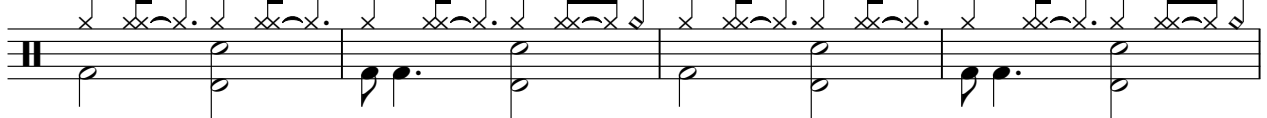
75



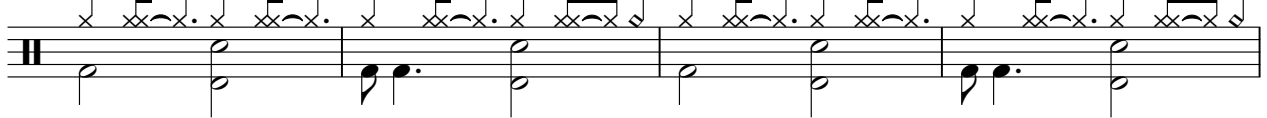
80



85



89



93



DRUMS

97

Musical notation for drum set at measure 97. The top staff shows a drum set with 'x' marks for snare and tom hits. The bottom staff shows a bass line with quarter notes and eighth notes.

101

Musical notation for drum set at measure 101. The top staff shows a drum set with 'x' marks for snare and tom hits. The bottom staff shows a bass line with quarter notes and eighth notes.

105

Musical notation for drum set at measure 105. The top staff shows a drum set with 'x' marks for snare and tom hits. The bottom staff shows a bass line with quarter notes and eighth notes.

109

Musical notation for drum set at measure 109. The top staff shows a drum set with 'x' marks for snare and tom hits. The bottom staff shows a bass line with quarter notes and eighth notes.

113

Musical notation for drum set at measure 113. The top staff shows a drum set with 'x' marks for snare and tom hits. The bottom staff shows a bass line with quarter notes and eighth notes.

117

Musical notation for drum set at measure 117. The top staff shows a drum set with 'x' marks for snare and tom hits. The bottom staff shows a bass line with quarter notes and eighth notes.

121

Musical notation for drum set at measure 121. The top staff shows a drum set with 'x' marks for snare and tom hits. The bottom staff shows a bass line with quarter notes and eighth notes.

125

Musical notation for drum set at measure 125. The top staff shows a drum set with 'x' marks for snare and tom hits. The bottom staff shows a bass line with quarter notes and eighth notes.

129

Musical notation for drum set at measure 129. The top staff shows a drum set with 'x' marks for snare and tom hits. The bottom staff shows a bass line with quarter notes and eighth notes.

133

Musical notation for drum set at measure 133. The top staff shows a drum set with 'x' marks for snare and tom hits. The bottom staff shows a bass line with quarter notes and eighth notes.

V.S.

DRUMS

137

Musical notation for drum set, measures 137-140. The top staff shows a consistent pattern of eighth notes with 'x' marks above them, representing a snare drum. The bottom staff shows a bass drum pattern with quarter notes and eighth notes.

141

Musical notation for drum set, measures 141-144. The top staff shows a consistent pattern of eighth notes with 'x' marks above them, representing a snare drum. The bottom staff shows a bass drum pattern with quarter notes and eighth notes.

145

Musical notation for drum set, measures 145-148. The top staff shows a consistent pattern of eighth notes with 'x' marks above them, representing a snare drum. The bottom staff shows a bass drum pattern with quarter notes and eighth notes.

149

Musical notation for drum set, measures 149-152. The top staff shows a consistent pattern of eighth notes with 'x' marks above them, representing a snare drum. The bottom staff shows a bass drum pattern with quarter notes and eighth notes.

153

Musical notation for drum set, measures 153-156. The top staff shows a consistent pattern of eighth notes with 'x' marks above them, representing a snare drum. The bottom staff shows a bass drum pattern with quarter notes and eighth notes.

157

Musical notation for drum set, measures 157-159. The top staff shows a consistent pattern of eighth notes with 'x' marks above them, representing a snare drum. The bottom staff shows a bass drum pattern with quarter notes and eighth notes.

160

Musical notation for drum set, measures 160-161. The top staff shows a consistent pattern of eighth notes with 'x' marks above them, representing a snare drum. The bottom staff shows a bass drum pattern with quarter notes and eighth notes. A double bar line is present at the end of the system with a '2' above it.

UB 40 - Maybe Tomorrow

MUTED GTR

♩ = 188,007034
MUTED GTR



V.S.

52



57



62



67



72



77



82



87



92



97



102



107



112



117



122



127



132



137



142



147



V.S.

152



157



160



UB 40 - Maybe Tomorrow

ACOU BASS

♩ = 188,007034
ACOU BASS



V.S.



102



106



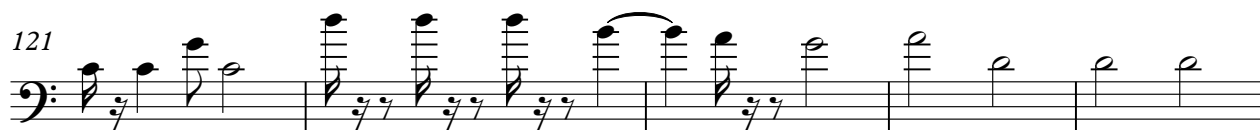
111



116



121



126



131



136



141



146



ACOU BASS

151



156



160



UB 40 - Maybe Tomorrow

ORGAN 1

♩ = 188,007034
ORGAN 1 **18**

24

31

37

44

50

57

64 **16**

85



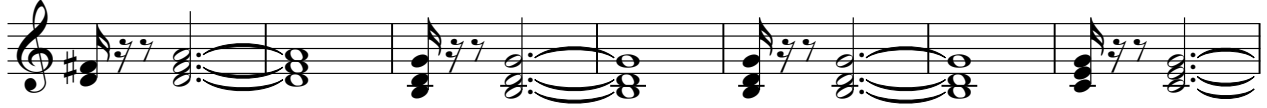
91



98



105



112



119



126



133



140



146

