

Umberto Balsamo - L'Angelo Azzurro

♩ = 110,000916
MELODY

MELODY

FLUTE 2

FLUTE 2

FLUTE 1

FLUTE 1

DRUMS

DRUMS

BELLS

BELLS

A.GUITAR

A.GUITAR

E.GUITAR

E.GUITAR

L'ANGELO AZZURRO

L'ANGELO A

PAD 1

PAD 1

PAD 2

PAD 2

SYNTH

SYNTH

♩ = 110,000916
STRINGS

STRINGS



5

DRUMS

BELLS

A.GUITAR

L'ANGELO A

PAD 1

STRINGS

8

DRUMS

BELLS

A.GUITAR

L'ANGELO A

PAD 1

PAD 2

STRINGS

Detailed description: This system covers measures 8, 9, and 10. The drums play a steady quarter-note pattern. The bells play a melodic line starting in measure 9. The acoustic guitar plays a complex, rhythmic pattern of chords. The L'ANGELO A part features a bass line with a prominent eighth-note pattern. Pads 1 and 2 provide harmonic support with sustained chords. The strings play a low, sustained chord.

11

DRUMS

A.GUITAR

E.GUITAR

L'ANGELO A

PAD 1

PAD 2

STRINGS

Detailed description: This system covers measures 11, 12, and 13. The drums continue their pattern. The acoustic guitar plays a similar complex pattern to the previous system. The electric guitar enters in measure 11 with a melodic line. The L'ANGELO A part continues with its bass line. Pads 1 and 2 have sustained chords. The strings are silent.

14

MELODY

DRUMS

A.GUITAR

L'ANGELO A

PAD 1

PAD 2

Detailed description: This system covers measures 14, 15, and 16. A new MELODY part is introduced in measure 14. The drums play a pattern with a slight change in the final measure. The acoustic guitar continues its complex pattern. The L'ANGELO A part features a bass line with a melodic contour. Pads 1 and 2 have sustained chords. The strings are silent.

16

MELODY
DRUMS
A.GUITAR
L'ANGELO A
PAD 1
PAD 2
SYNTH
STRINGS

Detailed description: This musical score block covers measures 16 and 17. The MELODY part is in treble clef, 6/8 time, with a key signature of one flat. It features a melodic line with eighth and sixteenth notes. The DRUMS part is in a 2/4 time signature, showing a consistent rhythmic pattern. The A.GUITAR part is in treble clef, 6/8 time, featuring a complex, rhythmic accompaniment with many beamed notes. The L'ANGELO A part is in bass clef, 6/8 time, with a melodic line. The PAD 1 and PAD 2 parts are in treble clef, 4/4 time, with long, sustained notes. The SYNTH part is in treble clef, 4/4 time, with a long, sustained note. The STRINGS part is in treble clef, 4/4 time, with a long, sustained note.



18

MELODY
DRUMS
A.GUITAR
L'ANGELO A
PAD 1
PAD 2
SYNTH

Detailed description: This musical score block covers measures 18, 19, and 20. The MELODY part continues in treble clef, 6/8 time. The DRUMS part continues in 2/4 time. The A.GUITAR part continues in treble clef, 6/8 time. The L'ANGELO A part continues in bass clef, 6/8 time. The PAD 1 and PAD 2 parts are in treble clef, 4/4 time, with long, sustained notes. The SYNTH part is in treble clef, 4/4 time, with long, sustained notes.

21

MELODY

DRUMS

BELLS

A.GUITAR

L'ANGELO A

PAD 1

PAD 2

SYNTH

STRINGS



24

MELODY

DRUMS

BELLS

A.GUITAR

E.GUITAR

L'ANGELO A

PAD 1

PAD 2

SYNTH

26

MELODY

DRUMS

A.GUITAR

E.GUITAR

L'ANGELO A

SYNTH



29

MELODY

DRUMS

A.GUITAR

E.GUITAR

L'ANGELO A

SYNTH

32

MELODY

DRUMS

A.GUITAR

E.GUITAR

L'ANGELO A

PAD 1

PAD 2

SYNTH

STRINGS



35

MELODY

DRUMS

A.GUITAR

E.GUITAR

L'ANGELO A

STRINGS

37

MELODY

DRUMS

A.GUITAR

E.GUITAR

L'ANGELO A

PAD 1

PAD 2

STRINGS



39

MELODY

DRUMS

A.GUITAR

E.GUITAR

L'ANGELO A

PAD 1

PAD 2

SYNTH

41

MELODY

DRUMS

A.GUITAR

E.GUITAR

L'ANGELO A

PAD 1

PAD 2

SYNTH



44

MELODY

DRUMS

A.GUITAR

E.GUITAR

L'ANGELO A

PAD 1

PAD 2

SYNTH

46

MELODY

FLUTE 1

DRUMS

A.GUITAR

E.GUITAR

L'ANGELO A

PAD 1

PAD 2

SYNTH

STRINGS



49

FLUTE 1

DRUMS

A.GUITAR

E.GUITAR

L'ANGELO A

PAD 1

PAD 2

SYNTH

STRINGS

52

MELODY

FLUTE 1

DRUMS

A. GUITAR

E. GUITAR

L'ANGELO A

PAD 1

PAD 2

SYNTH

STRINGS



55

MELODY

DRUMS

A. GUITAR

E. GUITAR

L'ANGELO A

PAD 1

PAD 2

STRINGS

57

MELODY

DRUMS

A.GUITAR

E.GUITAR

L'ANGELO A

PAD 1

PAD 2

STRINGS



60

MELODY

DRUMS

BELLS

A.GUITAR

E.GUITAR

L'ANGELO A

PAD 1

PAD 2

SYNTH

STRINGS

63

MELODY

DRUMS

BELLS

A.GUITAR

E.GUITAR

L'ANGELO A

PAD 1

PAD 2

SYNTH

STRINGS

66

MELODY

FLUTE 1

DRUMS

BELLS

A. GUITAR

E. GUITAR

L'ANGELO A

PAD 1

PAD 2

SYNTH

STRINGS

69

FLUTE 2

FLUTE 1

DRUMS

BELLS

A. GUITAR

E. GUITAR

L'ANGELO A

PAD 1

PAD 2

SYNTH

STRINGS

Detailed description: This page of a musical score covers measures 69, 70, and 71. The score is arranged in a vertical stack of staves. At the top, measure 69 is indicated. The instruments and their parts are: FLUTE 2 (mostly rests, with a melodic phrase in measure 71), FLUTE 1 (melodic line with triplets in measures 69 and 70), DRUMS (a consistent rhythmic pattern of eighth notes), BELLS (melodic line with eighth notes), A. GUITAR (chordal accompaniment with arpeggiated chords), E. GUITAR (melodic line with eighth notes), L'ANGELO A (bass line with eighth notes), PAD 1 (sustained chords), PAD 2 (sustained chords), SYNTH (sustained chords), and STRINGS (sustained chords). The key signature has one flat (B-flat), and the time signature is 4/4.

72

FLUTE 2

DRUMS

BELLS

A.GUITAR

E.GUITAR

L'ANGELO A

PAD 1

PAD 2

SYNTH

STRINGS



75

FLUTE 1

DRUMS

BELLS

A.GUITAR

E.GUITAR

L'ANGELO A

PAD 1

PAD 2

SYNTH

STRINGS

78

FLUTE 1

DRUMS

BELLS

A.GUITAR

E.GUITAR

L'ANGELO A

PAD 1

PAD 2

SYNTH

STRINGS

81

FLUTE 1

DRUMS

BELLS

A.GUITAR

E.GUITAR

L'ANGELO A

PAD 1

PAD 2

SYNTH

STRINGS

Detailed description of the musical score: The score is for page 16, measures 78 to 81. It features a multi-instrumental arrangement. The Flute 1 part (measures 78-81) has a melodic line with various accidentals and rests. The Drums part consists of a steady, rhythmic pattern. The Bells part has a melodic line with some rests. The Acoustic Guitar part features a complex, rhythmic pattern with many chords. The Electric Guitar part has a melodic line with some rests. The L'Angelo A part has a melodic line with some rests. The Pad 1 and Pad 2 parts have sustained chords. The Synth part has a sustained chord. The Strings part has a sustained chord. A double bar line is present between measures 78 and 81.

84 17

DRUMS

A.GUITAR

L'ANGELO A

SYNTH



86

MELODY

FLUTE 2

FLUTE 1

DRUMS

BELLS

A.GUITAR

E.GUITAR

L'ANGELO A

PAD 1

PAD 2

SYNTH

STRINGS

Umberto Balsamo - L'Angelo Azzurro

MELODY

♩ = 110,000916
MELODY 14

17

20

24

27

30

34

38

41

44

7

54



57



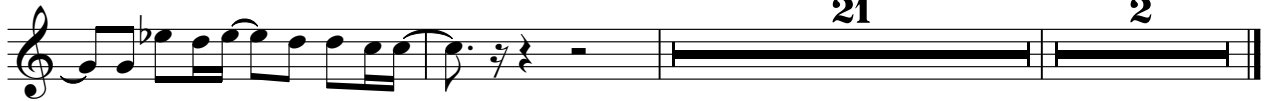
61



64



66



Umberto Balsamo - L'Angelo Azzurro

FLUTE 2

♩ = 110,000916
FLUTE 2

15 8

26

13 31

72

72

74

14 2

Umberto Balsamo - L'Angelo Azzurro

FLUTE 1

♩ = 110,000916
FLUTE 1

15 8

26 13 6

47

50

53 12

68 3

70 3

Detailed description: This image shows a musical score for Flute 1, consisting of seven staves of music. The score begins with a tempo marking of 110,000916 and the instrument name 'FLUTE 1'. The first staff (measures 15-8) shows a sequence of rests in 4/4, 6/4, 4/4, 6/4, and 4/4 time signatures. The second staff (measures 26-6) continues with rests in 4/4, 6/4, and 4/4, followed by a melodic phrase. The third staff (measure 47) and fourth staff (measures 50-52) contain complex melodic lines with many slurs and accents. The fifth staff (measures 53-67) features a long rest in measure 54, followed by a melodic phrase. The sixth staff (measures 68-69) and seventh staff (measures 70-71) conclude with melodic phrases, including a triplet in measure 70.

75



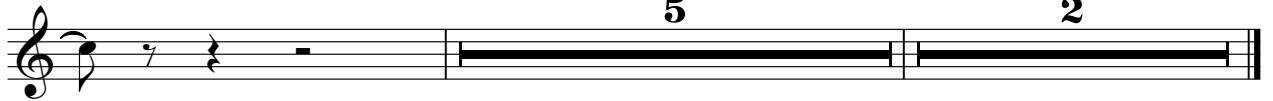
78



81



83



Umberto Balsamo - L'Angelo Azzurro

DRUMS

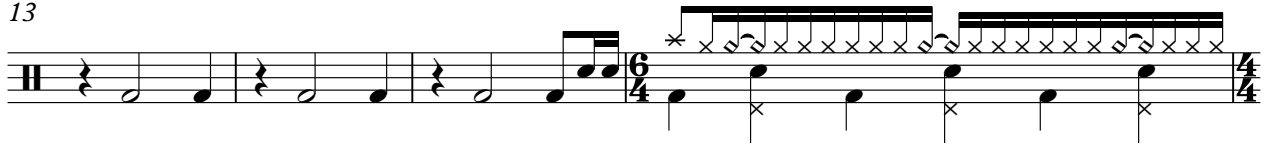
♩ = 110,000916
DRUMS



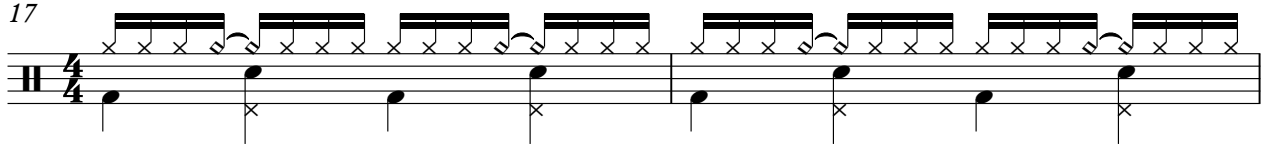
7



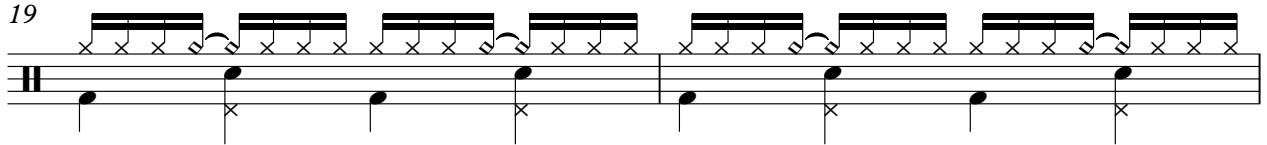
13



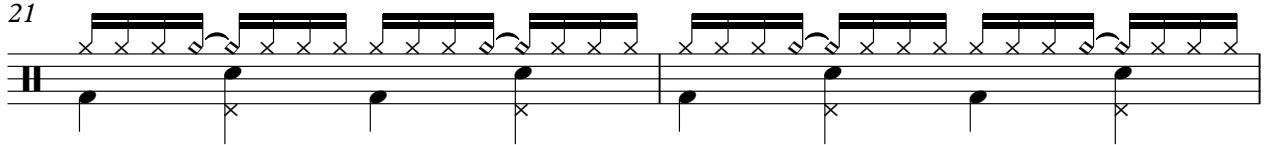
17



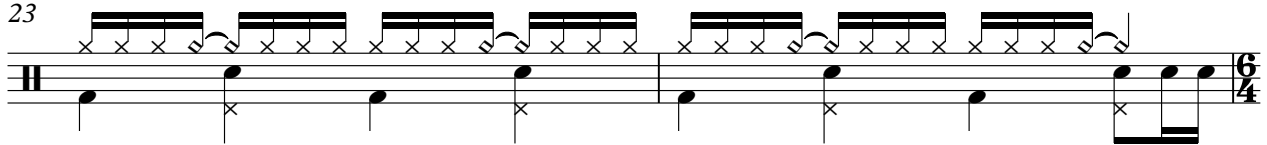
19



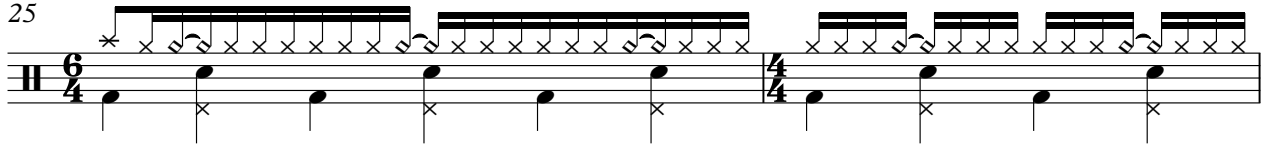
21



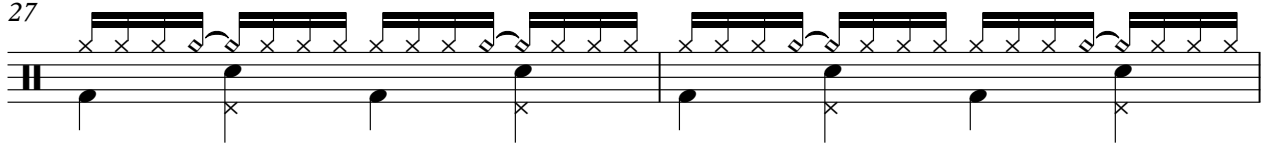
23



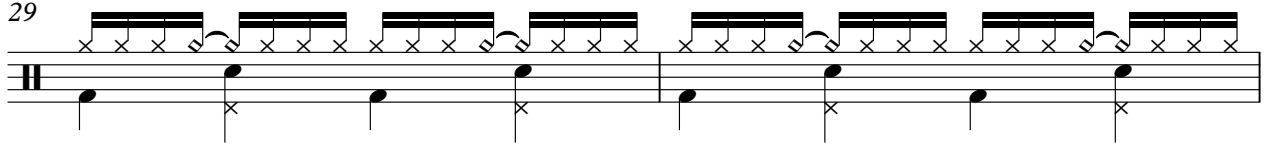
25



27



29



V.S.

DRUMS

31

Musical notation for drum set, measures 31-32. The top staff shows a snare drum pattern with eighth notes and beams. The bottom staff shows a bass drum pattern with quarter notes and rests.

33

Musical notation for drum set, measures 33-34. Similar to the previous system, but with a change in the bass drum pattern in measure 34.

35

Musical notation for drum set, measures 35-36. Similar to the previous system.

37

Musical notation for drum set, measures 37-38. Measure 38 features a change in the bass drum pattern, including a triplet of eighth notes.

39

Musical notation for drum set, measures 39-40. Measure 39 starts with a 6/4 time signature, and measure 40 changes to 4/4.

41

Musical notation for drum set, measures 41-42. Similar to the previous system.

43

Musical notation for drum set, measures 43-44. Similar to the previous system.

45

Musical notation for drum set, measures 45-46. Similar to the previous system.

47

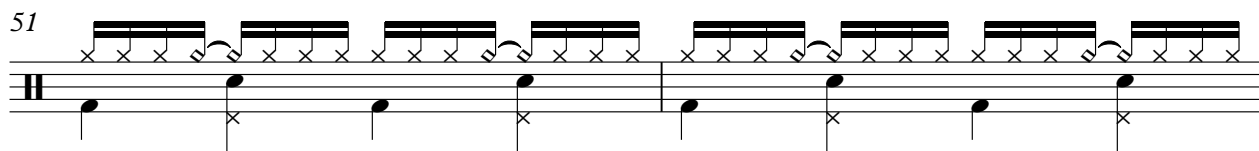
Musical notation for drum set, measures 47-48. Similar to the previous system.

49

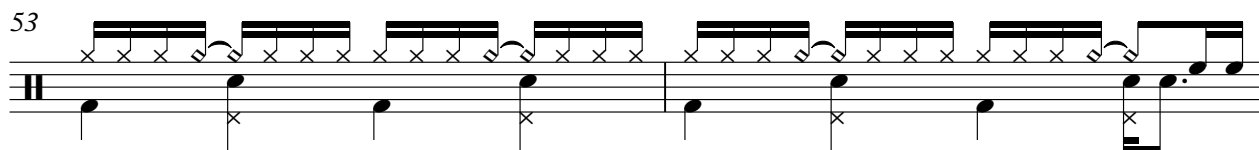
Musical notation for drum set, measures 49-50. Similar to the previous system.

DRUMS

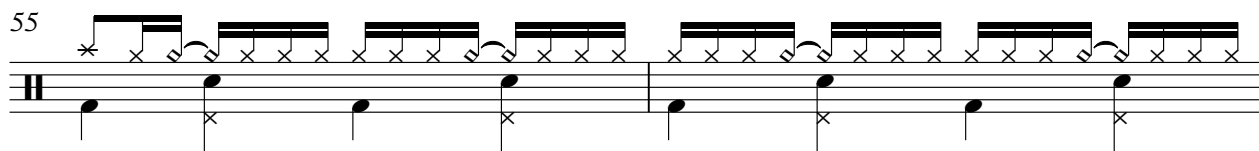
51



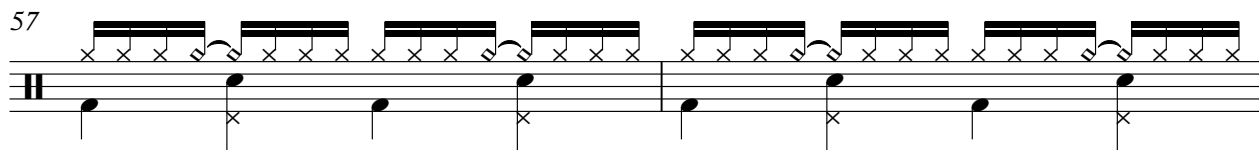
53



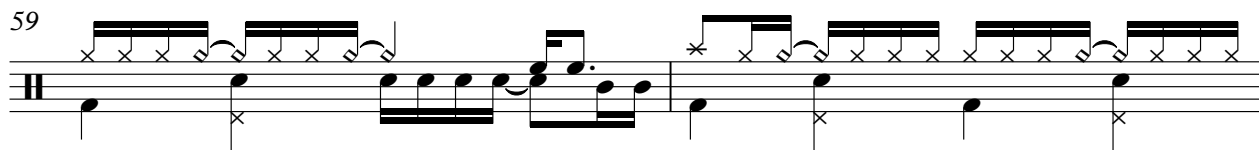
55



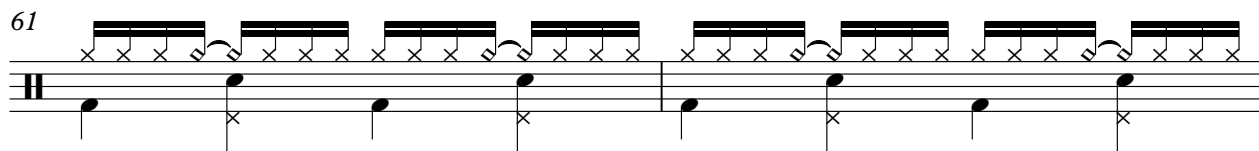
57



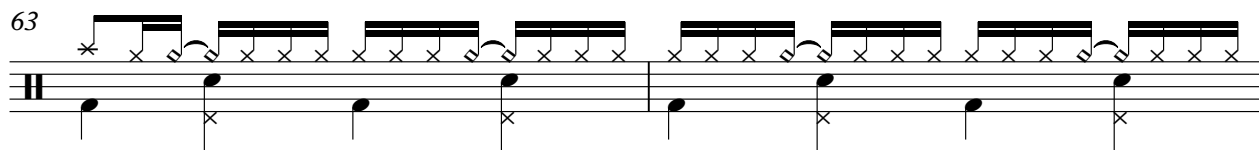
59



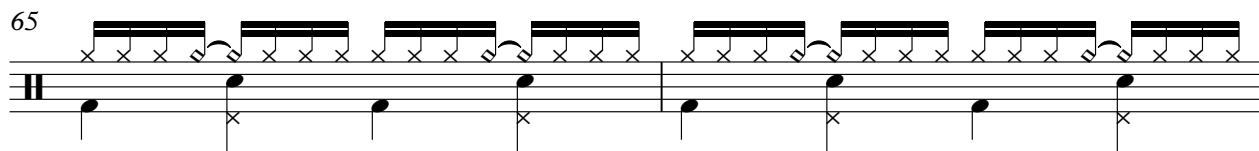
61



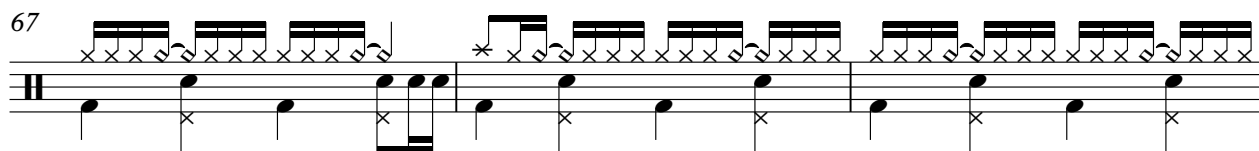
63



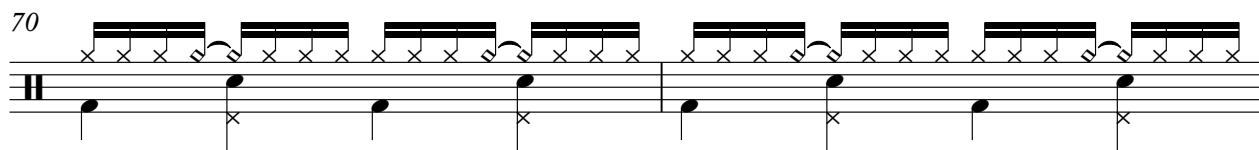
65



67



70



V.S.

DRUMS

72

Musical notation for drum part 72, consisting of two staves. The top staff features a series of eighth-note patterns with 'x' marks above them, indicating specific drum sounds. The bottom staff shows a bass line with quarter notes and rests.

74

Musical notation for drum part 74, consisting of two staves. The top staff features a series of eighth-note patterns with 'x' marks above them. The bottom staff shows a bass line with quarter notes and rests.

76

Musical notation for drum part 76, consisting of two staves. The top staff features a series of eighth-note patterns with 'x' marks above them. The bottom staff shows a bass line with quarter notes and rests.

78

Musical notation for drum part 78, consisting of two staves. The top staff features a series of eighth-note patterns with 'x' marks above them. The bottom staff shows a bass line with quarter notes and rests.

80

Musical notation for drum part 80, consisting of two staves. The top staff features a series of eighth-note patterns with 'x' marks above them. The bottom staff shows a bass line with quarter notes and rests.

82

Musical notation for drum part 82, consisting of two staves. The top staff features a series of eighth-note patterns with 'x' marks above them. The bottom staff shows a bass line with quarter notes and rests.

85

Musical notation for drum part 85, consisting of two staves. The top staff features a series of eighth-note patterns with 'x' marks above them. The bottom staff shows a bass line with quarter notes and rests. A double bar line is present at the end of the system, with a '2' indicating a second ending.

Umberto Balsamo - L'Angelo Azzurro

BELLS

♩ = 110,000916
BELLS

4

9

5

6

23

13

40

20

63

67

71

75

79

82

5

2

Umberto Balsamo - L'Angelo Azzurro

A.GUITAR

♩ = 110,000916
A.GUITAR

4

6

8

10

12

14

16

17

19

6/4

V.S.

21

23

25

26

28

30

32

34

36

38

39

40

42

44

46

48

50

52

54

56

V.S.

A.GUITAR

58

60

62

64

66

68

70

72

74

76

78

Musical notation for measures 78 and 79. Measure 78 begins with a treble clef, a key signature of one flat (B-flat), and a common time signature. It features a complex rhythmic pattern of chords and single notes. Measure 79 continues this pattern with similar chordal textures and melodic lines.

80

Musical notation for measures 80 and 81. Measure 80 shows a continuation of the chordal and melodic motifs from the previous measures. Measure 81 introduces a slight variation in the rhythmic phrasing of the chords.

82

Musical notation for measures 82 and 83. Measure 82 maintains the established harmonic and melodic language. Measure 83 features a more active melodic line in the upper voice of the guitar.

84

Musical notation for measures 84 and 85. Measure 84 contains a series of chords with some melodic movement. Measure 85 concludes the phrase with a final chord and a melodic flourish.

86

Musical notation for measures 86 and 87. Measure 86 shows a final chordal texture. Measure 87 is a whole rest, with a '2' written above the staff, indicating a double bar line or a specific performance instruction.

Umberto Balsamo - L'Angelo Azzurro

E.GUITAR

♩ = 110,000916

E.GUITAR

10 3

17 8

28 2

34

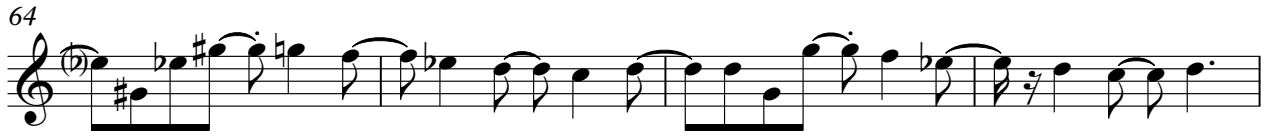
38

42

47

52

56



5

2

Umberto Balsamo - L`Angelo Azzurro

L'ANGELO A

♩ = 110,000916

L'ANGELO AZZURRO



6



10



14



17



21



25



28



32



36



V.S.

39



42



46



50



54



58



62



65



68



71



L'ANGELO A

74



77



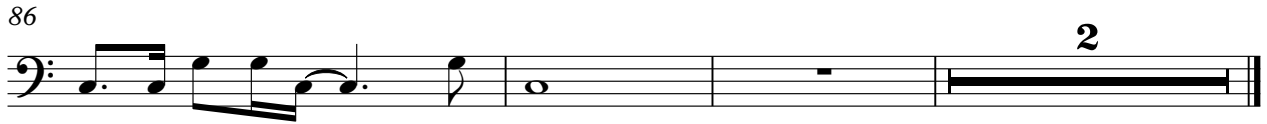
80



83



86



2

Umberto Balsamo - L'Angelo Azzurro

PAD 1

♩ = 110,000916
PAD 1

3

11

19

32

40

49

58

67

76

82

5

2

Umberto Balsamo - L'Angelo Azzurro

PAD 2

♩ = 110,000916
PAD 2

9

16

25

38

47

56

64

72

79

6

3

5

2

Umberto Balsamo - L'Angelo Azzurro

SYNTH

♩ = 110,000916
SYNTH 15

22

30 6

43

51 6

64

72

80

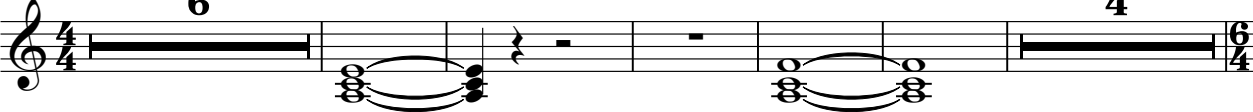
85 2

Umberto Balsamo - L'Angelo Azzurro

STRINGS

♩ = 110,000916
STRINGS

6




4

16



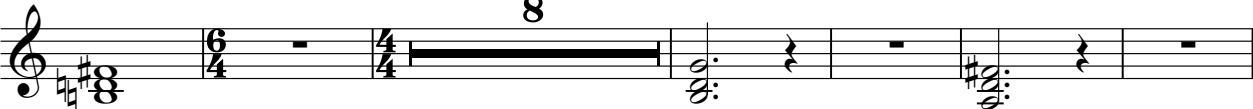
3

25




7

38



8

52




60



69



78



5

2