

Unknown - WELCOME TO MY WORLD

♪ = 81,000084
Welcome To My World. (Jim Reeves)

Sequenced by Chris.Hankins.
chris@daisydots.freereserve.co.uk

♪ = 81,000084

vox

ride

kick

gtr 1

R gtr

bass

string pa

strings 1

strings 2

5

vox

ride

kick

gtr 1

R gtr

bass

string pa

strings 1

strings 2



9

ride

kick

gtr 1

R gtr

bass

string pa

13

ride
kick
gtr 1
R gtr
bass
string pa
strings 2

Detailed description: This block contains the musical score for measures 13 through 16. The score is arranged in a grand staff with seven staves. The top two staves are for the drum kit: 'ride' (snare) and 'kick'. The next three staves are for guitar: 'gtr 1' (lead), 'R gtr' (rhythm), and 'bass'. The bottom two staves are for strings: 'string pa' (piano) and 'strings 2'. The key signature has one flat (B-flat). The time signature is 4/4. The 'ride' part consists of a steady eighth-note pattern. The 'kick' part has a simple quarter-note pattern. The 'gtr 1' part features a melodic line with a triplet in measure 15. The 'R gtr' part provides a complex harmonic accompaniment with many chords. The 'bass' part has a simple line of quarter notes. The 'string pa' part has a long, sustained chord in the first two measures. The 'strings 2' part has a simple line of quarter notes.



17

ride
kick
R gtr
bass
string pa
strings 1
strings 2

Detailed description: This block contains the musical score for measures 17 through 20. The score is arranged in a grand staff with seven staves. The top two staves are for the drum kit: 'ride' (snare) and 'kick'. The next three staves are for guitar: 'R gtr' (rhythm), 'bass', and 'string pa'. The bottom two staves are for strings: 'strings 1' and 'strings 2'. The key signature has one flat (B-flat). The time signature is 4/4. The 'ride' part consists of a steady eighth-note pattern. The 'kick' part has a simple quarter-note pattern. The 'R gtr' part provides a complex harmonic accompaniment with many chords. The 'bass' part has a simple line of quarter notes. The 'string pa' part has a long, sustained chord in the first two measures. The 'strings 1' part has a simple line of quarter notes. The 'strings 2' part has a simple line of quarter notes.

21

vox

ride

kick

R gtr

bass

string pa

strings 1

strings 2



25

vox

ride

bass

string pa

strings 1

strings 2

29

vox

ride

kick

R gtr

bass

string pa

strings 1

strings 2



33

vox

ride

kick

R gtr

bass

string pa

strings 1

37

ride

kick

R gtr

bass

string pa

strings 1



41

ride

kick

R gtr

bass

string pa

strings 1

45 $\text{♩} = 66,000069 \text{ } \text{♩} = 81,000084$

vox

ride

kick

R gtr

bass

$\text{♩} = 66,000069 \text{ } \text{♩} = 81,000084$

string pa

strings 1

strings 2



48 $\text{♩} = 79,000381 \text{ } \text{♩} = 76,000250 \text{ } \text{♩} = 67,000175$

vox

ride

kick

R gtr

bass

$\text{♩} = 79,000381 \text{ } \text{♩} = 76,000250 \text{ } \text{♩} = 67,000175$

string pa

strings 1

strings 2

Unknown - WELCOME TO MY WORLD

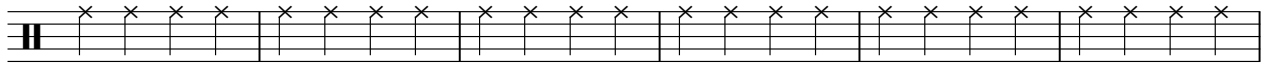
ride

♩ = 81,000084

3



9



15



21



26



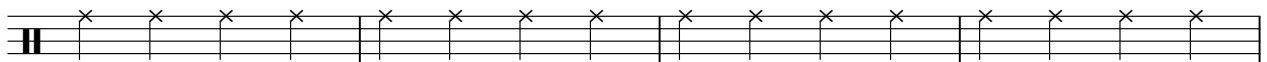
30



36

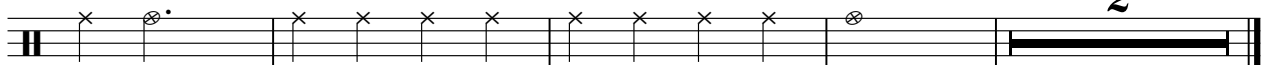


42



46

♩ = 66,000069 = 81,000084 ♩ = 79,000080 ♩ = 72,000079 ♩ = 12,000175



Unknown - WELCOME TO MY WORLD

kick

♩ = 81,000084

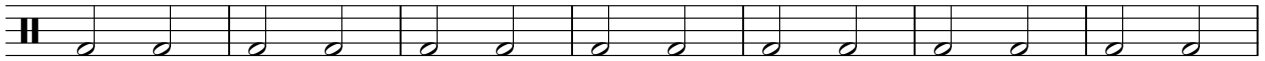
3



10



17



24

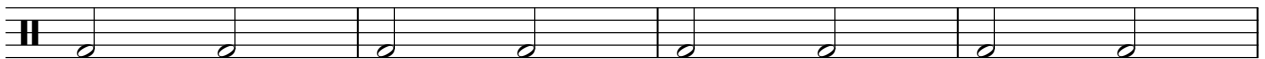
6



35



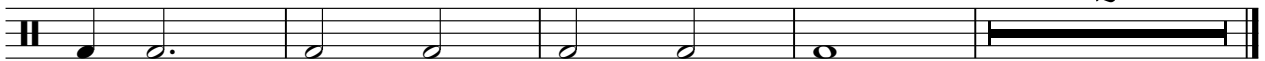
42



46

♩ = 66,000069 = 81,000084 ♩ = 79,000380 ♩ = 172,000290

2



Unknown - WELCOME TO MY WORLD

gtr 1

♩ = 81,000084

Sequenced by Chris.Hankins.

Musical notation for guitar 1, measures 1-11. Measure 1 is a whole rest with a '7' above it. Measures 2-11 contain various chords and melodic lines.

Musical notation for guitar 1, measures 12-15. Measure 12 starts with a '12' above it. Measures 13-15 contain various chords and melodic lines, including a triplet in measure 15.

Musical notation for guitar 1, measures 16-19. Measure 16 starts with a '16' above it. Measures 17-19 contain whole rests with '30' above measure 17 and '4' above measure 19. Above the staff are tempo markings: ♩ = 66,000084, ♩ = 70,000084, and ♩ = 72,000084.

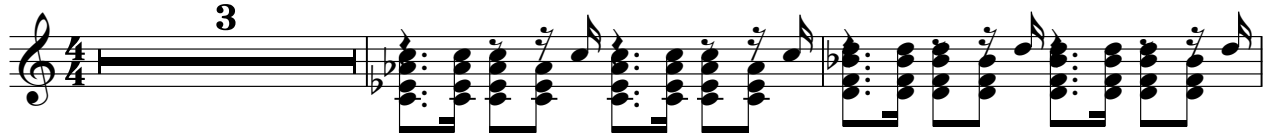
Unknown - WELCOME TO MY WORLD

R gtr

♩ = 81,000084

chris@daisydots.freemove.co.uk

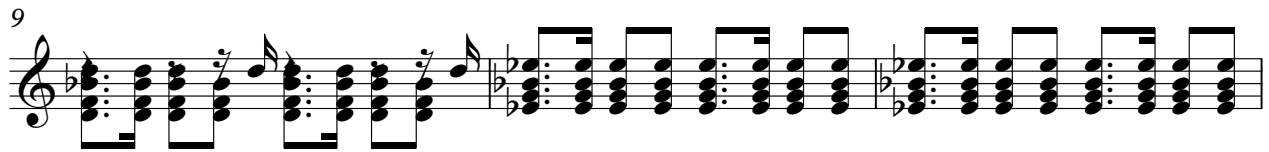
3



6



9



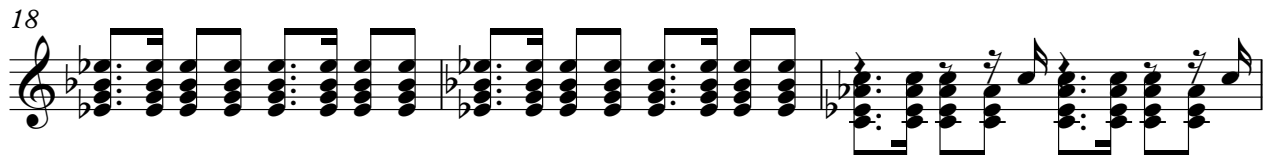
12



15



18



21



6

30

33

36

39

42

45

♩ = 66,000069

47

♩ = 81,000084 ♩ = 79,000381 ♩ = 76,000060 ♩ = 67,000175

2

Unknown - WELCOME TO MY WORLD

string pa

♩ = 81,000084

3

11

19

27

35

43

♩ = 66,000069 = 81,000084 = 81,000084 = 81,000084

2

The image displays a musical score for a string part, likely for a piano or guitar. It consists of six staves of music, each starting with a treble clef and a 4/4 time signature. The first staff begins with a tempo marking of a quarter note equal to 81,000084 and a triplet of eighth notes. The second staff is marked with the number 11. The third staff is marked with 19. The fourth staff is marked with 27. The fifth staff is marked with 35. The sixth staff is marked with 43 and contains a tempo change to a quarter note equal to 66,000069, which is also equal to 81,000084. The score concludes with a double bar line and a fermata, with a '2' written above it. The music features complex chordal textures with many accidentals (flats and naturals) and various articulations like slurs and ties.

Unknown - WELCOME TO MY WORLD

strings 1

Musical score for strings 1, measures 1-46. The score is written in bass clef with a 4/4 time signature. It includes various musical notations such as notes, rests, slurs, and dynamic markings. Measure numbers 5, 10, 19, 28, 33, 39, and 46 are indicated. The tempo is marked as $\text{♩} = 81,000084$ at the beginning and $\text{♩} = 76,000351$, $\text{♩} = 79,000381$, $\text{♩} = 67,000175$, $\text{♩} = 72,000290$, and $\text{♩} = 66,000069$ at various points. The score features complex rhythmic patterns and melodic lines.

Unknown - WELCOME TO MY WORLD

strings 2

♩ = 81,000084

2

8

8

2

21

2

29

13

♩ = 66,000084 = 79,76000075

46

46