

Uschi Bauer - La Pastorella 2

♩ = 108,001083

MELODY

DRUMS

STEEL GTR

SITAR

ACOU BASS

CHOIR AAHS

ACCORDION

♩ = 108,001083

SLOWSTRING

6

MELODY

DRUMS

STEEL GTR

SITAR

ACOU BASS

CHOIR AAHS

SLOWSTRING

10

MELODY

DRUMS

STEEL GTR

ACOU BASS

CHOIR AAHS

SLOWSTRING



13

MELODY

DRUMS

STEEL GTR

ACOU BASS

CHOIR AAHS

SLOWSTRING

16

MELODY

DRUMS

STEEL GTR

ACOU BASS

CHOIR AAHS

SLOWSTRING



19

MELODY

DRUMS

STEEL GTR

ACOU BASS

CHOIR AAHS

SLOWSTRING

22

MELODY

DRUMS

STEEL GTR

ACOU BASS

CHOIR AAHS

SLOWSTRING



25

MELODY

DRUMS

STEEL GTR

ACOU BASS

CHOIR AAHS

SLOWSTRING

28

MELODY

DRUMS

STEEL GTR

ACOU BASS

CHOIR AAHS

SLOWSTRING



31

MELODY

DRUMS

STEEL GTR

ACOU BASS

CHOIR AAHS

SLOWSTRING

34

MELODY

DRUMS

STEEL GTR

ACOU BASS

CHOIR AAHS

SLOWSTRING



37

MELODY

DRUMS

STEEL GTR

ACOU BASS

CHOIR AAHS

SLOWSTRING

40

MELODY

DRUMS

STEEL GTR

ACOU BASS

CHOIR AAHS

SLOWSTRING



43

MELODY

DRUMS

STEEL GTR

ACOU BASS

CHOIR AAHS

SLOWSTRING

46

MELODY

DRUMS

STEEL GTR

ACOU BASS

CHOIR AAHS

SLOWSTRING



49

MELODY

DRUMS

STEEL GTR

ACOU BASS

CHOIR AAHS

SLOWSTRING

60

DRUMS

STEEL GTR

ACOU BASS

CHOIR AAHS

ACCORDION

SLOWSTRING

Detailed description: This system of music covers measures 60, 61, and 62. The drums part features a consistent pattern of eighth notes on the snare and bass drum. The steel guitar plays a melodic line with a mix of eighth and sixteenth notes, including a flat sign in the first measure. The acoustic bass line consists of quarter and eighth notes. The choir part has a few notes, including a half note with a flat. The accordion part has a few notes, including a half note with a flat. The slow string part features a complex arrangement of notes, including a half note with a flat and a whole note with a flat.



63

DRUMS

STEEL GTR

ACOU BASS

CHOIR AAHS

ACCORDION

SLOWSTRING

Detailed description: This system of music covers measures 63, 64, and 65. The drums part continues with the same pattern of eighth notes. The steel guitar part continues with a similar melodic line. The acoustic bass line continues with quarter and eighth notes. The choir part has a few notes, including a half note with a flat. The accordion part has a few notes, including a half note with a flat. The slow string part features a complex arrangement of notes, including a half note with a flat and a whole note with a flat.

66

MELODY

DRUMS

STEEL GTR

ACOU BASS

CHOIR AAHS

ACCORDION

SLOWSTRING



70

MELODY

DRUMS

STEEL GTR

ACOU BASS

CHOIR AAHS

SLOWSTRING

73

MELODY

DRUMS

STEEL GTR

ACOU BASS

CHOIR AAHS

SLOWSTRING



77

MELODY

DRUMS

STEEL GTR

ACOU BASS

CHOIR AAHS

SLOWSTRING

81

MELODY

DRUMS

STEEL GTR

ACOU BASS

CHOIR AAHS

SLOWSTRING

Detailed description: This block contains the musical score for measures 81, 82, and 83. It features six staves: MELODY (treble clef), DRUMS (drum set notation), STEEL GTR (treble clef), ACOU BASS (bass clef), CHOIR AAHS (treble clef), and SLOWSTRING (treble clef). The MELODY staff shows a sequence of notes: G4, F4, E4, D4, C4, B3, A3, G3. The DRUMS staff shows a consistent rhythmic pattern of eighth notes. The STEEL GTR staff features a melodic line with various accidentals and slurs. The ACOU BASS staff provides a steady bass line. The CHOIR AAHS staff consists of block chords. The SLOWSTRING staff has a sparse accompaniment with long notes.



84

MELODY

DRUMS

STEEL GTR

ACOU BASS

CHOIR AAHS

SLOWSTRING

Detailed description: This block contains the musical score for measures 84, 85, and 86. It features six staves: MELODY (treble clef), DRUMS (drum set notation), STEEL GTR (treble clef), ACOU BASS (bass clef), CHOIR AAHS (treble clef), and SLOWSTRING (treble clef). The MELODY staff shows notes: G4, F4, E4, D4, C4, B3, A3, G3. The DRUMS staff continues the rhythmic pattern. The STEEL GTR staff has a melodic line with slurs and accents. The ACOU BASS staff has a steady bass line. The CHOIR AAHS staff consists of block chords. The SLOWSTRING staff has a sparse accompaniment with long notes.

87

MELODY
DRUMS
STEEL GTR
ACOU BASS
CHOIR AAHS
SLOWSTRING

Detailed description: This musical score covers measures 87 to 90. The MELODY part features a series of notes with a long slur over measures 88 and 89. The DRUMS part shows a consistent rhythmic pattern with 'x' marks indicating cymbal hits. The STEEL GTR part has a complex, rhythmic melody with many slurs and ties. The ACOU BASS part provides a steady bass line. The CHOIR AAHS part consists of sustained chords and notes. The SLOWSTRING part features long, sustained chords with a long slur across measures 88 and 89.



90

MELODY
DRUMS
STEEL GTR
ACOU BASS
CHOIR AAHS
ACCORDION
SLOWSTRING

Detailed description: This musical score covers measures 90 to 93. The MELODY part continues with notes and a slur. The DRUMS part maintains its rhythmic pattern. The STEEL GTR part has a melodic line with some flat accidentals. The ACOU BASS part continues its bass line. The CHOIR AAHS part has sustained chords and notes. The ACCORDION part is mostly silent with some notes at the end. The SLOWSTRING part has long, sustained chords with a long slur across measures 91 and 92.

93

DRUMS

STEEL GTR

ACOU BASS

CHOIR AAHS

ACCORDION

SLOWSTRING



96

MELODY

DRUMS

STEEL GTR

ACOU BASS

CHOIR AAHS

ACCORDION

SLOWSTRING

99

MELODY

DRUMS

STEEL GTR

SITAR

ACOU BASS

CHOIR AAHS

ACCORDION

SLOWSTRING

Uschi Bauer - La Pastorella 2

MELODY

♩ = 108,001083

5

11

17

22

28

34

40

46

51

14

MELODY

68

DRUMS

Uschi Bauer - La Pastorella 2

♩ = 108,001083

2

8

12

16

20

24

28

32

36

40

V.S.

44

44

48

48

52

52

58

58

62

62

66

66

70

70

74

74

78

78

82

82

DRUMS

86

90

94

98

♩ = 108,001083

2

8

11

14

17

20

23

26

29

32

V.S.

STEEL GTR

35

38

41

44

47

50

54

59

62

65



V.S.

98

The musical notation consists of a single staff with a treble clef. It begins with a measure containing a quarter rest, followed by a series of eighth and sixteenth notes, some beamed together. There are accidentals (flats and sharps) above some notes. The piece ends with a double bar line.

♩ = 108,001083

5

10

16

22

29

35

41

47

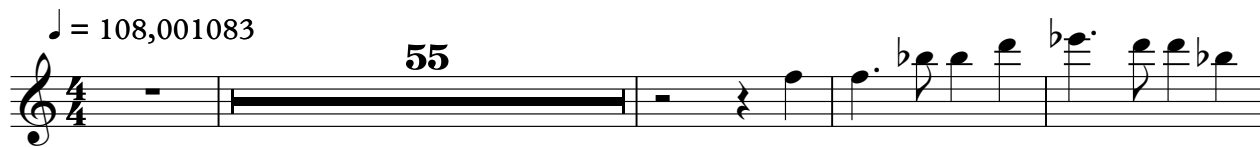
50

4

ACCORDION

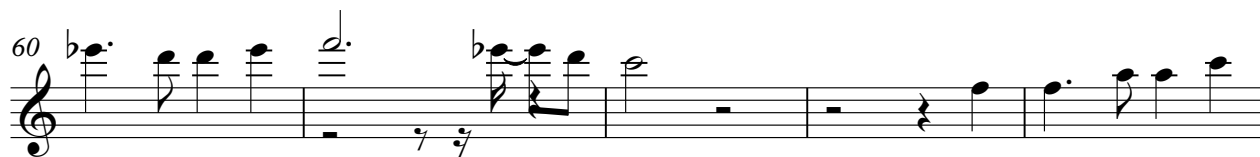
Uschi Bauer - La Pastorella 2

♩ = 108,001083



55

60

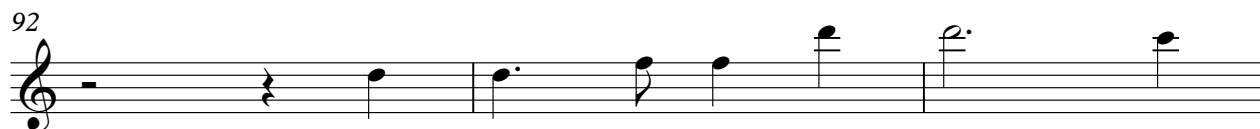


65

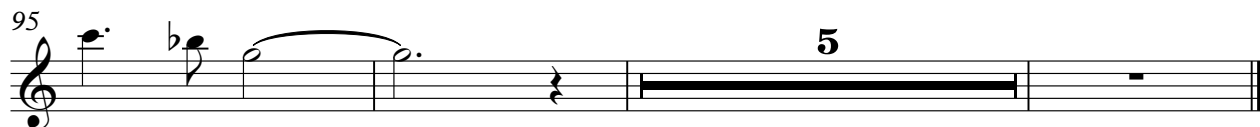


23

92



95



5

SLOWSTRING

Uschi Bauer - La Pastorella 2

♩ = 108,001083

6

11

16

21

26

32

38

43

47

51

3

57



61



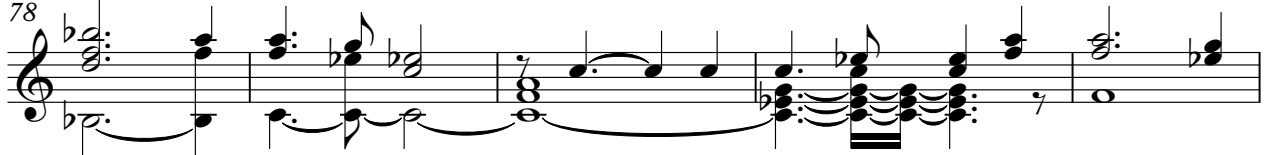
66



72



78



83



89



95



98

