

Vince Gill - Pocket Full Of Gold

♩ = 85,000046

Vocals
Drums
Steel Guitar
Shamisen
Bass
Bass 2
Piano

♩ = 85,000046

Detailed description: This system contains the first five measures of the score. The tempo is marked as ♩ = 85,000046. The time signature is 3/4. The Vocals part begins with a rest in measure 1, followed by a melodic line in measures 2-4. The Drums part has a steady pattern of eighth notes with 'x' marks. The Steel Guitar and Shamisen parts play a rhythmic accompaniment of eighth-note chords. The Bass part has a simple line with a flat. The Bass 2 part has a more complex accompaniment with a flat. The Piano part has a simple line with a flat.



Vocals
Drums
Steel Guitar
Shamisen
Bass
Bass 2
Piano

Detailed description: This system contains measures 6-10. Measure 6 is marked with a '6'. The Vocals part has a triplet in measure 6 and another in measure 10. The Drums part continues with the same pattern. The Steel Guitar and Shamisen parts continue with their accompaniment. The Bass part has a simple line with a flat. The Bass 2 part continues with its accompaniment. The Piano part has a triplet in measure 8 and another in measure 10.

11

Vocals
Drums
Steel Guitar
Shamisen
Bass
Bass 2
Piano

Detailed description: This system contains measures 11 through 16. The Vocals part features a melodic line starting with a quarter note, followed by a half note, and then a quarter rest. The Drums part has a consistent pattern of eighth notes with 'x' marks above them. The Steel Guitar and Shamisen parts play a complex, rhythmic accompaniment with many beamed notes. The Bass part has a simple line with a few notes and rests. The Bass 2 part provides a harmonic accompaniment with chords. The Piano part has a few notes and rests.



17

Vocals
Drums
Steel Guitar
Shamisen
Bass
Bass 2
Backup Vocals
Piano

Detailed description: This system contains measures 17 through 22. The Vocals part has a melodic line with a few notes and rests. The Drums part continues with its eighth-note pattern. The Steel Guitar and Shamisen parts play a complex, rhythmic accompaniment. The Bass part has a simple line with a few notes and rests. The Bass 2 part provides a harmonic accompaniment with chords. The Backup Vocals part has a few notes and rests. The Piano part has a few notes and rests.

23

Vocals

Drums

Steel Guitar

Shamisen

Bass

Bass 2

Backup Vocals

Piano



29

Vocals

Drums

Steel Guitar

Shamisen

Bass

Bass 2

Piano

35

Vocals
Drums
Steel Guitar
Shamisen
Bass
Bass 2
Piano

Detailed description: This musical score covers measures 35 to 40. The Vocals part begins with a melodic line in measure 35, featuring a triplet of eighth notes in measure 38. The Drums part provides a steady rhythmic accompaniment with a pattern of eighth notes and x's. The Steel Guitar and Shamisen parts play a complex, rhythmic accompaniment consisting of eighth-note chords. The Bass and Bass 2 parts provide a low-frequency accompaniment with a mix of single notes and chords. The Piano part has a sparse melody with a triplet of eighth notes in measure 35 and a final note in measure 40.



41

Vocals
Drums
Steel Guitar
Shamisen
Bass
Bass 2
Piano

Detailed description: This musical score covers measures 41 to 46. The Vocals part has a melodic line starting in measure 41, with a triplet of eighth notes in measure 42. The Drums part continues with the same rhythmic pattern. The Steel Guitar and Shamisen parts play a complex, rhythmic accompaniment of eighth-note chords. The Bass and Bass 2 parts provide a low-frequency accompaniment with a mix of single notes and chords. The Piano part features a triplet of eighth notes in measure 41, followed by a melodic line in measure 42, and a final chord in measure 46.

46

Vocals

Drums

Steel Guitar

Shamisen

Bass

Bass 2

Piano

Detailed description: This system contains measures 46 through 50. The Vocals part features a melodic line starting with a quarter rest, followed by eighth and quarter notes. The Drums part has a steady eighth-note pattern with occasional 'x' marks. The Steel Guitar and Shamisen parts play a complex, rhythmic accompaniment with many beamed notes. The Bass and Bass 2 parts provide a low-frequency accompaniment with some chordal textures. The Piano part is mostly silent, with some chords appearing in the later measures.



51

Vocals

Drums

Steel Guitar

Shamisen

Bass

Bass 2

Backup Vocals

Piano

Detailed description: This system contains measures 51 through 55. The Vocals part continues with a melodic line, including some longer notes. The Drums part maintains its eighth-note pattern. The Steel Guitar and Shamisen parts continue their intricate accompaniment. The Bass and Bass 2 parts provide accompaniment with some chordal textures. The Backup Vocals part has a line with some notes and rests. The Piano part has some chords and melodic fragments.

57

Vocals
Drums
Steel Guitar
Shamisen
Bass
Bass 2
Piano

3

Detailed description: This musical score covers measures 57 to 62. The Vocals part begins with a rest, followed by a melodic line with a triplet of eighth notes at the end. The Drums part features a steady pattern of eighth notes with 'x' marks indicating cymbal hits. The Steel Guitar and Shamisen parts play a complex, rhythmic accompaniment with many beamed notes. The Bass part has a simple line with a few notes, and Bass 2 provides a harmonic accompaniment with chords. The Piano part has a few chords and a triplet of eighth notes at the end of the section.



63

Vocals
Drums
Steel Guitar
Shamisen
Bass
Bass 2
Piano

3

Detailed description: This musical score covers measures 63 to 68. The Vocals part starts with a melodic line, including a triplet of eighth notes, and ends with a rest. The Drums part continues with the eighth-note pattern, adding some sixteenth-note patterns towards the end. The Steel Guitar and Shamisen parts maintain their complex accompaniment. The Bass part has a few notes, and Bass 2 provides a harmonic accompaniment. The Piano part has a few chords and a melodic line.

68

Vocals

Drums

Steel Guitar

Shamisen

Bass

Bass 2



73

Vocals

Drums

Steel Guitar

Shamisen

Bass

Bass 2

Piano

78

Vocals

Drums

Steel Guitar

Shamisen

Bass

Bass 2

Piano



83

Vocals

Drums

Steel Guitar

Shamisen

Bass

Bass 2

Piano

89

Vocals

Drums

Steel Guitar

Shamisen

Bass

Bass 2

Piano



94

Vocals

Drums

Steel Guitar

Shamisen

Bass

Bass 2

Piano

99

Vocals

Drums

Steel Guitar

Shamisen

Bass

Bass 2

Piano



104

$\text{♩} = 73,999985$ $\text{♩} = 62,999996$ $\text{♩} = 35,000026$

Vocals

Drums

Steel Guitar

Shamisen

Bass

Bass 2

Piano

$\text{♩} = 73,999985$ $\text{♩} = 62,999996$ $\text{♩} = 35,000026$

Vince Gill - Pocket Full Of Gold

Vocals

♩ = 85,000046

8

16

26

33

41

49

57

62

67

73

79

86

94

101

106

$\text{♩} = 73,999985 \text{ ♩} = 62,999996 \text{ ♩} = 53,000023 \text{ ♩} = 85,000046$

Vince Gill - Pocket Full Of Gold

Drums

♩ = 85,000046

2

9

16

22

29

36

43

50

56

63

V.S.

69

Musical notation for measure 69, featuring a series of eighth notes with accents (x) on a single staff.

76

Musical notation for measure 76, featuring a series of eighth notes with accents (x) on a single staff.

83

Musical notation for measure 83, featuring a series of eighth notes with accents (x) and some notes with stems pointing downwards, on a single staff.

90

Musical notation for measure 90, featuring a series of eighth notes with accents (x) on a single staff.

97

Musical notation for measure 97, featuring a series of eighth notes with accents (x) and some notes with stems pointing downwards, on a single staff.

103

♩ = 73,999985 ♪ = 62,999992 ♫ = 85,000046

Musical notation for measure 103, featuring a series of eighth notes with accents (x) and some notes with stems pointing downwards, on a single staff.

Vince Gill - Pocket Full Of Gold

Steel Guitar

♩ = 85,000046

3

8

13

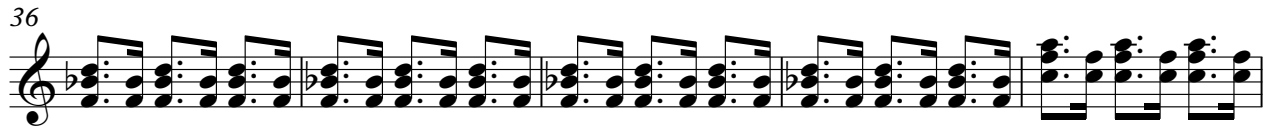
18

23

28

32

36



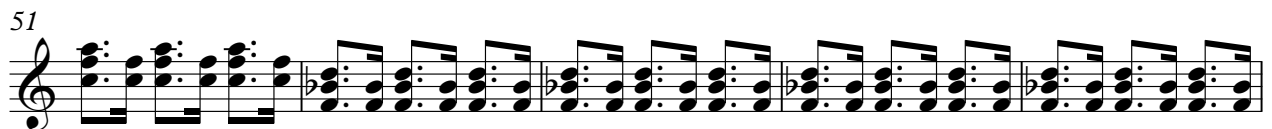
41



46



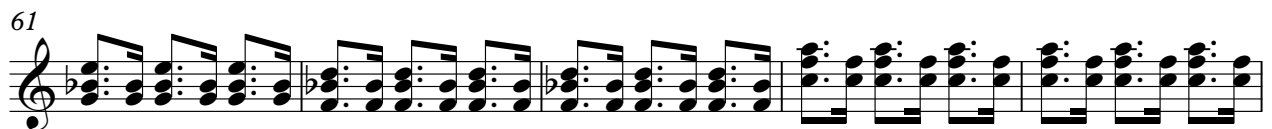
51



56



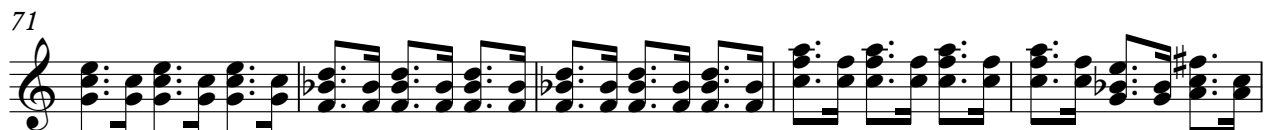
61



66



71



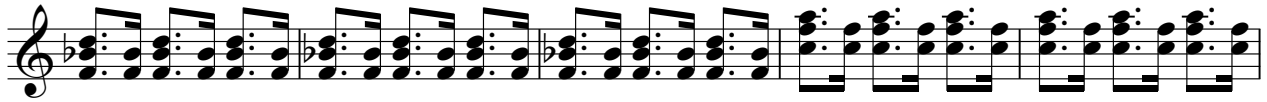
76



81



87



92



97



102



106



Vince Gill - Pocket Full Of Gold

Shamisen

♩ = 85,000046

3

8

13

18

23

28

32

Detailed description: This musical score is for a Shamisen piece in 3/4 time. It begins with a tempo marking of a quarter note equal to 85,000046. The first staff contains a triplet of three eighth notes, followed by four measures of a rhythmic pattern of eighth notes. The second staff starts at measure 8 and continues the eighth-note pattern. The third staff starts at measure 13 and continues the pattern. The fourth staff starts at measure 18 and continues the pattern. The fifth staff starts at measure 23 and continues the pattern. The sixth staff starts at measure 28 and continues the pattern. The seventh staff starts at measure 32 and concludes with a final chord and a whole rest.

87

92

97

102

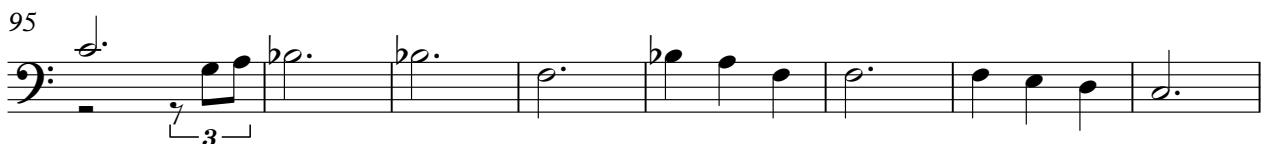
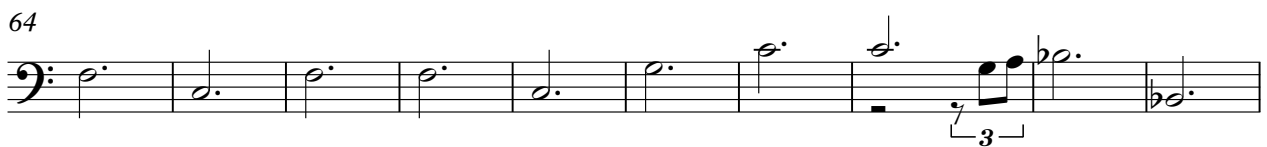
106

♪ = 73,999985 ♪ = 62,999996 ♪ = 53,000023 ♪ = 85,000046

Vince Gill - Pocket Full Of Gold

Bass

♩ = 85,000046



V.S.

2

Bass

103

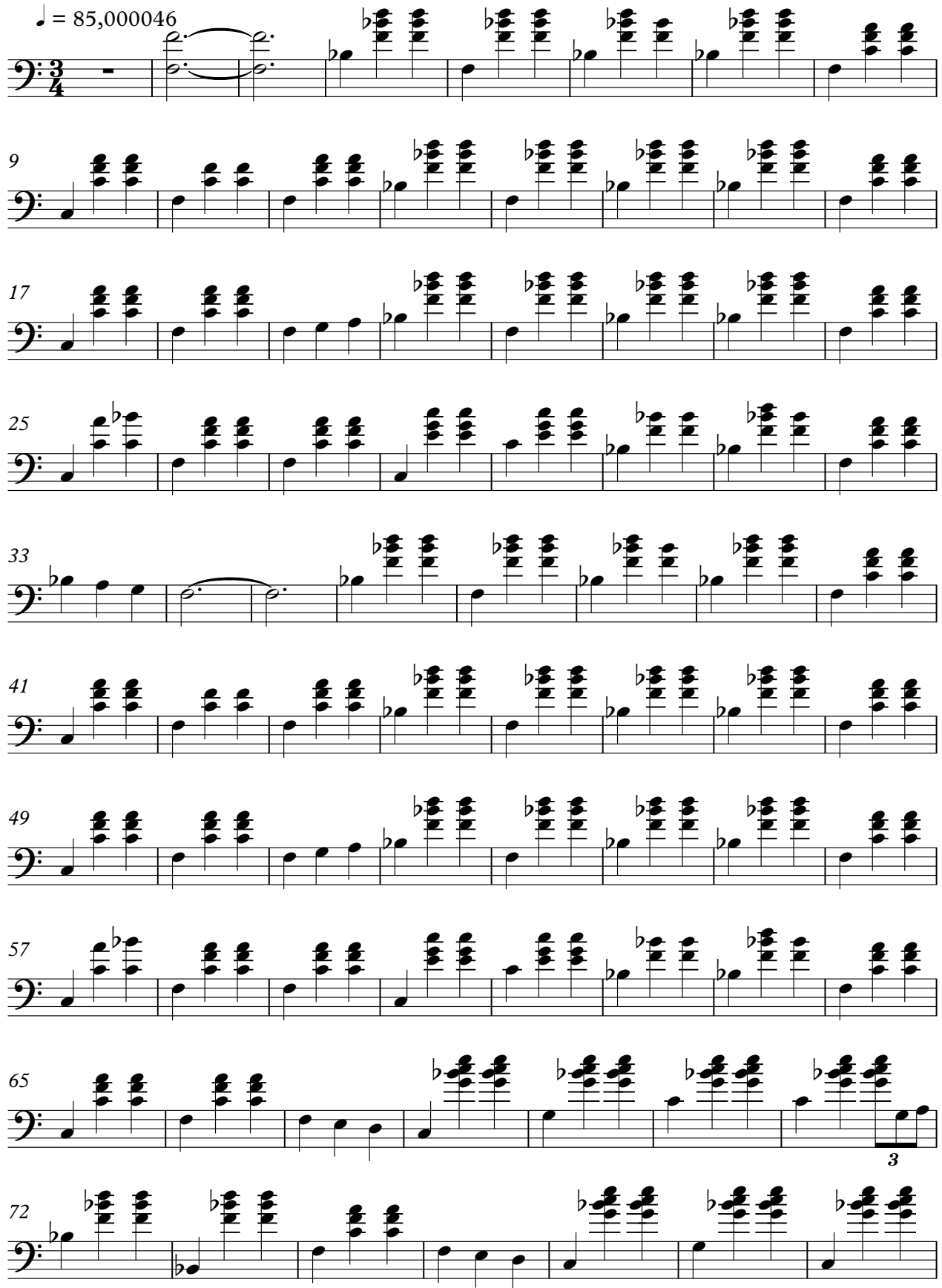
$\text{♩} = 73,999985$ $\text{♩} = 62,999996$ $\text{♩} = 53,85,002046$

Musical notation for Bass, measure 103. The staff shows a sequence of notes: a dotted quarter note, an eighth note triplet, two dotted quarter notes, a quarter note, a dotted quarter note, an eighth note triplet, a quarter note, a dotted quarter note, and a quarter note. A slur covers the last three notes. The piece ends with a double bar line.

Vince Gill - Pocket Full Of Gold

Bass 2

♩ = 85,000046



9

17

25

33

41

49

57

65

72

3

V.S.

2

79 Bass 2

3

87

95

102

106

♩ = 73,999985 ♩ = 62,999996 ♩ = 53,000023 ♩ = 85,000046

Backup Vocals

Vince Gill - Pocket Full Of Gold

♩ = 85,000046

18

18

25

26

26

56

50

♩ = 73,999985 ♩ = 62,99996 ♩ = 85,000046

56

Vince Gill - Pocket Full Of Gold

Piano

♩ = 85,000046

9

17

27

37

45

56

65

79

86

2

Piano

99

Musical notation for measures 99 and 100. Measure 99 contains four chords: a triad of G4, B4, D5; a triad of G4, B4, D5 with a flat sign; a triad of G4, B4, D5; and a triad of G4, B4, D5. Measure 100 contains a triad of G4, B4, D5, followed by a triad of G4, B4, D5 with a flat sign, and a triad of G4, B4, D5. A fermata is placed over the final triad. A thick black bar is drawn across the staff for the remainder of the measure, with a '3' above it.

106

♩ = 73,999985

♩ = 62,999996

♩ = 53,000023

♩ = 85,000046

Musical notation for measures 106 and 107. Measure 106 starts with a whole rest, followed by a triplet of eighth notes (G4, A4, B4), then a triad of G4, B4, D5, and another triad of G4, B4, D5. Measure 107 contains a triad of G4, B4, D5 with a flat sign, followed by a triad of G4, B4, D5, and a triad of G4, B4, D5 with a flat sign. A fermata is placed over the final triad.