

Whiteroom - bren

♩ = 138,000198

Melody

Bass

Bass

3

Melody

Bass

Bass

5

Melody

Bass

Bass

7

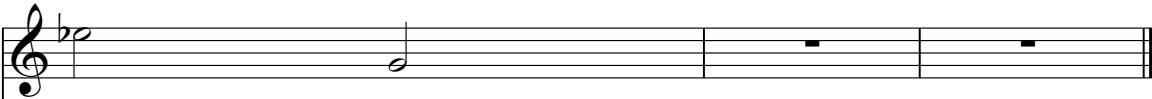
Melody

Bass

Bass

Melody

8



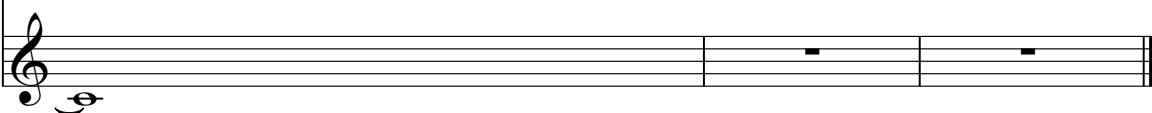
A musical staff in treble clef with a key signature of one flat (Bb). It contains a single half note on the second line (D4) in the first measure, followed by two measures of whole rests.

Bass



A musical staff in treble clef. The first measure contains a sequence of eighth notes: G3, F3, E3, D3, C3, B2, A2, G2, each preceded by a slash and a vertical line (representing a sixteenth note). The following two measures contain whole rests.

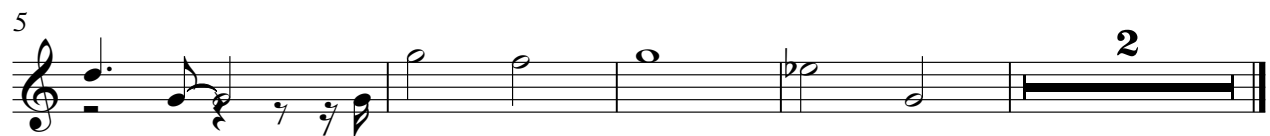
Bass



A musical staff in treble clef. The first measure contains a whole note on the second line (D4). The following two measures contain whole rests.

Melody

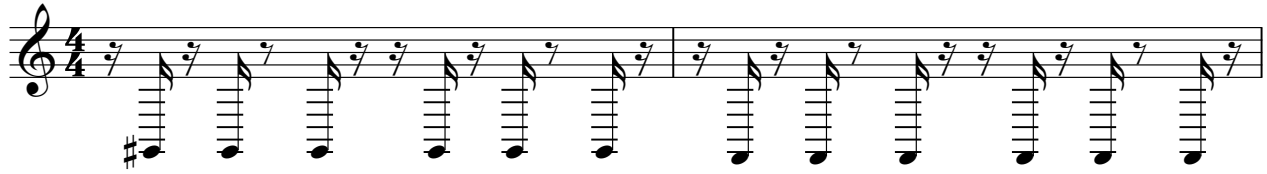
Whiteroom - bren



Bass

Whiteroom - bren

♩ = 138,000198



Bass

