

Wolfgang Amadeus Mozart - Divertimento in F KV138 Allegro

11

♩ = 125,000000

Violin

Violin

Viola

Cello

5

Violin

Violin

Viola

Cello

8

Violin

Violin

Viola

Cello

Divertimento in F

11

Violin

Violin

Viola

Cello

Detailed description: This system contains measures 11, 12, and 13. Measure 11 starts with a treble clef and a key signature of one flat. The first violin has a melodic line with eighth notes and a dotted quarter note. The second violin has a similar line. The viola has a bass line with eighth notes. The cello has a steady eighth-note accompaniment. Measure 12 features a whole rest in the first violin and a quarter rest in the second violin. Measure 13 continues the melodic and accompanimental patterns.

14

Violin

Violin

Viola

Cello

Detailed description: This system contains measures 14, 15, and 16. Measure 14 begins with a treble clef and a key signature of one flat. The first violin has a melodic line with eighth notes and a dotted quarter note. The second violin has a similar line. The viola has a bass line with eighth notes. The cello has a steady eighth-note accompaniment. Measure 15 features a whole rest in the first violin and a quarter rest in the second violin. Measure 16 continues the melodic and accompanimental patterns.

17

Violin

Violin

Viola

Cello

Detailed description: This system contains measures 17, 18, and 19. Measure 17 starts with a treble clef and a key signature of one sharp. The first violin has a melodic line with eighth notes and a dotted quarter note. The second violin has a similar line. The viola has a bass line with eighth notes. The cello has a steady eighth-note accompaniment. Measure 18 features a whole rest in the first violin and a quarter rest in the second violin. Measure 19 continues the melodic and accompanimental patterns.

20

Violin

Violin

Viola

Cello

23

Violin

Violin

Viola

Cello

26

Violin

Violin

Viola

Cello

30

Violin

Violin

Viola

Cello

This system contains measures 30 through 33. The first violin part features a melodic line with eighth and sixteenth notes. The second violin part provides harmonic support with a similar rhythmic pattern. The viola part plays a steady eighth-note accompaniment. The cello part has a more sparse texture, with notes and rests.

34

Violin

Violin

Viola

Cello

This system contains measures 34 through 37. The first violin part continues its melodic line. The second violin part has a more active role with eighth-note patterns. The viola part maintains its eighth-note accompaniment. The cello part has a consistent eighth-note accompaniment.

38

Violin

Violin

Viola

Cello

This system contains measures 38 through 41. The first violin part features a melodic line with a long note in measure 39. The second violin part has a steady eighth-note accompaniment. The viola part continues with its eighth-note accompaniment. The cello part has a consistent eighth-note accompaniment.

41

Violin

Violin

Viola

Cello

This system contains measures 41, 42, and 43. The first violin part begins with a treble clef and a key signature of one flat (B-flat). It features a melodic line with eighth and sixteenth notes, including a triplet in measure 43. The second violin part has a treble clef and a key signature of one sharp (F#), playing a rhythmic accompaniment. The viola part has an alto clef and a key signature of one sharp (F#), with a melodic line. The cello part has a bass clef and a key signature of one sharp (F#), playing a rhythmic accompaniment.

44

Violin

Violin

Viola

Cello

This system contains measures 44, 45, and 46. The first violin part has a treble clef and a key signature of one flat (B-flat), with a melodic line and a fermata in measure 45. The second violin part has a treble clef and a key signature of one sharp (F#), with a rhythmic accompaniment. The viola part has an alto clef and a key signature of one sharp (F#), with a melodic line. The cello part has a bass clef and a key signature of one sharp (F#), with a rhythmic accompaniment.

47

Violin

Violin

Viola

Cello

This system contains measures 47, 48, and 49. The first violin part has a treble clef and a key signature of one flat (B-flat), with a melodic line and a fermata in measure 47. The second violin part has a treble clef and a key signature of one sharp (F#), with a rhythmic accompaniment. The viola part has an alto clef and a key signature of one sharp (F#), with a melodic line. The cello part has a bass clef and a key signature of one sharp (F#), with a rhythmic accompaniment.

50

Violin

Violin

Viola

Cello

53

Violin

Violin

Viola

Cello

57

Violin

Violin

Viola

Cello

60

Violin

Violin

Viola

Cello

Detailed description: This system contains measures 60, 61, and 62. Measure 60 features a first violin part with a half note G4, a quarter note A4, a quarter note B4, and a half note C5. The second violin part has a quarter rest, followed by eighth notes G4, A4, B4, and C5. The viola and cello parts play a steady eighth-note accompaniment starting on B3. Measure 61 continues the accompaniment with a half note G4 in the first violin. Measure 62 shows the first violin playing a half note G4, followed by a sixteenth-note run: A4, B4, C5, B4, A4, G4. The second violin has a quarter rest, followed by eighth notes G4, A4, B4, and C5. The viola and cello parts continue their accompaniment.

63

Violin

Violin

Viola

Cello

Detailed description: This system contains measures 63, 64, and 65. Measure 63 features a first violin part with a half note G4, followed by a sixteenth-note run: A4, B4, C5, B4, A4, G4. The second violin part has a quarter rest, followed by eighth notes G4, A4, B4, and C5. The viola and cello parts continue their accompaniment. Measure 64 shows the first violin playing a half note G4, followed by a sixteenth-note run: A4, B4, C5, B4, A4, G4. The second violin part has a quarter rest, followed by eighth notes G4, A4, B4, and C5. The viola and cello parts continue their accompaniment. Measure 65 shows the first violin playing a half note G4, followed by a sixteenth-note run: A4, B4, C5, B4, A4, G4. The second violin part has a quarter rest, followed by eighth notes G4, A4, B4, and C5. The viola and cello parts continue their accompaniment.

66

Violin

Violin

Viola

Cello

Detailed description: This system contains measures 66, 67, and 68. Measure 66 features a first violin part with a half note G4, followed by a sixteenth-note run: A4, B4, C5, B4, A4, G4. The second violin part has a quarter rest, followed by eighth notes G4, A4, B4, and C5. The viola and cello parts continue their accompaniment. Measure 67 shows the first violin playing a half note G4, followed by a sixteenth-note run: A4, B4, C5, B4, A4, G4. The second violin part has a quarter rest, followed by eighth notes G4, A4, B4, and C5. The viola and cello parts continue their accompaniment. Measure 68 shows the first violin playing a half note G4, followed by a sixteenth-note run: A4, B4, C5, B4, A4, G4. The second violin part has a quarter rest, followed by eighth notes G4, A4, B4, and C5. The viola and cello parts continue their accompaniment.

68

Violin

Violin

Viola

Cello

This system of music covers measures 68, 69, and 70. It features three staves: Violin (top), Viola (middle), and Cello (bottom). The Violin part has a melodic line with some grace notes and slurs. The Viola part provides harmonic support with a similar melodic contour. The Cello part plays a steady eighth-note accompaniment. The key signature has one flat (B-flat), and the time signature is 4/4.

71

Violin

Violin

Viola

Cello

This system of music covers measures 71, 72, and 73. It features three staves: Violin (top), Viola (middle), and Cello (bottom). The Violin part continues its melodic line with more grace notes. The Viola part has a more active role with some sixteenth-note passages. The Cello part maintains the eighth-note accompaniment. The key signature has one flat, and the time signature is 4/4.

74

Violin

Violin

Viola

Cello

This system of music covers measures 74, 75, and 76. It features three staves: Violin (top), Viola (middle), and Cello (bottom). The Violin part has a melodic line with a sharp sign (#) in measure 75. The Viola part has a more active role with some sixteenth-note passages. The Cello part maintains the eighth-note accompaniment. The key signature has one flat, and the time signature is 4/4.



77

Violin

Violin

Viola

Cello

This system contains measures 77, 78, and 79. The first violin part begins with a dotted quarter note followed by eighth notes. The second violin part has a whole rest in measure 77 and enters in measure 78. The viola and cello parts provide harmonic support with chords and moving lines.

80

Violin

Violin

Viola

Cello

This system contains measures 80, 81, and 82. Measures 80 and 81 feature rapid sixteenth-note passages in the violin and viola parts. The cello part has a whole rest in measure 80 and enters in measure 81.

83

Violin

Violin

Viola

Cello

This system contains measures 83, 84, 85, and 86. The first violin part has a melodic line with some rests. The second violin part continues with eighth-note patterns. The viola and cello parts provide a steady accompaniment.

87

Violin

Violin

Viola

Cello

Detailed description: This block contains the musical notation for measures 87 and 88. It features four staves: Violin (top), Violin (second), Viola (third), and Cello (bottom). The key signature has one flat (B-flat). Measure 87 shows rhythmic patterns with eighth and sixteenth notes, including a fermata over the final note. Measure 88 continues the patterns, with some notes marked with a fermata. The Cello part is more sparse, with fewer notes than the other instruments.

89

Violin

Violin

Viola

Cello

Detailed description: This block contains the musical notation for measures 89, 90, 91, and 92. It features four staves: Violin (top), Violin (second), Viola (third), and Cello (bottom). The key signature has one flat (B-flat). Measure 89 continues the rhythmic patterns from the previous block. Measure 90 shows a change in texture with some instruments playing chords or rests. Measures 91 and 92 are primarily rests for all instruments, indicating the end of a phrase or section.

Wolfgang Amadeus Mozart - Divertimento in F KV138 Allegro

Violin

♩ = 125,000000

6

11

15

19

23

26

31

35

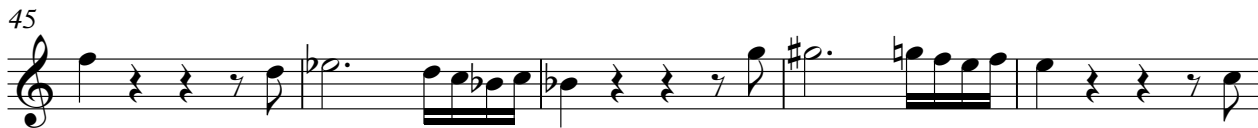
40

Divertimento in F

V.S.

Violin

45



50



55



60



64



68



72



77



80



84



Violin

88

2

Wolfgang Amadeus Mozart - Divertimento in F KV138 Allegro

Violin

♩ = 125,000000



Divertimento in F

V.S.



79



82



86



89





Wolfgang Amadeus Mozart - Divertimento in F KV138 Allegro

Viola

♩ = 125,000000

6

10

14

19

25

29

33

37

41

Divertimento in F

V.S.

45



49



53



58



62



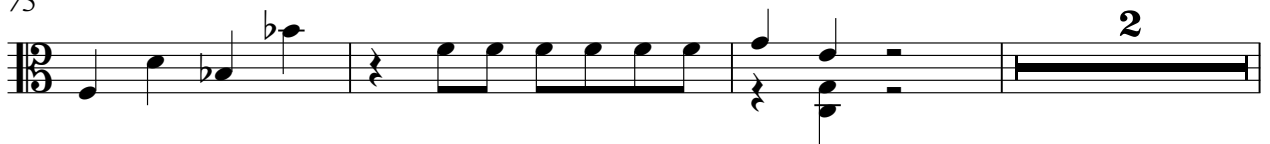
66



70



75



80



84



Viola

88

Musical notation for Viola, measure 88. The staff is in bass clef with a 3/8 time signature. The melody consists of eighth notes: G2, F2, E2, D2, C2, B1, A1, G1. A fermata is placed over the final G1 note. A measure rest is indicated by a '2' above the staff.

Wolfgang Amadeus Mozart - Divertimento in F KV138 Allegro

Cello

♩ = 125,000000

7

11

15

19

25

29

34

38

42

Divertimento in F

V.S.

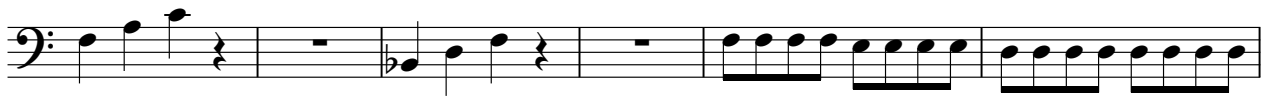
46



50



54



60



64



68



72



76



82



86

