

Wolfgang Amadeus Mozart - Wilhelm Tell Overture

♩ = 148,001968

BRASS 1

STRINGS

4

BRASS 1

STRINGS

6

BRASS 1

SLOWSTRING

STRINGS

8

BRASS 1

SLOWSTRING

STRINGS

10

BRASS 1

SLOWSTRING

STRINGS

This system contains measures 10 and 11. The Brass 1 part (top staff) plays a rhythmic pattern of eighth notes with stems pointing up. The Slowstring part (middle staff) plays a similar rhythmic pattern with stems pointing down. The Strings part (bottom staff) plays a rhythmic pattern of eighth notes with stems pointing down. The key signature has one flat (B-flat).

11

BRASS 1

SLOWSTRING

STRINGS

This system contains measures 11 and 12. The Brass 1 part (top staff) plays a rhythmic pattern of eighth notes with stems pointing up. The Slowstring part (middle staff) plays a rhythmic pattern with stems pointing down. The Strings part (bottom staff) plays a rhythmic pattern of eighth notes with stems pointing down. The key signature has one flat (B-flat).

12

BRASS 1

SLOWSTRING

STRINGS

This system contains measures 12 and 13. The Brass 1 part (top staff) plays a rhythmic pattern of eighth notes with stems pointing up. The Slowstring part (middle staff) plays a rhythmic pattern with stems pointing down. The Strings part (bottom staff) plays a rhythmic pattern of eighth notes with stems pointing down. The key signature has one flat (B-flat).

14

BRASS 1

SLOWSTRING

STRINGS

This system contains measures 14 and 15. The Brass 1 part (top staff) plays a rhythmic pattern of eighth notes with stems pointing up. The Slowstring part (middle staff) plays a rhythmic pattern with stems pointing down. The Strings part (bottom staff) plays a rhythmic pattern of eighth notes with stems pointing down. The key signature has one flat (B-flat).

15

BRASS 1

SLOWSTRING

STRINGS

16

BRASS 1

SLOWSTRING

STRINGS

18

BRASS 1

SLOWSTRING

STRINGS

20

BRASS 1

SLOWSTRING

STRINGS

22

BRASS 1

SLOWSTRING

STRINGS

24

BRASS 1

SLOWSTRING

STRINGS

25

BRASS 1

SLOWSTRING

STRINGS

26

BRASS 1

SLOWSTRING

STRINGS

27

BRASS 1

SLOWSTRING

STRINGS

Measures 27-28. BRASS 1: Treble clef, eighth notes. SLOWSTRING: Treble clef, eighth notes. STRINGS: Bass clef, eighth notes.

29

BRASS 1

SLOWSTRING

STRINGS

Measures 29-30. BRASS 1: Treble clef, eighth notes. SLOWSTRING: Treble clef, eighth notes. STRINGS: Bass clef, eighth notes.

31

BRASS 1

SLOWSTRING

STRINGS

Measures 31-32. BRASS 1: Treble clef, quarter notes. SLOWSTRING: Treble clef, eighth notes. STRINGS: Bass clef, eighth notes.

32

BRASS 1

SLOWSTRING

STRINGS

Measures 32-33. BRASS 1: Treble clef, eighth notes. SLOWSTRING: Treble clef, eighth notes. STRINGS: Bass clef, eighth notes.

34

BRASS 1

SLOWSTRING

STRINGS

This system contains measures 34 and 35. The Brass 1 part (treble clef) features a rhythmic pattern of eighth notes with stems pointing down, starting on G4 and moving up to A4. The Slowstring part (treble clef) has a similar rhythmic pattern, starting on G4 and moving up to A4. The Strings part (bass clef) provides a harmonic accompaniment with chords and moving lines.

35

BRASS 1

SLOWSTRING

STRINGS

This system contains measures 35 and 36. The Brass 1 part (treble clef) has a more complex rhythmic pattern with some notes beamed together. The Slowstring part (treble clef) continues with a similar rhythmic pattern, starting on G4 and moving up to A4. The Strings part (bass clef) provides a harmonic accompaniment with chords and moving lines.

36

BRASS 1

SLOWSTRING

STRINGS

This system contains measures 36 and 37. The Brass 1 part (treble clef) has a more complex rhythmic pattern with some notes beamed together. The Slowstring part (treble clef) continues with a similar rhythmic pattern, starting on G4 and moving up to A4. The Strings part (bass clef) provides a harmonic accompaniment with chords and moving lines.

37

BRASS 1

SLOWSTRING

STRINGS

This system contains measures 37 and 38. The Brass 1 part (treble clef) has a more complex rhythmic pattern with some notes beamed together. The Slowstring part (treble clef) continues with a similar rhythmic pattern, starting on G4 and moving up to A4. The Strings part (bass clef) provides a harmonic accompaniment with chords and moving lines.

38

BRASS 1

SLOWSTRING

STRINGS

40

BRASS 1

SLOWSTRING

STRINGS

41

BRASS 1

SLOWSTRING

STRINGS

42

BRASS 1

SLOWSTRING

STRINGS

44

BRASS 1

SLOWSTRING

STRINGS

46

BRASS 1

SLOWSTRING

STRINGS

48

BRASS 1

SLOWSTRING

STRINGS

50

BRASS 1

SLOWSTRING

STRINGS

52

BRASS 1

The BRASS 1 staff is written in treble clef. Measure 52 contains a dotted quarter note G4, followed by a quarter rest, a dotted quarter note G4, a quarter rest, a dotted quarter note G4, and a quarter rest. Measure 53 contains a dotted quarter note G4, a quarter rest, a dotted quarter note G4, a quarter rest, a dotted quarter note G4, and a quarter rest. Measure 54 contains a dotted quarter note G4, a quarter rest, a dotted quarter note G4, a quarter rest, a dotted quarter note G4, and a quarter rest. Measure 55 contains a dotted quarter note G4, a quarter rest, a dotted quarter note G4, a quarter rest, a dotted quarter note G4, and a quarter rest.

SLOWSTRING

The SLOWSTRING staff is written in treble clef. Measure 52 contains a dotted quarter note G4, followed by a quarter rest, a dotted quarter note G4, a quarter rest, a dotted quarter note G4, and a quarter rest. Measure 53 contains a dotted quarter note G4, a quarter rest, a dotted quarter note G4, a quarter rest, a dotted quarter note G4, and a quarter rest. Measure 54 contains a dotted quarter note G4, a quarter rest, a dotted quarter note G4, a quarter rest, a dotted quarter note G4, and a quarter rest. Measure 55 contains a dotted quarter note G4, a quarter rest, a dotted quarter note G4, a quarter rest, a dotted quarter note G4, and a quarter rest.

STRINGS

The STRINGS staff is written in bass clef. Measure 52 contains a dotted quarter note G2, followed by a quarter rest, a dotted quarter note G2, a quarter rest, a dotted quarter note G2, and a quarter rest. Measure 53 contains a dotted quarter note G2, a quarter rest, a dotted quarter note G2, a quarter rest, a dotted quarter note G2, and a quarter rest. Measure 54 contains a dotted quarter note G2, a quarter rest, a dotted quarter note G2, a quarter rest, a dotted quarter note G2, and a quarter rest. Measure 55 contains a dotted quarter note G2, a quarter rest, a dotted quarter note G2, a quarter rest, a dotted quarter note G2, and a quarter rest.

Wolfgang Amadeus Mozart - Wilhelm Tell Overture

BRASS 1

♩ = 148,001968

5

8

10

12

14

17

19

21

23

V.S.

25



28



30



32



34



37



40



43



46



49



51

Musical notation for Brass 1, measure 51. The notation is on a single staff with a treble clef. It begins with a dotted quarter note on G4, followed by an eighth note on A4, and then a series of eighth notes: B4, A4, G4, F4, E4, D4, C4, and B3. The final note is a whole note on B3. The staff ends with a double bar line.

SLOWSTRING

Wolfgang Amadeus Mozart - Wilhelm Tell Overture

$\text{♩} = 148,001968$

5

8

10

12

14

16

19

22

25

27

V.S.

SLOWSTRING

Musical score for SLOWSTRING, page 2, measures 29-51. The score is written in treble clef and consists of ten staves. The music is characterized by a dense, rhythmic texture with frequent sixteenth-note patterns and complex chordal structures. The notation includes many beamed notes, often with stems pointing downwards, and frequent use of slurs and ties. The piece concludes with a final measure containing a whole note chord.

STRINGS

Wolfgang Amadeus Mozart - Wilhelm Tell Overture

♩ = 148,001968

5

8

10

13

15

17

19

21

23

V.S.

26



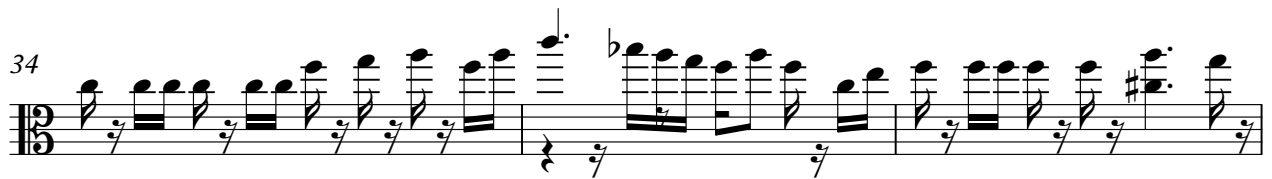
29



32



34



37



39



42



44



47



50



