

Xmas Carol - Silent Night

Melodie

Oboe

Synth Strings

Viola

Solo

Telephone



Melodie

Ob.

A.

Vla.

Solo



Melodie

Ob.

A.

Solo

41 $\text{♩} = 75,999977 \text{ } \text{♩} = 75,999977 \text{ } \text{♩} = 75,999977 \text{ } \text{♩} = 75,999977$

Fl.

Melodie

Ob.

Tub. B.

Tnk. Bells

A.

Syn. Str.

Solo

Tel.



45 $\text{♩} = 76,999977 \text{ } \text{♩} = 77,999977 \text{ } \text{♩} = 76,999977 = 75,999977 \text{ } \text{♩} = 76,999977 = 75,999977 \text{ } \text{♩} = 76,999977 = 75,999977 \text{ } \text{♩} = 76,999977 = 75,999977$

Fl.

Melodie

Ob.

Tub. B.

Tnk. Bells

A.

Syn. Str.

Vla.

Solo

Tel.

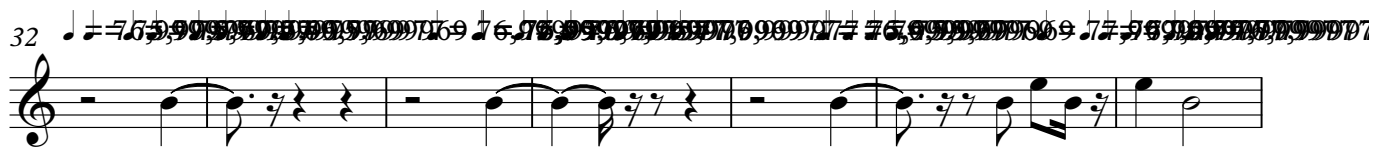
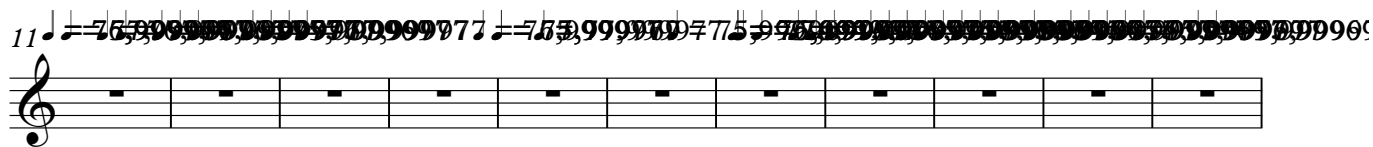
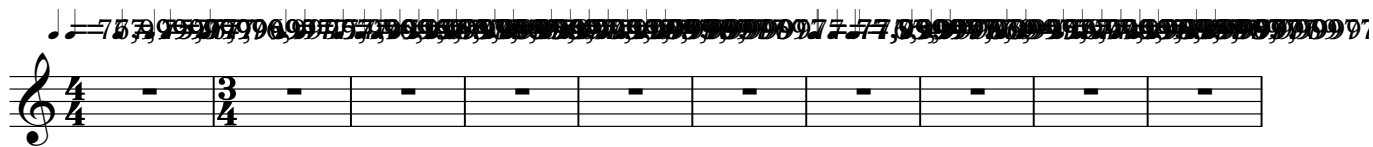
Xmas Carol - Silent Night

Oboe

The image displays a musical score for the Oboe part of the Christmas carol 'Silent Night'. The score is written on a single treble clef staff with a key signature of one sharp (F#) and a time signature of 4/4. The music begins with a 4-measure rest, followed by a 3-measure rest, and then enters with a melody starting on a G4. The score is divided into measures, with measure numbers 9, 16, 22, 29, 36, 42, 49, and 53 marked at the beginning of their respective lines. The notation includes various note values, rests, and accidentals (sharps and naturals). The piece concludes with a final double bar line at the end of the 53rd measure.

Xmas Carol - Silent Night

Tubular Bells



Xmas Carol - Silent Night

Solo

This image displays a guitar solo for the Christmas carol 'Silent Night'. The music is written on a single staff in treble clef, with a key signature of one sharp (F#) and a 4/4 time signature. The piece begins with a 4-measure rest, followed by a 3-measure rest, and then commences with a melodic line. The tablature is annotated with fret numbers (0-7) and includes various musical notations such as slurs, ties, and accidentals. Measure numbers 5, 8, 11, 14, 18, 21, 24, 28, and 32 are clearly marked on the left side of the staff. The notation includes many natural signs and sharp signs, indicating specific fretting and fingering techniques. The piece concludes with a 'V.S.' (Vivace) marking at the end of the final measure.

V.S.

Musical notation for the first system, including a treble clef, a key signature of one flat, and time signatures of 4/4 and 3/4.

Musical notation for the second system, including a treble clef and a key signature of one flat.

Musical notation for the third system, including a treble clef and a key signature of one flat.

Musical notation for the fourth system, including a treble clef, a key signature of one flat, and a 3/4 time signature. It features a melodic line with slurs and a bass line with a double bar line.

Musical notation for the fifth system, including a treble clef, a key signature of one flat, and a 3/4 time signature. It features a melodic line with slurs and a bass line with a double bar line.

Musical notation for the sixth system, including a treble clef, a key signature of one flat, and a 3/4 time signature. It features a melodic line with slurs and a bass line with a double bar line.