

Young Paul - Wherever I Lay My Hat

2.6"
2.1,00
LAYMYHAZ

♩ = 89,999954 ♩ = 89,999954

Ocarina

Alto Saxophone

Horn in F

Percussion

Fretless Electric Bass

Percussive Organ

Synth Brass

Pad 1 (New Age)

FX 1 (Rain)

♩ = 89,999954 ♩ = 89,999954

Viola




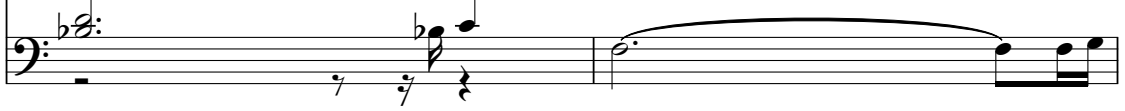
5

Perc.

E. Bass


7


Perc. 

E. Bass 



9

Perc. 

E. Bass 



11

Alto Sax. 

Perc. 

E. Bass 



13

Alto Sax. 

Perc. 

E. Bass 

15

Alto Sax. Perc. E. Bass

This system contains measures 15 and 16. The Alto Saxophone part begins with a treble clef, a key signature of one flat, and a 3-measure triplet of eighth notes. The Percussion part features a complex rhythmic pattern of eighth and sixteenth notes. The E. Bass part has a single half note in measure 15 and a whole note in measure 16.



17

Alto Sax. Perc. E. Bass

This system contains measures 17 and 18. The Alto Saxophone part continues with eighth and sixteenth notes. The Percussion part maintains its rhythmic pattern. The E. Bass part has a whole note in measure 17 and a whole note in measure 18.



19

Alto Sax. Perc. E. Bass

This system contains measures 19 and 20. The Alto Saxophone part has a few notes in measure 19 and a whole note in measure 20. The Percussion part continues with its rhythmic pattern. The E. Bass part has a whole note in measure 19 and a whole note in measure 20.

21

Alto Sax.

Perc.

E. Bass

Pad 1

Vla.



23

Alto Sax.

Perc.

E. Bass

Pad 1

Vla.



25

Alto Sax.

Perc.

E. Bass

27

Oc.

Alto Sax.

Perc.

E. Bass

Detailed description: This system covers measures 27 and 28. The Oboe (Oc.) part features a complex rhythmic pattern of eighth and sixteenth notes. The Alto Saxophone part has a melodic line with a long note in measure 27 and a more active line in measure 28. The Percussion part plays a steady eighth-note pattern with some accents. The Electric Bass part has a few notes in measure 28.



29

Oc.

Alto Sax.

Perc.

E. Bass

Detailed description: This system covers measures 29 and 30. The Oboe part continues with its rhythmic pattern. The Alto Saxophone part has a melodic line with a long note in measure 29 and a few notes in measure 30. The Percussion part maintains its eighth-note pattern. The Electric Bass part has a single note in measure 30.



31

Oc.

Alto Sax.

Perc.

E. Bass

Syn. Br.

Detailed description: This system covers measures 31 and 32. The Oboe part continues with its rhythmic pattern. The Alto Saxophone part has a melodic line with a long note in measure 31 and a few notes in measure 32. The Percussion part maintains its eighth-note pattern. The Electric Bass part has a melodic line with a triplet in measure 31. The Synthesizer part has a chord in measure 31 and a chord in measure 32.

33

33

Oc.

Alto Sax.

Perc.

E. Bass

Syn. Br.

Detailed description: This musical system covers measures 33 and 34. The Oboe (Oc.) part features a complex rhythmic pattern of eighth and sixteenth notes with various articulations. The Alto Saxophone (Alto Sax.) part has a melodic line with some rests. The Percussion (Perc.) part consists of a steady eighth-note accompaniment. The Electric Bass (E. Bass) part has a bass line with a triplet in measure 34. The Synthesizer/Brass (Syn. Br.) part provides harmonic support with chords in both measures.



35

35

Oc.

Alto Sax.

Perc.

E. Bass

Syn. Br.

Detailed description: This musical system covers measures 35 and 36. The Oboe (Oc.) part continues with its rhythmic pattern. The Alto Saxophone (Alto Sax.) part has a more active melodic line. The Percussion (Perc.) part remains consistent. The Electric Bass (E. Bass) part features a triplet in measure 35. The Synthesizer/Brass (Syn. Br.) part provides harmonic support with chords in both measures.

37

37

Oc.

Alto Sax.

Perc.

E. Bass

Syn. Br.

Detailed description: This system contains measures 37 and 38. The Oboe (Oc.) part features a complex rhythmic pattern of eighth and sixteenth notes with slurs. The Alto Saxophone (Alto Sax.) part has a melodic line with slurs and rests. The Percussion (Perc.) part consists of a steady eighth-note pattern with some accents. The Electric Bass (E. Bass) part has a melodic line with a long slur. The Synthesizer Brass (Syn. Br.) part provides a harmonic accompaniment with a long slur.



39

39

Oc.

Alto Sax.

Perc.

E. Bass

Pad 1

Vla.

Detailed description: This system contains measures 39 and 40. The Oboe (Oc.) part continues with its rhythmic pattern. The Alto Saxophone (Alto Sax.) part has a melodic line with slurs. The Percussion (Perc.) part continues with its eighth-note pattern. The Electric Bass (E. Bass) part has a melodic line with a long slur and a dynamic marking of 'f'. The Pad 1 part has a melodic line with slurs. The Viola (Vla.) part has a melodic line with slurs.

41

41

Oc.

Alto Sax.

Perc.

E. Bass

Pad 1

Vla.

Detailed description: This system of music covers measures 41 and 42. The Oboe (Oc.) part features a complex rhythmic pattern of eighth and sixteenth notes with various articulations. The Alto Saxophone (Alto Sax.) part has a melodic line with a long note in measure 41 and a more active line in measure 42. The Percussion (Perc.) part provides a steady accompaniment with a mix of eighth and sixteenth notes. The Electric Bass (E. Bass) part has a few notes in measure 41 and rests in measure 42. The Pad 1 part has a melodic line with eighth notes. The Viola (Vla.) part has a melodic line with eighth notes and some ties.



43

43

Oc.

Alto Sax.

Perc.

E. Bass

Pad 1

Vla.

Detailed description: This system of music covers measures 43 and 44. The Oboe (Oc.) part continues with its complex rhythmic pattern. The Alto Saxophone (Alto Sax.) part has a melodic line with a long note in measure 43 and a more active line in measure 44. The Percussion (Perc.) part provides a steady accompaniment with a mix of eighth and sixteenth notes. The Electric Bass (E. Bass) part has a few notes in measure 43 and rests in measure 44. The Pad 1 part has a melodic line with eighth notes. The Viola (Vla.) part has a melodic line with eighth notes and some ties.

45

Alto Sax. Perc. E. Bass Pad 1 Vla.

This musical system covers measures 45 and 46. The Alto Saxophone part begins with a whole rest in measure 45, followed by a quarter rest and a quarter note in measure 46. The Percussion part plays a continuous eighth-note pattern with a snare drum on the second and fourth beats. The Electric Bass part has a whole rest in measure 45 and a whole note in measure 46. The Pad 1 part plays a steady eighth-note line. The Viola part plays a sequence of eighth notes with a slur over the last two notes of each measure.



47

Alto Sax. Perc. E. Bass Pad 1 Vla.

This musical system covers measures 47 and 48. The Alto Saxophone part plays a quarter note in measure 47, followed by a quarter rest and a quarter note in measure 48. The Percussion part continues with the same eighth-note pattern. The Electric Bass part has a whole note in measure 47 and a whole note in measure 48. The Pad 1 part plays a steady eighth-note line. The Viola part plays a sequence of eighth notes with a slur over the last two notes of each measure.

49

Alto Sax.

Perc.

E. Bass

FX 1

Vla.



51

Alto Sax.

Perc.

E. Bass

FX 1

Vla.

53

Alto Sax.

Perc.

E. Bass

FX 1

Vla.



55

Alto Sax.

Hn.

Perc.

E. Bass

FX 1

Vla.

57

Score for measures 57-58. The score includes parts for Oboe (Oc.), Alto Saxophone (Alto Sax.), Horn (Hn.), Percussion (Perc.), Electric Bass (E. Bass), Synthesizer Brass (Syn. Br.), and Viola (Vla.). The Oboe and Alto Saxophone parts are active, while the Horn, Viola, and Synthesizer Brass parts are mostly silent or playing sustained chords. The Percussion part features a complex rhythmic pattern.



59

Score for measures 59-60. The score includes parts for Oboe (Oc.), Alto Saxophone (Alto Sax.), Horn (Hn.), Percussion (Perc.), Electric Bass (E. Bass), and Synthesizer Brass (Syn. Br.). The Oboe and Alto Saxophone parts continue their melodic lines. The Horn part has a long note with a slur. The Percussion part continues its rhythmic pattern. The Electric Bass part has a long note with a slur. The Synthesizer Brass part plays sustained chords.

61

61

Oc.

Alto Sax.

Perc.

E. Bass

Syn. Br.

Vla.

Detailed description: This system contains measures 61 and 62. The Oboe (Oc.) part features a complex rhythmic pattern of eighth and sixteenth notes with accents. The Alto Saxophone (Alto Sax.) part has a melodic line with a few notes in measure 61 and a more active line in measure 62. The Percussion (Perc.) part consists of a steady eighth-note pattern with occasional accents. The Electric Bass (E. Bass) part has a simple eighth-note line. The Synthesizer Brass (Syn. Br.) part provides harmonic support with chords. The Viola (Vla.) part has sparse notes, including a triplet in measure 62.



63

63

Oc.

Alto Sax.

Perc.

E. Bass

Syn. Br.

Vla.

Detailed description: This system contains measures 63 and 64. The Oboe (Oc.) part continues with its rhythmic pattern. The Alto Saxophone (Alto Sax.) part has a melodic line in measure 63 and a more active line in measure 64. The Percussion (Perc.) part continues with its steady eighth-note pattern. The Electric Bass (E. Bass) part has a simple eighth-note line. The Synthesizer Brass (Syn. Br.) part provides harmonic support with chords. The Viola (Vla.) part has sparse notes, including a triplet in measure 64.

65

Oc.

Alto Sax.

Perc.

E. Bass

Syn. Br.

Pad 1

Vla.

Detailed description: This system contains measures 65 and 66. The Oboe (Oc.) part is mostly silent with a few notes. The Alto Saxophone (Alto Sax.) has a melodic line with eighth and sixteenth notes. The Percussion (Perc.) part features a complex, rhythmic pattern with many sixteenth notes. The Electric Bass (E. Bass) has a bass line with a long note in measure 65 and a chord in measure 66. The Synthesizer Brass (Syn. Br.) part consists of block chords. The Pad 1 part has a few notes in measure 66. The Viola (Vla.) part has a few notes, including a chord in measure 66.



67

Alto Sax.

Perc.

E. Bass

Pad 1

Vla.

Detailed description: This system contains measures 67 and 68. The Alto Saxophone (Alto Sax.) has a melodic line with eighth and sixteenth notes. The Percussion (Perc.) part continues with a complex, rhythmic pattern. The Electric Bass (E. Bass) has a bass line with a long note in measure 67 and a chord in measure 68. The Pad 1 part has a melodic line with eighth and sixteenth notes. The Viola (Vla.) part has a melodic line with eighth and sixteenth notes.

69

69

Oc.

Alto Sax.

Perc.

E. Bass

Perc. Organ

Pad 1

Vla.

Detailed description: This block contains the musical notation for measures 69 and 70. The score is arranged in a system with seven staves. The top staff is for Oboe (Oc.), which is mostly silent with a few rests. The Alto Saxophone staff shows a melodic line with eighth and quarter notes. The Percussion staff features a complex, rhythmic pattern with many sixteenth notes. The Electric Bass staff has a few notes, including a whole note. The Percussion Organ staff is mostly silent. The Pad 1 staff has a few notes, including a quarter note. The Viola staff has a melodic line with eighth notes and a few rests.



71

71

Alto Sax.

Perc.

E. Bass

Perc. Organ

Pad 1

Vla.

Detailed description: This block contains the musical notation for measures 71 and 72. The Alto Saxophone staff has a few notes, including a quarter note. The Percussion staff continues with its rhythmic pattern. The Electric Bass staff has a melodic line with eighth notes and a few rests. The Percussion Organ staff has a few notes, including a quarter note. The Pad 1 staff has a melodic line with eighth notes. The Viola staff has a melodic line with eighth notes.

73

Alto Sax.

Perc.

E. Bass

Perc. Organ

Pad 1

Vla.

Detailed description: This system of music covers measures 73 and 74. The Alto Saxophone part (treble clef) features a melodic line with eighth and quarter notes. The Percussion part (drum set) has a complex, syncopated rhythm. The Electric Bass part (bass clef) plays a steady eighth-note pattern. The Percussion Organ part (treble clef) has a sustained chord. The Pad 1 part (treble clef) plays a melodic line with eighth notes. The Viola part (bass clef) plays a melodic line with eighth notes.



75

Alto Sax.

Perc.

E. Bass

Perc. Organ

Pad 1

Vla.

Detailed description: This system of music covers measures 75 and 76. The Alto Saxophone part (treble clef) has a melodic line with a slur over the first two notes. The Percussion part (drum set) continues with a complex, syncopated rhythm. The Electric Bass part (bass clef) plays a steady eighth-note pattern. The Percussion Organ part (treble clef) has a sustained chord with a slur. The Pad 1 part (treble clef) plays a melodic line with eighth notes. The Viola part (bass clef) plays a melodic line with eighth notes.

77

Alto Sax.

Perc.

E. Bass

Perc. Organ

Pad 1

Vla.



79

Alto Sax.

Perc.

E. Bass

Perc. Organ

Pad 1

Vla.

81

Alto Sax.

Perc.

E. Bass

Perc. Organ

Pad 1

Vla.



83

Alto Sax.

Perc.

E. Bass

Perc. Organ

Vla.

85

Alto Sax.

Perc.

E. Bass

Perc. Organ

Vla.

Detailed description: This system contains measures 85 and 86. The Alto Saxophone part (treble clef) starts with a dotted quarter note, followed by eighth notes and a half note. The Percussion part (drum set) has a consistent rhythmic pattern of eighth notes. The Electric Bass part (bass clef) plays a walking bass line with eighth notes and quarter notes. The Percussion Organ part (grand staff) features a long, sustained chord in the right hand and a single note in the left hand. The Viola part (bass clef) plays a series of chords and single notes.



87

Alto Sax.

Perc.

E. Bass

Perc. Organ

Vla.

Detailed description: This system contains measures 87 and 88. The Alto Saxophone part (treble clef) has a quarter rest in measure 87 and then plays eighth notes in measure 88. The Percussion part (drum set) continues with the same eighth-note pattern. The Electric Bass part (bass clef) continues with a walking bass line. The Percussion Organ part (grand staff) has a sustained chord in the right hand and a single note in the left hand. The Viola part (bass clef) plays chords and single notes.

89

Alto Sax.

Perc.

E. Bass

Perc. Organ

Vla.



91

Alto Sax.

Perc.

E. Bass

Perc. Organ

Vla.

93

Alto Sax.

Perc.

E. Bass

Perc. Organ

Pad 1

Vla.

Detailed description: This block contains the musical notation for measures 93 and 94. The Alto Saxophone part has a whole rest in measure 93 and a quarter note in measure 94. The Percussion part plays a continuous eighth-note pattern. The Electric Bass part has a quarter note in measure 93 and a quarter note in measure 94. The Percussion Organ part has a whole note chord in measure 93 and a whole note chord in measure 94. The Pad 1 part has a whole rest in measure 93 and a quarter note in measure 94. The Viola part plays a continuous eighth-note pattern.



95

Alto Sax.

Perc.

E. Bass

Perc. Organ

Pad 1

Vla.

Detailed description: This block contains the musical notation for measures 95 and 96. The Alto Saxophone part has a quarter note in measure 95 and a quarter note in measure 96. The Percussion part plays a continuous eighth-note pattern. The Electric Bass part has a quarter note in measure 95 and a quarter note in measure 96. The Percussion Organ part has a whole note chord in measure 95 and a whole note chord in measure 96. The Pad 1 part has a quarter note in measure 95 and a quarter note in measure 96. The Viola part plays a continuous eighth-note pattern.

97

Alto Sax.

Perc.

E. Bass

Perc. Organ

Pad 1

Vla.

≡

99

Alto Sax.

Perc.

E. Bass

Perc. Organ

Vla.

100

Alto Sax.

Perc.

E. Bass

Perc. Organ

Vla.

Detailed description: This system contains measures 100 and 101. The Alto Saxophone part features a melodic line with eighth and quarter notes. The Percussion part has a steady eighth-note pattern. The Electric Bass part plays a walking bass line. The Percussion Organ part has a sustained chord. The Viola part provides harmonic support with chords and single notes.



101

Alto Sax.

Perc.

E. Bass

Perc. Organ

Pad 1

Vla.

Detailed description: This system contains measures 101 and 102. The Alto Saxophone part continues its melodic line. The Percussion part maintains its eighth-note pattern. The Electric Bass part continues its walking bass line. The Percussion Organ part has a sustained chord. The Pad 1 part has a sustained chord. The Viola part provides harmonic support with chords and single notes.

103

Alto Sax.

Perc.

E. Bass

Perc. Organ

Pad 1

Vla.

Detailed description: This system contains measures 103 and 104. The Alto Saxophone part has a melodic line with eighth and quarter notes. The Percussion part features a complex rhythmic pattern with many sixteenth notes. The Electric Bass part has a steady eighth-note accompaniment. The Percussion Organ part has a long, sustained chord. The Pad 1 part has a melodic line with eighth notes. The Viola part has a rhythmic accompaniment with eighth notes.



105

Alto Sax.

Perc.

E. Bass

Perc. Organ

Pad 1

Vla.

Detailed description: This system contains measures 105 and 106. The Alto Saxophone part has a melodic line with quarter and eighth notes. The Percussion part continues with its complex rhythmic pattern. The Electric Bass part has a steady eighth-note accompaniment. The Percussion Organ part has a long, sustained chord. The Pad 1 part has a melodic line with eighth notes. The Viola part has a rhythmic accompaniment with eighth notes.

107

Alto Sax. Perc. E. Bass Perc. Organ Pad 1 Vla.

This musical system covers measures 107 and 108. The Alto Saxophone part begins with a whole note chord in measure 107 and remains silent in measure 108. The Percussion part features a complex, multi-layered rhythmic pattern of eighth and sixteenth notes. The Electric Bass part plays a steady eighth-note line. The Percussion Organ part has a long, sustained note that spans across both measures. The Pad 1 part plays a sequence of eighth notes. The Viola part plays a rhythmic pattern of eighth notes.



109

Perc. E. Bass Perc. Organ Pad 1 Vla.

This musical system covers measures 109 and 110. The Percussion part continues with its complex rhythmic pattern. The Electric Bass part continues with its eighth-note line. The Percussion Organ part has a long, sustained note that spans across both measures. The Pad 1 part plays a sequence of eighth notes. The Viola part continues with its rhythmic pattern of eighth notes.

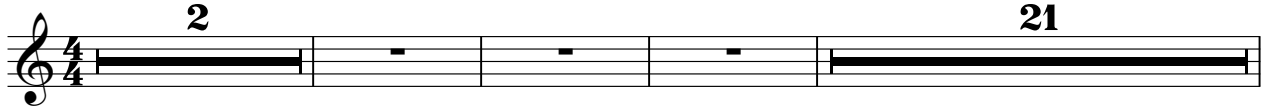
The image displays a musical score for five instruments: Perc., E. Bass, Perc. Organ, Pad 1, and Vla. The score is organized into five staves, each with its instrument name on the left. The Perc. staff uses a drum set icon and features a complex rhythmic pattern of eighth notes in the third measure, with asterisks above and brackets labeled '3' below. The E. Bass staff uses a bass clef and shows a long note with a slur. The Perc. Organ staff uses a bass clef and shows a long note with a slur. The Pad 1 staff uses a treble clef and shows a sequence of notes with a flat symbol. The Vla. staff uses a double bass clef and shows a long note with a slur.

Ocarina

Young Paul - Wherever I Lay My Hat

♩ = 89,999954 ♩ = 89,999954

2 21



27



29



31



33



35



37



39



41



43 12



57



59



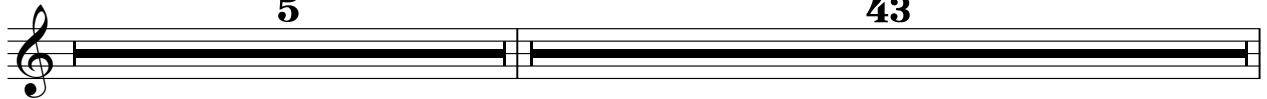
61



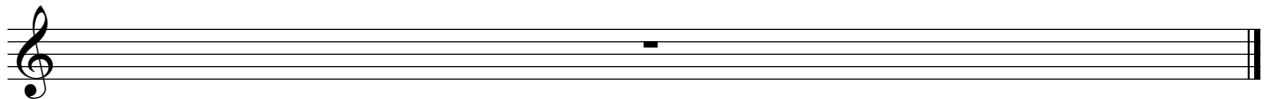
63



65

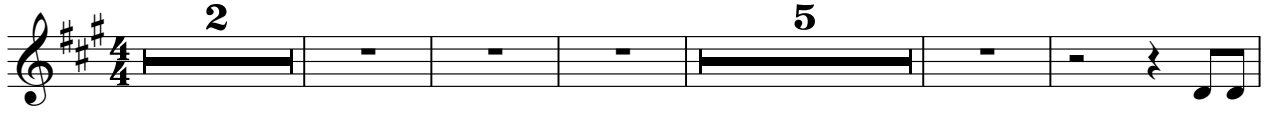


113



Alto Saxophone Young Paul - Wherever I Lay My Hat

♩ = 89,999954 ♩ = 89,999954



V.S.

52



57



61



65



69



74



78



82



87



90



93



97



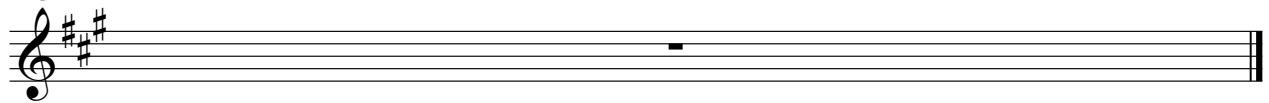
101



105



113



Horn in F

Young Paul - Wherever I Lay My Hat

♩ = 89,999954 ♩ = 89,999954

2 50

This musical staff is in 4/4 time with a key signature of one sharp (F#). It contains measures 1 through 50. Measures 1-4 are marked with a '2' above the staff, indicating a two-measure rest. Measures 5-49 are marked with a '50' above the staff, indicating a 45-measure rest. The staff ends with a double bar line.

56

2 52

This musical staff is in 4/4 time with a key signature of one sharp (F#). It contains measures 56 through 112. Measure 56 is marked with a '2' above the staff, indicating a two-measure rest. Measures 57-60 contain a melodic line: a quarter note G4, a quarter note A4, a quarter note B4, and a half note C5. Measures 61-111 are marked with a '52' above the staff, indicating a 51-measure rest. The staff ends with a double bar line.

113

This musical staff is in 4/4 time with a key signature of one sharp (F#). It contains measure 113, which is a whole rest. The staff ends with a double bar line.

Percussion

Young Paul - Wherever I Lay My Hat

♩ = 89,999954 ♩ = 89,999954

2

6

8

10

12

14

16

18

20

22

V.S.

24



26



28



30



32



34



36



38



40



42



44



46



48



50



52



54



56



58



60



62



V.S.

64



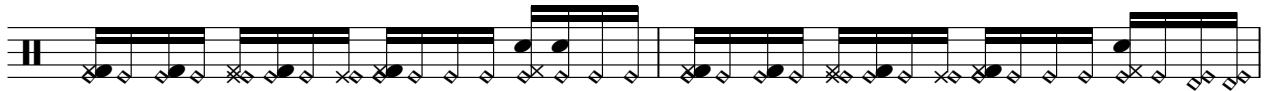
66



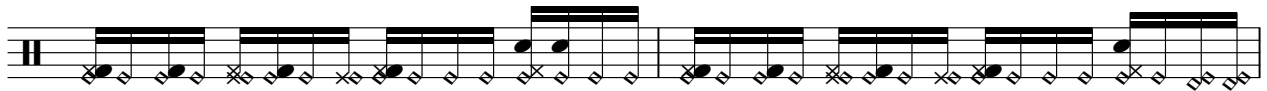
68



70



72



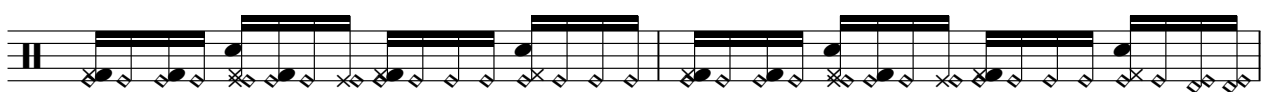
74



76



78



80



82



84



86



88



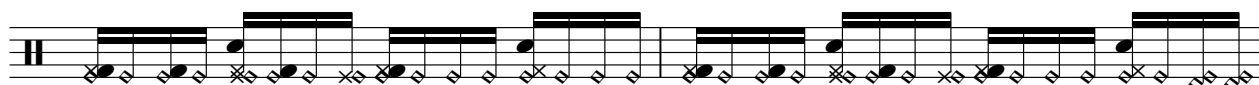
90



92



94



96



98



100



102



V.S.

104

Musical notation for measure 104, featuring a series of rhythmic patterns on a staff with a double bar line at the beginning. The notation includes eighth notes and rests, with some notes marked with 'x' symbols.

106

Musical notation for measure 106, featuring a series of rhythmic patterns on a staff with a double bar line at the beginning. The notation includes eighth notes and rests, with some notes marked with 'x' symbols.

108

Musical notation for measure 108, featuring a series of rhythmic patterns on a staff with a double bar line at the beginning. The notation includes eighth notes and rests, with some notes marked with 'x' symbols.

110

Musical notation for measure 110, featuring a series of rhythmic patterns on a staff with a double bar line at the beginning. The notation includes eighth notes and rests, with some notes marked with 'x' symbols. The measure concludes with a triplet of eighth notes, each marked with an asterisk, indicated by a bracket and the number '3' below.

113

Musical notation for measure 113, consisting of a single staff with a double bar line at the beginning and a single eighth note in the middle.

Young Paul - Wherever I Lay My Hat
Fretless Electric Bass

♩ = 89,999954 ♩ = 89,999954

2

6

11

19

26

32

37

42

49

52

V.S.

57



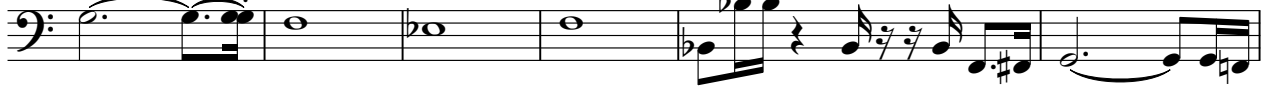
60



63



67



73



75



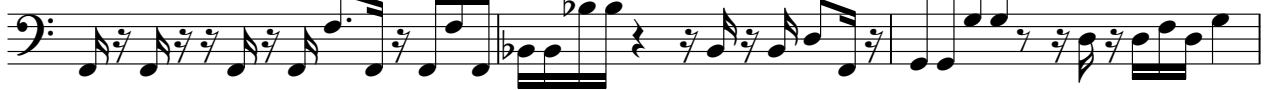
77



79



82



85



88



91



94



97



100



102



105



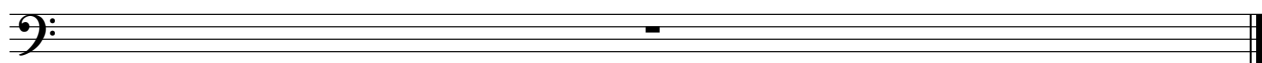
108



110




113



Percussive Organ Young Paul - Wherever I Lay My Hat

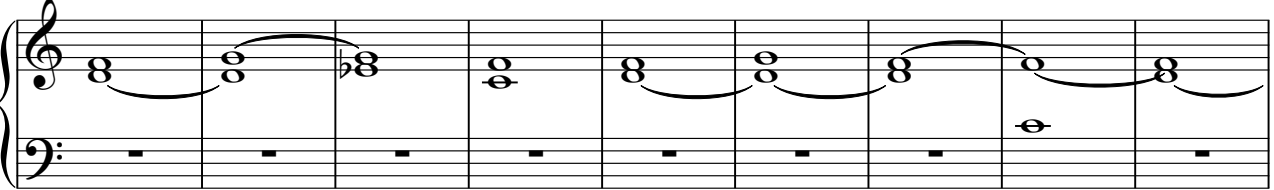
♩ = 89,999954 ♩ = 89,999954



2 63 2

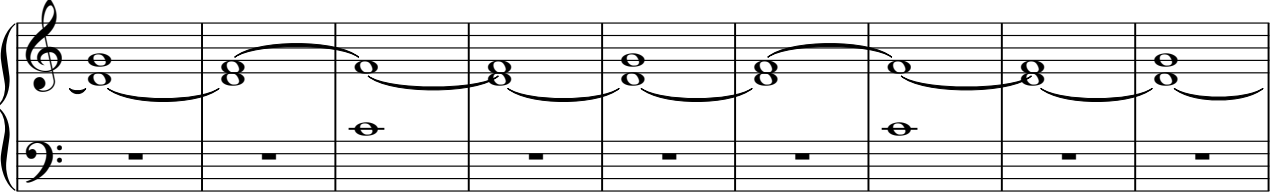
A musical staff in 4/4 time with measure rests. The first measure is marked with a '2', the next three measures are empty, the fifth measure is marked with a '63', and the final measure is marked with a '2'.

71



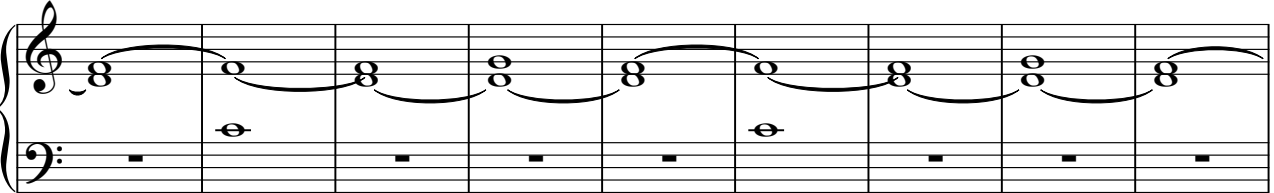
A musical staff with piano accompaniment. The treble clef contains a series of chords and notes, while the bass clef contains rests.

80



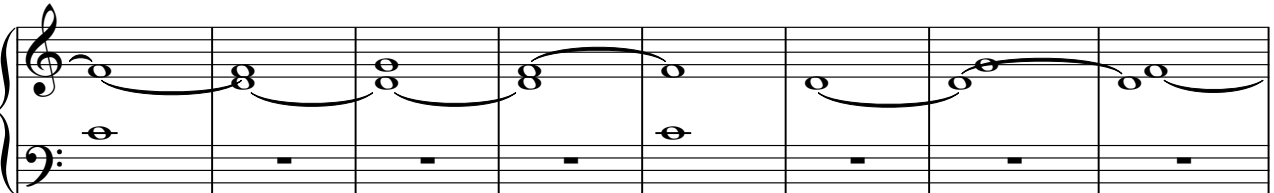
A musical staff with piano accompaniment. The treble clef contains a series of chords and notes, while the bass clef contains rests.

89



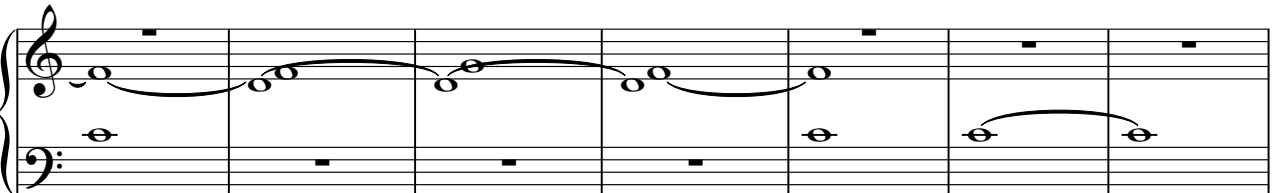
A musical staff with piano accompaniment. The treble clef contains a series of chords and notes, while the bass clef contains rests.

98



A musical staff with piano accompaniment. The treble clef contains a series of chords and notes, while the bass clef contains rests.

106

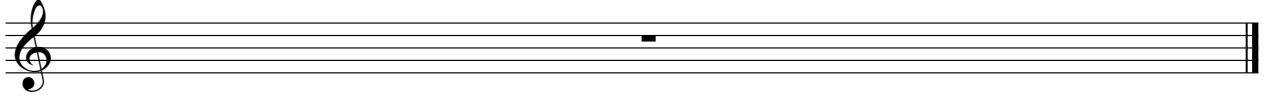


A musical staff with piano accompaniment. The treble clef contains a series of chords and notes, while the bass clef contains rests.

V.S.

Percussive Organ

113



Synth Brass

Young Paul - Wherever I Lay My Hat

♩ = 89,999954 ♩ = 89,999954

2 25

33 18

58

65 46

113

Pad 1 (New Age)

Young Paul - Wherever I Lay My Hat

♩ = 89,999954 ♩ = 89,999954

2 16

23 15

41

45

49 17

69

73

77

80 11

2

Pad 1 (New Age)

94



98



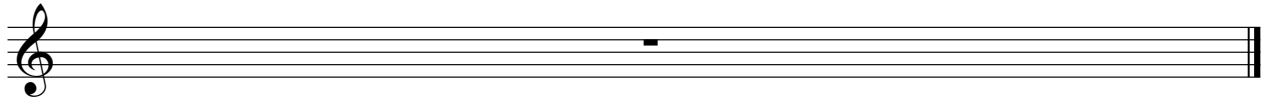
105



109



113



FX 1 (Rain)

Young Paul - Wherever I Lay My Hat

♩ = 89,999954 ♩ = 89,999954

2 43

51

55

56

113

Viola Young Paul - Wherever I Lay My Hat

♩ = 89,999954 ♩ = 89,999954

2 16

23 15

41

45

50

55 4

65

69

73

77

V.S.

Viola

81

85

91

93

95

97

99

101

103

105

107



109



113

