

Yves Duteil - Le Petit Pont De Bois

♩ = 120,000000

Kora

Acoustic Bass

Solo

5

Kora

A. Bass

Solo

Solo

8

Kora

A. Bass

Solo

Solo

11

Kora

A. Bass

Solo

Solo

15

Kora

A. Bass

Solo

Solo

19

Kora

A. Bass

Solo

Solo

22

Kora

A. Bass

Solo

Solo

25

Kora

A. Bass

Solo

Solo

29

Kora

A. Bass

Solo

Solo

33

Kora

A. Bass

Solo

Solo

36

Kora

A. Bass

Solo

Solo

39

Kora

A. Bass

Solo

Solo

43

Kora

A. Bass

Solo

Solo

47

Kora

A. Bass

Solo

Solo

50

Kora

A. Bass

Solo

Solo

54

Kora

A. Bass

Solo

Solo

The image shows a musical score for four parts: Kora, A. Bass, Solo, and Solo. The score is written in treble clef with a key signature of one sharp (F#) and a 7/8 time signature. The Kora part starts at measure 54 and features a melodic line with eighth and sixteenth notes. The A. Bass part provides a rhythmic accompaniment with eighth and sixteenth notes. The Solo part consists of two staves, with the first staff containing a melodic line and the second staff containing a bass line with chords and rests.

Yves Duteil - Le Petit Pont De Bois

Kora

♩ = 120,000000

3

7

11

15

19

23

27

31

35

39

V.S.

2

Kora

43



49



54



Yves Duteil - Le Petit Pont De Bois

Acoustic Bass

♩ = 120,000000

6

11

16

21

26

31

36

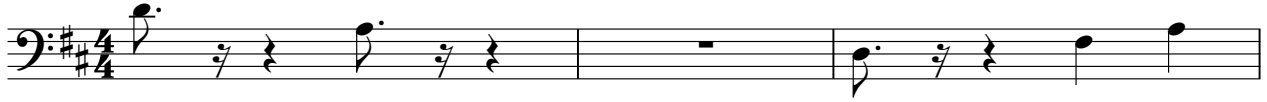
41

47

2

Acoustic Bass

52



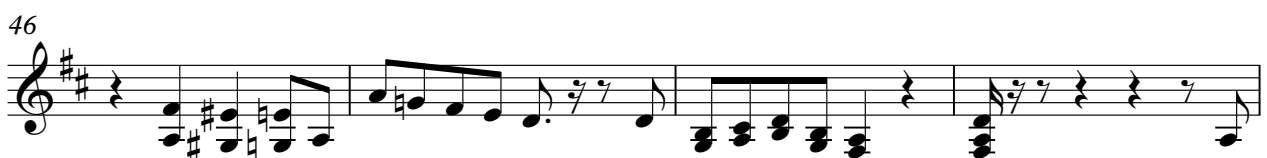
55



Yves Duteil - Le Petit Pont De Bois

Solo

♩ = 120,000000



V.S.

2

Solo

50



54



Yves Duteil - Le Petit Pont De Bois

Solo

♩ = 120,000000

5

11

2

18

2

25

2

32

2

39

2

47

3

53

2

Detailed description of the musical score: The score is written for a solo instrument in treble clef, one sharp (F#), and 4/4 time. It begins with a tempo marking of ♩ = 120,000000. The first staff (measures 1-10) features a five-measure rest marked with a '5' above it. The second staff (measures 11-20) has a two-measure rest marked with a '2' above it. The third staff (measures 21-30) also has a two-measure rest marked with a '2' above it. The fourth staff (measures 31-40) has a two-measure rest marked with a '2' above it. The fifth staff (measures 41-50) has a two-measure rest marked with a '2' above it. The sixth staff (measures 51-60) has a two-measure rest marked with a '2' above it. The seventh staff (measures 61-70) has a three-measure rest marked with a '3' above it, followed by a change in time signature to 2/4 for two measures, and then back to 4/4. The eighth staff (measures 71-80) has a two-measure rest marked with a '2' above it, ending with a double bar line.