

# Dead By Sunrise - Into you

♩ = 88,000023

Track 3

Track 1

Track 5

Track 2

Track 5 TAB: E B G A D A E A 2 0 3 2 0 3 0



4

Track 3

Track 1

Track 2

Track 4

2

6

Track 3



Track 1



Track 2



Track 4



8

Track 3



Track 1



Track 2



Track 4



10

Track 3

Track 1

Track 2

Track 6

Track 4



12

Track 3

Track 1

Track 2

Track 6

Track 3



Track 1



Track 2

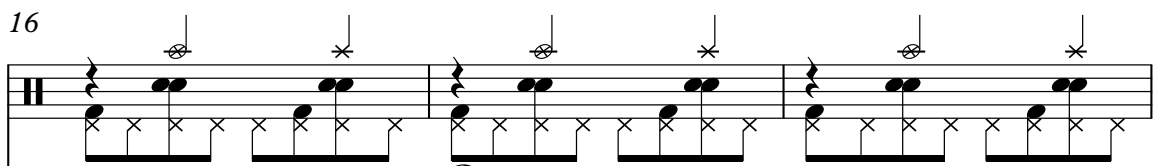


Track 6



16

Track 3



Track 2



Track 7



Track 6



19

Track 3: Guitar track with a repeating rhythmic pattern of eighth notes and chords, marked with asterisks and circled X's. Includes a double bar line at the start.

Track 2: Bass line with a simple harmonic accompaniment.

Track 7: Treble clef track with block chords.

Track 6: Treble clef track with a melodic line.



22

Track 3: Guitar track with a rhythmic pattern, including a double bar line at the start.

Track 1: Treble clef track with a melodic line.

Track 2: Bass line with a simple harmonic accompaniment.

Track 7: Treble clef track with block chords.

Track 6: Treble clef track with a melodic line.

25

Musical score for tracks 3, 1, 2, and 6 starting at measure 25. Track 3 (drums) features a complex rhythmic pattern with many 'x' marks. Track 1 (treble clef) has a melodic line with eighth and quarter notes. Track 2 (bass clef) has a simple bass line with quarter and eighth notes. Track 6 (treble clef) has a melodic line with eighth and quarter notes, including a sharp sign.



27

Musical score for tracks 3, 1, 2, and 6 starting at measure 27. Track 3 (drums) continues with its complex rhythmic pattern. Track 1 (treble clef) continues its melodic line. Track 2 (bass clef) continues its bass line. Track 6 (treble clef) continues its melodic line, including a sharp sign and a 7-measure rest.

29

Track 3

Track 1

Track 2

Track 7

Track 6



32

Track 3

Track 2

Track 7

Track 6

35

Track 3

Track 2

Track 7

Track 6



37

Track 3

Track 8

Track 5

Track 2

Track 7

Track 6

T	0	0	0	0	0	4	4	4	4
A						4	4	4	4
B	3	3	3	3	3	2	2	2	2
						#	?	?	?



39

Track 3

Track 8

Track 5

T					0	0	0	0
A	4	4	4	4	0	0	0	0
B	2	2	2	2	3	3	3	3
	?	?	?		?	?	?	?

Track 2

Track 6



41

Track 3

Track 8

Track 5

T	0	0	0	0	0	0	4	4	4	4
A	0	0	0	0	0	0	4	4	4	4
B	3	3	3	3	3	3	2	2	2	2
	?	?	?	?	?	?	?	?	?	?

Track 2

Track 6

43

Track 3

Track 8

Track 5

Track 2

Track 6

T						0	0	0	0
A	4	4	4	4		0	0	0	0
B	2	2	2	2		3	3	3	3
	?	?	?			?	?	?	?



45

Track 3

Track 8

Track 5

Track 2

Track 6

Track 4

T	0	0	0	0	0	2	0
A	0	0	0	0	0	2	4
B	3	3	3	3	3	0	2
	?	?	?	?	?		2

47

Track 3

Track 8

Track 5

Track 2

Track 6

Track 4

49

Track 3

Track 8

Track 5


Track 2

Track 6

Track 4

51

Track 3




Track 8



Track 5

T		
A	0	4
B	0	4
	5	2
	?	?


Track 2



Track 6



Track 4



53

Track 3

Track 1

Track 8

Track 5

T 0  
A 0  
B 3

Track 2

Track 6

Track 4

55

Track 3

Track 1

Track 2

Track 6

Track 4

57

Track 3



Track 1



Track 2



Track 6



Track 4



59

Track 3



Track 8



Track 5

T	0
A	0
B	3

Track 2



Track 7



Track 6



61

Track 3

Track 2

Track 7

Track 6

Detailed description: This block contains the musical notation for measures 61-63. Track 3 (Guitar) features a rhythmic pattern of eighth notes with fretting (circles) and picking (asterisks) above the staff. Track 2 (Bass) plays octaves, with a key signature change to one sharp (F#) at the start of measure 62. Track 7 (Piano) plays chords in the right hand, with a key signature change to one sharp at the start of measure 62. Track 6 (Piano) plays a melodic line in the right hand, with a key signature change to one sharp at the start of measure 62.



64

Track 3

Track 2

Track 7

Track 6

Detailed description: This block contains the musical notation for measures 64-66. Track 3 (Guitar) continues with the same rhythmic pattern as in the previous block. Track 2 (Bass) continues with octaves, with a key signature change to one sharp at the start of measure 65. Track 7 (Piano) continues with chords, with a key signature change to one sharp at the start of measure 65. Track 6 (Piano) continues with a melodic line, with a key signature change to one sharp at the start of measure 65.

67

Track 3

Track 5

T	0	0	0	0	0	0	0	0	0	0	0	0	0	0	0
A															
B	3	3	3	3	3	3	3	3	3	3	3	3	3	3	3

Track 2

Track 7

Track 6



68

Track 3

Track 8

Track 5

T	0				0
A	4				0
B	2				0

Track 6

Track 4



70

Track 3

Track 8

Track 5

Track 6

Track 4

Track 5 guitar tabs:  
T: 0 0  
A: 4 4  
B: 2 3



72

Track 3

Track 8

Track 5

Track 6

Track 4

Track 5 guitar tabs:  
T: 0 0  
A: 4 0  
B: 2 0



Track 3

Dead By Sunrise - Into you

♩ = 88,000023

4

6

8

10

12

14

17

20

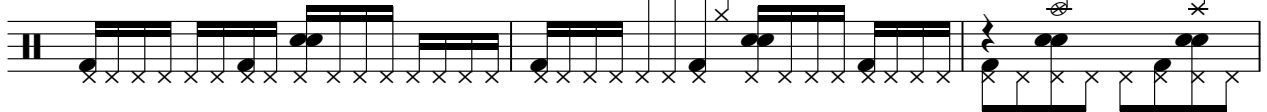
24



26



28



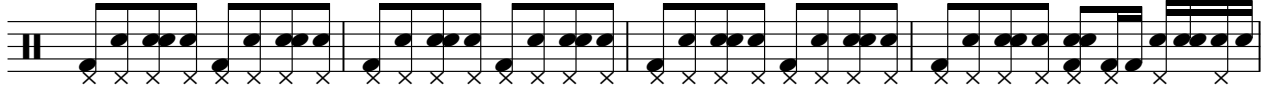
31



35



38



42



46



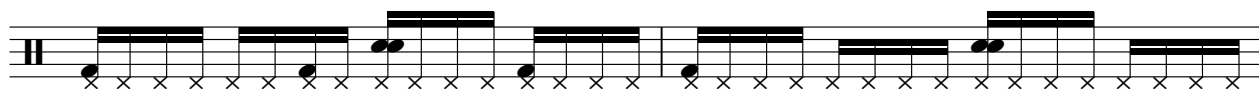
50



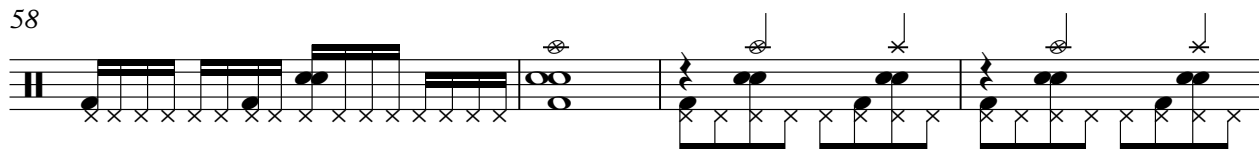
54



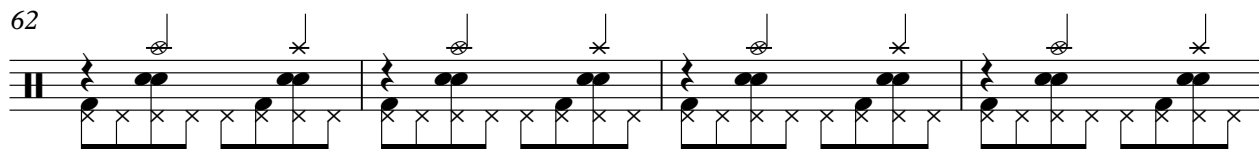
56



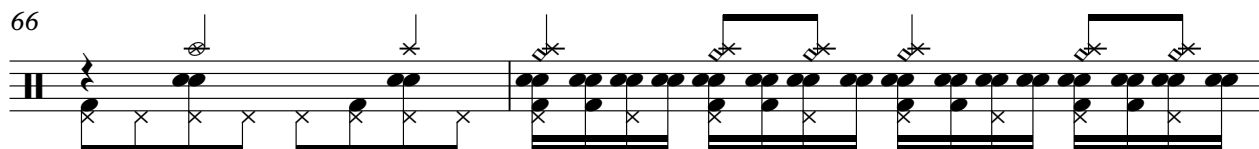
58



62



66



68



72



Track 1

Dead By Sunrise - Into you

$\text{♩} = 88,000023$

5

9

13

8

24

28

24

55

58

18

Track 8

Dead By Sunrise - Into you

♩ = 88,000023

**37**

39

41

43

45

47

49

51

54 **5** **8**

68



70



72



74





# Dead By Sunrise - Into you

## Track 5

♩ = 88,000023

**33**

E									
T									
A	2	0	2	0	-----				0 0 0 0 0
B									
E			3		3	0			
A									3 3 3 3 3

38

T						0 0	0 0		0 0	0 0	0 0
A	4 4	4 4	4 4	4 4	4 4	4 4	4 4	0 0	0 0	0 0	0 0
B	2 2	2 2	2 2	2 2	2 2	2 2	2 2	3 3	3 3	3 3	3 3
	?	?	?	?	?	?	?	?	?	?	?

42

T						0 0	0 0		0 0	0 0	0 2	0
A	4 4	4 4	4 4	4 4	4 4	4 4	4 4	0 0	0 0	0 0	0 2	4
B	2 2	2 2	2 2	2 2	2 2	2 2	2 2	3 3	3 3	3 3	3 0	2
	?	?	?	?	?	?	?	?	?	?	?	2

47

**5**

T			0	0								0
A	0	4	0	4	0	4	0	-----				0
B	0	4	0	2	0	4	0					0
	5	?	?	2	5	?	?					3

60

**7**

T												0
A	-----											4
B												2
												0
												0
												5
												?

70

T												
A	4	0	4	0	4	0						
B	4	0	2	0	4	0						
	2	3	2	5	2	3						
	?	?	?	?	?	?						

Track 2

Dead By Sunrise - Into you

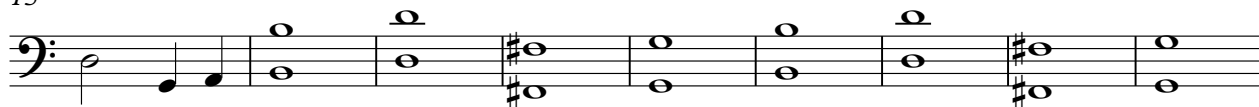
♩ = 88,000023



8



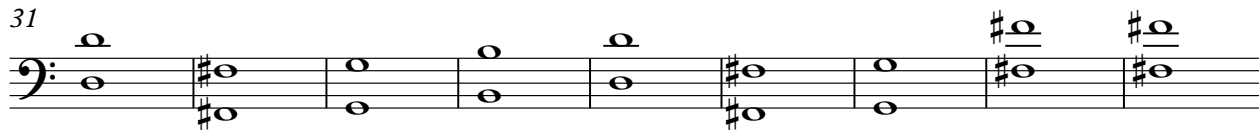
15



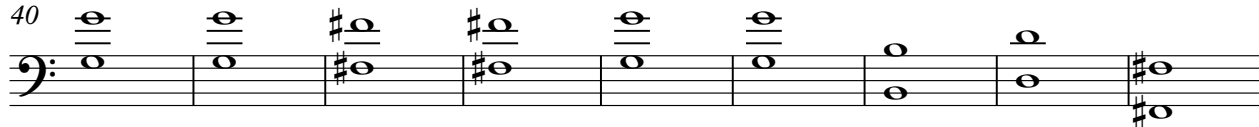
24



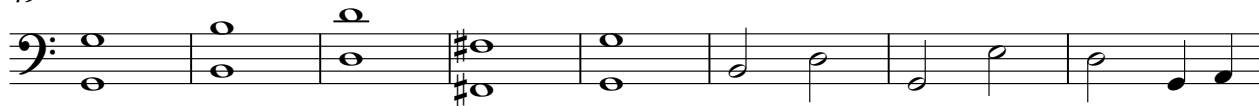
31



40



49



57



63



Track 7

Dead By Sunrise - Into you

♩ = 88,000023

**15**

23

**6**

36

**22**

63

**9**



54



