

DJ Otzi - Hey Baby

♩ = 135,002563

Brass

♩ = 135,002563

Voice ohh



4

Drums

Steel git

Dist. git

Applause



6

Drums

Steel git

Dist. git

Applause



8

Drums

Steel git

Dist. git

Synth bas

Brass

Applause

9

Detailed description: This system contains measures 8 and 9. The Drums part features a complex, multi-layered rhythmic pattern with various note values and rests. The Steel guitar part consists of chords and melodic lines. The Distorted guitar part has a simple, rhythmic melody. The Synth bass part provides a low-frequency accompaniment. The Brass part has a long, sustained note in the first measure followed by a melodic line. The Applause part is represented by a simple rhythmic pattern.



10

Drums

Steel git

Dist. git

Synth bas

Brass

Voice ohh

Detailed description: This system contains measures 10 and 11. The Drums part continues with a similar complex rhythmic pattern. The Steel guitar part has chords and melodic lines. The Distorted guitar part has a simple, rhythmic melody. The Synth bass part provides a low-frequency accompaniment. The Brass part has a melodic line. The Voice ohh part has a simple, rhythmic pattern.

12

Drums

Steel git

Dist. git

Synth bas

Brass

Detailed description: This system contains measures 12 and 13. The Drums part features a complex, multi-layered pattern with various rhythmic values and accents. The Steel guitar part consists of dense, sustained chords with some melodic movement. The Distorted guitar part has a simple, rhythmic line with some chromaticism. The Synth bass part provides a low-end harmonic foundation with a steady eighth-note pattern. The Brass part has a few notes, including a half note and a quarter note.



14

Drums

Steel git

Dist. git

Synth bas

Brass

Voice ohh

Detailed description: This system contains measures 14 and 15. The Drums part continues with a similar complex pattern. The Steel guitar part remains dense with chords. The Distorted guitar part continues its rhythmic line. The Synth bass part continues its eighth-note pattern. The Brass part has a few notes, including a half note and a quarter note. The Voice ohh part consists of sustained chords.

16

Drums

Steel git

Dist. git

Synth bas

Brass

Detailed description: This system contains measures 16 and 17. The Drums part features a complex, multi-layered rhythm with various drum sounds indicated by 'x' marks and arrows. The Steel guitar part consists of dense, rhythmic chords. The Distorted guitar part has a simple melodic line with some rests. The Synth bass part follows a similar melodic pattern to the distorted guitar. The Brass part has a long, sustained note in the first measure followed by a few notes in the second measure.



18

Drums

Steel git

Dist. git

Synth bas

Brass

Voice ohh

Detailed description: This system contains measures 18 and 19. The Drums part continues with the same complex rhythm. The Steel guitar part remains dense with chords. The Distorted guitar part has a simple melodic line. The Synth bass part follows the same melodic pattern. The Brass part has a few notes in the first measure and then rests. The Voice ohh part has a few notes in the first measure and then rests.

20

Drums

Steel git

Dist. git

Synth bas

Brass

Detailed description: This system of musical notation covers measures 20 and 21. The Drums part features a complex, multi-layered pattern with various rhythmic values and accents. The Steel guitar part consists of dense, multi-voice chords, some with a tremolo effect. The Distorted guitar part has a melodic line with a few accidentals. The Synth bass part provides a low-frequency accompaniment with a steady eighth-note pulse. The Brass part has a simple melodic line with some rests.



22

Drums

Steel git

Dist. git

Synth bas

Brass

Detailed description: This system of musical notation covers measures 22 and 23. The Drums part continues with a similar complex pattern to the previous system. The Steel guitar part shows a change in chord voicings, with some notes being sustained. The Distorted guitar part has a melodic line that ends with a rest in measure 23. The Synth bass part continues with its eighth-note accompaniment. The Brass part has a simple melodic line with some rests.

24

Drums

Steel git

Dist. git

Synth bas

Brass



26

Drums

Steel git

Dist. git

Synth bas

Brass

28

Drums

Steel git

Dist. git

Synth bas

Brass



30

Drums

Steel git

Dist. git

Synth bas

Brass

32

Drums

Steel git

Dist. git

Synth bas

Brass

Detailed description: This system of musical notation covers measures 32 and 33. It features five staves: Drums, Steel guitar, Distorted guitar, Synth bass, and Brass. The Drums staff shows a complex, multi-layered rhythmic pattern with various note heads and stems. The Steel guitar staff contains dense, multi-voice chords. The Distorted guitar staff has a simple melodic line with some rests. The Synth bass staff follows a similar melodic line to the distorted guitar. The Brass staff has a long, sustained note in the first measure, followed by a few notes in the second measure.



34

Drums

Steel git

Dist. git

Synth bas

Brass

Voice ohh

Detailed description: This system of musical notation covers measures 34 and 35. It features six staves: Drums, Steel guitar, Distorted guitar, Synth bass, Brass, and Voice ooh. The Drums staff continues with a similar rhythmic pattern. The Steel guitar staff has dense chords. The Distorted guitar staff has a melodic line. The Synth bass staff has a melodic line. The Brass staff has a few notes in the second measure. The Voice ooh staff has a few notes in the second measure.

36

Drums

Steel git

Dist. git

Synth bas

Brass

Detailed description: This system of musical notation covers measures 36 and 37. It features five staves: Drums, Steel guitar, Distorted guitar, Synth bass, and Brass. The Drums staff shows a complex, multi-layered rhythmic pattern with various note heads and stems. The Steel guitar staff contains dense chordal textures with many beamed notes. The Distorted guitar staff has a melodic line with some chromatic movement. The Synth bass staff provides a low-frequency accompaniment with a steady eighth-note pulse. The Brass staff has a sparse, melodic line with some rests.



38

Drums

Steel git

Dist. git

Synth bas

Brass

Voice ohh

Detailed description: This system of musical notation covers measures 38, 39, 40, and 41. It features six staves: Drums, Steel guitar, Distorted guitar, Synth bass, Brass, and Voice ooh. The Drums staff continues with a similar complex rhythmic pattern. The Steel guitar staff maintains its dense chordal texture. The Distorted guitar staff has a melodic line with some chromatic movement. The Synth bass staff provides a low-frequency accompaniment with a steady eighth-note pulse. The Brass staff has a sparse, melodic line with some rests. The Voice ooh staff has a sparse, melodic line with some rests.

40

Drums

Steel git

Dist. git

Synth bas

Brass



42

Drums

Steel git

Dist. git

Synth bas

Brass

Voice ohh

44

Drums

Steel git

Dist. git

Synth bas

Brass



46

Drums

Steel git

Dist. git

Synth bas

Brass

48

Drums

Steel git

Dist. git

Synth bas

Brass



50

Drums

Steel git

Dist. git

Synth bas

Brass

52

Drums

Steel git

Dist. git

Synth bas

Brass



54

Drums

Steel git

Dist. git

Synth bas

Brass

56

Drums

Steel git

Dist. git

Synth bas

Brass



58

Drums

Steel git

Dist. git

Synth bas

Brass

Voice ohh

60

Drums

Steel git

Dist. git

Synth bas

Brass

Detailed description: This system contains measures 60 and 61. The Drums part features a complex, multi-layered rhythmic pattern with various drum sounds indicated by different note heads and stems. The Steel guitar part consists of a series of chords and arpeggios, some with a 'x' above the notes indicating muted strings. The Distorted guitar part has a simple melodic line with some rests. The Synth bass part provides a low-frequency accompaniment with a few notes and rests. The Brass part has a few notes, including a half note and a quarter note.



62

Drums

Steel git

Dist. git

Synth bas

Brass

Voice ohh

Detailed description: This system contains measures 62 and 63. The Drums part continues with the same complex rhythmic pattern as in the previous system. The Steel guitar part remains consistent with the previous system. The Distorted guitar part has a simple melodic line. The Synth bass part continues with its accompaniment. The Brass part has a few notes, including a half note and a quarter note. The Voice ohh part has a series of chords and rests.

64

Drums

Steel git

Dist. git

Synth bas

Brass

Detailed description: This system of musical notation covers measures 64 and 65. The Drums part features a complex, multi-layered rhythm with various drum sounds indicated by 'x' marks and stems. The Steel guitar part consists of dense, rhythmic chords. The Distorted guitar part has a melodic line with some rests. The Synth bass part provides a low-frequency accompaniment. The Brass part has a long, sustained note in the first measure followed by a few notes in the second.



66

Drums

Steel git

Dist. git

Synth bas

Brass

Voice ohh

Detailed description: This system of musical notation covers measures 66 and 67. The Drums part continues with a similar complex rhythm. The Steel guitar part remains dense with chords. The Distorted guitar part has a melodic line. The Synth bass part continues its accompaniment. The Brass part has a melodic line with some rests. The Voice ohh part has a few notes in the first measure followed by rests.

68

Drums

Steel git

Dist. git

Synth bas

Brass

Detailed description: This system contains measures 68 and 69. The Drums part features a complex, multi-layered rhythm with various drum sounds indicated by 'x' marks and stems. The Steel guitar part consists of dense, sustained chords in the upper register. The Distorted guitar part has a simple, rhythmic melody. The Synth bass part provides a low-frequency accompaniment with a steady eighth-note pattern. The Brass part has a melodic line with some rests.



70

Drums

Steel git

Dist. git

Synth bas

Brass

Voice ohh

Detailed description: This system contains measures 70 and 71. The Drums part continues with the same complex rhythm as in the previous system. The Steel guitar part remains dense with sustained chords. The Distorted guitar part continues its simple melody. The Synth bass part maintains its eighth-note accompaniment. The Brass part is mostly silent, with only a few notes at the beginning of measure 70. The Voice ohh part features a melodic line with some rests and a final chord at the end of measure 71.

72

Drums

Dist. git

Synth bas

Brass



74

Drums

Dist. git

Synth bas

Brass

Voice ohh

76

Drums

Dist. git

Synth bas

Brass

Detailed description: This system contains measures 76 and 77. The Drums part features a complex, multi-layered pattern with various rhythmic values and accents. The Dist. git part has a melodic line with some chromaticism and rests. The Synth bas part provides a low-frequency accompaniment. The Brass part has a few notes, including a triplet in measure 77.



78

Drums

Dist. git

Sfx

Synth bas

Brass

Voice ohh

Detailed description: This system contains measures 78 and 79. The Drums part continues with a similar pattern to the previous system. The Dist. git part has a melodic line with rests. The Sfx part has a few notes, including a triplet in measure 79. The Synth bas part provides a low-frequency accompaniment. The Brass part has a few notes, including a triplet in measure 79. The Voice ohh part has a few notes, including a triplet in measure 79.

80

Drums

Steel git

Dist. git

Synth bas

Brass



81

Drums

Steel git

Dist. git

Synth bas

Brass

82

Drums

Steel git

Dist. git

Synth bas

Brass

Voice ohh

Detailed description: This block contains the musical notation for measures 82 and 83. The score is arranged in a system with six staves. The top staff is for Drums, showing a complex rhythmic pattern with various note heads and stems. The second staff is for Steel guitar, featuring a melodic line with a prominent double bar line and a fermata. The third staff is for Distorted guitar, with a simple melodic line. The fourth staff is for Synth bass, showing a bass line with several notes. The fifth staff is for Brass, with a few notes and rests. The sixth staff is for Voice oohs, with a few notes and rests. A double bar line is located to the left of the system.



83

Drums

Steel git

Dist. git

Synth bas

Brass

Voice ohh

Detailed description: This block contains the musical notation for measures 83 and 84. The score is arranged in a system with six staves. The top staff is for Drums, showing a complex rhythmic pattern with various note heads and stems. The second staff is for Steel guitar, featuring a melodic line with a prominent double bar line and a fermata. The third staff is for Distorted guitar, with a simple melodic line. The fourth staff is for Synth bass, showing a bass line with several notes. The fifth staff is for Brass, with a few notes and rests. The sixth staff is for Voice oohs, with a few notes and rests.

84

Drums

Steel git

Dist. git

Synth bas

Brass



85

Drums

Steel git

Dist. git

Synth bas

Brass

86

Drums

Steel git

Dist. git

Synth bas

Brass



87

Drums

Steel git

Dist. git

Synth bas

88

Drums

Steel git

Dist. git

Synth bas

Brass



89

Drums

Steel git

Dist. git

Synth bas

Brass

90

Drums

Steel git

Dist. git

Synth bas

Brass

Voice ohh

Detailed description: This system contains measures 90 and 91. The Drums part features a complex rhythmic pattern with various note values and rests. The Steel guitar part consists of chords and melodic lines, with some notes tied across measures. The Distorted guitar part has a sparse, rhythmic pattern. The Synth bass part provides a low-frequency accompaniment. The Brass part has a few notes with a slur. The Voice ooh part has a few notes with a slur.



91

Drums

Steel git

Dist. git

Synth bas

Brass

Voice ohh

Detailed description: This system contains measures 91 and 92. The Drums part continues the rhythmic pattern from the previous system. The Steel guitar part has more complex chordal structures. The Distorted guitar part has a more active rhythmic pattern. The Synth bass part has a more active line. The Brass part has a few notes with a slur. The Voice ooh part has a few notes with a slur.

92

Drums

Steel git

Dist. git

Synth bas

Brass



93

Drums

Steel git

Dist. git

Synth bas

Brass

DJ Otzi - Hey Baby

Drums

♩ = 135,002563

3

6

8

10

12

14

16

18

20

22

V.S.

Drums

The image displays a page of drum notation for guitar, consisting of ten systems of music. Each system begins with a measure number (24, 26, 28, 30, 32, 34, 36, 38, 40, 42) and a vertical bar line. The notation is written on a staff with a treble clef. It features a variety of rhythmic symbols, including eighth notes, sixteenth notes, and rests, which are used to represent different drum parts. Specific drum symbols are used throughout, such as 'x' for cymbals and 'H' for hi-hats. The notation is organized into four-measure groups, with the measure numbers indicating the start of each group. The overall structure is consistent across all systems, providing a clear and detailed representation of the drum part for the guitar.

44

46

48

50

52

54

56

58

60

62

V.S.

Drum notation for measures 64 through 82. Each measure is represented by a two-staff system. The top staff shows the bass drum with 'x' marks for hits, and the bottom staff shows the snare drum with upward-pointing arrows for hits. The notation is organized into four-measure groups, with a double bar line after the second measure of each group. Measure 64 starts with an asterisk on the first bass drum hit. The pattern of hits is consistent across all measures, with the bass drum playing a steady eighth-note pulse and the snare drum playing a more complex, syncopated pattern.

84

Musical notation for measures 84 and 85. The notation consists of two staves: a top staff with a treble clef and a bottom staff with a bass clef. The top staff contains a series of eighth notes with 'x' marks above them, indicating a specific drum pattern. The bottom staff contains a series of eighth notes with upward-pointing arrows, indicating a specific guitar or bass line. The measures are grouped by a bracket above the top staff.

86

Musical notation for measures 86 and 87. The notation consists of two staves: a top staff with a treble clef and a bottom staff with a bass clef. The top staff contains a series of eighth notes with 'x' marks above them, indicating a specific drum pattern. The bottom staff contains a series of eighth notes with upward-pointing arrows, indicating a specific guitar or bass line. The measures are grouped by a bracket above the top staff.

88

Musical notation for measures 88 and 89. The notation consists of two staves: a top staff with a treble clef and a bottom staff with a bass clef. The top staff contains a series of eighth notes with 'x' marks above them, indicating a specific drum pattern. The bottom staff contains a series of eighth notes with upward-pointing arrows, indicating a specific guitar or bass line. The measures are grouped by a bracket above the top staff.

90

Musical notation for measures 90 and 91. The notation consists of two staves: a top staff with a treble clef and a bottom staff with a bass clef. The top staff contains a series of eighth notes with 'x' marks above them, indicating a specific drum pattern. The bottom staff contains a series of eighth notes with upward-pointing arrows, indicating a specific guitar or bass line. The measures are grouped by a bracket above the top staff.

92

Musical notation for measures 92 and 93. The notation consists of two staves: a top staff with a treble clef and a bottom staff with a bass clef. The top staff contains a series of eighth notes with 'x' marks above them, indicating a specific drum pattern. The bottom staff contains a series of eighth notes with upward-pointing arrows, indicating a specific guitar or bass line. The measures are grouped by a bracket above the top staff.

Steel git

DJ Otzi - Hey Baby

♩ = 135,002563

3

6

9

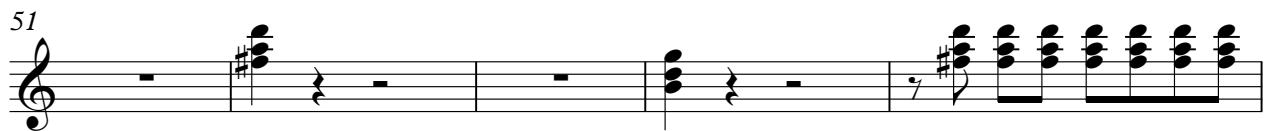
12

15

18

21

24



65

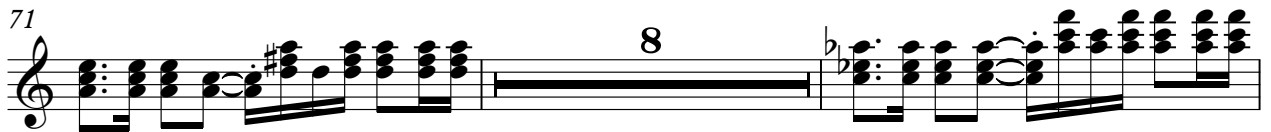


68



71

8



81



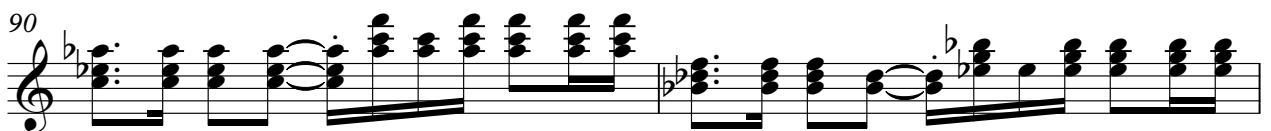
84



87



90



92

2



♩ = 135,002563

3

7

11

15

19

24

28

33

37

41

V.S.

Detailed description: The image shows a guitar score for the song 'Hey Baby' by DJ Otzi. The score is written in 4/4 time and begins with a tempo marking of 135,002563. The first measure contains a 3-measure rest, indicated by a '3' above a thick horizontal bar. The melody consists of eighth notes, with a repeating pattern of G4, A4, B4, C5, B4, A4, G4, F#4, E4, D4. The score is divided into measures, with measure numbers 7, 11, 15, 19, 24, 28, 33, 37, and 41 marked at the start of their respective lines. The notation includes stems, beams, and accidentals (sharps and naturals) for the notes. The piece concludes with 'V.S.' at the end of the final line.

87



91



Sfx

DJ Otzi - Hey Baby

♪ = 135,002563

78 **16**



DJ Otzi - Hey Baby

Brass

♩ = 135,002563

7

12

18

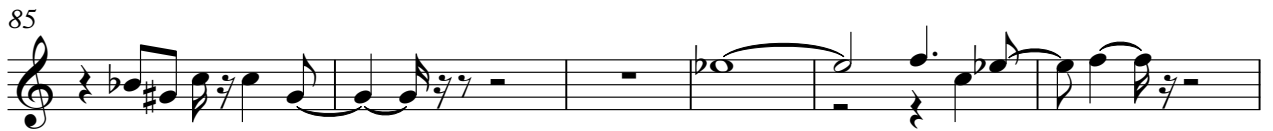
23

28

32

37

43



Voice ohh

DJ Otzi - Hey Baby

♩ = 135,002563

9 2

15 2 14

34 2 2

42 14 2

62 3 2

70 2 2

78 2

84 6 4

Applause

DJ Otzi - Hey Baby

♩ = 135,002563

A musical staff in 4/4 time. The first measure is filled with a thick black bar, with a '3' above it indicating a triplet. The second measure contains three notes, each with a slur underneath it. The staff has a double bar line at the beginning and end, and a single bar line between the two measures.

7

A musical staff with a double bar line at the beginning. The first measure has a slur underneath it. The second measure is filled with a thick black bar, with an '87' above it. The staff has a double bar line at the end.