

System of a down - Mr. Jack

♩ = 150,000000

John

Daron

Shavo

Serj

Pista 4

♩ = 150,000000

Daron

Shavo

Serj

Pista 4

7

John

Daron

Shavo

Serj

Pista 4



10

John

Daron

Shavo

Serj

13

John: Drum notation with 'x' marks for cymbals and notes for snare and bass drum.
Daron: Guitar tabs for two guitars (A and B) with fret numbers 8.
Shavo: Bass line with notes and rests.
Serj: Bass line with notes and rests.

16

John: Drum notation with 'x' marks for cymbals and notes for snare and bass drum.
Daron: Guitar tabs for two guitars (A and B) with fret numbers 1, 2, 0, 1, 1, 1, 1, 1, 1, 1, 1, 1, 1, 1, 1.
Shavo: Bass line with notes and rests.
Serj: Bass line with notes and rests.

19

John: Drum notation with 'x' marks for cymbals and notes for snare and bass drum.
Daron: Guitar tabs for two guitars (A and B) with fret numbers 3, 4, 3, 4, 3, 4, 3, 4, 3, 4, 3, 4, 3, 4, 3, 4, 5, 6, 5, 6, 5, 6, 5, 6.
Shavo: Bass line with notes and rests.
Serj: Bass line with notes and rests.

22

John

Daron

Shavo

Serj

25

John

Daron

Shavo

Serj

Pista 4

28

John

Daron

Shavo

Serj

Pista 4

31

John

Daron

Shavo

Serj

Pista 4

$\text{♩} = 165,000168$

35

John

Daron

Shavo

38

John

Daron

Shavo

41

John

Daron

Shavo

44

John

Daron

Shavo

47

John

Daron

Shavo

This system contains measures 47, 48, and 49. John's part features a steady eighth-note pattern in the first two measures, followed by a quarter rest in measure 48, and a quarter note in measure 49. Daron's guitar part includes TAB notation with fret numbers (0, 1, 3, 4) and string numbers (1, 2, 3, 4, 6). Shavo's bass line consists of eighth notes with sharps in measures 47 and 49, and a whole note in measure 48.

50

John

Daron

Shavo

This system contains measures 50, 51, and 52. John's part has a dotted quarter note in measures 50 and 52, and a quarter note in measure 51. Daron's guitar part features TAB notation with fret numbers (0, 1, 3, 4) and string numbers (1, 2, 3, 4, 6). Shavo's bass line has a whole note in measure 50, eighth notes with sharps in measure 51, and a whole note in measure 52.

53

John

Daron

Shavo

This system contains measures 53, 54, and 55. John's part has a quarter note in measures 53 and 55, and a dotted quarter note in measure 54. Daron's guitar part includes TAB notation with fret numbers (0, 1, 3, 4) and string numbers (1, 2, 3, 4, 6). Shavo's bass line consists of eighth notes with sharps in measures 53 and 55, and a whole note in measure 54.

56

John

Daron

Shavo

This system contains measures 56, 57, and 58. John's part has a dotted quarter note in measures 56 and 58, and a quarter note in measure 57. Daron's guitar part features TAB notation with fret numbers (0, 1, 3, 4) and string numbers (1, 2, 3, 4, 6). Shavo's bass line has a whole note in measure 56, eighth notes with sharps in measure 57, and a whole note in measure 58.

59

John: Drum notation with x's for cymbals and notes for snare and bass drum.

Daron: Tablature for guitar with strings T, A, B and fret numbers (0, 1, 3, 4, 6).

Shavo: Bass line with notes and accidentals (sharps and flats).

62

John: Drum notation with x's for cymbals and notes for snare and bass drum.

Daron: Tablature for guitar with strings T, A, B and fret numbers (0, 1, 3, 4, 6).

Shavo: Bass line with notes and accidentals (sharps and flats).

65

$\text{♩} = 165,000168$

John: Drum notation with x's for cymbals and notes for snare and bass drum.

Daron: Tablature for guitar with strings T, A, B and fret numbers (0, 1, 3, 4, 6).

Shavo: Bass line with notes and accidentals (sharps and flats).

68

John: Drum notation with x's for cymbals and notes for snare and bass drum.

Daron: Tablature for guitar with strings T, A, B and fret numbers (0, 1, 3, 4, 6).

Shavo: Bass line with notes and accidentals (sharps and flats).

71

John

Daron

Shavo

John's part: Drum notation with eighth notes.

Daron's part: Guitar tabs for T, A, and B. Measure 71: T (1 0 1 0), A (1 0 1 0), B (6 6, 4 3 4 3). Measure 72: T (0), A (0), B (3 3). Measure 73: T (1 0 1 0), A (1 0 1 0), B (6 6, 4 3 4 3).

Shavo's part: Bass line with eighth notes, key signature of one flat.

74

John

Daron

Shavo

John's part: Drum notation with eighth notes.

Daron's part: Guitar tabs for T, A, and B. Measure 74: T (0), A (0), B (3 3). Measure 75: T (1 0 1 0), A (1 0 1 0), B (6 6, 4 3 4 3). Measure 76: T (0), A (0), B (3 3).

Shavo's part: Bass line with eighth notes, key signature of one flat.

77

John

Daron

Shavo

John's part: Drum notation with eighth notes.

Daron's part: Guitar tabs for T, A, and B. Measure 77: T (1 0 1 0), A (1 0 1 0), B (6 6, 4 3 4 3). Measure 78: T (0), A (0), B (3 3). Measure 79: T (1 0 1 0), A (1 0 1 0), B (6 6, 4 3 4 3).

Shavo's part: Bass line with eighth notes, key signature of one flat.

80

John

Daron

Shavo

John's part: Drum notation with eighth notes.

Daron's part: Guitar tabs for T, A, and B. Measure 80: T (0), A (0), B (3 3). Measure 81: T (1 0 1 0), A (1 0 1 0), B (6 6, 4 3 4 3). Measure 82: T (0), A (0), B (3 3).

Shavo's part: Bass line with eighth notes, key signature of one flat.

83

John: Drum notation with x's for cymbals and notes for snare and bass drum.

Daron: Tablature for guitar with strings T, A, B and fret numbers (0, 1, 3, 4, 6).

Shavo: Bass line with notes and accidentals (sharps and flats).

86

John: Drum notation with x's for cymbals and notes for snare and bass drum.

Daron: Tablature for guitar with strings T, A, B and fret numbers (0, 1, 3, 4, 6).

Shavo: Bass line with notes and accidentals (sharps and flats).

89

$\text{♩} = 165,000168$

John: Drum notation with x's for cymbals and notes for snare and bass drum.

Daron: Tablature for guitar with strings T, A, B and fret numbers (0, 1, 3, 4, 6).

Shavo: Bass line with notes and accidentals (sharps and flats).

92

John: Drum notation with x's for cymbals and notes for snare and bass drum.

Daron: Tablature for guitar with strings T, A, B and fret numbers (0, 1, 3, 4, 6).

Shavo: Bass line with notes and accidentals (sharps and flats).

95

John

Daron

Shavo

98

John

Daron

Shavo

101

John

Daron

Shavo

104

John

Daron

Shavo

108

John

Daron

Shavo

0 3 3 3 | 0 0 0 1 0 | 3 2 2

3 3 3 3 3 3 3 3 3 | 3 3 3 3 | 3 3 3 3 3

111

Daron

Shavo

0 0 0 1 0 | 0 3 3 3 | 0 0 0 1 0

3 3 3 3 | 3 3 3 3 3 3 3 3 3 | 3 3 3 3

114

Daron

Shavo

3 2 2 | 0 0 0 1 0 | 0 3 3 3

3 3 3 3 3 | 3 3 3 3 | 3 3 3 3 3 3 3 3 3

117

Daron

Shavo

0 0 0 1 0 | 3 2 2 | 0 0 0 1 0

3 3 3 3 | 3 3 3 3 3 | 3 3 3 3

120

Daron

Shavo

0 3 3 3 | 0 0 0 1 0 | 3 2 2

3 3 3 3 3 3 3 3 3 | 3 3 3 3 | 3 3 3 3 3

Daron

T 0 0 0 1 0 | 0 3 3 3 | 0 0 0 1 0

A 3 3 3 3 | 3 3 3 3 3 3 3 3 3 | 3 3 3 3

B

Shavo

Daron

T 3 2 2 | 0 0 0 1 0 | 0 3 3 3

A 3 3 3 3 3 | 3 3 3 3 | 3 3 3 3 3 3 3 3 3

B

Shavo

Daron

T 0 0 0 1 0 | 3 2 2 | 0 0 0 1 0

A 3 3 3 3 | 3 3 3 3 3 | 3 3 3 3

B

Shavo

John

Daron

T 0 3 3 3 | 0 0 0 0 0 0 | 0 0 0

A 3 3 3 3 3 3 3 3 3 | 3 3 3 3 | 3 3 3 3 3 6

B 3 3 3 3 6 | 3 3 3 3 6 | 3 3 3 3 6

Shavo

John

Daron

T 1 0 1 | 0 | 0 0 | 1 0 1 | 0 0 0

A 1 0 1 | 0 | 0 0 | 1 0 1 | 0 0 0

B 6 4 3 4 3 | 3 3 | 3 3 6 6 4 3 4 | 3 3 3 3 3 6

Shavo

138

John

Daron

Shavo

141

John

Daron

Shavo

144

John

Daron

Shavo

147

John

Daron

Shavo

150

John

Daron

Shavo

153

John

Daron

Shavo

156

John

Daron

Shavo

159

John

Daron

Shavo

162

John

Daron

Shavo

165

John

Daron

Shavo

167

John

Daron

Shavo

John

System of a down - Mr. Jack

♩ = 150,000000
8

12

16

20

24

28

31

Detailed description: The image shows a guitar score for the song 'Mr. Jack' by System of a Down. It is written for a single guitar in 4/4 time with a tempo of 150,000,000. The score consists of seven staves of music. The first staff starts with a measure of a whole rest, followed by a measure of a quarter rest and a dotted quarter note, and then a series of measures with eighth-note patterns. The subsequent staves (12, 16, 20, 24, 28) continue this pattern. The final staff (31) concludes with a melodic line of quarter notes and a final whole rest.

2 $\text{♩} = 165,000168$

John

34

38

42

46

50

54

58

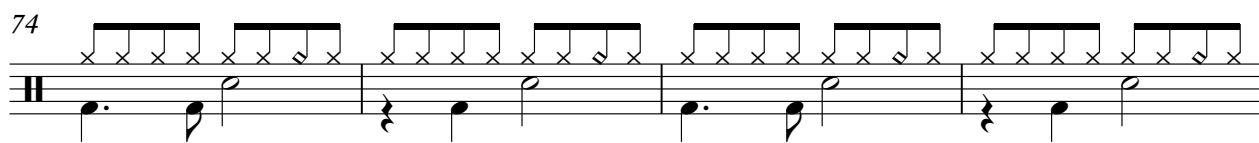
62

66 $\text{♩} = 165,000168$

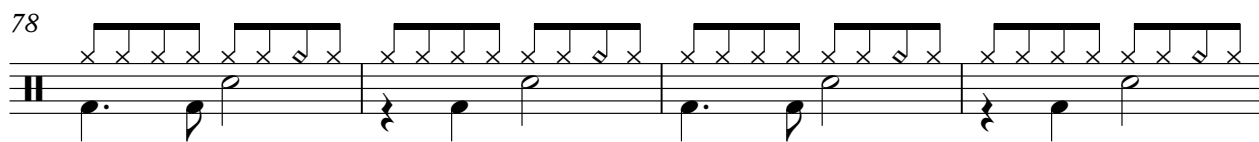
66

70

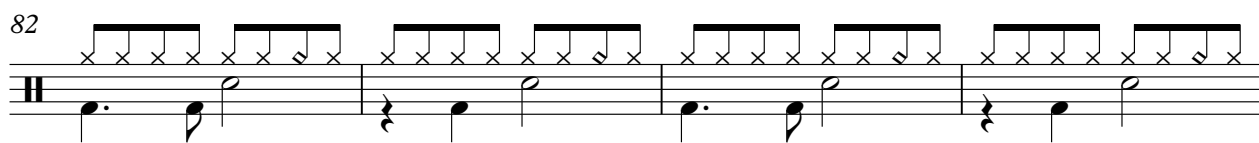
74



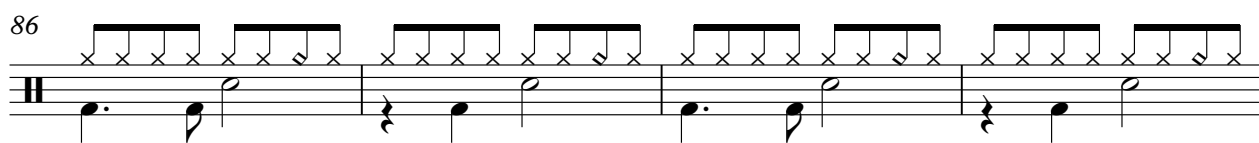
78



82



86



90

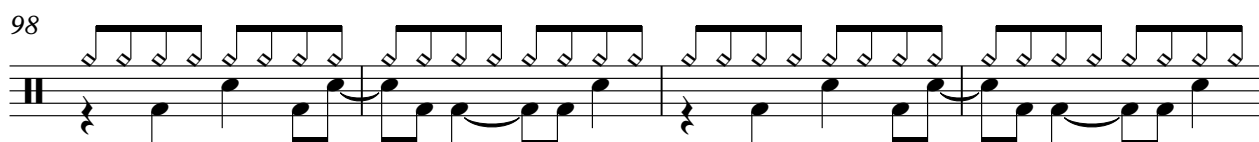
$\text{♩} = 165,000168$



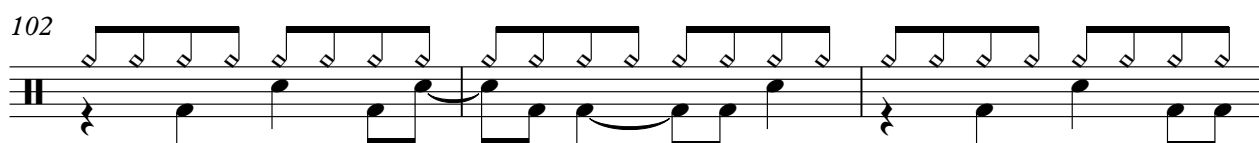
94



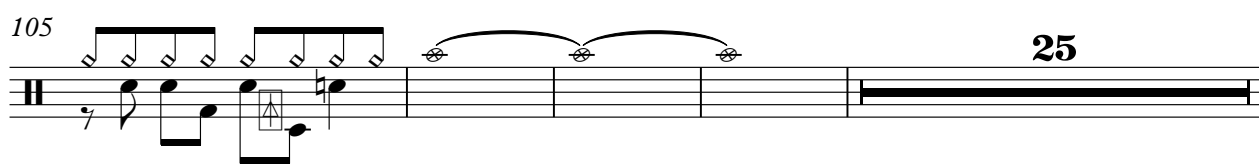
98



102



105



134

138

142

146

150

154

158

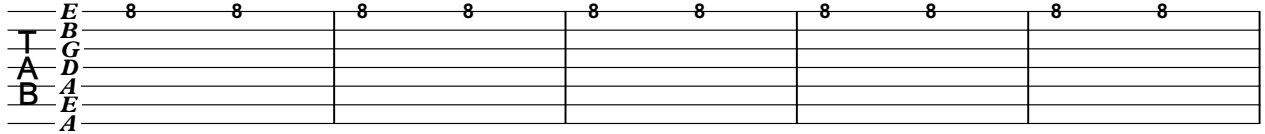
162

166

System of a down - Mr. Jack

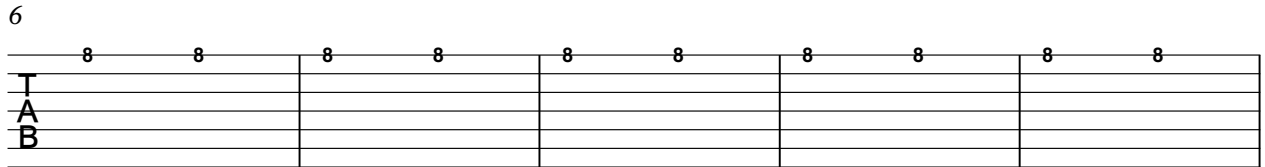
Daron

♩ = 150,000000



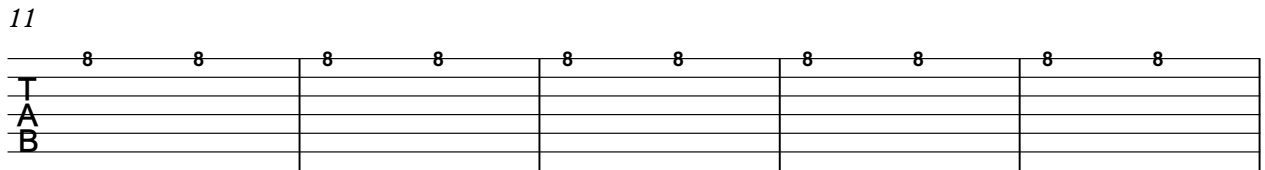
System 1: Five measures of guitar tablature. The top staff (E string) contains a sequence of eighth notes, each with the number '8' above it. The other four staves (B, G, D, A) are empty.

6



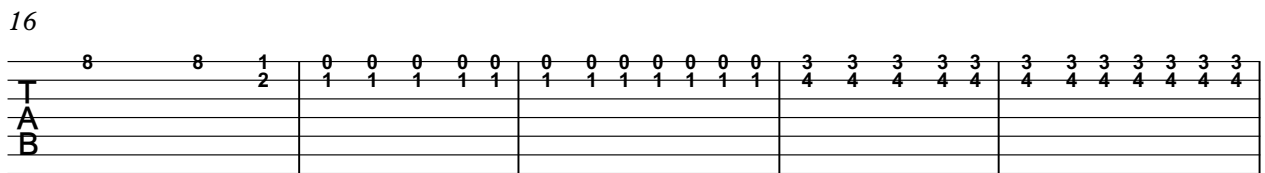
System 2: Five measures of guitar tablature. The top staff (E string) contains a sequence of eighth notes, each with the number '8' above it. The other four staves (B, G, D, A) are empty.

11



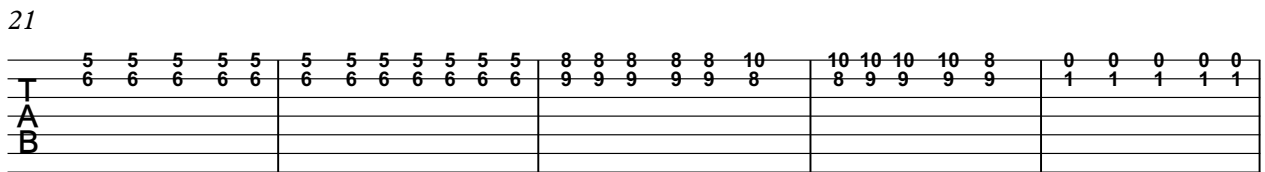
System 3: Five measures of guitar tablature. The top staff (E string) contains a sequence of eighth notes, each with the number '8' above it. The other four staves (B, G, D, A) are empty.

16



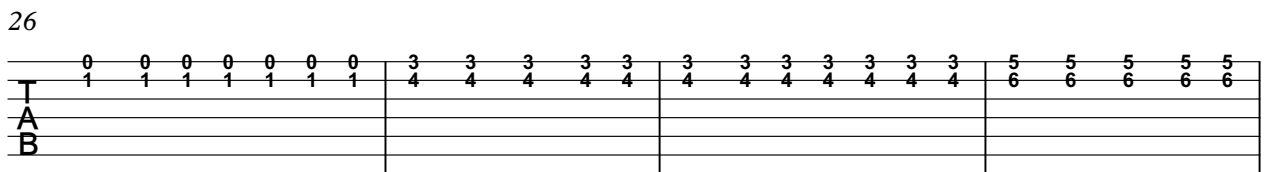
System 4: Five measures of guitar tablature. The top staff (E string) contains a sequence of notes: eighth notes with '8' above them, followed by a quarter note with '1' above and '2' below, then eighth notes with '0' above them, eighth notes with '3' above them, and eighth notes with '3' above them. The other four staves (B, G, D, A) are empty.

21



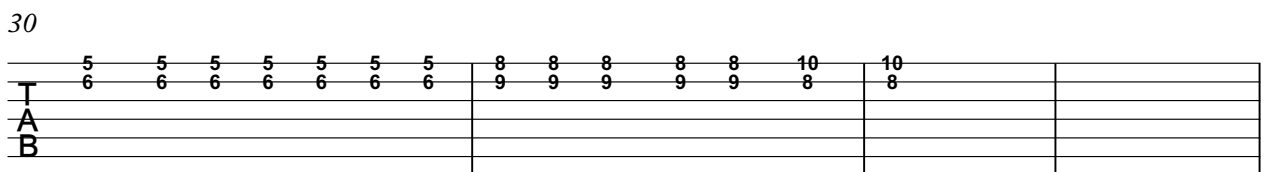
System 5: Five measures of guitar tablature. The top staff (E string) contains a sequence of notes: eighth notes with '5' above and '6' below, eighth notes with '5' above and '6' below, eighth notes with '5' above and '6' below, eighth notes with '5' above and '6' below, eighth notes with '5' above and '6' below, eighth notes with '5' above and '6' below, eighth notes with '5' above and '6' below, eighth notes with '8' above and '9' below, eighth notes with '8' above and '9' below, eighth notes with '8' above and '9' below, eighth notes with '10' above and '8' below, eighth notes with '10' above and '8' below, eighth notes with '10' above and '9' below, eighth notes with '10' above and '9' below, eighth notes with '8' above and '9' below, eighth notes with '0' above and '1' below, eighth notes with '0' above and '1' below, eighth notes with '0' above and '1' below, eighth notes with '0' above and '1' below. The other four staves (B, G, D, A) are empty.

26



System 6: Five measures of guitar tablature. The top staff (E string) contains a sequence of notes: eighth notes with '0' above and '1' below, eighth notes with '0' above and '1' below, eighth notes with '0' above and '1' below, eighth notes with '0' above and '1' below, eighth notes with '0' above and '1' below, eighth notes with '0' above and '1' below, eighth notes with '0' above and '1' below, eighth notes with '3' above and '4' below, eighth notes with '3' above and '4' below, eighth notes with '3' above and '4' below, eighth notes with '3' above and '4' below, eighth notes with '3' above and '4' below, eighth notes with '3' above and '4' below, eighth notes with '3' above and '4' below, eighth notes with '3' above and '4' below, eighth notes with '5' above and '6' below, eighth notes with '5' above and '6' below, eighth notes with '5' above and '6' below, eighth notes with '5' above and '6' below, eighth notes with '5' above and '6' below. The other four staves (B, G, D, A) are empty.

30



System 7: Five measures of guitar tablature. The top staff (E string) contains a sequence of notes: eighth notes with '5' above and '6' below, eighth notes with '5' above and '6' below, eighth notes with '5' above and '6' below, eighth notes with '5' above and '6' below, eighth notes with '5' above and '6' below, eighth notes with '5' above and '6' below, eighth notes with '5' above and '6' below, eighth notes with '8' above and '9' below, eighth notes with '8' above and '9' below, eighth notes with '8' above and '9' below, eighth notes with '8' above and '9' below, eighth notes with '8' above and '9' below, eighth notes with '10' above and '8' below, eighth notes with '10' above and '8' below. The other four staves (B, G, D, A) are empty.

2 $\text{♩} = 165,000168$

Daron

T	0	1 0 1 0	0	1 0 1 0	0	1 0 1 0
A	0	1 0 1 0	0	1 0 1 0	0	1 0 1 0
B	3	4 3 4 3	3	4 3 4 3	3	4 3 4 3

40

T	0	1 0 1 0	0	1 0 1 0	0	1 0 1 0
A	0	1 0 1 0	0	1 0 1 0	0	1 0 1 0
B	3	4 3 4 3	3	4 3 4 3	3	4 3 4 3

46

T	0	1 0 1 0	0	1 0 1 0	0	1 0 1 0
A	0	1 0 1 0	0	1 0 1 0	0	1 0 1 0
B	3	4 3 4 3	3	4 3 4 3	3	4 3 4 3

52

T	0	1 0 1 0	0	1 0 1 0	0	1 0 1 0
A	0	1 0 1 0	0	1 0 1 0	0	1 0 1 0
B	3	4 3 4 3	3	4 3 4 3	3	4 3 4 3

58

T	0	1 0 1 0	0	1 0 1 0	0	1 0 1 0
A	0	1 0 1 0	0	1 0 1 0	0	1 0 1 0
B	3	4 3 4 3	3	4 3 4 3	3	4 3 4 3

64

$\text{♩} = 165,000168$

T	0	1 0 1 0	0	1 0 1 0	0	1 0 1 0
A	0	1 0 1 0	0	1 0 1 0	0	1 0 1 0
B	3	4 3 4 3	3	4 3 4 3	3	4 3 4 3

70

T	0	1 0 1 0	0	1 0 1 0	0	1 0 1 0
A	0	1 0 1 0	0	1 0 1 0	0	1 0 1 0
B	3	4 3 4 3	3	4 3 4 3	3	4 3 4 3

76

T	0	1 0 1 0	0	1 0 1 0	0	1 0 1 0
A	0	1 0 1 0	0	1 0 1 0	0	1 0 1 0
B	3	4 3 4 3	3	4 3 4 3	3	4 3 4 3

82

T	0	1 0 1 0	0	1 0 1 0	0	1 0 1 0
A	0	1 0 1 0	0	1 0 1 0	0	1 0 1 0
B	3	4 3 4 3	3	4 3 4 3	3	4 3 4 3

88

$\text{♩} = 165,000168$

T	0	1 0 1 0	0	1 0 1 0	0	1 0 1 0
A	0	1 0 1 0	0	1 0 1 0	0	1 0 1 0
B	3	4 3 4 3	3	4 3 4 3	3	4 3 4 3

T											
A	0		1 0 1 0		0		1 0 1 0		0		1 0 1 0
B	0		1 0 1 0		0		1 0 1 0		0		1 0 1 0
	3		6		3		6		3		6
	3	3	6	4 3 4 3	3	3	6	4 3 4 3	3	3	6
	3		6		3		6		3		6

100

T											
A	0		1 0 1 0		0		1 0 1 0		0		1 0 1 0
B	0		1 0 1 0		0		1 0 1 0		0		1 0 1 0
	3		6		3		6		3		6
	3	3	6	4 3 4 3	3	3	6	4 3 4 3	3	3	6
	3		6		3		6		3		6

106

T		3 2 2		0		0 0 1 0		0		3 3 3		0		0 0 1 0	
A		3 3 3 3 3		3		3 3 3		3		3 3 3 3 3 3 3 3 3 3 3 3 3		3		3 3 3 3	
B															

110

T		3 2 2		0		0 0 1 0		0		3 3 3		0		0 0 1 0	
A		3 3 3 3 3		3		3 3 3		3		3 3 3 3 3 3 3 3 3 3 3 3 3		3		3 3 3 3	
B															

114

T		3 2 2		0		0 0 1 0		0		3 3 3		0		0 0 1 0	
A		3 3 3 3 3		3		3 3 3		3		3 3 3 3 3 3 3 3 3 3 3 3 3		3		3 3 3 3	
B															

118

T		3 2 2		0		0 0 1 0		0		3 3 3		0		0 0 1 0	
A		3 3 3 3 3		3		3 3 3		3		3 3 3 3 3 3 3 3 3 3 3 3 3		3		3 3 3 3	
B															

122

T		3 2 2		0		0 0 1 0		0		3 3 3		0		0 0 1 0	
A		3 3 3 3 3		3		3 3 3		3		3 3 3 3 3 3 3 3 3 3 3 3 3		3		3 3 3 3	
B															

126

T		3 2 2		0		0 0 1 0		0		3 3 3		0		0 0 1 0	
A		3 3 3 3 3		3		3 3 3		3		3 3 3 3 3 3 3 3 3 3 3 3 3		3		3 3 3 3	
B															

130

T		3 2 2		0		0 0 1 0		0		3 3 3		0		0 0 0 0 0	
A		3 3 3 3 3		3		3 3 3		3		3 3 3 3 3 3 3 3 3 3 3 3 3		3		3 3 3 3	
B															

134

T															
A		0 0 0		1 0 1		0		0 0		1 0 1		0		0 0 0	
B		0 0 0		1 0 1		0		0 0		1 0 1		0		0 0 0	
	3			6		6		6		6		6		6	
	3	3	3 3 3	6	6	4 3 4	3 3	3	3	3	6	6	4 3 4	3 3	3 3 3
	3			6		6		6		6		6		6	
	3			6		6		6		6		6		6	

V.S.

T	1 0 1	0	0 0	1 0 1	0 0 0	1 0 1	0
A	1 0 1	0	0 0	1 0 1	0 0 0	1 0 1	0
B	6 4 3 4 3 3 3	6 6 6 6 4 3 4	3 3 6 6 4 3 4	3 3 3 3 3 6	6 4 3 4 3 3 3	6 4 3 4 3 3 3	6 4 3 4 3 3 3

142

T	0 0	1 0 1	0 0 0	1 0 1	0	0 0	1
A	0 0	1 0 1	0 0 0	1 0 1	0	0 0	1
B	3 3 6 6 4 3 4	3 3 3 3 3 6	6 4 3 4 3 3 3	3 3 6 6 4			

146

T							
A							
B	3 3 3 4 3 4 3 3	3 3 3 3 3 3 3 4	3 4 3 3 3 3 3 3	3 3 3 4 3 4 3 3	3 3 3 4 3 4 3 3	3 3 3 4 3 4 3 3	3 3 3 4 3 4 3 3

150

T							
A							
B	3 3 3 3 3 3 3 4	3 4 3 3 3 3 3	3 3 3 4 3 4 3 3	3 3 3 4 3 4 3 3	3 3 3 4 3 4 3 3	3 3 3 4 3 4 3 3	3 3 3 4 3 4 3 3

154

T							
A							
B	3 4 3 3 3 3 3 3	3 3 3 4 3 4 3 3	3 3 3 3 3 3 3 4	3 3 3 3 3 3 3 4	3 4 3 3 3 3 3	3 4 3 3 3 3 3	3 4 3 3 3 3 3

158

T		0 0	1	0	0	1	0 0	1	0
A		0 0	1	0	0	1	0 0	1	0
B	3 3 3 3 3 6 6	6 4 3 3 3 3	3 6 6 6 4	3 3 3 3 3 6 6	3 3 3 3 3 6 6	6 4 3 3 3	6 6 6 6 4	6 4 3 3	6 6 6 6 4

163

T	0	1	0 0	1	0	0	1
A	0	1	0 0	1	0	0	1
B	3 6 6 4	3 3 6 6	6 4 3 3	6 4 3 3	3 6 6 4	3 6 6 4	3 6 6 4

167

T		0 0	1	0	0	1
A		0 0	1	0	0	1
B	3 3 6 6	6 4 3 3 3 3	3 6 6 6 4			

System of a down - Mr. Jack

Shavo

♩ = 150,000000

Measures 1-4 of the bass line for 'Mr. Jack' by System of a Down. The notation is in 4/4 time and features a complex, syncopated melody with many accidentals. The bass line consists of two staves: the upper staff contains the primary melodic line, and the lower staff contains a supporting bass line with a similar rhythmic pattern.

5

Measures 5-8 of the bass line. The notation continues the complex, syncopated melody from the previous system, maintaining the same two-staff structure.

9

Measures 9-12 of the bass line. The notation continues the complex, syncopated melody from the previous system, maintaining the same two-staff structure.

13

Measures 13-16 of the bass line. The notation continues the complex, syncopated melody from the previous system, maintaining the same two-staff structure.

17

Measures 17-20 of the bass line. The notation continues the complex, syncopated melody from the previous system, maintaining the same two-staff structure.

21

Measures 21-24 of the bass line. The notation continues the complex, syncopated melody from the previous system, maintaining the same two-staff structure.

25

Measures 25-28 of the bass line. The notation continues the complex, syncopated melody from the previous system, maintaining the same two-staff structure.

29

Measures 29-32 of the bass line. The notation concludes the piece with a final melodic phrase and a whole note rest in the upper staff, while the lower staff continues with a rhythmic pattern.

2

Shavo

$\text{♩} = 165,000168$



40



46



52



58



64

$\text{♩} = 165,000168$



70



76



82



88

$\text{♩} = 165,000168$



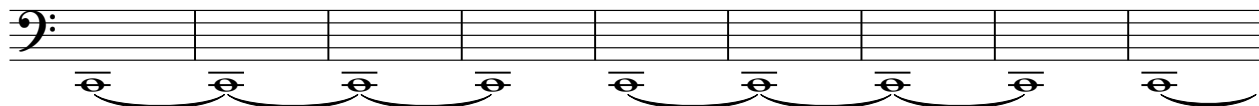
94



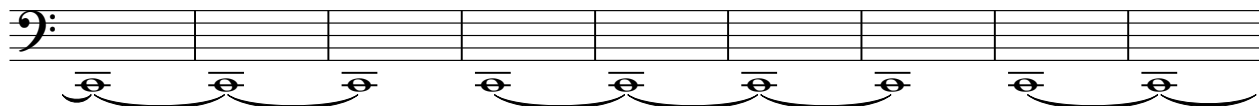
100



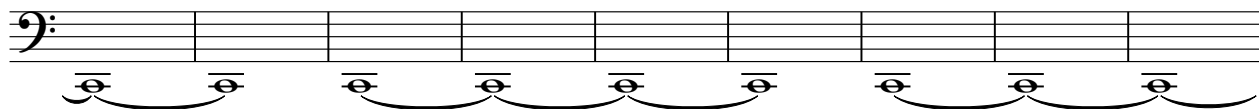
106



115



124



133



138



142



146



150



V.S.

154



158



162



166



System of a down - Mr. Jack

Serj

♩ = 150,000000

1 2 3 4 5 6 7 8 9

10

10 11 12 13 14 15 16 17 18

19

19 20 21 22 23 24 25 26 27

28

♩ = 165,000168

28 29 30 31

32

32

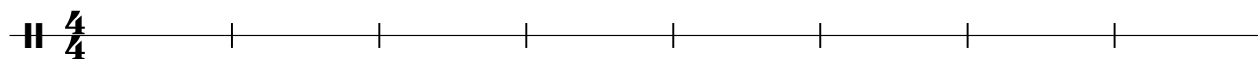
66

♩ = 165,000168

24

80

♩ = 150,000000



A musical staff with a 4/4 time signature. The staff has 8 vertical tick marks, dividing it into 8 equal parts.



Two pairs of notes, each pair connected by a slur. The notes are positioned above the staff.

9



9

16

2

A musical staff with a thick black bar from measure 9 to 24, and another thick black bar from measure 26 to 27. There are tick marks for measures 10, 11, 12, 13, 14, 15, 16, 17, 18, 19, 20, 21, 22, 23, 24, 25, 26, 27, 28, 29, 30, 31, 32.



Two rows of notes, each row containing four notes connected by a slur. The notes are positioned above and below the staff.

33

♩ = 165,000168

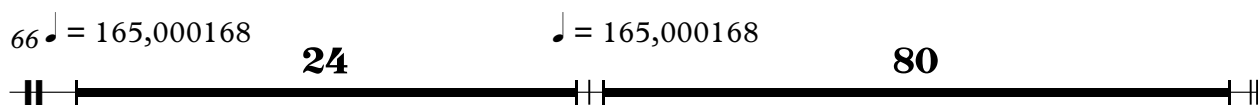


32

A musical staff with a thick black bar from measure 33 to 64. There are tick marks for measures 34, 35, 36, 37, 38, 39, 40, 41, 42, 43, 44, 45, 46, 47, 48, 49, 50, 51, 52, 53, 54, 55, 56, 57, 58, 59, 60, 61, 62, 63, 64.

66

♩ = 165,000168



24

♩ = 165,000168

80

A musical staff with thick black bars from measure 66 to 90 and from measure 92 to 172. There are tick marks for measures 67, 68, 69, 70, 71, 72, 73, 74, 75, 76, 77, 78, 79, 80, 81, 82, 83, 84, 85, 86, 87, 88, 89, 91, 93, 94, 95, 96, 97, 98, 99, 100, 101, 102, 103, 104, 105, 106, 107, 108, 109, 110, 111, 112, 113, 114, 115, 116, 117, 118, 119, 120, 121, 122, 123, 124, 125, 126, 127, 128, 129, 130, 131, 132, 133, 134, 135, 136, 137, 138, 139, 140, 141, 142, 143, 144, 145, 146, 147, 148, 149, 150, 151, 152.