

10bc - Jurassic Holiday

♩ = 222,000229

harpa



harpa

4

voz



harpa

7

voz



harpa

10

voz



harpa

13

voz

16

harpa

voz



19

clarineta

harpa

voz

choroE



22

clarineta

harpa

choroE

25

clarineta

harpa

choroE



28

flauta

clarineta

harpa

choroE

choroD

31

flauta

clarineta

harpa

choroE

choroD



34

flauta

clarineta

marimba

marimba2

harpa

voz

choroE

choroD

38

flauta

marimba

marimba2

voz

choroE



43

marimba

marimba2

voz



48

marimba

marimba2

voz

53

marimba

marimba2

voz



58

marimba

marimba2

voz



63

marimba

marimba2

voz

68

flauta

clarineta

marimba

marimba2

voz

choroE

choroD

Detailed description: This system contains measures 68 through 72. The flauta part has a melodic line with a slur over measures 70-71. The clarineta part has a similar melodic line with a slur over measures 70-71. The marimba part has a rhythmic pattern of eighth notes in measures 68-69, followed by rests. The marimba2 part has a rhythmic pattern of eighth notes in measures 68-69, followed by rests. The voz part has a sustained chord in measure 68, followed by rests. The choroE part has a sustained chord in measure 68, followed by a melodic line in measures 69-72. The choroD part has a sustained chord in measure 68, followed by a melodic line in measures 69-72.



73

flauta

clarineta

choroE

choroD

Detailed description: This system contains measures 73 through 76. The flauta part has a melodic line with a slur over measures 73-74. The clarineta part has a melodic line with a slur over measures 73-74. The choroE part has a sustained chord in measure 73, followed by a melodic line in measures 74-76. The choroD part has a sustained chord in measure 73, followed by a melodic line in measures 74-76.

78

flauta

clarineta

choroE

choroD



83

flauta

clarineta

choroE

choroD



88

flauta

clarineta

choroE

choroD

93

flauta

clarineta

choroE

choroD



98

flauta

clarineta

choroE

choroD



103

flauta

choroE

choroD

108

flauta

choroE

choroD

Detailed description: This system covers measures 108 to 112. The flute part (flauta) has rests in all five measures. The chorus E part (choroE) plays a steady eighth-note pattern. The chorus D part (choroD) plays a bass line with eighth notes and some rests.



113

flauta

choroE

choroD

Detailed description: This system covers measures 113 to 116. The flute part (flauta) begins with a melodic line in measure 113, featuring slurs and ties. The chorus E part (choroE) continues with eighth notes. The chorus D part (choroD) has a bass line with some long notes and ties.



117

flauta

marimba

choroE

choroD

Detailed description: This system covers measures 117 to 121. The flute part (flauta) has complex melodic lines with many slurs and ties. The marimba part (marimba) plays a rhythmic eighth-note pattern. The chorus E part (choroE) continues with eighth notes. The chorus D part (choroD) has a bass line with a long note in measure 121.

120

flauta

marimba

choroE

choroD



123

flauta

marimba

choroE

choroD



126

marimba

choroE

choroD

129

marimba

choroE

choroD

Measures 129-131. Marimba part in treble clef with eighth notes. Choro E part in alto clef with quarter notes. Choro D part in bass clef with a long note and a half note.



132

marimba

harpa

choroE

choroD

Measures 132-134. Marimba part in treble clef with eighth notes. Harpa part in treble clef with eighth notes. Choro E part in alto clef with quarter notes. Choro D part in bass clef with a long note and a half note.



135

harpa

choroE

choroD

Measures 135-137. Harpa part in treble clef with eighth notes. Choro E part in alto clef with quarter notes. Choro D part in bass clef with a long note and a half note.



138

harpa

Measure 138. Harpa part in treble clef with eighth notes.

flauta

10bc - Jurassic Holiday

♩ = 222,000229

28

35

30

70

78

87

96

3

106

5

116

122

17

Copyright © 2000 by Breno. All rights reserved.

clarineta

10bc - Jurassic Holiday

♩ = 222,000229

20

27

36

32

74

81

87

93

99

40

Copyright © 2000 by Breno. All rights reserved.

marimba

10bc - Jurassic Holiday

♩ = 222,000229

36

41

47

53

59

65

48

117

121

125

V.S.

2

marimba

129



132



9

marimba2

10bc - Jurassic Holiday

♩ = 222,000229

36

41

3

49

56

62

67

72

harpa

10bc - Jurassic Holiday

♩ = 222,000229



V.S.

Copyright © 2000 by Breno. All rights reserved.

2

harpa

37

96

Musical notation for harpa, measures 37-96. Measure 37 is a whole rest. Measures 38-96 contain a melodic line of eighth notes.

135

Musical notation for harpa, measures 135-137. Measures 135-137 contain a melodic line of eighth notes.

138

2

Musical notation for harpa, measures 138-139. Measure 138 contains a melodic line of eighth notes. Measure 139 is a whole rest.

10bc - Jurassic Holiday

VOZ

♩ = 222,000229

4

13

21

16

44

53

62

67

73

Copyright © 2000 by Breno. All rights reserved.

choroE 10bc - Jurassic Holiday

♩ = 222,000229

20

27

35

30

71

80

89

98

105

111

117

2

choroE

123



129



133



♩ = 222,000229

28

35

32

72

78

84

90

96

102

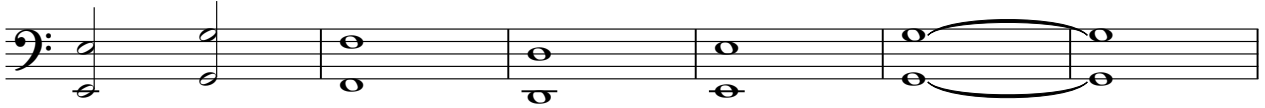
110

118

2

choroD

126



132

