

# Jazz Gitaar Trio's StandardsDiversen - Can't Help Falli

$\text{♩} = 75,000000$

DRUMS

JAZZ GTR

FRETLESS

3

DRUMS

JAZZ GTR

FRETLESS

4

DRUMS

JAZZ GTR

FRETLESS

5

DRUMS

JAZZ GTR

FRETLESS

6

DRUMS

JAZZ GTR

FRETLESS

8

DRUMS

JAZZ GTR

FRETLESS

9

DRUMS

JAZZ GTR

FRETLESS

11

DRUMS

JAZZ GTR

FRETLESS

13

DRUMS

JAZZ GTR

FRETLESS

15

DRUMS

JAZZ GTR

FRETLESS

16

DRUMS

JAZZ GTR

FRETLESS

17

DRUMS

JAZZ GTR

FRETLESS

18

DRUMS

JAZZ GTR

FRETLESS

19

DRUMS

JAZZ GTR

FRETLESS

21

DRUMS

JAZZ GTR

FRETLESS

22

DRUMS

JAZZ GTR

FRETLESS

23

DRUMS

JAZZ GTR

FRETLESS

25

DRUMS

JAZZ GTR

FRETLESS

27

DRUMS

JAZZ GTR

FRETLESS

29

DRUMS

JAZZ GTR

FRETLESS

31

DRUMS

JAZZ GTR

FRETLESS

32

DRUMS

JAZZ GTR

FRETLESS

33

DRUMS

JAZZ GTR

FRETLESS

34

DRUMS

JAZZ GTR

FRETLESS

6

35

DRUMS

JAZZ GTR

FRETLESS

36

DRUMS

JAZZ GTR

FRETLESS

37

DRUMS

JAZZ GTR

FRETLESS

38

DRUMS

JAZZ GTR

FRETLESS

39

DRUMS

JAZZ GTR

FRETLESS

40

DRUMS

JAZZ GTR

FRETLESS

41

DRUMS

JAZZ GTR

FRETLESS

42

DRUMS

JAZZ GTR

FRETLESS



43

DRUMS

JAZZ GTR

FRETLESS

44

DRUMS

JAZZ GTR

FRETLESS

45

DRUMS

JAZZ GTR

FRETLESS

46

DRUMS

JAZZ GTR

FRETLESS

47

DRUMS

JAZZ GTR

FRETLESS

48

DRUMS

JAZZ GTR

FRETLESS

49

DRUMS

JAZZ GTR

FRETLESS

50

DRUMS

JAZZ GTR

FRETLESS

51

DRUMS

JAZZ GTR

FRETLESS

52

DRUMS

JAZZ GTR

FRETLESS

54

DRUMS

JAZZ GTR

FRETLESS

55

DRUMS

JAZZ GTR

FRETLESS

57

DRUMS

JAZZ GTR

FRETLESS

This system covers measures 57 and 58.5. The drums part features a consistent pattern of eighth notes with 'x' marks above them, indicating a specific drum sound. The jazz guitar part is written in treble clef with a key signature of one flat (Bb). It includes a triplet of eighth notes in measure 58. The fretless bass part is in bass clef and provides a simple harmonic accompaniment.

58

DRUMS

JAZZ GTR

FRETLESS

This system covers measures 58.5 and 59.5. The drums continue with the eighth-note pattern. The jazz guitar part features a triplet of eighth notes in measure 59. The fretless bass part continues with its accompaniment.

59

DRUMS

JAZZ GTR

FRETLESS

This system covers measures 59.5 and 60.5. The drums part has a more complex pattern with some sixteenth notes. The jazz guitar part includes a triplet of eighth notes in measure 60. The fretless bass part continues with its accompaniment.

61

DRUMS

JAZZ GTR

FRETLESS

This system covers measures 60.5 and 61.5. The drums part continues with its pattern. The jazz guitar part includes a triplet of eighth notes in measure 61. The fretless bass part continues with its accompaniment.

62

DRUMS

JAZZ GTR

FRETLESS

63

DRUMS

JAZZ GTR

FRETLESS

65

DRUMS

JAZZ GTR

FRETLESS

67

DRUMS

JAZZ GTR

FRETLESS

68

DRUMS

JAZZ GTR

FRETLESS

69

DRUMS

JAZZ GTR

FRETLESS

70

DRUMS

JAZZ GTR

FRETLESS

71

DRUMS

JAZZ GTR

FRETLESS

DRUMS

Jazz Gitaar Trio`s StandardsDiversen - Can`t Help Falli

♩ = 75,000000

4

7

10

12

15

18

21

24

26

V.S.

## DRUMS

28

Measures 28-30: A consistent drum pattern featuring a steady eighth-note bass drum and snare drum accompaniment, with cymbal accents on the off-beats.

31

Measures 31-32: Measure 31 begins with a cymbal crash. The drum pattern continues with a steady eighth-note accompaniment, but the snare drum has a more active role in the second measure.

33

Measures 33-34: Continuation of the steady eighth-note drum pattern with cymbal accents.

35

Measures 35-36: Continuation of the steady eighth-note drum pattern with cymbal accents.

37

Measures 37-39: Measure 37 starts with a cymbal crash. The drum pattern changes in measure 38, featuring a more active snare drum and a different bass drum pattern.

40

Measures 40-41: Continuation of the steady eighth-note drum pattern with cymbal accents.

42

Measures 42-44: Continuation of the steady eighth-note drum pattern with cymbal accents.

45

Measures 45-47: Measure 45 starts with a cymbal crash. The drum pattern changes in measure 46, featuring a more active snare drum and a different bass drum pattern.

48

Measures 48-50: Continuation of the steady eighth-note drum pattern with cymbal accents.

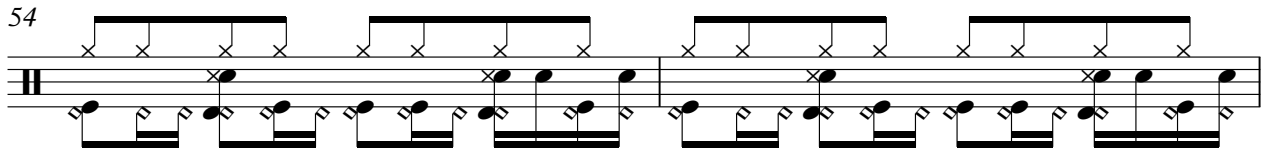
51

Measures 51-53: Measure 51 starts with a cymbal crash. The drum pattern changes in measure 52, featuring a more active snare drum and a different bass drum pattern.

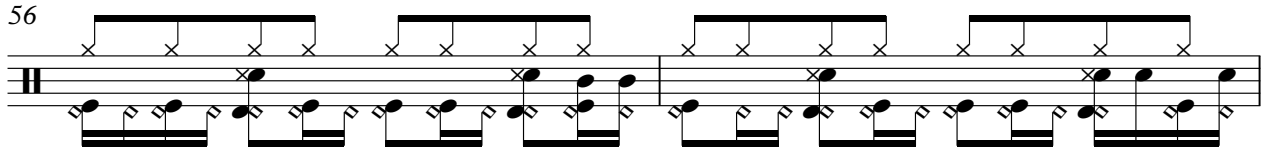


DRUMS

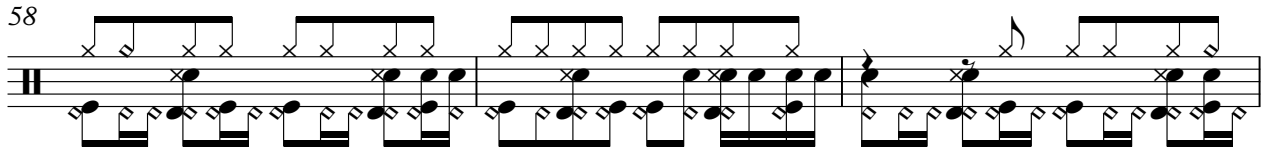
54



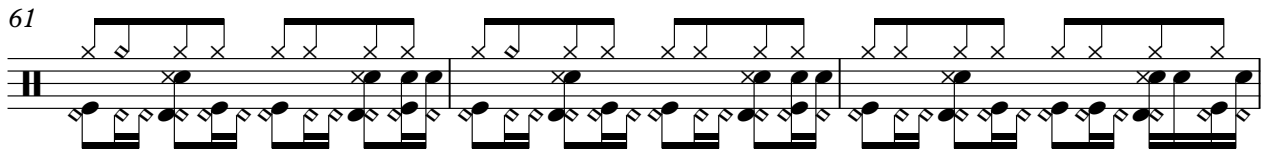
56



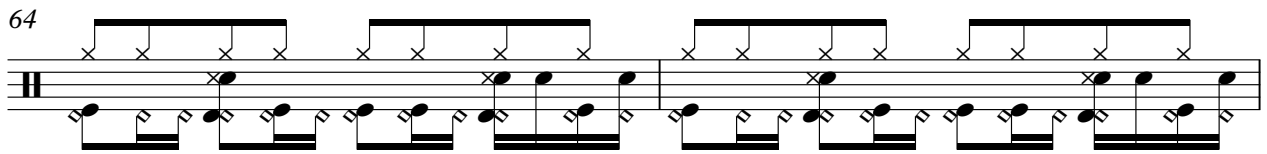
58



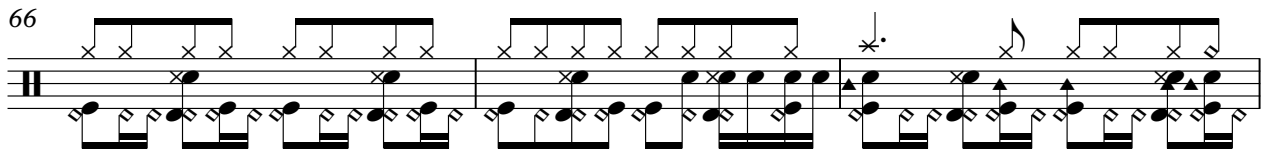
61



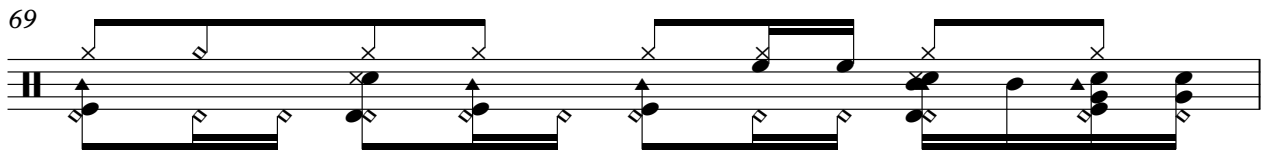
64



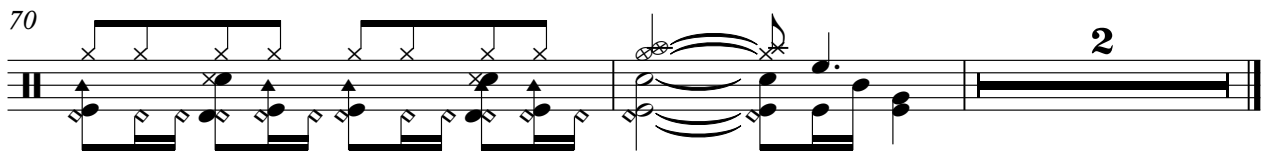
66



69



70



♩ = 75,000000

4

6

8

10

13

15

17

19

21

V.S.

23

25

28

30

32

33

34

35

36

37

The image displays ten staves of guitar sheet music, numbered 38 through 53. The music is written in a single system on a grand staff (treble clef). The notation includes various rhythmic patterns, slurs, and triplets. A key signature of one flat (B-flat) is indicated by a flat symbol on the first line of the first staff. The music is characterized by complex chordal textures and melodic lines. Notable features include:

- Staff 38: A series of sixteenth-note chords with a melodic line above.
- Staff 40: A melodic line with eighth-note patterns and a bass line with chords.
- Staff 42: A melodic line with eighth-note patterns and a bass line with chords.
- Staff 44: A melodic line with eighth-note patterns and a bass line with chords.
- Staff 45: A melodic line with eighth-note patterns and a bass line with chords.
- Staff 46: A melodic line with eighth-note patterns and a bass line with chords, featuring a triplet of eighth notes.
- Staff 48: A melodic line with eighth-note patterns and a bass line with chords, featuring a triplet of eighth notes.
- Staff 50: A melodic line with eighth-note patterns and a bass line with chords, featuring a triplet of eighth notes.
- Staff 51: A melodic line with eighth-note patterns and a bass line with chords, featuring a triplet of eighth notes.
- Staff 53: A melodic line with eighth-note patterns and a bass line with chords.

JAZZ GTR

55

57

59

61

63

65

67

69

70

♩ = 75,000000

5

9

13

18

23

28

33

38

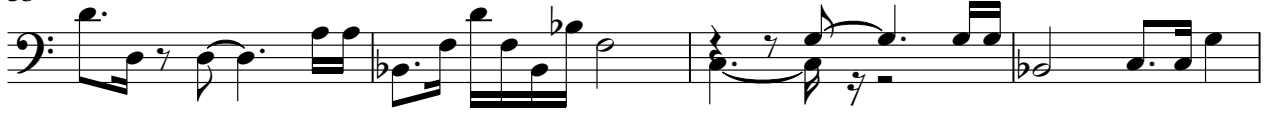
43

V.S.

48



53



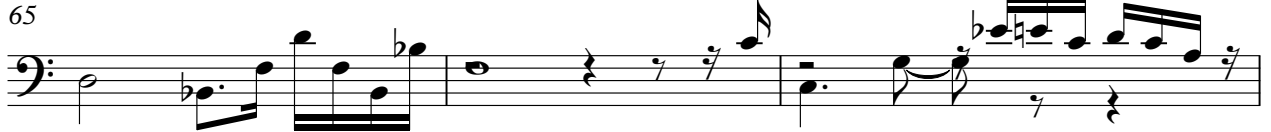
57



61



65



68



2