

Jazz Standards Diversen - SOLITUDE

♩ = 120,000000

DRUMS

Drum notation for the first system, showing a 4/4 time signature and rhythmic patterns with 'x' marks.

JAZZ GTR

Jazz guitar notation for the first system, showing a 4/4 time signature and chordal accompaniment.

ACOU BASS

Acoustic bass notation for the first system, showing a 4/4 time signature and a melodic line.

♩ = 120,000000

SLOWSTRING

Slow string notation for the first system, showing a 4/4 time signature and sustained notes.

A.PIANO 1

A. PIANO 1 notation for the first system, showing a 4/4 time signature and sustained notes.

A.PIANO 1

A. PIANO 1 notation for the second system, showing a 4/4 time signature and a melodic line.

6

DRUMS

JAZZ GTR

ACOU BASS

SLOWSTRING

A.PIANO 1

A.PIANO 1

9

DRUMS

JAZZ GTR

ACOU BASS

SLOWSTRING

A.PIANO 1

A.PIANO 1

11

DRUMS

JAZZ GTR

ACOU BASS

SLOWSTRING

A.PIANO 1

A.PIANO 1

13

DRUMS

JAZZ GTR

ACOU BASS

SLOWSTRING

A.PIANO 1

A.PIANO 1

15

DRUMS

JAZZ GTR

ACOU BASS

SLOWSTRING

A.PIANO 1

A.PIANO 1

17

DRUMS

JAZZ GTR

ACOU BASS

SLOWSTRING

A.PIANO 1

A.PIANO 1

19

DRUMS

JAZZ GTR

ACOU BASS

SLOWSTRING

A.PIANO 1

A.PIANO 1

21

DRUMS

JAZZ GTR

ACOU BASS

SLOWSTRING

A.PIANO 1

A.PIANO 1

23

DRUMS

JAZZ GTR

ACOU BASS

SLOWSTRING

A.PIANO 1

A.PIANO 1

25

DRUMS

JAZZ GTR

ACOU BASS

SLOWSTRING

A.PIANO 1

A.PIANO 1

27

DRUMS

JAZZ GTR

ACOU BASS

SLOWSTRING

A.PIANO 1

A.PIANO 1

29

DRUMS

JAZZ GTR

ACOU BASS

SLOWSTRING

A.PIANO 1

A.PIANO 1

31

DRUMS

JAZZ GTR

ACOU BASS

SLOWSTRING

A.PIANO 1

A.PIANO 1

34

DRUMS

JAZZ GTR

ACOU BASS

SLOWSTRING

A.PIANO 1

A.PIANO 1

36

DRUMS

JAZZ GTR

ACOU BASS

SLOWSTRING

A.PIANO 1

A.PIANO 1

38

DRUMS

JAZZ GTR

ACOU BASS

SLOWSTRING

A.PIANO 1

A.PIANO 1

41

DRUMS

JAZZ GTR

ACOU BASS

SLOWSTRING

A.PIANO 1

A.PIANO 1

43

DRUMS

JAZZ GTR

ACOU BASS

SLOWSTRING

A.PIANO 1

A.PIANO 1

45

DRUMS

JAZZ GTR

ACOU BASS

SLOWSTRING

A.PIANO 1

A.PIANO 1

47

DRUMS

JAZZ GTR

ACOU BASS

SLOWSTRING

A.PIANO 1

A.PIANO 1

50

DRUMS

JAZZ GTR

ACOU BASS

SLOWSTRING

A.PIANO 1

A.PIANO 1

52

DRUMS

JAZZ GTR

ACOU BASS

SLOWSTRING

A.PIANO 1

A.PIANO 1

54

DRUMS

JAZZ GTR

ACOU BASS

SLOWSTRING

A.PIANO 1

A.PIANO 1

56

DRUMS

JAZZ GTR

ACOU BASS

SLOWSTRING

A.PIANO 1

A.PIANO 1

58

DRUMS

JAZZ GTR

ACOU BASS

SLOWSTRING

A.PIANO 1

A.PIANO 1

60

DRUMS

JAZZ GTR

ACOU BASS

SLOWSTRING

A.PIANO 1

A.PIANO 1

62

DRUMS

JAZZ GTR

ACOU BASS

SLOWSTRING

A.PIANO 1

A.PIANO 1

64

DRUMS

JAZZ GTR

ACOU BASS

SLOWSTRING

A.PIANO 1

A.PIANO 1

66

DRUMS

JAZZ GTR

ACOU BASS

SLOWSTRING

A.PIANO 1

A.PIANO 1

68

DRUMS

JAZZ GTR

ACOU BASS

SLOWSTRING

A.PIANO 1

A.PIANO 1

71

The image displays a musical score for a jazz ensemble, starting at measure 71. The score is organized into six staves, each with a specific instrument label on the left:

- DRUMS:** The top staff uses a drum set notation with 'x' marks on a five-line staff to indicate hits on the snare, cymbals, and bass drum.
- JAZZ GTR:** The second staff is for a jazz guitar, written in treble clef. It features a melodic line with some chords and a 7th fret barre.
- ACOU BASS:** The third staff is for an acoustic bass, written in bass clef. It shows a walking bass line with eighth and quarter notes.
- SLOWSTRING:** The fourth staff is for a slow string section, written in treble clef. It contains sustained chords and melodic fragments.
- A.PIANO 1:** The fifth and sixth staves are for two different piano parts, both written in treble clef. The upper piano part features chords and melodic lines, while the lower piano part has a more rhythmic, eighth-note pattern.

Jazz StandardsDiversen - SOLITUDE

DRUMS

♩ = 120,000000

2

8

13

18

3

22

26

30

35

40

44

V.S.

DRUMS

48

Drum notation for measures 48-51. The notation consists of two staves: a top staff for the snare drum and a bottom staff for the bass drum. The snare drum part features a series of eighth notes with 'x' marks above them, indicating rimshots. The bass drum part features a series of eighth notes with stems pointing downwards.

52

Drum notation for measures 52-55. The notation consists of two staves: a top staff for the snare drum and a bottom staff for the bass drum. The snare drum part features a series of eighth notes with 'x' marks above them, indicating rimshots. The bass drum part features a series of eighth notes with stems pointing downwards.

56

Drum notation for measures 56-59. The notation consists of two staves: a top staff for the snare drum and a bottom staff for the bass drum. The snare drum part features a series of eighth notes with 'x' marks above them, indicating rimshots. The bass drum part features a series of eighth notes with stems pointing downwards. A triplet of eighth notes is indicated by a '3' below the bass drum staff in the third measure.

60

Drum notation for measures 60-63. The notation consists of two staves: a top staff for the snare drum and a bottom staff for the bass drum. The snare drum part features a series of eighth notes with 'x' marks above them, indicating rimshots. The bass drum part features a series of eighth notes with stems pointing downwards.

64

Drum notation for measures 64-67. The notation consists of two staves: a top staff for the snare drum and a bottom staff for the bass drum. The snare drum part features a series of eighth notes with 'x' marks above them, indicating rimshots. The bass drum part features a series of eighth notes with stems pointing downwards.

68

Drum notation for measures 68-70. The notation consists of two staves: a top staff for the snare drum and a bottom staff for the bass drum. The snare drum part features a series of eighth notes with 'x' marks above them, indicating rimshots. The bass drum part features a series of eighth notes with stems pointing downwards.

71

Drum notation for measure 71. The notation consists of two staves: a top staff for the snare drum and a bottom staff for the bass drum. The snare drum part features a series of eighth notes with 'x' marks above them, indicating rimshots. The bass drum part features a series of eighth notes with stems pointing downwards.

♩ = 120,000000

2

3

9

12

15

18

21

25

28

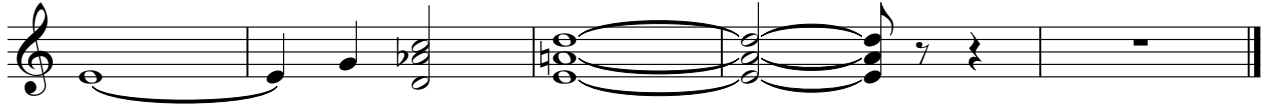
31

35

Detailed description: This image shows a guitar tablature for the jazz standard 'Solitude'. The music is written in 4/4 time with a tempo of 120 beats per minute. The key signature has one sharp (F#). The piece begins with a two-measure rest, followed by a melodic line starting on the second measure. The notation includes various chords, arpeggios, and melodic phrases. Measure numbers 2, 3, 9, 12, 15, 18, 21, 25, 28, 31, and 35 are indicated at the start of their respective lines. The piece concludes with a double bar line at the end of the 35th measure.



70



Jazz Standards Diversen - SOLITUDE

ACOU BASS

♩ = 120,000000

2

8

13

18

23

28

33

38

43

47

V.S.

52



56



60



65



69



Jazz StandardsDiversen - SOLITUDE

SLOWSTRING

♩ = 120,000000

2

8

15

22

30

36

43

50

56

62

V.S.

Jazz Standards Diversen - SOLITUDE

A.PIANO 1

♩ = 120,000000

2

9

15

21

27

33

39

45

51

57

V.S.

63

A musical staff in treble clef containing measures 63 through 68. The notation includes various chords and melodic lines. Measure 63 starts with a G4 quarter note and a B4 quarter note. Measure 64 has a G4 quarter note and a B4 quarter note. Measure 65 features a G4 quarter note and a B4 quarter note. Measure 66 has a G4 quarter note and a B4 quarter note. Measure 67 contains a G4 quarter note and a B4 quarter note. Measure 68 ends with a G4 quarter note and a B4 quarter note.

69

A musical staff in treble clef containing measures 69 through 74. The notation includes various chords and melodic lines. Measure 69 starts with a G4 quarter note and a B4 quarter note. Measure 70 has a G4 quarter note and a B4 quarter note. Measure 71 features a G4 quarter note and a B4 quarter note. Measure 72 has a G4 quarter note and a B4 quarter note. Measure 73 contains a G4 quarter note and a B4 quarter note. Measure 74 ends with a G4 quarter note and a B4 quarter note.

Jazz Standards Diversen - SOLITUDE

A.PIANO 1

♩ = 120,000000

8

15

21

26

31

37

44

51

57

V.S.

2

A.PIANO 1

62



68

