

Jim Reeves2 - Old Shep

0.0"
1.1,00
Old Shep...Written by Red Foley...Sung by Elvis Presley

♩ = 80,000000

Musical score for the first system of 'Old Shep'. The score includes five staves: Percussion, Jazz Guitar, Kora, Fretless Electric Bass, and Solo. The key signature is B-flat major (two flats) and the time signature is 4/4. The tempo is marked as ♩ = 80,000000. The Percussion staff shows a steady rhythm of eighth notes. The Jazz Guitar staff includes a guitar tab with fret numbers (1, 5, 6, 1, 1, 1, 1, 6, 1, 0, 1, 1, 1, 1, 1) and a treble clef staff with notes. The Kora staff shows chords and single notes. The Fretless Electric Bass staff shows a simple bass line. The Solo staff shows a melodic line with a slur over the first two measures.



Musical score for the second system of 'Old Shep', starting at measure 4. The score includes five staves: Perc. (Percussion), J. Gtr. (Jazz Guitar), J. Gtr. (Jazz Guitar), Kora, E. Bass (Electric Bass), and Solo. The key signature is B-flat major (two flats) and the time signature is 4/4. The Perc. staff shows a steady rhythm of eighth notes. The J. Gtr. staff includes a guitar tab with fret numbers (5, 1, 5, 1, 1, 5, 1, 1, 5, 5, 0, 1, 1, 1, 1) and a treble clef staff with notes. The Kora staff shows chords and single notes. The E. Bass staff shows a simple bass line. The Solo staff shows a melodic line with a slur over the first two measures.

6

Perc.

J. Gtr.

J. Gtr.

Kora

E. Bass

Syn. Str.



8

Perc.

J. Gtr.

J. Gtr.

Kora

E. Bass

Syn. Str.

11

Perc.

J. Gtr.

J. Gtr. T A B

Kora

E. Bass

Syn. Str.



13

Perc.

J. Gtr.

J. Gtr. T A B

Kora

E. Bass

Syn. Str.

16

Perc.

J. Gtr.

J. Gtr.

Kora

E. Bass

Syn. Str.



18

Perc.

J. Gtr.

J. Gtr.

Kora

E. Bass

Syn. Str.

20

Perc.

J. Gtr.

J. Gtr.
T
A
B

Kora

E. Bass

A.

Syn. Str.



23

Perc.

J. Gtr.

J. Gtr.
T
A
B

Kora

E. Bass

A.

26

Perc.

J. Gtr.

J. Gtr.

Kora

E. Bass

A.



29

Perc.

J. Gtr.

J. Gtr.

Kora

E. Bass

A.

32

Perc.

J. Gtr.

J. Gtr.
T
A
B

Kora

E. Bass

A.



35

Perc.

J. Gtr.

J. Gtr.
T
A
B

Kora

E. Bass

A.

37

Perc.

J. Gtr.

J. Gtr.

Kora

E. Bass

A.

Syn. Str.



39

Perc.

J. Gtr.

J. Gtr.

Kora

E. Bass

Syn. Str.

41

Perc.

J. Gtr.

J. Gtr.

T	1	0	1	0	0	1	0	0	0	0	0	0	0	0	0
A	3	3	3	3	3	3	3	1	1	1	1	3	3	1	1
B	3	3	3	3	3	3	3	1	3	3	1	3	1	3	3

Kora

E. Bass

Syn. Str.



43

Perc.

J. Gtr.

J. Gtr.

T	0	0	0	0	0	0	5	1	5	1	1	1	5	1
A	1	1	1	1	1	1	6	1	6	1	1	1	6	1
B	3	3	3	3	3	3	1	1	1	1	1	1	1	1

Kora

E. Bass

Syn. Str.

45

Perc.

J. Gtr.

J. Gtr.
T
A
B

Kora

E. Bass

Syn. Str.



47

Perc.

J. Gtr.

J. Gtr.
T
A
B

Kora

E. Bass

Syn. Str.

49

Perc.

J. Gtr.

J. Gtr. T A B

Kora

E. Bass

Syn. Str.



51

Perc.

J. Gtr.

J. Gtr. T A B

Kora

E. Bass

Syn. Str.

54

Perc.

J. Gtr.

J. Gtr.

Kora

E. Bass

A.



57

Perc.

J. Gtr.

J. Gtr.

Kora

E. Bass

A.

59

Perc.

J. Gtr.

J. Gtr.

Kora

E. Bass

A.



61

Perc.

J. Gtr.

J. Gtr.

Kora

E. Bass

A.

63

Perc.

J. Gtr.

J. Gtr.

Kora

E. Bass

A.



66

Perc.

J. Gtr.

J. Gtr.

Kora

E. Bass

A.

69

Perc.

J. Gtr.

J. Gtr.

Kora

E. Bass

A.

Syn. Str.



71

Perc.

J. Gtr.

J. Gtr.

Kora

E. Bass

Syn. Str.

73

Perc.

J. Gtr.

J. Gtr.
T
A
B

Kora

E. Bass

Syn. Str.



75

Perc.

J. Gtr.

J. Gtr.
T
A
B

Kora

E. Bass

Syn. Str.

77

Perc.

J. Gtr.

J. Gtr.

Kora

E. Bass

Syn. Str.



79

Perc.

J. Gtr.

J. Gtr.

Kora

E. Bass

Syn. Str.

81

Perc.

J. Gtr.

J. Gtr.

Kora

E. Bass

Syn. Str.



83

Perc.

J. Gtr.

J. Gtr.

Kora

E. Bass

Syn. Str.

85

Perc. J. Gtr. J. Gtr. Kora E. Bass A. Syn. Str.

Detailed description: This system contains measures 85 and 86. The Percussion part features a rhythmic pattern of eighth notes with 'x' marks above them. The J. Gtr. part has a melodic line with a triplet in measure 86. The J. Gtr. tab part shows fret numbers for both acoustic (A) and electric (B) guitars. The Kora part has a complex rhythmic pattern with many beamed notes. The E. Bass part has a simple bass line. The A. and Syn. Str. parts have sparse accompaniment.

87

Perc. J. Gtr. J. Gtr. Kora E. Bass A. Syn. Str.

Detailed description: This system contains measures 87 and 88. The Percussion part continues with the eighth-note pattern. The J. Gtr. part has a melodic line with a triplet in measure 87. The J. Gtr. tab part shows fret numbers for both acoustic (A) and electric (B) guitars. The Kora part has a complex rhythmic pattern with many beamed notes. The E. Bass part has a simple bass line. The A. and Syn. Str. parts have sparse accompaniment.

89

Perc.

J. Gtr.

J. Gtr.

Kora

E. Bass

A.

Syn. Str.



91

Perc.

J. Gtr.

J. Gtr.

Kora

E. Bass

A.

Syn. Str.

93

Perc.

J. Gtr.

T	0	0	0	0	0	0	0	1	5	6	1	1	1	1	1	5	6	1
A	1	1	1	1	1	1	1	3	1	1	1	1	1	1	1	1	1	1
B	1	1	1	1	1	1	1	1	1	1	1	1	1	1	1	1	1	1

Kora

E. Bass

A.

Syn. Str.

//

95

Perc.

J. Gtr.

T	2	1	1	1	1	0	2	0	1	1	0	0	0	1				
A	3	0	3	0	0	0	0	0	3	3	3	3	3	3	3	3	3	3
B	3	3	3	3	3	3	3	3	3	3	3	3	3	3	3	3	3	3

Kora

E. Bass

A.

Syn. Str.

97

Perc.

J. Gtr.

J. Gtr.

Kora

E. Bass

A.

Syn. Str.

99

Perc.

J. Gtr.

J. Gtr.

Kora

E. Bass

A.

Syn. Str.

102

Perc.

J. Gtr.

J. Gtr.

Kora

E. Bass

A.

Syn. Str.

105

Perc.

J. Gtr.

J. Gtr.

Kora

E. Bass

A.

Syn. Str.

==

108

Perc.

J. Gtr.

J. Gtr.

Kora

E. Bass

A.

Syn. Str.

110

Perc.

J. Gtr.

J. Gtr.

Kora

E. Bass

A.

Syn. Str.

112

Perc. 

J. Gtr. 

J. Gtr. 

Kora 

E. Bass 

A. 

Syn. Str. 



114

Perc. 

J. Gtr. 

J. Gtr. 

Kora 

E. Bass 

A. 

Syn. Str. 

116

Perc.

J. Gtr.

J. Gtr.

Kora

E. Bass

A.

Syn. Str.

117

Perc.

J. Gtr.

J. Gtr.

Kora

E. Bass

A.

Syn. Str.

Jim Reeves2 - Old Shep

Percussion

♩ = 80,000000

5

9

13

17

21

25

29

33

37

V.S.

41

Measure 41: A single staff with a treble clef and a key signature of one flat. The top staff contains a series of 'x' marks representing a drum pattern. The bottom staff contains a bass line with quarter notes and rests.

45

Measure 45: Similar to measure 41, but with a more complex drum pattern and a bass line featuring eighth notes and rests.

49

Measure 49: Similar to measure 41, but with a more complex drum pattern and a bass line featuring eighth notes and rests.

53

Measure 53: Similar to measure 41, but with a more complex drum pattern and a bass line featuring eighth notes and rests.

57

Measure 57: Similar to measure 41, but with a more complex drum pattern and a bass line featuring eighth notes and rests.

61

Measure 61: Similar to measure 41, but with a more complex drum pattern and a bass line featuring eighth notes and rests.

65

Measure 65: Similar to measure 41, but with a more complex drum pattern and a bass line featuring eighth notes and rests.

69

Measure 69: Similar to measure 41, but with a more complex drum pattern and a bass line featuring eighth notes and rests.

73

Measure 73: Similar to measure 41, but with a more complex drum pattern and a bass line featuring eighth notes and rests.

77

Measure 77: Similar to measure 41, but with a more complex drum pattern and a bass line featuring eighth notes and rests.

81

Musical notation for measure 81, featuring a drum staff with a series of 'x' marks and a bass staff with a rhythmic pattern of eighth and quarter notes.

85

Musical notation for measure 85, featuring a drum staff with a series of 'x' marks and a bass staff with a rhythmic pattern of eighth and quarter notes.

89

Musical notation for measure 89, featuring a drum staff with a series of 'x' marks and a bass staff with a rhythmic pattern of eighth and quarter notes.

93

Musical notation for measure 93, featuring a drum staff with a series of 'x' marks and a bass staff with a rhythmic pattern of eighth and quarter notes.

97

Musical notation for measure 97, featuring a drum staff with a series of 'x' marks and a bass staff with a rhythmic pattern of eighth and quarter notes.

101

Musical notation for measure 101, featuring a drum staff with a series of 'x' marks and a bass staff with a rhythmic pattern of eighth and quarter notes.

105

Musical notation for measure 105, featuring a drum staff with a series of 'x' marks and a bass staff with a rhythmic pattern of eighth and quarter notes.

109

Musical notation for measure 109, featuring a drum staff with a series of 'x' marks and a bass staff with a rhythmic pattern of eighth and quarter notes.

113

Musical notation for measure 113, featuring a drum staff with a series of 'x' marks and a bass staff with a rhythmic pattern of eighth and quarter notes.

116

Musical notation for measure 116, featuring a drum staff with a series of 'x' marks and a bass staff with a rhythmic pattern of eighth and quarter notes.

♩ = 80,000000

4

9

15

21

26

32

38

42

48

55

61

3

66

3

72

78

3

83

3

88

3

94

99

104

110

115

2

Jim Reeves2 - Old Shep

Jazz Guitar

♩ = 80,000000

5

8

11

14

17

21

24

27

31

V.S.

35

T	0	0	5	1	5	5	1	0	0	0	5	5	
A	1	1	1	1	6	3	1	1	1	1	1	6	1
B	1	1	1	1	1	1	1	1	1	1	1	1	1

39

T	2	2	2	1	1	1	1	1	1	0	0	0	0	0	0	0	0
A	0	0	0	0	0	0	0	0	0	0	0	0	0	0	0	0	0
B	3	3	3	3	3	3	3	3	3	3	3	3	3	3	3	3	3

43

T	0	0	0	0	0	0	5	5	5	1	1	5	1	5	5	1	5	1	
A	1	1	1	1	1	1	6	1	6	1	1	1	6	1	6	1	1	6	1
B	1	1	1	1	1	1	1	1	1	1	1	1	1	1	1	1	1	1	1

46

T	1	5	1	1	1	1	5	2	2	1	1	1	1	1	1	1	1	1
A	1	6	1	1	1	1	6	0	1	0	0	1	3	1	1	0	0	0
B	1	1	1	1	1	1	1	3	3	3	3	3	3	3	3	3	3	3

49

T	1	1	1	1	0	0	1	1	0	0	1	0	0	1	5	5	1	6	1
A	0	0	0	0	0	0	0	0	0	0	1	3	1	1	6	1	1	6	1
B	3	3	3	3	3	3	3	3	3	3	3	3	3	3	3	3	3	3	3

53

T	1	1	5	1	4	3	3	5	3	1	3	5	5						
A	1	1	1	1	1	1	1	1	6	1	6	1	6	1	1	1	1	1	1
B	1	1	1	1	1	6	6	6	6	6	6	6	6	6	6	6	6	6	6

57

T	1	5	1	1	1	1	1	1	1	5	5	2	2					
A	1	6	1	1	1	1	1	1	1	6	6	3	1	1	1	1	1	1
B	1	1	1	1	1	1	1	1	1	3	3	3	3	3	3	3	3	3

60

T	0	0	0	0	0	0	5	5	5	2	2	2						
A	1	1	1	1	1	1	3	3	3	0	0	0	0	0	0	0	0	0
B	1	1	1	1	1	1	1	1	1	1	1	1	1	1	1	1	1	1

64

T	1	1	1	1	1	1	1	1	0	0	1	0					
A	0	0	0	0	0	0	0	0	1	3	1	1	1	1	1	1	1
B	3	3	3	3	3	3	3	3	1	1	1	1	1	1	1	1	1

68

T	1	1	1	5	5	1	0	0	1	5	5	2	2					
A	0	0	0	6	6	3	1	1	1	6	1	1	1	1	1	1	1	1
B	1	1	1	1	1	1	3	3	3	3	3	3	3	3	3	3	3	3

72

72

T	1 1 1 1 1 1 1 1	1 1 1 1 0 0 1 1	0 0
A	0 0 0 0 0 0	0 0 0 0 0 0	1 3 3 3 1 3
B	3 3 3 3 3 3	3 3 3 3 3 3 3 3	1 1 1 1 1 1

75

75

T	0 0 0 0 0 0	5 5 5 5 5 5	5 5 5 5
A	1 1 1 1 1 1	6 1 6 1 1 1 6 1	6 1 6 1 1 1 6 1
B	3 3 3 3 3 3	1 1 1 1 1 1	1 1 1 1 1 1 1 1

78

78

T	1 6 1 1 1 1 6 1	0 1 0 0 1 3 2 1 1	1 0 1 0
A	1 1 1 1 1 1	3 3 3 3	3 3 3 3 3 3
B	1 1 1 1 1 1	3 3 3 3	3 3 3 3 3 3

81

81

T	1 1 1 1 1 1	0 0 1 3	0 1 0
A	0 0 0 0 0 0	1 1 1 3	1 1 1 1
B	3 3 3 3 3 3	1 3 0 0 3 4	1 3 3 1 3

84

84

T	1 6 1 1 1 1 6 1	1 6 1 1 1 4	3 3 5 3	3 3
A	1 1 1 1 1 1	1 1 1 1 1 1	1 1 1 1	6 6 6 6
B	1 1 1 1 1 1	1 1 1 1 1 1	6 6 6 6	6 6 6 6 6 6

88

88

T	1 6 1 1 1 1 6 1	5 5 1 1 5	1 6 1 1 1 1 6 1	2 2 2 2
A	1 1 1 1 1 1	3 0 3 0 0 0 0 0	1 1 1 1 1 1 1 1	0 0 0 0 0 0
B	1 1 1 1 1 1	1 1 1 1 1 1 1 1	1 1 1 1 1 1 1 1	5 5 5 5 5 5

92

92

T	0 0 0 0 0 0 0 0	0 0 0 0 0 0	1 6 1 1 1 1 6 1
A	3 1 1 1 1 1 3	1 1 1 1 1 1 1 1	1 1 1 1 1 1 1 1
B	1 3 3 3 3 3 3	1 1 1 1 1 1 1 1	1 1 1 1 1 1 1 1

95

95

T	2 1 1 1 2 1	1 1 1 1 1 1	1 1 0 1 0 0 1
A	3 0 3 0 0 0 0 0	3 3 3 3 3 3	3 3 3 3 3 3 1 3
B	3 3 3 3 3 3 3 3	3 3 3 3 3 3 3 3	3 3 3 3 3 3 1 3

99

99

T	0 0 0 0	1 5 5 1 0 0	1 6 1 1 1 1 6 1
A	1 1 1 1	0 0 1 4 1 1 1 1 1 1	1 6 1 1 1 1 6 1
B	3 3 3 3 3 3 3 3	1 1 1 1 1 1 1 1	1 1 1 1 1 1 1 1

103

103

T	1 0 0 2 0 0	0 0 0 0	1 5 3 0
A	2 4 4 2 4	1 3 3 3 3 1 3	1 0 1 6 0 4
B	2 2 4 2 2	1 1 1 1 1 1	1 1 1 1 5 5 5

V.S.

4
106

Jazz Guitar

T	5	5	5	5	1	1	0	0	0	0	0	0	0
A	6	6	6	3 6	0	0	1	1	1	1 1	1	1	1 1
B	5	0	5	0 0 5 0	3	3 3 3 3 3	1	3	3	3 3 3	3	3	3 3 3 3 1 1
	3	3	3	3 3 3	3	3 3 3 3 3	1	1	1	1	1	1 1	1 1 1 1

110

T	1	5	1	1	1	1	5	1	2	2	1	2	1	1	1	1	1	1	1
A	6	6	6	6	6	6	6	6	0	1	0	0	0	0	0	0	0	0	0
B	1	1	1	1	1	1	1	1	3	3	3	3	3	3	3	3	3	3	3

113

T	1	1	1	1	1	1	1	1	0	0	0	3	0	1	0	0	0		
A	0	0	0	0	0	0	0	0	1	1	1	3	1	3	1	1			
B	3	3	3	3	3	3	3	3	3	3	3	3	4	3	3	3	3	3	
	3	3	3	3	3	3	3	3	1	1	1	1	3	1	1	1	1	1	1

116

T	5	5	5	5	1	5	5	1	1	5	5	5	1	1	5	5
A	6	6	6	6	6	6	6	6	6	6	6	6	6	6	6	6
B	1	1	1	1	1	1	1	1	1	1	1	1	1	1	1	1

Jim Reeves2 - Old Shep

Kora

♩ = 80,000000

6

9

12

16

19

22

26

30

34

V.S.

38 *Nora*

43

46

50

53

57

60

64

68

70

Detailed description: This is a page of musical notation for guitar, consisting of ten staves of music. The music is written in a key signature of two flats (B-flat and E-flat) and a 3/4 time signature. The notation includes a variety of rhythmic patterns, such as eighth and sixteenth notes, and complex chordal textures with many beamed notes. The piece is titled 'Nora' and begins at measure 38. The staves are numbered 38, 43, 46, 50, 53, 57, 60, 64, 68, and 70, indicating the starting measure of each system. The music features intricate fingerings and dynamic markings, typical of a classical or contemporary guitar piece.

Musical score for Kora, measures 73-104. The score is written in a single system with ten staves. The key signature is three flats (B-flat, E-flat, A-flat) and the time signature is 3/4. The notation includes complex rhythmic patterns with many beamed notes and rests, characteristic of Kora music. Measure numbers 73, 76, 80, 84, 87, 90, 93, 96, 100, and 104 are indicated at the beginning of their respective staves. The piece concludes with a final measure containing a triplet of notes and the instruction 'V.S.' (Vivace).

109

3

This musical system contains measures 109 through 112. It features a treble clef and a key signature of two flats. The notation is primarily chordal, with many notes beamed together. A triplet of eighth notes is indicated by a bracket and the number '3' below it in the final measure.

113

This musical system contains measures 113 through 115. It continues the chordal style with beamed notes. The final measure of this system includes a triplet of eighth notes, marked with a bracket and the number '3' below it.

116

This musical system contains measures 116 through 118. It begins with a treble clef and a key signature of two flats. The notation includes a mix of chords and melodic lines. The system concludes with a double bar line.

♩ = 80,000000



8



14



20



26



31



37



43



49



55



V.S.

60



66



72



78



83



89



95



101



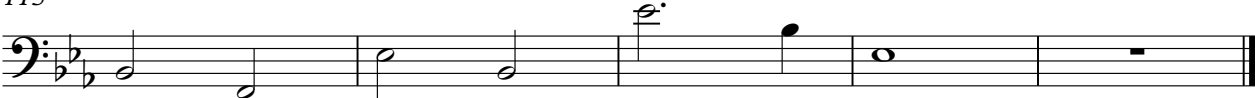
106



112



115



Jim Reeves2 - Old Shep

Alto

$\text{♩} = 80,000000$

21

27

34

55

63

70

91

98

105

113

16

16

2

Jim Reeves2 - Old Shep

Synth Strings

♩ = 80,000000

5

12

19 16

41

49 16

70

78

85

92

99

V.S.

2

Synth Strings

106

Musical notation for Synth Strings, measures 106-112. The notation is in a treble clef with a key signature of two flats (B-flat and E-flat). Measure 106 starts with a whole note chord of G2 and B2. Measure 107 has a whole note chord of G2 and B2. Measure 108 has a whole note chord of G2 and B2. Measure 109 has a whole note chord of G2 and B2. Measure 110 has a whole note chord of G2 and B2. Measure 111 has a whole note chord of G2 and B2. Measure 112 has a whole note chord of G2 and B2.

113

Musical notation for Synth Strings, measures 113-119. The notation is in a treble clef with a key signature of two flats (B-flat and E-flat). Measure 113 has a whole note chord of G2 and B2. Measure 114 has a whole note chord of G2 and B2. Measure 115 has a whole note chord of G2 and B2. Measure 116 has a whole note chord of G2 and B2. Measure 117 has a whole note chord of G2 and B2. Measure 118 has a whole note chord of G2 and B2. Measure 119 has a whole note chord of G2 and B2.

Solo

Jim Reeves2 - Old Shep

♩ = 80,000000

The first staff of music is in 4/4 time with a key signature of two flats (B-flat and E-flat). It begins with a whole rest. The melody consists of the following notes: G4 (quarter), A4 (quarter), B-flat4 (quarter), A4-G4 (beamed eighth notes), F4 (quarter), E-flat4 (quarter), D4 (quarter), C4 (quarter), B-flat4 (quarter), A4-G4 (beamed eighth notes), F4 (quarter), E-flat4 (quarter), D4 (quarter), and C4 (quarter). The final note is held for a full measure.

5

The second staff of music is in 4/4 time with a key signature of two flats. It begins with a whole rest. The melody consists of the following notes: G4 (quarter), A4 (quarter), B-flat4 (quarter), A4-G4 (beamed eighth notes), F4 (quarter), E-flat4 (quarter), D4 (quarter), C4 (quarter), B-flat4 (quarter), A4-G4 (beamed eighth notes), F4 (quarter), E-flat4 (quarter), D4 (quarter), and C4 (quarter). The final note is held for a full measure. The number 114 is printed at the end of the staff.