

ge - Whole lotta love

♩ = 87,000023
Back Vocal

DO AND TIGHTEN UP THE BELT FOR THE BENEFIT OF THE PEOPLE.

Percussion

Jazz Guitar

Electric Guitar

Electric Guitar

Electric Guitar

Electric Guitar

Electric Bass

Lead 3 (Calliope)

Lead 3 (Calliope)



J. Gtr.

E. Gtr.

E. Bass

(C) 1994 Tune 1000 Corporation ;Warner/Chappell Music Canada Ltd. Int'l rights secured
(C) 1994 Tune 1000 Corporation ;Warner/Chappell Music Canada Ltd. Int'l rights secured

Perc.

J. Gtr.

E. Gtr.

E. Bass

Lead 3



Perc.

J. Gtr.

E. Gtr.

E. Bass

Lead 3

9

Perc.

J. Gtr.

E. Gtr.

E. Bass

Lead 3



11

Perc.

J. Gtr.

E. Gtr.

E. Bass

Lead 3

Perc. 

J. Gtr. *I'mgonnagiveyoumylove. I'mgonnagiveyoumylove.* 

E. Gtr. 

E. Bass 

Lead 3 



15 

Perc. 

J. Gtr. *Oh, wannaholot ta love, wannaholot ta love,* 

E. Gtr. 

E. Gtr. 

E. Bass 

Lead 3 

Lead 3 

17

Perc.

J. Gtr.

E. Gtr.

E. Gtr.

E. Bass

Lead 3

Lead 3

an navholbt ta love, wannavholbt ta love.



19

Perc.

J. Gtr.

E. Gtr.

E. Gtr.

E. Bass

Lead 3

Lead 3

You've been learn ing and ba byl've been learn

21

Perc.

J. Gtr.

E. Gtr.

E. Bass

Lead 3

ing. All them good times, ba by, ba by, ve been



23

Perc.

J. Gtr.

E. Gtr.

E. Bass

Lead 3

dis cern ing. Way, way down inside,

25

Perc. 

J. Gtr. 

E. Gtr. 

E. Bass 

Lead 3 

ahon eyouneed it. I'mgonnagiveyoumylove, ah.



27

Perc. 

J. Gtr. 

E. Gtr. 

E. Bass 

Lead 3 

Lead 3 

I'mgonnagiveyoumylove, ah. Oh, wholot ta love,

29

Perc.

J. Gtr.

E. Gtr.

E. Gtr.

E. Bass

Lead 3

Lead 3

wannavholbot ta love, an navholbot ta love,



31

Perc.

J. Gtr.

E. Gtr.

E. Gtr.

E. Bass

Lead 3

Lead 3

wan navholbot ta love.

33 Perc. E. Gtr. E. Gtr.

35 Perc.

37 Perc.

39 Perc.

41 Perc.

43 Perc.

45 Perc. E. Gtr. E. Gtr. E. Gtr. E. Bass

10

47

Perc.

E. Gtr.

E. Gtr.

E. Gtr.

E. Bass

Detailed description: This musical score covers measures 47 and 48. The percussion part features a consistent rhythmic pattern of eighth notes with 'x' marks above them, indicating muted notes. The three electric guitar parts are in a key with one sharp (F#). The top guitar part has a melodic line with some grace notes. The middle guitar part plays a similar melodic line. The bottom guitar part provides a bass line with triplets in the second measure of measure 48. The electric bass part has a simple bass line.



49

Perc.

E. Gtr.

E. Gtr.

E. Gtr.

E. Bass

Lead 3

You been

Detailed description: This musical score covers measures 49 and 50. The percussion part continues with the same rhythmic pattern. The three electric guitar parts continue their melodic and bass lines. The top guitar part has a melodic line. The middle guitar part plays a similar melodic line. The bottom guitar part provides a bass line with triplets in the second measure of measure 50. The electric bass part has a simple bass line. A vocal line labeled 'Lead 3' is shown at the bottom, with the lyrics 'You been' appearing above the staff in measure 50.

51

Perc. *fool in', ba by, ve been drool in'. All*

J. Gtr.

E. Gtr.

E. Gtr.

E. Bass

Lead 3



53

Perc. *thgood times, ba by, I've been mis us in'.*

J. Gtr.

E. Gtr.

E. Bass

Lead 3

55

Perc.

J. Gtr.

E. Gtr.

E. Bass

Lead 3

Way, way down in side, I'ngonnagiveyoumy love. 6 6



57

Perc.

J. Gtr.

E. Gtr.

E. Bass

Lead 3

I'ngonna giveyou ev eryinch of my love. I'ngonnagiveyoumy love.

59

Perc.

J. Gtr.

E. Gtr.

E. Bass

Lead 3

Yeah, all right, let's go.

6 6



61

Perc.

J. Gtr.

E. Gtr.

E. Gtr.

E. Bass

Lead 3

Lead 3

Wannaholót ta love, wannaholót ta love,

63

Perc. 

J. Gtr. 

E. Gtr. 

E. Gtr. 

E. Bass 

Lead 3 

Lead 3 

annaholbot tåove, wannaholbot tåove.



66

Perc. 

E. Gtr. 

E. Gtr. 

Lead 3 

Way down in side, woman, you

71

Perc.

E. Gtr. need, yeah, love.

E. Bass

Lead 3

Detailed description: This system covers measures 71 to 75. The percussion part has a single note in measure 74 marked with an asterisk and a slur. The electric guitar part has lyrics 'need, yeah,' in measure 71 and 'love.' in measure 74. The electric bass and lead guitar parts feature a triplet of eighth notes in measure 71.



76

Perc.

J. Gtr.

E. Gtr.

E. Bass

Lead 3

Detailed description: This system covers measures 76 and 77. The percussion part has a rhythmic pattern of eighth notes in measure 76 and a triplet of eighth notes marked with an asterisk in measure 77. The jazz guitar, electric guitar, electric bass, and lead guitar parts all have a rhythmic pattern of eighth notes.



78

Perc.

J. Gtr.

E. Gtr.

E. Bass

Lead 3

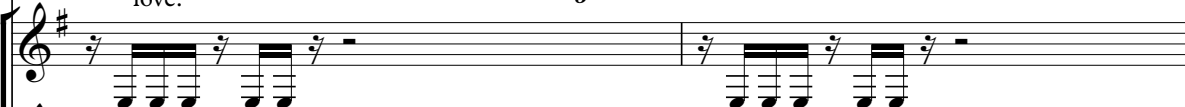
My, my, my, my, my, my, my, my


Detailed description: This system covers measures 78 to 81. The percussion part has a rhythmic pattern of eighth notes in measure 78 and a triplet of eighth notes marked with an asterisk in measure 79. The lyrics 'My, my, my, my, my, my, my, my' are written across measures 78 and 79. The jazz guitar, electric guitar, electric bass, and lead guitar parts all have a rhythmic pattern of eighth notes.

16

80

Perc. 

J. Gtr. 

E. Gtr. 


E. Bass 

Lead 3 

love. 6 6

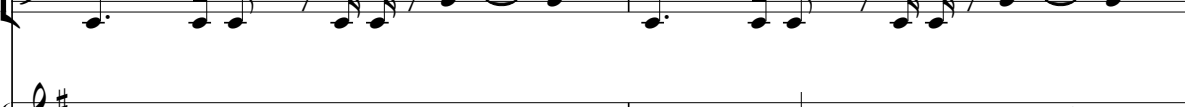


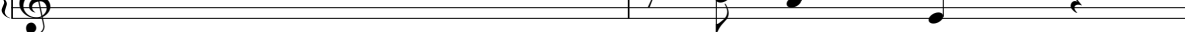
82

Perc. 

J. Gtr. 

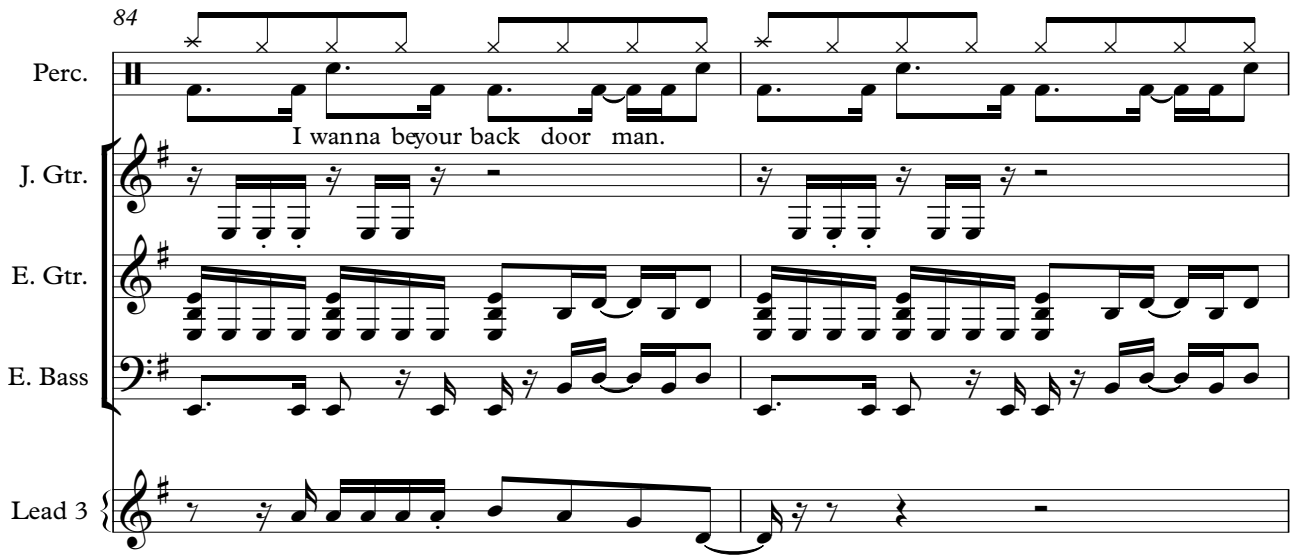
E. Gtr. 

E. Bass 

Lead 3 

Shake fone, girl,

84



Perc.

J. Gtr.

E. Gtr.

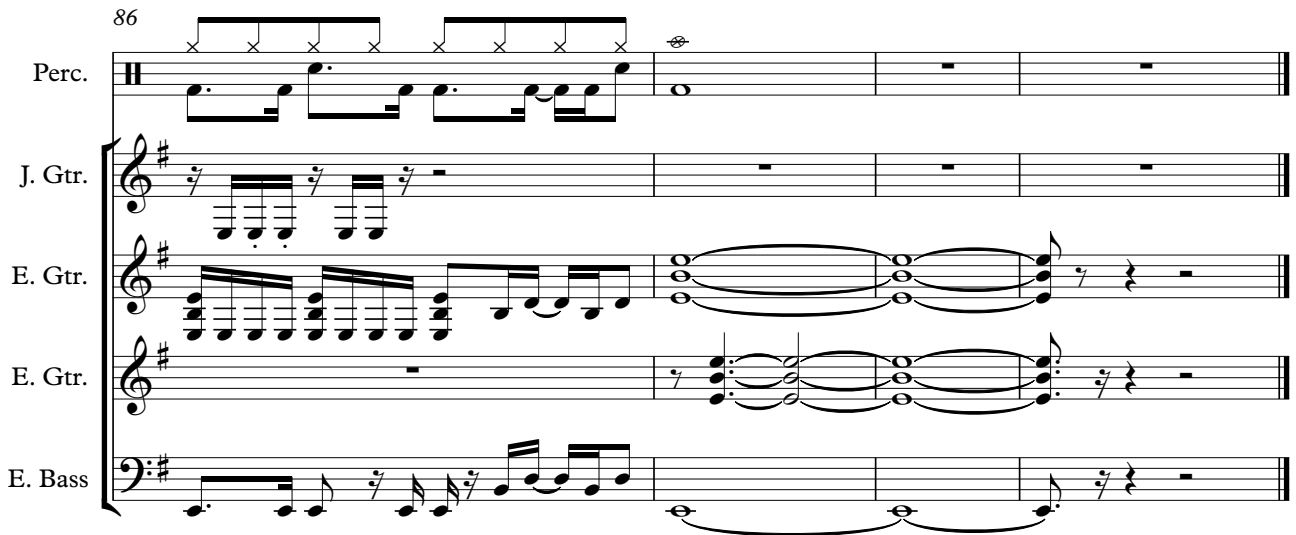
E. Bass

Lead 3

I wanna beyour back door man.



86



Perc.

J. Gtr.

E. Gtr.

E. Gtr.

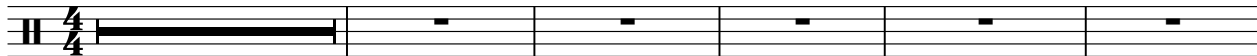
E. Bass

ole lotta love

Percussion

♩ = 87,000023

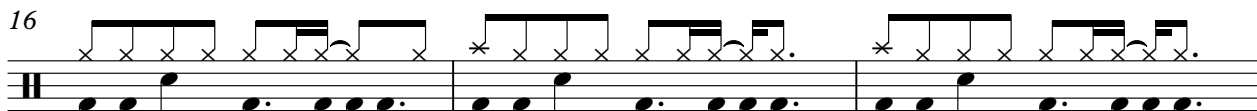
Back Vocal 5



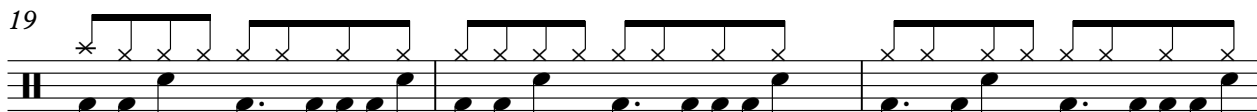
Oh, whole lotta love, whole lotta love, whole lotta love. You've been learning and baby you've been learning. All them



Way down inside, honey, honey. I'm giving you, ah, whole lotta love,



whole lotta love, whole lotta love, whole lotta love.



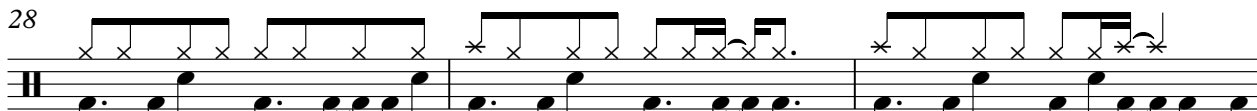
You've been learning and baby you've been learning. All them



good times, baby, baby, been discerning. Way, way down inside,



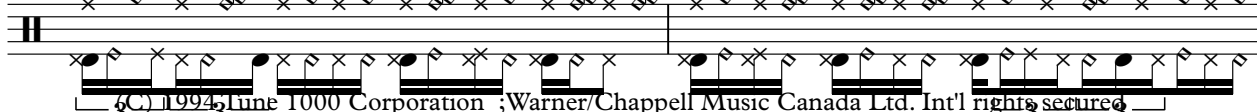
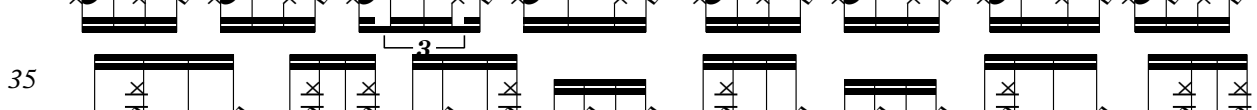
honey, honey. I'm giving you, ah, I'm giving you, ah.



Oh, whole lotta love, whole lotta love, whole lotta love,



whole lotta love.



© 1994 Tune 1000 Corporation ; Warner/Chappell Music Canada Ltd. Int'l rights secured
(C) 1994 Tune 1000 Corporation ; Warner/Chappell Music Canada Ltd. Int'l rights secured

V.S.

Percussion

37

39

41

43

44

46

48

50

52

55

You been fool in', ba b,vebeen
 drool in'. All the times ba by've beemis us in'.
 Way, waydownin side, Igomgiyony love. Igomgiyove in dhi love.

Percussion

58

I'gongiwomy love. Yeah, alright, let's go.

61

Wamholottdove, wamholove, annaholottdove,

64

wamholottdove. Way down inside, worm,

70

you need yeah, love.

77

My, mymy, my, my, my, my, my

80

love.

83

Shake fore, girl, I wamabour back door man.

85

ole lotta love
Jazz Guitar

♩ = 87,000023

2

5

8

11

14

17

20

23

26

29

(C) 1994 Tune 1000 Corporation ; Warner/Chappell Music Canada Ltd. Int'l rights secured
(C) 1994 Tune 1000 Corporation ; Warner/Chappell Music Canada Ltd. Int'l rights secured

V.S.

32 **19**

53

56

59

62 **12**

77

80

83

85 **3**

ole lotta love
Electric Guitar

♩ = 87,000023

4

6

8

10

12

14

16

18

20

(C) 1994 Tune 1000 Corporation ;Warner/Chappell Music Canada Ltd. Int'l rights secured
(C) 1994 Tune 1000 Corporation ;Warner/Chappell Music Canada Ltd. Int'l rights secured

V.S.

22

24

26

28

30

34

10

47

51

53

55

57

59

61

63

67

76

79

81

83

85

V.S.

87

Musical notation for electric guitar, measure 87. The staff is in treble clef with a key signature of one sharp (F#). The notation consists of a series of chords and notes: a four-note chord (F#, C#, G, D) on the first staff, a four-note chord (F#, C#, G, D) on the second staff, a four-note chord (F#, C#, G, D) on the third staff, a four-note chord (F#, C#, G, D) on the fourth staff, a quarter note (F#) on the fifth staff, a quarter note (C#) on the sixth staff, and a quarter note (G) on the seventh staff. The piece ends with a double bar line.

ole lotta love
Electric Guitar

♩ = 87,000023

15



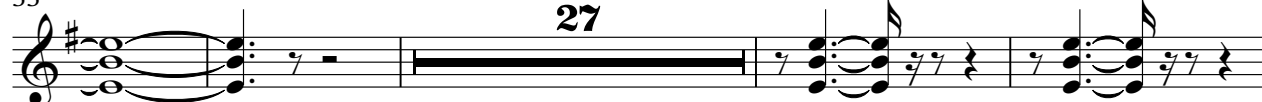
20

9



33

27



64



68

19



(C) 1994 Tune 1000 Corporation ;Warner/Chappell Music Canada Ltd. Int'l rights secured
(C) 1994 Tune 1000 Corporation ;Warner/Chappell Music Canada Ltd. Int'l rights secured

ole lotta love
Electric Guitar

♩ = 87,000023

44

46

49

51

38

(C) 1994 Tune 1000 Corporation ;Warner/Chappell Music Canada Ltd. Int'l rights secured
(C) 1994 Tune 1000 Corporation ;Warner/Chappell Music Canada Ltd. Int'l rights secured

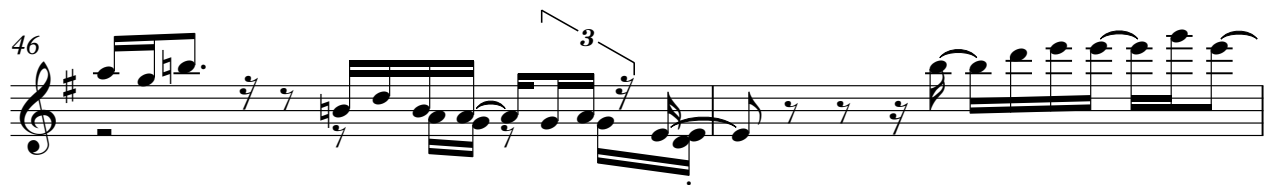
ole lotta love
Electric Guitar

♩ = 87,000023

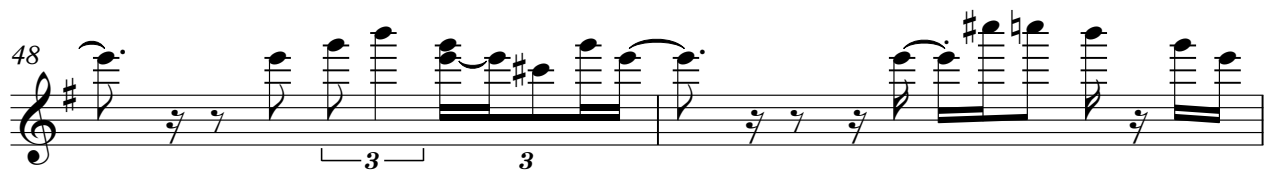
44



46

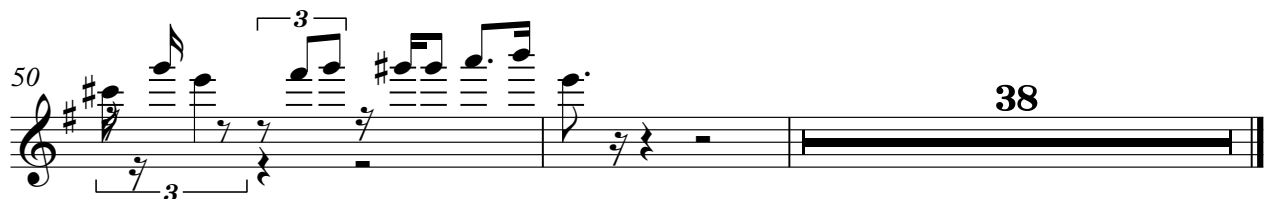


48



50

38



(C) 1994 Tune 1000 Corporation ;Warner/Chappell Music Canada Ltd. Int'l rights secured
(C) 1994 Tune 1000 Corporation ;Warner/Chappell Music Canada Ltd. Int'l rights secured

ole lotta love
Electric Bass

♩ = 87,000023



(C) 1994 Tune 1000 Corporation ;Warner/Chappell Music Canada Ltd. Int'l rights secured
(C) 1994 Tune 1000 Corporation ;Warner/Chappell Music Canada Ltd. Int'l rights secured

V.S.

27



29



31



46



50



53



56



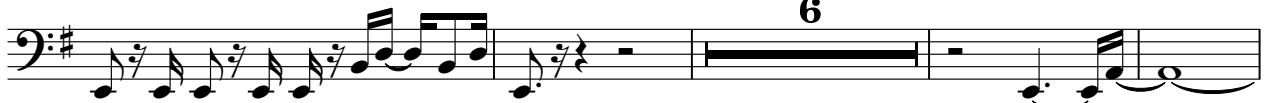
59



62



64



74



78



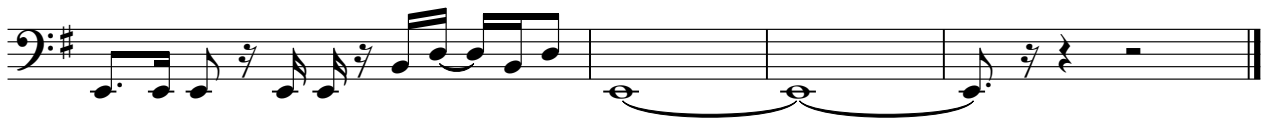
81



84



86



ole lotta love

Lead 3 (Calliope)

♩ = 87,000023

5

9

13

16

19

23

26

29

31

17

(C) 1994 Tune 1000 Corporation ;Warner/Chappell Music Canada Ltd. Int'l rights secured
(C) 1994 Tune 1000 Corporation ;Warner/Chappell Music Canada Ltd. Int'l rights secured

Lead 3 (Calliope)

50

53

56

59

62

65

70

77

83

