

Frankie Valli - Can't Take My Eyes Off Of You

♩ = 120,000000

Musical score for Trombone, Acc Bass, Fretless Bass, Synth Brass 2, and Strings. The score is in 4/4 time and features a tempo of 120,000000. The Trombone part is mostly silent. The Acc Bass and Fretless Bass parts play a rhythmic pattern of eighth notes. The Synth Brass 2 and Strings parts play a melodic line with a final grace note.

Musical score for Acc Bass, Fretless Bass, Synth Brass 2, and Strings. The score is in 4/4 time and features a tempo of 120,000000. The Acc Bass and Fretless Bass parts play a rhythmic pattern of eighth notes. The Synth Brass 2 and Strings parts play a melodic line with a final grace note. A measure number '5' is indicated at the start of the first staff.

9

This section of the score covers measures 9, 10, and 11. It features five staves: Trombone, Acc Bass, Fretless Bass, Synth Brass 2, and a combined Strings/Violin staff. The Trombone part consists of block chords in the bass clef. The Acc Bass and Fretless Bass parts play eighth-note triplets. The Synth Brass 2 and Strings parts play eighth-note triplets in the treble clef. The Violin part plays eighth-note triplets in the treble clef. Measure 11 ends with a double bar line.

12

This section of the score covers measures 12, 13, and 14. It features five staves: Trombone, Acc Bass, Fretless Bass, Synth Brass 2, and a combined Strings/Violin staff. The Trombone part consists of block chords in the bass clef. The Acc Bass part plays a sixteenth-note triplet in measure 12, followed by eighth-note triplets in measures 13 and 14. The Fretless Bass part plays eighth-note triplets. The Synth Brass 2 and Strings parts play eighth-note triplets in the treble clef. The Violin part plays eighth-note triplets in the treble clef. Measure 14 ends with a double bar line.

15 3

This section of the score covers measures 15, 16, and 17. It features five staves: Trombone, Acc Bass, Fretless Bass, Synth Brass 2, and Violin. The Trombone part has a measure rest in measure 15 and plays a triplet of eighth notes in measures 16 and 17. The Acc Bass and Fretless Bass parts play a rhythmic pattern of eighth notes with triplets in measures 16 and 17. The Synth Brass 2 and Violin parts play a melodic line with triplets in measures 16 and 17. The key signature has one flat (B-flat), and the time signature is 4/4.

Trombone

Acc Bass

Fretless Bass

Synth Brass 2

Violin

18

This section of the score covers measures 18, 19, and 20. It features five staves: Trombone, Acc Bass, Fretless Bass, Synth Brass 2, and Violin. The Trombone part has a measure rest in measure 18 and plays a triplet of eighth notes in measures 19 and 20. The Acc Bass and Fretless Bass parts play a rhythmic pattern of eighth notes with triplets in measures 19 and 20. The Synth Brass 2 and Violin parts play a melodic line with triplets in measures 19 and 20. The key signature has one flat (B-flat), and the time signature is 4/4.

Trombone

Acc Bass

Fretless Bass

Synth Brass 2

Violin

21

Trombone

Acc Bass

Fretless Bass

Synth Brass 2

Strings

Violin

Detailed description: This system of musical notation covers measures 21, 22, and 23. The Trombone part (bass clef) has rests in measures 21 and 23, and plays a melodic line in measure 22. The Acc Bass and Fretless Bass parts (bass clef) play a rhythmic pattern of eighth notes with triplets in measures 21 and 23. The Synth Brass 2, Strings, and Violin parts (treble clef) play a melodic line with triplets in measures 21 and 23, and a sustained chord in measure 22.

24

Trombone

Acc Bass

Fretless Bass

Synth Brass 2

Strings

Violin

Detailed description: This system of musical notation covers measures 24, 25, and 26. The Trombone part (bass clef) plays a melodic line in measure 24 and has rests in measures 25 and 26. The Acc Bass and Fretless Bass parts (bass clef) play a rhythmic pattern of eighth notes with triplets in measures 24 and 26. The Synth Brass 2, Strings, and Violin parts (treble clef) play a melodic line with triplets in measures 24 and 26, and a sustained chord in measure 25.

27 5

This system contains measures 27 and 28. The Trombone part has a whole rest in measure 27 and a whole note chord in measure 28. The Acc Bass and Fretless Bass parts play a rhythmic pattern of eighth notes in measure 27, followed by a triplet of eighth notes and a sixteenth note in measure 28. The Synth Brass 2 part has a rhythmic pattern of eighth notes in measure 27 and a triplet of eighth notes in measure 28. The Strings part has a rhythmic pattern of eighth notes in measure 27 and a triplet of eighth notes in measure 28. The Violin part has a whole rest in measure 27 and a whole note chord in measure 28.

Trombone

Acc Bass

Fretless Bass

Synth Brass 2

Strings

Violin

29

This system contains measures 29, 30, and 31. The Trombone part has a whole rest in measure 29, a whole note chord in measure 30, and a whole rest in measure 31. The Acc Bass and Fretless Bass parts play a rhythmic pattern of eighth notes in measure 29, followed by a triplet of eighth notes and a sixteenth note in measure 30, and a triplet of eighth notes in measure 31. The Synth Brass 2 part has a rhythmic pattern of eighth notes in measure 29, followed by a triplet of eighth notes and a sixteenth note in measure 30, and a triplet of eighth notes in measure 31. The Strings part has a rhythmic pattern of eighth notes in measure 29, followed by a triplet of eighth notes and a sixteenth note in measure 30, and a triplet of eighth notes in measure 31. The Violin part has a whole rest in measure 29, a whole note chord in measure 30, and a whole rest in measure 31.

Trombone

Acc Bass

Fretless Bass

Synth Brass 2

Strings

Violin

32

Trombone

Acc Bass

Fretless Bass

Synth Brass 2

Strings

Violin

35

Trombone

Acc Bass

Fretless Bass

Synth Brass 2

Strings

Violin

38

Trombone

Acc Bass

Fretless Bass

Synth Brass 2

Strings

Violin

Detailed description: This block contains the musical notation for measures 38, 39, and 40. The Trombone part is in the bass clef, starting with a whole note chord of F2, C3, and F3 in measure 38, followed by eighth notes in measure 39, and a quarter note chord of F2, C3, and F3 in measure 40. The Acc Bass and Fretless Bass parts play a rhythmic eighth-note pattern: Bb2, G2, F2, E2 in measure 38; Bb2, G2, F2, E2 in measure 39; and Bb2, G2, F2, E2 in measure 40. The Synth Brass 2, Strings, and Violin parts play a melodic line: G2 (quarter), A2 (quarter), Bb2 (quarter), C3 (quarter) in measure 38; G2 (quarter), A2 (quarter), Bb2 (quarter), C3 (quarter) in measure 39; and G2 (quarter), A2 (quarter), Bb2 (quarter), C3 (quarter) in measure 40. A triplet of eighth notes (G2, A2, Bb2) is marked in measures 39 and 40 for all three parts.

41

Acc Bass

Fretless Bass

Synth Brass 2

Strings

Detailed description: This block contains the musical notation for measures 41, 42, and 43. The Acc Bass and Fretless Bass parts play a rhythmic eighth-note pattern: Bb2, G2, F2, E2 in measure 41; Bb2, G2, F2, E2 in measure 42; and Bb2, G2, F2, E2 in measure 43. The Synth Brass 2 and Strings parts play a melodic line: G2 (quarter), A2 (quarter), Bb2 (quarter), C3 (quarter) in measure 41; G2 (quarter), A2 (quarter), Bb2 (quarter), C3 (quarter) in measure 42; and G2 (quarter), A2 (quarter), Bb2 (quarter), C3 (quarter) in measure 43. A triplet of eighth notes (G2, A2, Bb2) is marked in measures 41 and 42 for both parts.

44

Acc Bass

Fretless Bass

Synth Brass 2

Strings

47

Trombone

Acc Bass

Fretless Bass

Synth Brass 2

Strings

Violin

51

Trombone

Acc Bass

Fretless Bass

Synth Brass 2

Strings

Violin

54

Trombone

Acc Bass

Fretless Bass

Synth Brass 2

Strings

Violin

57

Trombone

Acc Bass

Fretless Bass

Synth Brass 2

Strings

Violin

Detailed description: This system of musical notation covers measures 57 to 60. The Trombone part (bass clef) starts with a whole rest in measure 57, followed by a series of eighth notes in measures 58 and 59, and a quarter note in measure 60. The Acc Bass and Fretless Bass parts (bass clef) play a consistent eighth-note pattern throughout. The Synth Brass 2, Strings, and Violin parts (treble clef) feature block chords in measures 57 and 58, followed by a melodic line in measure 59, and a final chord in measure 60. The Violin part has a whole rest in measure 57.

60

Trombone

Acc Bass

Fretless Bass

Synth Brass 2

Strings

Violin

Detailed description: This system of musical notation covers measures 60 to 63. The Trombone part (bass clef) continues with eighth notes. The Acc Bass and Fretless Bass parts (bass clef) continue with their eighth-note pattern. The Synth Brass 2, Strings, and Violin parts (treble clef) continue with their melodic and chordal patterns. The Violin part has a whole rest in measure 60.

63 11

Trombone

Acc Bass

Fretless Bass

Synth Brass 2

Strings

Violin

67

Trombone

Acc Bass

Fretless Bass

Synth Brass 2

Strings

Violin

69

Trombone

Acc Bass

Fretless Bass

Synth Brass 2

Strings

Violin

72

Trombone

Acc Bass

Fretless Bass

Synth Brass 2

Strings

Violin

75

Trombone

Acc Bass

Fretless Bass

Synth Brass 2

Strings

Violin

78

Trombone

Acc Bass

Fretless Bass

Synth Brass 2

Strings

Violin

81

Trombone

Acc Bass

Fretless Bass

Synth Brass 2

Strings

Violin

84

Acc Bass

Fretless Bass

Synth Brass 2

Strings

87

Acc Bass

Fretless Bass

Synth Brass 2

Strings

91

Trombone

Acc Bass

Fretless Bass

Synth Brass 2

Strings

Violin

94

Trombone

Acc Bass

Fretless Bass

Synth Brass 2

Strings

Violin

Detailed description: This system of musical notation covers measures 94, 95, and 96. The Trombone part (bass clef) features a melodic line with slurs and accidentals (flats and a sharp). The Acc Bass and Fretless Bass parts (bass clef) play a rhythmic pattern of eighth notes. The Synth Brass 2, Strings, and Violin parts (treble clef) play a complex, multi-layered texture with various rhythmic values and accidentals.

97

Trombone

Acc Bass

Fretless Bass

Synth Brass 2

Strings

Violin

Detailed description: This system of musical notation covers measures 97, 98, and 99. The Trombone part (bass clef) has a melodic line in measure 97, followed by rests in measures 98 and 99. The Acc Bass and Fretless Bass parts (bass clef) continue with their rhythmic eighth-note patterns. The Synth Brass 2, Strings, and Violin parts (treble clef) continue with their complex textures, including rests in measure 98.

100

Trombone

Acc Bass

Fretless Bass

Synth Brass 2

Strings

Violin

103

Trombone

Acc Bass

Fretless Bass

Synth Brass 2

Strings

Violin

106

Trombone

Acc Bass

Fretless Bass

Synth Brass 2

Strings

Violin

Detailed description: This page of a musical score, numbered 18, contains six staves. The Trombone staff (top) starts with a dynamic marking of 106 and a fermata, followed by three notes on a high staff. The Acc Bass and Fretless Bass staves (middle) play a rhythmic pattern of eighth notes, with the Fretless Bass mirroring the Acc Bass. The Synth Brass 2 and Strings staves (lower middle) play a melodic line with chords and a fermata. The Violin staff (bottom) has a whole note followed by a fermata and then three notes.

Frankie Valli - Can't Take My Eyes Off Of You

Trombone

♩ = 120,000000

7

12

17

22

27

32

37

9

Detailed description: This musical score is for the Trombone part of 'Can't Take My Eyes Off Of You' by Frankie Valli. It is written in 4/4 time with a tempo of 120,000000. The score consists of seven systems of music, each starting with a measure number (7, 12, 17, 22, 27, 32, 37). The notation is primarily in the bass clef. It features several triplet and sextuplet patterns, indicated by brackets and the numbers 3 and 6. The first system (measures 7-11) starts with a whole rest followed by a triplet of eighth notes. The second system (measures 12-16) begins with a sextuplet of eighth notes. The third system (measures 17-21) contains three triplet patterns. The fourth system (measures 22-26) includes two triplet patterns. The fifth system (measures 27-31) features a sextuplet followed by two triplet patterns. The sixth system (measures 32-36) contains two triplet patterns. The seventh system (measures 37-41) starts with two triplet patterns and ends with a whole rest.

2

50 *Trombone*

54

59

63

68

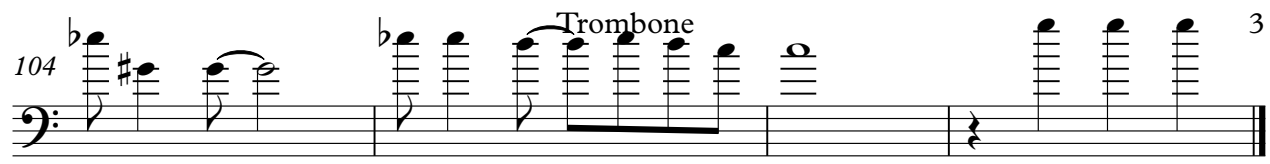
73

78

91

95

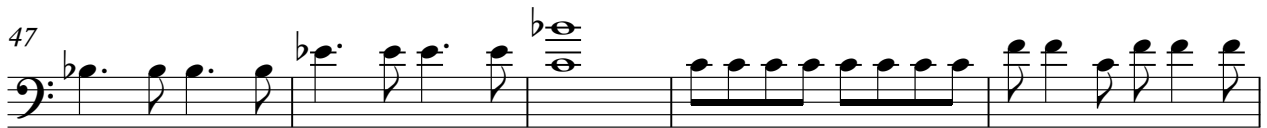
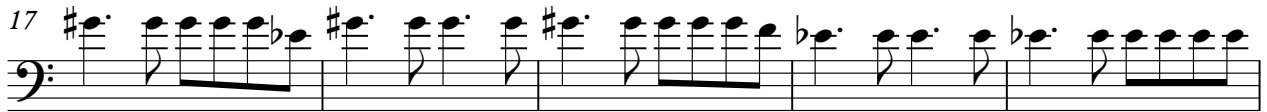
100

104  Trombone 3

Frankie Valli - Can't Take My Eyes Off Of You

Acc Bass

♩ = 120,000000



V.S.

52



57



61



66



71



76



81



86



92



97



101



105



52



57



61



66



71



76



81



86



92



97



101



105



Frankie Valli - Can't Take My Eyes Off Of You

Synth Brass 2

♩ = 120,000000

7

11

14

18

22

26

29

33

37

V.S.

41

45

45

49

53

57

61

65

69

73

77

81

85

89

93

96

100

103

105

Frankie Valli - Can't Take My Eyes Off Of You

Strings

♩ = 120,000000

7

11

14

18

22

26

29

33

37

V.S.

Musical score for strings, measures 41-77. The score is written in treble clef with a key signature of one flat (B-flat). The music features a variety of rhythmic patterns, including eighth and sixteenth notes, and rests. Triplet markings (3) are present in measures 41, 45, 65, 69, 73, and 77. The score is divided into systems of five measures each, with measure numbers 41, 45, 49, 53, 57, 61, 65, 69, 73, and 77 indicated at the beginning of each system.

81

85

89

93

96

100

103

105

Violin

Frankie Valli - Can't Take My Eyes Off Of You

♩ = 120,000000

8

13

18

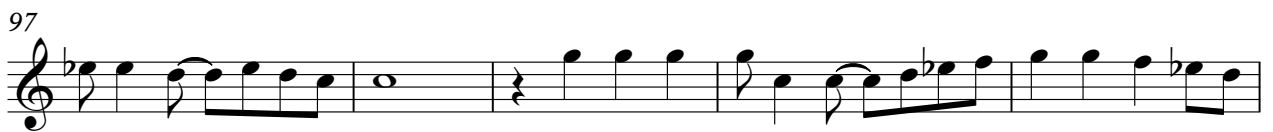
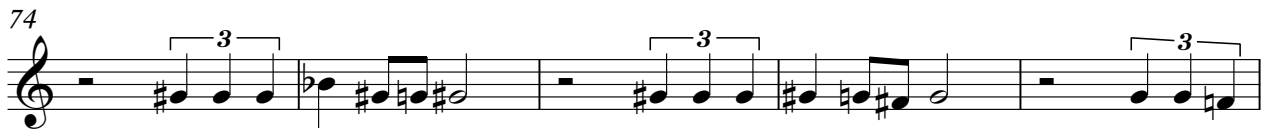
23

28

33

38

9



105

The image shows a single staff of music in treble clef with a key signature of one flat (B-flat). The music consists of four measures. Measure 105 starts with a quarter rest, followed by a quarter note B-flat, a quarter note C, a quarter note D, and a quarter note E. Measure 106 begins with a half note F, followed by a quarter note G, a quarter note A, and a quarter note B. Measure 107 contains a whole note C. Measure 108 features a quarter note D, a quarter note E, and a quarter note F. The piece concludes with a double bar line.