

Joe (The Walrus) Wallace - Don't Dream It's Over (Crowded House)

0.0"
1.1.00
ERIC N LE STUDIO
♩ = 82,000038

Musical score for the first system, featuring four staves: Loose Kick, Acoustic Guitar, Electric Guitar, and Synth Strings. The music is in 4/4 time and B-flat major. The Acoustic and Electric Guitars play a complex, syncopated chordal pattern. The Loose Kick drum part is mostly silent, with a few notes in the second measure. Synth Strings are also silent.



Musical score for the second system, featuring eight staves: Melody, Loose Kick, Closed Hi Hat, Lo Tom, Side Stick, Acoustic Guitar, Electric Guitar, Fingered Bass, and Synth Strings. The system begins with a measure rest for the Melody line. The Melody line then enters with a melodic phrase. The Loose Kick drum part has a steady quarter-note pattern. The Closed Hi Hat and Side Stick provide a consistent rhythmic accompaniment. The Acoustic and Electric Guitars continue with their complex chordal pattern. The Fingered Bass line provides a melodic and harmonic foundation. Synth Strings are silent.

b₀

7

Melody

Loose Kick

Closed Hi Hat

Side Stick

Acoustic Guitar

Electric Guitar

Electric Guitar

Fingered Bass

Synth Strings



10

Melody

Loose Kick

Closed Hi Hat

Open Hi Hat

Side Stick

Acoustic Guitar

Electric Guitar

Electric Guitar

Fingered Bass

Synth Strings

13

Melody

Loose Kick

Closed Hi Hat

Side Stick

Hi Crash Cymbal

Acoustic Guitar

Electric Guitar

Fingered Bass

Synth Strings



16

Melody

Loose Kick

Closed Hi Hat

Side Stick

Hi Crash Cymbal

Acoustic Guitar

Electric Guitar

Fingered Bass

Synth Strings

19

Melody

Loose Kick

Closed Hi Hat

Lo Mid Tom

Side Stick

Hi Crash Cymbal

Acoustic Guitar

Electric Guitar

Fingered Bass

Synth Strings



22

Melody

Loose Kick

Closed Hi Hat

Open Hi Hat

Side Stick

Hi Crash Cymbal

Acoustic Guitar

Electric Guitar

Fingered Bass

Synth Strings

25

Melody

Loose Kick

Closed Hi Hat

Open Hi Hat

Side Stick

Hi Crash Cymbal

Acoustic Guitar

Electric Guitar

Fingered Bass

Synth Strings



28

Melody

Loose Kick

Closed Hi Hat

Lo Mid Tom

Side Stick

Hi Crash Cymbal

Acoustic Guitar

Electric Guitar

Fingered Bass

Synth Strings

31

Melody

Loose Kick

Closed Hi Hat

Side Stick

Hi Crash Cymbal

Acoustic Guitar

Electric Guitar

Fingered Bass

Synth Strings

Detailed description: This block contains the musical score for measures 31 through 33. The score is arranged in a grand staff format with nine staves. The top staff is the Melody line in treble clef. The next four staves represent the drum kit: Loose Kick, Closed Hi Hat, Side Stick, and Hi Crash Cymbal. The bottom three staves represent the guitars and bass: Acoustic Guitar, Electric Guitar, and Fingered Bass. The Synth Strings staff is at the bottom. The key signature has one flat (B-flat), and the time signature is 4/4. The music features a steady drum pattern with a melodic line and guitar accompaniment.



34

Melody

Loose Kick

Closed Hi Hat

Lo Mid Tom

Side Stick

Hi Crash Cymbal

Acoustic Guitar

Electric Guitar

Fingered Bass

Organ 2

Synth Strings

Detailed description: This block contains the musical score for measures 34 through 36. The score is arranged in a grand staff format with ten staves. The top staff is the Melody line in treble clef. The next five staves represent the drum kit: Loose Kick, Closed Hi Hat, Lo Mid Tom, Side Stick, and Hi Crash Cymbal. The bottom three staves represent the guitars and bass: Acoustic Guitar, Electric Guitar, and Fingered Bass. The Organ 2 and Synth Strings staves are at the bottom. The key signature has one flat (B-flat), and the time signature is 4/4. The music continues with a steady drum pattern, a melodic line, and guitar accompaniment, including a triplet in the bass line.

37

Loose Kick

Closed Hi Hat

Lo Mid Tom

Side Stick

Hi Crash Cymbal

Acoustic Guitar

Electric Guitar

Fingered Bass

Organ 1

Organ 2

Synth Strings



40

Loose Kick

Closed Hi Hat

Side Stick

Hi Crash Cymbal

Acoustic Guitar

Electric Guitar

Fingered Bass

Organ 1

Organ 2

Synth Strings

43

This musical score covers measures 43 to 45. It features a drum kit with parts for Tight Snare, Loose Kick, Closed Hi Hat, Lo Tom, Side Stick, and Hi Crash Cymbal. The guitar section includes Acoustic and Electric Guitars. The bass line is played by a Fingered Bass. Organ 1 and Organ 2 provide harmonic support, while Synth Strings and Lead 6 (voice) are also present. The score includes various musical notations such as rests, notes, and accidentals.

46

This musical score covers measures 46 to 48. It continues the drum kit parts from the previous section, adding an Open Hi Hat part. The guitar section features a more active Electric Guitar part with triplets. The Fingered Bass and Synth Strings continue their respective parts. The score includes various musical notations such as rests, notes, and accidentals.

49

Melody

Tight Snare

Loose Kick

Closed Hi Hat

Open Hi Hat

Lo Tom

Acoustic Guitar

Electric Guitar

Electric Guitar

Fingered Bass

Synth Strings



52

Melody

Tight Snare

Loose Kick

Closed Hi Hat

Open Hi Hat

Acoustic Guitar

Electric Guitar

Electric Guitar

Fingered Bass

Synth Strings

54

Melody

Tight Snare

Loose Kick

Closed Hi Hat

Acoustic Guitar

Electric Guitar

Electric Guitar

Fingered Bass

Synth Strings

54

55

56

57

58

59

60

61

62

63

64

65

66

67

68

69

70

71

72

73

74

75

76

77

78

79

80

81

82

83

84

85

86

87

88

89

90

91

92

93

94

95

96

97

98

99

100

101

102

103

104

105

106

107

108

109

110

111

112

113

114

115

116

117

118

119

120

121

122

123

124

125

126

127

128

129

130

131

132

133

134

135

136

137

138

139

140

141

142

143

144

145

146

147

148

149

150

151

152

153

154

155

156

157

158

159

160

161

162

163

164

165

166

167

168

169

170

171

172

173

174

175

176

177

178

179

180

181

182

183

184

185

186

187

188

189

190

191

192

193

194

195

196

197

198

199

200

201

202

203

204

205

206

207

208

209

210

211

212

213

214

215

216

217

218

219

220

221

222

223

224

225

226

227

228

229

230

231

232

233

234

235

236

237

238

239

240

241

242

243

244

245

246

247

248

249

250

251

252

253

254

255

256

257

258

259

260

261

262

263

264

265

266

267

268

269

270

271

272

273

274

275

276

277

278

279

280

281

282

283

284

285

286

287

288

289

290

291

292

293

294

295

296

297

298

299

300

301

302

303

304

305

306

307

308

309

310

311

312

313

314

315

316

317

318

319

320

321

322

323

324

325

326

327

328

329

330

331

332

333

334

335

336

337

338

339

340

341

342

343

344

345

346

347

348

349

350

351

352

353

354

355

356

357

358

359

360

361

362

363

364

365

366

367

368

369

370

371

372

373

374

375

376

377

378

379

380

381

382

383

384

385

386

387

388

389

390

391

392

393

394

395

396

397

398

399

400

401

402

403

404

405

406

407

408

409

410

411

412

413

414

415

416

417

418

419

420

421

422

423

424

425

426

427

428

429

430

431

432

433

434

435

436

437

438

439

440

441

442

443

444

445

446

447

448

449

450

451

452

453

454

455

456

457

458

459

460

461

462

463

464

465

466

467

468

469

470

471

472

473

474

475

476

477

478

479

480

481

482

483

484

485

486

487

488

489

490

491

492

493

494

495

496

497

498

499

500

501

502

503

504

505

506

507

508

509

510

511

512

513

514

515

516

517

518

519

520

521

522

523

524

525

526

527

528

529

530

531

532

533

534

535

536

537

538

539

540

541

542

543

544

545

546

547

548

549

550

551

552

553

554

555

556

557

558

559

560

561

562

563

564

565

566

567

568

569

570

571

572

573

574

575

576

577

578

579

580

581

582

583

584

585

586

587

588

589

590

591

592

593

594

595

596

597

598

599

600

601

602

603

604

605

606

607

608

609

610

611

612

613

614

615

616

617

618

619

620

621

622

623

624

625

626

627

628

629

630

631

632

633

634

635

636

637

638

639

640

641

642

643

644

645

646

647

648

649

650

651

652

653

654

655

656

657

658

659

660

661

662

663

664

665

666

667

668

669

670

671

672

673

674

675

676

677

678

679

680

681

682

683

684

685

686

687

688

689

690

691

692

693

694

695

696

697

698

699

700

701

702

703

704

705

706

707

708

709

710

711

712

713

714

715

716

717

718

719

720

721

722

723

724

725

726

727

728

729

730

731

732

733

734

735

736

737

738

739

740

741

742

743

744

745

746

747

748

749

750

751

752

753

754

755

756

757

758

759

760

761

762

763

764

765

766

767

768

769

770

771

772

773

774

775

776

777

778

779

780

781

782

783

784

785

786

787

788

789

790

791

792

793

794

795

796

797

798

799

800

801

802

803

804

805

806

807

808

809

810

811

812

813

814

815

816

817

818

819

820

821

822

823

824

825

826

827

828

829

830

831

832

833

834

835

836

837

838

839

840

841

842

843

844

845

846

847

848

849

850

851

852

853

854

855

856

857

858

859

860

861

862

863

864

865

866

867

868

869

870

871

872

873

874

875

876

877

878

879

880

881

882

883

884

885

886

887

888

889

890

891

892

893

894

895

896

897

898

899

900

901

902

903

904

905

906

907

908

909

910

911

912

913

914

915

916

917

918

919

920

921

922

923

924

925

926

927

928

929

930

931

932

933

934

935

936

937

938

939

940

941

942

943

944

945

946

947

948

949

950

951

952

953

954

955

956

957

958

959

960

961

962

963

964

965

966

967

968

969

970

971

972

973

974

975

976

977

978

979

980

981

982

983

984

985

986

987

988

989

990

991

992

993

994

995

996

997

998

999

1000



57

Melody

Tight Snare

Loose Kick

Closed Hi Hat

Lo Tom

Acoustic Guitar

Electric Guitar

Electric Guitar

Fingered Bass

Synth Strings

57

58

59

60

60

Melody

Tight Snare

Loose Kick

Closed Hi Hat

Acoustic Guitar

Electric Guitar

Fingered Bass

Synth Strings

Detailed description: This system of music covers measures 60, 61, and 62. The Melody line is in treble clef with a key signature of one flat. It features a series of eighth and sixteenth notes, including a triplet in measure 62. The percussion tracks (Tight Snare, Loose Kick, Closed Hi Hat) provide a steady rhythmic accompaniment. The guitar tracks (Acoustic and Electric) play a consistent chordal pattern with eighth-note chords. The Fingered Bass line is in bass clef, providing a steady bass line. The Synth Strings track is in bass clef, playing a simple harmonic accompaniment.



63

Melody

Tight Snare

Loose Kick

Closed Hi Hat

Acoustic Guitar

Electric Guitar

Fingered Bass

Organ 1

Organ 2

Synth Strings

Detailed description: This system of music covers measures 63, 64, and 65. The Melody line continues with a more complex rhythmic pattern, including a triplet in measure 63. The percussion tracks remain consistent. The guitar tracks continue with their chordal accompaniment. The Fingered Bass line features a more active bass line with eighth notes. The Organ 1 and Organ 2 tracks are introduced in measure 65, playing a simple harmonic accompaniment. The Synth Strings track continues with its harmonic accompaniment.

67

Melody

Tight Snare

Loose Kick

Closed Hi Hat

Acoustic Guitar

Electric Guitar

Fingered Bass

Organ 1

Organ 2

Synth Strings



70

Melody

Tight Snare

Loose Kick

Closed Hi Hat

Lo Tom

Acoustic Guitar

Electric Guitar

Fingered Bass

Organ 1

Organ 2

Synth Strings

73

Melody

Tight Snare

Loose Kick

Closed Hi Hat

Acoustic Guitar

Electric Guitar

Fingered Bass

Organ 1

Organ 2

Synth Strings

Detailed description: This block contains the musical score for measures 73, 74, and 75. The score is arranged in a grand staff format with ten staves. The top staff is the Melody line, followed by three percussion staves: Tight Snare, Loose Kick, and Closed Hi Hat. Below these are the guitar and bass staves: Acoustic Guitar, Electric Guitar, and Fingered Bass. The bottom three staves are Organ 1, Organ 2, and Synth Strings. The music is in a key with one flat (B-flat) and a 4/4 time signature. The melody in measure 73 starts with a quarter rest, followed by eighth notes G4, A4, Bb4, and A4. The percussion consists of a steady snare and kick pattern with a closed hi-hat. The guitar parts feature complex chordal textures with many accidentals. The organ and synth strings provide harmonic support with sustained notes and chords.



76

Melody

Tight Snare

Loose Kick

Closed Hi Hat

Acoustic Guitar

Electric Guitar

Fingered Bass

Organ 1

Organ 2

Synth Strings

Detailed description: This block contains the musical score for measures 76, 77, and 78. The score continues with the same ten-staff arrangement as the previous block. The melody in measure 76 starts with eighth notes G4, A4, Bb4, and A4, followed by a quarter rest. The percussion continues with the same pattern. The guitar parts maintain their complex textures. The organ and synth strings continue their harmonic support. The score concludes with a double bar line at the end of measure 78.

Joe (The Walrus) Wallace - Don't Dream It's Over (Cro

Melody

♩ = 82,000038

4

8

12

16

20

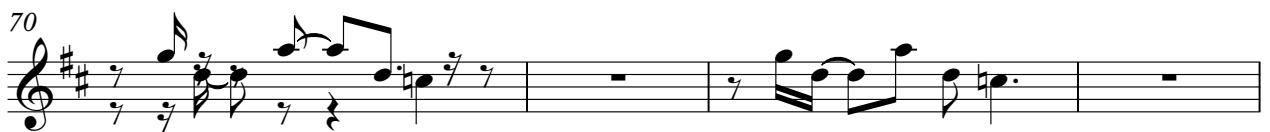
24

27

31

35

13



Tight Snare

Joe (The Walrus) Wallace - Don't Dream It's Over (Cro

♩ = 82,000038

43

43 44 45 46 47

48

48 49 50 51 52 53

54

54 55 56 57 58 59

60

60 61 62 63 64 65

66

66 67 68 69 70 71

72

72 73 74

75

75 76 77 78

Loose Kick

Joe (The Walrus) Wallace - Don't Dream It's Over (Cro

♩ = 82,000038

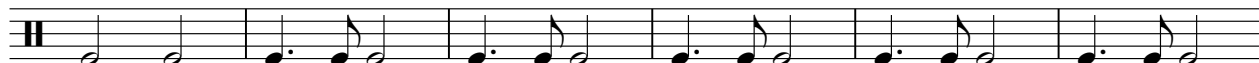
4



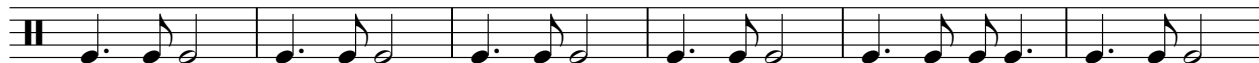
10



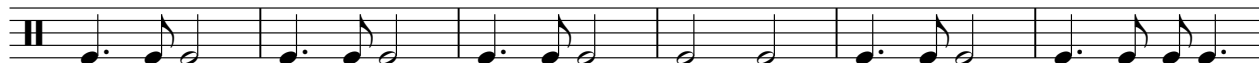
16



22



28



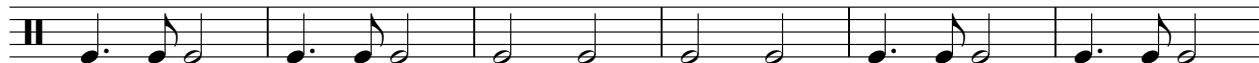
34



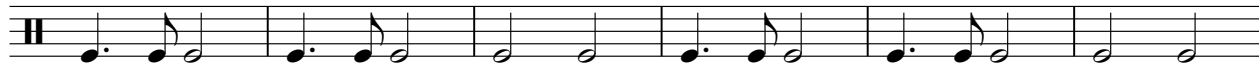
40



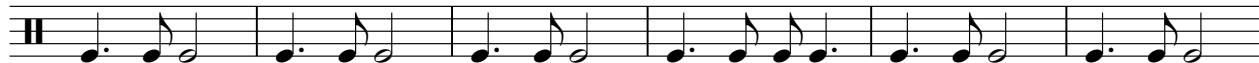
46



52



58



V.S.

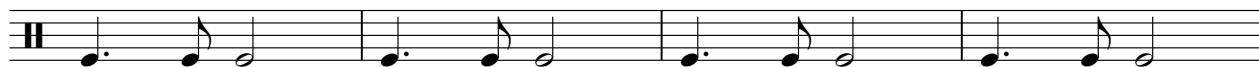
2

Loose Kick

64



70



74

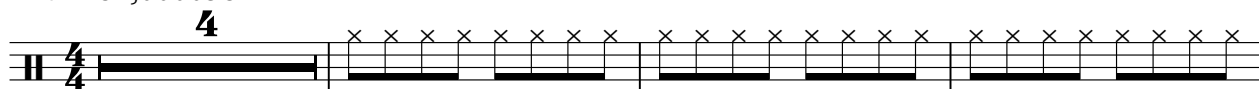


Closed Hi Hat

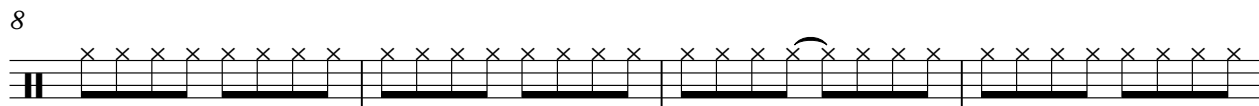
Joe (The Walrus) Wallace - Don't Dream It's Over (Cro

♩ = 82,000038

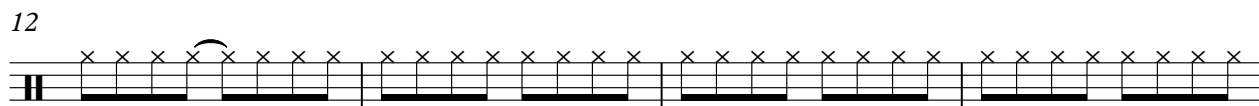
4



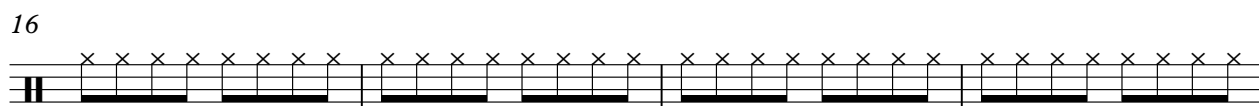
8



12



16



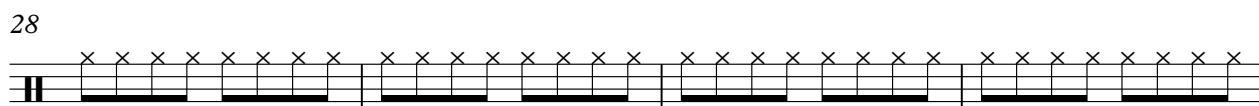
20



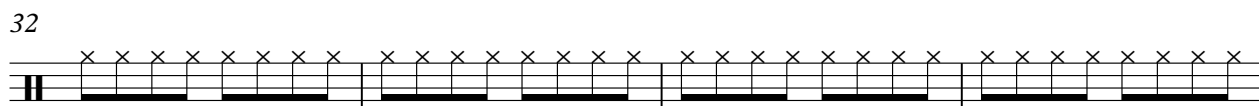
24



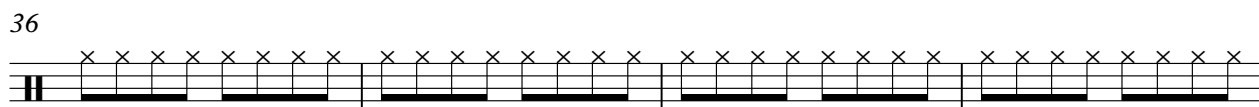
28



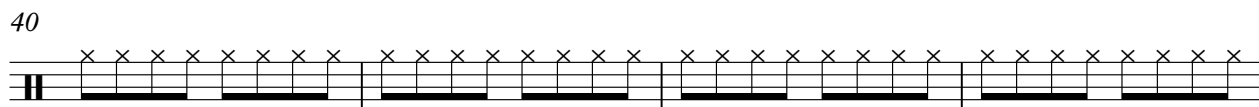
32



36



40

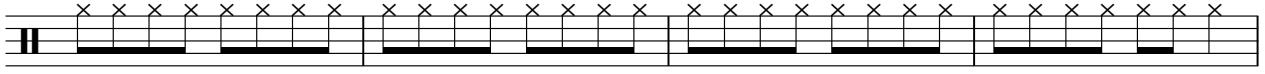


V.S.

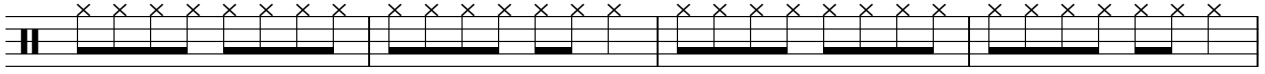
2

Closed Hi Hat

44



48



52



56



60



64



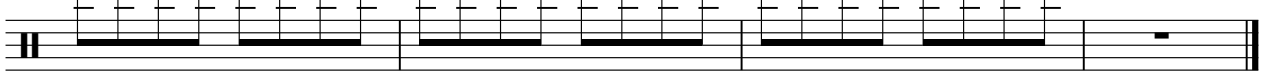
68



72



75



Open Hi Hat

Joe (The Walrus) Wallace - Don't Dream It's Over (Cro

♩ = 82,000038

9 10

A musical staff in 4/4 time. Measure 9 contains a whole rest. Measure 10 contains a quarter note with a diamond-shaped hi-hat symbol above it, followed by a whole rest.

23 19

A musical staff in 4/4 time. Measure 23 contains a quarter rest, a quarter note with a diamond-shaped hi-hat symbol above it, and a quarter note with a diamond-shaped hi-hat symbol above it. Measure 19 contains a whole rest.

47

A musical staff in 4/4 time. Measure 47 contains a quarter rest, a quarter note with a diamond-shaped hi-hat symbol above it, and a quarter note with a diamond-shaped hi-hat symbol above it.

52 25

A musical staff in 4/4 time. Measure 52 contains a quarter rest, a quarter note with a diamond-shaped hi-hat symbol above it, and a quarter note with a diamond-shaped hi-hat symbol above it. Measure 25 contains a whole rest.

Lo Mid Tom

Joe (The Walrus) Wallace - Don't Dream It's Over (Cro

♩ = 82,000038

19

6



28

7

42



Lo Tom

Joe (The Walrus) Wallace - Don't Dream It's Over (Cro

♩ = 82,000038

3 38

45

6 6

57

12

71

6

Side Stick

Joe (The Walrus) Wallace - Don't Dream It's Over (Cro

♩ = 82,000038

4

10

16

22

28

34

40

44

34

Hi Crash Cymbal

Joe (The Walrus) Wallace - Don't Dream It's Over (Cro

♩ = 82,000038

12

3

17

3

25

31

36

2

3

42

34

Acoustic Guitar

Joe (The Walrus) Wallace - Don't Dream It's Over (Cro

♩ = 82,000038

The image displays a musical score for acoustic guitar, consisting of ten staves of music. The score is written in a 4/4 time signature and features a key signature of one flat (B-flat). The tempo is indicated as 82,000038. The music is characterized by a complex, rhythmic pattern of chords and melodic lines, with many notes beamed together. The score includes various musical notations such as slurs, ties, and triplets. The first staff begins with a treble clef and a key signature of one flat. The second staff has a measure rest for the first measure. The third staff has a measure rest for the first measure. The fourth staff has a measure rest for the first measure. The fifth staff has a measure rest for the first measure. The sixth staff has a measure rest for the first measure. The seventh staff has a measure rest for the first measure. The eighth staff has a measure rest for the first measure. The ninth staff has a measure rest for the first measure. The tenth staff has a measure rest for the first measure. The score concludes with a double bar line.

V.S.

23



25



27



29



31



34



37



39



41



43



45 **5**

52

54

56

58 **3**

60

63

66 **3**

68

71 **3**

4

Acoustic Guitar

74

Musical notation for measures 74 and 75. Measure 74 contains four chords: F major (F4, A4, C5), G major (B3, D4, F4), A major (C4, E4, G4), and Bb major (Bb3, D4, F4). Measure 75 contains four chords: C major (C3, E3, G3), D major (F3, A3, C4), E major (G3, B3, D4), and F major (A2, C3, E3). The notation includes a treble clef, a key signature of one sharp (F#), and a common time signature (C).

76

Musical notation for measures 76 and 77. Measure 76 contains four chords: G major (B2, D3, F3), A major (C3, E3, G3), Bb major (Bb2, D3, F3), and C major (C3, E3, G3). Measure 77 contains four chords: D major (F2, A2, C3), E major (G2, B2, D3), F major (A2, C3, E3), and G major (B2, D3, F3). The notation includes a treble clef, a key signature of one sharp (F#), and a common time signature (C).

Joe (The Walrus) Wallace - Don't Dream It's Over (Cro

Electric Guitar

♩ = 82,000038

3

5

7

9

11

13

15

18

21

V.S.

23



Musical notation for measure 23, featuring a treble clef, a key signature of one sharp (F#), and a 4/4 time signature. The notation includes a series of eighth and sixteenth notes, some beamed together, and rests.

25




Musical notation for measure 25, featuring a treble clef, a key signature of one sharp (F#), and a 4/4 time signature. The notation includes a series of eighth and sixteenth notes, some beamed together, and rests.

27



Musical notation for measure 27, featuring a treble clef, a key signature of one sharp (F#), and a 4/4 time signature. The notation includes a series of eighth and sixteenth notes, some beamed together, and rests.

29



Musical notation for measure 29, featuring a treble clef, a key signature of one sharp (F#), and a 4/4 time signature. The notation includes a series of eighth and sixteenth notes, some beamed together, and rests. A triplet of eighth notes is marked with a '3' above it.

31



Musical notation for measure 31, featuring a treble clef, a key signature of one sharp (F#), and a 4/4 time signature. The notation includes a series of eighth and sixteenth notes, some beamed together, and rests.

34



Musical notation for measure 34, featuring a treble clef, a key signature of one sharp (F#), and a 4/4 time signature. The notation includes a series of eighth and sixteenth notes, some beamed together, and rests.

37



Musical notation for measure 37, featuring a treble clef, a key signature of one sharp (F#), and a 4/4 time signature. The notation includes a series of eighth and sixteenth notes, some beamed together, and rests.

39



Musical notation for measure 39, featuring a treble clef, a key signature of one sharp (F#), and a 4/4 time signature. The notation includes a series of eighth and sixteenth notes, some beamed together, and rests.

41



Musical notation for measure 41, featuring a treble clef, a key signature of one sharp (F#), and a 4/4 time signature. The notation includes a series of eighth and sixteenth notes, some beamed together, and rests.

43



Musical notation for measure 43, featuring a treble clef, a key signature of one sharp (F#), and a 4/4 time signature. The notation includes a series of eighth and sixteenth notes, some beamed together, and rests.

45 **5**

52

54

56

58 **3**

60

63

66 **3**

68

71 **3**

4

Electric Guitar

74

Musical notation for measures 74 and 75. Measure 74 contains a quarter rest, a quarter note chord (F4, A4, C5), a quarter note chord (G4, B4, D5), a quarter rest, a quarter note chord (B3, D4, F4), and a quarter note chord (C4, E4, G4). Measure 75 contains a quarter rest, a quarter note chord (F4, A4, C5), a quarter note chord (G4, B4, D5), a quarter rest, a quarter note chord (B3, D4, F4), and a quarter note chord (C4, E4, G4).

76

Musical notation for measures 76 and 77. Measure 76 contains a quarter rest, a quarter note chord (F4, A4, C5), a quarter note chord (G4, B4, D5), a quarter rest, a quarter note chord (B3, D4, F4), and a quarter note chord (C4, E4, G4). Measure 77 contains a quarter rest, a quarter note chord (F4, A4, C5), a quarter note chord (G4, B4, D5), a quarter rest, a quarter note chord (B3, D4, F4), and a quarter note chord (C4, E4, G4).

♩ = 82,000038

7 36

45

47

50

54 2

57 21

Joe (The Walrus) Wallace - Don't Dream It's Over (Cro

Fingered Bass

♩ = 82,000038

3

7

12

17

22

28

33

37

42

47

V.S.

51



58



63



67



71



74



Synth Strings

Joe (The Walrus) Wallace - Don't Dream It's Over (Cro

♩ = 82,000038

4

12

19

28

35

44

52

60

67

73

Detailed description: The image shows a musical score for a synth string instrument. It begins with a tempo marking of a quarter note equal to 82,000038. The music is in 4/4 time, indicated by a '4' above the first staff. The first staff contains a whole rest followed by a series of chords: Bb2, D3, E#3, F#3, Gb3, A3, Bb3, and D#3. The subsequent staves (12, 19, 28, 35, 44, 52, 60, 67, 73) contain a complex melodic line with various intervals and accidentals, including sharps, naturals, and flats. The piece concludes with a final whole rest on the 73rd staff.

Lead 6(voice)

Joe (The Walrus) Wallace - Don` t Dream It`s Over (Cro

♩ = 82,000038

43 **33**