

Johann Sebastian Bach - Brandenburg Concerto Nr 6 E

♩ = 114,001251

HARPSICHRD

STRINGS

STRINGS

STRINGS

STRINGS

STRINGS

STRINGS

3

HARPSICHRD

STRINGS

STRINGS

5

HARPSICHRD

STRINGS

STRINGS

7

HARPSICHRD

STRINGS

STRINGS

9

HARPSICHRD

STRINGS

STRINGS

STRINGS

10

HARPSICHRD

STRINGS

STRINGS

STRINGS

11

HARPSICHRD

STRINGS

STRINGS

STRINGS

12

HARPSICHRD

STRINGS

STRINGS

STRINGS



HAR

17

HARPSICHRD

STRINGS

STRINGS

STRINGS

18

HARPSICHRD

STRINGS

STRINGS

STRINGS

19

HARPSICHRD

STRINGS

STRINGS

STRINGS

20

HARPSICHRD

STRINGS

STRINGS

Measure 20: Harpsichord (HARPSICHRD) plays a chord of G4, B4, D5 in the right hand and a half note G3 in the left hand. Strings (STRINGS) play a half note G3 in the bass and a half note B4 in the treble.

Measure 21: Harpsichord (HARPSICHRD) plays a chord of G4, B4, D5 in the right hand and a half note G3 in the left hand. Strings (STRINGS) play a half note G3 in the bass and a half note B4 in the treble.



21

HARPSICHRD

STRINGS

STRINGS

STRINGS

STRINGS

Measure 21: Harpsichord (HARPSICHRD) plays a half note G4 in the right hand and a half note G3 in the left hand. Strings (STRINGS) play a half note G3 in the bass and a half note B4 in the treble.

Measure 22: Harpsichord (HARPSICHRD) plays a half note G4 in the right hand and a half note G3 in the left hand. Strings (STRINGS) play a half note G3 in the bass and a half note B4 in the treble.

22

HARPSICHRD

STRINGS

STRINGS

STRINGS



23

HARPSICHRD

STRINGS

STRINGS

STRINGS

STRINGS

STRINGS

♩ = 98,000786 ♩ = 114,001251

♩ = 98,000786 ♩ = 114,001251

24

HARPSICHRD

STRINGS

STRINGS

STRINGS

STRINGS



25

HARPSICHRD

STRINGS

STRINGS

STRINGS

STRINGS

26

HARPSICHRD

STRINGS

STRINGS

STRINGS

STRINGS



27

HARPSICHRD

STRINGS

STRINGS

STRINGS

STRINGS

28

HARPSICHRD

STRINGS

STRINGS

STRINGS

STRINGS

Detailed description: This block contains the musical notation for measures 28 and 29. Measure 28: The Harpsichord part consists of a treble staff with a whole note chord (F4, A4) and a bass staff with a whole note chord (C3, E2). The four string staves are in 12/8 time. The first string staff has a half note (F4), a quarter note (A4), and a half note (C5). The second string staff has a half note (F4), a quarter note (A4), and a half note (C5). The third string staff has a half note (F4), a quarter note (A4), and a half note (C5). The fourth string staff has a half note (F4), a quarter note (A4), and a half note (C5). Measure 29: The Harpsichord part consists of a treble staff with a whole note chord (F4, A4) and a bass staff with a whole note chord (C3, E2). The four string staves are in 12/8 time. The first string staff has a half note (F4), a quarter note (A4), and a half note (C5). The second string staff has a half note (F4), a quarter note (A4), and a half note (C5). The third string staff has a half note (F4), a quarter note (A4), and a half note (C5). The fourth string staff has a half note (F4), a quarter note (A4), and a half note (C5).



29

HARPSICHRD

STRINGS

STRINGS

STRINGS

STRINGS

Detailed description: This block contains the musical notation for measures 29 and 30. Measure 29: The Harpsichord part consists of a treble staff with a whole note chord (F4, A4) and a bass staff with a whole note chord (C3, E2). The four string staves are in 12/8 time. The first string staff has a half note (F4), a quarter note (A4), and a half note (C5). The second string staff has a half note (F4), a quarter note (A4), and a half note (C5). The third string staff has a half note (F4), a quarter note (A4), and a half note (C5). The fourth string staff has a half note (F4), a quarter note (A4), and a half note (C5). Measure 30: The Harpsichord part consists of a treble staff with a whole note chord (F4, A4) and a bass staff with a whole note chord (C3, E2). The four string staves are in 12/8 time. The first string staff has a half note (F4), a quarter note (A4), and a half note (C5). The second string staff has a half note (F4), a quarter note (A4), and a half note (C5). The third string staff has a half note (F4), a quarter note (A4), and a half note (C5). The fourth string staff has a half note (F4), a quarter note (A4), and a half note (C5).

30

HARPSICHRD

STRINGS

STRINGS

STRINGS

STRINGS

This system contains measures 30 through 33. The Harpsichord part (treble and bass staves) features a melodic line with eighth and sixteenth notes, including some grace notes. The four string parts (two violins and two violas) provide harmonic support with various rhythmic patterns, including sixteenth-note runs and sustained notes. The key signature has one flat (B-flat), and the time signature is 12/8.



31

HARPSICHRD

STRINGS

STRINGS

STRINGS

STRINGS

This system contains measures 34 through 37. The Harpsichord part continues with a similar melodic style. The string parts show more complex rhythmic interplay, with some measures featuring rests and others with active sixteenth-note patterns. The instrumentation remains the same: Harpsichord and four strings.

32

HARPSICHRD

STRINGS

STRINGS

STRINGS

STRINGS

STRINGS



33

HARPSICHRD

STRINGS

STRINGS

STRINGS

34

HARPSICHRD

STRINGS

STRINGS

STRINGS



35

HARPSICHORD

STRINGS

STRINGS

35

HARPSICHORD

STRINGS

STRINGS

36

HARPSICHRD

STRINGS

STRINGS

STRINGS

STRINGS



37

HARPSICHRD

STRINGS

STRINGS

STRINGS

38 15
♩ = 97,001053

HARPSICHRD

STRINGS ♩ = 97,001053

STRINGS

STRINGS

39 ♩ = 114,001251

HARPSICHRD

STRINGS ♩ = 114,001251

STRINGS

41

HARPSICHRD

STRINGS

STRINGS

43 ♩ = 113,000732

HARPSICHRD

STRINGS

STRINGS

Measure 43: Harpsichord treble has a chord of Bb, D, F, Ab. Harpsichord bass has a whole rest. Strings violin has a half note Bb, half note D. Strings viola has a half note Bb, half note D. Measure 44: Harpsichord treble has a chord of Bb, D, F, Ab. Harpsichord bass has a half note Bb, half note D. Strings violin has a half note Bb, half note D. Strings viola has a half note Bb, half note D.

==

45

HARPSICHRD

STRINGS

STRINGS

Measure 45: Harpsichord treble has a chord of Bb, D, F, Ab. Harpsichord bass has a half note Bb, half note D. Strings violin has a half note Bb, half note D. Strings viola has a half note Bb, half note D.

46 $\text{♩} = 107,001465$ $\text{♩} = 98,000786$

HARPSICHRD

STRINGS

STRINGS

STRINGS

STRINGS

==

47 $\text{♩} = 120,000000$

HARPSICHRD

STRINGS

STRINGS

STRINGS

STRINGS

48

HARPSICHRD

STRINGS

STRINGS

STRINGS

STRINGS

Measure 48: The Harpsichord part has a single note. The four string parts have a complex texture with many notes and accidentals. Measure 49: The Harpsichord part has a single note. The four string parts have a complex texture with many notes and accidentals.



49

HARPSICHRD

STRINGS

STRINGS

STRINGS

Measure 49: The Harpsichord part has a single note. The four string parts have a complex texture with many notes and accidentals. Measure 50: The Harpsichord part has a single note. The four string parts have a complex texture with many notes and accidentals.

50

HARPSICHRD

STRINGS

STRINGS

STRINGS

51

HARPSICHRD

STRINGS

STRINGS

STRINGS

52

HARPSICHRD

STRINGS

STRINGS

STRINGS

53 ♩ = 114,001251

HARPSICHRD

♩ = 114,001251

STRINGS

STRINGS

STRINGS

STRINGS



55

HARPSICHRD

STRINGS

STRINGS

STRINGS

STRINGS

56

HARPSICHRD

STRINGS

STRINGS

STRINGS

STRINGS



57

HARPSICHRD

STRINGS

STRINGS

STRINGS

58

HARPSICHRD

STRINGS

STRINGS

STRINGS

STRINGS



59

HARPSICHRD

STRINGS

STRINGS

STRINGS

60

HARPSICHRD

STRINGS

STRINGS

STRINGS

61

HARPSICHRD

STRINGS

STRINGS

STRINGS

62

HARPSICHRD

STRINGS

STRINGS

STRINGS

63

HARPSICHRD

STRINGS

STRINGS

STRINGS

64

HARPSICHRD

STRINGS

STRINGS

STRINGS

65

HARPSICHRD

STRINGS

STRINGS

STRINGS

$\text{♩} = 107,00$ $\text{♩} = 114,00$

$\text{♩} = 107,00$ $\text{♩} = 114,00$

67

HARPSICHRD

STRINGS

STRINGS

Measures 67-68. Harpsichord part (treble and bass staves) features chords and moving lines. String parts (violin and viola staves) feature a rhythmic pattern of eighth notes.



69

HARPSICHRD

STRINGS

STRINGS

Measures 69-70. Harpsichord part (treble and bass staves) features chords and moving lines. String parts (violin and viola staves) feature a rhythmic pattern of eighth notes.



71

HARPSICHRD

STRINGS

STRINGS

Measures 71-72. Harpsichord part (treble and bass staves) features chords and moving lines. String parts (violin and viola staves) feature a rhythmic pattern of eighth notes.

73

HARPSICHRD

STRINGS

STRINGS

STRINGS

Measure 73: Harpsichord plays a series of chords (F major, E minor, D major, C major) in the right hand and a rhythmic pattern in the left hand. The Strings play a rhythmic pattern in the first two staves and a melodic line in the third staff.

Measure 74: Harpsichord plays a series of chords (B minor, A major, G major, F major) in the right hand and a rhythmic pattern in the left hand. The Strings play a rhythmic pattern in the first two staves and a melodic line in the third staff.



75

HARPSICHRD

STRINGS

STRINGS

STRINGS

Measure 75: Harpsichord plays a melodic line (F major, E minor, D major, C major) in the bass clef. The Strings play a rhythmic pattern in the first two staves and a melodic line in the third staff.

Measure 76: Harpsichord plays a melodic line (B minor, A major, G major, F major) in the bass clef. The Strings play a rhythmic pattern in the first two staves and a melodic line in the third staff.

76

HARPSICHRD

STRINGS

STRINGS

STRINGS

77

HARPSICHRD

STRINGS

STRINGS

STRINGS

78

HARPSICHRD

STRINGS

STRINGS

STRINGS

79

HARPSICHRD

STRINGS

STRINGS

STRINGS

Measures 79-80. The Harpsichord part (treble and bass staves) features chords and a melodic line. The Strings part (three staves) features a rhythmic pattern of eighth notes and sixteenth notes.

81

HARPSICHRD

STRINGS

STRINGS

STRINGS

Measures 81-82. The Harpsichord part (bass staff) features a melodic line. The Strings part (three staves) features a rhythmic pattern of eighth notes and sixteenth notes.

82

HARPSICHRD

STRINGS

STRINGS

STRINGS

Measures 83-84. The Harpsichord part (bass staff) features a melodic line. The Strings part (three staves) features a rhythmic pattern of eighth notes and sixteenth notes.

83

HARPSICHRD

STRINGS

STRINGS

STRINGS

84

HARPSICHRD

STRINGS

STRINGS

STRINGS

85

HARPSICHRD

STRINGS

STRINGS

STRINGS

86

HARPSICHRD

STRINGS

STRINGS

STRINGS

Measure 86: Harpsichord (HARPSICHRD) plays a sequence of chords (F#4, C#5, F#4, C#5, F#4, C#5, F#4, C#5) with eighth notes in the right hand and dotted half notes in the left hand. Strings (STRINGS) consist of three parts: a treble part with sixteenth-note runs, a middle part with eighth-note chords, and a bass part with dotted half notes.



87

HARPSICHRD

STRINGS

STRINGS

STRINGS

Measure 87: Harpsichord (HARPSICHRD) plays a sequence of chords (F#4, C#5, F#4, C#5, F#4, C#5, F#4, C#5) with eighth notes in the right hand and dotted half notes in the left hand. Strings (STRINGS) consist of three parts: a treble part with eighth-note chords, a middle part with sixteenth-note runs, and a bass part with dotted half notes.

88 $\text{♩} = 101,001602 \text{ } \text{♩} = 114,001251$ ³¹

HARPSICHRD

STRINGS

STRINGS

STRINGS

STRINGS

STRINGS



89

HARPSICHRD

STRINGS

STRINGS

STRINGS

STRINGS

90

HARPSICHRD

STRINGS

STRINGS

STRINGS

STRINGS

Measures 90-91. The Harpsichord part (treble and bass staves) features a melodic line in the right hand and a rhythmic accompaniment in the left hand. The strings (four staves) provide harmonic support with various textures, including sustained notes and moving lines. The key signature has one flat (B-flat), and the time signature is 12/8.



91

HARPSICHRD

STRINGS

STRINGS

STRINGS

STRINGS

Measures 91-92. The Harpsichord part (treble and bass staves) continues the melodic and rhythmic patterns. The strings (four staves) maintain their harmonic support with sustained notes and moving lines. The key signature has one flat (B-flat), and the time signature is 12/8.

92

HARPSICHRD

STRINGS

STRINGS

STRINGS

STRINGS



93

HARPSICHRD

STRINGS

STRINGS

STRINGS

STRINGS

STRINGS

94

HARPSICHRD

STRINGS

STRINGS

STRINGS

STRINGS

STRINGS



95

HARPSICHRD

STRINGS

STRINGS

STRINGS

STRINGS

96

HARPSICHRD

STRINGS

STRINGS

STRINGS

STRINGS



97

HARPSICHRD

STRINGS

STRINGS

STRINGS

STRINGS

STRINGS

98

HARPSICHRD

STRINGS

STRINGS

STRINGS

98

99

HARPSICHRD

STRINGS

STRINGS

STRINGS

99

100

HARPSICHRD

STRINGS

STRINGS

100

101

HARPSICHRD

STRINGS

STRINGS

STRINGS

STRINGS

==

102

HARPSICHRD

STRINGS

STRINGS

STRINGS

103

$\text{♩} = 104,0085670786$

HARPSICHRD

STRINGS

STRINGS

STRINGS

STRINGS

104

$\text{♩} = 114,001251$

HARPSICHRD

STRINGS

STRINGS

106

HARPSICHRD

STRINGS

STRINGS

108

HARPSICHORD

STRINGS

STRINGS

STRINGS



110

HARPSICHORD

STRINGS

STRINGS



The image displays a musical score for the piece "The Great Wall" by John Williams. The score is arranged for Harpsichord and Strings. The Harpsichord part is written in treble and bass clefs, with a key signature of one flat (B-flat). The Strings part consists of three staves, all in bass clef, with a key signature of one flat. The tempo is marked as "Allegretto" and the time signature is 3/4. The score includes a tempo change to "Allegretto" at measure 111. The Harpsichord part features a melodic line in the right hand and a supporting line in the left hand, with a prominent arpeggiated figure in the right hand. The Strings part provides a rhythmic and harmonic foundation, with the first staff playing a steady eighth-note pattern and the other two staves providing harmonic support. The score is presented in a clean, professional layout with clear notation and a white background.

111

$\text{♩} = 103,000518018069 = 65,0004830$

HARPSICHRD

$\text{♩} = 83,000163,000488$

$\text{♩} = 103,0007558300069 = 59,000530$


STRINGS

STRINGS

STRINGS

HARPSICHRD

115



HARPSICHRD

122



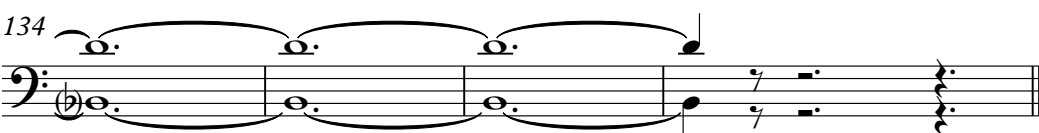
HARPSICHRD

129



HARPSICHRD

134



♩ = 114,001251

Measures 1-4 of the Harpsichord part. The music is in E major and 12/8 time. Measure 1 is a whole rest. Measures 2-4 contain complex chordal textures with many accidentals.

5

Measures 5-7 of the Harpsichord part. Measure 5 features a rapid sixteenth-note arpeggiated figure in the right hand. Measures 6-7 continue with dense chordal patterns.

8

Measures 8-10 of the Harpsichord part. Measure 8 has a melodic line in the right hand. Measure 9 features a sixteenth-note arpeggiated figure. Measure 10 is a whole rest.

11

Measures 11-13 of the Harpsichord part. Measures 11-12 are in the bass clef, showing a continuous sixteenth-note arpeggiated figure. Measure 13 is a whole rest.

14

Measures 14-16 of the Harpsichord part. Measures 14-15 are in the treble clef with dense chords. Measure 16 is a whole rest.

17

Measures 17-19 of the Harpsichord part. Measures 17-18 are in the bass clef with a continuous sixteenth-note arpeggiated figure. Measure 19 is a whole rest.

V.S.

20

23

$\text{♩} = 98,000786$ $\text{♩} = 114,001251$

25

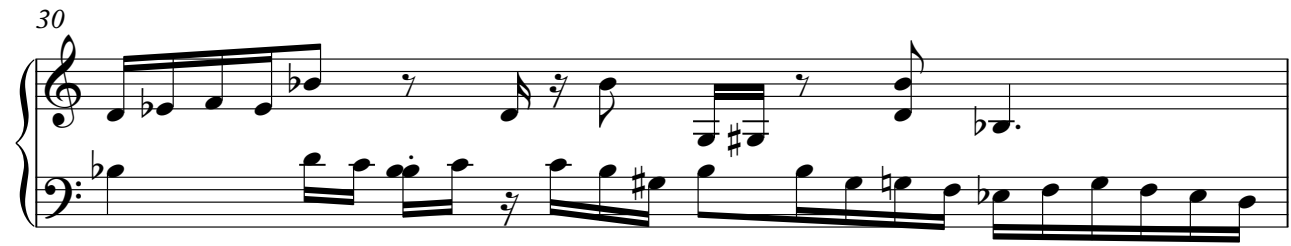
26

27

29

30

30



31



32



34



37

$\text{♩} = 97, 0110601251$



40



V.S.

4

HARPSICHRD

43 ♩ = 113,000732



46

♩ = 107,001465



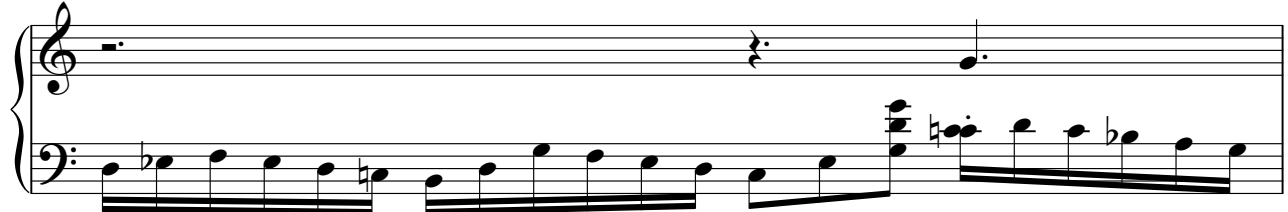
49



53 ♩ = 114,001251



56




57



59



62

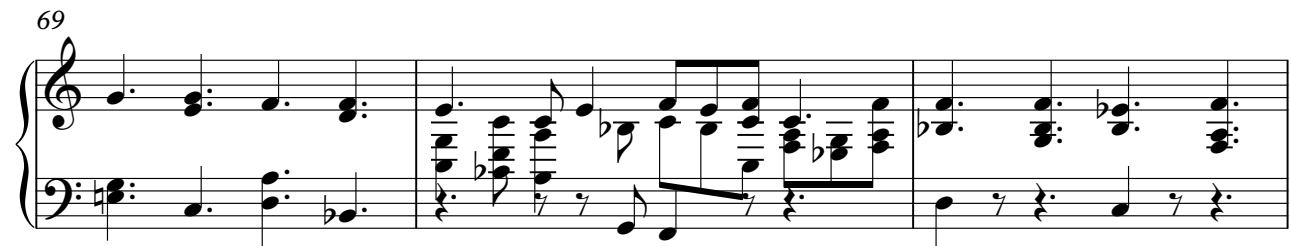


66

$\text{♩} = 107,50074651053114,001251$



69



72



74



V.S.

76



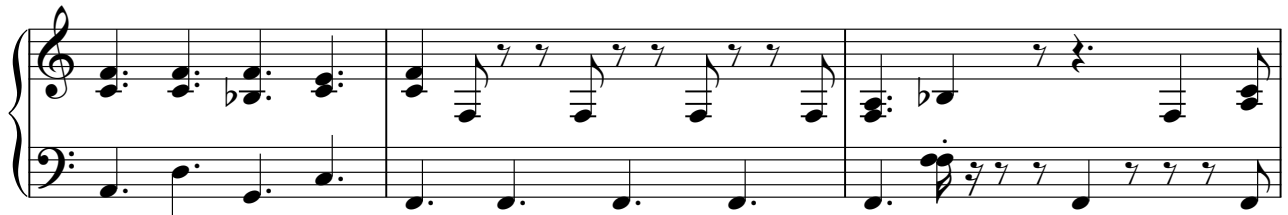
79



82



85



88

 $\text{♩} = 101,001602 = 114,001251$ 

90



91



92

Measures 92-93: Treble clef has a half note G4, a quarter note A4, and a quarter note B4. Bass clef has a half note G3, a quarter note A3, and a quarter note B3. Measure 93 continues with similar patterns.

94

Measures 94-95: Treble clef has a half note G4, a quarter note A4, and a quarter note B4. Bass clef has a half note G3, a quarter note A3, and a quarter note B3. Measure 95 continues with similar patterns.

95

Measures 95-96: Treble clef has a half note G4, a quarter note A4, and a quarter note B4. Bass clef has a half note G3, a quarter note A3, and a quarter note B3. Measure 96 continues with similar patterns.

96

Measures 96-97: Treble clef has a half note G4, a quarter note A4, and a quarter note B4. Bass clef has a half note G3, a quarter note A3, and a quarter note B3. Measure 97 continues with similar patterns.

97

Measures 97-98: Treble clef has a half note G4, a quarter note A4, and a quarter note B4. Bass clef has a half note G3, a quarter note A3, and a quarter note B3. Measure 98 continues with similar patterns.

99

Measures 99-100: Treble clef has a half note G4, a quarter note A4, and a quarter note B4. Bass clef has a half note G3, a quarter note A3, and a quarter note B3. Measure 100 continues with similar patterns.

V.S.

STRINGS

Johann Sebastian Bach - Brandenburg Concerto Nr 6 E

♩ = 114,001251

8

11

13

2

17

19

22

♩ = 98,00008251

25

28

30

32

V.S.

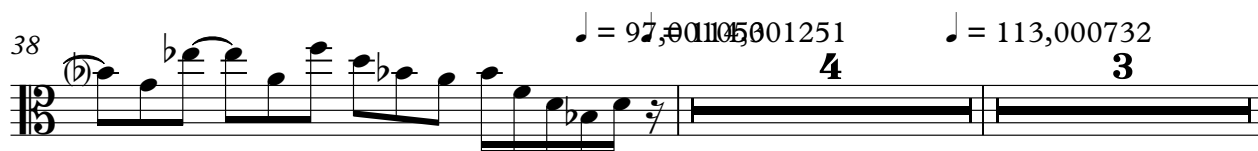
34



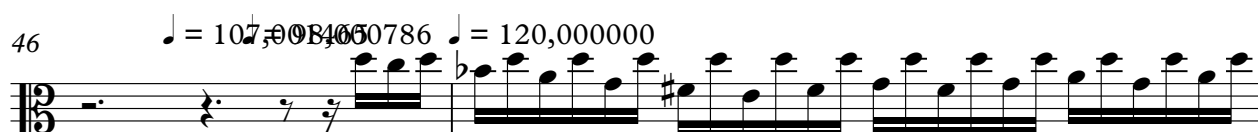
36



38



46



48



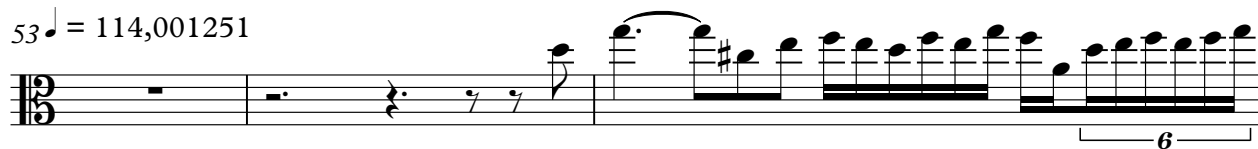
49



51



53 ♩ = 114,001251




56



59



3

01 

[illegible]

75

Measure 75: The notation begins with a bass clef and a key signature of one flat (B-flat). The first half of the measure contains a series of eighth notes: B-flat, A, G, F, E, D, C, B-flat. This is followed by a quarter rest. The second half of the measure contains a series of eighth notes: B-flat, A, G, F, E, D, C, B-flat. This is followed by a quarter rest. The measure concludes with a half note B-flat.

77

78

2

81

Musical notation for measure 81, bass clef, 4/4 time. The measure contains a complex rhythmic pattern with eighth and sixteenth notes, including triplets and beams.

83

83

84 ♩ = 101

3

89



92



95



97



99



101



103



♩ = 104,98,005786 ♩ = 114,001251

♩ = 109,38005786 ♩ = 114,001251

7

27

STRINGS

Johann Sebastian Bach - Brandenburg Concerto Nr 6 E

♩ = 114,001251

9

11

12

13

16

18

21

23

♩ = 98,0007861251

26

29

V.S.

31

[illegible]

(b)

STRINGS

3

60



62



64



♩ = 107.5001465125
9

75



77



78



81



83



86



88

♩ = 107.50014651251



V.S.

STRINGS

Johann Sebastian Bach - Brandenburg Concerto Nr 6 E

$\text{♩} = 114,001251$

4

6

8

14

20

23

$\text{♩} = 98,000786$ $\text{♩} = 114,001251$

11

35

38

♩ = 97,001043001251



41



♩ = 113,000732



45

♩ = 107,001465 ♩ = 98,000786



♩ = 120,000000

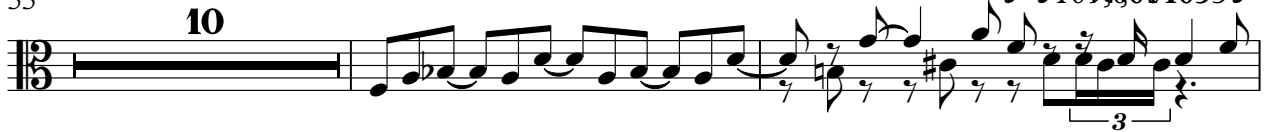
♩ = 114,001251



55

10

♩ = 109,0004653 ♩ = 114,00



67



69



71



73



STRINGS

3

79



85



87



93



100



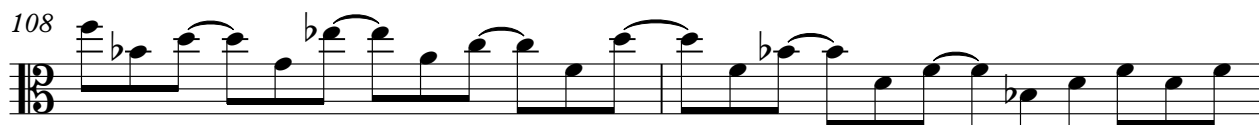
104 ♩ = 114,001251



106



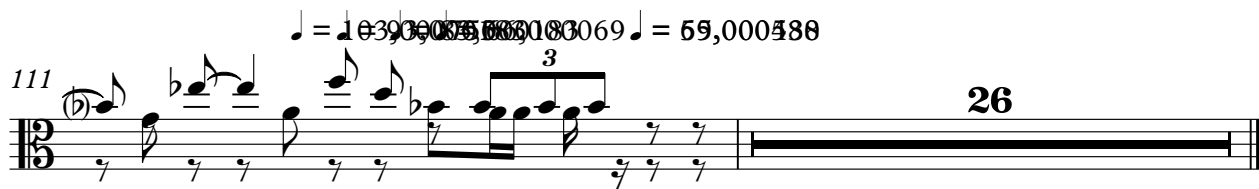
108



110



111



STRINGS

Johann Sebastian Bach - Brandenburg Concerto Nr 6 E

♩ = 114,001251

5

8

11

14

17

20

22

♩ = 98,000786001251

4

3



Musical notation for the bass line of 'The Rose Tree'. The key signature has one flat (B-flat). The melody consists of eighth and quarter notes, with a final quarter note in the third measure.

♩ = ♩_{97,004,053} 251

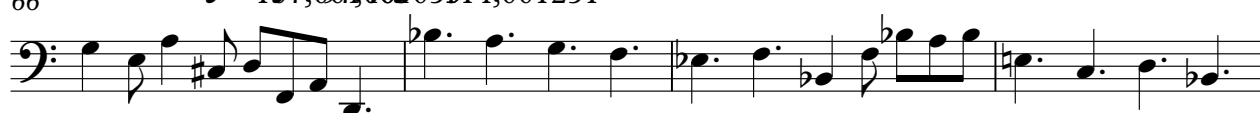


♩ = 113,000732


$$\bullet = 107,001465 = \bullet 98,120,786000$$


Musical notation for the bass line of 'The Rose Tree'. The key signature has one flat (B-flat). The melody consists of the following notes: G2, A2, Bb2, C3, D3, E3, F3, G3, A3, Bb3, C4, D4, E4, F4, G4, A4, Bb4, C5, D5, E5, F5, G5, A5, Bb5, C6, D6, E6, F6, G6, A6, Bb6, C7, D7, E7, F7, G7, A7, Bb7, C8, D8, E8, F8, G8, A8, Bb8, C9, D9, E9, F9, G9, A9, Bb9, C10, D10, E10, F10, G10, A10, Bb10, C11, D11, E11, F11, G11, A11, Bb11, C12, D12, E12, F12, G12, A12, Bb12, C13, D13, E13, F13, G13, A13, Bb13, C14, D14, E14, F14, G14, A14, Bb14, C15, D15, E15, F15, G15, A15, Bb15, C16, D16, E16, F16, G16, A16, Bb16, C17, D17, E17, F17, G17, A17, Bb17, C18, D18, E18, F18, G18, A18, Bb18, C19, D19, E19, F19, G19, A19, Bb19, C20, D20, E20, F20, G20, A20, Bb20, C21, D21, E21, F21, G21, A21, Bb21, C22, D22, E22, F22, G22, A22, Bb22, C23, D23, E23, F23, G23, A23, Bb23, C24, D24, E24, F24, G24, A24, Bb24, C25, D25, E25, F25, G25, A25, Bb25, C26, D26, E26, F26, G26, A26, Bb26, C27, D27, E27, F27, G27, A27, Bb27, C28, D28, E28, F28, G28, A28, Bb28, C29, D29, E29, F29, G29, A29, Bb29, C30, D30, E30, F30, G30, A30, Bb30, C31, D31, E31, F31, G31, A31, Bb31, C32, D32, E32, F32, G32, A32, Bb32, C33, D33, E33, F33, G33, A33, Bb33, C34, D34, E34, F34, G34, A34, Bb34, C35, D35, E35, F35, G35, A35, Bb35, C36, D36, E36, F36, G36, A36, Bb36, C37, D37, E37, F37, G37, A37, Bb37, C38, D38, E38, F38, G38, A38, Bb38, C39, D39, E39, F39, G39, A39, Bb39, C40, D40, E40, F40, G40, A40, Bb40, C41, D41, E41, F41, G41, A41, Bb41, C42, D42, E42, F42, G42, A42, Bb42, C43, D43, E43, F43, G43, A43, Bb43, C44, D44, E44, F44, G44, A44, Bb44, C45, D45, E45, F45, G45, A45, Bb45, C46, D46, E46, F46, G46, A46, Bb46, C47, D47, E47, F47, G47, A47, Bb47, C48, D48, E48, F48, G48, A48, Bb48, C49, D49, E49, F49, G49, A49, Bb49, C50, D50, E50, F50, G50, A50, Bb50, C51, D51, E51, F51, G51, A51, Bb51, C52, D52, E52, F52, G52, A52, Bb52, C53, D53, E53, F53, G53, A53, Bb53, C54, D54, E54, F54, G54, A54, Bb54, C55, D55, E55, F55, G55, A55, Bb55, C56, D56, E56, F56, G56, A56, Bb56, C57, D57, E57, F57, G57, A57, Bb57, C58, D58, E58, F58, G58, A58, Bb58, C59, D59, E59, F59, G59, A59, Bb59, C60, D60, E60, F60, G60, A60, Bb60, C61, D61, E61, F61, G61, A61, Bb61, C62, D62, E62, F62, G62, A62, Bb62, C63, D63, E63, F63, G63, A63, Bb63, C64, D64, E64, F64, G64, A64, Bb64, C65, D65, E65, F65, G65, A65, Bb65, C66, D66, E66, F66, G66, A66, Bb66, C67, D67, E67, F67, G67, A67, Bb67, C68, D68, E68, F68, G68, A68, Bb68, C69, D69, E69, F69, G69, A69, Bb69, C70, D70, E70, F70, G70, A70, Bb70, C71, D71, E71, F71, G71, A71, Bb71, C72, D72, E72, F72, G72, A72, Bb72, C73, D73, E73, F73, G73, A73, Bb73, C74, D74, E74, F74, G74, A74, Bb74, C75, D75, E75, F75, G75, A75, Bb75, C76, D76, E76, F76, G76, A76, Bb76, C77, D77, E77, F77, G77, A77, Bb77, C78, D78, E78, F78, G78, A78, Bb78, C79, D79, E79, F79, G79, A79, Bb79, C80, D80, E80, F80, G80, A80, Bb80, C81, D81, E81, F81, G81, A81, Bb81, C82, D82, E82, F82, G82, A82, Bb82, C83, D83, E83, F83, G83, A83, Bb83, C84, D84, E84, F84, G84, A84, Bb84, C85, D85, E85, F85, G85, A85, Bb85, C86, D86, E86, F86, G86, A86, Bb86, C87, D87, E87, F87, G87, A87, Bb87, C88, D88, E88, F88, G88, A88, Bb88, C89, D89, E89, F89, G89, A89, Bb89, C90, D90, E90, F90, G90, A90, Bb90, C91, D91, E91, F91, G91, A91, Bb91, C92, D92, E92, F92, G92, A92, Bb92, C93, D93, E93, F93, G93, A93, Bb93, C94, D94, E94, F94, G94, A94, Bb94, C95, D95, E95, F95, G95, A95, Bb95, C96, D96, E96, F96, G96, A96, Bb96, C97, D97, E97, F97, G97, A97, Bb97, C98, D98, E98, F98, G98, A98, Bb98, C99, D99, E99, F99, G99, A99, Bb99, C100, D100, E100, F100, G100, A100, Bb100, C101, D101, E101, F101, G101, A101, Bb101, C102, D102, E102, F102, G102, A102, Bb102, C103, D103, E103, F103, G103, A103, Bb103, C104, D104, E104, F104, G104, A104, Bb104, C105, D105, E105, F105, G105, A105, Bb105, C106, D106, E106, F106, G106, A106, Bb106, C107, D107, E107, F107, G107, A107, Bb107, C108, D108, E108, F108, G108, A108, Bb108, C109, D109, E109, F109, G109, A109, Bb109, C110, D110, E110, F110, G110, A110, Bb110, C111, D111, E111, F111, G111, A111, Bb111, C112, D112, E112, F112, G112, A112, Bb112, C113, D113, E113, F113, G113, A113, Bb113, C114, D114, E114, F114, G114, A114, Bb114, C115, D115, E115, F115, G115, A115, Bb115, C116, D116, E116, F116, G116, A116, Bb116, C117, D117, E117, F117, G117, A117, Bb117, C118, D118, E118, F118, G118, A118, Bb118, C119, D119, E119, F119, G119, A119, Bb119, C120, D120, E120, F120, G120, A120, Bb120, C121, D121, E121, F121, G121, A121, Bb121, C122, D122, E122, F122, G122, A122, Bb122, C123, D123, E123, F123, G123, A123, Bb123, C124, D124, E124, F124, G124, A124, Bb124, C125, D125, E125, F125, G125, A125, Bb125, C126, D126, E126, F126, G126, A126, Bb126, C127, D127, E127, F127, G127, A127, Bb127, C128, D128, E128, F128, G128, A128, Bb128, C129, D129, E129, F129, G129, A129, Bb129, C130, D130, E130, F130, G130, A130, Bb130, C131, D131, E131, F131, G131, A131, Bb131, C132, D132, E132, F132, G132, A132, Bb132, C133, D133, E133, F133, G133, A133, Bb133, C134, D134, E134, F134, G134, A134, Bb134, C135, D135,

♩ = 114,001251

[illegible][illegible]
$$\bullet = 107,007,065 \pm 14,001251$$


3

[illegible]

Musical notation for the bass line of 'The Rose Tree'. The key signature is one flat (B-flat), and the time signature is 3/4. The melody starts on a low note, moves up stepwise, and features a double bar line after the first measure. The notation includes various note values (quarter, eighth, and sixteenth notes) and rests.

Musical notation for the bass line of 'The Rose Tree'. The key signature is one flat (B-flat). The melody consists of eighth and quarter notes, ending with a quarter rest.

The bass line of 'The Rose Tree' is written on a single staff with a bass clef. It consists of 12 measures. The first measure has a whole note G2. The second measure has a whole note F2. The third measure has a whole note E2. The fourth measure has a whole note D2. The fifth measure has a whole note C2. The sixth measure has a whole note B1. The seventh measure has a whole note A1. The eighth measure has a whole note G1. The ninth measure has a whole note F1. The tenth measure has a whole note E1. The eleventh measure has a whole note D1. The twelfth measure has a whole note C1.

The first system of the bass line consists of four measures. The first measure contains a half note G2, a half note A2, and a half note B2. The second measure contains a half note C3, a half note D3, and a half note E3. The third measure contains a half note F3, a half note G3, and a half note A3. The fourth measure contains a half note B3, a half note C4, and a half note D4. The key signature is one flat (Bb) and the time signature is 3/4.

The bass line of 'The Rose Tree' is written on a single staff with a bass clef. It consists of two measures. The first measure contains four quarter notes: G2, A2, B2, and C3. The second measure contains four quarter notes: B2, A2, G2, and F2.

4

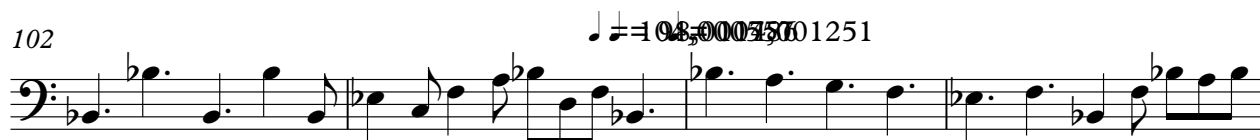
93



99



102



106



110



STRINGS

Johann Sebastian Bach - Brandenburg Concerto Nr 6 E

♩ = 114,001251 **22** ♩ = 98,000786 ♩ = 114,001251

24

26

27

29

30

31

33 **5** ♩ = 97,001051251 **4**

43 ♩ = 113,000732 **3** ♩ = 107,98,000786 ♩ = 120,000000 **6** ♩ = 114,001251

54



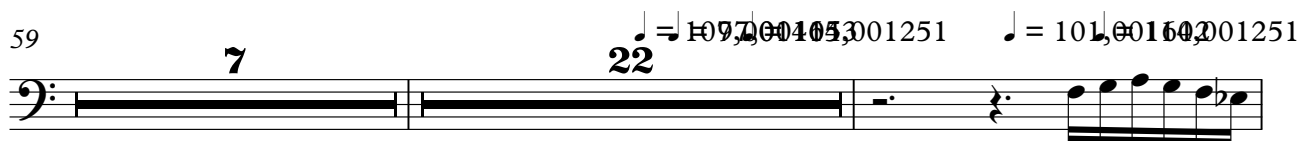
56



57



59



89



91



92



94



95



96



3

5

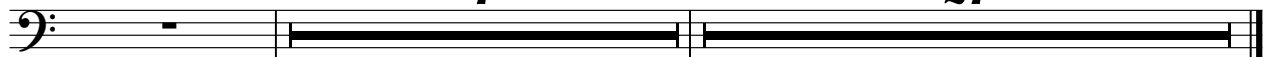


♩ ♯ = 198, 000, 000 251

$$\bullet = 1 + 3,900,000 + 55,000 + 3,069,488 = 59,000,000$$

7

27



STRINGS

Johann Sebastian Bach - Brandenburg Concerto Nr 6 E

$\text{♩} = 114,001251$ $\text{♩} = 98,000736$ $\text{♩} = 107,001455$ $\text{♩} = 104,001251$ $\text{♩} = 103,000751$ $\text{♩} = 103,000751$

22

26

30

39

48

56

89

93

98

111

5

7

26