

Gloria Estefan - Coming Out Of The Dark

♩ = 64,000000

WinJammer Demo

WinJammer Demo

♩ = 64,000000

WinJammer Demo

4

WinJammer Demo

WinJammer Demo

WinJammer Demo

WinJammer Demo

7

WinJammer Demo

WinJammer Demo

WinJammer Demo

10

WinJammer Demo

WinJammer Demo

WinJammer Demo

WinJammer Demo

13

WinJammer Demo

WinJammer Demo

WinJammer Demo

WinJammer Demo

WinJammer Demo

15

WinJammer Demo

WinJammer Demo

WinJammer Demo

WinJammer Demo

WinJammer Demo

18

WinJammer Demo

WinJammer Demo

WinJammer Demo

WinJammer Demo

21

WinJammer Demo

WinJammer Demo

WinJammer Demo

WinJammer Demo

24

WinJammer Demo

WinJammer Demo

WinJammer Demo

WinJammer Demo

27

WinJammer Demo

WinJammer Demo

WinJammer Demo

30

WinJammer Demo

WinJammer Demo

WinJammer Demo

33

WinJammer Demo

WinJammer Demo

WinJammer Demo

WinJammer Demo

35

WinJammer Demo

WinJammer Demo

WinJammer Demo

WinJammer Demo

38

WinJammer Demo

WinJammer Demo

WinJammer Demo

WinJammer Demo

41

WinJammer Demo

WinJammer Demo

WinJammer Demo

WinJammer Demo

43

WinJammer Demo

WinJammer Demo

WinJammer Demo

WinJammer Demo

45

WinJammer Demo

WinJammer Demo

WinJammer Demo

WinJammer Demo

47

WinJammer Demo

WinJammer Demo

WinJammer Demo

WinJammer Demo

WinJammer Demo

49

WinJammer Demo

WinJammer Demo

WinJammer Demo

WinJammer Demo

6

3

6

6

52

WinJammer Demo

WinJammer Demo

WinJammer Demo

WinJammer Demo

6

3

6

6

55

WinJammer Demo

WinJammer Demo

WinJammer Demo

WinJammer Demo

6

3

6

6

57

WinJammer Demo

WinJammer Demo

WinJammer Demo

WinJammer Demo

60

WinJammer Demo

WinJammer Demo

WinJammer Demo

WinJammer Demo

WinJammer Demo

62

WinJammer Demo

WinJammer Demo

WinJammer Demo

WinJammer Demo

WinJammer Demo

♩ = 64,000000

4

8

12

15

19

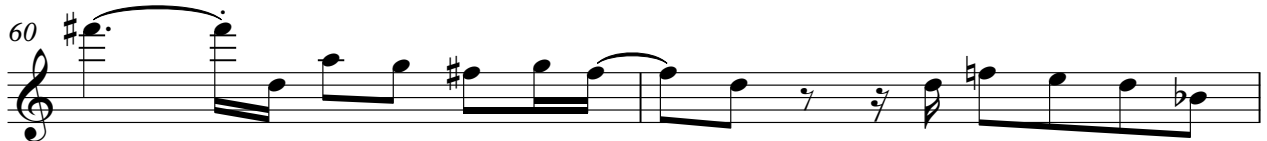
26

30

34

38

41



♩ = 64,000000

7

13

19

25

31

37

42

47

53

V.S.

WinJammer Demo

59

Musical notation for WinJammer Demo, measure 59. The notation is in treble clef with a key signature of two sharps (F# and C#). The measure contains six notes: a dotted quarter note (F#), an eighth note (G), a triplet eighth note (A), a dotted quarter note (B), an eighth note (C), and a triplet eighth note (D). The triplet eighth notes are marked with a '3' above them. The measure ends with a double bar line.

♩ = 64,000000

5

18

23

34

40

43

WinJammer Demo

47

This musical staff contains measures 47 through 50. It begins with a treble clef and a key signature of one sharp (F#). Measure 47 starts with a whole rest, followed by a sixteenth rest, then a triplet of sixteenth notes (F#, G, A). Measure 48 features a triplet of sixteenth notes (B, C, D), a dotted eighth note (E), and a sixteenth note (F#). Measure 49 contains a dotted eighth note (G), a sixteenth note (A), and a dotted quarter note (B). Measure 50 consists of a dotted quarter note (C), an eighth note (D), and a dotted quarter note (E).

51

This musical staff contains measures 51 through 54. It begins with a treble clef and a key signature of one sharp (F#). Measure 51 starts with a whole rest, followed by a sixteenth rest, then a triplet of sixteenth notes (F#, G, A). Measure 52 features a triplet of sixteenth notes (B, C, D), a dotted eighth note (E), and a sixteenth note (F#). Measure 53 contains a dotted eighth note (G), a sixteenth note (A), and a dotted quarter note (B). Measure 54 consists of a dotted quarter note (C), an eighth note (D), and a dotted quarter note (E).

55

This musical staff contains measures 55 through 58. It begins with a treble clef and a key signature of one sharp (F#). Measure 55 starts with a whole rest, followed by a sixteenth rest, then a triplet of sixteenth notes (F#, G, A). Measure 56 features a triplet of sixteenth notes (B, C, D), a dotted eighth note (E), and a sixteenth note (F#). Measure 57 contains a dotted eighth note (G), a sixteenth note (A), and a dotted quarter note (B). Measure 58 consists of a dotted quarter note (C), an eighth note (D), and a dotted quarter note (E).

59

This musical staff contains measures 59 through 61. It begins with a treble clef and a key signature of one sharp (F#). Measure 59 starts with a whole rest, followed by a sixteenth rest, then a triplet of sixteenth notes (F#, G, A). Measure 60 features a triplet of sixteenth notes (B, C, D), a dotted eighth note (E), and a sixteenth note (F#). Measure 61 contains a dotted eighth note (G), a sixteenth note (A), and a dotted quarter note (B).

62

This musical staff contains measures 62 through 65. It begins with a treble clef and a key signature of one sharp (F#). Measure 62 starts with a dotted quarter note (C), an eighth note (D), and a dotted quarter note (E). Measure 63 consists of a dotted quarter note (F#), an eighth note (G), and a dotted quarter note (A). Measure 64 features a triplet of sixteenth notes (B, C, D), a dotted eighth note (E), and a sixteenth note (F#). Measure 65 contains a dotted eighth note (G), a sixteenth note (A), and a dotted quarter note (B).

♩ = 64,000000

8

14

19

26

32

37

41

45

50

V.S.

WinJammer Demo

55

60