

Julien Clerc - Melissa 2

♩ = 85,000046

Flute

Alto Saxophone

Percussion

Alto Xylophone

Marimba

Vibraphone

♩ = 85,000046

Electric Bass

Soprano

Detailed description: This block contains the first system of the musical score. It features six staves. The top two staves are for Flute and Alto Saxophone, both in 4/4 time and currently silent. The Percussion staff is in 4/4 time and has a complex rhythmic pattern with many 'x' marks. The Alto Xylophone staff is in 4/4 time and has a melodic line with some rests. The Marimba and Vibraphone staves are in 4/4 time and are silent. Below the Percussion staff, there is a tempo marking '♩ = 85,000046'. The Electric Bass and Soprano staves are in 4/4 time and are silent.

Perc.

Alto Xyl.

Detailed description: This block contains the second system of the musical score. It features two staves. The Percussion staff continues its complex rhythmic pattern. The Alto Xylophone staff continues its melodic line. There are double bar lines on the left side of the staves.

Alto Sax.

Perc.

Alto Xyl.

Detailed description: This block contains the third system of the musical score. It features three staves. The Alto Saxophone staff starts with a melodic line marked with a '6' above the first measure. The Percussion staff continues its rhythmic pattern. The Alto Xylophone staff continues its melodic line. There are double bar lines on the left side of the staves.

8

Alto Sax.

Perc.

Alto Xyl.

E. Bass

Detailed description: This system contains measures 8 and 9. The Alto Saxophone part features a melodic line with eighth and sixteenth notes, including slurs and accents. The Percussion part has a complex rhythmic pattern with various note values and rests. The Alto Xylophone part plays a similar rhythmic pattern to the percussion. The E. Bass part is mostly silent, with a few notes at the end of measure 9.



10

Alto Sax.

Perc.

Alto Xyl.

Mar.

Vib.

E. Bass

Detailed description: This system contains measures 10 and 11. The Alto Saxophone part continues the melodic line from the previous system. The Percussion part maintains its rhythmic pattern. The Alto Xylophone part also continues. The Maracas part consists of chords in the bass clef. The Vibraphone part consists of chords in the treble clef. The E. Bass part has a melodic line with eighth and sixteenth notes.

12

Alto Sax. Perc. Alto Xyl. Mar. Vib. E. Bass

This musical system covers measures 12 and 13. It features six staves: Alto Saxophone (treble clef), Percussion (snare drum), Alto Xylophone (treble clef), Maracas (bass clef), Vibraphone (treble clef), and Electric Bass (bass clef). The Alto Saxophone part has a melodic line with eighth notes and rests. The Percussion part has a consistent snare drum pattern. The Alto Xylophone part has a melodic line with eighth notes. The Maracas part has a steady bass line with chords. The Vibraphone part has a steady bass line with chords. The Electric Bass part has a steady bass line with chords.



14

Alto Sax. Perc. Alto Xyl. Mar. Vib. E. Bass

This musical system covers measures 14 and 15. It features six staves: Alto Saxophone (treble clef), Percussion (snare drum), Alto Xylophone (treble clef), Maracas (bass clef), Vibraphone (treble clef), and Electric Bass (bass clef). The Alto Saxophone part has a melodic line with eighth notes and a sixteenth-note triplet in measure 14. The Percussion part has a consistent snare drum pattern. The Alto Xylophone part has a melodic line with eighth notes. The Maracas part has a steady bass line with chords. The Vibraphone part has a steady bass line with chords. The Electric Bass part has a steady bass line with chords.

16

Alto Sax.
Perc.
Alto Xyl.
Mar.
Vib.
E. Bass

This musical system covers measures 16 and 17. It features six staves: Alto Saxophone (treble clef), Percussion (drum set), Alto Xylophone (treble clef), Maracas (bass clef), Vibraphone (treble clef), and Electric Bass (bass clef). The Alto Saxophone part has a melodic line with eighth and sixteenth notes. The Percussion part shows a complex rhythmic pattern with various drum sounds. The Alto Xylophone part has a melodic line with eighth notes. The Maracas part provides a steady accompaniment with eighth notes. The Vibraphone part has a melodic line with eighth notes. The Electric Bass part has a melodic line with eighth notes.



18

Alto Sax.
Perc.
Alto Xyl.
Mar.
Vib.
E. Bass

This musical system covers measures 18 and 19. It features six staves: Alto Saxophone (treble clef), Percussion (drum set), Alto Xylophone (treble clef), Maracas (bass clef), Vibraphone (treble clef), and Electric Bass (bass clef). The Alto Saxophone part has a melodic line with eighth and sixteenth notes. The Percussion part shows a complex rhythmic pattern with various drum sounds. The Alto Xylophone part has a melodic line with eighth notes. The Maracas part provides a steady accompaniment with eighth notes. The Vibraphone part has a melodic line with eighth notes. The Electric Bass part has a melodic line with eighth notes.

20

Alto Sax. Perc. Alto Xyl. Mar. Vib. E. Bass

This musical system covers measures 20 and 21. It features six staves: Alto Saxophone (treble clef), Percussion (drum set notation), Alto Xylophone (treble clef), Maracas (bass clef), Vibraphone (treble clef), and Electric Bass (bass clef). The Alto Saxophone part has a melodic line with eighth and sixteenth notes. The Percussion part includes a snare drum pattern with accents and a cymbal pattern. The Alto Xylophone part has a rhythmic pattern of eighth notes. The Maracas part consists of a steady bass line with chords. The Vibraphone part has a harmonic accompaniment with chords and eighth notes. The Electric Bass part has a walking bass line with eighth notes.



22

Alto Sax. Perc. Alto Xyl. Mar. Vib. E. Bass

This musical system covers measures 22 and 23. It features the same six staves as the previous system. The Alto Saxophone part continues its melodic line. The Percussion part maintains its snare and cymbal patterns. The Alto Xylophone part continues its rhythmic eighth-note pattern. The Maracas part continues its bass line with chords. The Vibraphone part continues its harmonic accompaniment. The Electric Bass part continues its walking bass line.

24

Alto Sax. Perc. Alto Xyl. Mar. Vib. E. Bass

Detailed description: This system contains measures 24 and 25. The Alto Saxophone part features a melodic line with eighth and sixteenth notes. The Percussion part has a complex rhythmic pattern with various note values and rests. The Alto Xylophone part plays a similar melodic line to the saxophone. The Maracas part consists of a steady bass line with chords. The Vibraphone part has a similar bass line with chords. The Electric Bass part plays a melodic line with eighth and sixteenth notes.



26

Alto Sax. Perc. Alto Xyl. Mar. Vib. E. Bass

Detailed description: This system contains measures 26 and 27. The Alto Saxophone part has a melodic line with a sixteenth-note sextuplet in measure 26. The Percussion part continues with its rhythmic pattern. The Alto Xylophone part plays a melodic line. The Maracas part has a bass line with chords. The Vibraphone part has a bass line with chords. The Electric Bass part plays a melodic line with eighth and sixteenth notes.

28

Alto Sax. Perc. Alto Xyl. Mar. Vib. E. Bass

Detailed description: This block contains the musical notation for measures 28 and 29. The Alto Saxophone part features a melodic line with eighth and sixteenth notes. The Percussion part has a complex rhythmic pattern with various note values and rests. The Alto Xylophone part plays a steady eighth-note accompaniment. The Maracas part provides a harmonic foundation with chords and single notes. The Vibraphone part has a melodic line with eighth notes and rests. The Electric Bass part plays a simple bass line with eighth notes and rests.



30

Alto Sax. Perc. Alto Xyl. Mar. Vib. E. Bass

Detailed description: This block contains the musical notation for measures 30 and 31. The Alto Saxophone part features a melodic line with eighth notes and a triplet of eighth notes in measure 31. The Percussion part continues with its complex rhythmic pattern. The Alto Xylophone part plays a steady eighth-note accompaniment. The Maracas part provides a harmonic foundation with chords and single notes. The Vibraphone part has a melodic line with eighth notes and rests. The Electric Bass part plays a simple bass line with eighth notes and rests.

32

Alto Sax. Perc. Alto Xyl. Mar. Vib. E. Bass

This musical score covers measures 32 and 33. It features six staves: Alto Saxophone (treble clef), Percussion (drum set), Alto Xylophone (treble clef), Maracas (bass clef), Vibraphone (treble clef), and Electric Bass (bass clef). The Alto Saxophone part consists of eighth and sixteenth notes with accents. The Percussion part shows a complex rhythmic pattern with various drum sounds. The Alto Xylophone part has a melodic line with eighth notes. The Maracas part provides a steady accompaniment with chords. The Vibraphone part features chords and some melodic movement. The Electric Bass part has a walking bass line with eighth notes.



34

Alto Sax. Perc. Alto Xyl. Mar. Vib. E. Bass

This musical score covers measures 34 and 35. It features the same six staves as the previous system. The Alto Saxophone part continues with eighth and sixteenth notes. The Percussion part maintains its rhythmic pattern. The Alto Xylophone part has a melodic line with eighth notes. The Maracas part provides a steady accompaniment with chords. The Vibraphone part features chords and some melodic movement. The Electric Bass part has a walking bass line with eighth notes.

36

Alto Sax. Perc. Alto Xyl. Mar. Vib. E. Bass S.

This system contains measures 36 and 37. The Alto Saxophone part features a melodic line with eighth and sixteenth notes. The Percussion part has a complex rhythmic pattern with various note values and rests. The Alto Xylophone part plays a similar melodic line to the saxophone. The Maracas part consists of a steady bass line with chords. The Vibraphone part has a melodic line with chords. The Electric Bass part has a simple bass line. The Soprano part is silent.



38

Alto Sax. Perc. Alto Xyl. Mar. Vib. E. Bass S.

This system contains measures 38 and 39. The Alto Saxophone part has a melodic line with a triplet in measure 39. The Percussion part continues with its rhythmic pattern. The Alto Xylophone part has a melodic line. The Maracas part has a bass line with chords. The Vibraphone part has a melodic line with chords. The Electric Bass part has a bass line with a triplet in measure 39. The Soprano part has a melodic line with a triplet in measure 39.

40

Alto Sax.

Perc.

Alto Xyl.

Mar.

Vib.

E. Bass

S.

42

Alto Sax.

Perc.

Alto Xyl.

Mar.

Vib.

E. Bass

S.

44

Alto Sax.

Perc.

Alto Xyl.

Mar.

Vib.

E. Bass

S.

46

Alto Sax.

Perc.

Alto Xyl.

48

Alto Sax.

Perc.

Alto Xyl.

E. Bass

50

Alto Sax.

Perc.

Alto Xyl.

Mar.

Vib.

E. Bass



52

Alto Sax.

Perc.

Alto Xyl.

Mar.

Vib.

E. Bass

54

Alto Sax.

Perc.

Alto Xyl.

Mar.

Vib.

E. Bass

S.

This musical score page, numbered 54, features seven staves. The Alto Saxophone staff begins with a whole rest followed by a quarter note G4, a quarter note A4, and a quarter note B4. The Percussion staff shows a complex rhythmic pattern with eighth and sixteenth notes, some marked with 'x' for cymbals. The Alto Xylophone staff has a melodic line with eighth and sixteenth notes. The Maracas staff consists of a series of chords in the bass clef. The Vibraphone staff features a melodic line with eighth and sixteenth notes. The Electric Bass staff has a melodic line with eighth and sixteenth notes. The String section staff shows a sustained chord in the first measure, followed by a melodic line in the second measure.

56

Fl.

Alto Sax.

Perc.

Alto Xyl.

Mar.

Vib.

E. Bass

S.

Detailed description: This is a page of a musical score, page 14, starting at measure 56. It features eight staves. The Flute (Fl.) staff has a whole rest in the first measure and a quarter note in the second. The Alto Saxophone (Alto Sax.) staff has a whole rest in the first measure and a quarter note in the second. The Percussion (Perc.) staff has a complex rhythmic pattern with eighth notes and rests. The Alto Xylophone (Alto Xyl.) staff has a melodic line with eighth notes. The Maracas (Mar.) staff has a rhythmic pattern with eighth notes and rests. The Vibraphone (Vib.) staff has a rhythmic pattern with eighth notes and rests. The Electric Bass (E. Bass) staff has a melodic line with eighth notes. The Strings (S.) staff has a complex rhythmic pattern with eighth notes and rests.

58

Fl.

Alto Sax.

Perc.

Alto Xyl.

Mar.

Vib.

E. Bass

S.

Detailed description: This musical score page contains eight staves for measures 58 and 59. The Flute (Fl.) staff shows a whole rest in measure 58 and a quarter note in measure 59. The Alto Saxophone (Alto Sax.) staff has a whole rest in measure 58 and a quarter note in measure 59. The Percussion (Perc.) staff features a complex rhythmic pattern with various note values and rests. The Alto Xylophone (Alto Xyl.) staff has a quarter note in measure 58 and a quarter note in measure 59. The Maracas (Mar.) staff consists of a series of chords. The Vibraphone (Vib.) staff consists of a series of chords. The Electric Bass (E. Bass) staff has a quarter note in measure 58 and a quarter note in measure 59. The Strings (S.) staff has a whole rest in measure 58 and a quarter note in measure 59.

60

Fl.

Alto Sax.

Perc.

Alto Xyl.

Mar.

Vib.

E. Bass

S.

6

Detailed description: This page of a musical score contains measures 60 and 61. The score is for a jazz ensemble. The Flute (Fl.) part starts with a quarter rest in measure 60 and a sixteenth-note triplet in measure 61. The Alto Saxophone (Alto Sax.) part has a quarter rest in measure 60 and a quarter-note triplet in measure 61. The Percussion (Perc.) part features a complex rhythmic pattern with eighth and sixteenth notes and rests. The Alto Xylophone (Alto Xyl.) part has a melodic line with eighth and quarter notes. The Maracas (Mar.) part provides a steady accompaniment with eighth and quarter notes. The Vibraphone (Vib.) part plays a rhythmic accompaniment with eighth and quarter notes. The Electric Bass (E. Bass) part has a melodic line with eighth and quarter notes. The Strings (S.) part consists of a sustained chord in measure 60 and a melodic line in measure 61. A bracket labeled '6' spans the sixteenth-note triplet in the Flute part of measure 61.

62

Fl.

Alto Sax.

Perc.

Alto Xyl.

Mar.

Vib.

E. Bass

S.

Detailed description: This is a page of a musical score for a jazz ensemble. It features eight staves. The Flute (Fl.) staff starts with a rest in the first measure and plays a melodic line in the second. The Alto Saxophone (Alto Sax.) staff has a whole rest in the first measure and a melodic line in the second. The Percussion (Perc.) staff shows a complex rhythmic pattern with various notes and rests. The Alto Xylophone (Alto Xyl.) staff has a melodic line with some rests. The Maracas (Mar.) staff consists of two staves (treble and bass clef) with a rhythmic accompaniment of chords. The Vibraphone (Vib.) staff has a rhythmic accompaniment of chords. The Electric Bass (E. Bass) staff has a melodic line with a triplet in the second measure. The Strings (S.) staff has a complex rhythmic pattern with many notes.

64

Fl.

Alto Sax.

Perc.

Alto Xyl.

Mar.

Vib.

E. Bass

S.

Detailed description: This page of a musical score covers measures 64 and 65. The Flute (Fl.) part begins in measure 64 with a quarter note, followed by a rest, and then a melodic line in measure 65. The Alto Saxophone (Alto Sax.) part has a whole rest in measure 64 and a rhythmic pattern of eighth notes in measure 65. The Percussion (Perc.) part features a complex rhythmic pattern with various note values and rests. The Alto Xylophone (Alto Xyl.) part plays a melodic line with eighth notes and rests. The Maracas (Mar.) part consists of a steady accompaniment of eighth notes. The Vibraphone (Vib.) part plays a melodic line with eighth notes and rests. The Electric Bass (E. Bass) part has a melodic line with eighth notes and rests. The Strings (S.) part features a melodic line with eighth notes and rests.

66

Fl.

Alto Sax.

Perc.

Alto Xyl.

Mar.

Vib.

E. Bass

S.

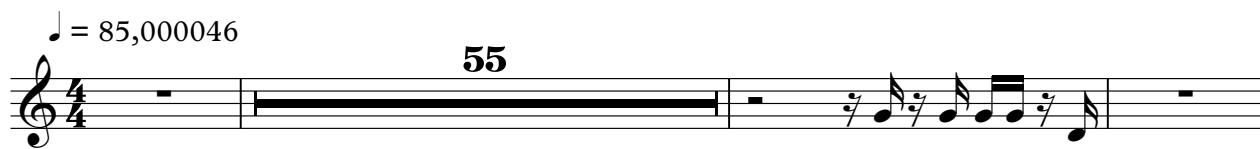
Detailed description: This page of a musical score covers measures 66, 67, and 68. The Flute (Fl.) part begins in measure 66 with a quarter note followed by a quarter rest. The Alto Saxophone (Alto Sax.) part has a whole rest in measure 66 and enters in measure 67 with a quarter note. The Percussion (Perc.) part features a complex rhythmic pattern with various note values and rests. The Alto Xylophone (Alto Xyl.) part has a rhythmic pattern of eighth and quarter notes. The Maracas (Mar.) part consists of a steady accompaniment of eighth notes. The Vibraphone (Vib.) part plays a series of chords. The Electric Bass (E. Bass) part has a bass line with a triplet in measure 68. The Strings (S.) part features a sustained chord in measure 66 and a melodic line in measure 67.

Flute

Julien Clerc - Melissa 2


♩ = 85,000046

55



59

6



63



65



Julien Clerc - Melissa 2

Alto Saxophone

♩ = 85,000046

4

8

11

14

17

20

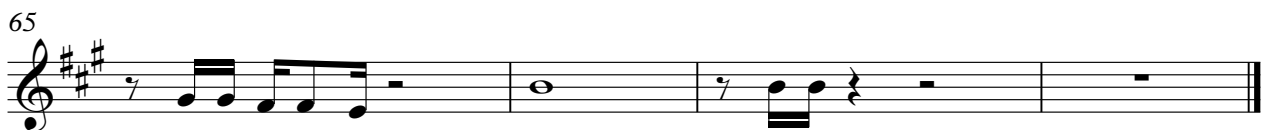
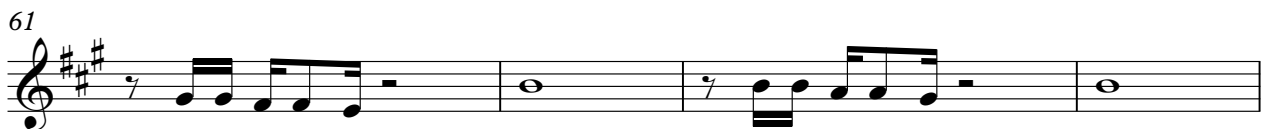
23

26

29

32

V.S.



Julien Clerc - Melissa 2

Percussion

♩ = 85,000046

4

6

8

10

12

14

16

18

20

V.S.

Musical score for Percussion, measures 22-40. The score is written on ten systems, each consisting of two staves. The top staff of each system contains a melodic line with notes, rests, and slurs. The bottom staff contains a rhythmic accompaniment with 'x' marks indicating specific rhythmic events. The measures are numbered 22, 24, 26, 28, 30, 32, 34, 36, 38, and 40. The notation is consistent across all systems, showing a repeating rhythmic pattern.

42

Two staves of music. The top staff contains a melodic line with eighth notes and rests, some beamed together. The bottom staff contains a rhythmic accompaniment with eighth notes and rests, some marked with an 'x'.

44

Two staves of music. The top staff contains a melodic line with eighth notes and rests, some beamed together. The bottom staff contains a rhythmic accompaniment with eighth notes and rests, some marked with an 'x'.

46

Two staves of music. The top staff contains a melodic line with eighth notes and rests, some beamed together. The bottom staff contains a rhythmic accompaniment with eighth notes and rests, some marked with an 'x'.

48

Two staves of music. The top staff contains a melodic line with eighth notes and rests, some beamed together. The bottom staff contains a rhythmic accompaniment with eighth notes and rests, some marked with an 'x'.

50

Two staves of music. The top staff contains a melodic line with eighth notes and rests, some beamed together. The bottom staff contains a rhythmic accompaniment with eighth notes and rests, some marked with an 'x'.

52

Two staves of music. The top staff contains a melodic line with eighth notes and rests, some beamed together. The bottom staff contains a rhythmic accompaniment with eighth notes and rests, some marked with an 'x'.

54

Two staves of music. The top staff contains a melodic line with eighth notes and rests, some beamed together. The bottom staff contains a rhythmic accompaniment with eighth notes and rests, some marked with an 'x'.

56

Two staves of music. The top staff contains a melodic line with eighth notes and rests, some beamed together. The bottom staff contains a rhythmic accompaniment with eighth notes and rests, some marked with an 'x'.

58

Two staves of music. The top staff contains a melodic line with eighth notes and rests, some beamed together. The bottom staff contains a rhythmic accompaniment with eighth notes and rests, some marked with an 'x'.

60

Two staves of music. The top staff contains a melodic line with eighth notes and rests, some beamed together. The bottom staff contains a rhythmic accompaniment with eighth notes and rests, some marked with an 'x'.

V.S.

Percussion

62

Musical notation for measures 62 and 63. The top staff contains a melodic line with eighth notes and rests, some beamed together. The bottom staff contains a bass line with eighth notes and rests, some beamed together. The notation includes various rhythmic values and rests.

64

Musical notation for measures 64 and 65. The top staff contains a melodic line with eighth notes and rests, some beamed together. The bottom staff contains a bass line with eighth notes and rests, some beamed together. The notation includes various rhythmic values and rests.

66

Musical notation for measures 66 and 67. The top staff contains a melodic line with eighth notes and rests, some beamed together. The bottom staff contains a bass line with eighth notes and rests, some beamed together. The notation includes various rhythmic values and rests.

Alto Xylophone

Julien Clerc - Melissa 2

♩ = 85,000046

5

8

11

14

17

20

23

26

29

V.S.



Alto Xylophone

62



65



Marimba

Julien Clerc - Melissa 2

♩ = 85,000046

8

13

16

19

23

27

30

33

37

V.S.

40



43



50



54



57



60



63



66



Julien Clerc - Melissa 2

Vibraphone

♩ = 85,000046

8

13

16

19

23

27

30

33

37

40

V.S.

Vibraphone

43

4

This musical staff contains measures 43 through 46. It begins with a treble clef and a key signature of one sharp (F#). The first three measures feature a complex rhythmic pattern of eighth and sixteenth notes with various accidentals. The fourth measure is a whole rest, with a large number '4' positioned above it, indicating a four-measure rest.

50

This musical staff contains measures 50 through 53. It continues the rhythmic pattern from the previous staff, featuring eighth and sixteenth notes with various accidentals.

54

This musical staff contains measures 54 through 56. It continues the rhythmic pattern from the previous staff, featuring eighth and sixteenth notes with various accidentals.

57

This musical staff contains measures 57 through 59. It continues the rhythmic pattern from the previous staff, featuring eighth and sixteenth notes with various accidentals.

60

This musical staff contains measures 60 through 62. It continues the rhythmic pattern from the previous staff, featuring eighth and sixteenth notes with various accidentals.

63

This musical staff contains measures 63 through 65. It continues the rhythmic pattern from the previous staff, featuring eighth and sixteenth notes with various accidentals.

66

This musical staff contains measures 66 through 68. It begins with the rhythmic pattern from the previous staff, but ends with two measures of whole rests.

Julien Clerc - Melissa 2

Electric Bass

♩ = 85,000046

7

12

16

19

22

25

28

31

34

38

V.S.

41



44



50



54



57



60



63



65



Julien Clerc - Melissa 2

Soprano

♩ = 85,000046

35

41

46

8

58

63

66