

Julio Iglesias - Vuela alto

♩ = 160,000000

Midicorre

Nylon Gui

Nylon Gui

Fretless

Warm Pad

Melodia

♩ = 160,000000

String

4

Midicorre

Nylon Gui

Nylon Gui

Fretless

Warm Pad

7

Midicorre

Nylon Gui

Nylon Gui

Fretless

Warm Pad

10

Midicorre

Nylon Gui

Nylon Gui

Fretless

Warm Pad

Detailed description of the first system: This system covers measures 10 and 11. The Midicorre staff features a melodic line with eighth notes and triplets. The two Nylon Gui staves provide a rhythmic accompaniment with chords and eighth notes. The Fretless staff has a bass line with a few notes. The Warm Pad staff shows sustained chords in the left hand.

12

Midicorre

Nylon Gui

Nylon Gui

Fretless

Warm Pad

Detailed description of the second system: This system covers measures 12 and 13. The Midicorre staff has a melodic line with a triplet in measure 13. The two Nylon Gui staves continue with chordal accompaniment. The Fretless staff has a bass line with a few notes. The Warm Pad staff shows sustained chords in the left hand.

15

Midicorre

Nylon Gui

Nylon Gui

Fretless

Warm Pad

18

Nylon Gui

Nylon Gui

Fretless

Warm Pad

Melodia

21

Nylon Gui

Nylon Gui

Fretless

Warm Pad

Melodia

24

Nylon Gui

Nylon Gui

Fretless

Warm Pad

Melodia

27

Nylon Gui

Nylon Gui

Fretless

Warm Pad

Melodia

30

Nylon Gui

Nylon Gui

Fretless

Warm Pad

Melodia

33

Nylon Gui

Nylon Gui

Fretless

Warm Pad

Melodia

String

Detailed description: This system covers measures 33, 34, and 35. The two Nylon Gui parts play a rhythmic pattern of chords with eighth notes. The Fretless part has a bass line with a half note in measure 33, a dotted half note in measure 34, and a quarter note in measure 35. The Warm Pad part has a sustained chord in measure 33, a half note in measure 34, and a quarter note in measure 35. The Melodia part has a melodic line with eighth and quarter notes. The String part is silent in measures 33 and 34, then plays a chord in measure 35.

36

Nylon Gui

Nylon Gui

Fretless

Warm Pad

Melodia

String

Detailed description: This system covers measures 36, 37, and 38. The two Nylon Gui parts continue with the rhythmic chord pattern. The Fretless part has a bass line with a half note in measure 36, a dotted half note in measure 37, and a quarter note in measure 38. The Warm Pad part has a sustained chord in measure 36, a half note in measure 37, and a quarter note in measure 38. The Melodia part has a melodic line with eighth and quarter notes. The String part is silent in measures 36 and 37, then plays a chord in measure 38.

39

Nylon Gui

Nylon Gui

Fretless

Warm Pad

Melodia

String

42

Nylon Gui

Nylon Gui

Fretless

Warm Pad

Melodia

String

45

Nylon Gui

Nylon Gui

Fretless

Warm Pad

Melodia

String

48

Nylon Gui

Nylon Gui

Fretless

Warm Pad

Melodia

String

51

Nylon Gui

Nylon Gui

Fretless

Warm Pad

Melodia

String

54

Nylon Gui

Nylon Gui

Fretless

Warm Pad

Melodia

String

57

Nylon Gui

Nylon Gui

Fretless

Warm Pad

Melodia

String

60

Nylon Gui

Nylon Gui

Fretless

Warm Pad

Melodia

String

63

Nylon Gui

Nylon Gui

Fretless

Warm Pad

Melodia

String

66

Nylon Gui

Nylon Gui

Fretless

Warm Pad

Melodia

String

69

Nylon Gui

Nylon Gui

Fretless

Warm Pad

Melodia

String

Detailed description of the musical score: The score is for a guitar and string instrument. It begins at measure 69. The first two staves, both labeled 'Nylon Gui', play a complex, rhythmic chordal pattern. The third staff, labeled 'Fretless', plays a bass line with notes like G#2, Bb2, and G#2. The fourth staff, labeled 'Warm Pad', plays three sustained chords: G#2, Bb2, and G#2. The fifth staff, labeled 'Melodia', plays a melodic line with notes like G#2, Bb2, and G#2. The bottom staff, labeled 'String', plays a few notes with a long sustain line.

72

Midicorre

Nylon Gui

Nylon Gui

Fretless

Warm Pad

Melodia

String

74

Midicorre

Nylon Gui

Nylon Gui

Fretless

Warm Pad

77

Midicorre

Nylon Gui

Nylon Gui

Fretless

Warm Pad

80

Midicorre

Nylon Gui

Nylon Gui

Fretless

Warm Pad

83

Midicorre

Nylon Gui

Nylon Gui

Fretless

Warm Pad

86

Midicorre

Nylon Gui

Nylon Gui

Fretless

Warm Pad

89

Nylon Gui

Nylon Gui

Fretless

Warm Pad

Melodia

String

Detailed description: This system of musical notation covers measures 89, 90, and 91. It features five staves. The top two staves, both labeled 'Nylon Gui', contain complex chordal textures with many beamed notes and slurs. The 'Fretless' staff shows a bass line with notes on a whole, half, and quarter note. The 'Warm Pad' staff has sustained chords with long note heads. The 'Melodia' staff contains a melodic line with eighth and sixteenth notes. The 'String' staff has a few notes, including a long note in measure 91.

92

Nylon Gui

Nylon Gui

Fretless

Warm Pad

Melodia

String

Detailed description: This system of musical notation covers measures 92, 93, and 94. It features five staves. The top two staves, both labeled 'Nylon Gui', continue with complex chordal textures. The 'Fretless' staff shows a bass line with notes on a whole, half, and quarter note. The 'Warm Pad' staff has sustained chords with long note heads. The 'Melodia' staff contains a melodic line with eighth and sixteenth notes. The 'String' staff has a few notes, including a long note in measure 94.

95

Nylon Gui

Nylon Gui

Fretless

Warm Pad

Melodia

String

97

Nylon Gui

Nylon Gui

Fretless

Warm Pad

Melodia

String

100

Nylon Gui

Nylon Gui

Fretless

Warm Pad

Melodia

String

Detailed description: This system of musical notation covers measures 100 to 102. It features five staves. The top two staves, labeled 'Nylon Gui', are in treble clef with a key signature of one sharp (F#) and a 4/4 time signature. They contain complex chordal textures with many beamed eighth notes. The third staff, 'Fretless', is in bass clef and contains a simple bass line with a few notes. The fourth staff, 'Warm Pad', is in treble clef and contains sustained chords with a long note value. The fifth staff, 'Melodia', is in treble clef and contains a melodic line with various note values and rests. The bottom staff, 'String', is in treble clef and contains sustained chords with a long note value.

103

Nylon Gui

Nylon Gui

Fretless

Warm Pad

Melodia

String

Detailed description: This system of musical notation covers measures 103 to 105. It features five staves. The top two staves, labeled 'Nylon Gui', are in treble clef with a key signature of one flat (Bb) and a 4/4 time signature. They contain complex chordal textures with many beamed eighth notes. The third staff, 'Fretless', is in bass clef and contains a simple bass line with a few notes. The fourth staff, 'Warm Pad', is in treble clef and contains sustained chords with a long note value. The fifth staff, 'Melodia', is in treble clef and contains a melodic line with various note values and rests. The bottom staff, 'String', is in treble clef and contains sustained chords with a long note value.

106

This system contains measures 106, 107, and 108. It features five staves: two Nylon Guitars, a Fretless bass, a Warm Pad, a Melodia, and a String. The Nylon Guitars play a melodic line with a sharp and a flat, followed by a series of chords. The Fretless bass provides a bass line with a sharp and a flat. The Warm Pad and String parts play sustained chords.

109

This system contains measures 109, 110, and 111. It features five staves: two Nylon Guitars, a Fretless bass, a Warm Pad, a Melodia, and a String. The Nylon Guitars play a melodic line with a sharp and a flat, followed by a series of chords. The Fretless bass provides a bass line with a sharp and a flat. The Warm Pad and String parts play sustained chords.

112

This system of music covers measures 112 to 114. It features five staves: two for Nylon Guitar (treble clef), one for Fretless guitar (bass clef), one for Warm Pad (treble clef), one for Melodia (treble clef), and one for String (treble clef). The Nylon Guitar parts consist of rhythmic chordal patterns. The Fretless part has a simple melodic line. The Warm Pad part has sustained chords. The Melodia part has a more active melodic line. The String part has sustained chords.

115

This system of music covers measures 115 to 117. It features five staves: two for Nylon Guitar (treble clef), one for Fretless guitar (bass clef), one for Warm Pad (treble clef), one for Melodia (treble clef), and one for String (treble clef). The Nylon Guitar parts continue with rhythmic chordal patterns. The Fretless part has a simple melodic line. The Warm Pad part has sustained chords. The Melodia part has a more active melodic line. The String part has sustained chords.

118

Nylon Gui

Nylon Gui

Fretless

Warm Pad

Melodia

String

121

Nylon Gui

Nylon Gui

Fretless

Warm Pad

Melodia

String

124

Nylon Gui

Nylon Gui

Fretless

Warm Pad

Melodia

128

Nylon Gui

Nylon Gui

Fretless

Warm Pad

Melodia

131

Nylon Gui

Nylon Gui

Fretless

Warm Pad

Melodia

134

Nylon Gui

Nylon Gui

Fretless

Warm Pad

Melodia

137

Nylon Gui

Nylon Gui

Fretless

Warm Pad

Melodia

140

Nylon Gui

Nylon Gui

Fretless

Warm Pad

Melodia

143

Nylon Gui

Nylon Gui

Fretless

Warm Pad

Melodia

146

Nylon Gui

Nylon Gui

Fretless

Warm Pad

Melodia

149

Nylon Gui

Nylon Gui

Fretless

Warm Pad

Melodia

152

Nylon Gui

Nylon Gui

Fretless

Warm Pad

Melodia

155

Nylon Gui

Nylon Gui

Fretless

Warm Pad

Melodia

158

Nylon Gui

Nylon Gui

Fretless

Warm Pad

Melodia

161

Nylon Gui

Nylon Gui

Fretless

Warm Pad

Melodia

164

Nylon Gui

Nylon Gui

Fretless

Warm Pad

Melodia

167

Nylon Gui

Nylon Gui

Fretless

Warm Pad

Melodia

170

Nylon Gui

Nylon Gui

Fretless

Warm Pad

Melodia

173

Nylon Gui

Nylon Gui

Fretless

Warm Pad

Melodia

176

Nylon Gui

Nylon Gui

Fretless

Warm Pad

Melodia

179

Nylon Gui

Nylon Gui

Fretless

Warm Pad

Melodia

182

Nylon Gui

Nylon Gui

Fretless

Warm Pad

Melodia

Midicorre

Julio Iglesias - Vuela alto

♩ = 160,000000



6



11



15



73



77



82



86



♩ = 160,000000

3

7

11

15

19

23

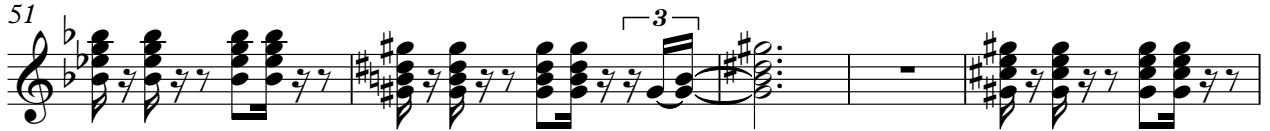
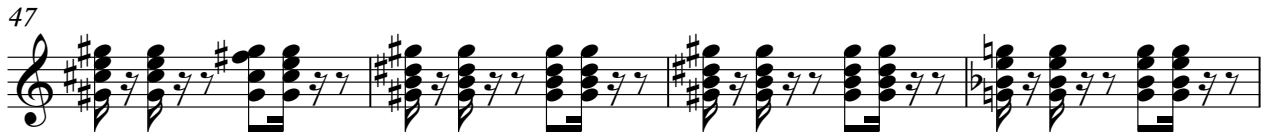
27

31

35

39

Detailed description: This is a guitar score for the song 'Vuela alto' by Julio Iglesias, arranged for nylon guitar. The music is in 6/8 time and begins with a tempo marking of 160,000000. The first measure is a triplet of eighth notes. The score consists of ten staves of music, each starting with a measure number (3, 7, 11, 15, 19, 23, 27, 31, 35, 39). The music is primarily composed of chords with eighth-note patterns. The key signature changes from one flat (B-flat) to two sharps (F# and C#) and back to one flat (B-flat) throughout the piece.



84

88

92

96

100

104

108

112

116

120

124



Musical notation for measure 124, featuring a treble clef, a key signature of two sharps (F# and C#), and a series of chords with rhythmic notation.

129



Musical notation for measure 129, featuring a treble clef, a key signature of one flat (Bb), and a series of chords with rhythmic notation.

133



Musical notation for measure 133, featuring a treble clef, a key signature of two sharps (F# and C#), and a series of chords with rhythmic notation.

137



Musical notation for measure 137, featuring a treble clef, a key signature of one flat (Bb), and a series of chords with rhythmic notation.

141



Musical notation for measure 141, featuring a treble clef, a key signature of two sharps (F# and C#), and a series of chords with rhythmic notation.

145



Musical notation for measure 145, featuring a treble clef, a key signature of two sharps (F# and C#), and a series of chords with rhythmic notation.

149



Musical notation for measure 149, featuring a treble clef, a key signature of one flat (Bb), and a series of chords with rhythmic notation.

153



Musical notation for measure 153, featuring a treble clef, a key signature of two sharps (F# and C#), and a series of chords with rhythmic notation.

157



Musical notation for measure 157, featuring a treble clef, a key signature of one flat (Bb), and a series of chords with rhythmic notation.

161

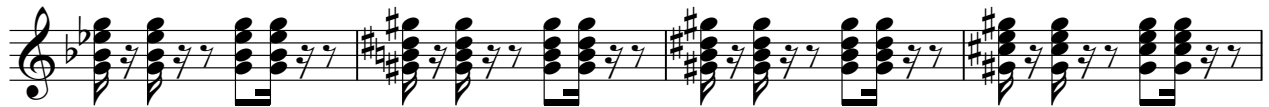


Musical notation for measure 161, featuring a treble clef, a key signature of two sharps (F# and C#), and a series of chords with rhythmic notation.

165



169



173



177



181



♩ = 160,000000

3

7

11

15

19

23

27

31

35

39

Detailed description: This is a guitar score for the song 'Vuela alto' by Julio Iglesias, arranged for nylon guitar. The music is in 6/8 time and begins with a tempo marking of 160,000000. The first measure is a triplet of eighth notes. The score consists of ten staves of music, each starting with a measure number (3, 7, 11, 15, 19, 23, 27, 31, 35, 39). The music is primarily composed of chords with eighth-note patterns. The key signature changes from one flat (Bb) to two sharps (F#C#) and back to one flat (Bb) throughout the piece.

43



47



51



56



60



64



68



72



77



81



85

Measure 85: Treble clef, key signature of two flats (Bb, Eb). The staff contains a sequence of chords: Bb7, Eb7, Bb7, Eb7, F#7, Bb7, F#7, Bb7, Eb7, F#7, Bb7, Eb7. Each chord is followed by a slash and a tilde (~) indicating a strumming pattern.

89

Measure 89: Treble clef, key signature of three sharps (F#, C#, G#). The staff contains a sequence of chords: F#7, C#7, G#7, F#7, C#7, G#7, F#7, C#7, G#7, F#7, C#7, G#7. Each chord is followed by a slash and a tilde (~) indicating a strumming pattern.

93

Measure 93: Treble clef, key signature of three sharps (F#, C#, G#). The staff contains a sequence of chords: F#7, C#7, G#7, F#7, C#7, G#7, Bb7, Eb7, Bb7, Eb7, Bb7, Eb7. Each chord is followed by a slash and a tilde (~) indicating a strumming pattern.

97

Measure 97: Treble clef, key signature of three sharps (F#, C#, G#). The staff contains a sequence of chords: F#7, C#7, G#7, F#7, C#7, G#7, F#7, C#7, G#7, F#7, C#7, G#7. Each chord is followed by a slash and a tilde (~) indicating a strumming pattern.

101

Measure 101: Treble clef, key signature of three sharps (F#, C#, G#). The staff contains a sequence of chords: F#7, C#7, G#7, F#7, C#7, G#7, Bb7, Eb7, Bb7, Eb7, Bb7, Eb7. Each chord is followed by a slash and a tilde (~) indicating a strumming pattern.

105

Measure 105: Treble clef, key signature of three sharps (F#, C#, G#). The staff contains a sequence of chords: F#7, C#7, G#7, F#7, C#7, G#7, F#7, C#7, G#7, F#7, C#7, G#7. Each chord is followed by a slash and a tilde (~) indicating a strumming pattern.

109

Measure 109: Treble clef, key signature of three sharps (F#, C#, G#). The staff contains a sequence of chords: F#7, C#7, G#7, F#7, C#7, G#7, F#7, C#7, G#7, F#7, C#7, G#7. Each chord is followed by a slash and a tilde (~) indicating a strumming pattern.

113

Measure 113: Treble clef, key signature of two flats (Bb, Eb). The staff contains a sequence of chords: Bb7, Eb7, Bb7, Eb7, F#7, Bb7, F#7, Bb7, Eb7, F#7, Bb7, Eb7. Each chord is followed by a slash and a tilde (~) indicating a strumming pattern.

117

Measure 117: Treble clef, key signature of three sharps (F#, C#, G#). The staff contains a sequence of chords: F#7, C#7, G#7, F#7, C#7, G#7, F#7, C#7, G#7, F#7, C#7, G#7. Each chord is followed by a slash and a tilde (~) indicating a strumming pattern.

121

Measure 121: Treble clef, key signature of two flats (Bb, Eb). The staff contains a sequence of chords: Bb7, Eb7, Bb7, Eb7, F#7, Bb7, F#7, Bb7, Eb7, F#7, Bb7, Eb7. Each chord is followed by a slash and a tilde (~) indicating a strumming pattern. The measure concludes with a triplet of eighth notes (F#, G#, A) and a whole note chord (F#7).

126

130

134

138

142

146

150

154

158

162

166



170



174



178



181



Fretless

Julio Iglesias - Vuela alto

♩ = 160,000000

2



11



18



26



34



42



51



60



68



75



83



91



99



107



115



124



132



140



147



155



163



171



178



♩ = 160,000000

3

13

23

33

43

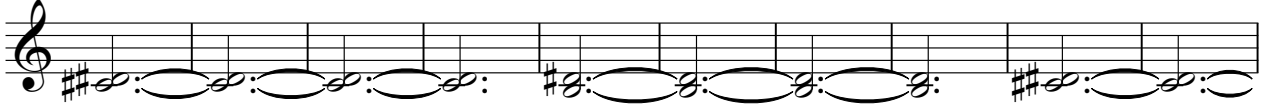
53

63

68

2

75



85



95



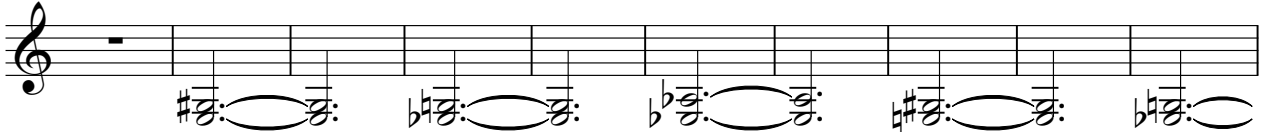
105



115



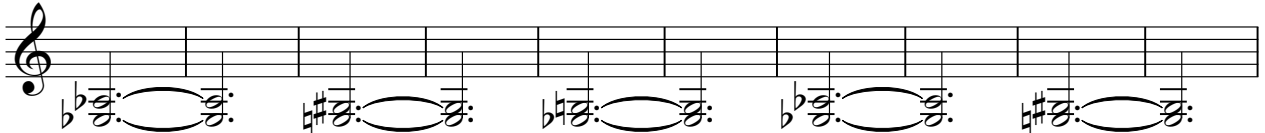
125



135



144



154



163



Julio Iglesias - Vuela alto

Melodia

♩ = 160,000000

17

21

25

30

35

40

45

49

54

59

63



68



73



92



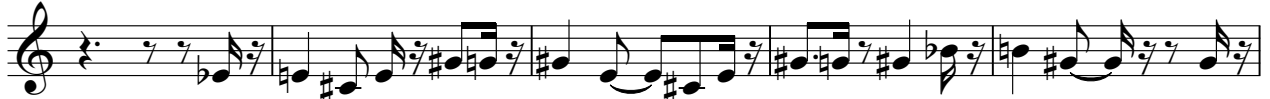
96



101



106



111



116



120



174



179



182



Julio Iglesias - Vuela alto

String

♩ = 160,000000

34

40

49

59

68

92

100

108

116

2

18

63