

KravitzLenni - areugo

♩ = 127,968880

Percussion

Electric Guitar

Electric Guitar

Fretless Electric Bass

Lead 1 (Square)

5

Perc.

E. Gtr.

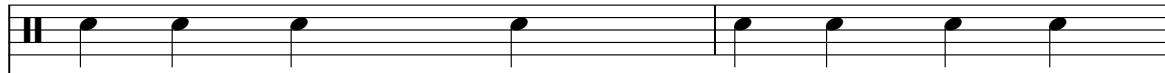
7

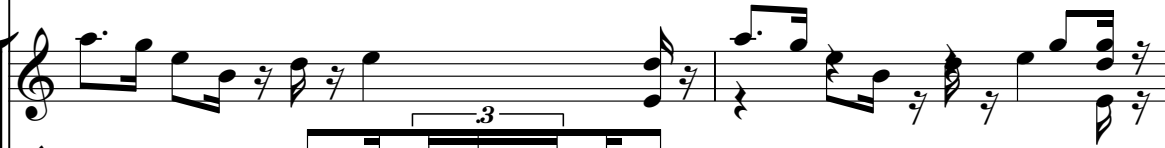
Perc.


E. Gtr.

E. Gtr.

(P)1993 International Music Publications Ltd(C)1993 Barnes Music Engraving Ltd
(P)1993 International Music Publications Ltd(C)1993 Barnes Music Engraving Ltd

Perc. 

E. Gtr. 


E. Gtr. 

Perc. 

E. Gtr. 

E. Gtr. 

E. Bass 

Perc. 

E. Gtr. 

E. Gtr. 

E. Bass 

13

Perc.

E. Gtr.

E. Gtr.

E. Bass

3

14

Perc.

E. Gtr.

E. Gtr.

E. Bass

15

Perc.

E. Gtr.

E. Gtr.

E. Bass

3

16

Perc.

E. Gtr.

E. Gtr.

E. Bass

Measures 16-17. Percussion (Perc.) plays a continuous eighth-note pattern. Electric guitar 1 (E. Gtr.) plays a descending eighth-note line. Electric guitar 2 (E. Gtr.) plays a descending eighth-note line. Electric bass (E. Bass) plays a descending eighth-note line.

17

Perc.

E. Gtr.

E. Gtr.

E. Bass

Measures 17-18. Percussion (Perc.) plays a continuous eighth-note pattern. Electric guitar 1 (E. Gtr.) plays a descending eighth-note line. Electric guitar 2 (E. Gtr.) plays a descending eighth-note line. Electric bass (E. Bass) plays a descending eighth-note line.

18

Perc.

E. Gtr.

E. Gtr.

E. Bass

Measures 18-19. Percussion (Perc.) plays a continuous eighth-note pattern. Electric guitar 1 (E. Gtr.) plays a descending eighth-note line. Electric guitar 2 (E. Gtr.) plays a descending eighth-note line. Electric bass (E. Bass) plays a descending eighth-note line.

19

Perc.

E. Gtr.

E. Gtr.

E. Bass

Lead 1

3

21

Perc.

E. Gtr.

E. Bass

Lead 1

24

Perc.

E. Gtr.

E. Bass

Lead 1

Measures 24-26: Percussion (Perc.) plays a steady eighth-note pattern. Electric guitar (E. Gtr.) and electric bass (E. Bass) play a syncopated eighth-note rhythm. Lead 1 (Lead 1) has a melodic line with a long note in measure 25.

27

Perc.

E. Gtr.

E. Gtr.

E. Bass

Lead 1

Measures 27-29: Percussion (Perc.) continues the eighth-note pattern. Electric guitar 1 (E. Gtr.) has a rest in measure 27 and then plays a syncopated eighth-note rhythm. Electric guitar 2 (E. Gtr.) plays a melodic line. Electric bass (E. Bass) continues the syncopated eighth-note rhythm. Lead 1 (Lead 1) has a melodic line with a long note in measure 28.

30

Perc.

E. Gtr.

E. Gtr.

E. Bass

Lead 1

Measures 30-31. The score is in 4/4 time. Measure 30 features a key signature change to one flat (Bb). Measure 31 features a time signature change to 7/8.

32

Perc.

E. Gtr.

E. Bass

Lead 1

Measures 32-33. The score is in 4/4 time. Measure 32 features a key signature change to one flat (Bb). Measure 33 features a time signature change to 4/4.

35

Perc.

E. Gtr.

E. Bass

Lead 1

Measures 35-37. Percussion: continuous eighth-note pattern. Electric Guitar: melodic line with a key change to D major at measure 37. Electric Bass: walking bass line. Lead 1: silent.

38

Perc.

E. Gtr.

E. Gtr.

E. Bass

Lead 1

Measures 38-40. Percussion: continuous eighth-note pattern. Electric Guitars: complex, syncopated rhythm. Electric Bass: walking bass line with a triplet at measure 40. Lead 1: melodic line.

40

Perc.

E. Gtr.

E. Bass

Lead 1

Measures 40-42. Percussion: Measure 40 has a complex pattern of eighth and sixteenth notes. Measure 41 has a half note rest followed by eighth notes. Measure 42 has quarter notes. Electric guitar: Measure 40 has a chord with a sharp sign. Measure 41 has a half note chord. Measure 42 has eighth notes. Electric bass: Measure 40 has eighth notes. Measure 41 has a half note with a sharp sign. Measure 42 has eighth notes. Lead 1: Measure 40 has a quarter note, eighth notes, and a half note. Measure 41 has a half note. Measure 42 has a whole note.

43

Perc.

E. Gtr.

E. Gtr.

Measures 43-45. Percussion: Measures 43-45 have a steady quarter note pattern. Electric guitar (top): Measure 43 has a half note rest. Measure 44 has eighth notes. Measure 45 has eighth notes with a triplet. Electric guitar (bottom): Measure 43 has eighth notes. Measure 44 has a triplet of eighth notes. Measure 45 has eighth notes.

45

Perc.

E. Gtr.

E. Gtr.

E. Bass

Measures 45-47. Percussion: Measures 45-47 have a steady quarter note pattern. Electric guitar (top): Measure 45 has eighth notes. Measure 46 has eighth notes with a triplet. Measure 47 has eighth notes. Electric guitar (bottom): Measure 45 has eighth notes. Measure 46 has a triplet of eighth notes. Measure 47 has eighth notes. Electric bass: Measure 45 has a half note rest. Measure 46 has eighth notes. Measure 47 has eighth notes.

46

Perc.

E. Gtr.

E. Gtr.

E. Bass

Measures 46-47. Percussion (Perc.) plays a continuous eighth-note pattern. Electric guitar 1 (E. Gtr.) plays a descending line. Electric guitar 2 (E. Gtr.) plays a descending line with a triplet. Electric bass (E. Bass) plays a descending line.

47

Perc.

E. Gtr.

E. Gtr.

E. Bass

Measures 48-49. Percussion (Perc.) plays a continuous eighth-note pattern. Electric guitar 1 (E. Gtr.) plays a descending line. Electric guitar 2 (E. Gtr.) plays a descending line with a triplet. Electric bass (E. Bass) plays a descending line.

48

Perc.

E. Gtr.

E. Gtr.

E. Bass

Measures 50-51. Percussion (Perc.) plays a continuous eighth-note pattern. Electric guitar 1 (E. Gtr.) plays a descending line. Electric guitar 2 (E. Gtr.) plays a descending line with a triplet. Electric bass (E. Bass) plays a descending line.

49

Perc.

E. Gtr.

E. Gtr.

E. Bass

Lead 1

3

51

Perc.

E. Gtr.

E. Bass

Lead 1

54

Perc.

E. Gtr.

E. Bass

Lead 1

Measures 54-56. Percussion (Perc.) plays a steady eighth-note pattern. Electric guitar (E. Gtr.) and electric bass (E. Bass) play a syncopated eighth-note rhythm. Lead 1 (Lead 1) has a melodic line with a long note in measure 55.

57

Perc.

E. Gtr.

E. Gtr.

E. Bass

Lead 1

Measures 57-59. Percussion (Perc.) continues the eighth-note pattern. Two electric guitar parts (E. Gtr.) and electric bass (E. Bass) play a syncopated eighth-note rhythm. Lead 1 (Lead 1) has a melodic line with a long note in measure 58.

60

Perc.

E. Gtr.

E. Gtr.

E. Bass

Lead 1

61

61

Perc.

E. Gtr.

E. Gtr.

E. Bass

Lead 1

62

62

Perc.

E. Gtr.

E. Bass

Lead 1

Measures 62-64: Percussion (Perc.) plays a continuous eighth-note pattern. Electric Guitar (E. Gtr.) plays a melodic line with eighth notes and rests. Electric Bass (E. Bass) plays a rhythmic line with eighth notes and rests. Lead 1 plays a melodic line with eighth notes and rests.

65

Perc.

E. Gtr.

E. Bass

Lead 1

Measures 65-67: Percussion (Perc.) plays a continuous eighth-note pattern. Electric Guitar (E. Gtr.) plays a melodic line with eighth notes and rests. Electric Bass (E. Bass) plays a rhythmic line with eighth notes and rests. Lead 1 plays a melodic line with eighth notes and rests.

68

Perc.

E. Gtr.

E. Gtr.

E. Bass

Lead 1

3

70

Perc.

E. Gtr.

E. Bass

Lead 1

73

Perc.

E. Gtr.

75

Perc.

E. Gtr.

77

Perc.

E. Gtr.

E. Bass

79

Perc.

E. Gtr.

E. Gtr.

E. Bass

81

Perc.

E. Gtr.

E. Gtr.

E. Bass

82

83

Perc.

E. Gtr.

E. Gtr.

E. Bass

84

85

Perc.

E. Gtr.

E. Gtr.

E. Bass

86

87

Perc.

E. Gtr.

E. Gtr.

E. Bass

Measures 87-88. Percussion (Perc.) plays a steady eighth-note pattern. The first Electric Guitar (E. Gtr.) plays a melodic line with eighth and sixteenth notes. The second Electric Guitar (E. Gtr.) plays a complex, fast-moving line with many beamed sixteenth notes. The Electric Bass (E. Bass) plays a simple eighth-note bass line.

89

Perc.

E. Gtr.

E. Gtr.

E. Bass

Measures 89-90. Percussion (Perc.) continues the eighth-note pattern. The first Electric Guitar (E. Gtr.) has a melodic line with a triplet of eighth notes in measure 90. The second Electric Guitar (E. Gtr.) continues its complex sixteenth-note line. The Electric Bass (E. Bass) continues the eighth-note bass line.

91

Perc.

E. Gtr.

E. Gtr.

E. Bass

Measures 91-92. Percussion (Perc.) continues the eighth-note pattern. The first Electric Guitar (E. Gtr.) plays a melodic line with eighth and sixteenth notes. The second Electric Guitar (E. Gtr.) continues its complex sixteenth-note line. The Electric Bass (E. Bass) continues the eighth-note bass line.

93

Perc.

E. Gtr.

E. Gtr.

E. Bass

Measures 93-94. Percussion: eighth-note pattern. E. Gtr. 1: melodic line with a triplet in measure 94. E. Gtr. 2: complex rhythmic pattern with triplets. E. Bass: eighth-note line.

95

Perc.

E. Gtr.

E. Gtr.

E. Bass

Measures 95-96. Percussion: eighth-note pattern with 'x' marks. E. Gtr. 1: melodic line. E. Gtr. 2: complex rhythmic pattern. E. Bass: eighth-note line.

97

Perc.

E. Gtr.

E. Gtr.

E. Bass

Measures 97-98. Percussion: eighth-note pattern with 'x' marks. E. Gtr. 1: melodic line. E. Gtr. 2: complex rhythmic pattern with a triplet in measure 98. E. Bass: eighth-note line with a triplet in measure 98.

98

Perc.

E. Gtr.

E. Gtr.

E. Bass

Measures 98-99. Percussion (Perc.) plays a continuous eighth-note pattern. Electric guitar 1 (E. Gtr.) plays a descending line. Electric guitar 2 (E. Gtr.) plays a descending line with a triplet at the end. Electric bass (E. Bass) plays a descending line.

99

Perc.

E. Gtr.

E. Gtr.

E. Bass

Measures 99-100. Percussion (Perc.) plays a continuous eighth-note pattern. Electric guitar 1 (E. Gtr.) plays a descending line. Electric guitar 2 (E. Gtr.) plays a descending line with a triplet at the end. Electric bass (E. Bass) plays a descending line.

100

Perc.

E. Gtr.

E. Gtr.

E. Bass

Measures 100-101. Percussion (Perc.) plays a continuous eighth-note pattern. Electric guitar 1 (E. Gtr.) plays a descending line. Electric guitar 2 (E. Gtr.) plays a descending line with a triplet at the end. Electric bass (E. Bass) plays a descending line.

101

Perc.

E. Gtr.

E. Gtr.

E. Bass

3

102

Perc.

E. Gtr.

E. Gtr.

E. Bass

103

Perc.

E. Gtr.

E. Gtr.

E. Bass

3

2/4

105

Perc.

E. Gtr.

E. Bass

Measure 105: Perc. has a snare on 1 and 3, hi-hat on 2 and 4. E. Gtr. has a double bar line and a long sustain. E. Bass has a bass line with eighth and sixteenth notes.

Measure 106: Perc. has a snare on 1 and 3, hi-hat on 2 and 4. E. Gtr. has a double bar line and a long sustain. E. Bass has a bass line with eighth and sixteenth notes.

Measure 107: Perc. has a snare on 1 and 3, hi-hat on 2 and 4. E. Gtr. has a double bar line and a long sustain. E. Bass has a bass line with eighth and sixteenth notes.

108

Perc.

E. Gtr.

E. Gtr.

E. Bass

Lead 1

Measure 108: Perc. has a snare on 1 and 3, hi-hat on 2 and 4. E. Gtr. has a double bar line and a long sustain. E. Bass has a bass line with eighth and sixteenth notes. Lead 1 has a double bar line and a long sustain.

Measure 109: Perc. has a snare on 1 and 3, hi-hat on 2 and 4. E. Gtr. has a double bar line and a long sustain. E. Bass has a bass line with eighth and sixteenth notes. Lead 1 has a double bar line and a long sustain.

Measure 110: Perc. has a snare on 1 and 3, hi-hat on 2 and 4. E. Gtr. has a double bar line and a long sustain. E. Bass has a bass line with eighth and sixteenth notes. Lead 1 has a double bar line and a long sustain.

110

Perc.

E. Gtr.

E. Gtr.

E. Bass

Lead 1

Measure 110: Percussion has a hi-hat pattern of eighth notes. Electric guitars play a sustained chord of G4, A4, B4, and C5. Electric bass plays a walking line of eighth notes: G2, A2, B2, C3, D3, E3, F3, G3. Lead 1 has a melodic line: G4, A4, B4, C5, D5, E5, F5, G5.

Measure 111: Percussion has a hi-hat pattern of eighth notes. Electric guitars play a sustained chord of G4, A4, B4, and C5. Electric bass plays a walking line of eighth notes: G2, A2, B2, C3, D3, E3, F3, G3. Lead 1 has a melodic line: G4, A4, B4, C5, D5, E5, F5, G5.

112

E. Gtr.

E. Gtr.

Lead 1

Measure 112: Electric guitars play a sustained chord of G4, A4, B4, and C5. Lead 1 has a melodic line: G4, A4, B4, C5, D5, E5, F5, G5.

Measure 113: Electric guitars play a sustained chord of G4, A4, B4, and C5. Lead 1 has a melodic line: G4, A4, B4, C5, D5, E5, F5, G5.

Measure 114: Electric guitars play a sustained chord of G4, A4, B4, and C5. Lead 1 has a melodic line: G4, A4, B4, C5, D5, E5, F5, G5.

Measure 115: Electric guitars play a sustained chord of G4, A4, B4, and C5. Lead 1 has a melodic line: G4, A4, B4, C5, D5, E5, F5, G5.

Percussion

KravitzLenni - areugo

♩ = 127,968880

The image displays a percussion score for the piece 'areugo' by KravitzLenni. The score is written on a single staff with a 4/4 time signature. It begins with a tempo marking of 127,968880. The notation includes various rhythmic patterns, including eighth and sixteenth notes, rests, and dynamic markings. The score is divided into measures, with measure numbers 7, 12, 13, 14, 16, 17, 18, 19, and 22 indicated. The notation is complex, featuring many beamed notes and rests, suggesting a fast and intricate rhythmic piece.

(P)1993 International Music Publications Ltd(C)1993 Barnes Music Engraving Ltd
(P)1993 International Music Publications Ltd(C)1993 Barnes Music Engraving Ltd

V.S.

26

30

33

37

40

45

47

48

49

51

55

59

62

66

70

75

80

84

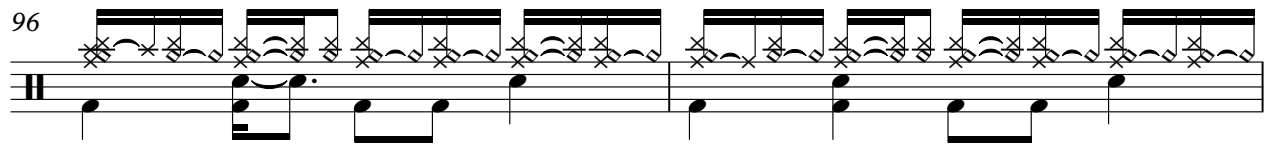
88

92

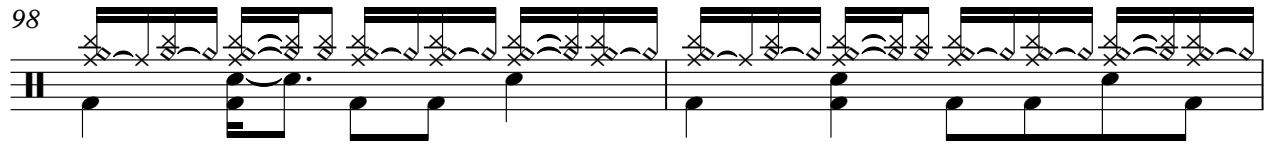
V.S.

The image displays a percussion score for measures 55 through 92. The notation is on a single staff with a double bar line at the start. The music consists of various rhythmic patterns, primarily using eighth and quarter notes, some beamed together. Measures 59, 62, 66, 80, and 88 feature asterisks (*) above the notes, which may denote specific percussion sounds or techniques. The score concludes with a double bar line and the marking 'V.S.' (Verso).

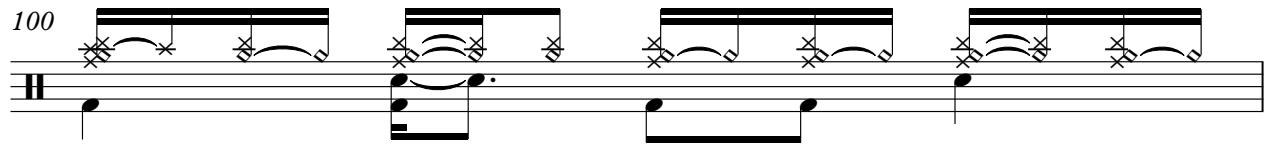
96



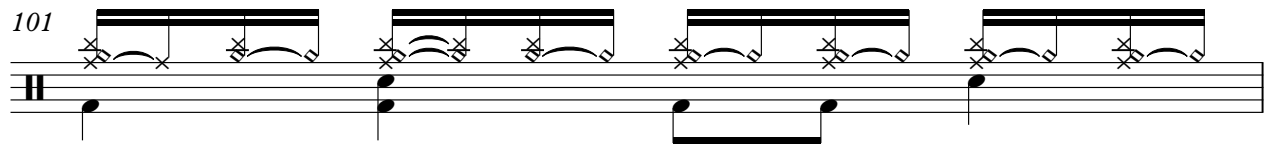
98



100



101



102



103



106



109



♩ = 127,968880

7

10

13

16

19

8

29

32

6

40

4

47

8

Sheet music for Electric Guitar, measures 58 to 102. The music is written in treble clef with a key signature of one flat (B-flat). The notation includes various rhythmic values, accidentals, and articulation marks.

Measures 58-60: A repeating rhythmic pattern of eighth and sixteenth notes with slurs and ties.

Measure 61: Features a triplet of eighth notes, followed by eighth and sixteenth notes, and a triplet of eighth notes. A measure rest for 6 measures follows.

Measure 68: Features a complex rhythmic pattern with slurs and ties, followed by a measure rest for 10 measures.

Measure 80: A melodic line with slurs and ties.

Measure 84: A melodic line with slurs and ties.

Measure 88: A melodic line with slurs and ties, including a triplet of eighth notes.

Measure 92: A melodic line with slurs and ties, including a triplet of eighth notes.

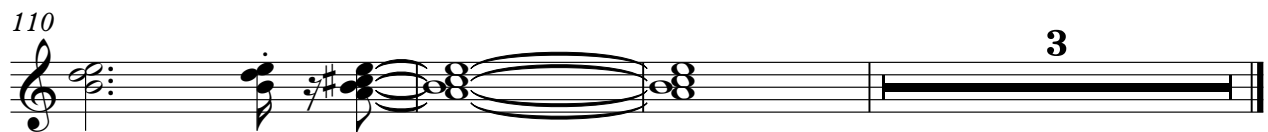
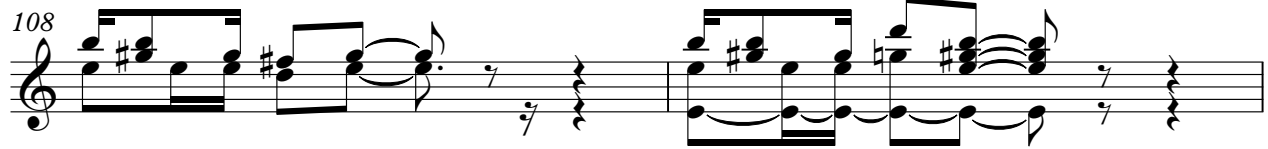
Measure 95: A melodic line with slurs and ties.

Measure 99: A melodic line with slurs and ties.

Measure 102: A melodic line with slurs and ties, followed by a measure rest for 2 measures.

Electric Guitar

3



♩ = 127,968880

6

9

11

13

15

18

21

25

29

(P)1993 International Music Publications Ltd (C)1993 Barnes Music Engraving Ltd
(P)1993 International Music Publications Ltd (C)1993 Barnes Music Engraving Ltd

32

36

40

44

47

50

54

58

61

65

69

73

75

77

79

81

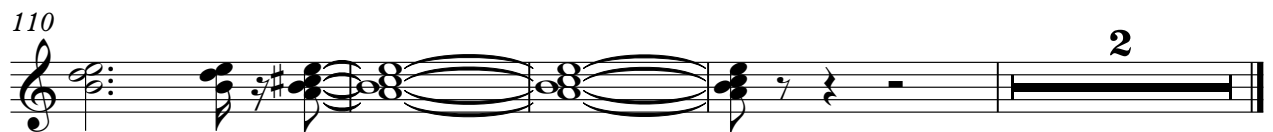
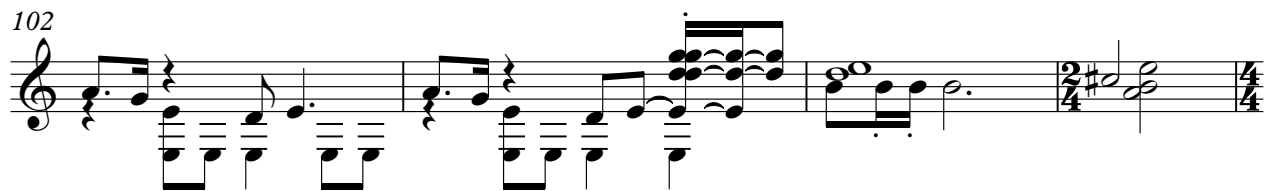
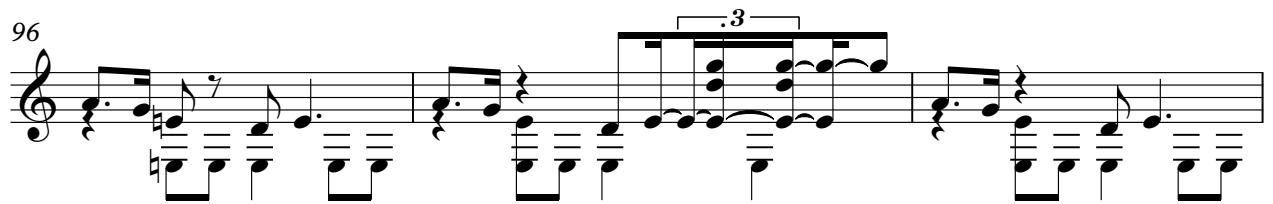
83

85

87

89

V.S.



♩ = 127,968880

10

14

18

22

26

30

33

37

40

3

(P)1993 International Music Publications Ltd(C)1993 Barnes Music Engraving Ltd
(P)1993 International Music Publications Ltd(C)1993 Barnes Music Engraving Ltd

45



49



53



57



61



65



69



79



83



87



Lead 1 (Square)

KravitzLenni - areugo

♩ = 127,968880

19

23

28

33

39

51

56

60

65

70

2

8

2

33

2

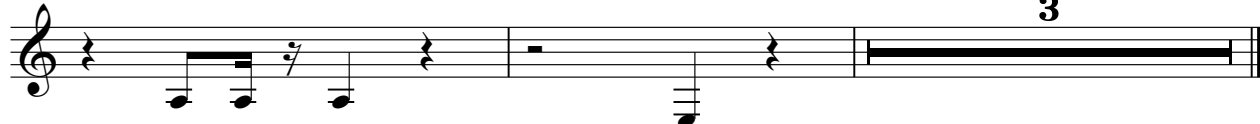
2

Lead 1 (Square)

108



111



3