

Lapointe - La Maman Des Poissons

♩ = 180,000183

This system contains the first five measures of the piece. The instruments and their parts are: Flute (melodic line with some rests), Cabasa (rhythmic accompaniment), Alto Glockenspiel (mostly rests), Marimba (melodic line in both treble and bass clefs), Harp (mostly rests), Kora (rhythmic accompaniment with chords), Acoustic Bass (melodic line in bass clef), and FX 4 (Atmosphere) (mostly rests). The tempo is marked as ♩ = 180,000183.

Flute

Cabasa

Alto Glockenspiel

Marimba

Harp

Kora

Acoustic Bass

FX 4 (Atmosphere)

♩ = 180,000183



6

This system contains measures 6 through 10. The instruments and their parts are: Fl. (melodic line with a triplet), Cab. (rhythmic accompaniment), Mar. (melodic line with a triplet), Kora (rhythmic accompaniment with chords), A. Bass (melodic line in bass clef), and FX 4 (melodic line). The tempo is marked as ♩ = 180,000183.

Fl.

Cab.

Mar.

Kora

A. Bass

FX 4

11

Cab.

Kora

A. Bass

FX 4



16

Cab.

Kora

A. Bass

FX 4



21

Fl.

Cab.

Kora

A. Bass

FX 4

26

Fl.

Cab.

Mar.

Kora

A. Bass

FX 4



30

Cab.

Mar.

Kora

A. Bass

FX 4

34

Cab.

Alto Glock.

Mar.

Hp.

Kora

A. Bass

FX 4



39

Fl.

Cab.

Alto Glock.

Hp.

Kora

A. Bass

FX 4

44

Fl.

Cab.

Mar.

Kora

A. Bass

FX 4

Detailed description: This system of musical notation covers measures 44 through 48. It features six staves: Flute (Fl.), Cabasa (Cab.), Maracas (Mar.), Kora, Acoustic Bass (A. Bass), and FX 4. The key signature is two sharps (F# and C#). The Flute part begins with a melodic phrase in measure 44. The Cabasa part provides a rhythmic accompaniment with a repeating eighth-note pattern. The Maracas part has a similar rhythmic pattern. The Kora part consists of a complex, multi-layered texture of chords and arpeggios. The Acoustic Bass part provides a steady bass line. The FX 4 part has a simple, rhythmic accompaniment.



49

Cab.

Mar.

Kora

A. Bass

FX 4

Detailed description: This system of musical notation covers measures 49 through 53. It features five staves: Cabasa (Cab.), Maracas (Mar.), Kora, Acoustic Bass (A. Bass), and FX 4. The key signature remains two sharps. The Cabasa part continues with its rhythmic pattern. The Maracas part has a more complex rhythmic pattern with some syncopation. The Kora part continues with its complex texture. The Acoustic Bass part continues with its bass line. The FX 4 part continues with its rhythmic accompaniment.

53

Cab.

Alto Glock.

Mar.

Hp.

Kora

A. Bass

FX 4



57

Cab.

Alto Glock.

Hp.

Kora

A. Bass

FX 4

62

Fl.

Cab.

Alto Glock.

Hp.

Kora

A. Bass

FX 4



67

Cab.

Mar.

Kora

A. Bass

FX 4

71

Cab.

Mar.

Kora

A. Bass

FX 4



75

Cab.

Alto Glock.

Hp.

Kora

A. Bass

FX 4

80

Fl.

Cab.

Alto Glock.

Hp.

Kora

A. Bass

FX 4

Detailed description: This system of musical notation covers measures 80 to 83. The Flute (Fl.) part has rests in measures 80-82 and enters in measure 83 with a melodic phrase. The Cabasa (Cab.) part plays a steady eighth-note pattern with accents. The Alto Glockenspiel (Alto Glock.) part has a sparse accompaniment of quarter notes. The Harp (Hp.) part features arpeggiated chords. The Kora part consists of dense, rhythmic chordal patterns. The Acoustic Bass (A. Bass) part provides a bass line with quarter and eighth notes. The FX 4 part has a rhythmic accompaniment of eighth notes.



84

Fl.

Cab.

Mar.

Kora

A. Bass

FX 4

Detailed description: This system of musical notation covers measures 84 to 87. The Flute (Fl.) part enters in measure 84 with a melodic phrase and has rests in measures 85-87. The Cabasa (Cab.) part continues its eighth-note pattern. The Maracas (Mar.) part enters in measure 84 with a rhythmic pattern of eighth notes. The Kora part continues with dense chordal patterns. The Acoustic Bass (A. Bass) part continues with a bass line. The FX 4 part continues with a rhythmic accompaniment of eighth notes.

89

Cab. 

Mar. 

Kora 

A. Bass 

FX 4 



93

Cab. 

Alto Glock. 

Mar. 

Hp. 

Kora 

A. Bass 

FX 4 

97

Cab.

Alto Glock.

Hp.

Kora

A. Bass

FX 4



102

Cab.

Alto Glock.

Hp.

Kora

A. Bass

FX 4

107

Cab. Kora A. Bass FX 4

This system contains measures 107 through 111. It features four staves: Cab. (Cajon), Kora (Kora), A. Bass (Acoustic Bass), and FX 4 (FX 4). The Cab. part consists of a rhythmic pattern of eighth notes with accents. The Kora part features a complex, multi-layered texture of chords and arpeggios. The A. Bass part provides a steady bass line with eighth notes. The FX 4 part has a melodic line with eighth notes and rests.



112

Cab. Kora A. Bass FX 4

This system contains measures 112 through 116. It features four staves: Cab. (Cajon), Kora (Kora), A. Bass (Acoustic Bass), and FX 4 (FX 4). The Cab. part continues with the same rhythmic pattern. The Kora part maintains its complex texture. The A. Bass part continues with its bass line. The FX 4 part continues with its melodic line.



117

Fl. Cab. Kora A. Bass FX 4

This system contains measures 117 through 121. It features five staves: Fl. (Flute), Cab. (Cajon), Kora (Kora), A. Bass (Acoustic Bass), and FX 4 (FX 4). The Fl. part has a melodic line with a trill-like figure in measure 117. The Cab. part continues with its rhythmic pattern. The Kora part continues with its complex texture. The A. Bass part continues with its bass line. The FX 4 part continues with its melodic line.

120

Fl.

Cab.

Kora

A. Bass

FX 4

The image shows a musical score for five instruments: Flute (Fl.), Cabala (Cab.), Kora, Acoustic Bass (A. Bass), and FX 4. The score is in G major (one sharp) and 4/4 time. The Flute part starts at measure 120 with a grace note and a triplet of eighth notes. The Cabala part has a rhythmic pattern of eighth notes with accents. The Kora part features a complex rhythmic pattern with many beamed notes. The Acoustic Bass part has a melodic line with a grace note. The FX 4 part has a simple melodic line with a grace note.

Flute

Lapointe - La Maman Des Poissons

♩ = 180,000183

2

7 16

27 16

47 16

67 16

87 32

120

♩ = 180,000183

2

7

12

17

22

27

32

37

42

47

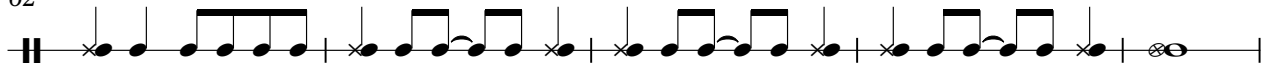
52



57



62



67



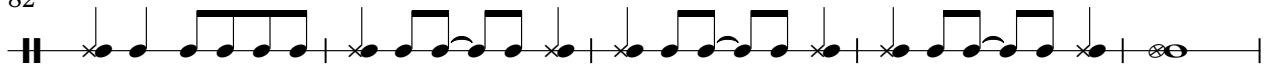
72



77



82



87



92



97



♩ = 180,000183

34

39

56

63

12

80

12

97

101

20

Lapointe - La Maman Des Poissons

Marimba

$\text{♩} = 180,000183$

2

7

20

30

34

12

49

52

12

12

67

Musical staff for Marimba, measures 67-70. The staff is in treble clef with a key signature of one sharp (F#). It contains a sequence of eighth and sixteenth notes with rests, typical of a marimba part.

71

Musical staff for Marimba, measures 71-74. The staff is in treble clef with a key signature of one sharp (F#). It contains a sequence of eighth and sixteenth notes with rests, typical of a marimba part.

75

Musical staff for Marimba, measures 75-78. The staff is in treble clef with a key signature of one sharp (F#). Measure 75 contains a whole rest with the number '12' above it. Measures 76-78 contain a sequence of eighth and sixteenth notes with rests.

90

Musical staff for Marimba, measures 90-92. The staff is in treble clef with a key signature of one sharp (F#). It contains a sequence of eighth and sixteenth notes with rests, typical of a marimba part.

93

Musical staff for Marimba, measures 93-95. The staff is in treble clef with a key signature of one sharp (F#). Measures 93-94 contain a sequence of eighth and sixteenth notes with rests. Measure 95 contains a whole rest with the number '28' above it.

Lapointe - La Maman Des Poissons

Harp

♩ = 180,000183

34

34

39

12

12

55

60

12

12

76

80

12

12

2

Harp

95

Musical score for harp, measures 95-99. The score is in G major (one sharp) and 2/4 time. It consists of five measures. The right hand plays chords and arpeggios, while the left hand plays a simple bass line. Above the right-hand staff, there are five harp diagrams showing the fingerings for the chords in each measure.

100

Musical score for harp, measures 100-103. The score is in G major (one sharp) and 2/4 time. It consists of four measures. The first three measures contain musical notation for both hands. The fourth measure contains two thick horizontal bars, one above and one below the staff, with the number '20' written above and below the bars respectively.

$\text{♩} = 180,000183$

2

7

11

15

19

23

28

32

36

40

Musical score for Kora, measures 45-85. The score is written in treble clef with a key signature of two sharps (F# and C#). The music consists of a series of chords and melodic lines, primarily using eighth and sixteenth notes. The score is divided into systems, with measure numbers 45, 50, 54, 58, 63, 68, 72, 76, 80, and 85 marking the beginning of each system. The notation includes various rhythmic values and articulation marks, such as slurs and accents.

90

94

98

103

107

111

115

119

Lapointe - La Maman Des Poissons

Acoustic Bass

♩ = 180,000183



V.S.

62



68



74



80



86



92



98



104



110



116



♩ = 180,000183

6

11

16

21

27

33

38

43

49

55

V.S.

FX 4 (Atmosphere)

115



119

