

The Love (Remix)

0.0"
1.1,00
Where's The Love [Remix] by Hanson (Sequenced by A. J. Donlon - ajdonlon@hotr

♩ = 126,000130

Whistle



Musical notation for Whistle part 1, featuring a treble clef, key signature of one sharp (F#), and 4/4 time signature. The melody consists of eighth notes with various accidentals (flats and naturals).

Light Bass



Musical notation for Light Bass part 1, featuring a bass clef, key signature of one sharp (F#), and 4/4 time signature. The part consists of a steady eighth-note bass line.

♩ = 126,000130

Synth



Musical notation for Synth part 1, featuring a treble clef, key signature of one sharp (F#), and 4/4 time signature. The part consists of chords with eighth-note patterns.



Whistle

3



Musical notation for Whistle part 2, starting at measure 3. It features a treble clef, key signature of one sharp (F#), and 4/4 time signature. The melody continues with eighth notes and accidentals.

Light Bass



Musical notation for Light Bass part 2, starting at measure 3. It features a bass clef, key signature of one sharp (F#), and 4/4 time signature. The part continues with a steady eighth-note bass line.

Synth



Musical notation for Synth part 2, starting at measure 3. It features a treble clef, key signature of one sharp (F#), and 4/4 time signature. The part continues with chords and eighth-note patterns.



Whistle

5



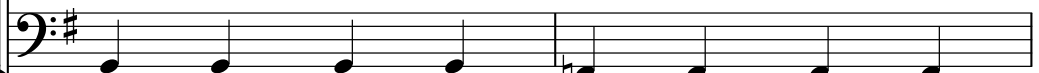
Musical notation for Whistle part 3, starting at measure 5. It features a treble clef, key signature of one sharp (F#), and 4/4 time signature. The melody continues with eighth notes and accidentals.

Light Bass



Musical notation for Light Bass part 3, starting at measure 5. It features a bass clef, key signature of one sharp (F#), and 4/4 time signature. The part continues with a steady eighth-note bass line.

Heavy Bass



Musical notation for Heavy Bass part 3, starting at measure 5. It features a bass clef, key signature of one sharp (F#), and 4/4 time signature. The part consists of a simple, slow-moving bass line.

Synth



Musical notation for Synth part 3, starting at measure 5. It features a treble clef, key signature of one sharp (F#), and 4/4 time signature. The part continues with chords and eighth-note patterns.

Copyright © 1998 by A. J. Donlon

7

Whistle

Light Bass

Heavy Bass

Strings

Synth



8

Whistle

Drums

Light Bass

Heavy Bass

Strings

Synth

9

Whistle

Drums

Light Bass

Heavy Bass

Strings

Synth



11

Whistle

Drums

Light Bass

Heavy Bass

Synth

13

Whistle

Drums

Light Bass

Heavy Bass

Synth



15

Whistle

Drums

Light Bass

Heavy Bass

Synth

17

Drums

Light Bass

Heavy Bass

Reverse Cymbal

Synth



19

Drums

Light Bass

Heavy Bass

Synth

21

Drums

Light Bass

Heavy Bass

Synth



23

Drums

Light Bass

Heavy Bass

Synth

25

Drums

Light Bass

Heavy Bass

Reverse Cymbal

Synth

Detailed description of the musical score for measures 25-26: The score is for a 4/4 piece in G major. Measure 25: Drums play a snare on the 2nd and 4th beats and a hi-hat on the 1st and 3rd beats. Light Bass plays a continuous eighth-note pattern. Heavy Bass plays quarter notes: G2, A2, B2, C3. Reverse Cymbal has a single note on the 2nd beat. Synth plays a rhythmic accompaniment of chords: G2-B2, A2-C3, B2-D3, C3-E3.



27

Drums

Light Bass

Heavy Bass

Synth

Detailed description of the musical score for measures 27-28: Measure 27: Drums play a snare on the 2nd and 4th beats and a hi-hat on the 1st and 3rd beats. Light Bass plays a continuous eighth-note pattern. Heavy Bass plays quarter notes: G2, A2, B2, C3. Synth plays a rhythmic accompaniment of chords: G2-B2, A2-C3, B2-D3, C3-E3. Measure 28: Drums play a snare on the 2nd and 4th beats and a hi-hat on the 1st and 3rd beats. Light Bass plays a continuous eighth-note pattern. Heavy Bass plays quarter notes: G2, A2, B2, C3. Synth plays a rhythmic accompaniment of chords: G2-B2, A2-C3, B2-D3, C3-E3.

29

Drums

Light Bass

Heavy Bass

Synth



31

Drums

Light Bass

Heavy Bass

Synth

32

Drums

Light Bass

Heavy Bass

Strings

Synth



33

Drums

Light Bass

Heavy Bass

Strings

Synth

34

Whistle

Drums

Light Bass

Heavy Bass

Strings

Synth



36

Whistle

Drums

Light Bass

Heavy Bass

Synth

38

Whistle

Drums

Light Bass

Heavy Bass

Synth



40

Whistle

Drums

Light Bass

Heavy Bass

Synth

42

Drums

Solo Synth

Light Bass

Heavy Bass

Synth



43

Drums

Solo Synth

Light Bass

Heavy Bass

Synth

44

Drums

Solo Synth

Light Bass

Heavy Bass

Synth



45

Drums

Solo Synth

Light Bass

Heavy Bass

Synth

46

Drums

Solo Synth

Light Bass

Heavy Bass

Synth

Detailed description: This block contains the musical notation for measures 46 and 47. It features five staves: Drums, Solo Synth, Light Bass, Heavy Bass, and Synth. The Drums staff shows a consistent pattern of eighth notes with 'x' marks above them, indicating a specific drum sound. The Solo Synth staff has a melodic line with eighth notes and some beamed sixteenth notes. The Light Bass staff plays a steady eighth-note bass line. The Heavy Bass staff has a sparse line of quarter notes. The Synth staff consists of block chords with eighth-note rhythms.



47

Drums

Solo Synth

Light Bass

Heavy Bass

Synth

Detailed description: This block contains the musical notation for measures 47 and 48. It features five staves: Drums, Solo Synth, Light Bass, Heavy Bass, and Synth. The Drums staff continues the eighth-note pattern from measure 46. The Solo Synth staff continues its melodic line. The Light Bass staff continues its eighth-note bass line. The Heavy Bass staff continues its quarter-note line. The Synth staff continues its block chord pattern.

48

Drums

Solo Synth

Light Bass

Heavy Bass

Synth



49

Drums

Solo Synth

Light Bass

Heavy Bass

Synth

50

Drums

Light Bass

Heavy Bass

Synth



52

Drums

Light Bass

Heavy Bass

Synth

54

Drums

Light Bass

Heavy Bass

Synth

Detailed description: This system contains measures 54 through 57. The Drums part features a consistent snare and kick drum pattern. The Light Bass part plays a fast, rhythmic eighth-note line. The Heavy Bass part plays a steady quarter-note line. The Synth part provides harmonic support with chords and eighth-note accompaniment.



56

Drums

Light Bass

Heavy Bass

Reverse Cymbal

Synth

Detailed description: This system contains measures 58 through 61. The Drums part continues with the snare and kick pattern. The Light Bass part maintains its eighth-note line. The Heavy Bass part continues with its quarter-note line. The Reverse Cymbal part has a sustained cymbal sound that changes in intensity. The Synth part continues with its chordal accompaniment.

58

Drums

Light Bass

Heavy Bass

Synth



60

Drums

Light Bass

Heavy Bass

Synth

62

Drums

Light Bass

Heavy Bass

Synth



64

Drums

Light Bass

Heavy Bass

Strings

Synth

65

Drums

Light Bass

Heavy Bass

Strings

Synth



66

Whistle

Drums

Light Bass

Heavy Bass

Strings

Synth

68

Whistle

Drums

Light Bass

Heavy Bass

Synth



70

Whistle

Drums

Light Bass

Heavy Bass

Synth

72

Whistle

Drums

Light Bass

Heavy Bass

Synth



74

Drums

Solo Synth

Light Bass

Heavy Bass

Synth

75

Drums

Solo Synth

Light Bass

Heavy Bass

Synth



76

Drums

Solo Synth

Light Bass

Heavy Bass

Synth

77

Drums

Solo Synth

Light Bass

Heavy Bass

Synth



78

Drums

Solo Synth

Light Bass

Heavy Bass

Synth

79

Drums

Solo Synth

Light Bass

Heavy Bass

Synth



80

Drums

Solo Synth

Light Bass

Heavy Bass

Synth

81

Drums

Solo Synth

Light Bass

Heavy Bass

Reverse Cymbal

Synth



82

Drums

Keyboards

Light Bass

Heavy Bass

83

Drums

Keyboards

Light Bass

Heavy Bass

Detailed description: This block contains the musical notation for measures 83 through 86. It features four staves: Drums, Keyboards, Light Bass, and Heavy Bass. The Drums staff uses a drum set icon and shows a pattern of hits with 'x' marks. The Keyboards staff is in treble clef with a key signature of one sharp (F#) and contains chords and melodic lines. The Light Bass staff is in bass clef with a key signature of one sharp (F#) and contains a rhythmic line of eighth notes. The Heavy Bass staff is in bass clef with a key signature of one sharp (F#) and contains a simple line of quarter notes.



84

Drums

Keyboards

Light Bass

Heavy Bass

Detailed description: This block contains the musical notation for measures 87 through 90. It features four staves: Drums, Keyboards, Light Bass, and Heavy Bass. The Drums staff uses a drum set icon and shows a pattern of hits with 'x' marks. The Keyboards staff is in treble clef with a key signature of one sharp (F#) and contains chords and melodic lines. The Light Bass staff is in bass clef with a key signature of one sharp (F#) and contains a rhythmic line of eighth notes. The Heavy Bass staff is in bass clef with a key signature of one sharp (F#) and contains a simple line of quarter notes.

85

Drums

Keyboards

Light Bass

Heavy Bass

Detailed description: This musical score block covers measures 85 to 88. It features four staves: Drums, Keyboards, Light Bass, and Heavy Bass. The Drums staff uses a drum set icon and shows a consistent pattern of snare and bass drum hits. The Keyboards staff is in treble clef with a key signature of one sharp (F#) and contains chords and melodic lines. The Light Bass staff is in bass clef with a key signature of one sharp (F#) and plays a steady eighth-note bass line. The Heavy Bass staff is in bass clef with a key signature of one sharp (F#) and plays a simple quarter-note bass line.



86

Drums

Keyboards

Light Bass

Heavy Bass

Detailed description: This musical score block covers measures 89 to 92. It features four staves: Drums, Keyboards, Light Bass, and Heavy Bass. The Drums staff uses a drum set icon and shows a consistent pattern of snare and bass drum hits. The Keyboards staff is in treble clef with a key signature of one sharp (F#) and contains chords and melodic lines. The Light Bass staff is in bass clef with a key signature of one sharp (F#) and plays a steady eighth-note bass line. The Heavy Bass staff is in bass clef with a key signature of one sharp (F#) and plays a simple quarter-note bass line.

87

Drums

Keyboards

Light Bass

Heavy Bass



88

Drums

Keyboards

Light Bass

Heavy Bass

89

Drums

Keyboards

Light Bass

Heavy Bass



90

Drums

Light Bass

Synth



91

Drums

Light Bass

Synth

92

Drums

Light Bass

Synth

This system contains measures 92 and 93. The Drums part features a consistent snare and hi-hat pattern. The Light Bass part consists of a steady eighth-note bass line. The Synth part provides a harmonic accompaniment with chords and single notes.



93

Drums

Light Bass

Synth

This system contains measures 93 and 94. The Drums part features a consistent snare and hi-hat pattern. The Light Bass part consists of a steady eighth-note bass line. The Synth part provides a harmonic accompaniment with chords and single notes.



94

Drums

Light Bass

Synth

This system contains measures 94 and 95. The Drums part features a consistent snare and hi-hat pattern. The Light Bass part consists of a steady eighth-note bass line. The Synth part provides a harmonic accompaniment with chords and single notes.

95

Drums

Light Bass

Synth



96

Drums

Light Bass

Synth



97

Drums

Light Bass

Synth

98

Drums

Light Bass

Heavy Bass

Synth



100

Drums

Light Bass

Heavy Bass

Synth

102

Drums

Light Bass

Heavy Bass

Synth

Detailed description: This musical score block covers measures 102 and 103. It features four staves: Drums, Light Bass, Heavy Bass, and Synth. The Drums staff shows a consistent pattern of eighth notes with 'x' marks above them, indicating cymbal hits. The Light Bass staff has a steady eighth-note line. The Heavy Bass staff plays a simple eighth-note bass line. The Synth staff features a sequence of chords, each marked with a '7' and a slash, indicating a seventh chord with a slash (likely a dominant seventh chord).



104

Drums

Light Bass

Heavy Bass

Strings

Synth

Detailed description: This musical score block covers measures 104 through 107. It features five staves: Drums, Light Bass, Heavy Bass, Strings, and Synth. The Drums staff continues with eighth notes and cymbal hits. The Light Bass staff has eighth notes. The Heavy Bass staff has eighth notes. The Strings staff shows a sequence of sixteenth-note patterns, with the number '6' written above each measure, indicating a sixteenth-note figure. The Synth staff features a sequence of chords, each marked with a '7' and a slash, similar to the previous block.

105

Drums

Light Bass

Heavy Bass

Strings

Synth



106

Whistle

Drums

Light Bass

Heavy Bass

Strings

Synth

108

Whistle

Drums

Light Bass

Heavy Bass

Synth



110

Whistle

Drums

Light Bass

Heavy Bass

Synth

112

Whistle

Drums

Light Bass

Heavy Bass

Synth



113

Whistle

Drums

Light Bass

Heavy Bass

Synth

114

Drums

Solo Synth

Light Bass

Heavy Bass

Synth

Detailed description: This block contains the musical notation for measures 114 and 115. It features five staves: Drums, Solo Synth, Light Bass, Heavy Bass, and Synth. The key signature is three sharps (F#, C#, G#). The Drums staff shows a consistent pattern of eighth notes with 'x' marks above them, indicating cymbal hits. The Solo Synth staff has a melodic line with eighth notes and some beamed sixteenth notes. The Light Bass staff plays a steady eighth-note bass line. The Heavy Bass staff has a sparse line of quarter notes. The Synth staff consists of block chords with eighth-note rhythms.



115

Drums

Solo Synth

Light Bass

Heavy Bass

Synth

Detailed description: This block contains the musical notation for measures 115 and 116. It features five staves: Drums, Solo Synth, Light Bass, Heavy Bass, and Synth. The key signature is three sharps (F#, C#, G#). The Drums staff continues the eighth-note pattern with 'x' marks. The Solo Synth staff continues its melodic line. The Light Bass staff continues its eighth-note bass line. The Heavy Bass staff continues its quarter-note line. The Synth staff continues its block chord pattern.

116

Drums

Solo Synth

Light Bass

Heavy Bass

Synth

Detailed description: This block contains the musical notation for measures 116 and 117. It features five staves: Drums, Solo Synth, Light Bass, Heavy Bass, and Synth. The key signature is three sharps (F#, C#, G#). The drum part has a consistent pattern of eighth notes with 'x' marks above them. The Solo Synth part has a melodic line with eighth notes and some beamed sixteenth notes. The Light Bass part has a steady eighth-note bass line. The Heavy Bass part has a sparse line of quarter notes. The Synth part has a chordal accompaniment with eighth notes.



117

Drums

Solo Synth

Light Bass

Heavy Bass

Synth

Detailed description: This block contains the musical notation for measures 117 and 118. It features five staves: Drums, Solo Synth, Light Bass, Heavy Bass, and Synth. The key signature is three sharps (F#, C#, G#). The drum part continues with eighth notes and 'x' marks. The Solo Synth part continues its melodic line. The Light Bass part continues its eighth-note bass line. The Heavy Bass part continues its quarter-note line. The Synth part continues its chordal accompaniment.

118

Drums

Solo Synth

Light Bass

Heavy Bass

Synth



119

Drums

Solo Synth

Light Bass

Heavy Bass

Synth

120

Drums

Solo Synth

Light Bass

Heavy Bass

Synth

Detailed description: This system contains measures 120 through 123. The tempo is marked as 120. The Drums part features a consistent pattern of eighth notes with 'x' marks above them, indicating cymbal hits. The Solo Synth part plays a melodic line with eighth notes and some beamed sixteenth notes. The Light Bass part has a steady eighth-note bass line. The Heavy Bass part plays a simple quarter-note bass line. The Synth part consists of block chords with eighth-note rhythms.



121

Drums

Solo Synth

Light Bass

Heavy Bass

Synth

Detailed description: This system contains measures 124 through 127. The Drums part continues with the eighth-note pattern. The Solo Synth part continues its melodic line. The Light Bass part continues with eighth notes. The Heavy Bass part continues with quarter notes. The Synth part continues with block chords. The system ends with a double bar line.

e's The Love (Remix)

Whistle

♩ = 126,000130

The image displays a musical score for a whistle piece. It consists of eight staves of music, each starting with a measure number (1, 3, 5, 7, 9, 11, 13, 15). The music is written in treble clef with a key signature of one sharp (F#) and a 4/4 time signature. The tempo is indicated as ♩ = 126,000130. The melody is a continuous sequence of eighth notes, with some notes marked with a flat (b). The eighth staff concludes with a double bar line and the number 17, indicating the end of the piece.

Copyright © 1998 by A. J. Donlon



Whistle

110



Musical notation for measure 110, featuring a treble clef, a key signature of two sharps (F# and C#), and a series of eighth and sixteenth notes with stems. The notation includes a repeat sign at the end of the measure.

112



Musical notation for measure 112, featuring a treble clef, a key signature of two sharps (F# and C#), and a series of eighth and sixteenth notes with stems. The notation includes a repeat sign at the end of the measure, with a large number '9' positioned above the final bar line.

e's The Love (Remix)

Drums

♩ = 126,000130

7

7

10

10

14

14

18

18

22

22

26

26

30

30

33

33

36

36

40

40

Copyright © 1998 by A. J. Donlon

V.S.

44

44

48

48

52

52

56

56

59

59

63

63

66

66

70

70

74

74

78

78

Drums

81

Measure 81: Drum notation on a single staff. The top line contains a series of 'x' marks representing cymbal hits, grouped in pairs. The bottom line contains a bass drum pattern with quarter notes and eighth notes.

84

Measure 84: Drum notation on a single staff. Similar to measure 81, with cymbal hits on the top line and a bass drum pattern on the bottom line.

87

Measure 87: Drum notation on a single staff. Similar to measure 81, with cymbal hits on the top line and a bass drum pattern on the bottom line.

90

Measure 90: Drum notation on a single staff. The top line has cymbal hits. The bottom line has a bass drum pattern, including a triplet of eighth notes.

94

Measure 94: Drum notation on a single staff. Similar to measure 81, with cymbal hits on the top line and a bass drum pattern on the bottom line.

98

Measure 98: Drum notation on a single staff. Similar to measure 81, with cymbal hits on the top line and a bass drum pattern on the bottom line.

102

Measure 102: Drum notation on a single staff. Similar to measure 81, with cymbal hits on the top line and a bass drum pattern on the bottom line.

106

Measure 106: Drum notation on a single staff. Similar to measure 81, with cymbal hits on the top line and a bass drum pattern on the bottom line.

110

Measure 110: Drum notation on a single staff. Similar to measure 81, with cymbal hits on the top line and a bass drum pattern on the bottom line.

114

Measure 114: Drum notation on a single staff. Similar to measure 81, with cymbal hits on the top line and a bass drum pattern on the bottom line.

V.S.

4

Drums

118

Musical notation for drums, measures 118-121. The notation consists of two staves. The top staff uses a five-line system with 'x' marks and downward-pointing stems to represent drum hits. The bottom staff uses a five-line system with solid black notes and stems to represent a bass line. The music is divided into four measures by vertical bar lines. The first measure contains four groups of notes, each with an 'x' above it. The second measure contains four groups of notes, each with an 'x' above it. The third measure contains four groups of notes, each with an 'x' above it. The fourth measure contains four groups of notes, each with an 'x' above it, followed by a double bar line.

120

Musical notation for drums, measures 120-123. The notation consists of two staves. The top staff uses a five-line system with 'x' marks and downward-pointing stems to represent drum hits. The bottom staff uses a five-line system with solid black notes and stems to represent a bass line. The music is divided into four measures by vertical bar lines. The first measure contains four groups of notes, each with an 'x' above it. The second measure contains four groups of notes, each with an 'x' above it. The third measure contains four groups of notes, each with an 'x' above it. The fourth measure contains four groups of notes, each with an 'x' above it, followed by a double bar line.

e's The Love (Remix)
Solo Synth

♩ = 126,000130

41

43

45

47

49 **24**

74

76

78

80

82 **8** **24**

The image shows a musical score for a solo synth piece. It consists of ten staves of music in 4/4 time, with a key signature of one sharp (F#). The tempo is marked as ♩ = 126,000130. The score is divided into measures, with measure numbers 41, 43, 45, 47, 49, 74, 76, 78, 80, and 82 indicated. There are several rests: a full-measure rest at measure 41, a 24-measure rest starting at measure 49, an 8-measure rest starting at measure 82, and another 24-measure rest starting at measure 86. The music features a rhythmic pattern of eighth and sixteenth notes, often beamed together, with some notes marked with accents.

Copyright © 1998 by A. J. Donlon



e's The Love (Remix)
Keyboards

♩ = 126,000130

81

83

85

87

89

33

Copyright © 1998 by A. J. Donlon

e's The Love (Remix)
Light Bass

♩ = 126,000130



21



23



25



27



29



31



33



35



37



39



41

Measure 41: Bass clef, key signature of one sharp (F#). The first half of the measure contains a sequence of eighth notes: F#2, G2, A2, B2, C3, D3, E3, F#3. The second half contains a sequence of eighth notes: G#3, A3, B3, C4, D4, E4, F#4, G4.

43

Measure 43: Bass clef, key signature of one sharp (F#). The first half of the measure contains a sequence of eighth notes: F#2, G2, A2, B2, C3, D3, E3, F#3. The second half contains a sequence of eighth notes: G#3, A3, B3, C4, D4, E4, F#4, G4.

45

Measure 45: Bass clef, key signature of one sharp (F#). The first half of the measure contains a sequence of eighth notes: F#2, G2, A2, B2, C3, D3, E3, F#3. The second half contains a sequence of eighth notes: G#3, A3, B3, C4, D4, E4, F#4, G4.

47

Measure 47: Bass clef, key signature of one sharp (F#). The first half of the measure contains a sequence of eighth notes: F#2, G2, A2, B2, C3, D3, E3, F#3. The second half contains a sequence of eighth notes: G#3, A3, B3, C4, D4, E4, F#4, G4.

49

Measure 49: Bass clef, key signature of one sharp (F#). The first half of the measure contains a sequence of eighth notes: F#2, G2, A2, B2, C3, D3, E3, F#3. The second half contains a sequence of eighth notes: G#3, A3, B3, C4, D4, E4, F#4, G4.

51

Measure 51: Bass clef, key signature of one sharp (F#). The first half of the measure contains a sequence of eighth notes: F#2, G2, A2, B2, C3, D3, E3, F#3. The second half contains a sequence of eighth notes: G#3, A3, B3, C4, D4, E4, F#4, G4.

53

Measure 53: Bass clef, key signature of one sharp (F#). The first half of the measure contains a sequence of eighth notes: F#2, G2, A2, B2, C3, D3, E3, F#3. The second half contains a sequence of eighth notes: G#3, A3, B3, C4, D4, E4, F#4, G4.

55

Measure 55: Bass clef, key signature of one sharp (F#). The first half of the measure contains a sequence of eighth notes: F#2, G2, A2, B2, C3, D3, E3, F#3. The second half contains a sequence of eighth notes: G#3, A3, B3, C4, D4, E4, F#4, G4.

57

Measure 57: Bass clef, key signature of one sharp (F#). The first half of the measure contains a sequence of eighth notes: F#2, G2, A2, B2, C3, D3, E3, F#3. The second half contains a sequence of eighth notes: G#3, A3, B3, C4, D4, E4, F#4, G4.

59

Measure 59: Bass clef, key signature of one sharp (F#). The first half of the measure contains a sequence of eighth notes: F#2, G2, A2, B2, C3, D3, E3, F#3. The second half contains a sequence of eighth notes: G#3, A3, B3, C4, D4, E4, F#4, G4.

V.S.

61



63



65



67



69



71



73



75



77



79



81



83



85



87



89



91



93



95



97



99



V.S.

101



103



105



107



109



111



113



115



117



119



Light Bass

121



e's The Love (Remix)
Heavy Bass

♩ = 126,000130

4

9

15

21

27

33

39

45

51

57

ie's The Love (Remix)
Reverse Cymbal

♩ = 126,000130

16 7

26

31 23

81

8 33

Copyright © 1998 by A. J. Donlon

e's The Love (Remix)
Strings

♩ = 126,000130

6

7 6 6 6 6

8 6 6

9 22

32 6 6 6 6

33 6 6

34 6 29

64 6 6 6 6

65 6 6

66 6 23

Copyright © 1998 by A. J. Donlon

2

Strings

90

14



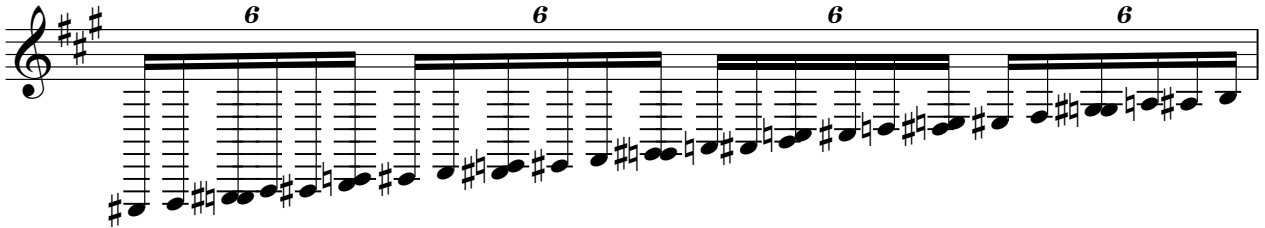
104

6

6

6

6



105

6

6

6

6



106

16



e's The Love (Remix)

Synth

♩ = 126,000130

4

7

10

13

16

19

22

25

28

61



64



67



70



73



76



79



81



8

90

92

94

96

98

101

104

107

110

113

116



119



121

